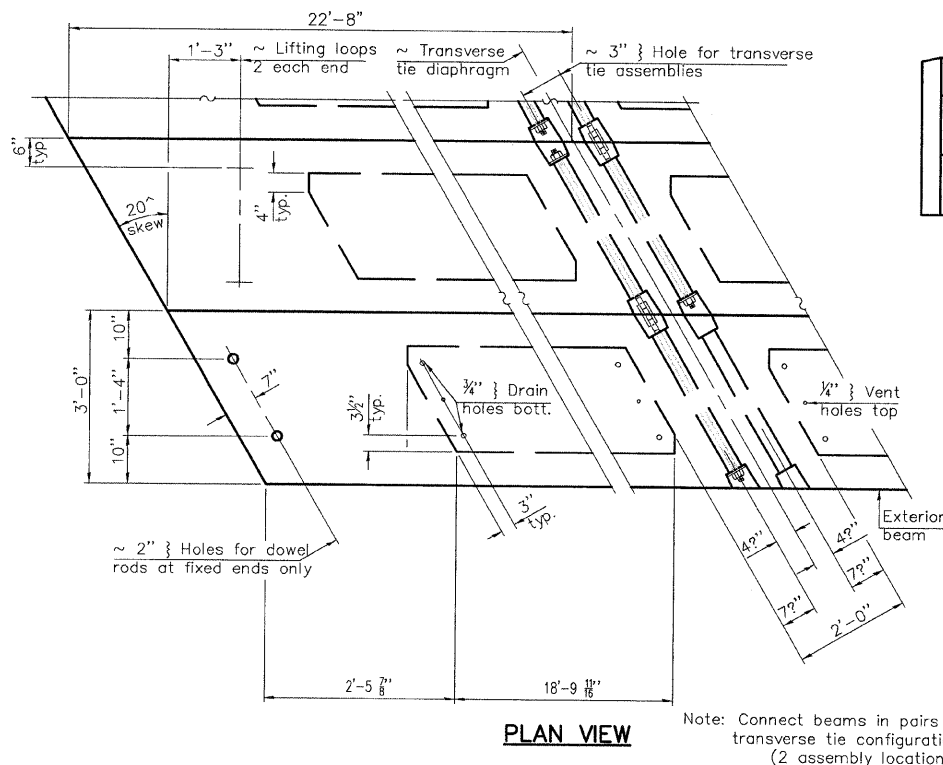
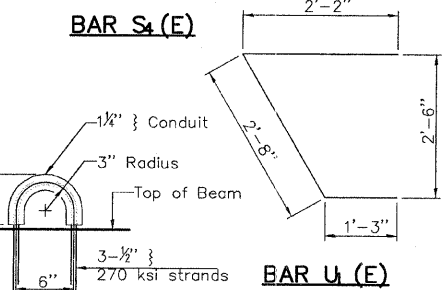
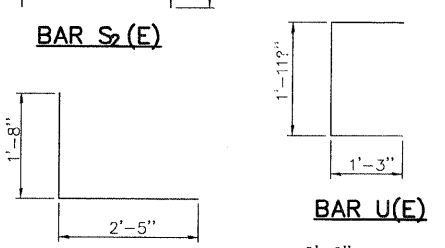
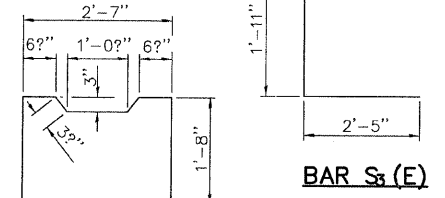
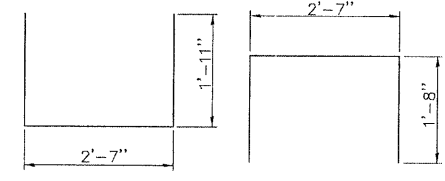
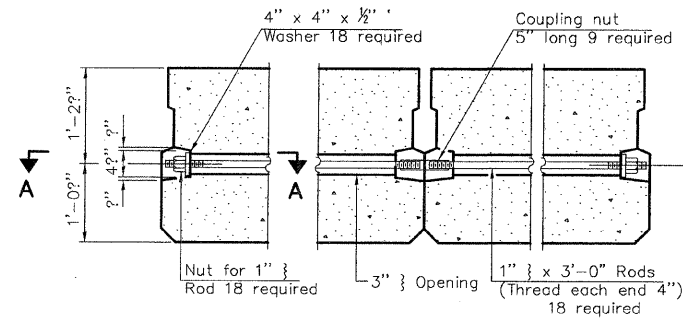
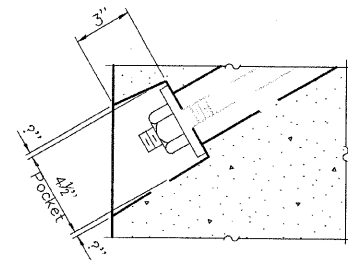
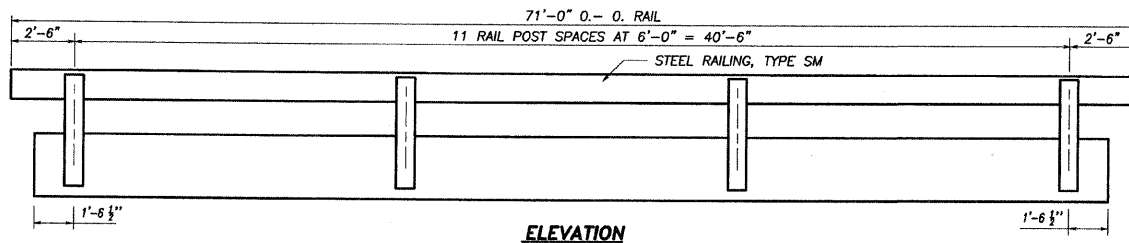
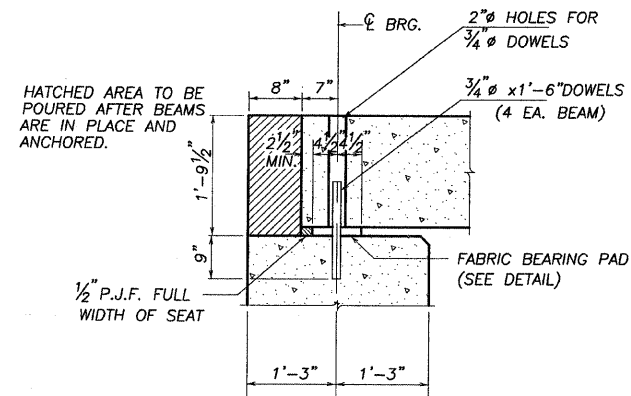
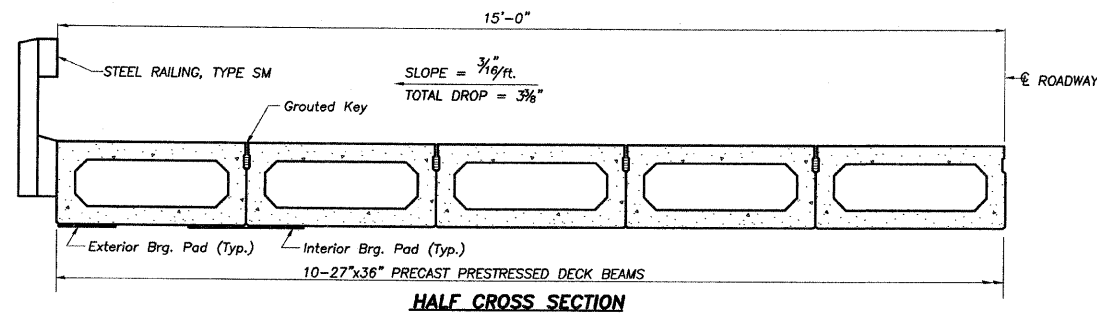


FIXED

Note: Omit holes when using expansion bearings.



Note: Connect beams in pairs with the transverse tie configuration shown. (2 assembly locations)



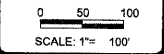
BILL OF MATERIAL

Precast Prestressed Conc. Deck Bms. (27" depth)	Sq. Ft.	2073
---	---------	------

27" X 36" PPC DECK BEAM DETAILS
STRUCTURE NO. 008-4014

NOTES

- Prestressing steel shall be uncoated high strength, low relaxation 7-wire strand, Grade 270. The nominal diameter shall be 1/2" and the nominal cross-sectional area shall be 0.153 sq. in.
- The 1" rods in the transverse tie assembly shall be tightened to a snug fit and the threads set. Pockets on exterior faces of bridge shall be filled with grout after transverse tie assembly is in place.
- Reinforcement bars shall conform to ASTM A 706, Grade 60. (See Special Provisions).
- Two 1/2" fabric adjusting shims of the dimensions of the exterior bearing pad shall be provided for each bearing pad location.
- A minimum 2 1/2" lifting pin shall be used to engage the lifting loops during handling.
- Corrosion Inhibitor, per Article 1020.05(b)(12) and 1021.06 of the Standard Specifications, shall be used in the concrete for precast prestressed concrete deck beams.
- Compressive strength of prestressed concrete, f'c, shall be 6000 psi.
- Compressive strength of prestressed concrete at release, f'ci, shall be 5000 psi.



REVISIONS

NO.	DATE	DESCRIPTION

DESIGNED BY: _____
CHECKED BY: _____
DATE: _____

wendler
 GROUND-BREAKING SOLUTIONS
 engineers surveyors scientists
 www.wendlerinc.com
 Illinois Professional Design Firm No. 164-00848

DECK BEAM DETAILS
 OF
OIL VALLEY SCHOOL ROAD BRIDGE
 FOR
CARROLL COUNTY HIGHWAY

SHEET TITLE

DECK BEAM DETAILS

JOB NUMBER
2100119

DATE
11/04/2010

SHEET NO.

7 of 10

SN 008-4014
36"X27" PPC DECK BEAM
SECTION 09-00088-00-BR
CARROLL COUNTY