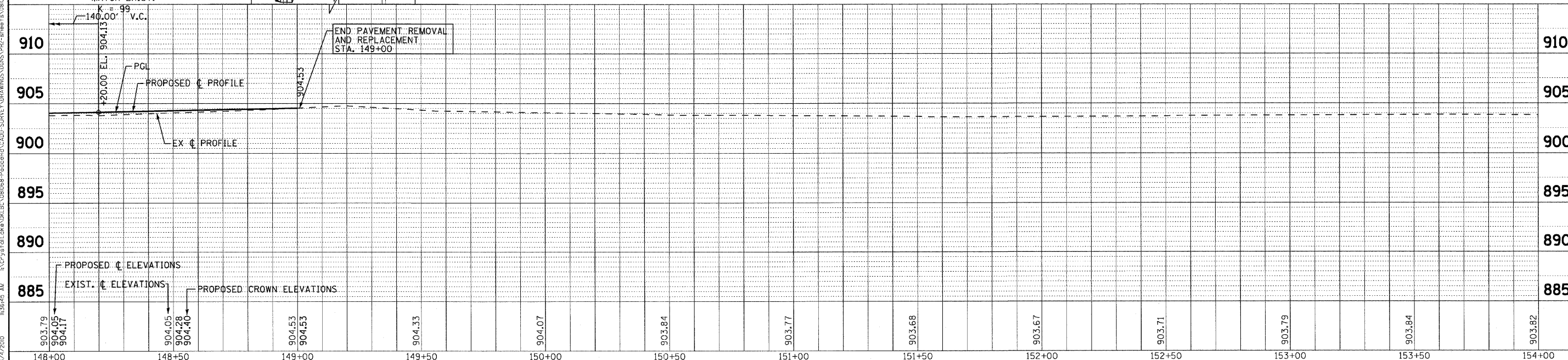


CURVE DATA
 PROP. CURVE C-3
 PI STA. = 148+55.35
 $\Delta = 13^\circ 51' 41''$ (RT)
 $D = 3^\circ 14' 13''$
 $R = 1,770.00'$
 $T = 215.16'$
 $L = 428.21'$
 $E = 13.03'$
 $e = NC$
 $T.R. = N/A$
 $S.E. RUN = N/A$
 $P.C. STA = 146+40.19$
 $P.T. STA = 150+68.41$



COPYRIGHT © 2005 BY BAXTER & WOODMAN, INC.
 ALL RIGHTS RESERVED. NO PART OF THIS DOCUMENT IS TO BE REPRODUCED OR TRANSMITTED IN ANY FORM OR BY ANY MEANS, ELECTRONIC OR MECHANICAL, INCLUDING PHOTOCOPYING, RECORDING, OR BY ANY INFORMATION STORAGE AND RETRIEVAL SYSTEM.
 LICENSE NO. 184-00071 - EXPIRES 1/30/2011
 8/7/2010 11:36:45 AM
 I:\CrystalLake\OKLBC\08068 - PeaceRoad\CAD\DWG\SURVEY\DRAWINGS\DWG\PH2-sheet1.dwg (08068 - PeaceRoad - 6E0 - pp.dwg)



DESIGNED -	DJS	REVISED -	8-04-2010 IDOT REVIEW
DRAWN -	UKB	REVISED -	
CHECKED -	RWL	REVISED -	
DATE -	05-03-2010	REVISED -	

**CITY OF DEKALB, ILLINOIS
 PEACE ROAD
 IMPROVEMENTS**

**GEOMETRICS
 PEACE ROAD**

SCALE: H: 1"=20' V: 1"=5'
 STA. 148+00 TO STA. 154+00

F.A.U. RTE.	SECTION	COUNTY	TOTAL SHEETS	SHEET NO.
5369	06-00172-00-WR	DeKALB	64	28
FED. ROAD DIST. NO. 3 (ILLINOIS)			CONTRACT NO. 87465	
FED. AID PROJECT M-5017 (043)				