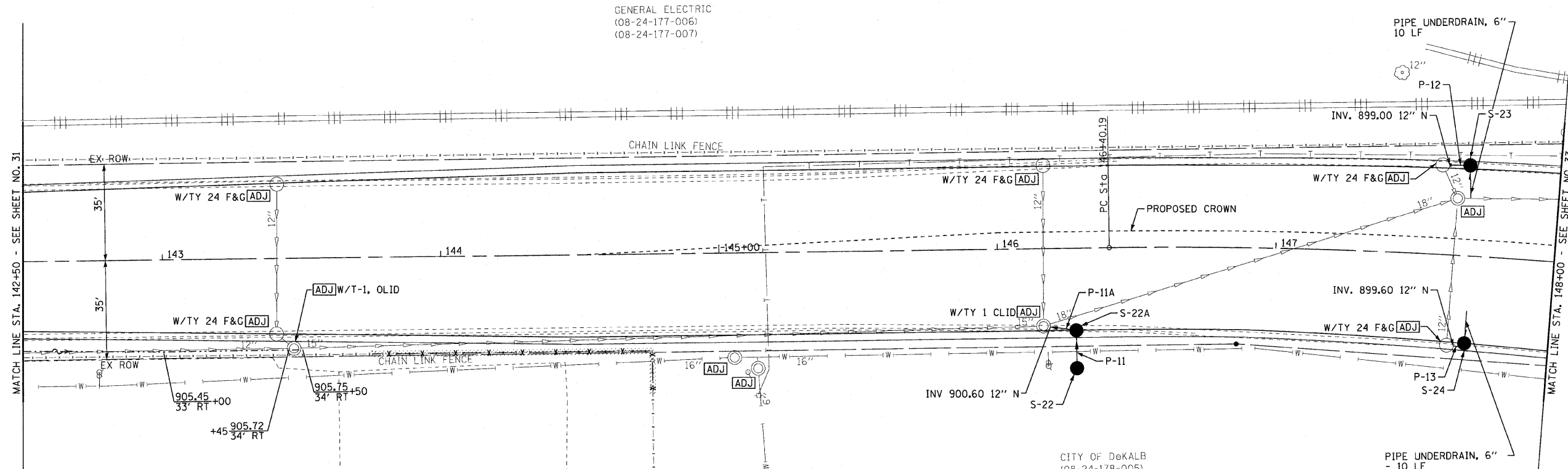


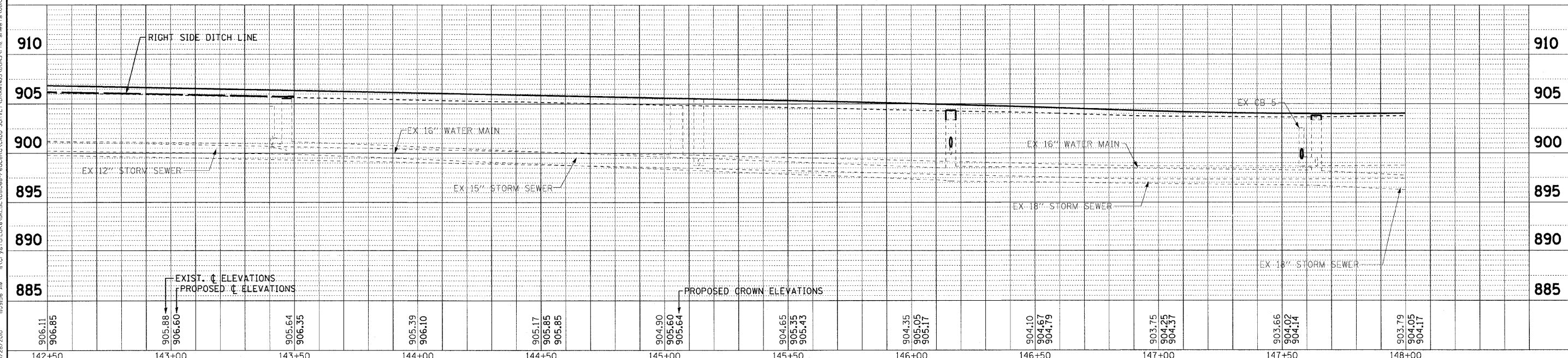
GENERAL ELECTRIC
(08-24-177-006)
(08-24-177-007)



PIPES					
NO.	TYPE	LENGTH (LF)	DIA (IN)	SLOPE	TBF (CY)
P-11	STORM SEWERS, (WATER MAIN REQUIREMENTS)	12	12	0.50%	1
P-11A	STORM SEWERS, (WATER MAIN REQUIREMENTS)	8	12	5.50%	2
P-12	STORM SEWERS, RUBBER GASKET, CLASS A, TYPE 1	10	12	6.40%	2
P-13	STORM SEWERS, (WATER MAIN REQUIREMENTS)	8	12	5.00%	3

STORM STRUCTURES						
NO.	STATION	OFFSET	TYPE	FRAME	RIM / EOP	INVERT
S-22	146+28	43' RT	DRAINAGE STRUCTURE SPECIAL	FRAME & LID, TYPE 1 OLID	904.10 RIM	901.10 12" S
S-22A	146+28	29.5' RT	DRAINAGE STRUCTURE SPECIAL	COMB. F&G TYPE 24	904.27 EOP	901.04 12" E & S
S-23	147+70	31.3' LT	DRAINAGE STRUCTURE SPECIAL	COMB. F&G TYPE 24	903.56 EOP	899.64 12" S
S-24	147+70	31.3' RT	DRAINAGE STRUCTURE SPECIAL	COMB. F&G TYPE 24	903.32 EOP	900.00 12" S

PEACE ROAD



DESIGNED - AMM	REVISED - 10-27-2010 IDOT REVIEW
DRAWN - UKB	REVISED -
CHECKED - RWL	REVISED -
DATE - 05-03-2010	REVISED -

**CITY OF DEKALB, ILLINOIS
PEACE ROAD
IMPROVEMENTS**

DRAINAGE AND UTILITY PEACE ROAD	
SCALE: H: 1"=20' V: 1"=5'	STA. 142+50 TO STA. 148+00

F.A.I. RTE. 5369	SECTION 06-00172-00-WR	COUNTY DeKALB	TOTAL SHEETS 64	SHEET NO. 32
FED. ROAD DIST. NO. 3 ILLINOIS FED. AID PROJECT M-5017 (043)			CONTRACT NO. 87465	

COPYRIGHT © 2008 BY BAXTER A. WOODMAN, INC.
 ALL RIGHTS RESERVED. NO PART OF THIS DOCUMENT IS TO BE REPRODUCED OR TRANSMITTED IN ANY FORM OR BY ANY MEANS, ELECTRONIC OR MECHANICAL, INCLUDING PHOTOCOPYING, RECORDING, OR BY ANY INFORMATION STORAGE AND RETRIEVAL SYSTEM.
 LICENSE NO. 184-00131 - EXPIRES 12/31/2011
 10/28/2010 10:35:56 AM