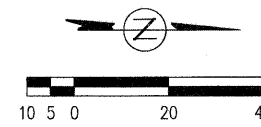
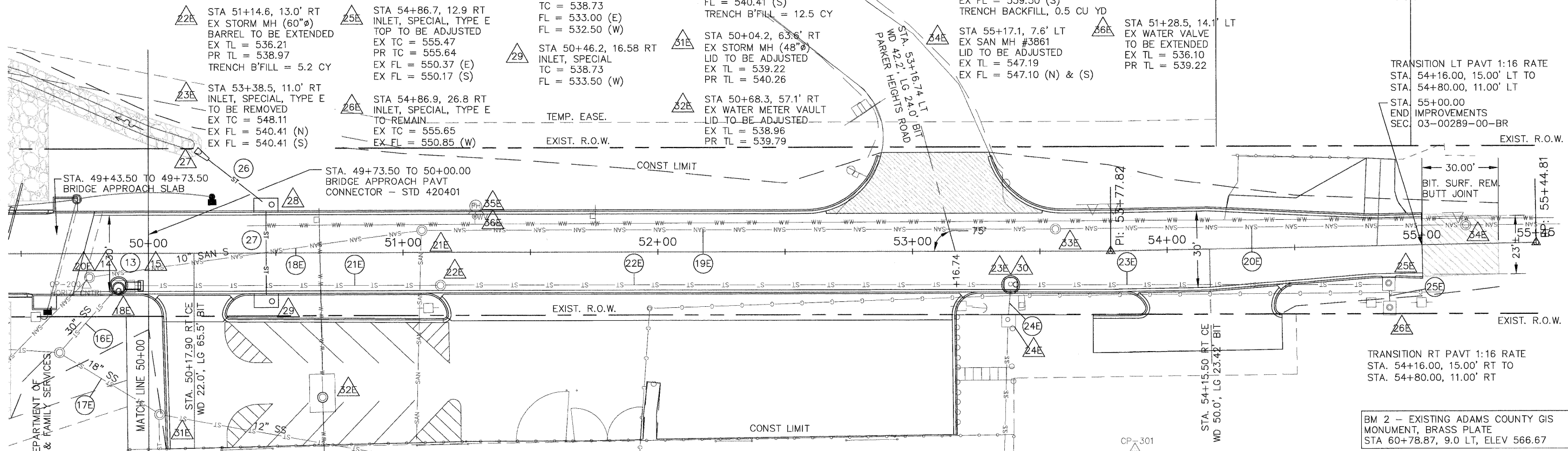


RTE.	SECTION	COUNTY	TOTAL SHEETS	SHEET NO.
N 5TH ST	03-00289-00-BR	ADAMS	90	28

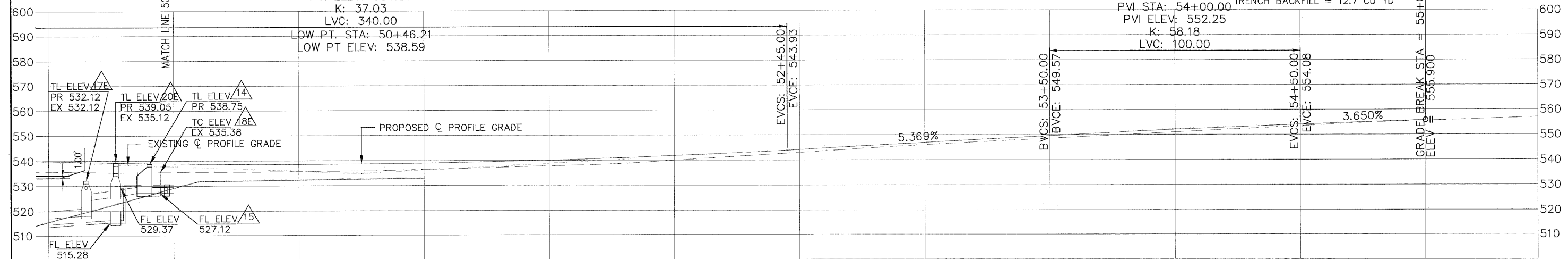
STA. 50+00.00 TO STA. 55+00.00  
CONTRACT NO. 93542



- 21E STA 51+07.4, 8.7' LT  
EX SAN MH #3859 (48"Ø)  
BARREL TO BE EXTENDED  
EX TL = 536.05  
PR TL = 538.92  
TRENCH B'FILL = 4.6 CY
- 22E STA 51+14.6, 13.0' RT  
EX STORM MH (60"Ø)  
BARREL TO BE EXTENDED  
EX TL = 536.21  
PR TL = 538.97  
TRENCH B'FILL = 5.2 CY
- 23E STA 53+38.5, 11.0' RT  
INLET, SPECIAL, TYPE E  
TO BE REMOVED  
EX TC = 548.11  
EX FL = 540.41 (N)  
EX FL = 540.41 (S)
- 24E STA 53+39.7, 27.3 RT  
INLET, SPECIAL, TYPE E  
TO REMAIN  
EX TC = 551.14  
EX FL = 543.36 (W)  
EX FL = 543.44 (E)
- 25E STA 54+86.7, 12.9 RT  
INLET, SPECIAL, TYPE E  
TOP TO BE ADJUSTED  
EX TC = 555.47  
PR TC = 555.64  
EX FL = 550.37 (E)  
EX FL = 550.17 (S)
- 26E STA 54+86.9, 26.8 RT  
INLET, SPECIAL, TYPE E  
TO REMAIN  
EX TC = 555.65  
EX FL = 550.85 (W)
- 27 STA 50+19.0, 40.6' LT  
PRCFES, 15"Ø  
FL = 532.00 (NE)
- 28 STA 50+46.2, 16.58 LT  
INLET, SPECIAL  
TC = 538.73  
FL = 533.00 (E)  
FL = 532.50 (W)
- 29 STA 50+46.2, 16.58 RT  
INLET, SPECIAL  
TC = 538.73  
FL = 533.50 (W)
- 30 STA 53+38.5, 13.2 RT  
MANHOLE, TYPE A, 6' DIA  
TYPE 1 FRAME, CLOSED LID  
T = 548.69  
FL = 540.47 (E)  
FL = 540.41 (N)  
FL = 540.41 (S)  
TRENCH B'FILL = 12.5 CY
- 31E STA 50+04.2, 63.6' RT  
EX STORM MH (48"Ø)  
LID TO BE ADJUSTED  
EX TL = 539.22  
PR TL = 540.26
- 32E STA 50+68.3, 57.1' RT  
EX WATER METER VAULT  
LID TO BE ADJUSTED  
EX TL = 538.96  
PR TL = 539.79
- 33E STA 53+56.3, 9.0' LT  
EX SAN MH #3860  
LID TO BE ADJUSTED  
EX TL = 548.62  
PR TL = 549.74  
EX FL = 539.52 (N)  
EX FL = 539.50 (S)  
TRENCH BACKFILL, 0.5 CU YD
- 35E STA 51+28.5, 18.0' LT  
EX FIRE HYDRANT  
TO BE EXTENDED  
EX GRND = 536.1  
PR TC = 539.64
- 36E STA 51+28.5, 14.1' LT  
EX WATER VALVE  
TO BE EXTENDED  
EX TL = 536.10  
PR TL = 539.22



- 18E EX SAN. SEWER, 10" CLAY  
130 FT @ 0.80%  
USFL 530.41  
DSFL 529.37
- 19E EX SAN. SEWER, 10" CLAY  
270 FT @ 3.34%  
USFL 539.50  
DSFL 530.49
- 20E EX SAN. SEWER, 10" CLAY  
160 FT @ 4.74%  
USFL 547.10  
DSFL 539.52
- 21E EX STORM SEWER, 30" CPVC  
120 FT @ 0.70%  
USFL 527.96  
DSFL 527.12
- 22E EX STORM SEWER, 30" CPVC  
220 FT @ 3.82%  
USFL 540.41  
DSFL 532.01
- 23E EX STORM SEWER, 12" RCP  
145 FT @ 6.73%  
USFL 550.17  
DSFL 540.41
- 24E EX STORM SEWER, 30" CPVC  
10 FT @ 28.9%  
USFL 543.36  
DSFL 540.47
- 25E EX STORM SEWER, 12" RCP  
6 FT @ 8.00%  
USFL 550.85  
DSFL 550.37
- 26 STORM SEWER, CL A, TY 1, 15"  
27 FT @ 1.52%  
USFL 532.50  
DSFL 532.09
- 27 STORM SEWER, (WMR) TY 1, 12"  
34 FT @ 1.47%  
USFL 533.50  
DSFL 533.00  
TRENCH BACKFILL = 12.7 CU YD



535.59	539.842	535.41	538.880	535.69	538.594	536.44	538.982	537.81	540.046	539.93	541.786	543.04	544.197	546.00	546.881	548.52	549.566	550.99	552.035	553.50	554.075	555.62	555.900	557.04
9+50		50+00		50+50		51+00		51+50		52+00		52+50		53+00		53+50		54+00		54+50		55+00		55+44.81