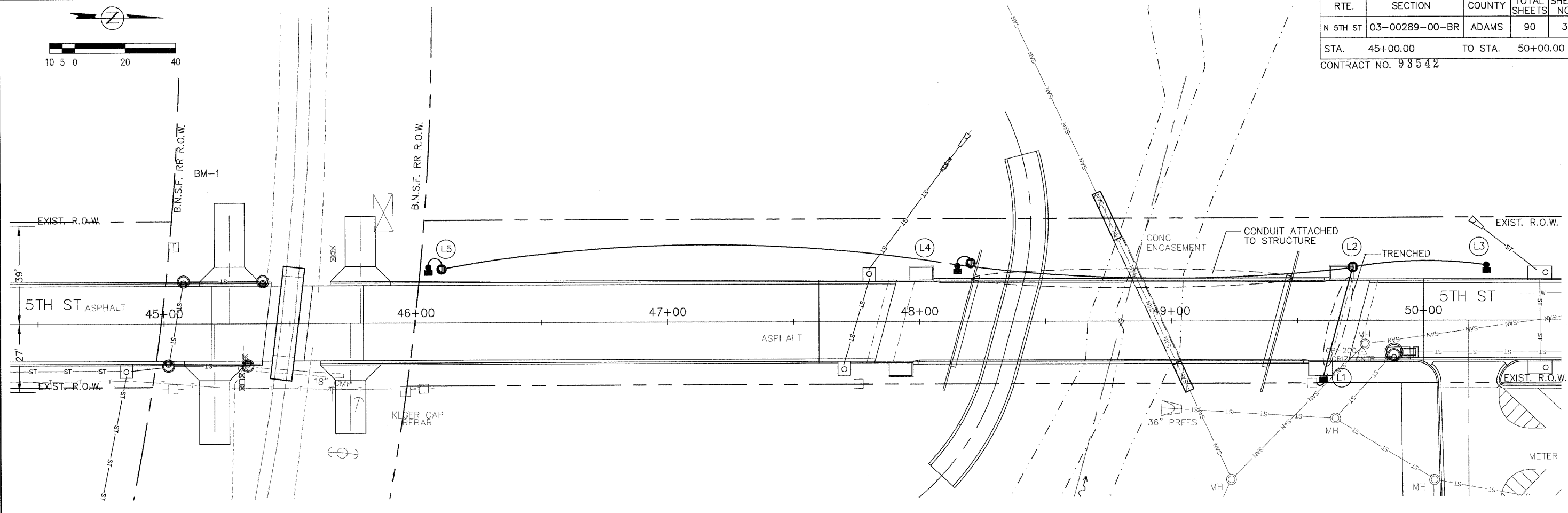


RTE.	SECTION	COUNTY	TOTAL SHEETS	SHEET NO.
N 5TH ST	03-00289-00-BR	ADAMS	90	36
STA.	45+00.00	TO STA.	50+00.00	
CONTRACT NO. 93542				



- (L1) STA. 49+60.0, 22.0 RT
NEW ELECTRICAL SERVICE CONNECTION
& LIGHTING CONTROLLER
- (L2) STA. 49+72.0, 22.0' LT
GULFBOX JUNCTION
- (L3) STA. 50+25.0, 22.0' LT
LUMINAIRE, LIGHT POLE,
FOUNDATION
- (L4) STA. 48+05.0, 22.0' LT
LUMINAIRE, LIGHT POLE,
FOUNDATION, GULFBOX JUNCTION
- (L5) STA. 46+05.0, 22.0' LT
LUMINAIRE, LIGHT POLE,
FOUNDATION, GULFBOX JUNCTION

SYMBOLS		
EXIST	NEW	
□	■	LIGHT POLE AND TURNPIKE LUMINAIRE
→	→	POWER POLE
○	●	PULL / JUNCTION BOX
□	■	DISCONNECT AND CONTROL ENCLOSURE

PSBA
 POEPPING, STONE, BACH & ASSOCIATES, INC.
 ARCHITECTS ENGINEERS PLANNERS SURVEYORS
 100 S 54TH ST, P.O. BOX 709 • QUINCY, IL 62306
 WITH OFFICES IN IKEOKUK, IOWA & HANNIBAL, MISSOURI
 www.psba.com • PHONE 877-223-4605

REVISIONS	
NAME	DATE

CITY OF QUINCY, ILLINOIS
 N. 5TH STREET BRIDGE
 LIGHTING PLAN
 SHEET 1 OF 3
 SCALE: VERT. _____
 HORIZ. _____
 DATE _____
 DRAWN BY: DBS
 CHECKED BY: AMW