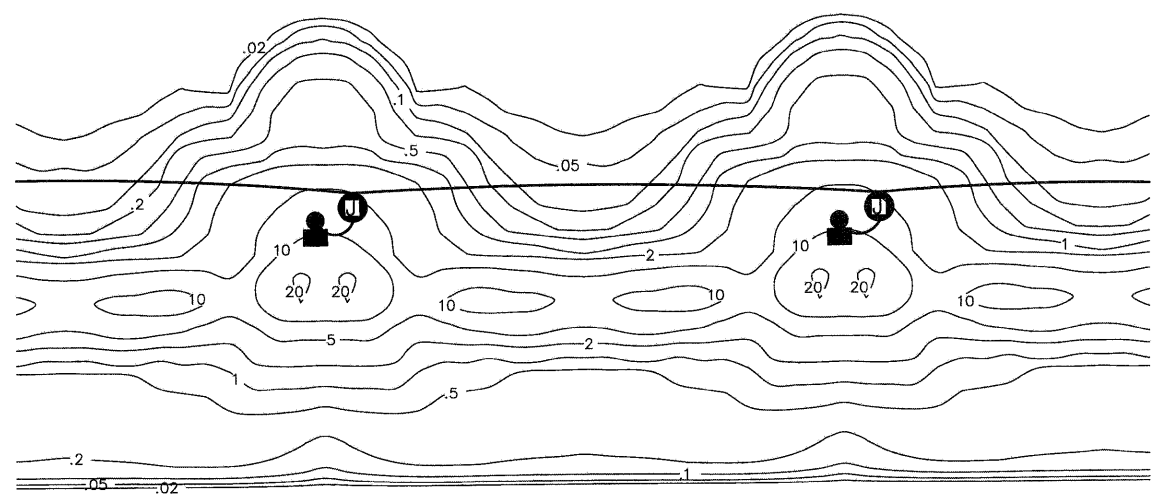


RTE.	SECTION	COUNTY	TOTAL SHEETS	SHEET NO.
N 5TH ST	03-00289-00-BR	ADAMS	90	37

CONTRACT NO. 93542

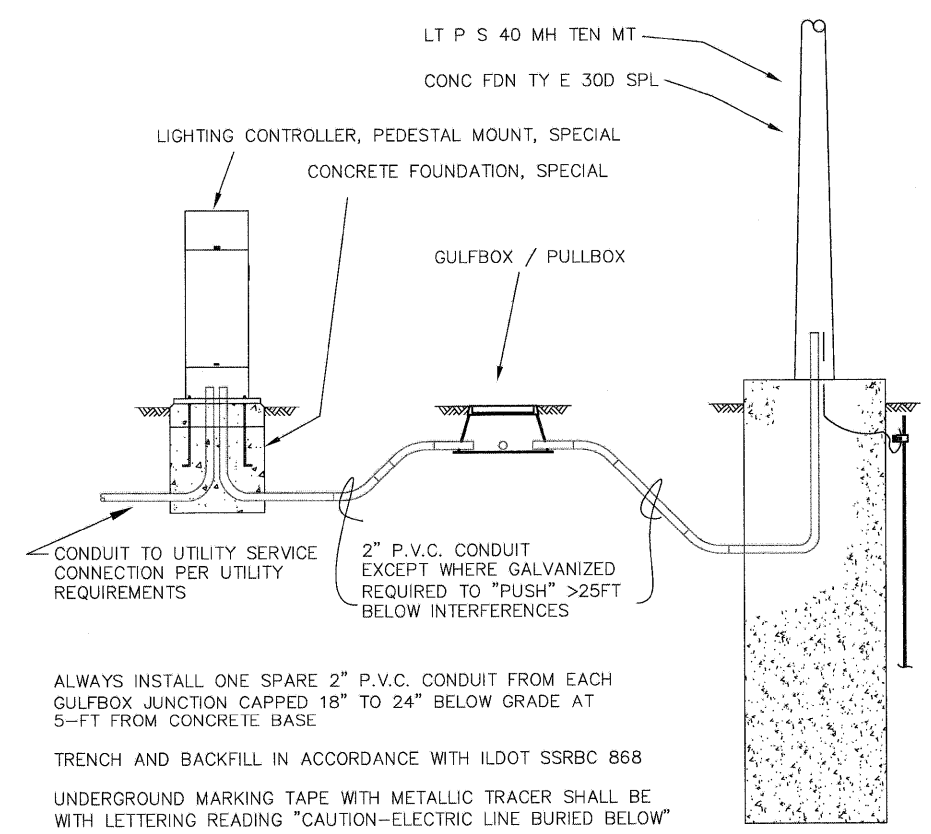
GENERAL NOTES

- SERVICE PEDESTAL AS DETAILED APPEARS IN PAY CODE ITEMS AS LIGHTING CONTROLLER PEDESTAL MOUNT.
- UTILITY SERVICE CONNECTIONS MAY BE EITHER 240V/120V SINGLE OR 208Y/120V THREE PHASE.
- CHANGE SERVICE LATERAL CONDUCTORS AND MAIN CIRCUIT BREAKER "C" TO THREE PHASE AND ADJUST ENCLOSURE WIRING FOR THREE PHASE SERVICE TO 'TYPE B MODIFIED'.
- SIMILAR FOR SERVICE PEDESTAL & LIGHTING CONTROLLER. MODIFY METER SOCKET, MAIN CIRCUIT BREAKERS, AND LOAD CENTER PANEL(S) AS REQUIRED.
- SERVICE EQUIPMENT ENCLOSURE AND METERING EQUIPMENT SHALL VARY AS NEEDED TO MEET THE REQUIREMENTS OF THE SPECIFIC SERVING UTILITY.
- A SEPARATE BUS SHALL BE PROVIDED FOR EACH CIRCUIT WHERE SHOWN ON CIRCUIT DRAWINGS IF THE SERVING UTILITY ALLOWS BOTH METERED AND UNMETERED CIRCUITS.
- MOUNTING BASE CONFIGURATION WILL VARY WITH VENDORS, CONTRACTOR SHALL ADJUST ANCHORS AS REQUIRED.
- SEE GENERAL NOTES FOR PAY CODE IDENTIFICATION.



LIGHT DISTRIBUTION BASED ON THE USE OF:
 GE TURNPIKE FIXTURE - KNUCKLE SLIPFITTER
 CATALOG # RPF5-24-S-0-A-1-G-MN2-GR-K
 250W HPS LAMP - TYPE M-N-III DISTRIBUTION
 LEADING TYPE AUTOREGULATOR BALLAST
 MN2 AT 3'3" SETBACK WITH 23' (-22' FROM 45') TILT:
 AVERAGE ILLUMINANCE = 8.46 LUX
 UNIFORMITY AS AVE./MIN. = 5.56
 GE IES ISO PLOT #8042
 SUBSTITUTION MUST PROVIDE SIMILAR OR BETTER
 DISTRIBUTION
 (ELECTRICAL SERVICE SHALL BE 240 VAC)

LIGHTING DESIGN BASED ON: ILDOT BUREAU OF
 DESIGN AND ENVIRONMENT MANUAL
 FIGURE 56-5B
 ILLUMINANCE DESIGN CRITERIA
 LOCAL ROADWAY - CONCRETE (R1)
 MINIMUM AVERAGE ILLUMINANCE
 COMMERCIAL 6 LUX
 INTERMEDIATE 5 LUX
 RESIDENTIAL 3 LUX
 UNIFORMITY RATIO < 6:1

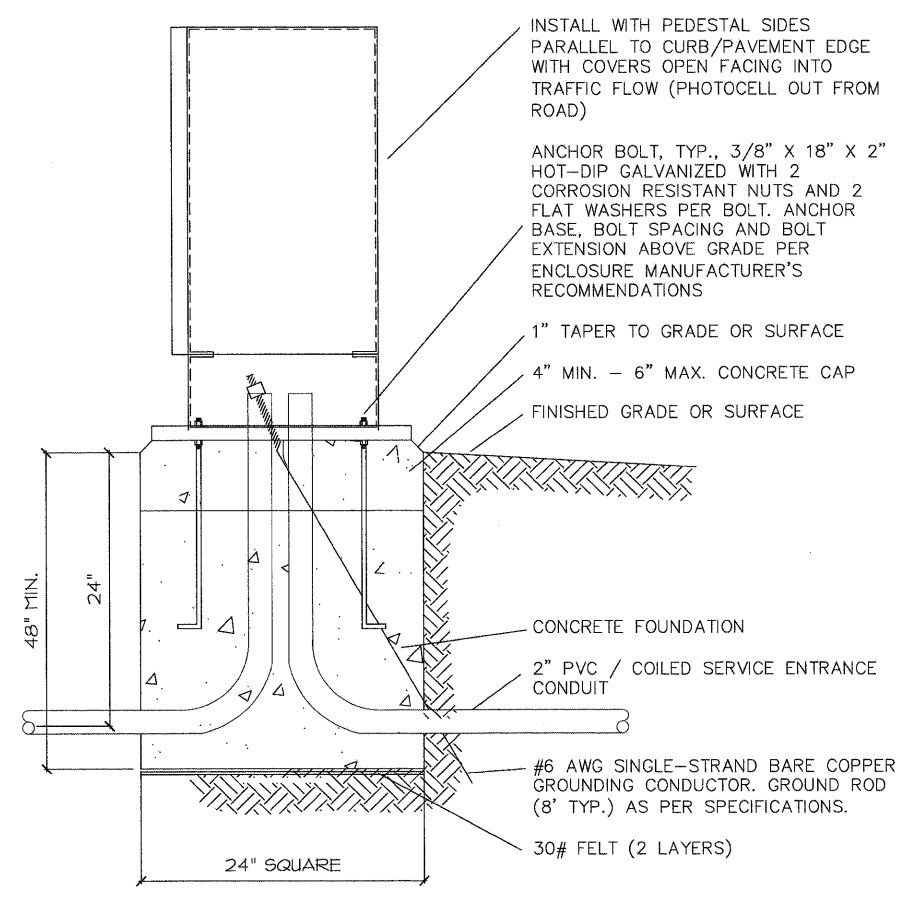


ALWAYS INSTALL ONE SPARE 2" P.V.C. CONDUIT FROM EACH GULFBOX JUNCTION CAPPED 18" TO 24" BELOW GRADE AT 5-FT FROM CONCRETE BASE

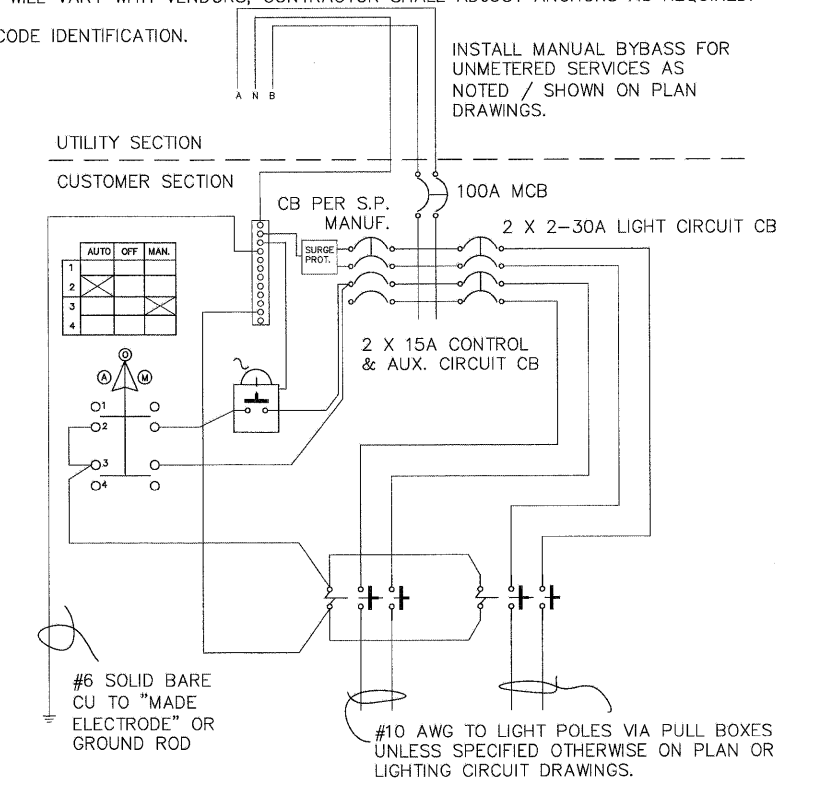
TRENCH AND BACKFILL IN ACCORDANCE WITH ILDOT SSRBC 868

UNDERGROUND MARKING TAPE WITH METALLIC TRACER SHALL BE WITH LETTERING READING "CAUTION-ELECTRIC LINE BURIED BELOW"

TYPICAL ROADWAY LIGHTING CIRCUIT EQUIPMENT
 NO SCALE



SERVICE PEDESTAL & LIGHTING CONTROLLER
 NO SCALE



SELECTOR SWITCH SHALL HAVE MARKED POSITIONS, "AUTO", "OFF", "ON" WITH METAL OR ENGRAVED PLASTIC NAME PLATE.

PEDESTAL CONTROL WIRING SHALL BE #12 AWG, AND PEDESTAL LIGHTING CIRCUIT WIRING SHALL BE #8 AWG. ALL CONDUCTORS AND CABLES SHALL COMPLY WITH ILDOT SSRBC (1997) SECTIONS 1085.25&26 AS APPLICABLE.

PHOTOCONTROL MAY BE EITHER RECEPTACLE MOUNTED OR BRACKET MOUNTED.

MAIN CB SHALL BE RATED 600V WITH FRAME SIZE OF 225A. TWO POLE BRANCH BREAKERS SHALL BE RATED 600V, SINGLE POLE BRANCH BREAKERS RATED 277V. PANELBOARD SHALL ALLOW REPLACEMENT OF ANY BRANCH CIRCUIT BREAKER WITHOUT DISTURBING ADJACENT BREAKERS OR OTHER CIRCUITS.

SERVICE & CONTROLLER WIRING DIAGRAM
 NO SCALE

PSBA
 POEPPING, STONE, BACH & ASSOCIATES, INC.
 ARCHITECTS ENGINEERS PLANNERS SURVEYORS
 100 S 54TH ST, P.O. BOX 709 • QUINCY, IL 62306
 WITH OFFICES IN IKEOKUK, IOWA & HANNIBAL, MISSOURI
 www.psba.com • PHONE 877-223-4605

REVISIONS	
NAME	DATE

CITY OF QUINCY, ILLINOIS
 N. 5TH STREET BRIDGE
 LIGHTING PLAN
 SHEET 2 OF 3

SCALE: VERT. DATE
 HORIZ. DATE

DRAWN BY: DBS
 CHECKED BY: AMW