

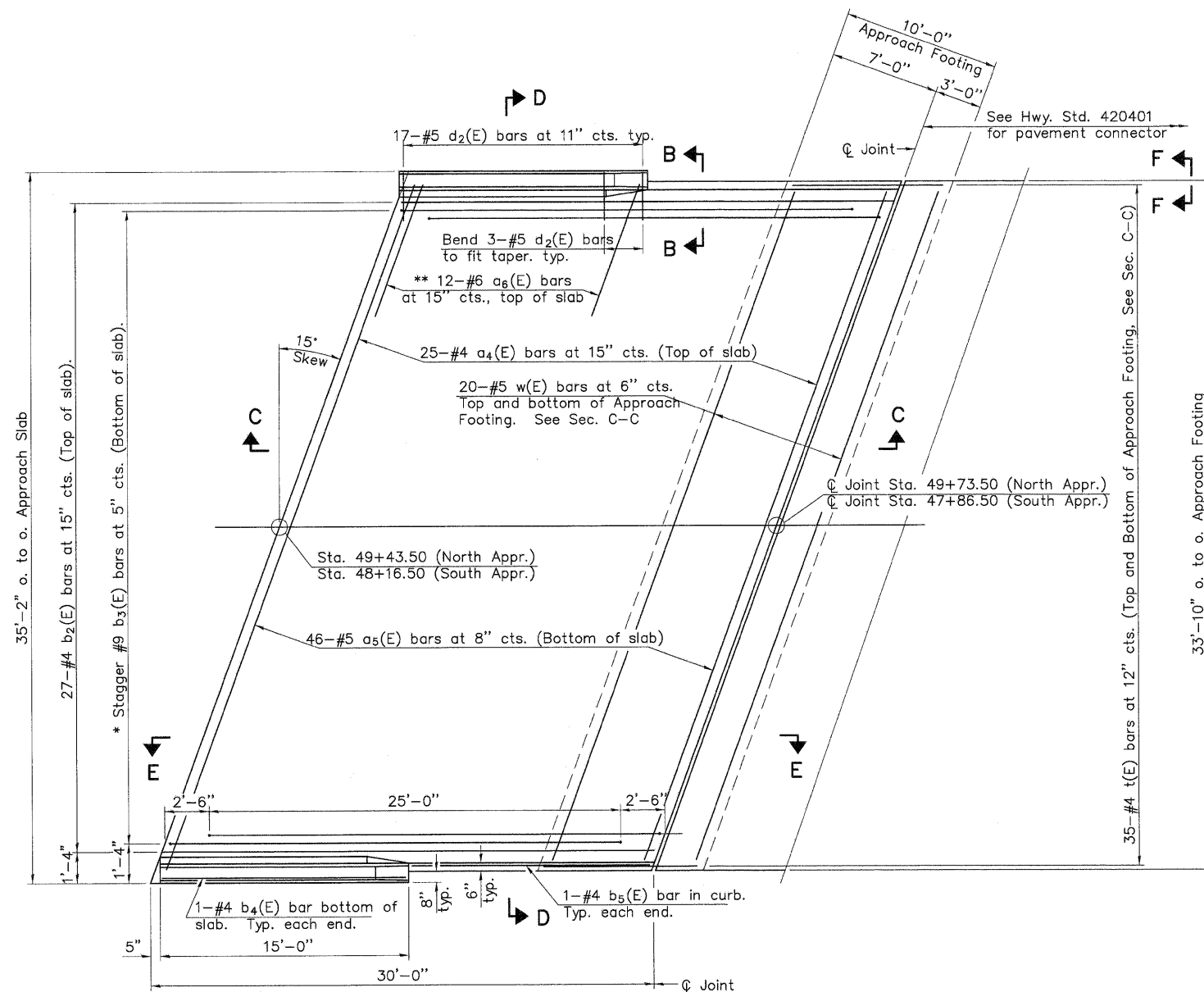
RTE.	SECTION	COUNTY	TOTAL SHEETS	SHEET NO.
N 5TH ST	03-00289-00-BR	ADAMS	90	47

BRIDGE APPROACH SLAB DETAILS

CONTRACT NO. 93542

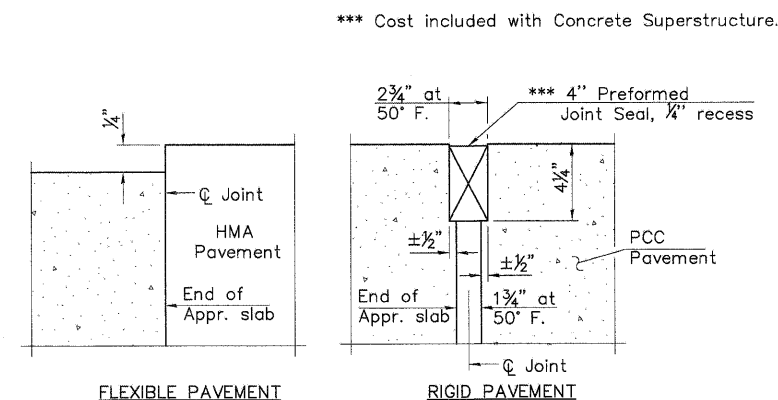
SHEET 9 OF 18

Notes:
See sheet 10 of 18 for Sections C-C & D-D and View E-E.
a₄(E) and a₅(E) bar spacings measured along ϕ Rdwy.

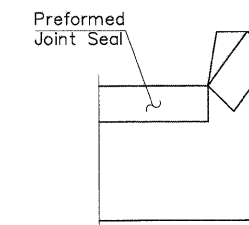
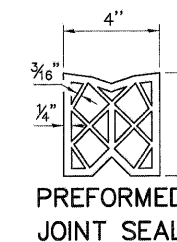


PLAN

* Tilt #9 b₃(E) bars as required to maintain clearance.
** Space between a₄(E) bars, typ. each parapet.

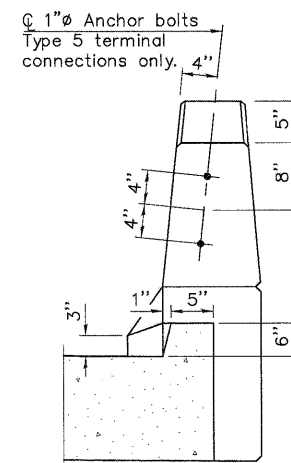


DETAIL A



VIEW F-F

Angle Preformed Joint Seal at 45° at curbs when req'd for drainage.



VIEW B-B

BRIDGE APPROACH SLAB DETAILS
STRUCTURE NO. 001-6012

(Sheet 1 of 2)

DESIGNED	D.S.P.
CHECKED	C.S.B.
DRAWN	D.S.P.
CHECKED	C.S.B.

EXAMINED	20
PASSED	

PSBA
POEPPING, STONE, BACH & ASSOCIATES, INC.
ARCHITECTS, ENGINEERS, PLANNERS, SURVEYORS
100 S 84TH ST., P.O. BOX 709 • QUINCY, IL 62306
WITH OFFICES IN IKEOKUK, IOWA & HANNIBAL, MISSOURI
www.psba.com • PHONE 877-223-4605

REVISIONS	
NAME	DATE

CITY OF QUINCY, ILLINOIS
N. 5TH STREET BRIDGE
BRIDGE APPROACH SLAB DETAILS

SCALE: VERT.
HORIZ.
DATE

DRAWN BY: DSP
CHECKED BY: CSE

BA-L

11-1-09