

INDEX OF SHEETS

SHEET NO.	TITLE
1	COVER SHEET
2	INDEX OF SHEETS, STATE STANDARDS, AND GENERAL NOTES
3	SUMMARY OF QUANTITIES
4-17	TRAFFIC CONTROL PLANS
18	ROADWAY PLAN
19-35	STRUCTURAL DRAWINGS - S.N. 016-0364
36	BUTT JOINT AND HMA TAPER DETAILS (BD-32)
37	ENTRANCE AND EXIT RAMP CLOSURE DETAILS (TC-8)
38	TRAFFIC CONTROL AND PROTECTION FOR SIDE ROADS, INTERSECTIONS, AND DRIVEWAYS (TC-10)
39	TYPICAL APPLICATIONS RAISED - REFLECTIVE PAVEMENT MARKERS (SNOW-PLOW RESISTANT) (TC-11)
40	DISTRICT ONE TYPICAL PAVEMENT MARKINGS (TC-13)
41	TRAFFIC CONTROL DETAILS FOR FREEWAY - SHOULDER CLOSURES AND PARTIAL RAMP CLOSURES (TC-17)
42	DETOUR SIGNING FOR CLOSING STATE HIGHWAYS (TC-21)
43	ARTERIAL ROAD INFORMATION SIGN (TC-22)
44-46	CITY OF CHICAGO TYPICAL PAVEMENT MARKINGS (TC-24)

STATE STANDARDS

STANDARD NO.	DRAWING NAME
000001-08	STANDARD SYMBOLS, ABBREVIATIONS AND PATTERNS
701400-11	APPROACH TO LANE CLOSURE, FREEWAY/EXPRESSWAY
701402-12	LANE CLOSURE, FREEWAY/EXPRESSWAY, WITH BARRIER
701411-09	LANE CLOSURE, MULTILANE, AT ENTRANCE OR EXIT RAMP, FOR SPEEDS ≥ 45 MPH
701423-10	LANE CLOSURE, MULTILANE, WITH BARRIER, FOR SPEEDS ≥ 45 MPH TO 55 MPH
701426-09	LANE CLOSURE, MULTILANE, INTERMITTENT OR MOVING OPER., FOR SPEEDS ≥ 45 MPH
701427-05	LANE CLOSURE, MULTILANE, INTERMITTENT OR MOVING OPER., FOR SPEEDS ≤ 40 MPH
701428-01	TRAFFIC CONTROL SETUP AND REMOVAL FREEWAY/EXPRESSWAY
701451-05	RAMP CLOSURE FREEWAY/EXPRESSWAY
701601-09	URBAN LANE CLOSURE, MULTILANE, 1W OR 2W WITH NONTRAVERSABLE MEDIAN
701801-06	SIDEWALK, CORNER OR CROSSWALK CLOSURE
701901-08	TRAFFIC CONTROL DEVICES
704001-08	TEMPORARY CONCRETE BARRIER
780001-05	TYPICAL PAVEMENT MARKINGS
782006-01	GUARDRAIL AND BARRIER WALL REFLECTOR MOUNTING DETAILS

HMA TABLE

HOT-MIX ASPHALT MIXTURE REQUIREMENTS		AIR VOIDS @ Ndes	QUALITY MANAGEMENT PROGRAM (QMP)
MIXTURE TYPE	BUTT JOINT		
HOT-MIX ASPHALT SURFACE COURSE, MIX "D", IL-9.5, N70, 1-1/2"		4% @ 70 Gyr	QC/QA
QMP DESIGNATION: QUALITY CONTROL/ QUALITY ASSURANCE (QC/QA): QUALITY CONTROL FOR PERFORMANCE (QCP): PAY FOR PERFORMANCE (PFP)			
MIXTURE REQUIREMENT NOTES: 1.THE UNIT WEIGHT USED TO CALCULATE ALL HMA SURFACE MIXTURE QUANTITIES IS 112 LBS/SQ YD/IN. 2.THE "AC TYPE" FOR POLYMERIZED HMA MIXES SHALL BE "SBS/SBR PG 76 -22" AND FOR NON-POLYMERIZED HMA THE "AC TYPE" SHALL BE "PG 64 -22" UNLESS MODIFIED BY RECLAIMED MATERIALS SPECIFICATIONS.			

GENERAL NOTES

- BEFORE STARTING ANY EXCAVATION, THE CONTRACTOR SHALL CALL "C.U.A.N." AT 1-312-744-7000 OR 811 FOR FIELD LOCATIONS OF BURIED ELECTRIC, TELEPHONE, AND GAS UTILITIES. 48 HOUR NOTIFICATION IS REQUIRED.
- THE EXACT LOCATION OF ALL UTILITIES SHALL BE FIELD VERIFIED BY THE CONTRACTOR BEFORE ORDERING ANY MATERIALS AND STARTING ANY WORK. FOR LOCATIONS OF UTILITIES, LOCALLY OWNED EQUIPMENT, LEASED ENFORCEMENT CAMERA SYSTEM FACILITIES AND IDOT UNDERGROUND FACILITIES, CONTACT THE LOCAL COUNTIES, MUNICIPALITIES AND IDOT FOR LOCATES.
- MEADE ELECTRIC COMPANY, THE IDOT DISTRICT ONE ELECTRICAL MAINTENANCE CONTRACTOR, LOCATES IDOT ELECTRICAL EQUIPMENT AND UNDERGROUND CABLES. CALL 773-287-7672 FOR THE INITIAL LOCATE. REQUEST FOR LOCATES OF PREVIOUSLY MARKED FACILITIES MAY BE AT THE CONTRACTOR'S EXPENSE.
- IN ADDITION TO FIELD REVIEW AND AERIAL DATA, PLAN DIMENSIONS AND DETAILS RELATIVE TO THE EXISTING FACILITIES HAVE BEEN TAKEN FROM EXISTING PLANS AND ARE SUBJECT TO CONSTRUCTION VARIATIONS. PLAN DIMENSIONS AND DETAILS RELATIVE TO EXISTING PLANS ARE SUBJECT TO ROUTINE VARIATIONS. IT SHALL BE THE CONTRACTOR'S RESPONSIBILITY TO VERIFY EXISTING DIMENSIONS AND DETAILS AFFECTING NEW CONSTRUCTION AND MAKE NECESSARY APPROVED ADJUSTMENTS PRIOR TO CONSTRUCTION OR ORDERING MATERIALS. SUCH VARIATIONS SHALL NOT BE CAUSE FOR ADDITIONAL COMPENSATION FOR A CHANGE IN THE SCOPE OF WORK. HOWEVER, THE CONTRACTOR WILL BE PAID FOR THE QUANTITY ACTUALLY FURNISHED AT THE BID PRICE FOR THE WORK.
- THE CONTRACTOR SHALL COORDINATE CONSTRUCTION ACTIVITIES WITH UTILITY COMPANIES, AND THE CITY OF CHICAGO.
- THE CONTRACTOR WILL NOT BE ALLOWED TO SET UP A YARD OR FIELD OFFICE ON STATE PROPERTY WITHOUT WRITTEN PERMISSION FROM THE DEPARTMENT.
- IT SHALL BE THE CONTRACTOR'S RESPONSIBILITY TO VERIFY ALL DIMENSIONS AND CONDITIONS EXISTING IN THE FIELD PRIOR TO BEGINNING CONSTRUCTION AND ORDERING MATERIALS.
- DO NOT SCALE PLANS FOR CONSTRUCTION DIMENSIONS.
- THE CONTRACTOR SHALL BE REQUIRED TO PROVIDE ACCESS TO ABUTTING PROPERTY AT ALL TIMES DURING THE CONSTRUCTION OF THIS PROJECT.
- BEFORE BEGINNING ANY WORK, THE CONTRACTOR SHALL RETAIN AND RECORD FOR FUTURE REFERENCE, ALL EXISTING PAVEMENT MARKING LINES (AND RAISED REFLECTIVE PAVEMENT MARKERS) IN ORDER THAT THESE LOCATIONS CAN BE RE-ESTABLISHED FOR STRIPING. EXACT LOCATIONS OF ALL PAVEMENT MARKINGS SHALL BE AS SHOWN ON THE PLANS OR AS DIRECTED BY THE ENGINEER.
- THE CONTRACTOR SHALL CONTACT THE DISTRICT ONE TRAFFIC CONTROL SUPERVISOR AT KALPANA.KANNAN-HOSADURGA@ILLINOIS.GOV A MINIMUM OF 72 HOURS IN ADVANCE OF BEGINNING WORK.
- THE RESIDENT ENGINEER SHALL CONTACT EMAD ALHUSSEINI, AREA TRAFFIC FIELD ENGINEER, AT EMAD.ALHUSSEINI@ILLINOIS.GOV A MINIMUM OF TWO (2) WEEKS PRIOR TO THE PLACEMENT OF PERMANENT PAVEMENT MARKINGS.
- THESE PLANS HAVE BEEN PREPARED FROM NOTES RECEIVED FROM I.D.O.T. FIELD MAINTENANCE ENGINEERS.
- THE CONTRACTOR SHALL USE CARE IN REMOVING OR EXCAVATING NEAR ALL EXISTING ITEMS WHICH WILL REMAIN. ANY DAMAGE DONE TO EXISTING ITEMS BY THE CONTRACTOR SHALL BE REPAIRED AT THE CONTRACTOR'S EXPENSE.
- SAW CUTTING PRIOR TO ANY REMOVAL ITEMS NOTED ON THE PLANS OR DIRECTED BY THE ENGINEER SHALL BE CONSIDERED INCLUDED IN THE COST OF THE ITEMS BEING REMOVED.
- ANY SIGNAGE, PAVEMENT MARKINGS AND REFLECTORS DAMAGED DURING CONSTRUCTION OUTSIDE THE REMOVAL LINES SHOWN ON THE PLANS SHALL BE REPLACED AT THE CONTRACTOR'S EXPENSE.
- FOR WORK OUTSIDE THE LIMITS OF BRIDGE APPROACH PAVEMENT, ALL REFERENCES IN THE HIGHWAY STANDARDS AND STANDARD SPECIFICATIONS FOR REINFORCEMENT, DOWEL BARS AND TIE BARS IN PAVEMENT SHALL BE EPOXY COATED UNLESS NOTED ON THE PLANS.
- DOUBLE LANE MARKERS ARE TO BE USED AS SHOWN ON THE DISTRICT ONE DETAIL "TYPICAL APPLICATIONS-RAISED REFLECTIVE PAVEMENT MARKERS (SNOW-PLOW RESISTANT)" SHOWN IN PLANS.
- THE CENTERLINE IS FOR INFORMATION ONLY.

MODEL: Defaul
FILE NAME: P:\2020\20-4094-00 IDOT Various Phase 2 (PFB) 106 Item 16\Work Order 18\IDOT\CADD_Sheets\162\MS-Lit-egenotes.dgn

REVISD SHEET 2/24/2022

	USER NAME = ALane	DESIGNED - MLD	REVISED - ACL 2/8/2022	STATE OF ILLINOIS DEPARTMENT OF TRANSPORTATION	INDEX OF SHEETS, STATE STANDARDS, AND GENERAL NOTES I-94 AT US-14 (PETERSON AVE)	F.A.I. RTE.	SECTION	COUNTY	TOTAL SHEETS	SHEET NO.
	PLOT SCALE = 240,0000' / ft.	CHECKED - ACL	REVISED -			94	2020-165-BR	COOK	46	2
PLOT DATE = 2/8/2022	DATE - 10/15/2021	REVISED -		SCALE: SHEET OF SHEETS STA. TO STA.		ILLINOIS FED. AID PROJECT CONTRACT NO. 62M51				

PAY ITEM NUMBER	DESIGNATION	UNIT	URBAN		CONSTRUCTION CODE
			TOTAL QUANTITY	90% FEDERAL 10% STATE	0059
40600982	HOT-MIX ASPHALT SURFACE REMOVAL - BUTT JOINT	SQ YD	559	599	
42001300	PROTECTIVE COAT	SQ YD	2,452	2,452	
40604062	HOT-MIX ASPHALT SURFACE COURSE, IL-9.5, MIX "D", N70	TON	48	48	
50102400	CONCRETE REMOVAL	CU YD	27.0	27.0	
40600290	BITUMINOUS MATERIAL (TACK COAT)	POUND	251	251	
50157300	PROTECTIVE SHIELD	SQ YD	1,152	1,152	
50300255	CONCRETE SUPERSTRUCTURE	CU YD	27.0	27.0	
50300260	BRIDGE DECK GROOVING	SQ YD	2,331	2,331	
5000205	REINFORCEMENT BARS, EPOXY COATED	POUND	2,790	2,790	
5000515	BAR SPLICERS	EACH	32	32	
52000110	PREFORMED JOINT STRIP SEAL	FOOT	101	101	
67100100	MOBILIZATION	L SUM	1	1	
70107025	CHANGEABLE MESSAGE SIGN	CAL DA	140	140	
70200100	NIGHTTIME WORK ZONE LIGHTING	L SUM	1	1	
70300150	SHORT TERM PAVEMENT MARKING REMOVAL	SQ FT	1,960	1,960	
70307120	TEMPORARY PAVEMENT MARKING - LINE 4" - TYPE IV TAPE	FOOT	5,903	5,903	
70400100	TEMPORARY CONCRETE BARRIER	FOOT	2,662.5	2,662.5	
70400200	RELOCATE TEMPORARY CONCRETE BARRIER	FOOT	1,406	1,406	
70600240	IMPACT ATTENUATORS, TEMPORARY (NON- REDIRECTIVE), TEST LEVEL 2	EACH	2	2	
70600260	IMPACT ATTENUATORS, TEMPORARY (FULLY REDIRECTIVE, NARROW), TEST LEVEL 3	EACH	2	2	
70600332	IMPACT ATTENUATORS, RELOCATE (FULLY REDIRECTIVE, NARROW), TEST LEVEL 3	EACH	2	2	
70600340	IMPACT ATTENUATORS, RELOCATE (NON- REDIRECTIVE), TEST LEVEL 2	EACH	2	2	
* 70009000	MODIFIED URETHANE PAVEMENT MARKING - LETTERS AND SYMBOLS	SQ FT	100	100	
* 70009004	MODIFIED URETHANE PAVEMENT MARKING - LINE 4"	FOOT	1,197	1,197	
* 70009006	MODIFIED URETHANE PAVEMENT MARKING - LINE 6"	FOOT	150	150	
78100100	RAISED REFLECTIVE PAVEMENT MARKING	EACH	54	54	
* 70200011	BARRIER WALL REFLECTORS, TYPE C	EACH	57	57	

* = SPECIALTY ITEM

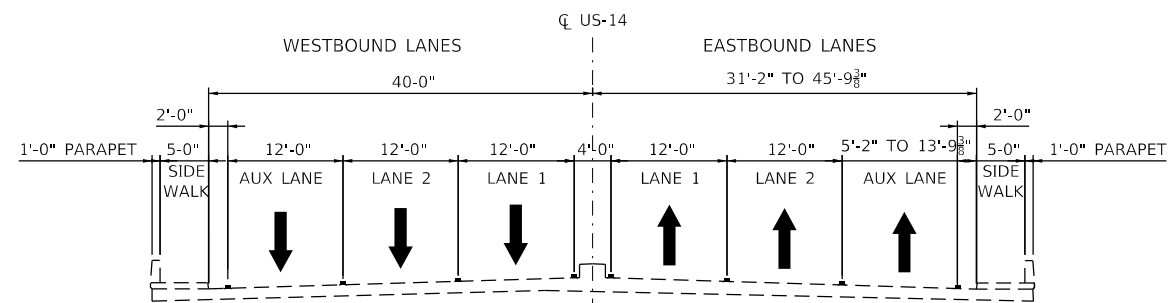
PAY ITEM NUMBER	DESIGNATION	UNIT	URBAN		CONSTRUCTION CODE
			TOTAL QUANTITY	90% FEDERAL 10% STATE	0059
78300200	RAISED REFLECTIVE PAVEMENT MARKING REMOVAL	EACH	54	54	
70300202	PAVEMENT MARKING REMOVAL - WATER BLASTING	SQ FT	245	245	
X0326766	CLEAN & RESEAL RELIEF JOINT	FOOT	182	182	
X6700407	ENGINEER'S FIELD OFFICE, TYPE A (D1)	CAL MO	12	12	
X7010216	TRAFFIC CONTROL AND PROTECTION, (SPECIAL)	L SUM	1	1	
X7011015	TRAFFIC CONTROL AND PROTECTION (EXPRESSWAYS)	L SUM	1	1	
Z0004562	COMBINATION CONCRETE CURB AND GUTTER REMOVAL AND REPLACEMENT	FOOT	31	31	
Z0006014	BRIDGE DECK LATEX CONCRETE OVERLAY, 2 1/2 INCHES	SQ YD	2,384	2,384	
Z0012130	BRIDGE DECK SCARIFICATION 3/4"	SQ YD	2,384	2,384	
Z0012754	STRUCTURAL REPAIR OF CONCRETE (DEPTH EQUAL TO OR LESS THAN 5 INCHES)	SQ FT	2,316	2,316	
Z0012755	STRUCTURAL REPAIR OF CONCRETE (DEPTH GREATER THAN 5 INCHES)	SQ FT	20	20	
Z0015500	DEBRIS REMOVAL	L SUM	1	1	
Z0015002	PLUG EXISTING DECK DRAINS	EACH	12	12	
Z0016002	DECK SLAB REPAIR (FULL DEPTH, TYPE II)	SQ YD	4	4	
Z0030050	TEMPORARY INFORMATION SIGNING	SQ FT	512	512	
Z0073200	TEMPORARY SHORING AND CRIBBING	EACH	25	25	
Z0073510	TEMPORARY TRAFFIC SIGNAL TIMING	EACH	10	10	
* 70000200	THERMOPLASTIC PAVEMENT MARKING - LINE 4"	FOOT	504	504	
* 70000400	THERMOPLASTIC PAVEMENT MARKING - LINE 6"	FOOT	46	46	
* 70000500	THERMOPLASTIC PAVEMENT MARKING - LINE 8"	FOOT	216	216	
* 70000600	THERMOPLASTIC PAVEMENT MARKING - LINE 12"	FOOT	17	17	
* 70003137	PREFORMED PLASTIC PAVEMENT MARKING TYPE B - LINE 7"	FOOT	150	150	
* 70011040	GROOVING FOR RECESSED PAVEMENT MARKER 0"	FOOT	150	150	
Ø Z0076600	TRAINEES	HOURS	500	500	
Ø Z0076604	TRAINEES - TRAINING PROGRAM GRADUATE	HOURS	500	500	

MODEL: Default
FILE NAME: P:\2020-09-04-00 IDOT Various Phase 2 (P78, 196 Item) 16\Work Order 1802\CAD\DD Sheets\0162\MS1-1st-09-01.dgn

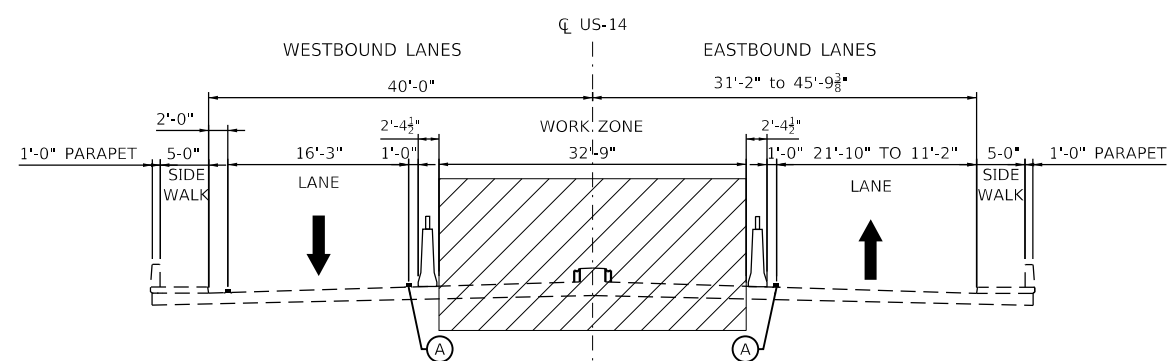


REVISION 1 REVISED SHEET 2/25/2022 0042

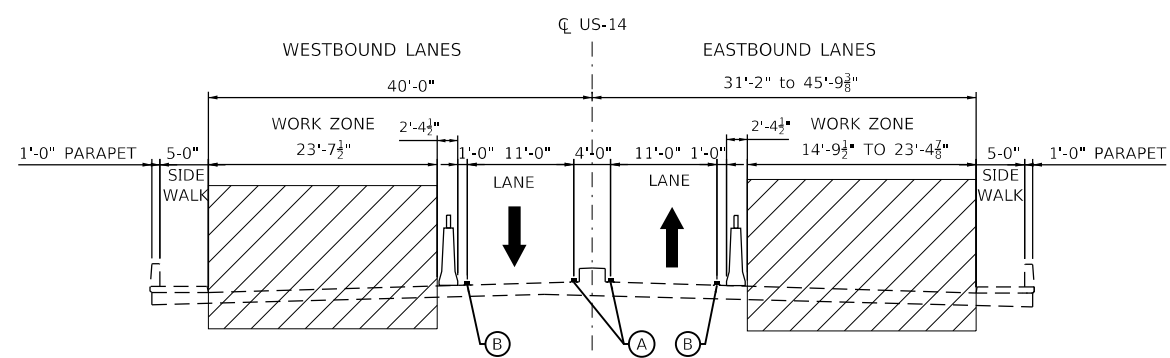
<p>INFRASTRUCTURE ENGINEERING INCORPORATED 1 South Wacker Suite 2650 Chicago, IL 60606 P 312.425.9580 F 312.425.9584 www.infrastructure-eng.com</p>	USER NAME = ALane PLOT SCALE = 240.0000" / ft. PLOT DATE = 12/17/2021	DESIGNED - DRAWN - CHECKED - DATE - 10/15/2021	REVISED - REVISED - REVISED - REVISED -	STATE OF ILLINOIS DEPARTMENT OF TRANSPORTATION	SUMMARY OF QUANTITIES I-94 AT US-14 (PETERSON AVE)	F.A.I. RTE. 94 SECTION 2020-165-BR COUNTY COOK ILLINOIS FED. AID PROJECT	TOTAL SHEETS 46 SHEET NO. 3 CONTRACT NO. 62M51
	SCALE: SHEET OF SHEETS STA. TO STA.						



**US-14 (SN 016-0364) OVER I-94
EXISTING TYPICAL SECTION**


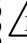






**US-14 (SN 016-0364) OVER I-94
STAGE 1 CONSTRUCTION**



**US-14 (SN 016-0364) OVER I-94
STAGE 2 CONSTRUCTION**

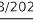
MOT TYPICAL LEGEND

-  TEMPORARY CONCRETE BARRIER W/TYPE C REFLECTORS (SEE STDS: 704001 & 780001) 
-  WORK AREA
-  DIRECTION OF TRAVEL
-  TEMPORARY PAVEMENT MARKINGS - 4" SOLID YELLOW EDGE LINE
-  TEMPORARY PAVEMENT MARKINGS - 4" SOLID YELLOW EDGE LINE

 REVISED SHEET 2/24/2022

MODEL: Default
FILE NAME: P:\2020\20-4094-00 IDOT Various Phase 2 (PTB) 106 Item 16\Work Order 18\IDOT\CADD_Sheets\162M51-1-16-2022.dgn

INFRASTRUCTURE ENGINEERING INCORPORATED
1 South Wacker | Suite 2650 | Chicago, IL 60606
P 312.425.9569 | F 312.425.9568 | www.infrastructure-eng.com

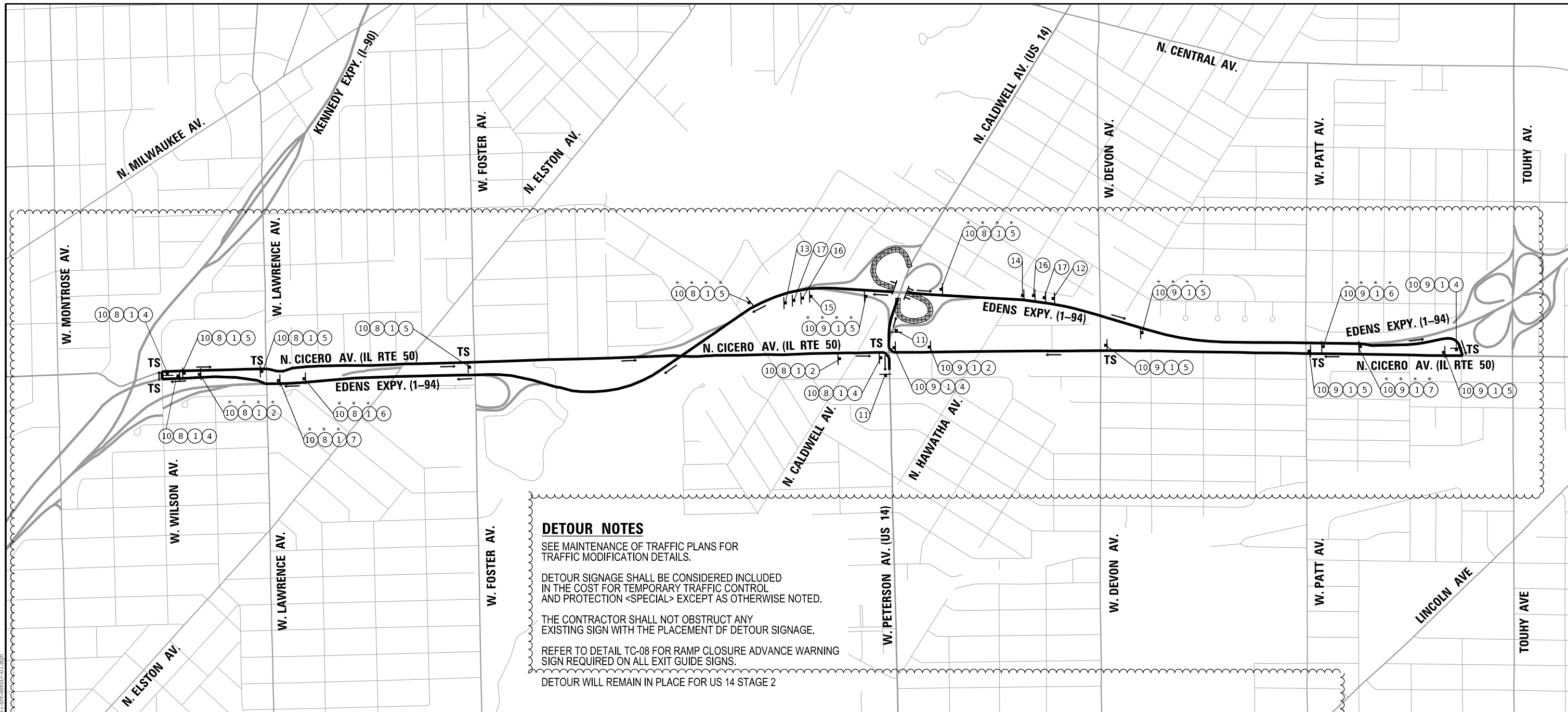
USER NAME = ALane	DESIGNED - MLD	REVISED -  ACL 2/8/2022
PLOT SCALE = 1/2000.0000" / ft.	DRAWN - MLD	REVISED -
PLOT DATE = 2/8/2022	CHECKED - ACL	REVISED -
	DATE - 10/15/2021	REVISED -

**STATE OF ILLINOIS
DEPARTMENT OF TRANSPORTATION**

**TRAFFIC CONTROL PLANS
US-14 TYPICAL SECTIONS**

SCALE: SHEET OF SHEETS STA. TO STA.

F.A.I. RTE.	SECTION	COUNTY	TOTAL SHEETS	SHEET NO.
94	2020-165-BR	COOK	46	5
CONTRACT NO. 62M51				
ILLINOIS FED. AID PROJECT				



DETOUR NOTES

SEE MAINTENANCE OF TRAFFIC PLANS FOR TRAFFIC MODIFICATION DETAILS.

DETOUR SIGNAGE SHALL BE CONSIDERED INCLUDED IN THE COST FOR TEMPORARY TRAFFIC CONTROL AND PROTECTION <SPECIAL> EXCEPT AS OTHERWISE NOTED.

THE CONTRACTOR SHALL NOT OBSTRUCT ANY EXISTING SIGN WITH THE PLACEMENT OF DETOUR SIGNAGE.

REFER TO DETAIL TC-08 FOR RAMP CLOSURE ADVANCE WARNING SIGN REQUIRED ON ALL EXIT GUIDE SIGNS.

DETOUR WILL REMAIN IN PLACE FOR US 14 STAGE 2

* USE ON MAINLINE I-94

DETOUR ROUTE MARKERS



FOR ILLINOIS ROUTES
M1-4-2424
*M1-4-3636

M5-1R-2115	M6-1-2115	M6-1-2115	M6-3-2115 *M6-3-3021	M5-2R-3021
M5-2R-3021	M3-2-2412 *M3-2-3618	M3-4-2412 *M3-4-3618	M4-8-3618	M4-8A-4836

PHASE I RAMP TO EB US 14 CLOSED	PHASE II FOLLOW WB US 14 MARKED DETOUR	PHASE I RAMP TO WB US 14 CLOSED	PHASE II FOLLOW EB US 14 MARKED DETOUR
3 SEC DISPLAY 18" LETTERS		3 SEC DISPLAY 18" LETTERS	
PORTABLE CHANGABLE MESSAGE SIGN		PORTABLE CHANGABLE MESSAGE SIGN	



W20-3(O)-48



W20-3(O)-48



W20-2(O)-48



W20-1103(O)-48

MIN. 8" BLACK LETTERS
ON ORANGE BACKGROUND
36" X 10" (TYP.)

WB RAMP

LEGEND:

- PARTIAL CLOSURE
- DETOUR ROUTE
- TYPE III BARRICADE
- DETOUR / CLOSURE SIGNAGE
- TRAFFIC SIGNALIZED INTERSECTION

REVISED SHEET 2/24/2022

MODEL: D:\draft\... FILE NAME: P:\2020\2020-09-04-00_IDOT_Vehicle Phase 2 (FE) 106 from 161\Work Order 18\IDOT\CADD_Sheets\163\MS-1-1-1-1-1-1-1.dgn

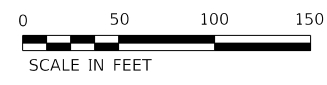
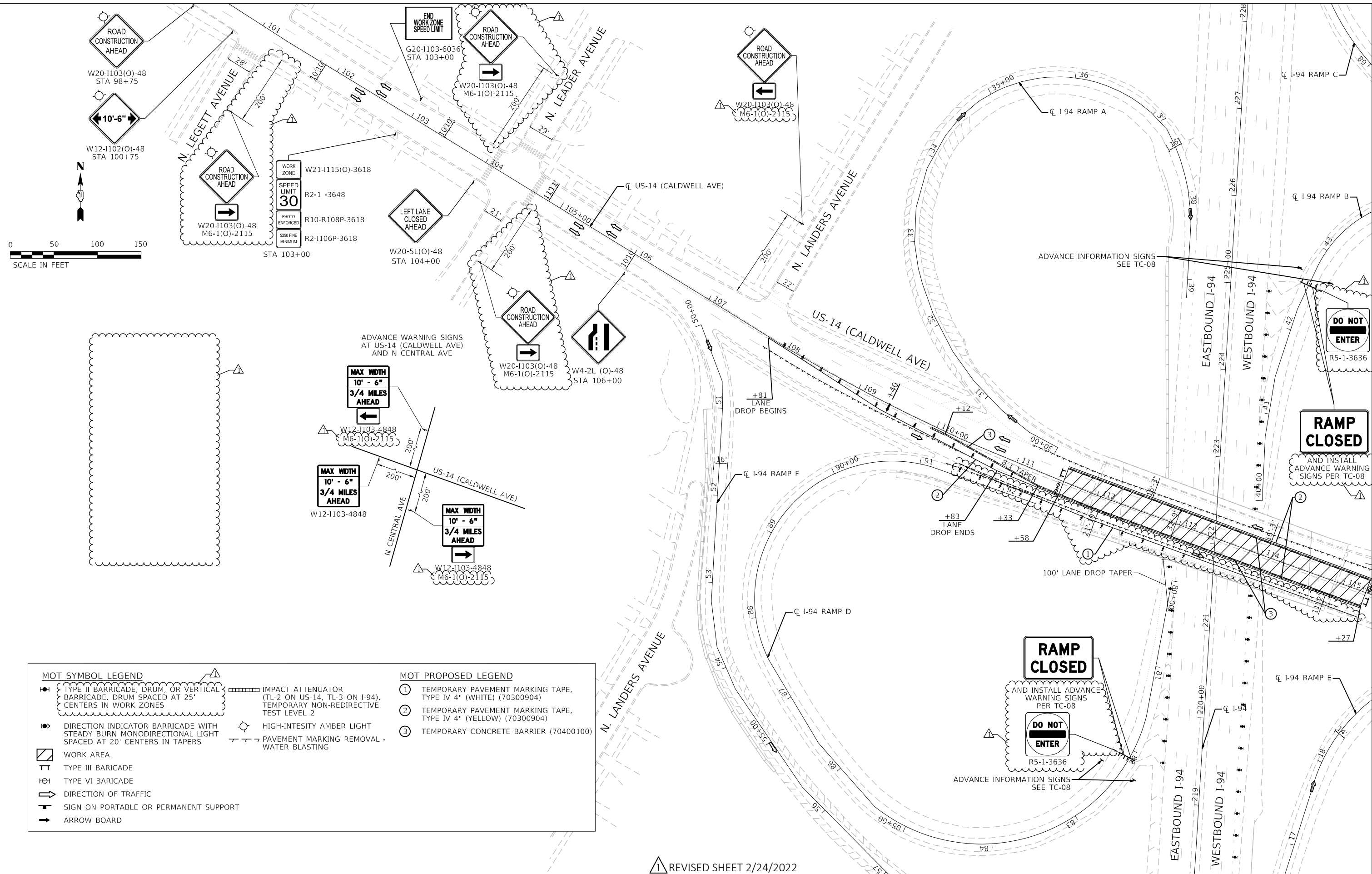
 INFRASTRUCTURE ENGINEERING INCORPORATED 1 South Wacker Suite 2650 Chicago, IL 60606 P 312.425.9569 F 312.425.9544 www.infrastructure-eng.com	USER NAME = alane	DESIGNED - HAS	REVISED - ACL 2/8/2022
	PLOT SCALE = 1/276,6524' / in.	DRAWN - HAS	REVISED -
	PLOT DATE = 2/14/2022	CHECKED - MPK	REVISED -
		DATE - 12/08/2021	REVISED -

**STATE OF ILLINOIS
DEPARTMENT OF TRANSPORTATION**

**RAMP DETOUR PLAN EB & WB I-94 TO EB & WB US 14
STAGE 1 & STAGE 2**

SCALE: SHEET OF SHEETS STA. TO STA.

F.A.I. RTE. 94	SECTION 2020-165-BR	COUNTY COOK	TOTAL SHEETS 46	SHEET NO. 7
ILLINOIS FED. AID PROJECT			CONTRACT NO. 62M51	



MOT SYMBOL LEGEND		MOT PROPOSED LEGEND	
	TYPE II BARRICADE, DRUM, OR VERTICAL BARRICADE, DRUM SPACED AT 25' CENTERS IN WORK ZONES		1 TEMPORARY PAVEMENT MARKING TAPE, TYPE IV 4" (WHITE) (70300904)
	DIRECTION INDICATOR BARRICADE WITH STEADY BURN MONODIRECTIONAL LIGHT SPACED AT 20' CENTERS IN TAPERS		2 TEMPORARY PAVEMENT MARKING TAPE, TYPE IV 4" (YELLOW) (70300904)
	WORK AREA		3 TEMPORARY CONCRETE BARRIER (70400100)
	TYPE III BARRICADE		
	TYPE VI BARRICADE		
	DIRECTION OF TRAFFIC		
	SIGN ON PORTABLE OR PERMANENT SUPPORT		
	ARROW BOARD		
	IMPACT ATTENUATOR (TL-2 ON US-14, TL-3 ON I-94), TEMPORARY NON-REDIRECTIVE TEST LEVEL 2		
	HIGH-INTENSITY AMBER LIGHT		
	PAVEMENT MARKING REMOVAL - WATER BLASTING		

REVISOR: [Symbol] REVISED SHEET 2/24/2022

**STATE OF ILLINOIS
DEPARTMENT OF TRANSPORTATION**

**TRAFFIC CONTROL PLANS
STAGE 1**

 INFRASTRUCTURE ENGINEERING INCORPORATED 1 South Wacker Suite 2650 Chicago, IL 60606 P 312.425.9569 F 312.425.9568 www.infrastructure-eng.com	USER NAME = ALane	DESIGNED - MLD	REVISED - [Symbol] ACL 2/8/2022
	PLOT SCALE = 1/200, 0.589" = 1'	DRAWN - MLD	REVISED -
	PLOT DATE = 2/8/2022	CHECKED - ACL	REVISED -
		DATE - 10/15/2021	REVISED -

SCALE:	SHEET	OF	SHEETS	STA.	TO	STA.

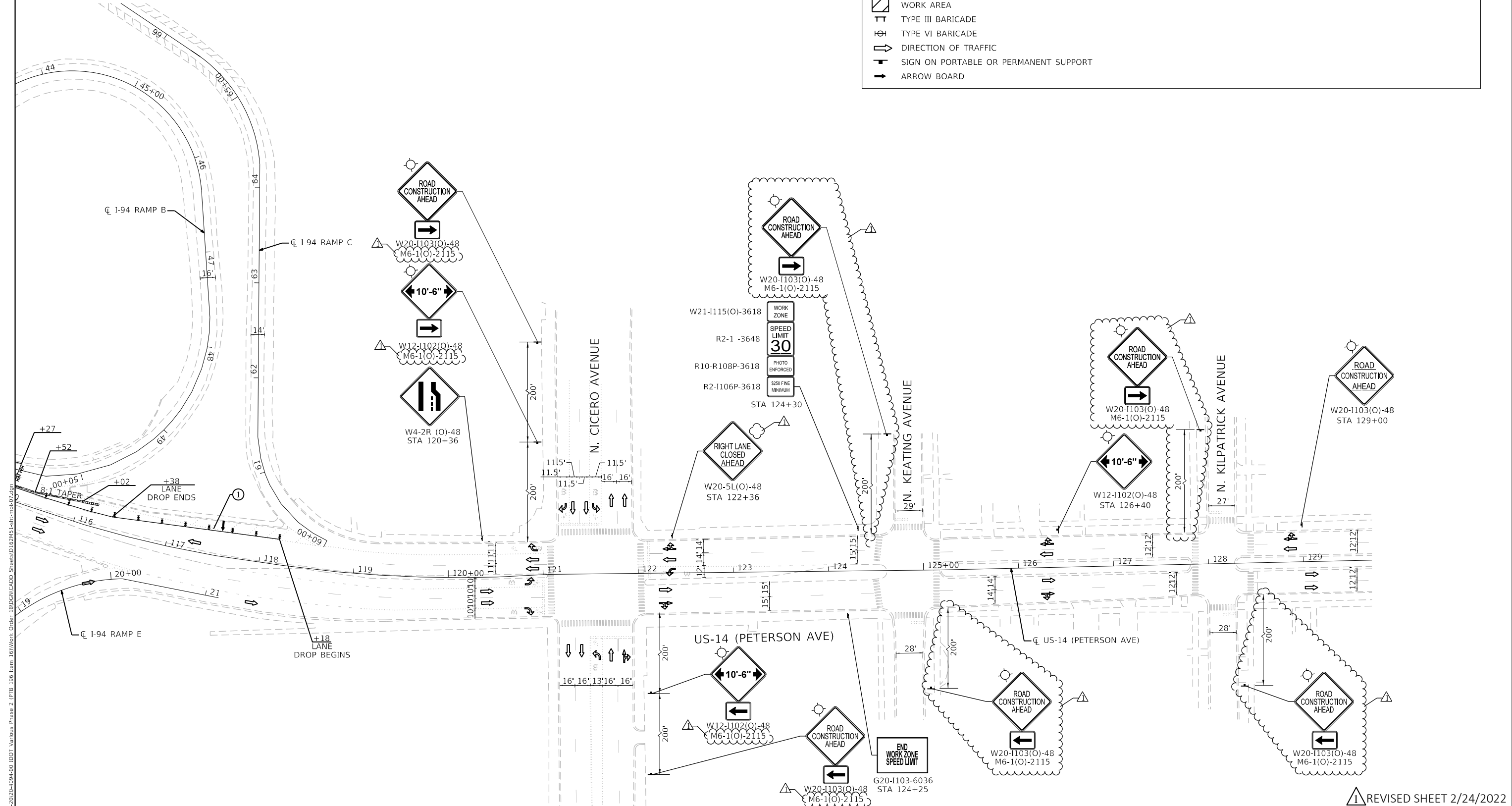
F.A.I. RTE.	SECTION	COUNTY	TOTAL SHEETS	SHEET NO.
94	2020-165-BR	COOK	46	8
ILLINOIS FED. AID PROJECT				

CONTRACT NO. 62M51

MODEL: D:\d\inf\...
 FILE NAME: P:\2020\2020-165-BR\DOT_Various Phase 2 (FTEL 106 from 161)\Work Order 18102\CAADD_Sheets\162M51-LCH-mot-04.dgn



MOT SYMBOL LEGEND		MOT PROPOSED LEGEND	
	TYPE II BARRICADE, DRUM, OR VERTICAL BARRICADE. DRUM SPACED AT 25' CENTERS IN WORK ZONES		IMPACT ATTENUATOR (TL-2 ON US-14, TL-3 ON I-94), TEMPORARY NON-REDIRECTIVE TEST LEVEL 2
	DIRECTION INDICATOR BARRICADE WITH STEADY BURN MONODIRECTIONAL LIGHT SPACED AT 20' CENTERS IN TAPERS		HIGH-INTENSITY AMBER LIGHT
	WORK AREA		PAVEMENT MARKING REMOVAL - WATER BLASTING
	TYPE III BARRICADE		
	TYPE VI BARRICADE		
	DIRECTION OF TRAFFIC		
	SIGN ON PORTABLE OR PERMANENT SUPPORT		
	ARROW BOARD		
	① TEMPORARY PAVEMENT MARKING TAPE, TYPE IV 4" (WHITE) (70300904)		
	② TEMPORARY PAVEMENT MARKING TAPE, TYPE IV 4" (YELLOW) (70300904)		
	③ TEMPORARY CONCRETE BARRIER (70400100)		



MODEL: D:\inf\...
 FILE NAME: P:\2020-09-14-00_IDOT_Various Phase 2 (FTEL_106 Item 16)\Work Order 1802\CAD\CADD_Sheets\1-1811-mot-02.dwg
 DATE: 2/24/2022

REVISED SHEET 2/24/2022

INFRASTRUCTURE ENGINEERING
 1 South Wacker | Suite 2650 | Chicago, IL 60606
 P: 312.425.9569 | F: 312.425.9564 | www.infrastructure-eng.com

USER NAME = ALane	DESIGNED - MLD	REVISED -
PLOT SCALE = 1/200,0589' / ft.	DRAWN - MLD	REVISED -
PLOT DATE = 2/8/2022	CHECKED - ACL	REVISED -
	DATE - 10/15/2021	REVISED -

DESIGNED - MLD	REVISED -
DRAWN - MLD	REVISED -
CHECKED - ACL	REVISED -
DATE - 10/15/2021	REVISED -

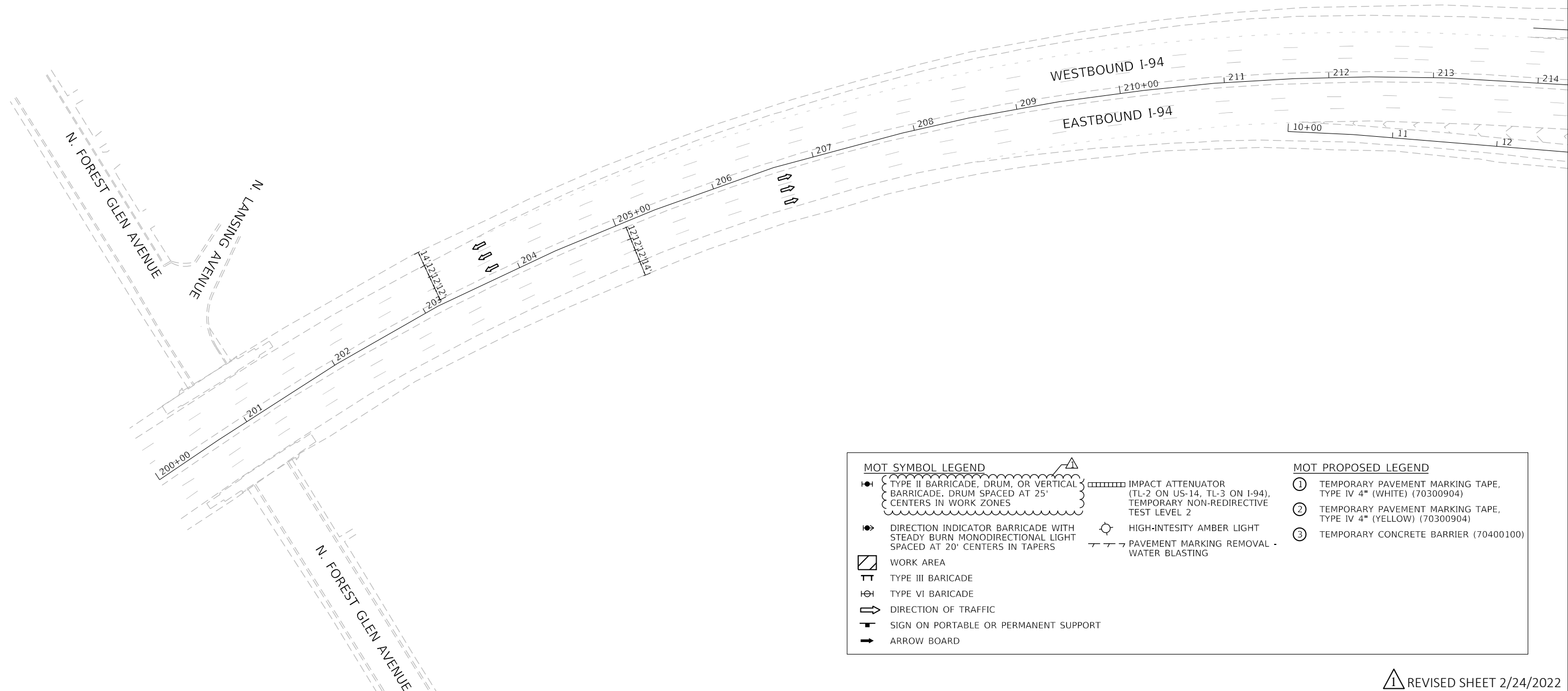
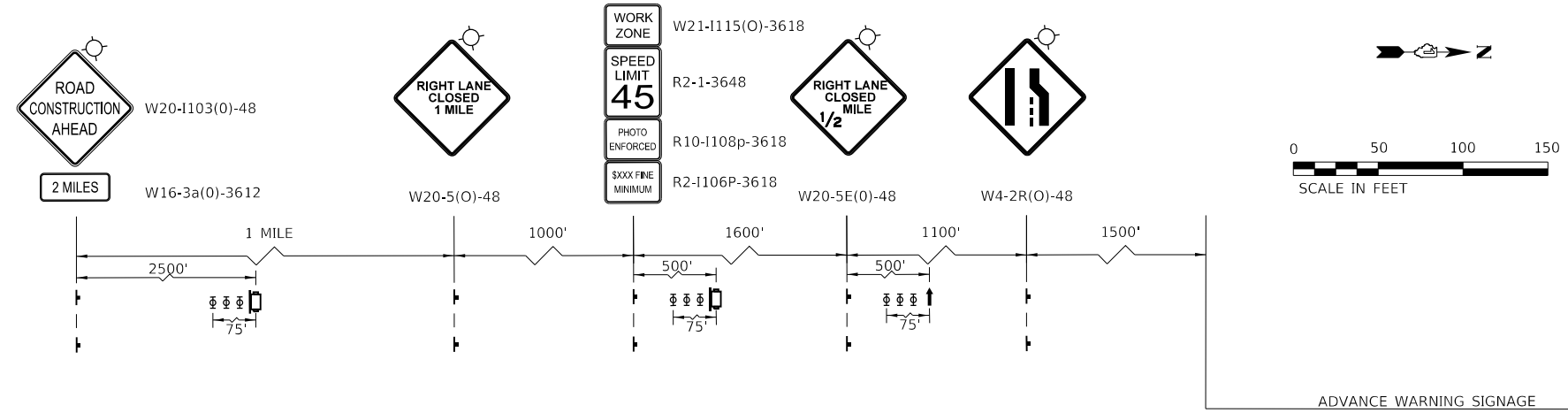
STATE OF ILLINOIS
DEPARTMENT OF TRANSPORTATION

TRAFFIC CONTROL PLANS

STAGE 2

SCALE:	SHEET	OF	SHEETS	STA.	TO	STA.
--------	-------	----	--------	------	----	------

F.A.I. RTE.	SECTION	COUNTY	TOTAL SHEETS	SHEET NO.
94	2020-165-BR	COOK	46	11
CONTRACT NO. 62M51				
ILLINOIS FED. AID PROJECT				



MOT SYMBOL LEGEND		MOT PROPOSED LEGEND	
	TYPE II BARRICADE, DRUM, OR VERTICAL BARRICADE. DRUM SPACED AT 25' CENTERS IN WORK ZONES		IMPACT ATTENUATOR (TL-2 ON US-14, TL-3 ON I-94), TEMPORARY NON-REDIRECTIVE TEST LEVEL 2
	DIRECTION INDICATOR BARRICADE WITH STEADY BURN MONODIRECTIONAL LIGHT SPACED AT 20' CENTERS IN TAPERS		HIGH-INTENSITY AMBER LIGHT
	WORK AREA		PAVEMENT MARKING REMOVAL - WATER BLASTING
	TYPE III BARICADE		① TEMPORARY PAVEMENT MARKING TAPE, TYPE IV 4" (WHITE) (70300904)
	TYPE VI BARICADE		② TEMPORARY PAVEMENT MARKING TAPE, TYPE IV 4" (YELLOW) (70300904)
	DIRECTION OF TRAFFIC		③ TEMPORARY CONCRETE BARRIER (70400100)
	SIGN ON PORTABLE OR PERMANENT SUPPORT		
	ARROW BOARD		

MODEL: D:\proj\1611000\1611000-001\1611000-001-001\1611000-001-001-001\1611000-001-001-001\1611000-001-001-001.dgn
 FILE NAME: P:\proj\1611000\1611000-001\1611000-001-001\1611000-001-001-001\1611000-001-001-001.dgn

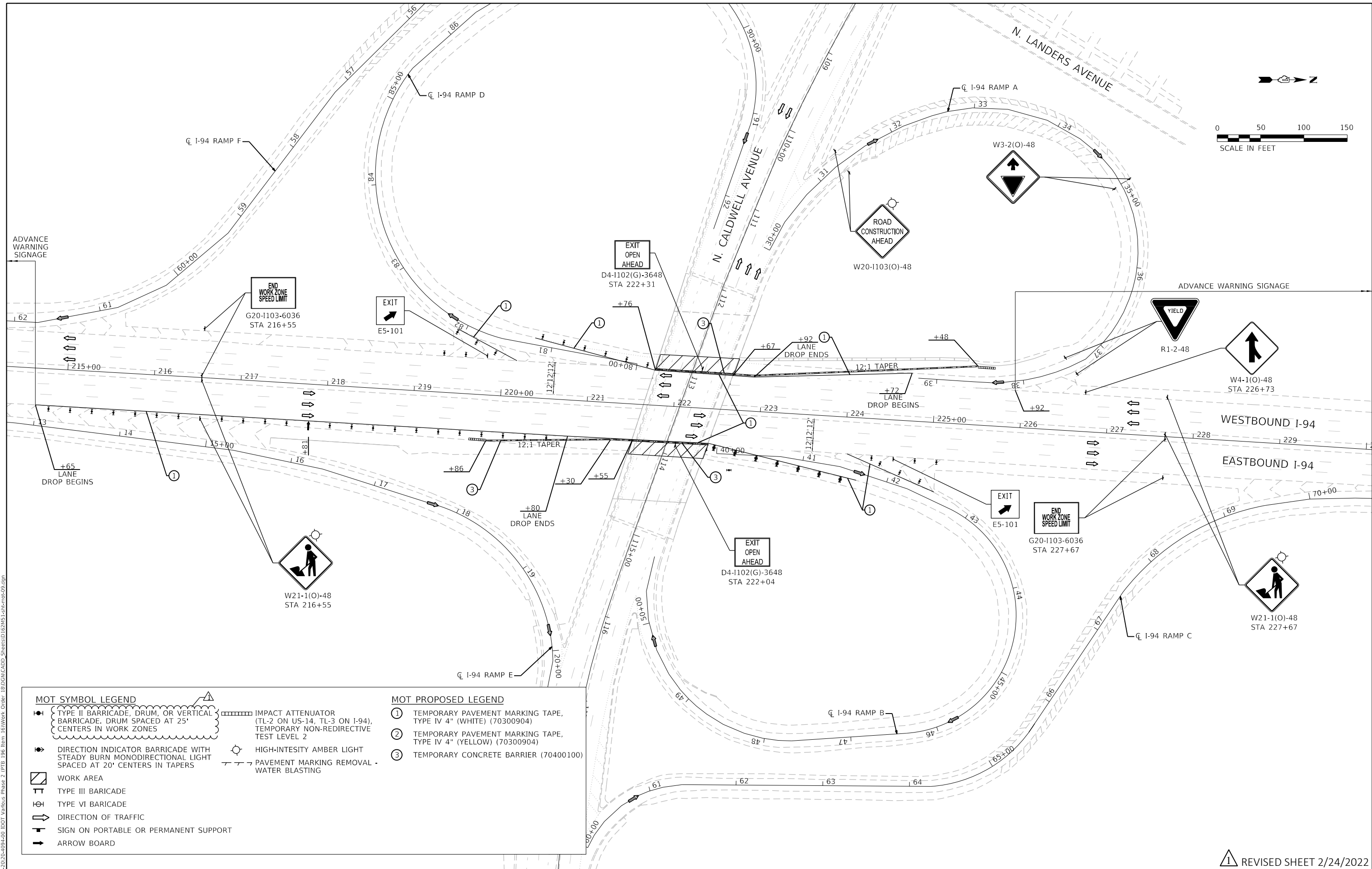
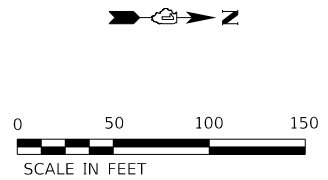
INFRASTRUCTURE ENGINEERING 1 South Wacker Suite 2650 Chicago, IL 60606 P 312.425.9588 F 312.425.9594 www.infrastructure-eng.com	USER NAME = ALane	DESIGNED - MLD	REVISED - ACL 2/8/2022
	PLOT SCALE = 1/200,0000 ' / ft.	DRAWN - MLD	REVISED -
	PLOT DATE = 2/8/2022	CHECKED - ACL	REVISED -
		DATE - 10/15/2021	REVISED -

**STATE OF ILLINOIS
DEPARTMENT OF TRANSPORTATION**

TRAFFIC CONTROL PLANS I-94 STAGE I (NIGHTTIME)			
SCALE:	SHEET	OF SHEETS	STA. TO STA.

F.A.I. RTE.	SECTION	COUNTY	TOTAL SHEETS	SHEET NO.
94	2020-165-BR	COOK	46	12
CONTRACT NO. 62M51				
ILLINOIS FED. AID PROJECT				

REVISED SHEET 2/24/2022



MOT SYMBOL LEGEND

	TYPE II BARRICADE, DRUM, OR VERTICAL BARRICADE. DRUM SPACED AT 25' CENTERS IN WORK ZONES
	DIRECTION INDICATOR BARRICADE WITH STEADY BURN MONODIRECTIONAL LIGHT SPACED AT 20' CENTERS IN TAPERS
	WORK AREA
	TYPE III BARRICADE
	TYPE VI BARRICADE
	DIRECTION OF TRAFFIC
	SIGN ON PORTABLE OR PERMANENT SUPPORT
	ARROW BOARD

MOT PROPOSED LEGEND

	TEMPORARY PAVEMENT MARKING TAPE, TYPE IV 4" (WHITE) (70300904)
	TEMPORARY PAVEMENT MARKING TAPE, TYPE IV 4" (YELLOW) (70300904)
	TEMPORARY CONCRETE BARRIER (70400100)
	IMPACT ATTENUATOR (TL-2 ON US-14, TL-3 ON I-94), TEMPORARY NON-REDIRECTIVE TEST LEVEL 2
	HIGH-INTENSITY AMBER LIGHT
	PAVEMENT MARKING REMOVAL - WATER BLASTING



USER NAME = ALane	DESIGNED - MLD	REVISED - ACL 2/8/2022
DRAWN - MLD	REVISIONS	
CHECKED - ACL	REVISIONS	
DATE - 10/15/2021	REVISIONS	

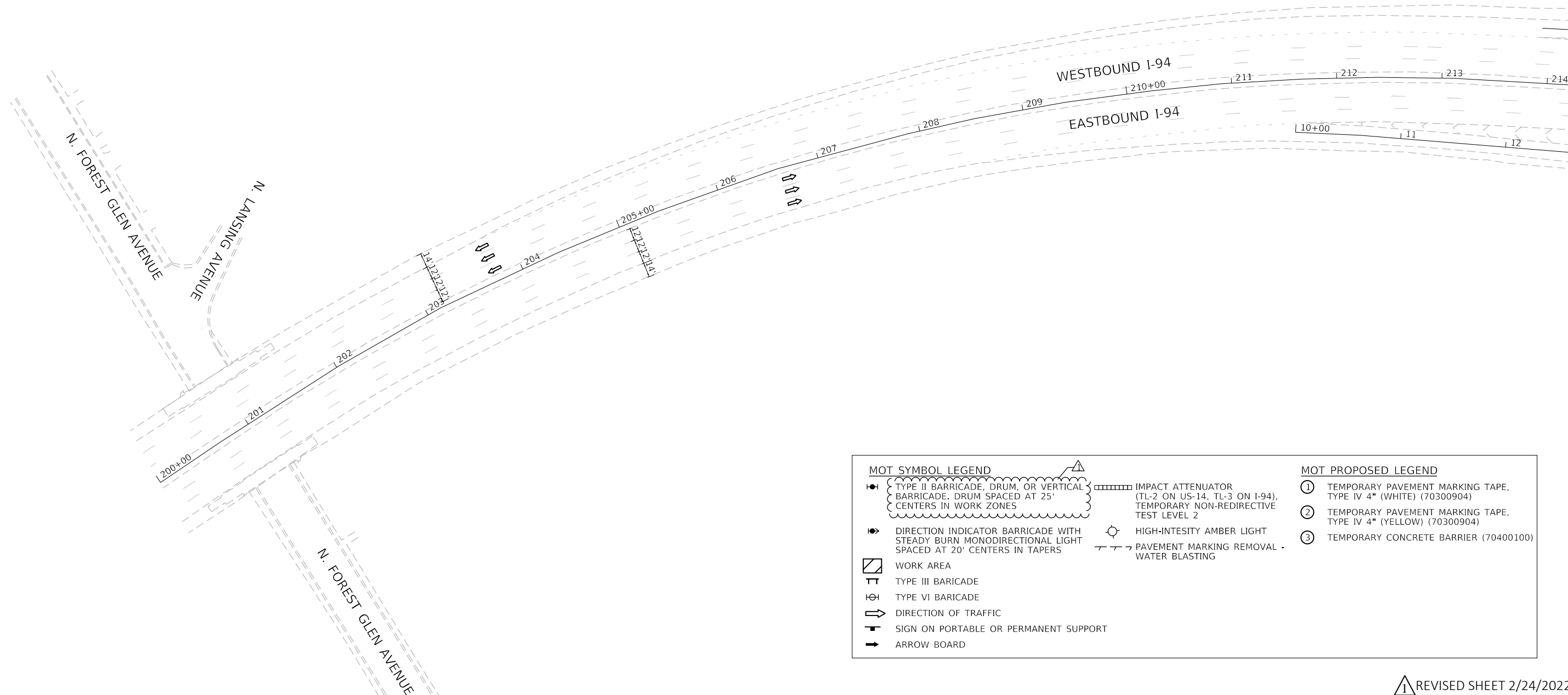
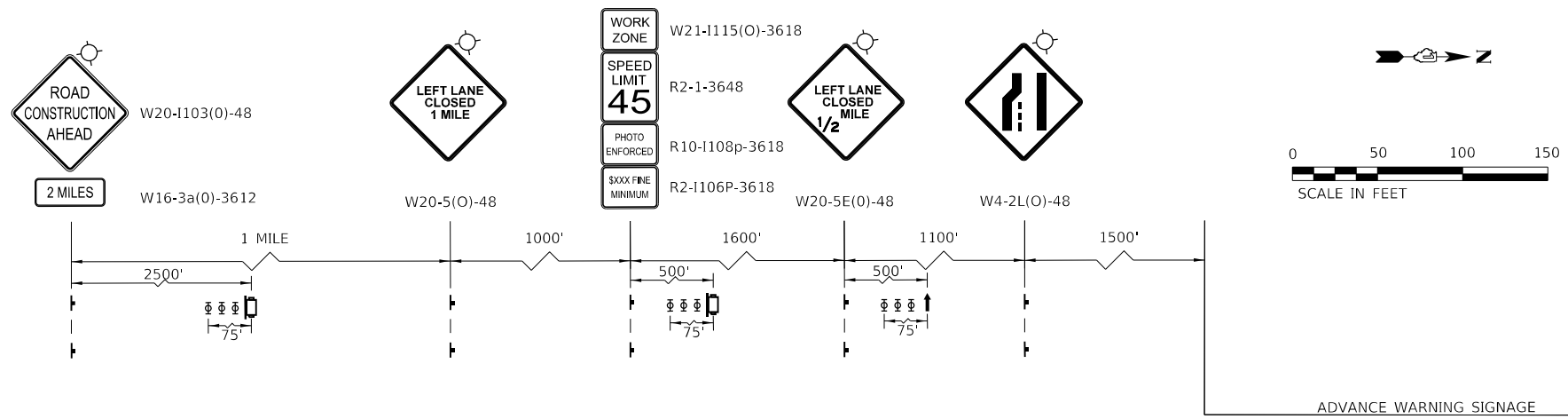
**STATE OF ILLINOIS
DEPARTMENT OF TRANSPORTATION**

TRAFFIC CONTROL PLANS I-94 STAGE I (NIGHTTIME)	
SCALE:	SHEET OF SHEETS STA. TO STA.

F.A.I. RTE.	SECTION	COUNTY	TOTAL SHEETS	SHEET NO.
94	2020-165-BR	COOK	46	13
CONTRACT NO. 62M51				
ILLINOIS FED. AID PROJECT				

REVISED SHEET 2/24/2022

MODEL: D:\p\11... INFRASTRUCTURE ENGINEERING INCORPORATED 1 South Wacker | Suite 2650 | Chicago, IL 60606 P 312.425.9569 | F 312.425.9568 | www.infrastructure-eng.com



MOT SYMBOL LEGEND		MOT PROPOSED LEGEND	
	TYPE II BARRICADE, DRUM, OR VERTICAL BARRICADE. DRUM SPACED AT 25' CENTERS IN WORK ZONES		IMPACT ATTENUATOR (TL-2 ON US-14, TL-3 ON I-94), TEMPORARY NON-REDIRECTIVE TEST LEVEL 2
	DIRECTION INDICATOR BARRICADE WITH STEADY BURN MONODIRECTIONAL LIGHT SPACED AT 20' CENTERS IN TAPERS		HIGH-INTENSITY AMBER LIGHT
	WORK AREA		PAVEMENT MARKING REMOVAL - WATER BLASTING
	TYPE III BARRICADE		TEMPORARY PAVEMENT MARKING TAPE, TYPE IV 4" (WHITE) (70300904)
	TYPE VI BARRICADE		TEMPORARY PAVEMENT MARKING TAPE, TYPE IV 4" (YELLOW) (70300904)
	DIRECTION OF TRAFFIC		TEMPORARY CONCRETE BARRIER (70400100)
	SIGN ON PORTABLE OR PERMANENT SUPPORT		
	ARROW BOARD		

MODEL: D:\p\11...
 FILE NAME: P:\2020-2024-09-14-00 IDOT Various Phase 2 (FBI_106 Item 16)\Work Order 18\DOT\CADD_Sheets\162M51-1-1-1.dgn

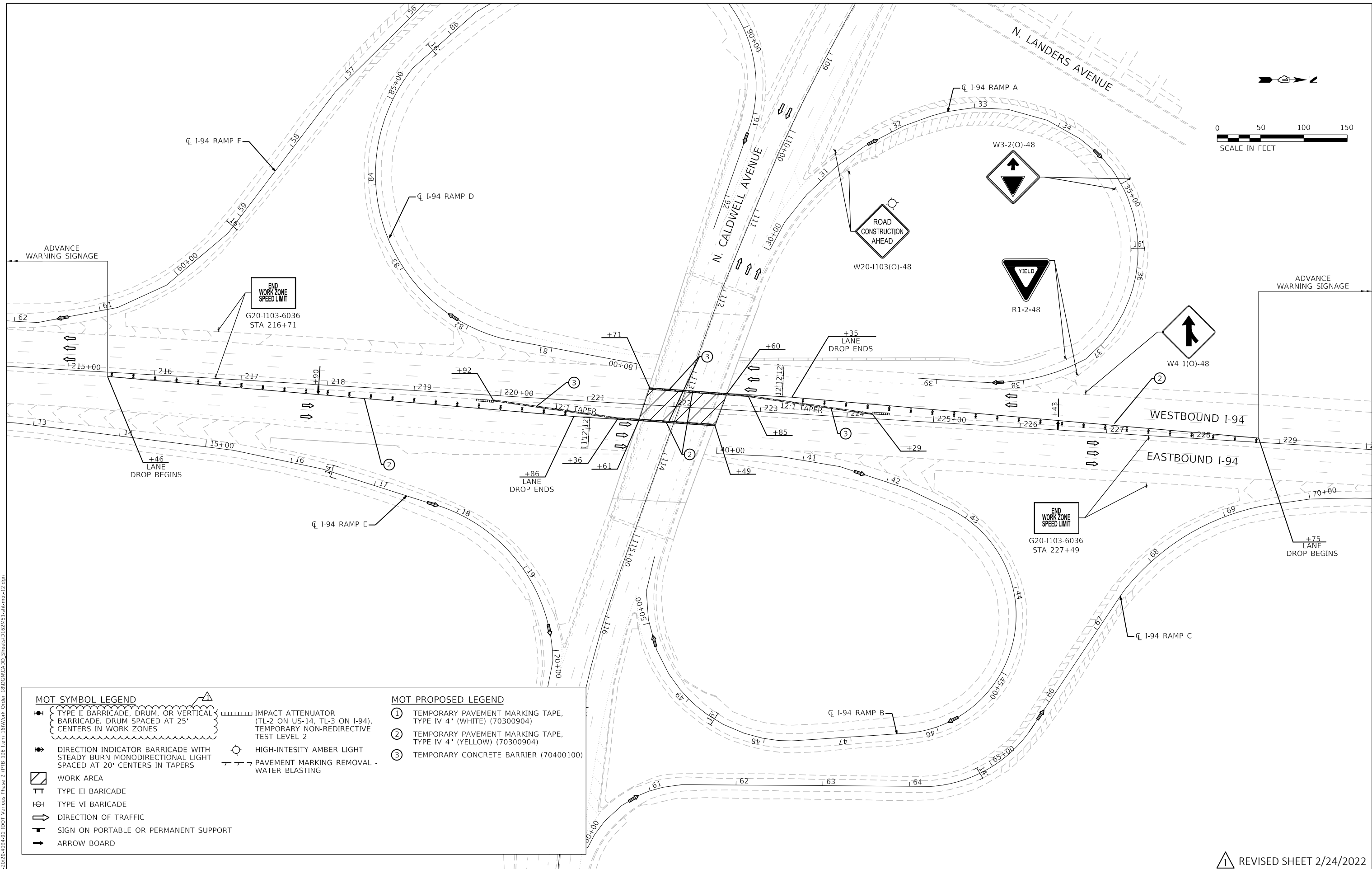
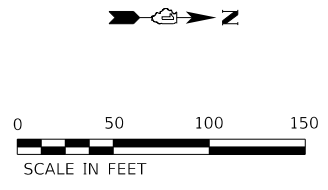
 INFRASTRUCTURE ENGINEERING 1 South Wacker Suite 2650 Chicago, IL 60606 P 312.425.9568 F 312.425.9564 www.infrastructure-eng.com	USER NAME = ALane	DESIGNED - MLD	REVISED - ACL 2/8/2022
	PLOT SCALE = 1/200,0000' / ft.	DRAWN - MLD	REVISED -
	PLOT DATE = 2/8/2022	CHECKED - ACL	REVISED -
		DATE - 10/15/2021	REVISED -

STATE OF ILLINOIS
DEPARTMENT OF TRANSPORTATION

TRAFFIC CONTROL PLANS			
I-94 STAGE II (NIGHTTIME)			
SCALE:	SHEET	OF SHEETS	STA. TO STA.

F.A.I. RTE.	SECTION	COUNTY	TOTAL SHEETS	SHEET NO.
94	2020-165-BR	COOK	46	15
CONTRACT NO. 62M51				
ILLINOIS FED. AID PROJECT				

REVISED SHEET 2/24/2022



MOT SYMBOL LEGEND

	TYPE II BARRICADE, DRUM, OR VERTICAL BARRICADE. DRUM SPACED AT 25' CENTERS IN WORK ZONES
	DIRECTION INDICATOR BARRICADE WITH STEADY BURN MONODIRECTIONAL LIGHT SPACED AT 20' CENTERS IN TAPERS
	WORK AREA
	TYPE III BARRICADE
	TYPE VI BARRICADE
	DIRECTION OF TRAFFIC
	SIGN ON PORTABLE OR PERMANENT SUPPORT
	ARROW BOARD

MOT PROPOSED LEGEND

	TEMPORARY PAVEMENT MARKING TAPE, TYPE IV 4" (WHITE) (70300904)
	TEMPORARY PAVEMENT MARKING TAPE, TYPE IV 4" (YELLOW) (70300904)
	TEMPORARY CONCRETE BARRIER (70400100)
	IMPACT ATTENUATOR (TL-2 ON US-14, TL-3 ON I-94), TEMPORARY NON-REDIRECTIVE TEST LEVEL 2
	HIGH-INTENSITY AMBER LIGHT
	PAVEMENT MARKING REMOVAL - WATER BLASTING

MODEL: D:\dgn\11\11\2020\2020-09-14-00_IDOT_Various_Phase_2.dgn
 FILE NAME: P:\2020\2020-09-14-00_IDOT_Various_Phase_2.dgn
 ORDER: 18102020-09-14-00_IDOT_Various_Phase_2.dgn
 SHEET: 2/24/2022

 INFRASTRUCTURE ENGINEERING INCORPORATED 1 South Wacker Suite 2650 Chicago, IL 60606 P 312.425.9569 F 312.425.9568 www.infrastructure-eng.com	USER NAME = ALane	DESIGNED - MLD	REVISED - ACL 2/8/2022
	PLOT SCALE = 1/200,0000' / ft.	DRAWN - MLD	REVISED -
	PLOT DATE = 2/8/2022	CHECKED - ACL	REVISED -
		DATE - 10/15/2021	REVISED -

STATE OF ILLINOIS
DEPARTMENT OF TRANSPORTATION

TRAFFIC CONTROL PLANS
I-94 STAGE II (NIGHTTIME)

SCALE:	SHEET	OF	SHEETS	STA.	TO	STA.
--------	-------	----	--------	------	----	------

F.A.I. RTE.	SECTION	COUNTY	TOTAL SHEETS	SHEET NO.
94	2020-165-BR	COOK	46	16
CONTRACT NO. 62M51				
ILLINOIS FED. AID PROJECT				

REVISED SHEET 2/24/2022

