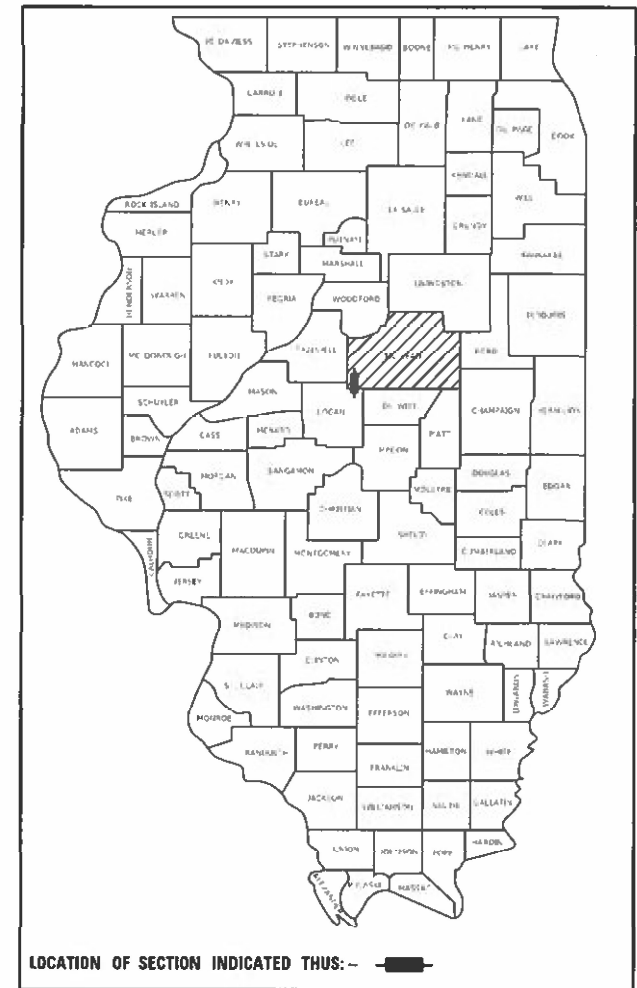


STATE OF ILLINOIS
DEPARTMENT OF TRANSPORTATION

F.A.I. RTE.	SECTION	COUNTY	TOTAL SHEETS	SHEET NO.
55	(57-10HB)BR	MCLEAN	19	1
		ILLINOIS	CONTRACT NO. 70F57	

D-95-003-22



PROPOSED HIGHWAY PLANS

F.A.I. ROUTE 55 (I-55)
SECTION (57-10HB)BR
PROJECT
BRIDGE DECK OVERLAY
MCLEAN COUNTY

C-95-020-22

FOR INDEX OF SHEETS, SEE SHEET NO. 2

F.A.I. 55 SOUTHBOUND

**CURRENT TRAFFIC DATA
STR. 057-0154 SB**

2021 ADT = 11,500
2041 ADT = 12,700
PU+PC % = 65.9
SU % = 2.8
MU% = 31.3

DESIGN DESIGNATION
INTERSTATE

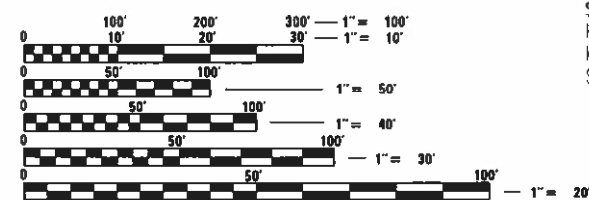
F.A.P. 315 (US 136)

**CURRENT TRAFFIC DATA
UNDER STR. 057-0154**

2021 ADT = 4,900
2041 ADT = 5,400
PU+PC % = 70.4
SU % = 13.3
MU% = 16.3

DESIGN DESIGNATION
OTHER PRINCIPAL ARTERIAL

PROPOSED STRUCTURE REPAIRS
S.N. 057-0154
F.A.I. 55 OVER U.S. 136
MCLEAN INTERCHANGE
STATION 753+54.41



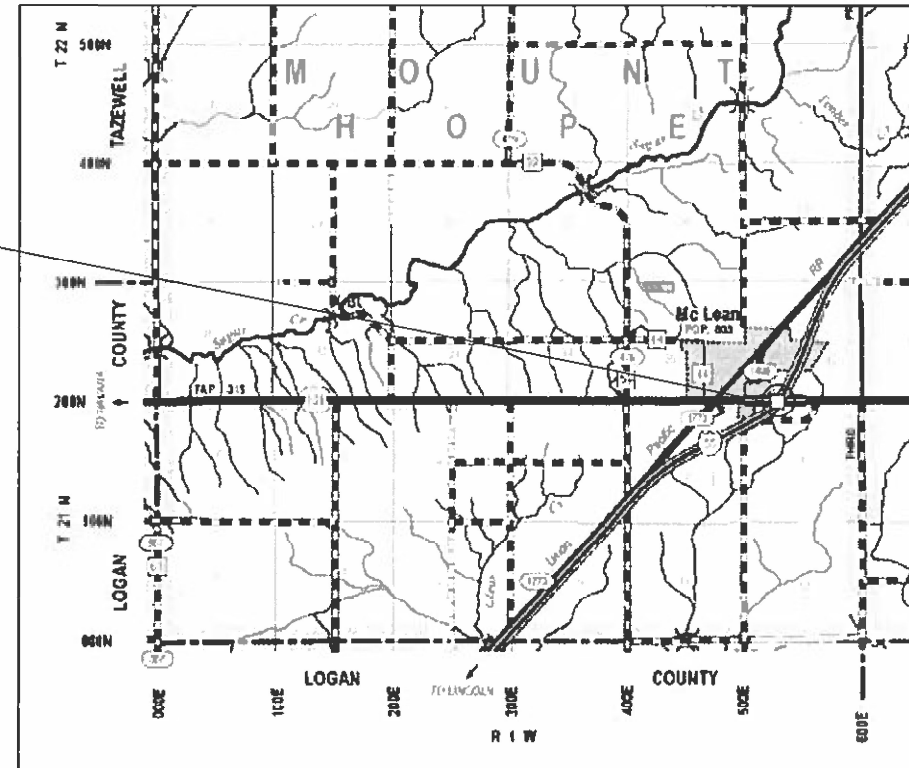
FULL SIZE PLANS HAVE BEEN PREPARED USING STANDARD ENGINEERING SCALES. REDUCED SIZED PLANS WILL NOT CONFORM TO STANDARD SCALES. IN MAKING MEASUREMENTS ON REDUCED PLANS, THE ABOVE SCALES MAY BE USED.

J.U.L.I.E.
JOINT UTILITY LOCATION INFORMATION FOR EXCAVATORS
1-800-892-0123
OR 811

TOWNSHIP: MOUNT HOPE

PROJECT ENGINEER TIM BRANDENBURG
PROJECT MANAGER ERIC SHAWLER

CONTRACT NO. 70F57



GROSS LENGTH = 610.00 FT. = 0.015 MILE
NET LENGTH = 610.00 FT. = 0.015 MILE

STATE OF ILLINOIS
DEPARTMENT OF TRANSPORTATION

SUBMITTED 11/16 2021
Kennel A. Barnett
REGIONAL ENGINEER

February 4 2022
[Signature]
ENGINEER OF DESIGN AND ENVIRONMENT

February 4 2022
Stephen M. Smith
DIRECTOR OF HIGHWAYS PROJECT IMPLEMENTATION

**PRINTED BY THE AUTHORITY
OF THE STATE OF ILLINOIS**

INDEX OF SHEETS

SHEET NO.	ITEM
1	COVER SHEET
2	INDEX OF SHEETS
2	LIST OF STANDARDS
2	GENERAL NOTES
3-4	SUMMARY OF QUANTITIES
5-14	STRUCTURE PLANS S.N. 057-0154
15	STRIPING DETAIL
16	STAGE CONSTRUCTION DETAILS
17	TEMPORARY RUMBLE STRIPS
18	DETAILS FOR WIDTH RESTRICTION SIGNING
19	PAVEMENT MARKINGS (INTERSTATE & MULTI-LANE APPLICIONS)

LIST OF HIGHWAY STANDARDS

STANDARD NO.	DESCRIPTION
000001-08	STANDARD SYMBOLS, ABBREVIATIONS AND PATTERNS
001001-02	AREAS OF REINFORCEMENT BARS
001006	DECIMAL OF AN INCH AND FOOT
701006-05	OFF ROAD OPERATIONS, 2L,2W, 15' TO 24" FROM EDGE OF PAVEMENT
701101-05	OFF ROAD OPERATIONS, MULTILANE, 15' TO 24" FROM EDGE OF PAVEMENT
701400-11	APPROACH TO LANE CLOSURE, FREEWAY / EXPRESSWAY
701401-13	LANE CLOSURE, FREEWAY / EXPRESSWAY
701402-12	LANE CLOSURE, FREEWAY / EXPRESSWAY WITH BARRIER
701411-09	LANE CLOSURE, MULTILANE, AT ENTRANCE OR EXIT RAMP FOR SPEEDS > 45MPH
701426-09	LANE CLOSURE, MULTILANE, INTERMITTENT, OR MOVING OPER. FOR SPEEDS > 45MPH
701601-09	URBAN LANE CLOSURE, MULTILANE, 1W OR 2W, WITH NONTRASVERSABLE MEDIAN
701901-08	TRAFFIC CONTROL DEVICES
704001-08	TEMPORARY CONCRETE BARRIER
D5 7800BBBB	PAVEMENT MARKINGS (INTERSTATE & MULTI-LANE APPLICIONS)

GENERAL NOTES

G.N.-100

ENGLISH UNITS OF MEASUREMENT SHALL GOVERN OVER AND SUPERSEDE ANY METRIC UNITS SHOWN IN THIS CONTRACT. WHERE INCLUDED, METRIC UNITS ARE FOR INFORMATION ONLY.

G.N.-105.09A

ALL ELEVATIONS SHOWN IN THE PLANS ARE BASED ON NORTH AMERICAN VERTICAL DATUM OF 1988. (NAVD 88)

G.N.-406H

MIXTURE REQUIREMENTS CONTRACT 70F57

THE FOLLOWING MIXTURE REQUIREMENTS ARE APPLICABLE FOR THIS PROJECT:

Location	I-55
Mixture Use	Surface
AC/PG	SBS PG 70-22
Design Air Voids	4.0% @ Ndes=90
Mix Comp(Gradation)	IL 9.5
Friction Aggregate	Mix D
Mixture Weight	112
Quality Management Program	QC/QA
Sublot Size	N.A.
Material Transfer Device (Required?)	No

SEE R.E. FILE FOR CALCULATIONS AND SCHEDULES.

THERE ARE NO COMMITMENTS ASSOCIATED WITH THIS PROJECT.

**STATE OF ILLINOIS
DEPARTMENT OF TRANSPORTATION**

**INDEX OF SHEETS, STANDARDS, GENERAL NOTES
S.N. 057-0154**

SCALE: SHEET 1 OF 1 SHEETS STA. TO STA.

F.A.I. RTE.	SECTION	COUNTY	TOTAL SHEETS	SHEET NO.
55	(57-10H)BR	MCLEAN	19	2
CONTRACT NO. 70F57			ILLINOIS FED. AID PROJECT	

MCLEAN CO.
FAI 55 (II-55)
INTERSTATE
BRIDGE DECK REPAIR
S.N. 057-0154
100% STATE
0059

CODE NO.	ITEM	UNIT	QUANTITY
70600250	IMPACT ATTENUATORS, TEMPORARY (NON- REDIRECTIVE), TEST LEVEL 3	EACH	1.0
70600350	IMPACT ATTENUATORS, RELOCATE (NON- REDIRECTIVE), TEST LEVEL 3	EACH	1.0
* 78008330	POLYUREA PAVEMENT MARKING TYPE II - LINE 6"	FOOT	1,380.0
* 78011035	GROOVING FOR RECESSED PAVEMENT MARKING 7"	FOOT	1,380.0
X2700001	TEMPORARY RUMBLE STRIPS (SPECIAL)	EACH	8.0
X7200201	WIDTH RESTRICTION SIGNING	L SUM	1.0
Z0001800	APPROACH SLAB REPAIR (PARTIAL DEPTH)	SQ YD	16.1
Z0004560	BRIDGE WEARING SURFACE REMOVAL	SQ YD	1,207.8
Z0016001	DECK SLAB REPAIR (FULL DEPTH, TYPE I)	SQ YD	3.6
Z0016002	DECK SLAB REPAIR (FULL DEPTH, TYPE II)	SQ YD	93.2
Z0016200	DECK SLAB REPAIR (PARTIAL)	SQ YD	12.1
Z0021908	SILICONE JOINT SEALER, 2"	FOOT	106.0
Z0041895	POLYMER CONCRETE	CU FT	12.5

* SPECIALTY ITEM

MODEL: I:\MODEL\MAME
FILE: MAME_Plan\IUCR\paw_bentley.com\FW\DOT\Documents\DOT_Offices\Dir\dir: S:\Project\057057\CAD\data\CAD\sheet\057057.dwg

USER NAME = shawleres	DESIGNED -	REVISED -
	DRAWN -	REVISED -
PLOT SCALE = 40,0000 * / in.	CHECKED -	REVISED -
PLOT DATE = 12/16/2021	DATE -	REVISED -

STATE OF ILLINOIS
DEPARTMENT OF TRANSPORTATION

SUMMARY OF QUANTITIES
S.N. 057-0154

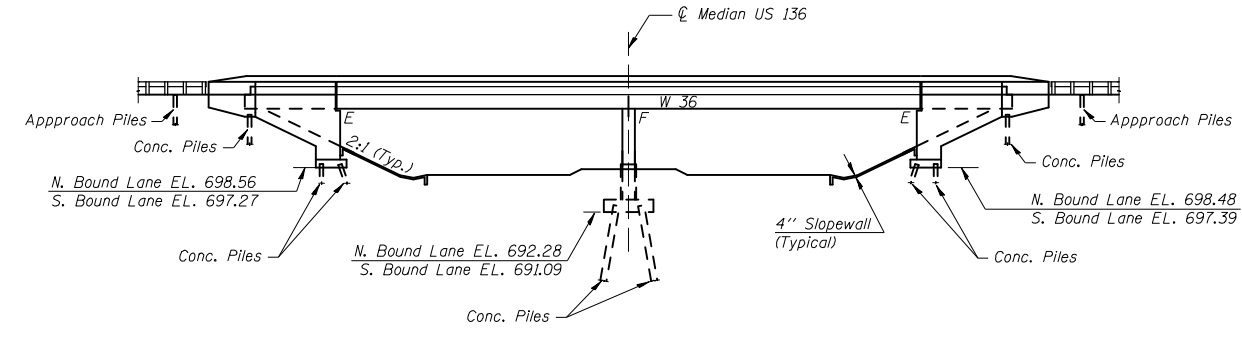
SCALE: SHEET 2 OF 2 SHEETS STA. TO STA.

F.A.I. RTE.	SECTION	COUNTY	TOTAL SHEETS	SHEET NO.
55	(57-10HB)BR	MCLEAN	19	4
			CONTRACT NO. 70F57	
		ILLINOIS FED. AID PROJECT		

S.N. 057-0155 (Northbound Lanes)
 Benchmark No. 1. Top of Existing Pavement at
 Left Edge of NB Lane (P.G. Line) at Sta. 752+82.00
 at Bk. of South Appr. Bent of S.N. 057-0155. Assumed
 Elev. = 717.15 = Plan Elev.

S.N. 057-0154 (Southbound Lanes)
 Benchmark No. 2. Top of Existing Pavement at
 Left Edge of SB Lane (P.G. Line) at Sta. 754+25.06
 at Bk. of North Appr. Bent of S.N. 057-0154. Assumed
 Elev. = 717.14 = Plan Elev.

Existing Structure
 Two span continuous structure with steel beams. PPC I-beams on vaulted
 abutments and reinforced column concrete piers. S.N. 057-0154 & S.N. 057-0155.
 The rehabilitation work is done by utilizing staged construction.



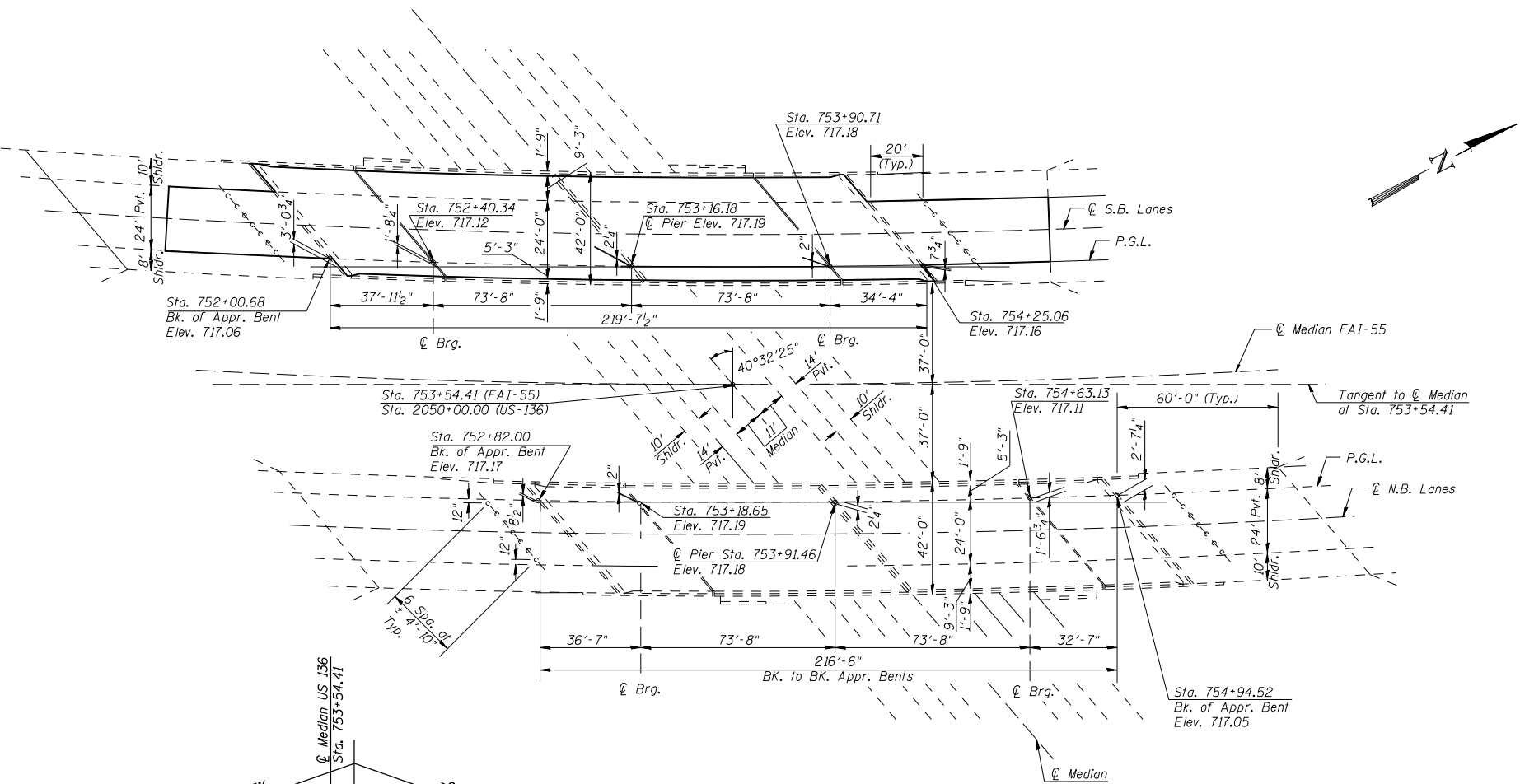
ELEVATION

DESIGN STRESSES & LOADING (ORIGINAL CONST.)

Live Load HS20-44 & Alt. (1969 AASHTO Specification)
 Dead Load included additional 25 psf for future wearing surface.
 $f_c=1,400$ psi (Substructure & (GM) Parapet)
 $f_c=1,200$ psi (Superstructure)
 $V_c=75$ psi (Footings)
 $f_s=20,000$ psi (Reinforced Bars Field)
 $f_s=20,000$ psi (Structural Steel A-36)
 $n=10$
 $f'_c=5,000$ psi (Prestressed Beams)
 $f'_c=4,000$ psi (Prestressed Beams)
 $f'_s=248,000$ psi (Prestressed Strands)
 $f'_s=173,600$ psi (Prestressed Strands)

NEW CONSTRUCTION

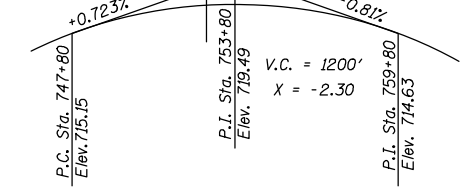
DESIGN SPECIFICATIONS
 1996 AASHTO, with 1997 and 1998 interim specification.
 LOADING HS 20-44 & Alt.
 Allow 25#/sq.ft for future wearing surface
 DESIGN STRESSES
 $f_c=1,400$ psi (Concrete)
 $f_s=24,000$ psi (Reinforcement bars)
 $f_s=20,000$ psi (Structural Steel)



PLAN

HORIZONTAL CURVE DATA
 FAI ROUTE 55

P.I. STA. 752+80.19
 $\Delta = 40^\circ 33' 58''$
 $D = 1^\circ 30'$
 $R = 3,819.72'$
 $T = 1,411.67'$
 $L = 2,704.41'$
 $E = 252.51'$
 $SE = 0.042$ ft/ft



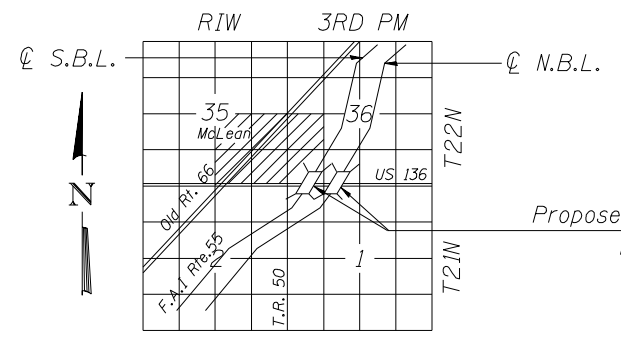
PROFILE GRADE (FAI 55)
 (Top of overlay @ median edge of Pvt.)
 The profile grade is 0.02 ft above the
 existing profile grade.



Expires 11-30-2022
 01/27/2022

PROPOSED REHABILITATION WORK

- Bridge Wearing Surface Removal on Deck and Approaches.
- Patch the Deck and Approaches as needed and Attach Stud Shear Connectors.
- Place Hot-Mix Asphalt Surface Course with a 2 1/4" Depth on Deck and Vaulted Abutments.
- Place Hot-Mix Asphalt Surface Course with a 2 1/4" Depth on Approaches.
- Place Polymer Concrete Nosing.
- Place Silicon Joint Sealer 2 Inch.



LOCATION SKETCH

GENERAL PLAN & ELEVATION
 F.A.I. 55 OVER U.S. ROUTE 136
 SECTION (57-10HB)BR
 McLEAN COUNTY
 STATION 753+54.41
 S.N. 057-0154

MODEL: \\MODEL\MAME
 FILE: \\NAME: \\PUBLIC\paw_bentley.com\PIV\DOT\Documents\DOT\Office\Dir\dir: S:\Project\0570557\CADD\Drawn\CAD\Sheet\0570557.dwg_057-0154.dwg

USER NAME = shawleres	DESIGNED -	REVISED -
PLOT SCALE = 680,0000' / in.	CHECKED -	REVISED -
PLOT DATE = 12/16/2021	DATE -	REVISED -

STATE OF ILLINOIS
 DEPARTMENT OF TRANSPORTATION

GENERAL PLAN & ELEVATION
 S.N. 0154 SB & S.N. 057-0155

SCALE: SHEET 1 OF 10 SHEETS STA. TO STA.

F.A.I. RTE.	SECTION	COUNTY	TOTAL SHEETS	SHEET NO.
55	(57-10HB)BR	MCLEAN	19	5
CONTRACT NO. 70F57				
ILLINOIS FED. AID PROJECT				

TOTAL BILL OF MATERIAL		
ITEM	UNIT	TOTAL
PROTECTIVE SHIELD	SQ. YD.	279.0
POLYMERIZED HOT-MIX ASPHALT SURFACE COURSE, IL 9.5 FG, MIX D N90	TON	152.5
STUD SHEAR CONNECTORS	EACH	72.0
BRIDGE WEARING SURFACE REMOVAL	SQ. YD.	1207.8
APPROACH SLAB REPAIR (PARTIAL DEPTH)	SQ. YD.	16.1
DECK SLAB REPAIR (PARTIAL)	SQ. YD.	12.1
DECK SLAB REPAIR (FULL DEPTH, TYPE I)	SQ. YD.	3.6
DECK SLAB REPAIR (FULL DEPTH, TYPE II)	SQ. YD.	93.2
SILICONE JOINT SEAL 2"	FOOT	106.0
POLYMER CONCRETE	SQ. FT.	12.5

GENERAL NOTES

Plan dimensions and details relative to existing structure have been taken from existing plans and are subject to nominal construction variations. It shall be the Contractor's responsibility to verify such dimensions and details in the field and make necessary approved adjustments prior to construction or ordering of materials. Such variations shall not be cause for additional compensation for a change in the scope of the work, however, the Contractor will be paid for the quantity actually furnished at the unit price bid for the work.

See special provisions " Deck Slab Repair" for additional requirements pertaining to Deck Slab Repair and H.M.A. Removal (Deck).

Care shall be taken to prevent damage to the existing floor drains. If the existing floor drains are damaged during construction, the contractor will be responsible for providing and installing an approved replacement at no additional cost to the department.

Joint openings shall be adjusted according to article 520.04 of the std. specs. when the deck is poured at an ambient temperature other than 50°F.

Areas of deck repairs shown are estimated. The engineer shall show actual locations of deck repairs on AS-BUILT plans.

MODEL: \\MODEL\MAME
 FILE: \\MAILS_PUB\Public\paw_bentley.com\FW\DOT\Documents\DOT_Offices\Dir\dir: S:\Project\0570E57\CADD\data\CAD\sheet\0570E57.dwg_057-0154.dgn

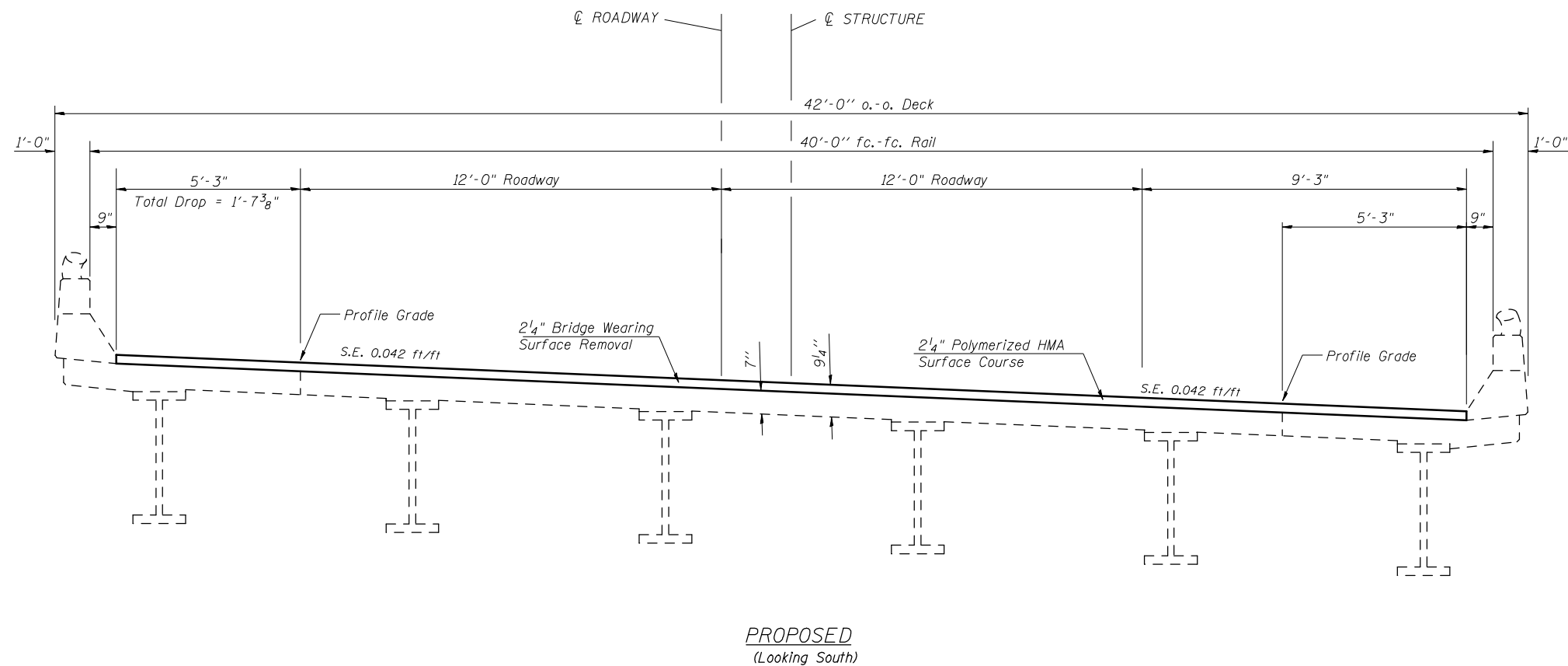
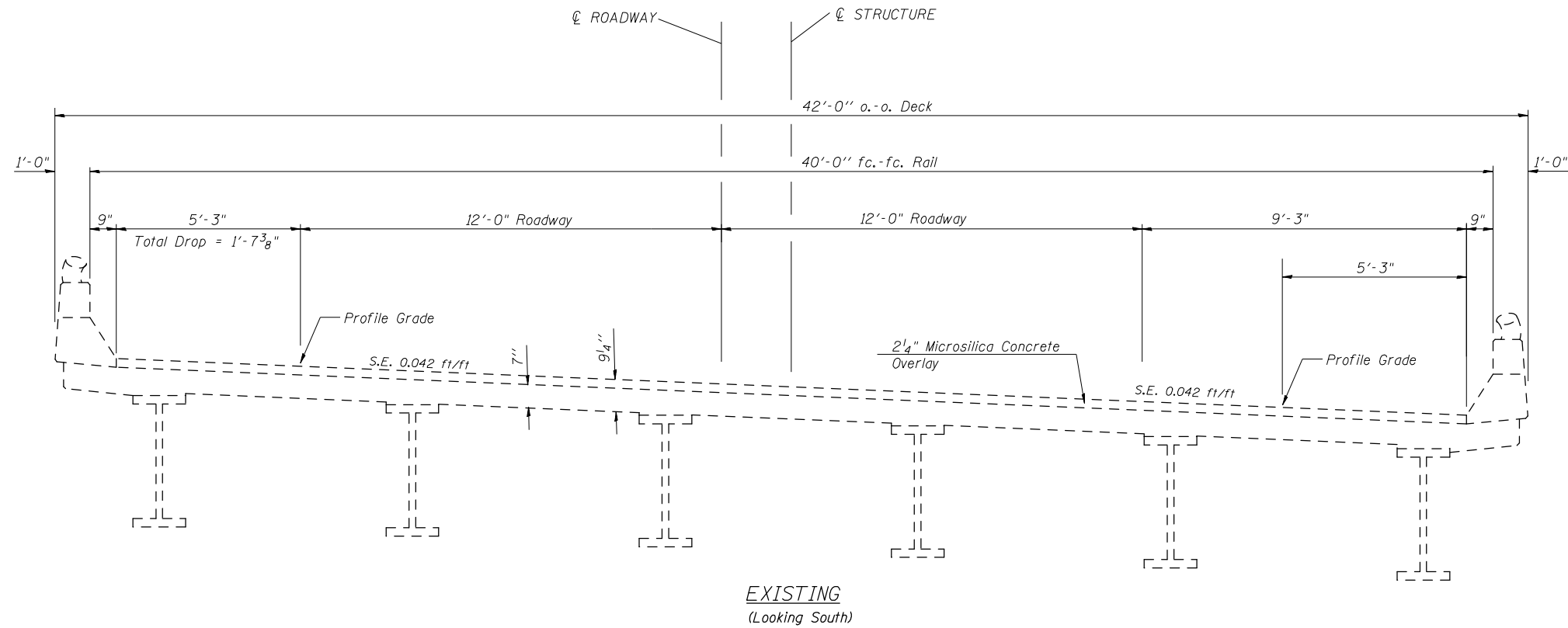
USER NAME = shawleres	DESIGNED -	REVISED -
	DRAWN -	REVISED -
PLOT SCALE = 680,0000 ' / in.	CHECKED -	REVISED -
PLOT DATE = 12/16/2021	DATE -	REVISED -

STATE OF ILLINOIS
DEPARTMENT OF TRANSPORTATION

BILL OF MATERIALS & GENERAL NOTES
S.N. 057-0154

SCALE: SHEET 2 OF 10 SHEETS STA. TO STA.

F.A.I. RTE.	SECTION	COUNTY	TOTAL SHEETS	SHEET NO.
55	(57-10HB)BR	MCLEAN	19	6
			CONTRACT NO. 70F57	
		ILLINOIS	FED. AID PROJECT	



Note - All transverse dimensions are radial.

MODEL: \\MODEL\MAME
 FILE: \\MAILS_P\public\paw_beaufay.com\PIV\DOT\Documents\DOT_Offices\Dir\dr: S:\Project\057057\CADD\Drawn\CAD\Sheet\057057.dwg_057-0154.dwg

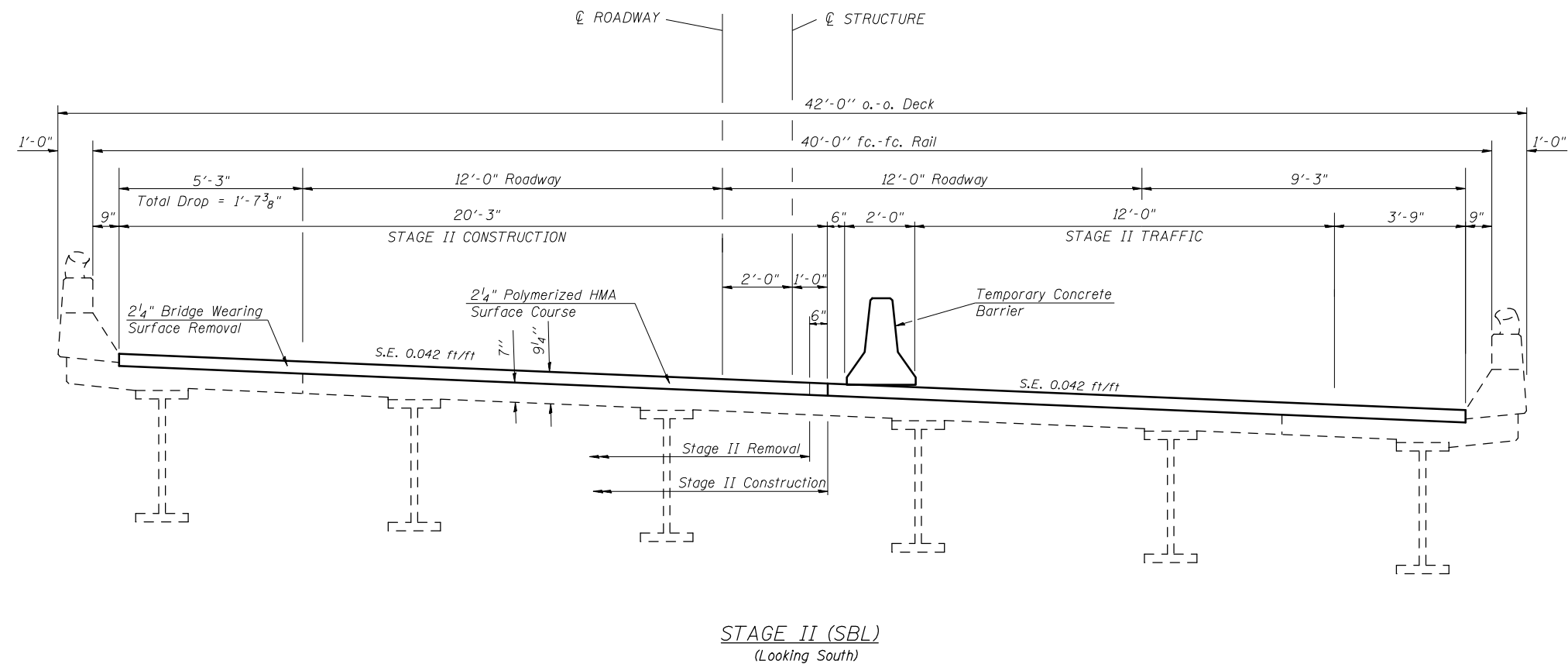
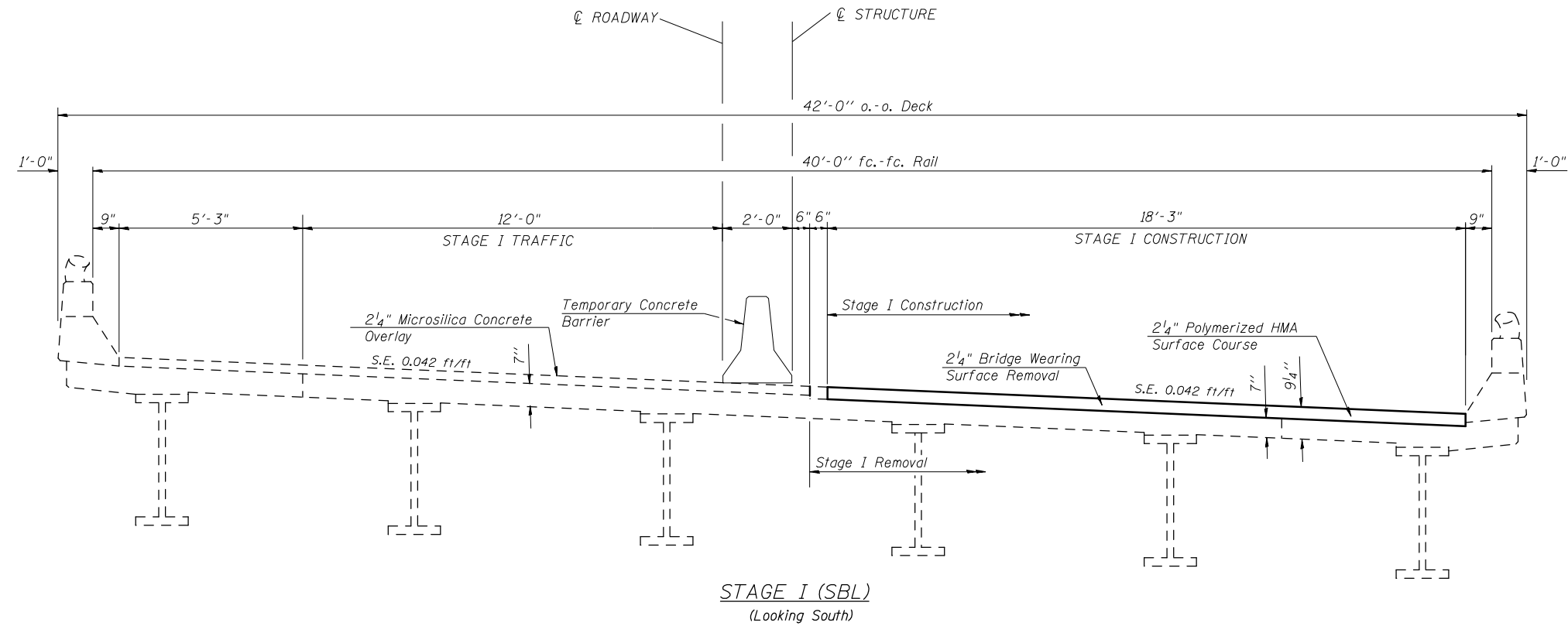
USER NAME = shawleres	DESIGNED -	REVISED -
	DRAWN -	REVISED -
PLOT SCALE = 680,0000 ' / in.	CHECKED -	REVISED -
PLOT DATE = 11/10/2021	DATE -	REVISED -

**STATE OF ILLINOIS
DEPARTMENT OF TRANSPORTATION**

**DECK CROSS SECTION
S.N. 057-0154**

SCALE: SHEET 3 OF 10 SHEETS STA. TO STA.

F.A.I. RTE.	SECTION	COUNTY	TOTAL SHEETS	SHEET NO.
55	(57-10HB)BR	MCLEAN	19	7
CONTRACT NO. 70F57				
ILLINOIS FED. AID PROJECT				



Note - All transverse dimensions are radial.

MODEL: \\MODEL\MNMF
 FILE: \\MAILS_P\public\paw_bentley.com\PIV\DOT\Documents\DOT_Offices\Dir\dr: S:\Project\057057\CADD\Draw\CAD\Sheet\057057.dwg_057-0154.dgn

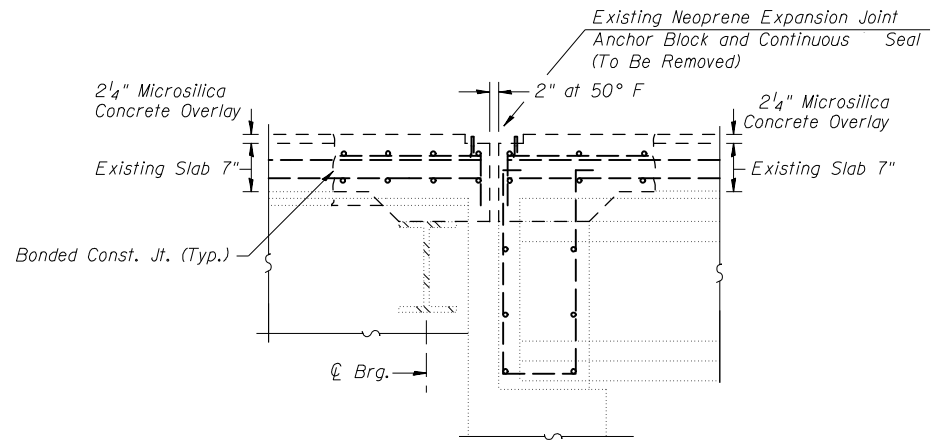
USER NAME = shawleres	DESIGNED -	REVISED -
	DRAWN -	REVISED -
PLOT SCALE = 680,0000 ' / in.	CHECKED -	REVISED -
PLOT DATE = 11/10/2021	DATE -	REVISED -

**STATE OF ILLINOIS
DEPARTMENT OF TRANSPORTATION**

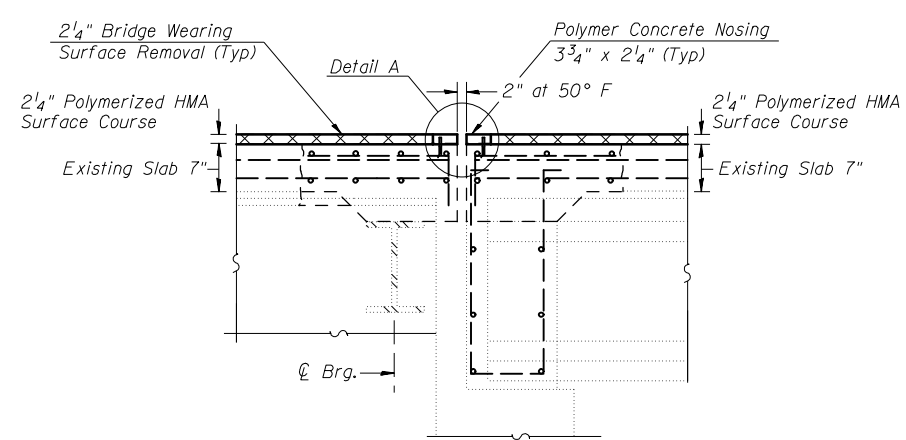
**DECK STAGING DETAIL
S.N. 057-0154**

SCALE: SHEET 4 OF 10 SHEETS STA. TO STA.

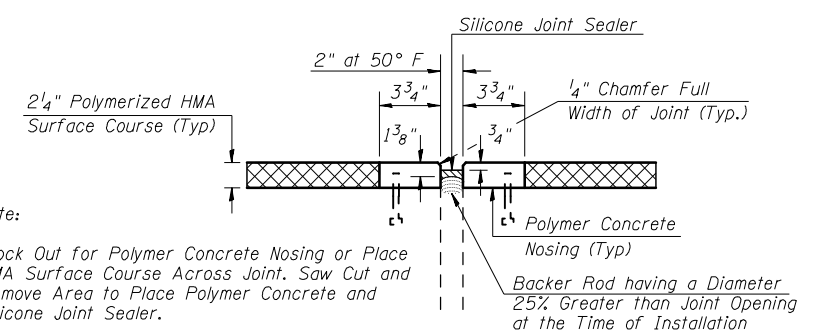
F.A.I. RTE.	SECTION	COUNTY	TOTAL SHEETS	SHEET NO.
55	(57-10HB)BR	MCLEAN	19	8
CONTRACT NO. 70F57			ILLINOIS FED. AID PROJECT	



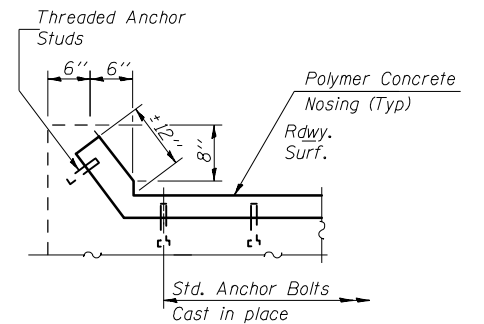
EXISTING SECTION A-A
(Dimensions are at Right Angles)



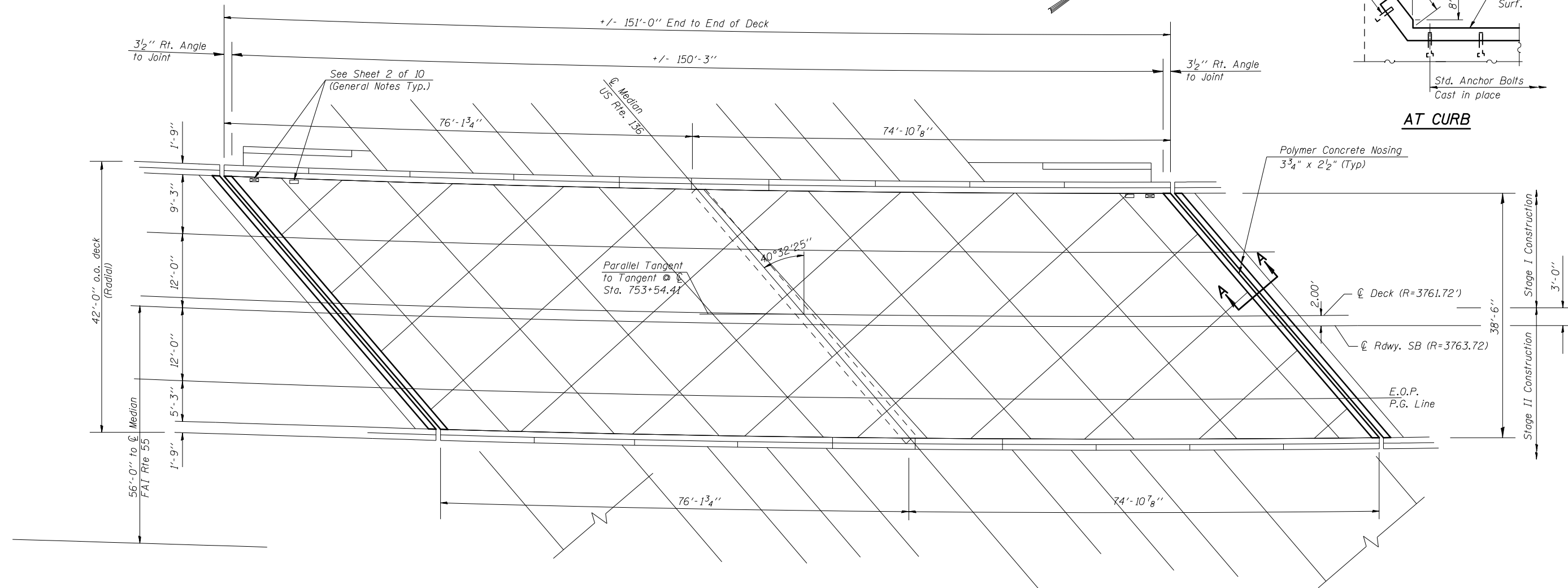
PROPOSED SECTION A-A
(Dimensions are at Right Angles)



DETAIL A
(Dimensions are at Right Angles)



AT CURB



LEGEND



Bridge Wearing Surface Removal 2 1/4"
Polymerized HMA Surface Course 2 1/4"

Notes

All transverse dimensions are radial.

Paver electronic grade control shall be operated from a preset grade control stringline. See Artical 406.06(e)

DECK TOP PLAN (MAIN SPANS)

ITEM	UNIT	TOTAL
Bridge Wearing Surface Removal	Sq. Yd.	1207.8
Polymerized HMA Surface Course, II 9.5 FG, Mix D N90	Ton	152.5
Bituminous Material (Tack Coat)	Pound	545.0
Polymer Concrete	Cu. Ft.	12.5
Silicone Joint Seal 2"	Foot	106.0

MODEL: I:\MODEL\MHFS... FILE: 057-0154.dgn

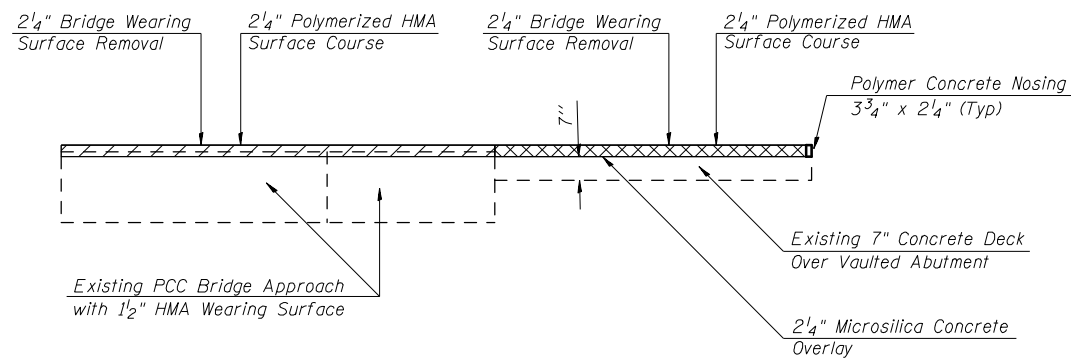
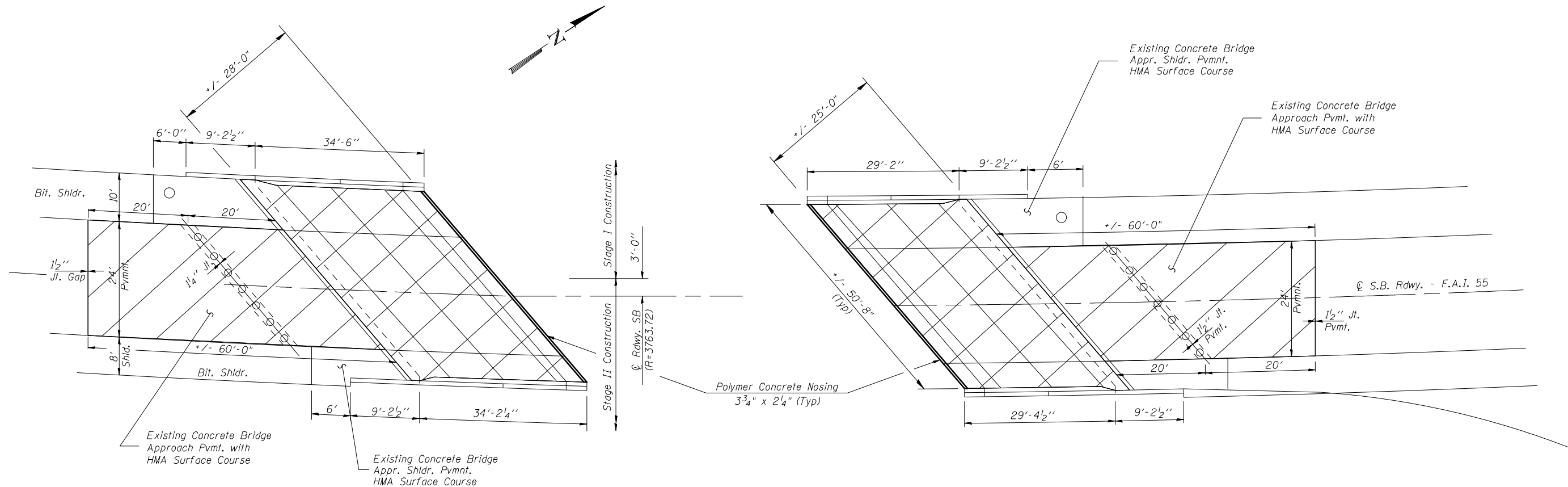
USER NAME = shawleres	DESIGNED -	REVISED -
PLOT SCALE = 680,0000' / in.	DRAWN -	REVISED -
PLOT DATE = 1/23/2022	CHECKED -	REVISED -
	DATE -	REVISED -

**STATE OF ILLINOIS
DEPARTMENT OF TRANSPORTATION**

**BRIDGE WEARING SURFACE PLAN
S.N. 057-0154**

SCALE: SHEET 6 OF 10 SHEETS STA. TO STA.

F.A.I. RTE. 55	SECTION (57-10H)BR	COUNTY MCLEAN	TOTAL SHEETS 19	SHEET NO. 10
ILLINOIS FED. AID PROJECT			CONTRACT NO. 70F57	



**DECK TOP PLAN
(APPROACH SPANS)**

Notes

All transverse dimensions are radial.
Paver electronic grade control shall be operated from a preset grade control stringline, See Artical 406.06(e)
Approach Span quantities included in Table on Sheet 6 of 10.

LEGEND

- Bridge Wearing Surface Removal 2 1/4" Polymerized HMA Surface Course 2 1/4"
- Bridge Wearing Surface Removal 2 1/4" Polymerized HMA Surface Course 2 1/4"

MODEL: \\MODELS\MNMF... FILE: \\MAILS... PROJECT: \\PROJECTS\DOT... SHEET: 057-0154.dgn

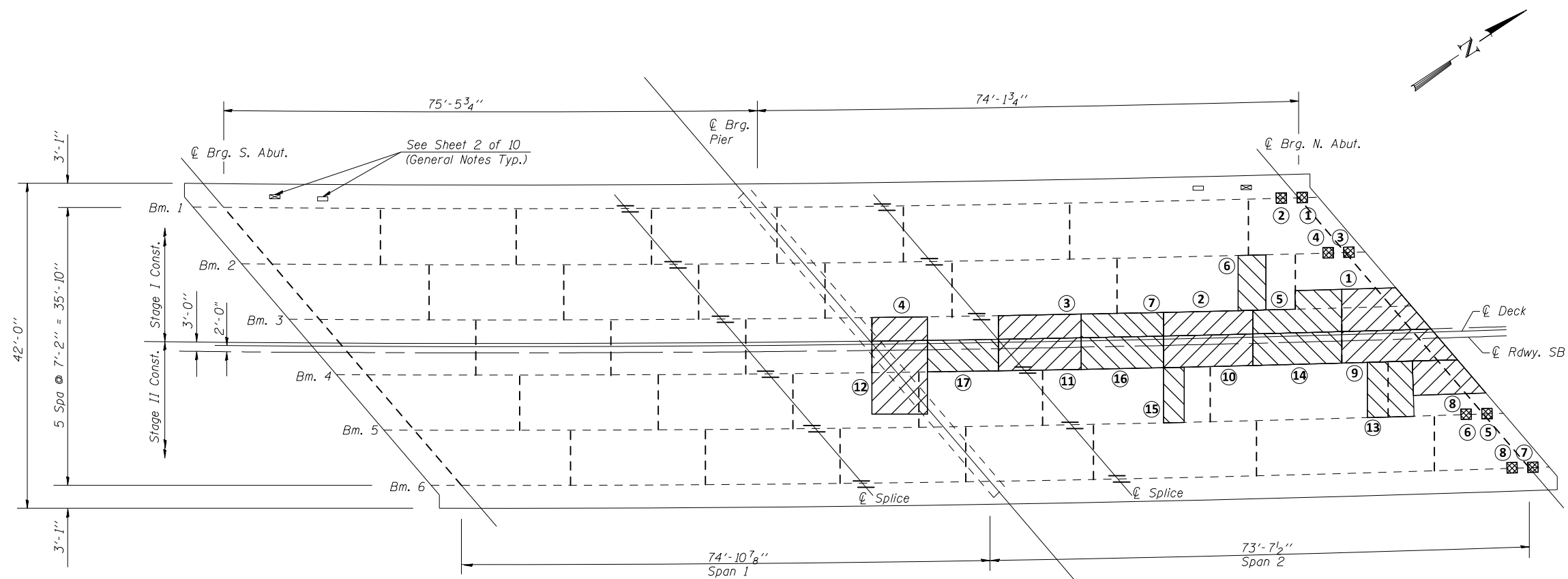
USER NAME = shawleres	DESIGNED -	REVISED -
	DRAWN -	REVISED -
PLOT SCALE = 680,0000 ' / in.	CHECKED -	REVISED -
PLOT DATE = 12/16/2021	DATE -	REVISED -

**STATE OF ILLINOIS
DEPARTMENT OF TRANSPORTATION**

**APPROACH WEARING SURFACE PLAN
S.N. 057-0154**

SCALE: SHEET 7 OF 10 SHEETS STA. TO STA.

F.A.I. RTE.	SECTION	COUNTY	TOTAL SHEETS	SHEET NO.
55	(57-10H)BR	MCLEAN	19	11
CONTRACT NO. 70F57			ILLINOIS FED. AID PROJECT	






DECK PLAN

Notes

Full Depth Patching Divided into Two Pours to Maintain Slab Stability.

LEGEND

-  Deck Slab Repair (Full Depth, Type II) FIRST POUR
-  Deck Slab Repair (Full Depth, Type II) SECOND POUR
-  Deck Slab Repair (Full Depth, Type I)

Deck Slab Repair (Full Depth, Type II)

Deck Slab Repair (Full Depth, Type II)

Stud Shear Connectors (Deck Slab Repair Type I)

PATCH NO.	SIZE		DECK SLAB REPAIR (PART DEPTH)		DECK SLAB REPAIR (FD TY 1)		DECK SLAB REPAIR (FD TY 2)	
	L ft.	W ft.	SQ YD	SQ YD	SQ YD	SQ YD	SQ YD	SQ YD
1	10.0	4.583					5.1	
2	10.0	2.583					2.9	
3	9.25	2.583					2.7	
4	8.00	2.583					2.3	
5	10.0	3.583					4.0	
6	4.0	7.167					3.2	
7	10.0	2.583					2.9	
8	10.0	7.167					8.0	
9	13.0	4.583					6.6	

PATCH NO.	SIZE		DECK SLAB REPAIR (PART DEPTH)		DECK SLAB REPAIR (FD TY 1)		DECK SLAB REPAIR (FD TY 2)	
	L ft.	W ft.	SQ YD	SQ YD	SQ YD	SQ YD	SQ YD	SQ YD
10	10.0	4.583					5.1	
11	10.0	4.583					5.1	
12	8.0	10.0					8.9	
13	8.0	7.167					6.4	
14	10.0	4.583					5.1	
15	3.0	7.167					2.4	
16	10.0	4.583					5.1	
17	9.0	4.583					4.6	

PATCH NO.	SIZE		DECK SLAB REPAIR (PART DEPTH)		DECK SLAB REPAIR (FD TY 1)		DECK SLAB REPAIR (FD TY 2)	
	L ft.	W ft.	SQ YD	SQ YD	SQ YD	SQ YD	SQ YD	SQ YD
1	2.0	2.0			0.45			
2	2.0	2.0			0.45			
3	2.0	2.0			0.45			
4	2.0	2.0			0.45			
5	2.0	2.0			0.45			
6	2.0	2.0			0.45			
7	2.0	2.0			0.45			
8	2.0	2.0			0.45			

ITEM	UNIT	TOTAL
Deck Slab Repair (Full Depth Type II)	Sq. Yd.	80.4
Deck Slab Repair (Full Depth Type I)	Sq. Yd.	3.6

MODEL: \\MODELS\MAME FILE: \\MAME\p\110101\p\110101\Documents\DOT Office\Drawings\Project\0570157\CADD\Drawings\0570157_057-0154.dwg

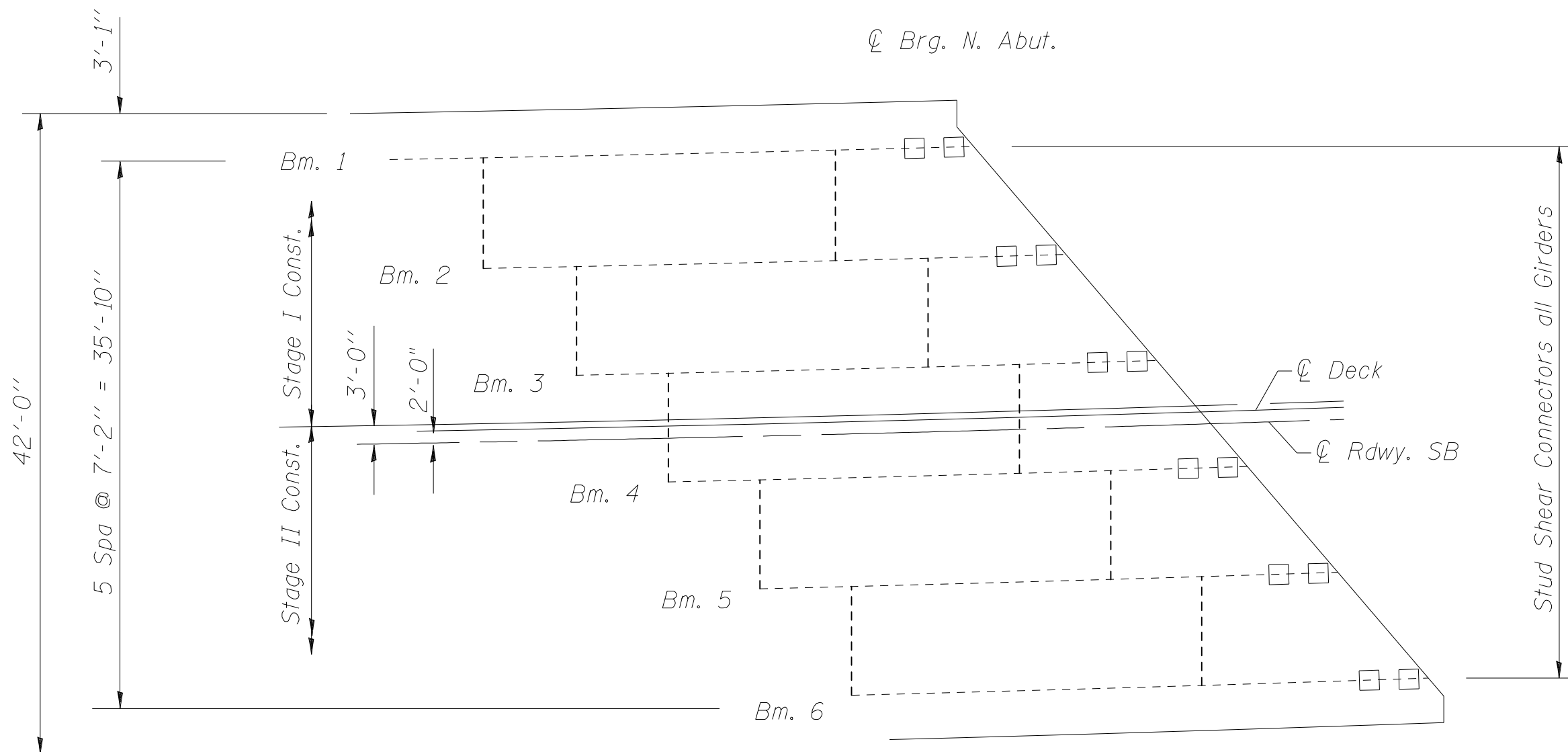
USER NAME = shawleres	DESIGNED -	REVISD -
	DRAWN -	REVISD -
PLOT SCALE = 680,0000 ' / in.	CHECKED -	REVISD -
PLOT DATE = 12/16/2021	DATE -	REVISD -

**STATE OF ILLINOIS
DEPARTMENT OF TRANSPORTATION**

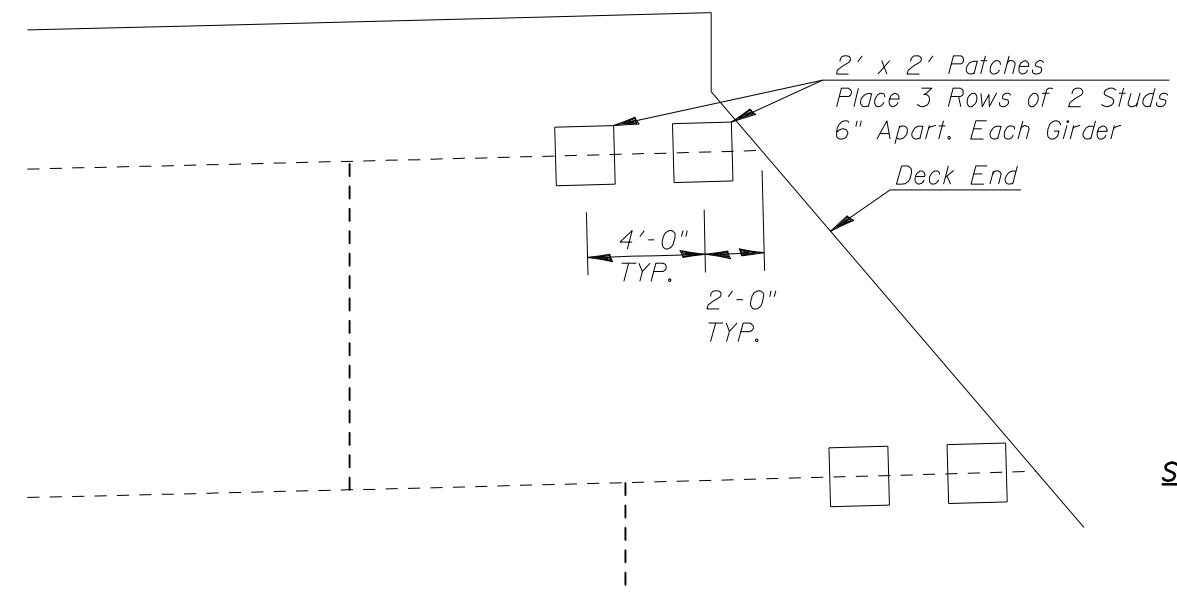
**BRIDGE DECK PATCHING PLAN
S.N. 057-0154**

SCALE: SHEET 8 OF 10 SHEETS STA. TO STA.

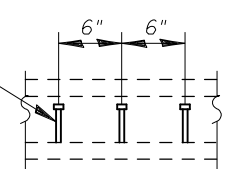
F.A.I. RTE.	SECTION	COUNTY	TOTAL SHEETS	SHEET NO.
55	(57-10HB)BR	MCLEAN	19	12
			CONTRACT NO. 70F57	
ILLINOIS FED. AID PROJECT				



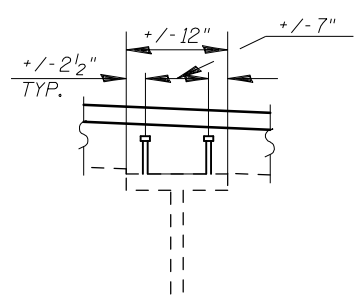
NORTH ABUTMENT PLAN



$\frac{3}{4}$ " x 5" Granular or Solid Flux Filled Headed Studs Automatically End Welded.



SECTION ALONG GIRDER AT STUD LOCATIONS



SECTION AT STUD LOCATIONS

Notes
Patch quantities included in Table on Sheet 6 of 10.

ITEM	UNIT	TOTAL
Stud Shear Connectors	Each	72.0

MODEL: I:\MODEL\MAME FILE: MAME_011112.dwg; PLOT DATE: 11/10/2021

USER NAME = shawleres	DESIGNED -	REVISED -
	DRAWN -	REVISED -
PLOT SCALE = 680,0000 ' / in.	CHECKED -	REVISED -
PLOT DATE = 11/10/2021	DATE -	REVISED -

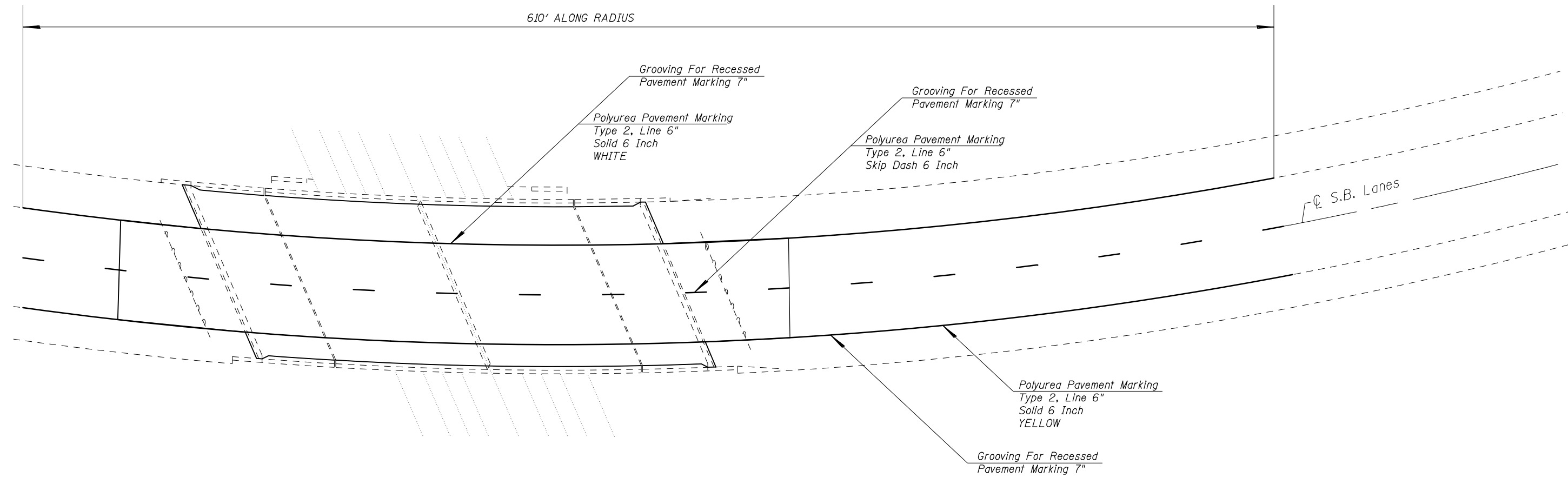
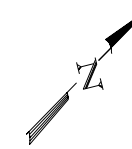
**STATE OF ILLINOIS
DEPARTMENT OF TRANSPORTATION**

**STUD SHEAR CONNECTORS DETAIL
S.N. 057-0154**

SCALE: SHEET 10 OF 10 SHEETS STA. TO STA.

F.A.I. RTE. 55	SECTION (57-10HB)BR	COUNTY MCLEAN	TOTAL SHEETS 19	SHEET NO. 14
CONTRACT NO. 70F57			ILLINOIS FED. AID PROJECT	

STRIPING DETAIL
STRUCTURE 057-0154 (SBL)



ITEM	UNIT	TOTAL
Polyurea Pavement Marking, Type 2, Line 6"	Foot	1,380.0
Grooving for Recessed Pavement Marking 7"	Foot	1,380.0

MODEL: \\MODEL\MAME
 FILE: \\MAIL: public\paw_bentley.com\PIV\DOT\Documents\DOT Office\Dir\dir: S:\Project\0570154\CADD\Drawn\CAD\Sheet\0570154_sbl_east.dgn

USER NAME = shawleres	DESIGNED -	REVISED -
	DRAWN -	REVISED -
PLOT SCALE = 1000.0000' / in.	CHECKED -	REVISED -
PLOT DATE = 11/10/2021	DATE -	REVISED -

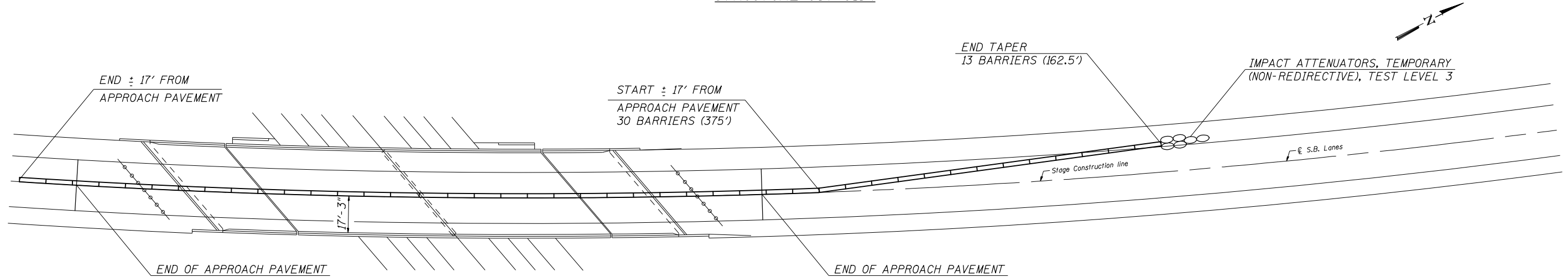
**STATE OF ILLINOIS
DEPARTMENT OF TRANSPORTATION**

**STRIPING DETAIL
S.N. 057-0154 SB**

SCALE: SHEET 1 OF 1 SHEETS STA. TO STA.

F.A.I. RTE.	SECTION	COUNTY	TOTAL SHEETS	SHEET NO.
55	(57-10HB)BR	MCLEAN	19	15
ILLINOIS FED. AID PROJECT			CONTRACT NO. 70F57	

STAGE I (SBL)
STRUCTURE 057-0154



PLAN NOTES:

ALL STAGING DETAILS SHALL BE IN ACCORDANCE WITH TRAFFIC CONTROL AND PROTECTION STANDARD 701402 AND PAID FOR AT THE CONTRACT UNIT PRICE PER EACH LOCATION.

ALL WORK WITHOUT TEMPORARY CONCRETE BARRIER IN PLACE SHALL BE IN ACCORDANCE WITH TRAFFIC CONTROL AND PROTECTION STANDARDS 701400 AND 701401.

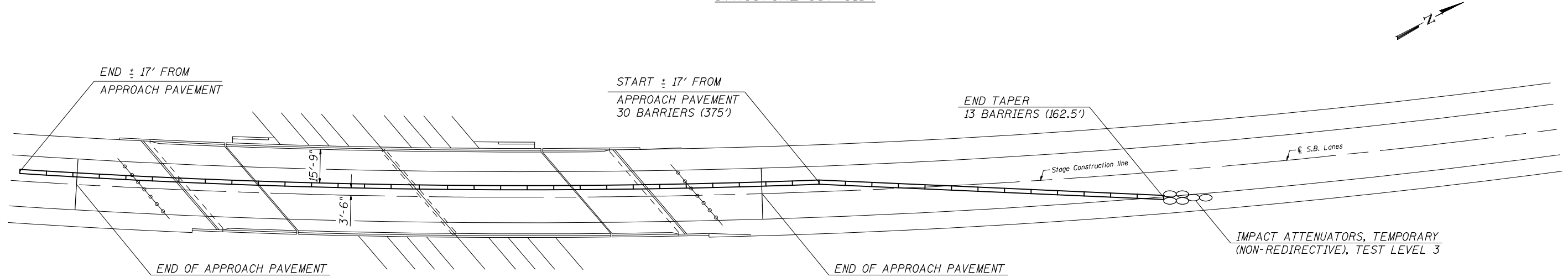
FOR ADDITIONAL DETAILS ASSOCIATED WITH TEMPORARY CONCRETE BARRIER, SEE HIGHWAY STANDARD 701402.

REFLECTOR SHALL BE ATTACHED TO GUARDRAIL AND BARRIER WALL AT 25 FOOT CENTERS. COST TO BE INCLUDED WITH TRAFFIC CONTROL AND PROTECTION STANDARD 701402.

REFLECTORIZED TEMPORARY MARKING TAPE SHALL BE PLACED THROUGHOUT THE TAPER, AND ALONGSIDE BOTH SIDES OF THE WORK AREA. EXISTING MARKINGS THAT CONFLICT WITH THE STAGED TRAFFIC MARKINGS SHALL BE REMOVED OR COVERED. COST TO REMOVE EXISTING MARKINGS AND FOR THE PLACEMENT AND REMOVAL OF TEMPORARY MARKINGS SHALL BE INCLUDED WITH TRAFFIC CONTROL AND PROTECTION STANDARD 701402.

ITEM	UNIT	TOTAL
Temporary Concrete Barrier	Foot	537.5
Impact Attenuators, Temporary (Non-Redirective), Test level 3	Each	1.0
Pinning Temporary Concrete Barrier	Each	12.0

STAGE II (SBL)
STRUCTURE 057-0154



PLAN NOTES:

ALL STAGING DETAILS SHALL BE IN ACCORDANCE WITH TRAFFIC CONTROL AND PROTECTION STANDARD 701402 AND PAID FOR AT THE CONTRACT UNIT PRICE PER EACH LOCATION.

ALL WORK WITHOUT TEMPORARY CONCRETE BARRIER IN PLACE SHALL BE IN ACCORDANCE WITH TRAFFIC CONTROL AND PROTECTION STANDARDS 701400 AND 701401.

FOR ADDITIONAL DETAILS ASSOCIATED WITH TEMPORARY CONCRETE BARRIER, SEE HIGHWAY STANDARD 701402.

REFLECTOR SHALL BE ATTACHED TO GUARDRAIL AND BARRIER WALL AT 25 FOOT CENTERS. COST TO BE INCLUDED WITH TRAFFIC CONTROL AND PROTECTION STANDARD 701402.

REFLECTORIZED TEMPORARY MARKING TAPE SHALL BE PLACED THROUGHOUT THE TAPER, AND ALONGSIDE BOTH SIDES OF THE WORK AREA. EXISTING MARKINGS THAT CONFLICT WITH THE STAGED TRAFFIC MARKINGS SHALL BE REMOVED OR COVERED. COST TO REMOVE EXISTING MARKINGS AND FOR THE PLACEMENT AND REMOVAL OF TEMPORARY MARKINGS SHALL BE INCLUDED WITH TRAFFIC CONTROL AND PROTECTION STANDARD 701402.

ITEM	UNIT	TOTAL
Relocate Temporary Concrete Barrier	Foot	537.5
Impact Attenuators, Relocate (Non-Redirective), Test level 3	Each	1.0
Pinning Temporary Concrete Barrier	Each	12.0

MODEL: \\MODELS\MNMF5
FILE: \\MAILS_P\public\paw_bentley.com\PIV\DOT\Documents\DOT Office\Dir\strct_5\Project\057057\CAD\Drawn\CAD\Sheet\057057.dwg, stage_width, sheet.dgn

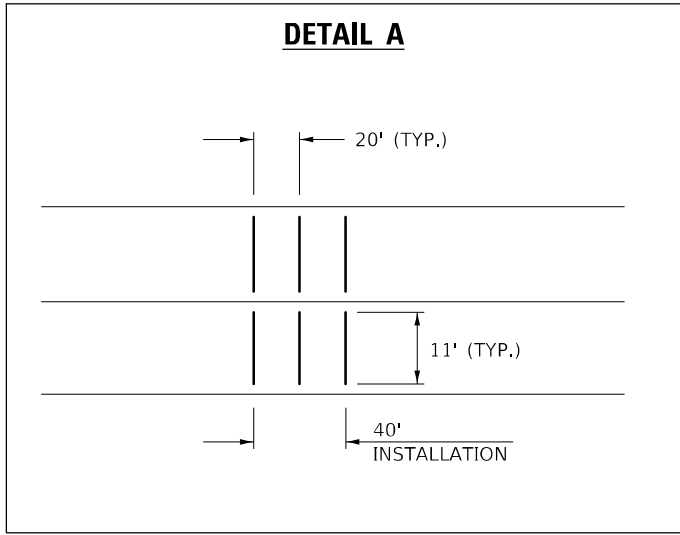
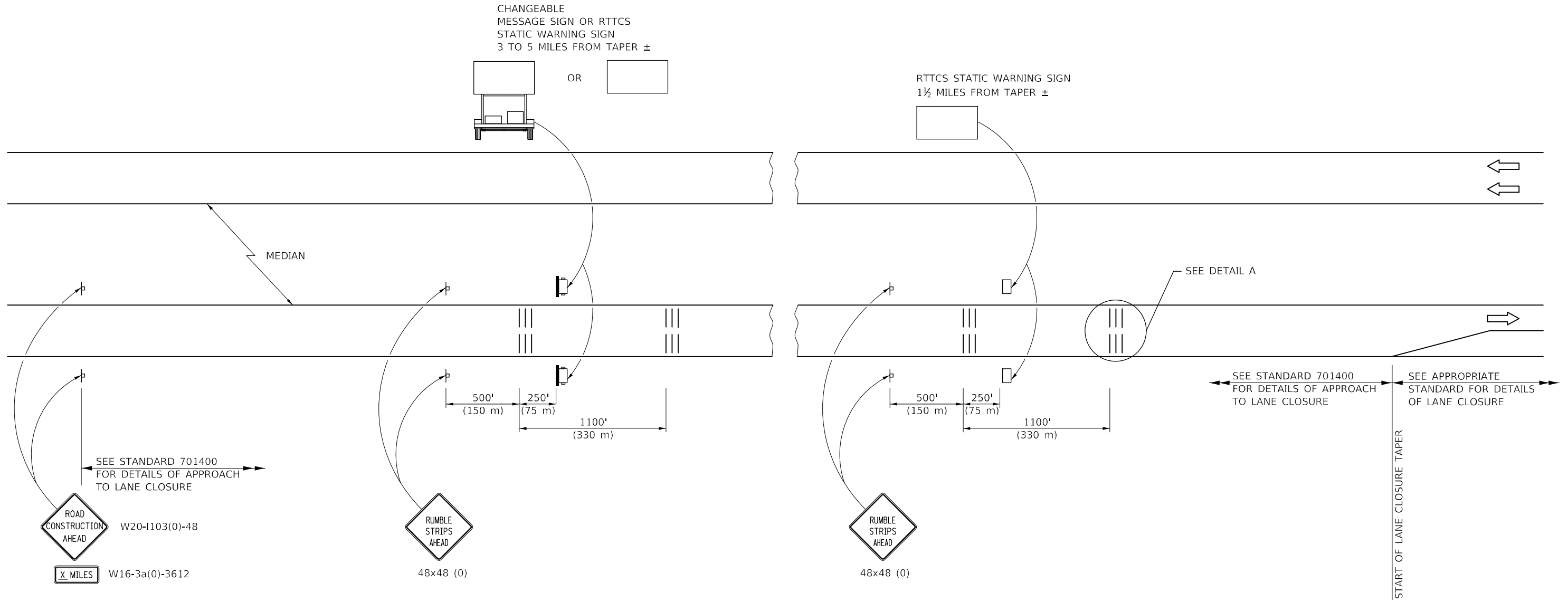
USER NAME = shawleres	DESIGNED -	REVISED -
PLOT SCALE = 1000,0000 ' / in.	DRAWN -	REVISED -
PLOT DATE = 11/10/2021	CHECKED -	REVISED -
	DATE -	REVISED -

STATE OF ILLINOIS
DEPARTMENT OF TRANSPORTATION

TEMPORARY BARRIER WALL			
S.N. 057-0154 SB			
SCALE:	SHEET 1	OF 1	SHEETS
	STA.		TO STA.

F.A.I. RTE.	SECTION	COUNTY	TOTAL SHEETS	SHEET NO.
55	(57-10HB)BR	MCLEAN	19	16
CONTRACT NO. 70F57				
ILLINOIS FED. AID PROJECT				

DETAIL FOR TEMPORARY RUMBLE STRIPS (SPECIAL)



SYMBOLS

- ▬ SIGN
- ||| TEMPORARY RUMBLE STRIPS (SPECIAL)
- ☛ TRAILER MOUNTED SIGN
- RTTCS STATIC WARNING SIGN

GENERAL NOTES

REMOVE THE TEMPORARY RUMBLE STRIPS (SPECIAL) PRIOR TO THE REMOVAL OF THE ADVANCED WARNING SIGNS.

ALL DIMENSIONS ARE IN INCHES (MILLIMETERS) UNLESS OTHERWISE SHOWN.

MODEL: \\MODEL\NAME FILE: \\NAME\PROJECT\DRAWING\PROJECT\DOT\Office\Drawings\Project\DOT\Drawings\CAD\Sheet\057057.dwg, sheet: 17 of 17

USER NAME = shawleres	DESIGNED -	REVISED -
PLOT SCALE = 800,0000' / in.	DRAWN -	REVISED -
PLOT DATE = 11/10/2021	CHECKED -	REVISED -
	DATE -	REVISED -

**STATE OF ILLINOIS
DEPARTMENT OF TRANSPORTATION**

DETAIL FOR TEMPORARY RUMBLE STRIPS (SPECIAL)

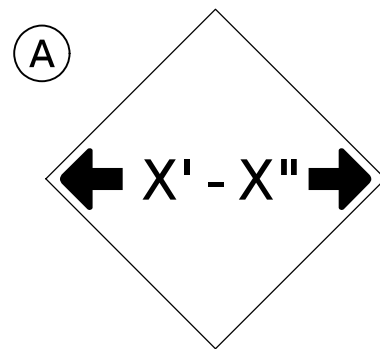
SCALE: NONE SHEET 1 OF 1 SHEETS STA. TO STA.

F.A.I. RTE.	SECTION	COUNTY	TOTAL SHEETS	SHEET NO.
55	(57-10HB)BR	MCLEAN	19	17
CONTRACT NO. 70F57				
ILLINOIS FED. AID PROJECT				

DESIGNER NOTE: PROVIDE MAP WITH SIGN LOCATIONS (A, B, ETC.) AND COORDINATE WITH TRAFFIC OPERATIONS ENGINEER.

INCLUDE DISTRICT SPECIAL PROVISION "WIDTH RESTRICTION SIGNING"

MODEL: \\MODELNAME
FILE: \\NAME.dwg
PROJECT: \\PROJECTNAME
DRAWING: \\DRAWINGNAME
DATE: \\DATE

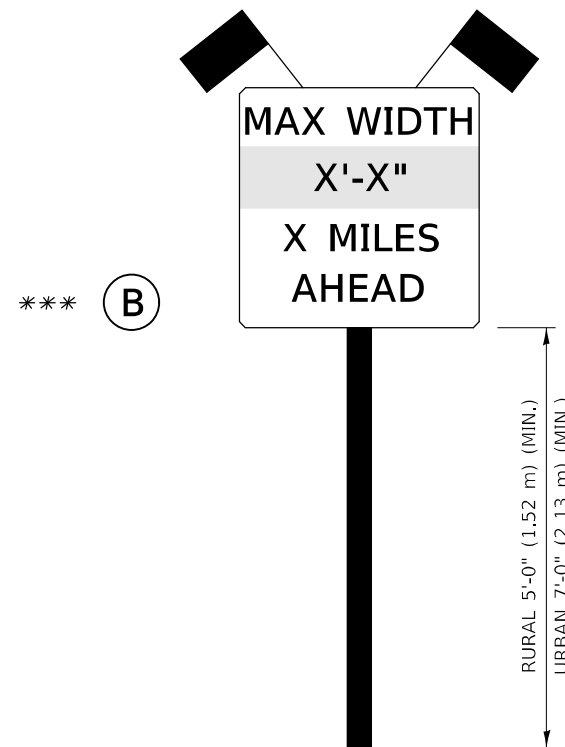


W12-2(O)-48"x48"(1200x1200)

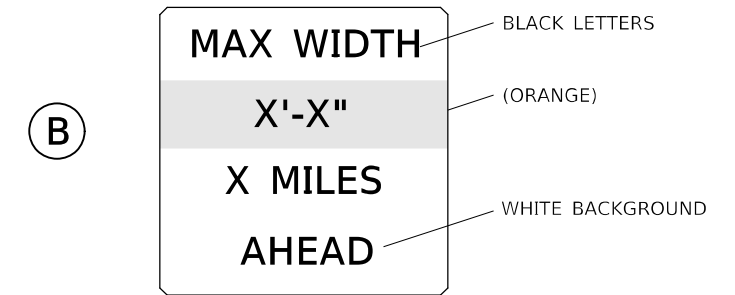
SIGN (A) 2 SIGNS - W12-2(O)-48"x48"(1200x1200) ARE TO BE PLACED AS SHOWN IN THE PLANS OR AS DIRECTED BY THE ENGINEER.

SIGN (B) 2 SIGNS - (SIGN PANEL, TYPE II) AS SHOWN ARE TO BE PLACED AS SHOWN IN THE PLANS OR AS DIRECTED BY THE ENGINEER.

*** SOUTHBOUND I-55
DUAL DISPLAY SIGN PANEL, TYPE II (B)
MAX WIDTH 14'-0" 2 MILES AHEAD SIGN
ERECTED NEAR I-55 US 136
MCLEAN / HEYWORTH 2 MILES GREENBOARD



SIGN PANEL, TYPE II



**W12-I103(O)-48"x48"(1200x1200)
"D" LETTERS/NUMBERS**

GENERAL NOTES

1. ALL TRAFFIC CONTROL DEVICES SHALL BE FURNISHED, ERECTED AND MAINTAINED BY THE CONTRACTOR.
2. ALL (B) SIGNS SHALL HAVE FLAGS INSTALLED UNLESS OTHERWISE DIRECTED.
3. LOCATIONS OF TRAFFIC CONTROL DEVICES MAY BE ADJUSTED BY THE ENGINEER.
4. ALL TRAFFIC CONTROL SHOWN ON THIS SHEET SHALL BE PAID FOR AT THE CONTRACT LUMP SUM PRICE FOR WIDTH RESTRICTION SIGNING.
5. ALL SIGNS SHALL BE POST MOUNTED UNLESS OTHERWISE DIRECTED.
6. ALL SIGNS SHOWN ORANGE (O) SHALL BE FLUORESCENT ORANGE.
7. ALL SIGNS SHOWN SHALL CONSIST OF THE CURRENT RETROREFLECTIVE SHEETING REQUIREMENTS AS OUTLINED IN SECTION 1106.01 OF THE STANDARD SPECIFICATIONS BOOK.

Note: All dimensions are in INCHES (millimeters) unless otherwise shown.

DISTRICT 5 DETAIL NO. X7200201

USER NAME = shawleres	DESIGNED -	REVISED - 05/08
	DRAWN -	REVISED - 10/08 KJT
PLOT SCALE = 800,0000' / in.	CHECKED -	REVISED - 07/09 KJT
PLOT DATE = 11/10/2021	DATE -	REVISED - 03/11 KJT

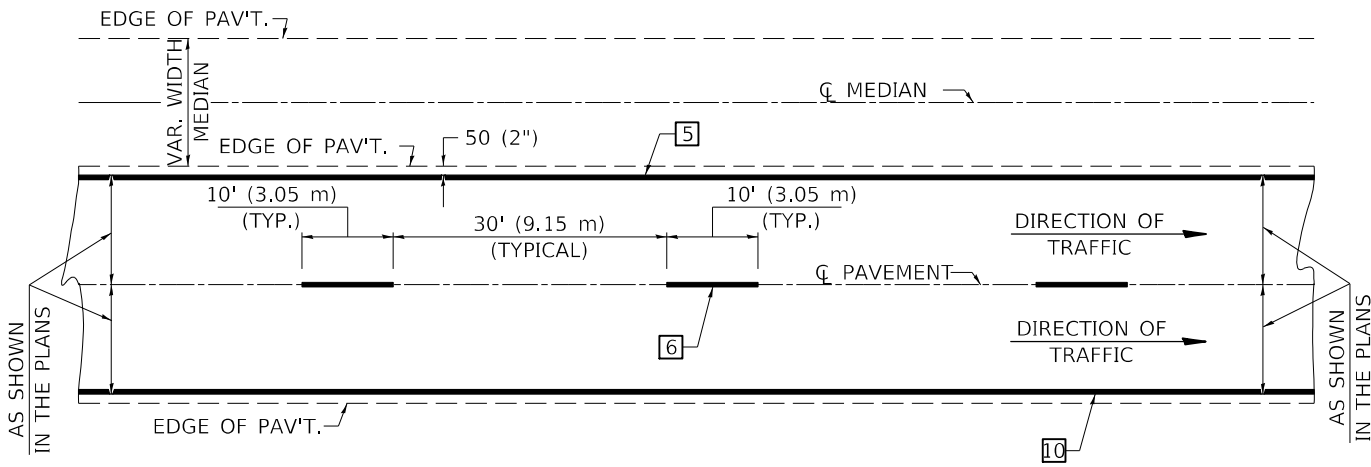
**STATE OF ILLINOIS
DEPARTMENT OF TRANSPORTATION**

WIDTH RESTRICTION SIGNING

SCALE: SHEET 1 OF 1 SHEETS STA. TO STA.

F.A.I. RTE.	SECTION	COUNTY	TOTAL SHEETS	SHEET NO.
55	(57-10HB)BR	MCLEAN	19	18
				CONTRACT NO. 70F57
ILLINOIS FED. AID PROJECT				

CENTERLINE INTERSTATE OR MULTI-LANE TWO WAY DIVIDED HIGHWAY

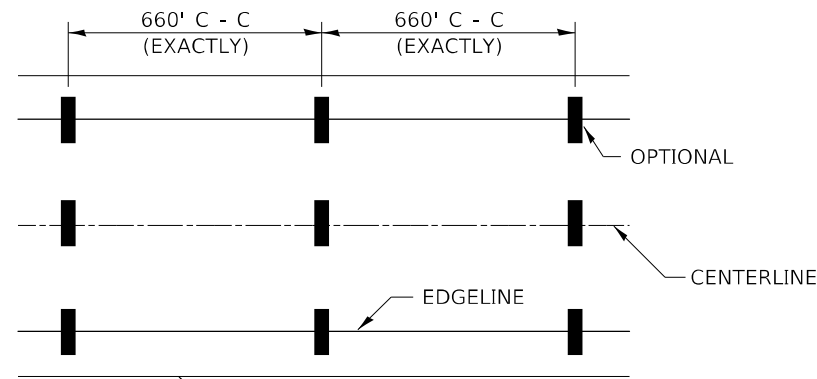


NOTE: PAVEMENT MARKINGS ARE TO BE EXTENDED THROUGH OMISSIONS WHEN APPLICABLE.

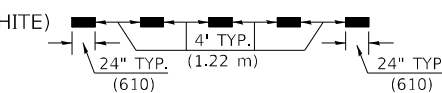
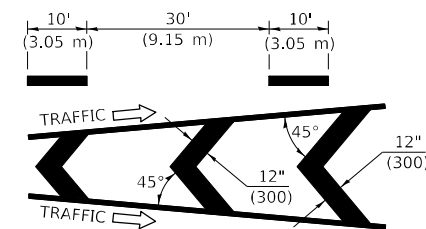
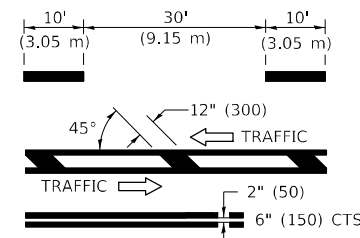
NOTE: SEE ARTICLES 780.04 & 781.03 FOR LOCATION OF STRIPES AND MARKERS RELATIVE TO EDGES OR JOINTS.

FOR RAISED REFLECTIVE PAVEMENT MARKERS, REFER TO STANDARD 781001.

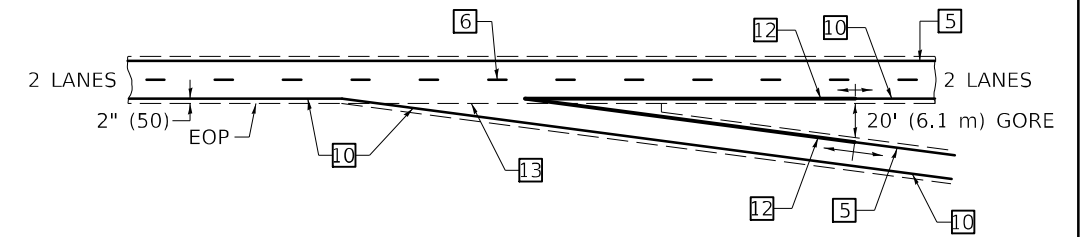
TYPICAL PAVEMENT MARKING LEGEND



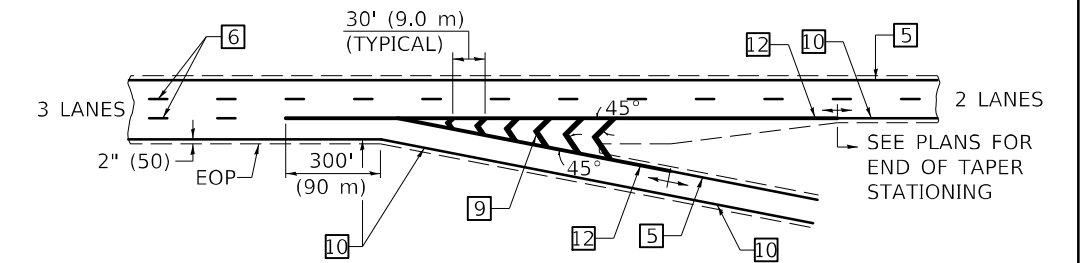
- 1 4" (100) SKIP-DASH (YELLOW)
- 2 4" (100) SOLID (YELLOW)
- 3 12" (300) DIAGONAL (YELLOW)
- 4 4" (100) DOUBLE YELLOW (NARROW)
- 5 6" (150) SOLID (YELLOW)
- 6 6" (150) SKIP-DASH (WHITE)
- 7 4" (100) SKIP-DASH (WHITE)
- 8 4" (100) SOLID (WHITE)
- 9 12" (300) DIAGONAL (WHITE)
- 10 6" (150) SOLID (WHITE)
- 11 24" (600) STOP BAR (WHITE)
- 12 8" (200) SOLID (WHITE)
- 13 6" (150) LANE LINE EXTENSIONS (WHITE)



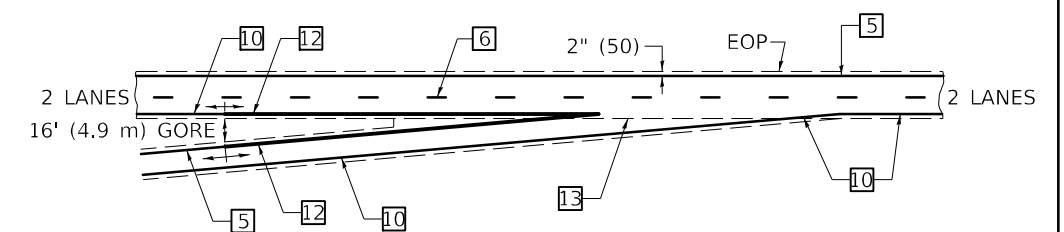
TYPICAL EXIT RAMP TERMINAL



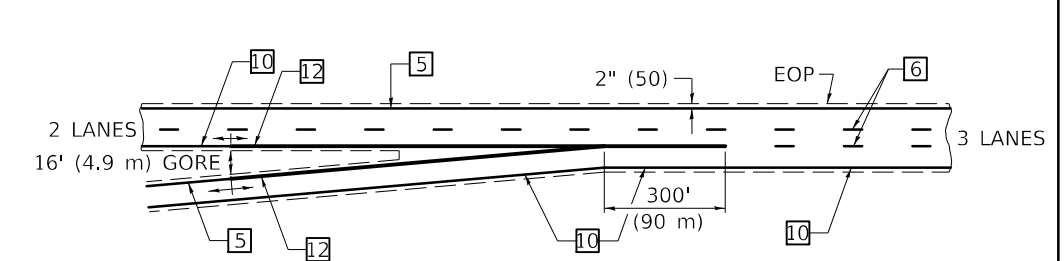
EXIT RAMP TERMINAL with EXCLUSIVE (auxiliary) LANE



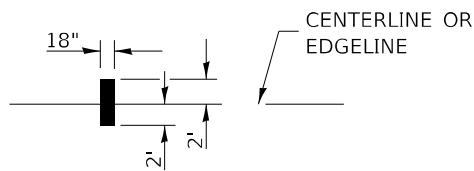
TYPICAL ENTRANCE RAMP TERMINAL



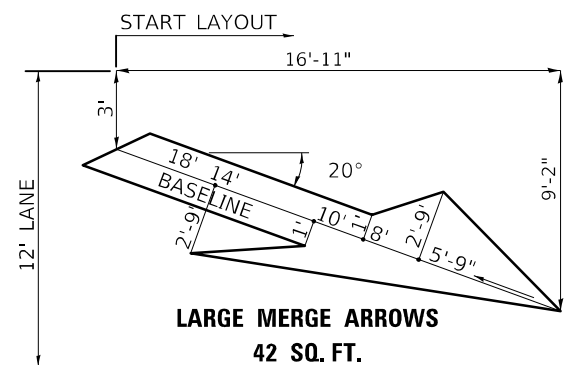
ENTRANCE RAMP TERMINAL with EXCLUSIVE LANE



IT WILL BE NECESSARY TO HAVE A REPRESENTATIVE OF THE STATE POLICE PRESENT SO THAT THE ACCURACY OF MEASUREMENT CAN BE ATTESTED TO IN COURT.



AERIAL SPEED CHECK ZONES



LARGE MERGE ARROWS
42 SQ. FT.

Note: All dimensions are in INCHES (millimeters) unless otherwise shown.

DISTRICT 5 DETAIL NO. 7800BBBB

USER NAME = shawleres	DESIGNED -	REVISED - 11/06
	DRAWN -	REVISED - 12/20
PLOT SCALE = 800,0000' / in.	CHECKED -	REVISED -
PLOT DATE = 11/10/2021	DATE -	REVISED -

STATE OF ILLINOIS
DEPARTMENT OF TRANSPORTATION

PAVEMENT MARKING (INTERSTATE & MULTI-LANE APPLICATIONS)

SCALE: SHEET 1 OF 1 SHEETS STA. TO STA.

F.A.I. RTE.	SECTION	COUNTY	TOTAL SHEETS	SHEET NO.
55	(57-10HB)BR	MCLEAN	19	19
CONTRACT NO. 70F57				
ILLINOIS FED. AID PROJECT				

MODEL: \\MODEL\NAME: FILE: NAME: PROJECT: DISTRICT: OFFICE: SHEET: DATE: 11/10/2021