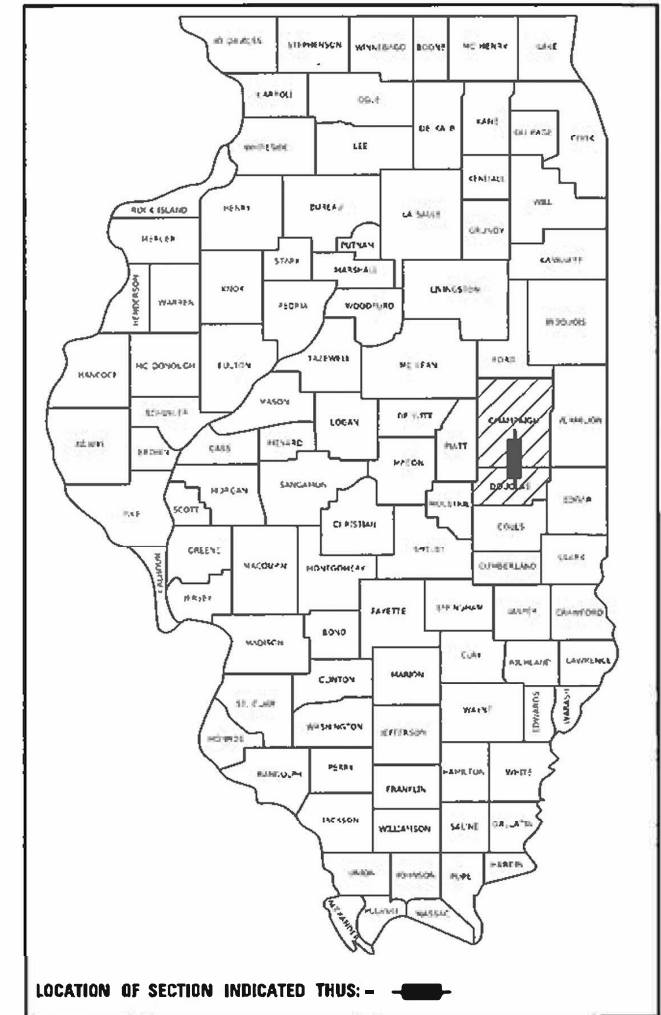


STATE OF ILLINOIS
DEPARTMENT OF TRANSPORTATION

F.A. RTE.	SECTION	COUNTY	TOTAL SHEETS	SHEET NO.
VAR.	D5 CM PATCH 2022-1	ILLINOIS	15	1
ILLINOIS			CONTRACT NO. 70F58	

CHAMPAIGN & DOUGLAS

D-95-004-22



LOCATION OF SECTION INDICATED THUS: - [shaded area]

PROPOSED
HIGHWAY PLANS

FAI ROUTE 57 (I-57)
SECTION D5 CM PATCH 2022-1

CONTRACT MAINTENACE PATCHING
DOUGLAS, CHAMPAIGN COUNTIES

C-95-021-22



FOR INDEX OF SHEETS, SEE SHEET NO. 2
FOR SUMMARY OF QUANTITIES, SEE SHEET NO. 5

TRAFFIC DATA

F.A.I. 57				
	Leg "A"	Leg "B"	Leg "C"	Leg "D"
2021 ADT =	23,400	21,600	24,900	25,800
P.V. % =	62.6	62.1	65.8	66.7
S.U. % =	3.6	3.2	4.5	3.8
M.U. % =	33.8	34.7	29.7	29.5
INTERSTATE				
FUNCT. CLASS.	Class I	Class I	Class I	Class I
TRUCK RTE. =	Yes	Yes	Yes	Yes
N.H.S. RTE. =	Yes	Yes	Yes	Yes

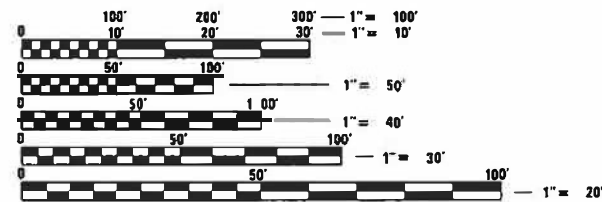
Leg "A" is I-57 south of IL 133 in Arcola.
Leg "B" is I-57 from IL 133 in Arcola to US 36 in Tuscola.
Leg "C" is I-57 from US 36 in Tuscola to US 45 in Pesotum.
Leg "D" is I-57 north of US 45 in Pesotum.

FUNCTIONAL CLASSIFICATION

INTERSTATE

TOWNSHIPS

CHAMPAIGN - PESOTUM, TOLONO, CHAMPAIGN
DOUGLAS - ARCOLA, TUSCOLA



FULL SIZE PLANS HAVE BEEN PREPARED USING STANDARD ENGINEERING SCALES. REDUCED SIZED PLANS WILL NOT CONFORM TO STANDARD SCALES. IN MAKING MEASUREMENTS ON REDUCED PLANS, THE ABOVE SCALES MAY BE USED.

J.U.L.I.E.
JOINT UTILITY LOCATION INFORMATION FOR EXCAVATORS
1-800-892-0123
OR 811

PROJECT ENGINEER JASON STULTS, PE
PROJECT MANAGER MATTHEW MURPHY
PHONE: 217-465-4181
CONTRACT NO. 70F58

GROSS LENGTH = 161,277.60 FT. = 30.545 MILES
NET LENGTH = 161,277.60 FT. = 30.545 MILES

STATE OF ILLINOIS
DEPARTMENT OF TRANSPORTATION

SUBMITTED 12/16 2021
Kensil A. Dombroski REGIONAL ENGINEER

February 4 2022
[Signature] ENGINEER OF DESIGN AND ENVIRONMENT

February 4 2022
[Signature] DIRECTOR OF HIGHWAYS PROJECT IMPLEMENTATION

PRINTED BY THE AUTHORITY
OF THE STATE OF ILLINOIS

INDEX OF SHEETS:

- 1 COVER SHEET
- 2 INDEX OF SHEETS
- 2 HIGHWAY STANDARDS
- 2 GENERAL NOTES
- 2 COMMITMENTS
- 3 DETAILED LOCATION MAP: DOUGLAS COUNTY
- 4 DETAILED LOCATION MAP: CHAMPAIGN COUNTY
- 5 SUMMARY OF QUANTITIES
- 6-11 TYPICAL CROSS SECTIONS
- 12 SCHEDULE OF QUANTITIES
- 13-14 CLASS A PATCHING (SPECIAL)
- 15 TEMPORARY RUMBLE STRIPS (SPECIAL)

GENERAL NOTES:

G.N.-100A
ELECTRONIC FILES AND/OR ELECTRONIC SURVEY INFORMATION INCLUDING CADD FILES WILL NOT BE AVAILABLE TO THE CONTRACTOR.

G.N.-780 SPL
PAVEMENT MARKINGS FOR THIS PROJECT IS TO BE PERFORMED BY OTHERS. FIELD PERSONNEL WILL NOTIFY GARY SIMS, DISTRICT 5 TRAFFIC OPERATIONS ENGINEER AT (217) 251-4181 WHEN THE PROJECT IS COMPLETE AND READY FOR PAVEMENT MARKINGS.

LIST OF HIGHWAY STANDARDS:

- 000001-08 STANDARD SYMBOLS, ABBREVIATIONS AND PATTERNS
- 001001-02 AREAS OF REINFORCEMENT BARS
- 001006 DECIMAL OF AN INCH AND OF A FOOT
- 701400-11 APPROACH TO LANE CLOSURE
- 701401-13 LANE CLOSURE, FREEWAY/EXPRESSWAY
- 701411-09 LANE CLOSURE, MULTILANE, AT ENTRANCE OR EXIT RAMP >45 MPH
- 701426-09 LANE CLOSURE, MULTILANE, INTERMITTENT OR MOVING OPER., FOR SPEEDS > 45 MPH
- 701428-01 TRAFFIC CONTROL SETUP AND REMOVAL FREEWAY/EXPRESSWAY
- 701901-08 TRAFFIC CONTROL DEVICES

COMMITMENTS:

NO COMMITMENTS REQUIRED FOR THIS PROJECT.

MODEL: I:\MODEL\NAME FILE: NAME: P:\Public\paw_bentley.com\FW\DOT\Documents\DOT_Offices\Dir\dr_5\Project\0570F58\CADD\data\CAD\sheet\0570F58.dwg - GenNotes.dgn

USER NAME = g0t1eJr	DESIGNED - JRG	REVISED -
	DRAWN - JRG	REVISED -
PLOT SCALE = 40,0000 */ in.	CHECKED -	REVISED -
PLOT DATE = 12/16/2021	DATE -	REVISED -

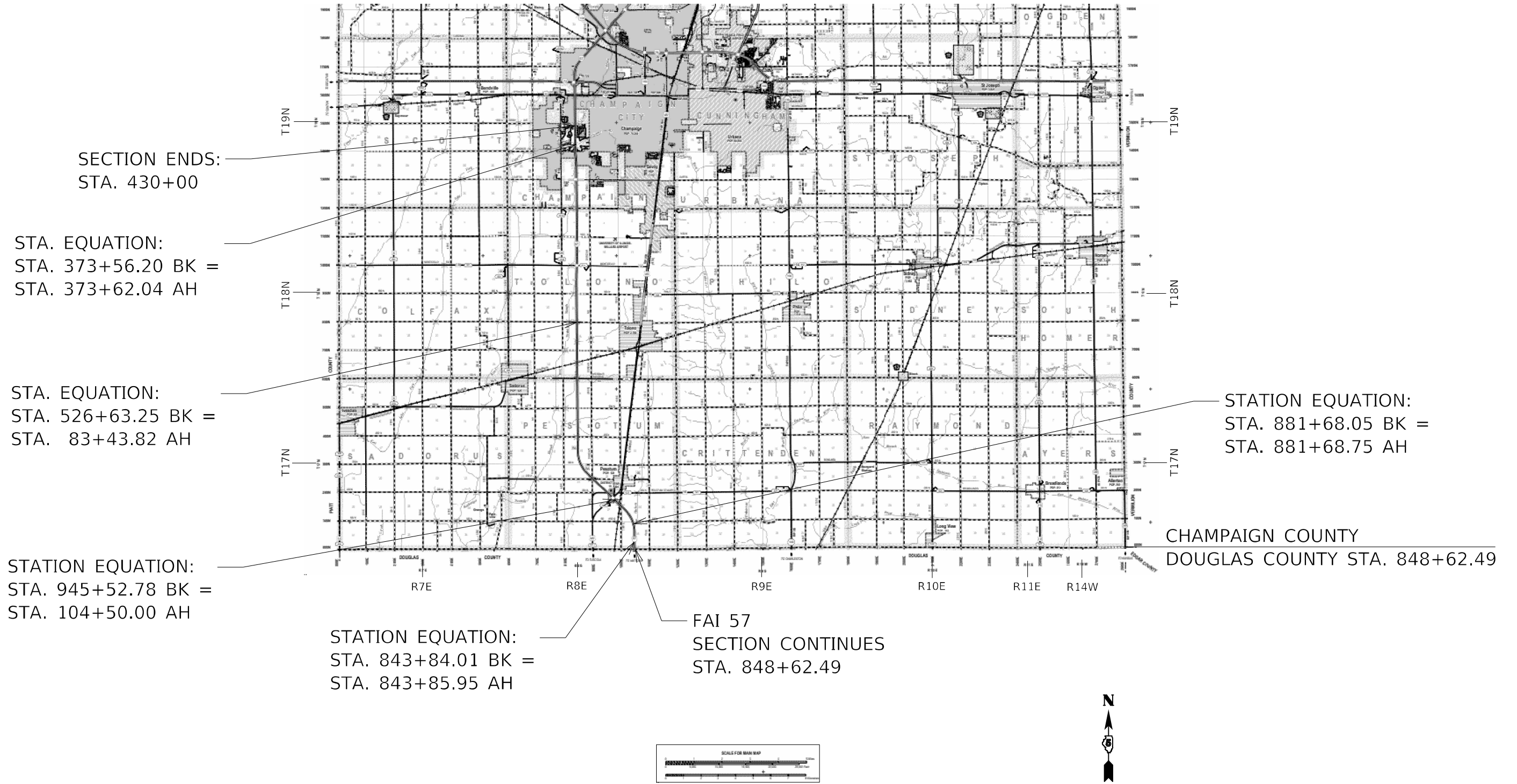
**STATE OF ILLINOIS
DEPARTMENT OF TRANSPORTATION**

**HIGHWAY STANDARDS, INDEX OF SHEETS,
GENERAL NOTES AND COMMITMENTS**

SCALE: SHEET 1 OF 1 SHEETS STA. TO STA.

F.A. RTE.	SECTION	COUNTY	TOTAL SHEETS	SHEET NO.
VAR.	D5 CM PATCH 2022-1	*	15	2
			CONTRACT NO. 70F58	
		ILLINOIS	FED. AID PROJECT	

DETAILED LOCATION MAP: CHAMPAIGN COUNTY



MODEL: \\MODEL\MAME
 FILE: \\MAILS_P\pub\c-pa-beadefy.com\FW\DOT\Documents\DOT\Office\Dir\dr: S:\Project\057058\CAD\Drawn\CAD\sheet\057058\chc_location.dgn

USER NAME = goblejr	DESIGNED - JRG	REVISED -
	DRAWN - JRG	REVISED -
PLOT SCALE = 40,0000 */ in.	CHECKED -	REVISED -
PLOT DATE = 12/16/2021	DATE -	REVISED -

**STATE OF ILLINOIS
DEPARTMENT OF TRANSPORTATION**

DETAILED LOCATION MAP: CHAMPAIGN COUNTY			
SCALE:	SHEET 2	OF 2	SHEETS
STA.	TO STA.		

F.A. RTE.	SECTION	COUNTY	TOTAL SHEETS	SHEET NO.
VAR.	D5 CM PATCH 2022-1	-	15	3
CONTRACT NO. 70F58				
ILLINOIS FED. AID PROJECT				

DETAILED LOCATION MAP: DOUGLAS COUNTY

STATION EQUATION:
STA. 791+00.00 BK =
STA. 791+02.19 AH

STATION EQUATION:
STA. 736+24.61 BK =
STA. 736+26.44 AH

STATION EQUATION:
STA. 687+00.00 BK =
STA. 687+00.00 AH

CHAMPAIGN COUNTY
DOUGLAS COUNTY
STA. 848+62.49

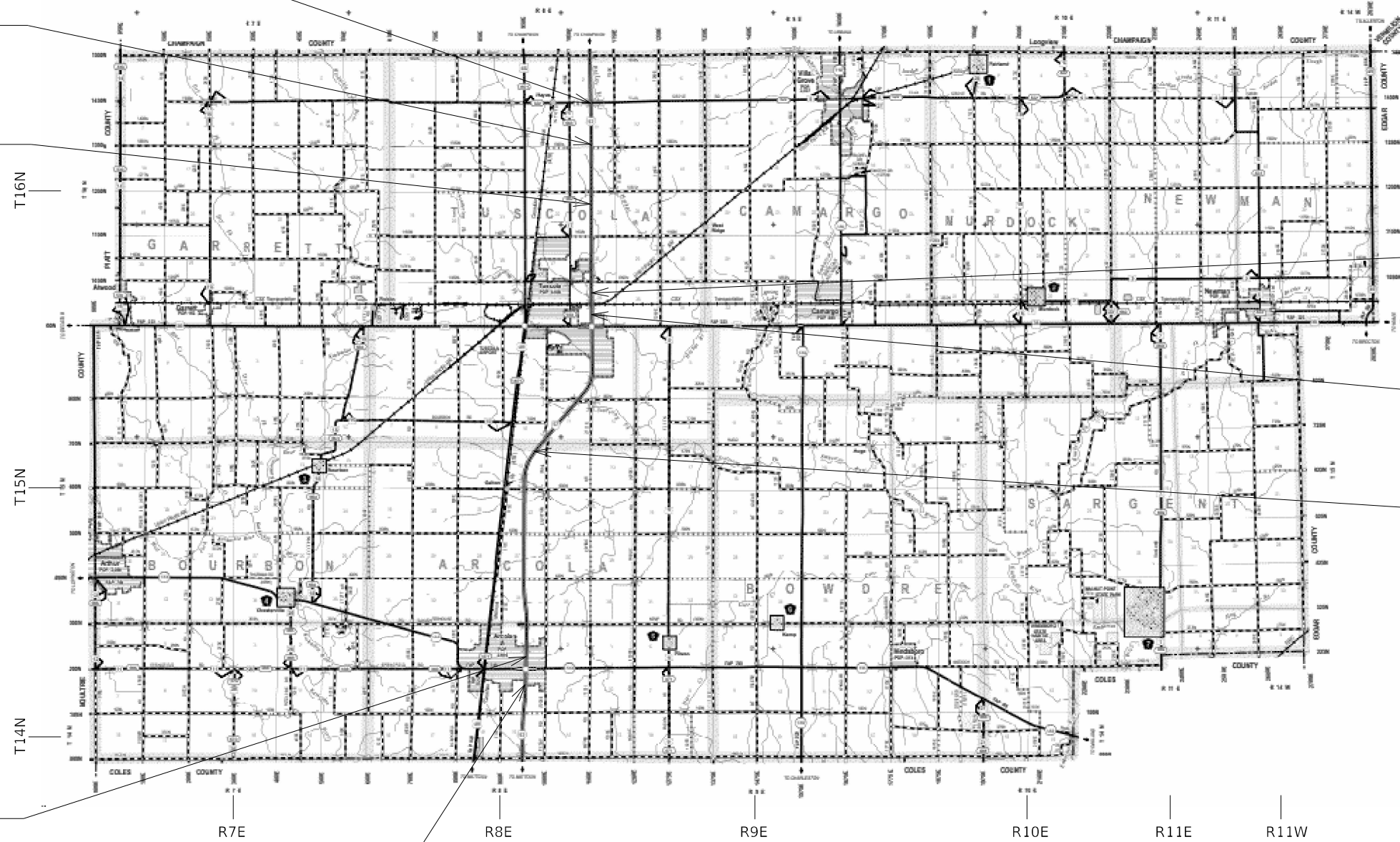
STATION EQUATION:
STA. 575+43.68 BK =
STA. 575+43.98 AH

STATION EQUATION:
STA. 547+00.00 BK =
STA. 547+01.25 AH

STATION EQUATION:
STA. 360+83.33 BK =
STA. 360+87.35 AH

STATION EQUATION:
STA. 1510+00.00 BK =
STA. 117+23.47 AH

BEGIN SECTION:
STA. 1494+00



MODEL: \\MODEL\MAPS
FILE: \\MAPS\PROJECTS\70F58\CADD\DATA\CAD\sheet10570F58.dwg

USER NAME = g01lejr	DESIGNED - JRG	REVISED -
	DRAWN - JRG	REVISED -
PLOT SCALE = 40,0000 */ in.	CHECKED -	REVISED -
PLOT DATE = 12/16/2021	DATE -	REVISED -

**STATE OF ILLINOIS
DEPARTMENT OF TRANSPORTATION**

DETAILED LOCATON MAP: DOUGLAS COUNTY

SCALE: SHEET 1 OF 2 SHEETS STA. TO STA.

F.A. RTE.	SECTION	COUNTY	TOTAL SHEETS	SHEET NO.
VAR.	D5 CM PATCH 2022-1	-	15	4
CONTRACT NO. 70F58				

ILLINOIS FED. AID PROJECT
CHAMPAIGN & DOUGLAS

LOCATION OF WORK:

COUNTY:

FUNDING BREAKOUT:

CONSTRUCTION TYPE CODE:

FAI 57 (I-57)	FAI 57 (I-57)
RURAL	RURAL
INTERSTATE	INTERSTATE
STA. 1494+00 TO STA. 848+62.49	STA. 848+62.49 TO STA. 430+00.00
DOUGLAS	CHAMPAIGN
STATE 100%	STATE 100%
0006	0006

CODE NO.	ITEM	UNIT	TOTAL QUANTITY	QUANTITY	QUANTITY
44213000	PATCH REINFORCEMENT	SQ YD	465.0	263.0	202.0
44213200	SAW CUTS	FOOT	1,440.0	682.0	758.0
44213204	TIE BARS, 3/4"	EACH	698.0	308.0	390.0
67100100	MOBILIZATION	L SUM	1.0	0.5	0.5
70100420	TRAFFIC CONTROL AND PROTECTION, 701411	EACH	8.0	4.0	4.0
70100800	TRAFFIC CONTROL AND PROTECTION, 701401	L SUM	1.0	0.5	0.5
70103815	TRAFFIC CONTROL SURVEILLANCE	CAL DA	12.0	6.0	6.0
70107025	CHANGEABLE MESSAGE SIGN	CAL DA	6.0	3.0	3.0
X2700001	TEMPORARY RUMBLE STRIPS, SPECIAL	EACI I	24.0	8.0	16.0
X4420621	CLASS A PATCHES, TYPE 2, 14" SPECIAL	SQ YD	150.0	22.0	128.0
X4420624	CLASS A PATCHES, TYPE 3, 14" SPECIAL	SQ YD	68.0	68.0	0.0
X4420628	CLASS A PATCHES, TYPE 4, 14" SPECIAL	SQ YD	248.0	174.0	74.0
* SPECIALTY ITEM					

MODEL: I:\MODEL\MHMF5
FILE: MHMF5_Plan\IUSC\Plan\beefly.com\FW\DOT\Documents\DOT_Offices\Dir\dir: S:\Project\DOT570F58\CADD\Drawn\CAD\Sheet\DOT570F58.dwg

USER NAME = g01e1r	DESIGNED - JRG	REVISED -
	DRAWN - JRG	REVISED -
PLOT SCALE = 40,0000 */ in.	CHECKED -	REVISED -
PLOT DATE = 12/16/2021	DATE -	REVISED -

STATE OF ILLINOIS
DEPARTMENT OF TRANSPORTATION

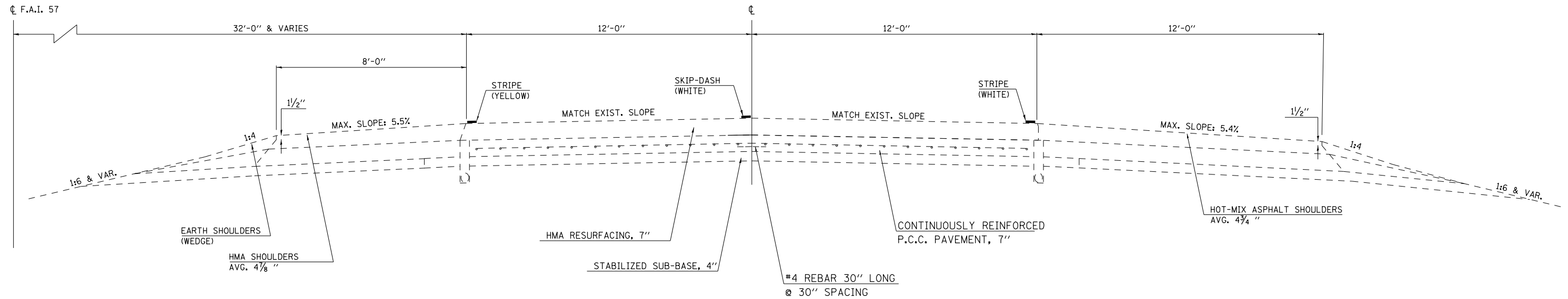
SUMMARY OF QUANTITIES

SCALE: SHEET 1 OF 1 SHEETS STA. TO STA.

F.A. RTE.	SECTION	COUNTY	TOTAL SHEETS	SHEET NO.
VAR.	D5 CM PATCH 2022-1	*	15	5
ILLINOIS FED. AID PROJECT			CONTRACT NO. 70F58	

1 EXISTING TYPICAL SECTION

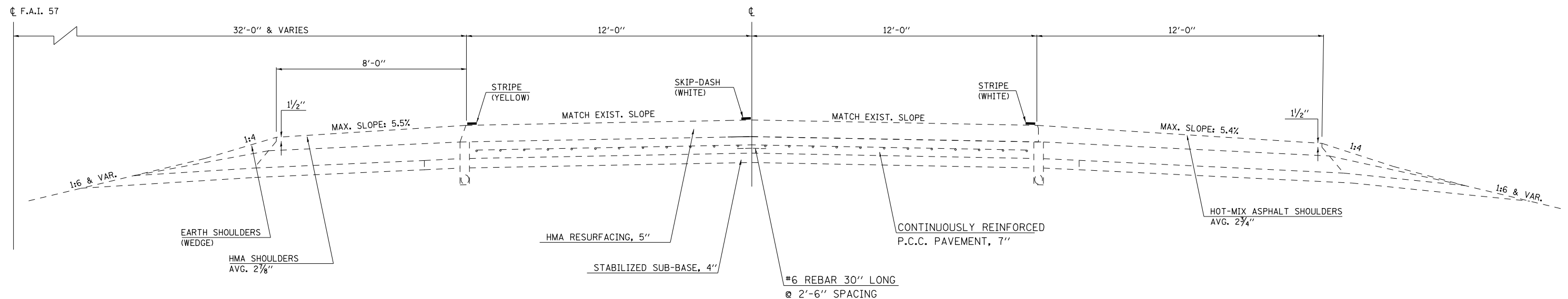
STATION 1494+00.00 IQ STATION 1510+00.00 BK DOUGLAS COUNTY
 117+23.47 AH 175+13.87 ②



2 EXISTING TYPICAL SECTION

DOUGLAS COUNTY

SOUTHBOUND LANES		NORTHBOUND LANES	
①	②	③	④
STATION 175+13.87 AH	STATION 360+87.35 AH	STATION 175+13.87 AH	STATION 310+00.00 BK
④ 524+70.00 BK	④ 463+69.00 BK	③ 330+00.00 BK	③ 360+83.33 BK
530+78.85 BK	⑤ 528+35.17 BK	④ 524+70.00 AH	③ 390+00.00 BK
	547+00.00 BK	530+77.40 BK	528+33.59 BK
			547+00.00 BK



MODEL: \\MODEL\MAME
 FILE: \\MAME_P\Public\paw_bendley.com\PIV\DOT\Documents\DOT_Offices\Dir\Dir: S\Project\1510+00.00 BK\CD\Drawings\CD\Sheets\1510+00.00 BK\1510+00.00 BK.dgn

USER NAME = goblejr	DESIGNED - JRG	REVISED -
	DRAWN - JRG	REVISED -
PLOT SCALE = 40,0000 * / in.	CHECKED -	REVISED -
PLOT DATE = 12/16/2021	DATE -	REVISED -

STATE OF ILLINOIS
 DEPARTMENT OF TRANSPORTATION

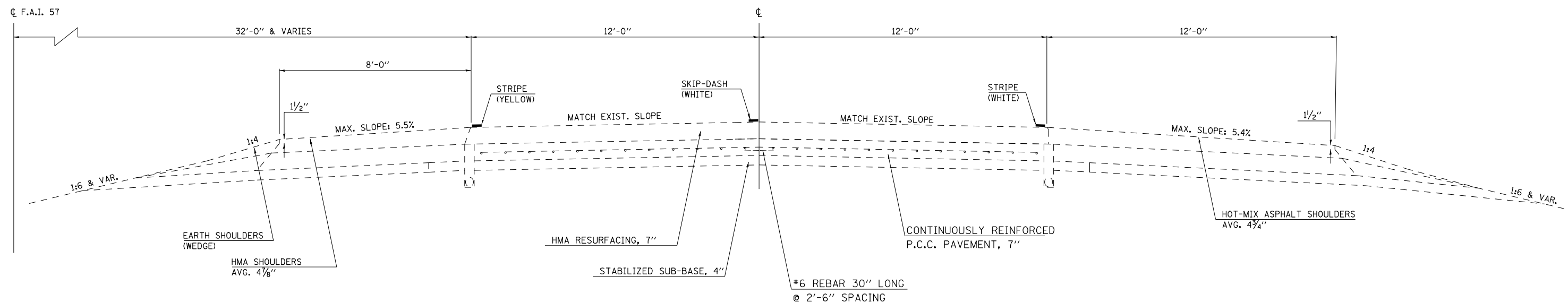
TYPICAL CROSS SECTIONS

SCALE: NTS SHEET 1 OF 6 SHEETS STA. TO STA.

F.A. RTE.	SECTION	COUNTY	TOTAL SHEETS	SHEET NO.
VAR.	D5 CM PATCH 2022-1	-	15	6
CONTRACT NO. 70F58			ILLINOIS FED. AID PROJECT	

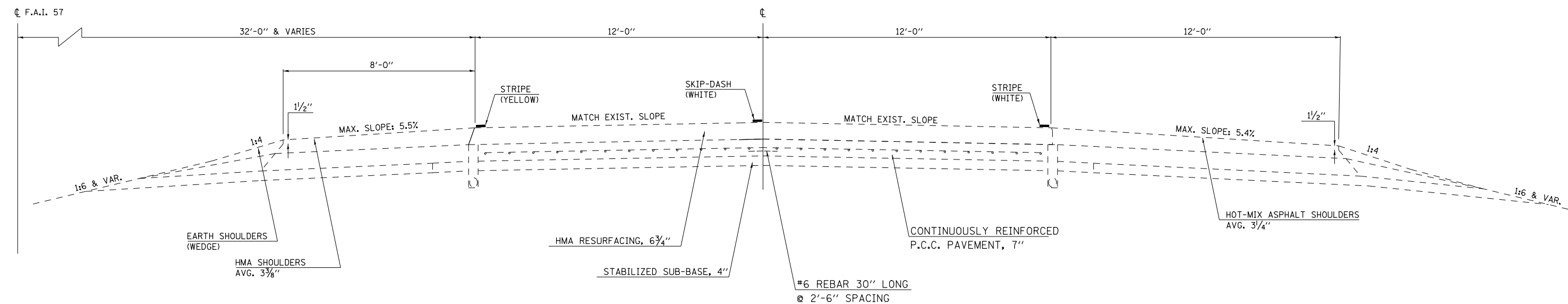
3 EXISTING TYPICAL SECTION

NORTHBOUND LANES ONLY STATION ② 310+00.00 IO STATION ② 330+00.00 DOUGLAS COUNTY
 ② 390+00.00 ④ 463+44.00



4 EXISTING TYPICAL SECTION

STATION 463+44.00 IO STATION ② 524+70.00 DOUGLAS COUNTY



MODEL: \\MODEL\MNMF
 FILE: \\MAILS_P\public\paw_bentley.com\PIV\DOT\Documents\DOT Office\Dir\Dir: S\Project\0570583\CADD\DATA\CAD\Sheet\0570583.dgn

USER NAME = goblejr	DESIGNED - JRG	REVISED -
DRAWN - JRG	REVISED -	
PLOT SCALE = 40,0000 * / in.	CHECKED -	REVISED -
PLOT DATE = 12/16/2021	DATE -	REVISED -

**STATE OF ILLINOIS
DEPARTMENT OF TRANSPORTATION**

TYPICAL CROSS SECTIONS			
SCALE: NTS	SHEET 2	OF 6 SHEETS	STA. TO STA.

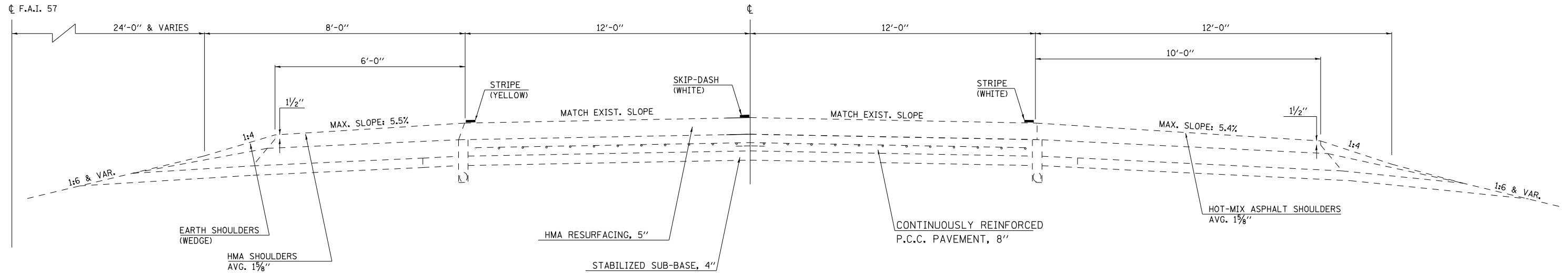
F.A. RTE.	SECTION	COUNTY	TOTAL SHEETS	SHEET NO.
VAR.	D5 CM PATCH 2022-1	-	15	7
CONTRACT NO. 70F58				
ILLINOIS FED. AID PROJECT				

1 CHAMPAIGN & DOUGLAS

5 EXISTING TYPICAL SECTION

STATION	TO	STATION
② 547+01.25 AH		575+43.68 BK
575+43.98 AH		687+00.00 BK
687+03.30 AH		736+24.61 BK
736+26.41 AH		791+00.00 BK
791+02.19 AH		843+84.01 BK
843+85.95 AH		881+68.05 BK
⑥ 927+43.92		945+52.78 BK

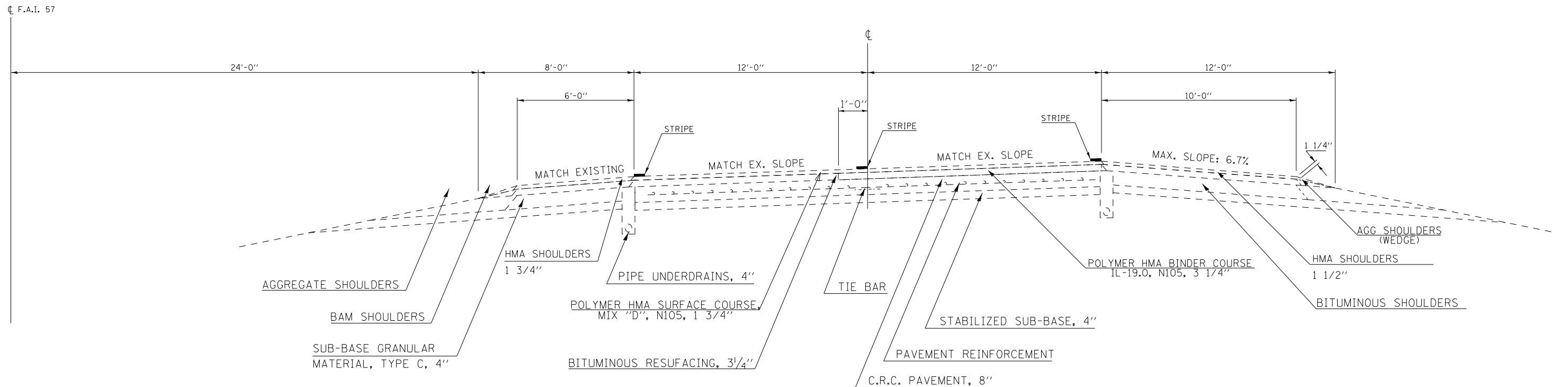
DOUGLAS /CHAMPAIGN COUNTY LINE
STA. 848+62.49



6 EXISTING TYPICAL SECTION

STATION	TO	STATION
⑤ 881+68.75 AH		927+43.92

CHAMPAIGN COUNTY



MODEL: \\MODEL\MAME FILE: \\MAILS_P\subloc\paw_bentley.com\PIV\DOT\Documents\DOT_Offices\Dir\dr: 5\Project\10570585\CAD\Drawings\CAD\Sheet\10570585.dgn

USER NAME = g01e1r	DESIGNED - JRG	REVISED -
	DRAWN - JRG	REVISED -
PLOT SCALE = 40,0000 * / in.	CHECKED -	REVISED -
PLOT DATE = 12/16/2021	DATE -	REVISED -

STATE OF ILLINOIS
DEPARTMENT OF TRANSPORTATION

TYPICAL CROSS SECTIONS

SCALE: NTS SHEET 3 OF 6 SHEETS STA. TO STA.

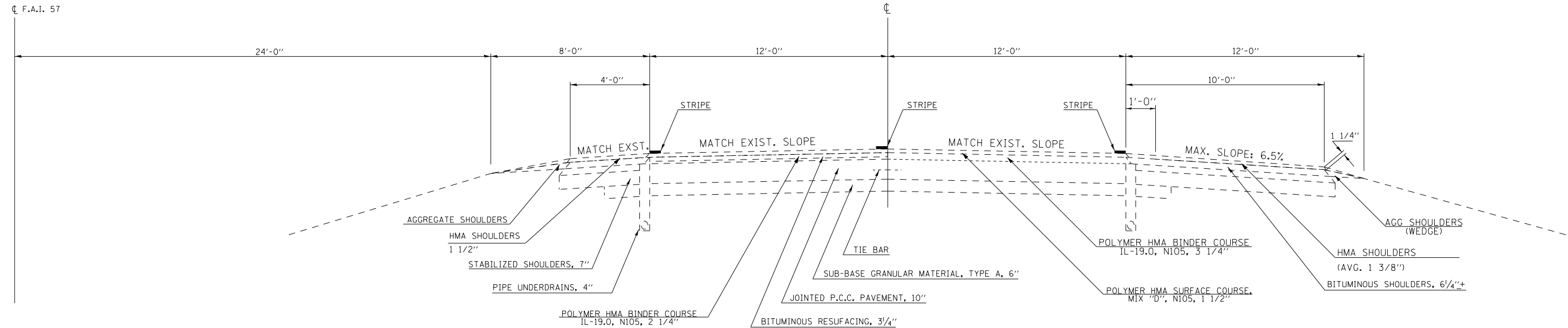
F.A. RTE.	SECTION	COUNTY	TOTAL SHEETS	SHEET NO.
VAR.	D5 CM PATCH 2022-1	-	15	8
CONTRACT NO. 70F58				
ILLINOIS FED. AID PROJECT				

CHAMPAIGN & DOUGLAS

7 EXISTING TYPICAL SECTION

STATION TO STATION
 ⑤ 104+50.00 AH 347+00.00 ⑧

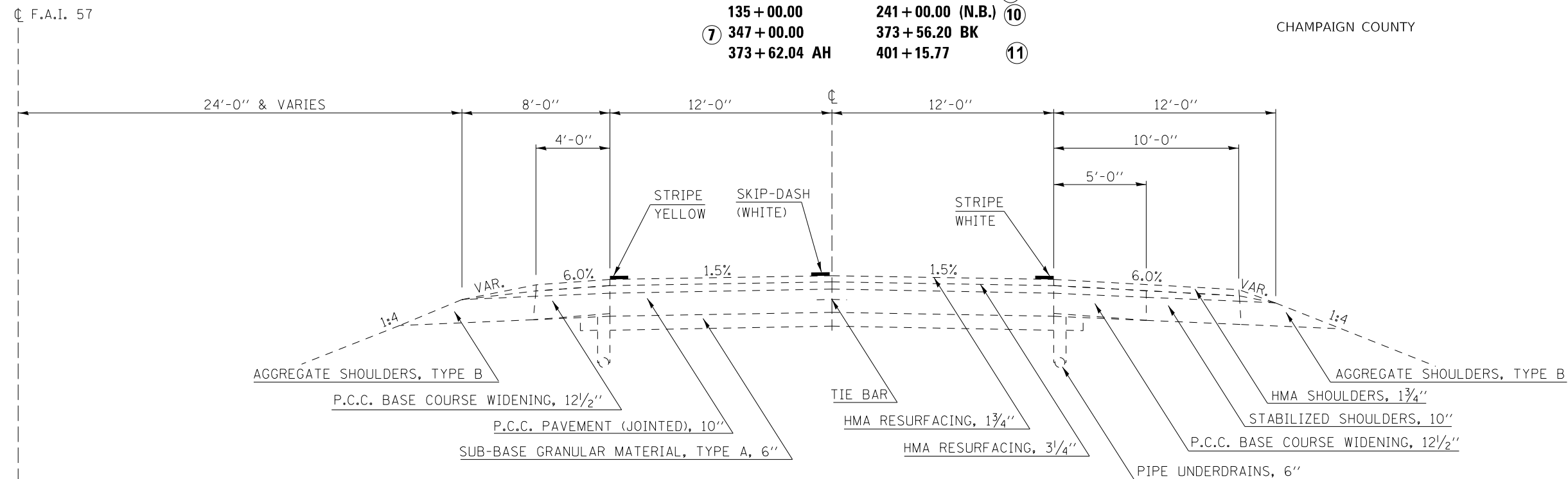
CHAMPAIGN COUNTY



8 EXISTING TYPICAL SECTION

STATION TO STATION
 350+00.00 526+63.25 BK
 83+43.82 AH 135+00.00 ⑨
 135+00.00 241+00.00 (N.B.) ⑩
 ⑦ 347+00.00 373+56.20 BK
 373+62.04 AH 401+15.77 ⑪

CHAMPAIGN COUNTY



MODEL: I:\MODEL\MAME
 FILE: NAME: P:\Public\paw_bentley.com\P\INDOT\Documents\DOT Office\Drawings\Projects\0570558\champs\Typical.dgn

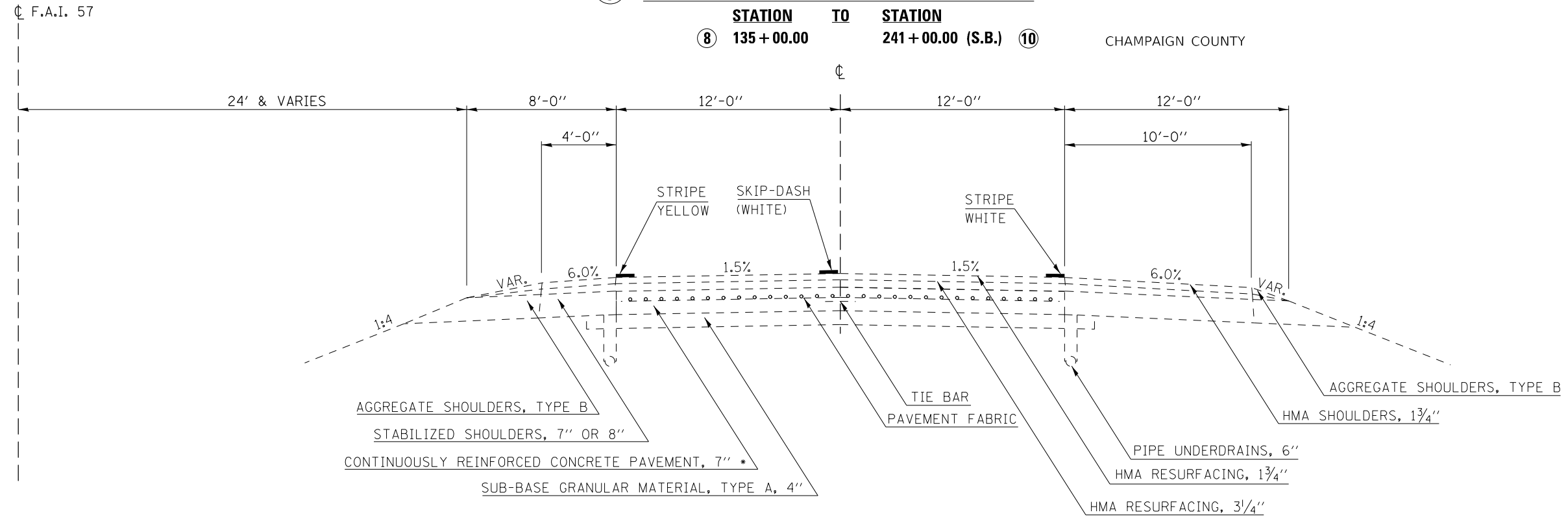
USER NAME = goblejr	DESIGNED - JRG	REVISED -
	DRAWN - JRG	REVISED -
PLOT SCALE = 40,0000 * / in.	CHECKED -	REVISED -
PLOT DATE = 12/16/2021	DATE -	REVISED -

**STATE OF ILLINOIS
 DEPARTMENT OF TRANSPORTATION**

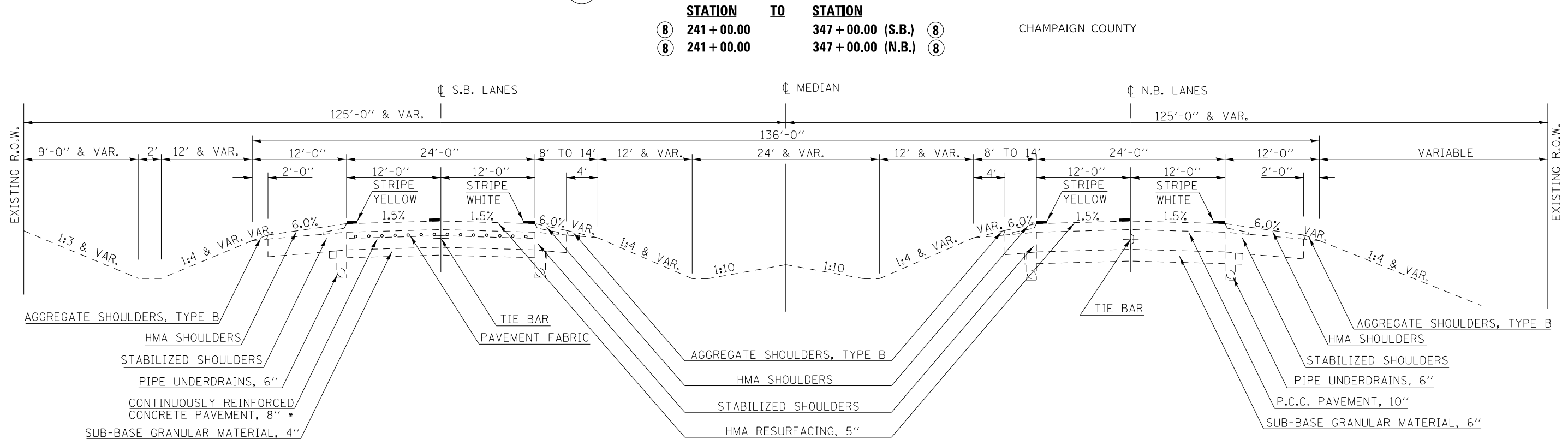
TYPICAL CROSS SECTIONS			
SCALE: NTS	SHEET 4	OF 6 SHEETS	STA. TO STA.

F.A. RTE.	SECTION	COUNTY	TOTAL SHEETS	SHEET NO.
VAR.	D5 CM PATCH 2022-1	-	15	9
CONTRACT NO. 70F58				
ILLINOIS FED. AID PROJECT				

9 EXISTING TYPICAL SECTION



10 EXISTING TYPICAL SECTION



*NOTE:
STA. 241+00.00 TO STA. 347+00.00 - CRC PAVEMENT, 8 INCHES

USER NAME = g01lejr	DESIGNED -	REVISED -
	DRAWN -	REVISED -
PLOT SCALE = 40,0000 * / in.	CHECKED -	REVISED -
PLOT DATE = 12/16/2021	DATE -	REVISED -

STATE OF ILLINOIS
DEPARTMENT OF TRANSPORTATION

TYPICAL CROSS SECTIONS

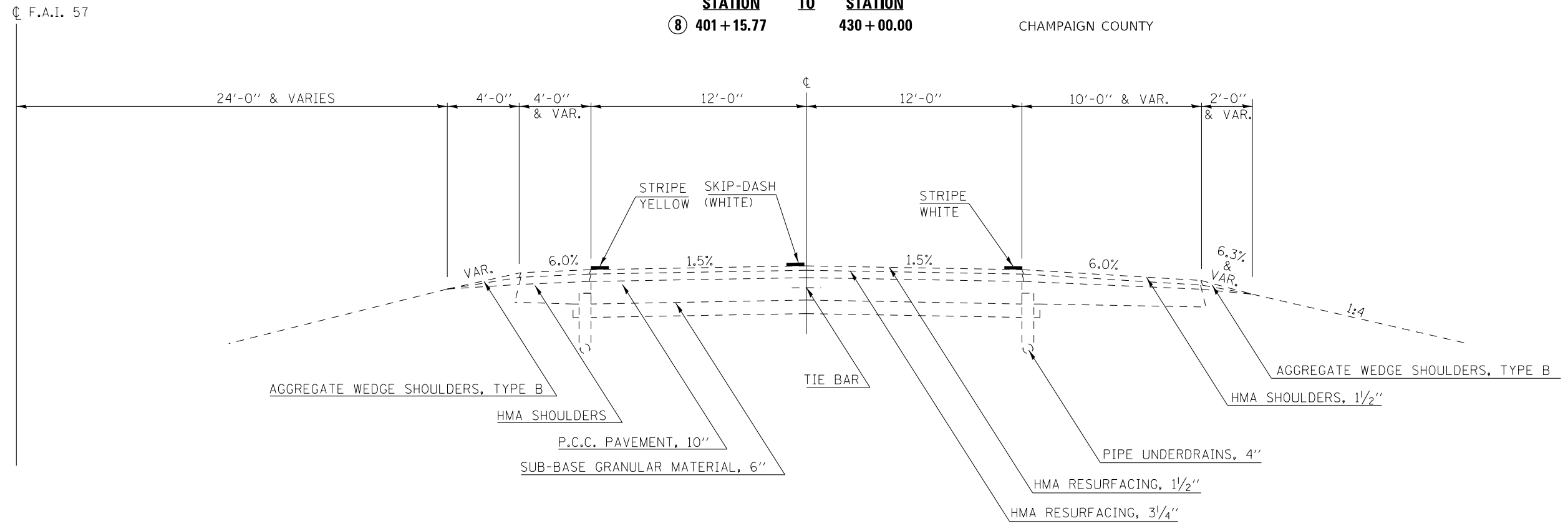
SCALE: SHEET 5 OF 6 SHEETS STA. TO STA.

F.A. RTE.	SECTION	COUNTY	TOTAL SHEETS	SHEET NO.
VAR.	D5 CM PATCH 2022-1	-	15	10
CONTRACT NO. 70F58			ILLINOIS FED. AID PROJECT	

11 EXISTING TYPICAL SECTION

STATION TO STATION
 ⑧ 401+15.77 430+00.00

CHAMPAIGN COUNTY



MODEL: \\MODEL\MNMF
 FILE: \\MAILS_P\public\paw_bentley.com\PIV\DOT\Documents\DOT_Offices\Dir\dr: S\Project\0570F58\CADD\data\CAD\sheet\0570F58.dgn

USER NAME = g01lejr	DESIGNED - JRG	REVISED -
	DRAWN - JRG	REVISED -
PLOT SCALE = 40,0000 * / in.	CHECKED -	REVISED -
PLOT DATE = 12/16/2021	DATE -	REVISED -

**STATE OF ILLINOIS
 DEPARTMENT OF TRANSPORTATION**

TYPICAL CROSS SECTIONS

SCALE: SHEET 6 OF 6 SHEETS STA. TO STA.

F.A. RTE.	SECTION	COUNTY	TOTAL SHEETS	SHEET NO.
VAR.	D5 CM PATCH 2022-1	-	15	11
CONTRACT NO. 70F58			ILLINOIS FED. AID PROJECT	

CHAMPAIGN & DOUGLAS

PATCHING SCHEDULE:

STATION	LANE	DIRECTION	MILEPOST	LENGTH (FOOT)	WIDTH (FOOT)	X4420621	X4420624	X4420628	44213200	44213204	44213204	44213000
						CLASS A TYPE II, 14" (SQ YD)	CLASS A TYPE III, 14" (SQ YD)	CLASS A TYPE IV, 14" (SQ YD)	SAW CUTS (FOOT)	TIE BARS (TRANS) (EACH)	TIE BARS (LONG) (EACH)	PATCHING REINFORCEMENT (SQ YD)
FAI 57												
DOUGLAS COUNTY												
1494+00	DRIVING	NB	203.4743	8	12	10.7			40.0	22		10.7
1494+00	PASSING	NB	203.4799	20	12			26.7	64.0	22	7	26.7
148+93	DRIVING	NB	204.3992	8	12	10.7			40.0	22		10.7
149+00	DRIVING	NB	204.4109	12	12		16.0		48.0	22		16.0
149+57	PASSING	NB	204.4403	12	12		16.0		48.0	22		16.0
150+21	PASSING	NB	204.4632	12	12		16.0		48.0	22		16.0
150+69	DRIVING	NB	204.4724	20	12			26.7	64.0	22	7	26.7
150+72	DRIVING	SB	204.4324	25	12			33.3	74.0	22	8	33.3
150+72	PASSING	SB	204.4324	25	12			33.3	74.0	22	8	33.3
150+98	PASSING	SB	204.4374	20	12			26.7	64.0	22	7	26.7
152+71	DRIVING	SB	204.4891	15	12		20.0		54.0	22		20.0
153+90	PASSING	SB	204.4927	20	12			26.7	64.0	22	7	26.7
					SUBTOTAL 1 =	21.4	68.0	173.4	682.0	264.0	44.0	262.8
					USE =	22.0	68.0	174.0	682.0	264.0	44.0	263.0
CHAMPAIGN COUNTY												
119+68	DRIVING	NB	219.7737	6	12	8.0			36.0	22		8.0
119+68	PASSING	NB	219.7737	6	12	8.0			36.0	22		8.0
149+02	DRIVING	NB	220.3273	6	12	8.0			36.0	22		8.0
149+02	PASSING	NB	220.3273	6	12	8.0			36.0	22		8.0
172+01	DRIVING	NB	220.7628	6	12	8.0			36.0	22		8.0
172+01	PASSING	NB	220.7628	6	12	8.0			36.0	22		8.0
173+00	DRIVING	NB	220.7815	6	12	8.0			36.0	22		8.0
173+00	PASSING	NB	220.7815	6	12	8.0			36.0	22		8.0
134+00	DRIVING	SB	220.1999	6	12	8.0			36.0	22		8.0
144+74	DRIVING	SB	220.4033	6	12	8.0			36.0	22		8.0
150+24	PASSING	SB	220.5074	6	12	8.0			36.0	22		8.0
150+24	DRIVING	SB	220.5074	6	12	8.0			36.0	22		8.0
156+67	DRIVING	SB	220.6292	8	12	10.7			40.0	22		10.7
164+10	DRIVING	SB	220.7699	25	12			33.3	74.0	22	8	33.3
170+73	DRIVING	SB	220.8955	8	12	10.7			40.0	22		10.7
193+00	DRIVING	SB	221.1444	8	12	10.7			40.0	22		10.7
430+00	DRIVING	SB	234.1141	60	6			40.0	132.0	10	20	40.0
					SUBTOTAL 2 =	128.1	0.0	73.3	758.0	362	28	201.4
					USE =	128.0	0.0	74.0	758.0	362	28	202.0
					FAI 57 TOTAL =	150.0	68.0	248.0	1440.0	626	72	465.0
					USE =	150.0	68.0	248.0	1440.0	626	72	465.0
						SQ YD	SQ YD	SQ YD	FOOT	EACH	EACH	SQ YD

MODEL: \\MODEL\MAF5
 FILE: \\MAF5_Plan\Bids\paw_bentley.com\FW\DOT\Documents\DOT_Offices\Dir\dr: 5\Project\057058\CAD\data\CAD\sheet\057058\paw_Schedule.dgn

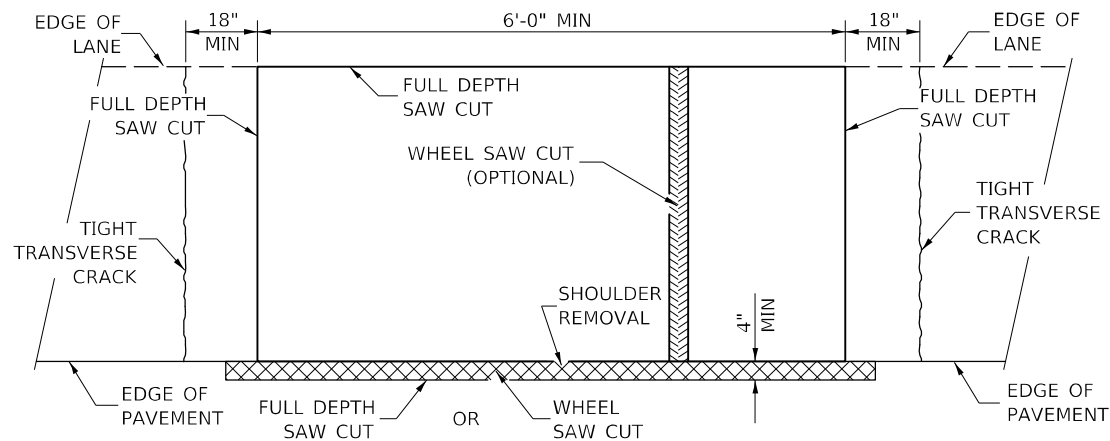
USER NAME = g0t0eJr	DESIGNED - JRG	REVISED -
	DRAWN - JRG	REVISED -
PLOT SCALE = 40,0000 * / in.	CHECKED -	REVISED -
PLOT DATE = 12/16/2021	DATE -	REVISED -

**STATE OF ILLINOIS
DEPARTMENT OF TRANSPORTATION**

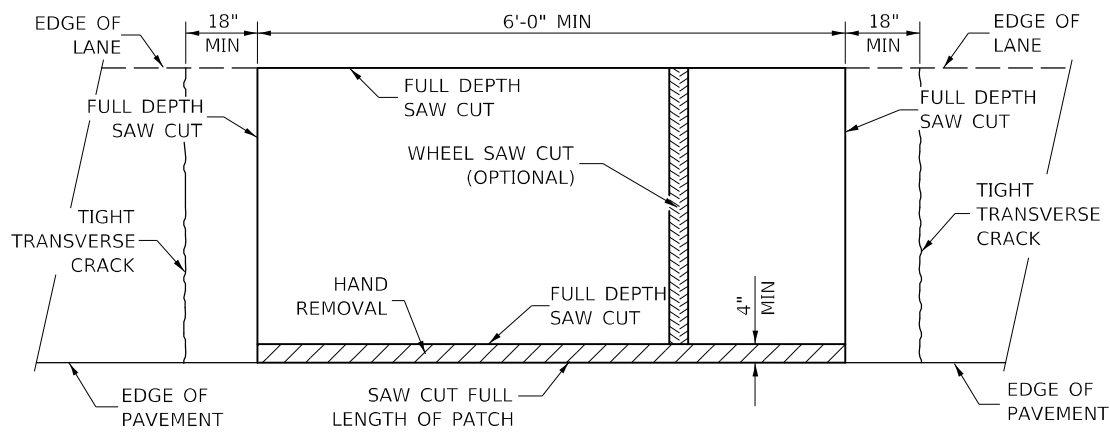
SCHEDULE OF QUANTITIES

SCALE: NTS SHEET 1 OF 1 SHEETS STA. TO STA.

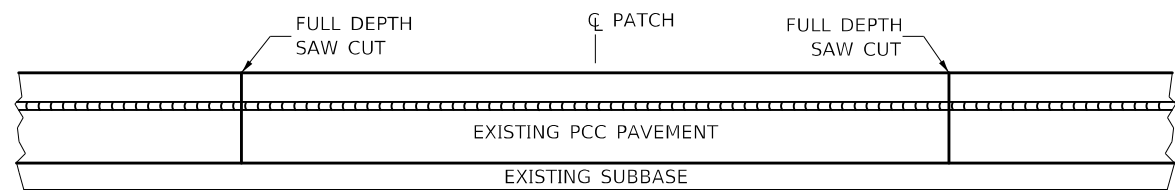
F.A. RTE.	SECTION	COUNTY	TOTAL SHEETS	SHEET NO.
VAR.	D5 CM PATCH 2022-1	*	15	12
			CONTRACT NO. 70F58	
		ILLINOIS FED. AID PROJECT		



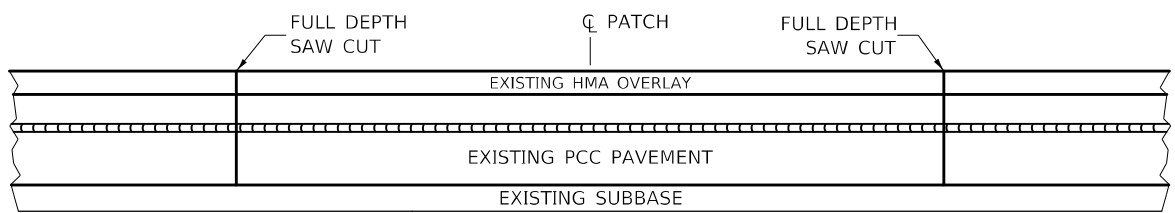
**PAVEMENT SAWING DETAIL
(HMA SHOULDER)**



**PAVEMENT SAWING DETAIL
(PCC SHOULDER)**

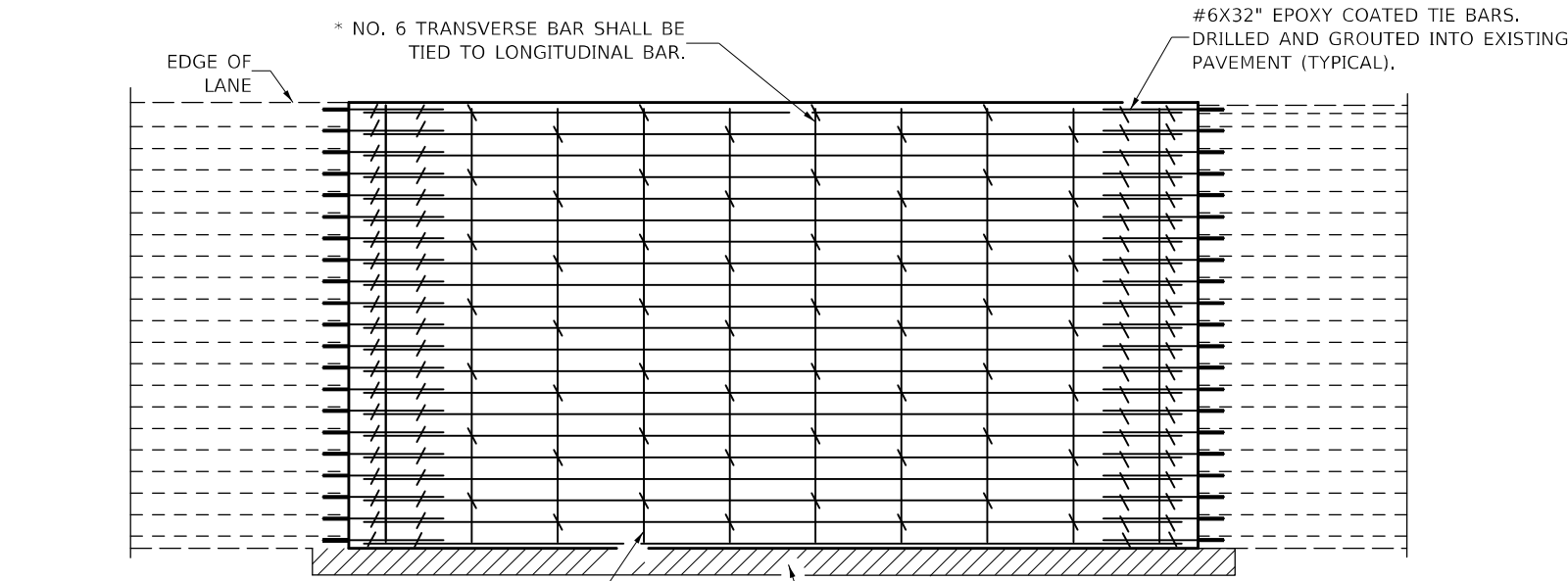


EXISTING PAVEMENT WITHOUT HMA SURFACE

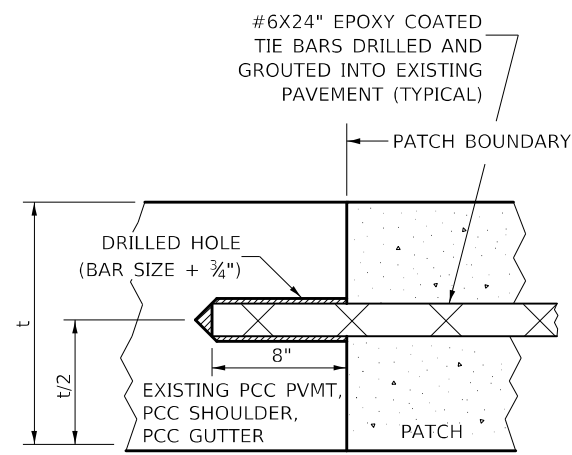


EXISTING PAVEMENT WITH HMA SURFACE

**PAVEMENT SAWING DETAIL FOR CLASS A PATCHING
(CRC PAVEMENT)**



PAVEMENT REINFORCEMENT DETAIL



LONGITUDINAL CONSTRUCTION JOINT

PATCHES MORE THAN 20' IN LENGTH SHALL BE TIED TO ADJACENT PAVEMENT, PCC SHOULDERS OR PCC CURB AND GUTTER WITH #6x24" EPOXY COATED TIE BARS AT 24" CENTERS.

NOTES:

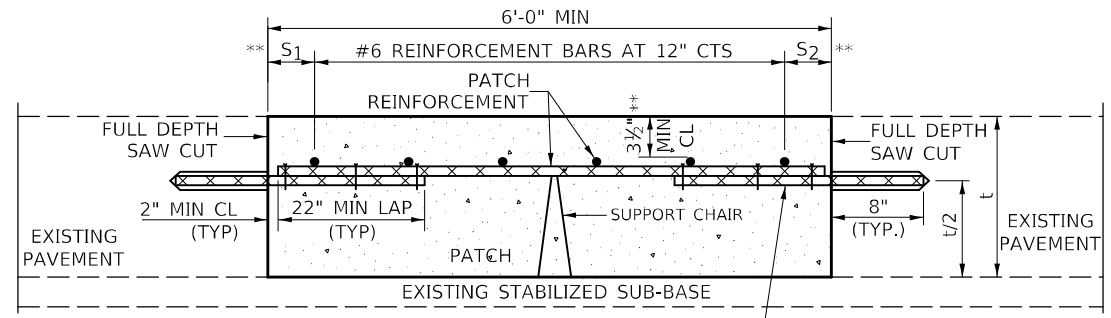
EXISTING LONGITUDINAL REINFORCEMENT SPACING; $\pm 6\frac{1}{2}$ ".

SPACING OF NEW LONGITUDINAL REINFORCEMENT AND NEW LONGITUDINAL TIE BARS SHALL MATCH SPACING OF EXISTING REINFORCEMENT AND SHALL BE TIED TOGETHER WITH A MINIMUM OF TWO TIES PER BAR.

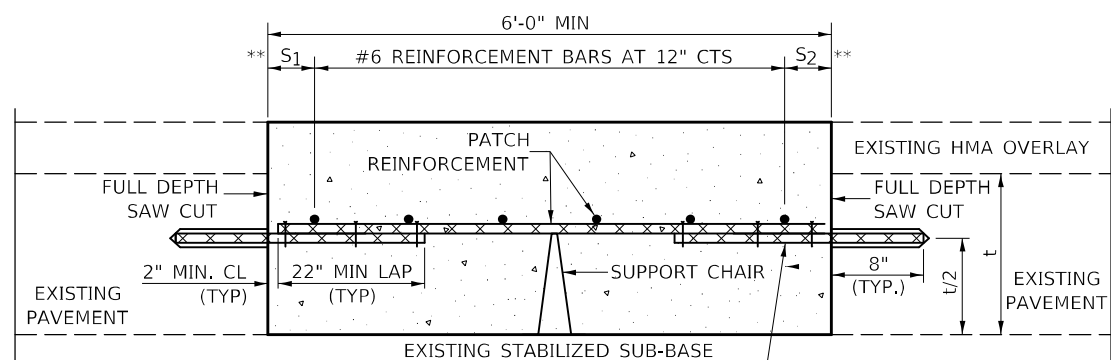
SUPPORT CHAIRS SHALL BE REQUIRED WHENEVER PATCH LENGTH EXCEEDS 6'-0"

* EVERY THIRD INTERSECTION MUST BE TIED. WHEN THE MINIMUM CLEARANCE CANNOT BE OBTAINED WITH THE TRANSVERSE REBAR ON TOP, THEN THE TRANSVERSE REBAR SHALL BE TIED TO THE BOTTOM OF THE LONGITUDINAL REBAR.

** VARIABLES WHERE S_1 AND S_2 ARE $2\frac{1}{2}$ " MIN. AND 12" MAX.



WITHOUT HMA OVERLAY



WITH HMA OVERLAY

**PATCHING DETAIL FOR CLASS A PATCHING
(CRC PAVEMENT)**

MODEL: I:\MODEL\NAME FILE NAME: ...

USER NAME = g01lejr	DESIGNED -	REVISED -
DRAWN -	REVISOR -	REVISOR -
PLOT SCALE = 40,0000 * / in.	CHECKED -	REVISOR -
PLOT DATE = 12/16/2021	DATE -	REVISOR -

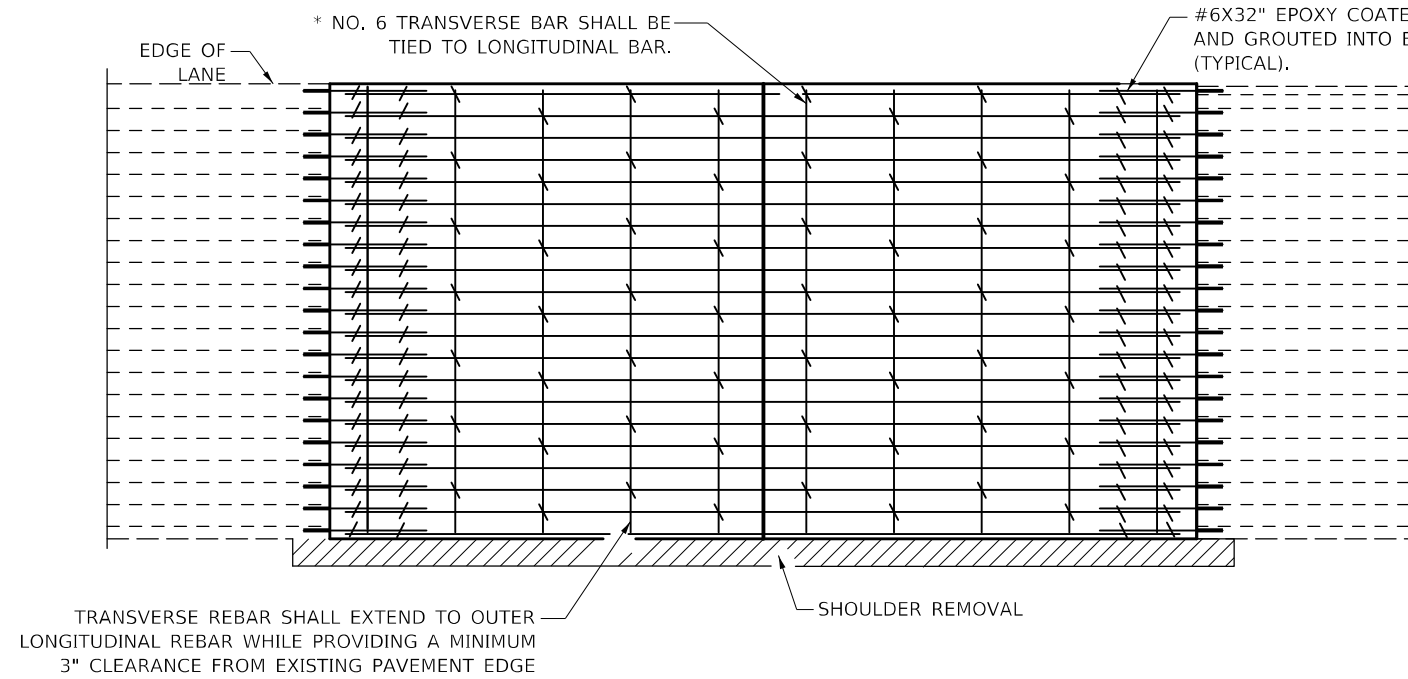
**STATE OF ILLINOIS
DEPARTMENT OF TRANSPORTATION**

CLASS A PATCHING (SPECIAL)

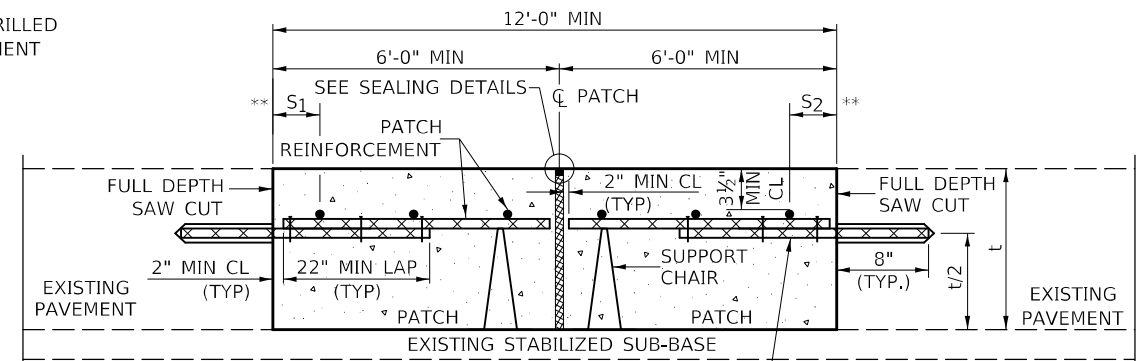
SCALE: NONE SHEET 1 OF 2 SHEETS STA. TO STA.

F.A. RTE.	SECTION	COUNTY	TOTAL SHEETS	SHEET NO.
VAR.	D5 CM PATCH 2022-1		15	13
CONTRACT NO. 70F58			ILLINOIS FED. AID PROJECT	

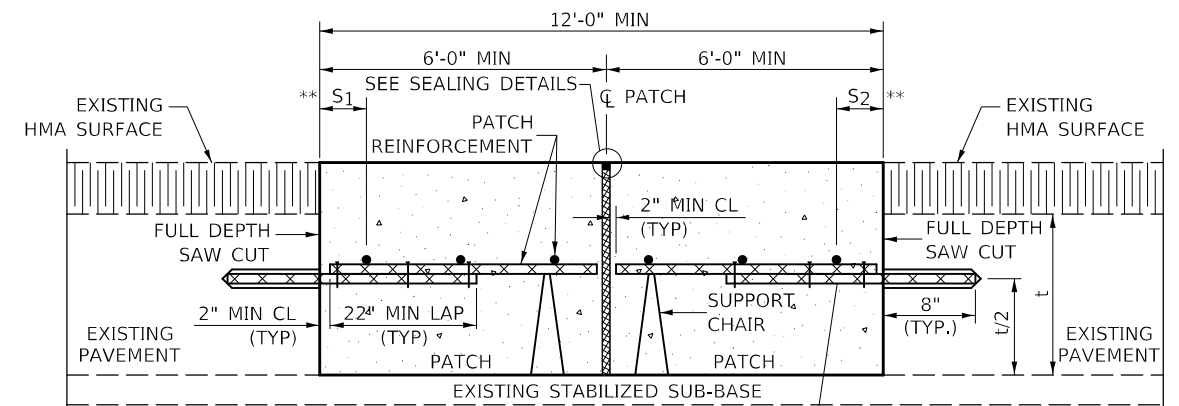
CHAMPAIGN & DOUGLAS



PAVEMENT REINFORCEMENT DETAIL

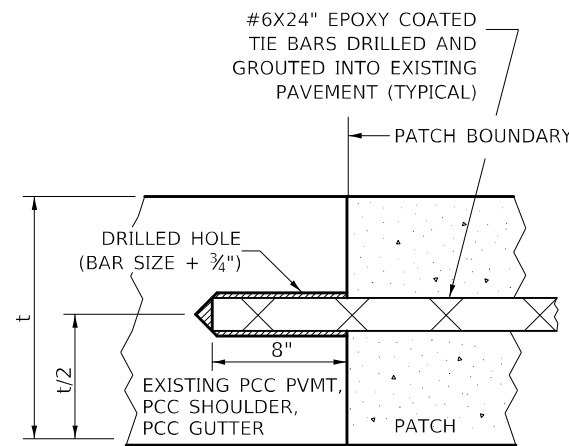


WITHOUT HMA OVERLAY



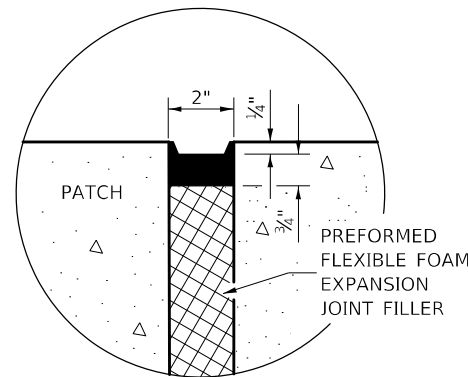
WITH HMA OVERLAY

CLASS A PATCH WITH EXPANSION JOINT

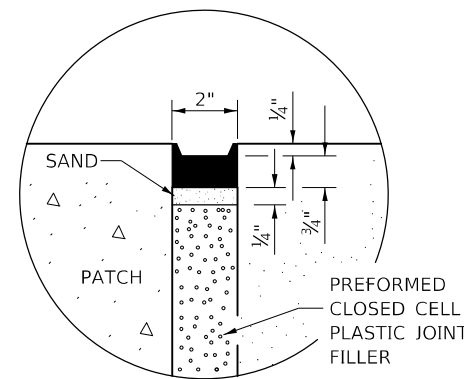


LONGITUDINAL CONSTRUCTION JOINT

PATCHES MORE THAN 20' IN LENGTH SHALL BE TIED TO ADJACENT PAVEMENT, PCC SHOULDERS OR PCC CURB AND GUTTER WITH #6x24" EPOXY COATED TIE BARS AT 36" CENTERS.



SEALING DETAIL



SEALING DETAIL

NOTES:

EXISTING LONGITUDINAL REINFORCEMENT SPACING; $\pm 6\frac{1}{2}$ ".

SPACING OF NEW LONGITUDINAL REINFORCEMENT AND NEW LONGITUDINAL TIE BARS SHALL MATCH SPACING OF EXISTING REINFORCEMENT AND SHALL BE TIED TOGETHER WITH A MINIMUM OF TWO TIES PER BAR.

SUPPORT CHAIRS SHALL BE REQUIRED WHENEVER PATCH LENGTH EXCEEDS 6'-0"

* EVERY THIRD INTERSECTION MUST BE TIED, WHEN THE MINIMUM CLEARANCE CANNOT BE OBTAINED WITH THE TRANSVERSE REBAR ON TOP, THEN THE TRANSVERSE REBAR SHALL BE TIED TO THE BOTTOM OF THE LONGITUDINAL REBAR.

** VARIABLES WHERE S_1 AND S_2 ARE $2\frac{1}{2}$ " MIN. AND 12" MAX.

MODEL: I:\MODEL\MHFE... FILE NAME: ...

USER NAME = g01lejr	DESIGNED -	REVISED -
	DRAWN -	REVISED -
PLOT SCALE = 40,0000 */ in.	CHECKED -	REVISED -
PLOT DATE = 12/16/2021	DATE -	REVISED -

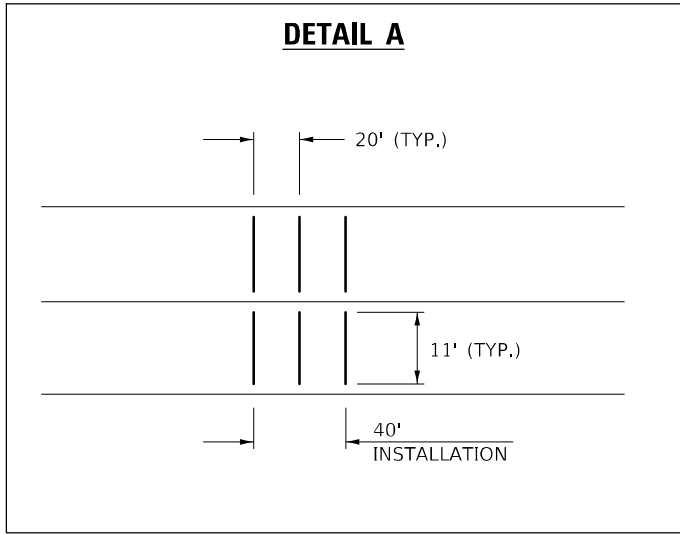
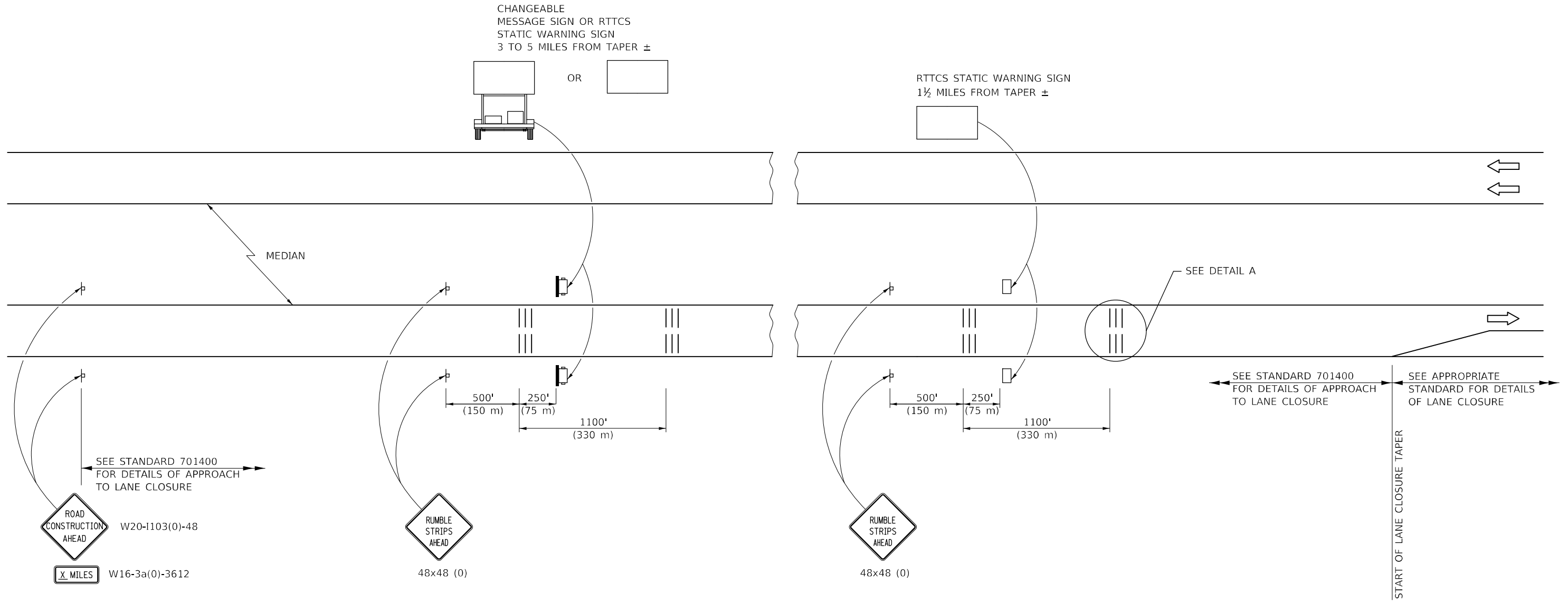
STATE OF ILLINOIS
DEPARTMENT OF TRANSPORTATION

CLASS A PATCHING (SPECIAL)

SCALE: NONE SHEET 2 OF 2 SHEETS STA. TO STA.

F.A. RTE.	SECTION	COUNTY	TOTAL SHEETS	SHEET NO.
VAR.	D5 CM PATCH 2022-1		15	14
CONTRACT NO. 70F58			ILLINOIS FED. AID PROJECT	

DETAIL FOR TEMPORARY RUMBLE STRIPS (SPECIAL)



SYMBOLS

- ⊞ SIGN
- ||| TEMPORARY RUMBLE STRIPS (SPECIAL)
- ⊞ TRAILER MOUNTED SIGN
- RTTCS STATIC WARNING SIGN

GENERAL NOTES

REMOVE THE TEMPORARY RUMBLE STRIPS (SPECIAL) PRIOR TO THE REMOVAL OF THE ADVANCED WARNING SIGNS.

ALL DIMENSIONS ARE IN INCHES (MILLIMETERS) UNLESS OTHERWISE SHOWN.

MODEL: I:\MODEL\NAMES FILE: NAME: P:\Public\paw_bentley.com\P\DOT\Documents\DOT Office\Drawings\Project\057058\CADD\Drawings\057058\Sheet\Detail.dgn

USER NAME = goblejr	DESIGNED -	REVISED -
PLOT SCALE = 40,0000 * / in.	DRAWN -	REVISED -
PLOT DATE = 12/16/2021	CHECKED -	REVISED -
	DATE -	REVISED -

STATE OF ILLINOIS
DEPARTMENT OF TRANSPORTATION

DETAIL FOR TEMPORARY RUMBLE STRIPS (SPECIAL)			
SCALE: NONE	SHEET 1	OF 1 SHEETS	STA. TO STA.

F.A. RTE.	SECTION	COUNTY	TOTAL SHEETS	SHEET NO.
VAR.	D5 CM PATCH 2022-1	*	15	15
CONTRACT NO. 70F58				
ILLINOIS FED. AID PROJECT				

* CHAMPAIGN & DOUGLAS