

STATE OF ILLINOIS  
DEPARTMENT OF TRANSPORTATION

F.A. RTE.	SECTION	COUNTY	TOTAL SHEETS	SHEET NO.
**	CM22-5015	*	18	1
* DEWITT & MCLEAN		ILLINOIS	CONTRACT NO. 70F67	
** F.A.I. 55 F.A.U. 6406 F.A.P. 708				

FOR INDEX OF SHEETS, SEE SHEET NO. 2  
FOR SUMMARY OF QUANTITIES, SEE SHEET NO. 5 & 6

# PROPOSED HIGHWAY PLANS

FAI ROUTE 55 (1-55), FAU 6406 (US 150), & FAP 708 (US 51 BUSN)  
SECTION D5 CM PATCH 2022-5  
PATCHING

MCLEAN & DEWITT COUNTY

C-95-028-22

FOR LOCATIONS, SEE SHEET 3 & 4

**TRAFFIC DATA**

	Leg "A"			Leg "B"			Leg "C"		
	I-55 (FAI 55)			US 150 (FAU 6406)			US 51 BUS (FAP 708)		
2022 ADT	=	24696		12239		3333			
P.U. & P.C.%	=	69.25		93.97		96.72			
SU%	=	3.32		4.0		1.97			
MU%	=	27.43		2.01		1.31			
Truck Rte. Class	=	Class I		Class IV		Class III			
N.H.S. Route	=	Yes		No		Yes			

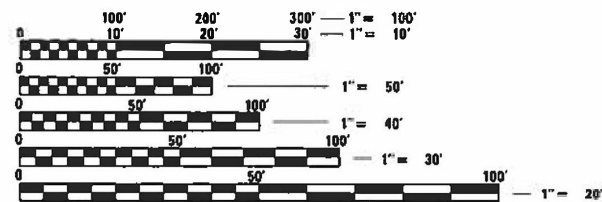
Leg "A" is I-55 from I-55/I-74 split to just south of Shirley in McLean County.  
Leg "B" is US 150 from Veteran's Pkwy to just south of Woodrig Rd in McLean County, SE of Bloomington.  
Leg "C" is US 51 BUS from US 51 to 0.3 mile south of US 51 in Dewitt County, N of Clinton.

**DESIGN DESIGNATION**

I-55: INTERSTATE  
US 150: MINOR ARTERIAL  
US 51 BUSN: OTHER PRINCIPAL ARTERIAL

**TOWNSHIP**

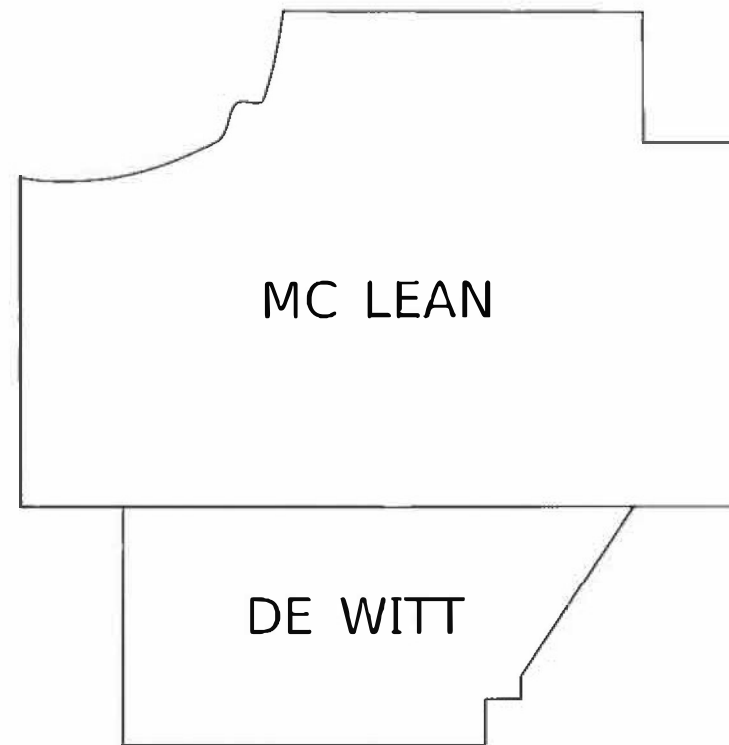
I-55: BLOOMINGTON, SHIRLEY  
US 150: BLOOMINGTON  
US 51 BUSN: CLINTON



FULL SIZE PLANS HAVE BEEN PREPARED USING STANDARD ENGINEERING SCALES. REDUCED SIZED PLANS WILL NOT CONFORM TO STANDARD SCALES. IN MAKING MEASUREMENTS ON REDUCED PLANS, THE ABOVE SCALES MAY BE USED.

J.U.L.I.E.  
JOINT UTILITY LOCATION INFORMATION FOR EXCAVATORS  
1-800-892-0123  
OR 811

PROJECT ENGINEER: JASON STULTS, P.E.  
PROJECT MANAGER: XINYU SUN, P.E.  
PHONE NUMBER: (217) 465-4181  
CONTRACT NO. 70F67



GROSS LENGTH = 34,627.00 FT. = 6.558 MILE  
NET LENGTH = 34,627.00 FT. = 6.558 MILE

D-95-011-22



STATE OF ILLINOIS  
DEPARTMENT OF TRANSPORTATION

SUBMITTED 12/16/2021  
Kensil A. Barnett, Sr.  
REGIONAL ENGINEER  
February 4, 2022  
[Signature]  
ENGINEER OF DESIGN AND ENVIRONMENT  
February 4, 2022  
Stephen M. Smith  
DIRECTOR OF HIGHWAYS PROJECT IMPLEMENTATION

PRINTED BY THE AUTHORITY  
OF THE STATE OF ILLINOIS

INDEX OF SHEETS

SHEET NO.	DESCRIPTION
1	COVER SHEET
2	INDEX OF SHEETS
2	LIST OF HIGHWAY STANDARDS
2	GENERAL NOTES
3-4	LOCATION MAPS
5-6	SUMMARY OF QUANTITIES
7-12	TYPICAL CROSS SECTION
13-16	SCHEDULE OF QUANTITIES
17-18	CLASS A PATCH (SPECIAL)

GENERAL NOTES

NONE

COMMITMENTS

THERE ARE NO COMMITMENTS FOR THIS PROJECT

LIST OF HIGHWAY STANDARDS

STANDARD NO.	DESCRIPTION
000001-08	STANDARDS SYMBOLS, ABBREVIATIONS, & PATTERNS
001001-02	AREAS OF REINFORCEMENT BARS
001006	DECIMAL OF AN INCH AND OF A FOOT
420001-10	PAVEMENT JOINTS
420701-03	PAVEMENT WELDED WIRE REINFORCEMENT
442101-09	CLASS B PATCHES
606001-08	CONCRETE CURB TYPE B AND COMBINATION CONCRETE CURB AND GUTTER
701001-02	OFF ROAD OPERATIONS, 2L, 2W, MORE THAN 15' AWAY
701006-05	OFF ROAD OPERATIONS, 2L, 2W, 15' TO 24" FROM PAVEMENT EDGE
701201-05	LANE CLOSURE 2L, 2W - DAY ONLY
701301-04	LANE CLOSURE 2L, 2W - SHORT TIME OPERATION
701400-11	APPROACH TO LANE CLOSURE - FREEWAY/EXPRESSWAY
701401-13	LANE CLOSURE - FREEWAY/EXPRESSWAY
701411-09	LANE CLOSURES MULTI LANE - ENTRANCE OR EXIT RAMP 45 MPH OR MORE
701602-10	URBAN LANE CLOSURE MUTI LANE 2W WITH BIDIRECTIONAL LEFT TURN LANE
701901-08	TRAFFIC CONTROL DEVICES

MODEL: \\MODELNAME\$ FILE: \\NAME\$.prn \\SERVER\Bentley.com\PROJECTS\057067\CADD\DATA\CAD\Sheets\057067.sht-CenNore

USER NAME = sunx	DESIGNED -	REVISED -
	DRAWN -	REVISED -
PLOT SCALE = 40.0000 ' / in.	CHECKED -	REVISED -
PLOT DATE = 12/16/2021	DATE -	REVISED -

**STATE OF ILLINOIS  
DEPARTMENT OF TRANSPORTATION**

**INDEX OF SHEETS, LIST OF  
HIGHWAY STANDARDS & GENERAL NOTES**

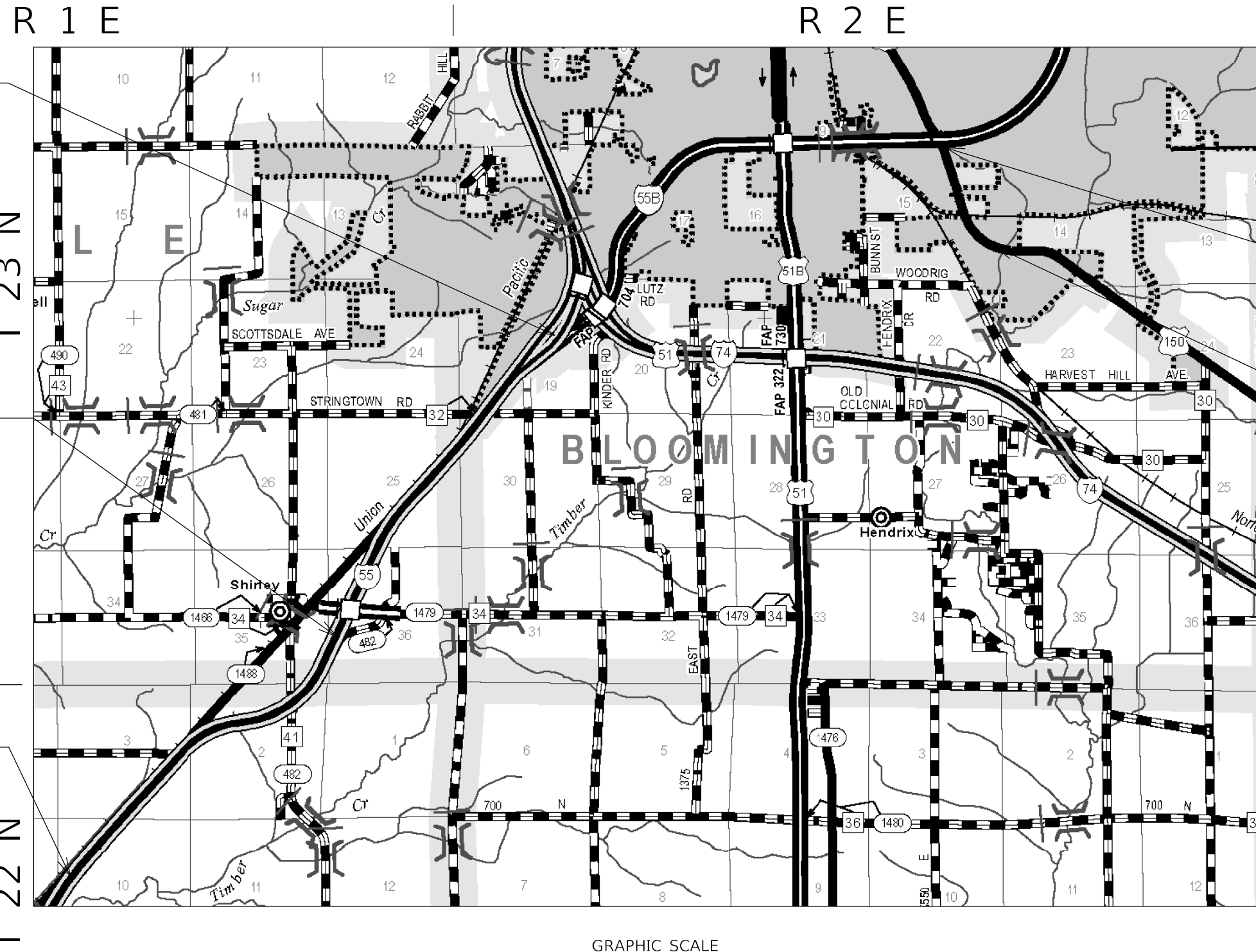
SCALE: SHEET 1 OF 1 SHEETS STA. TO STA.

F.A.** RTE.	SECTION	COUNTY	TOTAL SHEETS	SHEET NO.
**	CM22-5015	*	18	2
* CHAMPAIGN & VERMILION		CONTRACT NO. 70F67		
ILLINOIS FED. AID PROJECT				

\*\* F.A.I. 55; F.A.U. 6406; F.A.P. 708

REV. 1/24/22

# MCLEAN COUNTY



I 55  
SECTION ENDS  
659 + 50

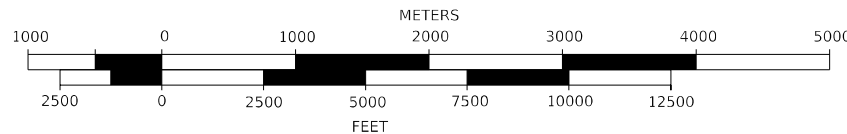
I 55  
URBAN LIMIT BEGINS  
500 + 76

I 55  
SECTION BEGINS  
376 + 50

US 150  
SECTION BEGINS  
58 + 55

US 150  
SECTION ENDS  
107 + 20

GRAPHIC SCALE



PROJECT LENGTH ON I-55: 5.35 MILE

PROJECT LENGTH ON US 150: 0.92 MILE

MODEL: I:\MODELS\MF\... FILE: NAME: ...

USER NAME = suix	DESIGNED -	REVISED -
	DRAWN -	REVISED -
PLOT SCALE = 40,0000 */ in.	CHECKED -	REVISED -
PLOT DATE = 12/16/2021	DATE -	REVISED -

STATE OF ILLINOIS  
DEPARTMENT OF TRANSPORTATION

LOCATION MAPS

SCALE: SHEET 1 OF 2 SHEETS STA. TO STA.

F.A. RTE.	SECTION	COUNTY	TOTAL SHEETS	SHEET NO.
**	CM22-5015	*	18	3
* MCLEAN & DEWITT			CONTRACT NO. 70F67	
ILLINOIS FED. AID PROJECT				

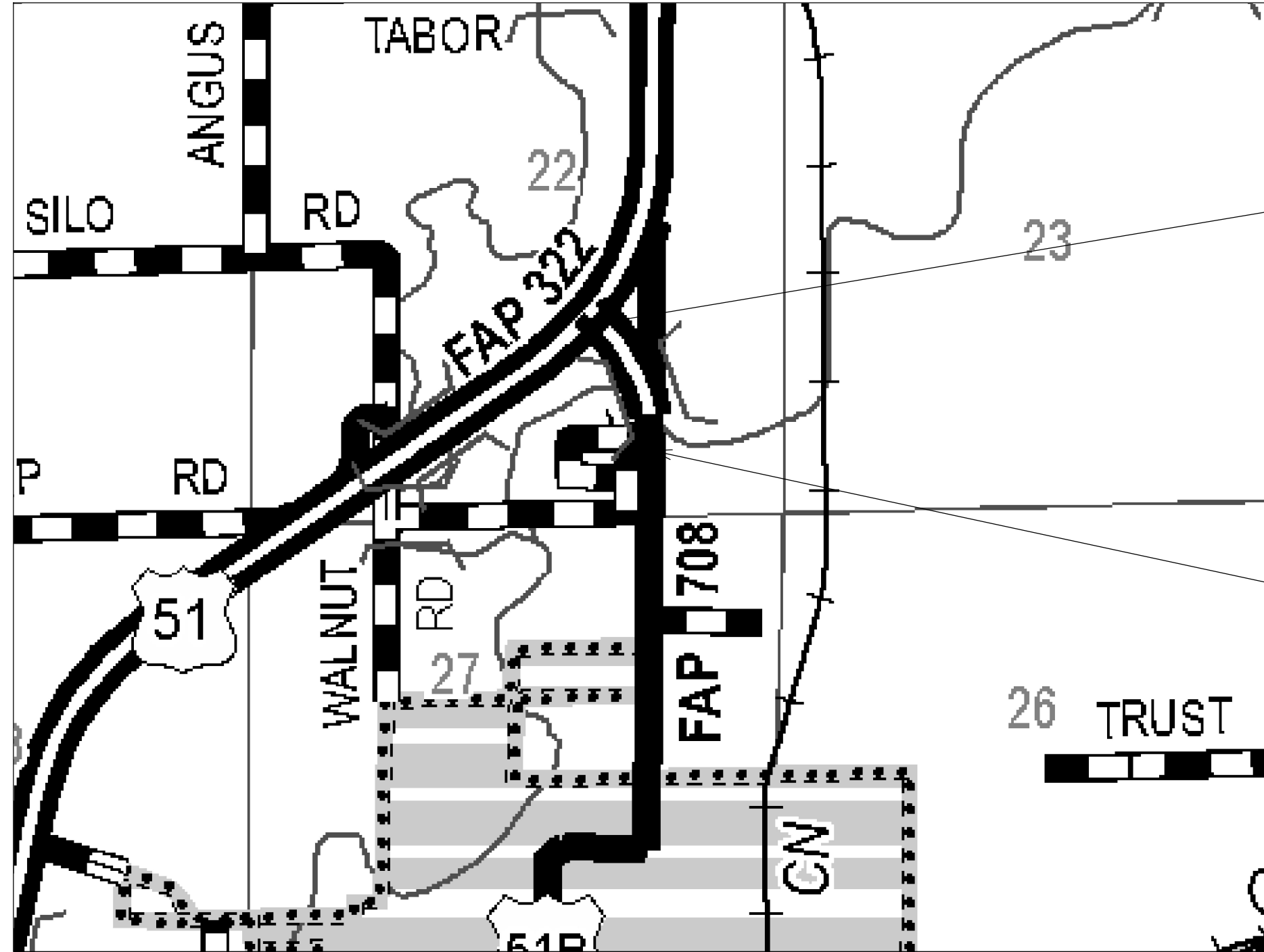
\*\* F.A.I. 57, F.A.U. 6406, F.A.P. 708

# DEWITT COUNTY



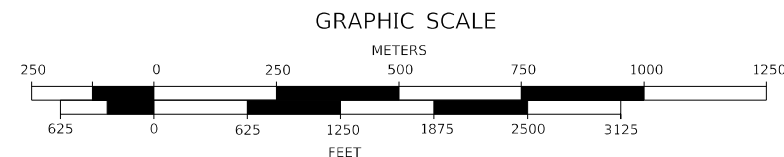
T 23 N

R 2 E



US 51 BUSN  
SECTION ENDS  
1749 + 37.88

US 51 BUSN  
SECTION BEGINS  
1734 + 76.15



PROJECT LENGTH ON US 150: 0.28 MILE

MODEL: \\MODEL\M\MS... FILE: \\MAILS... \Project\1057067\CAD\Drawings\CADsheets\1057067\24ht-loc2sb

USER NAME = sulx	DESIGNED -	REVISED -
	DRAWN -	REVISED -
PLOT SCALE = 40,0000 */ in.	CHECKED -	REVISED -
PLOT DATE = 12/16/2021	DATE -	REVISED -

STATE OF ILLINOIS  
DEPARTMENT OF TRANSPORTATION

LOCATION MAPS

SCALE: SHEET 2 OF 2 SHEETS STA. TO STA.

F.A.** RTE.	SECTION	COUNTY	TOTAL SHEETS	SHEET NO.
**	D5 CM PATCH 2020-4	*	18	4
* MCLEAN & DEWITT		CONTRACT NO. 70F67		
ILLINOIS FED. AID PROJECT				

\*\* F.A.I. 57, F.A.U. 6406, F.A.P. 708



# SUMMARY OF QUANTITIES

LOCATION OF WORK:	F.A.I. 55 (I-55)	F.A.I. 55 (I-55)	F.A.U. 6406 (US 150)	F.A.P. 708 (US 51 BUSN)
	URBAN	RURAL	URBAN	URBAN
	INTERSTATE	INTERSTATE	MINOR ARTERIAL	OTHER PRINCIPLE ARTERIAL
	STA. 500+76 TO STA. 659+50	STA. 376+50 TO STA. 500+76	STA. 58+55 TO STA. 107+20	STA. 1734+76 TO STA. 1749+38
	MCLEAN COUNTY	MCLEAN COUNTY	MCLEAN COUNTY	DEWITT COUNTY
FUNDING BREAKOUT:	100% STATE	100% STATE	100% STATE	100% STATE
CONSTRUCTION TYPE CODE:	0006	0006	0006	0006

CODE NO.	ITEM	UNIT	TOTAL QUANTITY	QUANTITY	QUANTITY	QUANTITY	QUANTITY
44000500	COMBINATION CURB AND GUTTER REMOVAL	FOOT	64.0	0.0	0.0	64.0	0.0
44200050	WELDED WIRE REINFORCEMENT	SQ YD	957.0	0.0	0.0	691.0	266.0
44200934	CLASS B PATCHES, TYPE II, 8 INCH	SQ YD	246.0	0.0	0.0	0.0	246.0
44200942	CLASS B PATCHES, TYPE III, 8 INCH	SQ YD	75.0	0.0	0.0	0.0	75.0
44200944	CLASS B PATCHES, TYPE IV, 8 INCH	SQ YD	191.0	0.0	0.0	0.0	191.0
44200956	CLASS B PATCHES, TYPE II, 9 INCH	SQ YD	441.0	0.0	0.0	441.0	0.0
44200964	CLASS B PATCHES, TYPE IV, 9 INCH	SQ YD	691.0	0.0	0.0	691.0	0.0
44201299	DOWEL BARS 1 1/2"	EACH	2048.0	0.0	0.0	1278.0	770.0
44213000	PATCHING REINFORCEMENT	SQ YD	135.0	83.0	52.0	0.0	0.0
44213200	SAW CUTS	FOOT	8396.0	413.0	264.0	5860.0	1859.0
44213204	TIE BARS 3/4"	EACH	1369.0	151.0	150.0	1036.0	32.0
60605000	COMBINATION CONCRETE CURB AND GUTTER, TYPE B-6.24	FOOT	64.0	0.0	0.0	64.0	0.0
67100100	MOBILIZATION	L SUM	1.0	0.2	0.2	0.4	0.2
* DENOTES SPECIALTY ITEM							

MODEL: I:\MODEL\NAME  
FILE: NAME.pxl  
USER: surnx  
DESIGNED -  
DRAWN -  
CHECKED -  
DATE -  
REVISED -  
REVISED -  
REVISED -  
REVISED -

USER NAME = surnx	DESIGNED -	REVISED -	
	DRAWN -	REVISED -	
PLOT SCALE = 40.0000 ' / in.	CHECKED -	REVISED -	
PLOT DATE = 12/16/2021	DATE -	REVISED -	

**STATE OF ILLINOIS  
DEPARTMENT OF TRANSPORTATION**

**SUMMARY OF QUANTITIES**

SCALE: SHEET 1 OF 2 SHEETS STA. TO STA.

F.A. RTE.	SECTION	COUNTY	TOTAL SHEETS	SHEET NO.
**	CM22-5015	*	18	5
* MCLEAN & DEWITT			CONTRACT NO. 70F67	
ILLINOIS FED. AID PROJECT				

\*\* F.A.I. 57, F.A.U. 6406, F.A.P. 708

# SUMMARY OF QUANTITIES

LOCATION OF WORK:	F.A.I. 55 (I-55)	F.A.I. 55 (I-55)	F.A.U. 6406 (US 150)	F.A.P. 708 (US 51 BUSN)
	URBAN	RURAL	URBAN	URBAN
	INTERSTATE	INTERSTATE	MINOR ARTERIAL	OTHER PRINCIPLE ARTERIAL
	STA. 500+76 TO STA. 659+50	STA. 376+50 TO STA. 500+76	STA. 58+55 TO STA. 107+20	STA. 1734+76 TO STA. 1749+38
	MCLEAN COUNTY	MCLEAN COUNTY	MCLEAN COUNTY	DEWITT COUNTY
FUNDING BREAKOUT:	100% STATE	100% STATE	100% STATE	100% STATE
CONSTRUCTION TYPE CODE:	0006	0006	0006	0006

CODE NO.	ITEM	UNIT	TOTAL QUANTITY	QUANTITY	QUANTITY	QUANTITY	QUANTITY
70100420	TRAFFIC CONTROL AND PROTECTION, STANDARD 701411	EACH	4.0	4.0	0.0	0.0	0.0
70100450	TRAFFIC CONTROL AND PROTECTION, STANDARD 701201	L SUM	1.0	0.0	0.0	0.0	1.0
70100800	TRAFFIC CONTROL AND PROTECTION, STANDARD 701401	L SUM	1.0	0.4	0.6	0.0	0.0
70102632	TRAFFIC CONTROL AND PROTECTION, STANDARD 701602	L SUM	1.0	0.0	0.0	1.0	0.0
70103815	TRAFFIC CONTROL SURVEILLANCE	CAL DAY	12.0	3.0	3.0	6.0	0.0
70107025	CHANGEABLE MESSAGE SIGN	CAL DAY	6.0	3.0	3.0	0.0	0.0
X1700052	CLASS A PATCHES, TYPE II , 12 INCH SPECIAL	SQ YD	71.0	31.0	40.0	0.0	0.0
X1700116	CLASS A PATCHES, TYPE I , 12 INCH SPECIAL	SQ YD	15.0	3.0	12.0	0.0	0.0
X4420579	CLASS A PATCHES, TYPE IV, 12 INCH SPECIAL	SQ YD	49.0	49.0	0.0	0.0	0.0
* DENOTES SPECIALTY ITEM							

#REF!

MODEL: \\MODEL\NAME  
 FILE: NAME.pxl  
 USER: jw.bentley.com\FWIDOT\Documents\DOT Office\Dir\dir: S:\Project\1057067\CAD\Drawings\Drawings\1057067.dwg

USER NAME = sjrx	DESIGNED -	REVISED -
	DRAWN -	REVISED -
PLOT SCALE = 40.0000 ' / in.	CHECKED -	REVISED -
PLOT DATE = 12/16/2021	DATE -	REVISED -

**STATE OF ILLINOIS  
DEPARTMENT OF TRANSPORTATION**

**SUMMARY OF QUANTITIES**

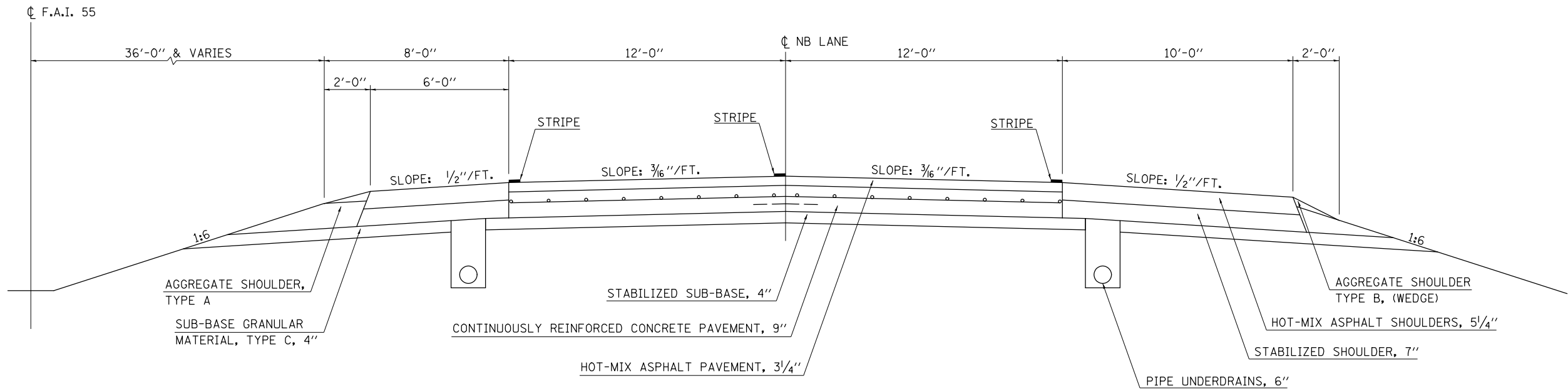
SCALE: SHEET 2 OF 2 SHEETS STA. TO STA.

F.A.** RTE.	SECTION	COUNTY	TOTAL SHEETS	SHEET NO.
**	CM22-5015	*	18	6
* MCLEAN & DEWITT			CONTRACT NO. 70F67	
ILLINOIS FED. AID PROJECT				

\*\* F.A.I. 57, F.A.U. 6406, F.A.P. 708

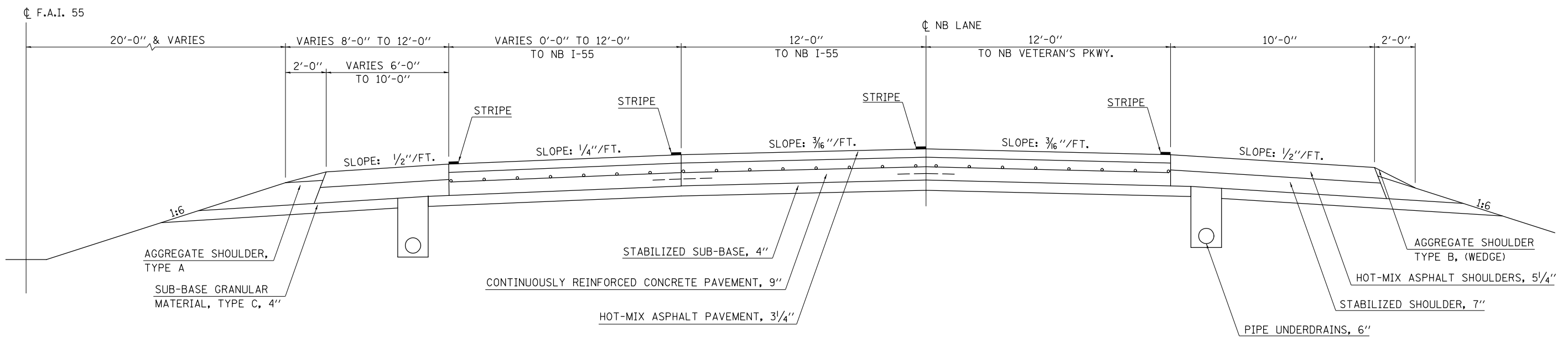
# ① EXISTING TYPICAL CROSS SECTION FAI 55 (NORTHBOUND)

STATION TO STATION  
376+50.00 TO 603+77.75 ②



# ② EXISTING TYPICAL CROSS SECTION FAI 55 (NORTHBOUND)

STATION TO STATION  
① 603+77.75 TO ③ 637+16.72



MODEL: I:\MODEL\MHFE  
 FILE: MHFE.dwg  
 PLOT DATE: 12/16/2021

USER NAME = suix	DESIGNED -	REVISED -
	DRAWN -	REVISED -
PLOT SCALE = 40,0000 * / in.	CHECKED -	REVISED -
PLOT DATE = 12/16/2021	DATE -	REVISED -

**STATE OF ILLINOIS  
DEPARTMENT OF TRANSPORTATION**

**TYPICAL CROSS SECTION (I-55)**

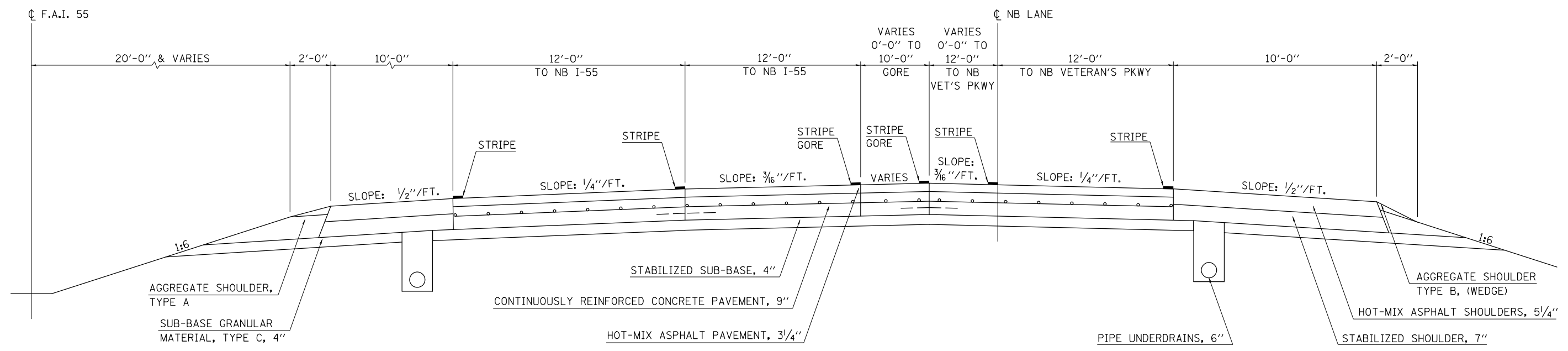
SCALE: SHEET 1 OF 3 SHEETS STA. TO STA.

F.A.** RTE.	SECTION	COUNTY	TOTAL SHEETS	SHEET NO.
**	CM22-5015	*	18	7
* MCLEAN & DEWITT			CONTRACT NO. 70F67	
ILLINOIS FED. AID PROJECT				

\*\* F.A.I. 57, F.A.U. 6406, F.A.P. 708

### ③ EXISTING TYPICAL CROSS SECTION FAI 55 (NORTHBOUND)

STATION TO STATION  
② 637+16.72 TO 647+48.69



MODEL: \\MODELS\MNF\...  
 FILE NAME: ...  
 PROJECT: ...

USER NAME = suhx	DESIGNED -	REVISED -
	DRAWN -	REVISED -
PLOT SCALE = 40,0000 * / in.	CHECKED -	REVISED -
PLOT DATE = 12/16/2021	DATE -	REVISED -

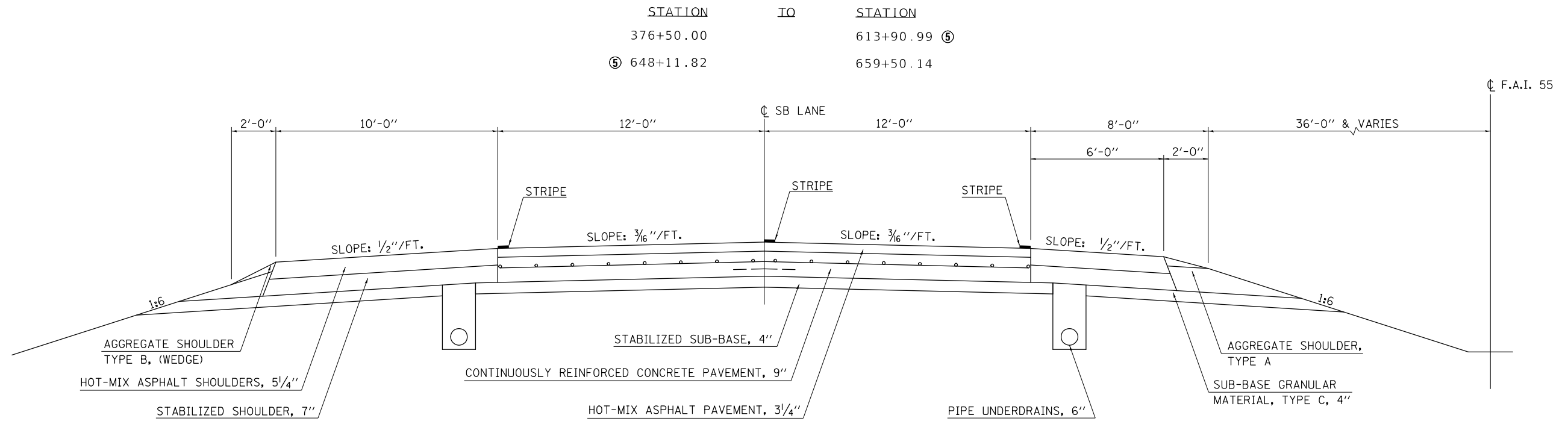
**STATE OF ILLINOIS  
DEPARTMENT OF TRANSPORTATION**

<b>TYPICAL CROSS SECTION (I-55)</b>			
SCALE:	SHEET 2	OF 3	SHEETS
STA.	TO STA.		

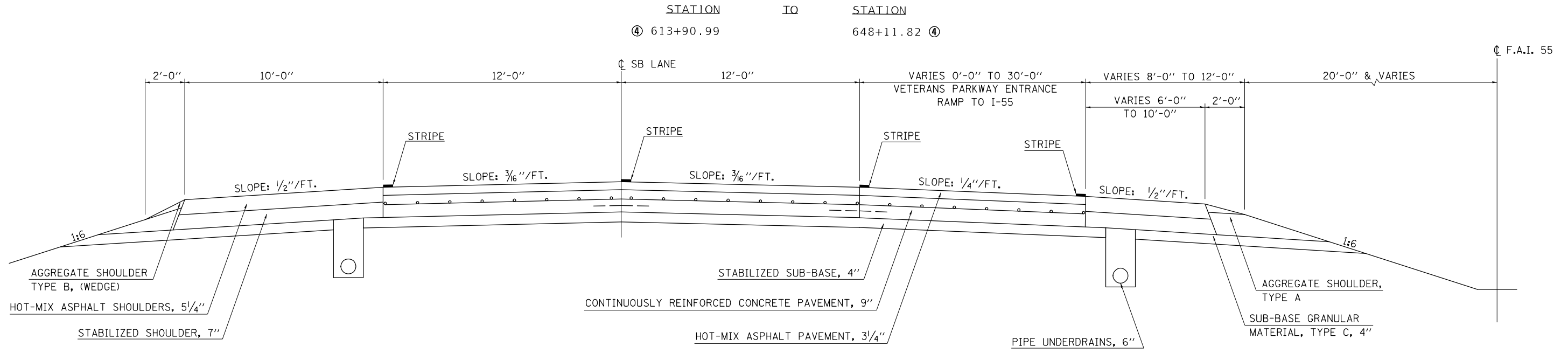
F.A.** RTE.	SECTION	COUNTY	TOTAL SHEETS	SHEET NO.
**	CM22-5015	*	18	8
* MCLEAN & DEWITT			CONTRACT NO. 70F67	
ILLINOIS FED. AID PROJECT				

\*\* F.A.I. 57, F.A.U. 6406, F.A.P. 708

**④ EXISTING TYPICAL CROSS SECTION FAI 55  
(SOUTHBOUND)**



**⑤ EXISTING TYPICAL CROSS SECTION FAI 55  
(SOUTHBOUND)**



MODEL: I:\MODEL\NAME: FILE: NAME: PLOT DATE: 12/16/2021

USER NAME = suhx	DESIGNED -	REVISED -
	DRAWN -	REVISED -
PLOT SCALE = 40,0000 * / in.	CHECKED -	REVISED -
PLOT DATE = 12/16/2021	DATE -	REVISED -

**STATE OF ILLINOIS  
DEPARTMENT OF TRANSPORTATION**

<b>TYPICAL CROSS SECTION (I-55)</b>			
SCALE:	SHEET 3	OF 3	SHEETS
STA.	TO STA.		

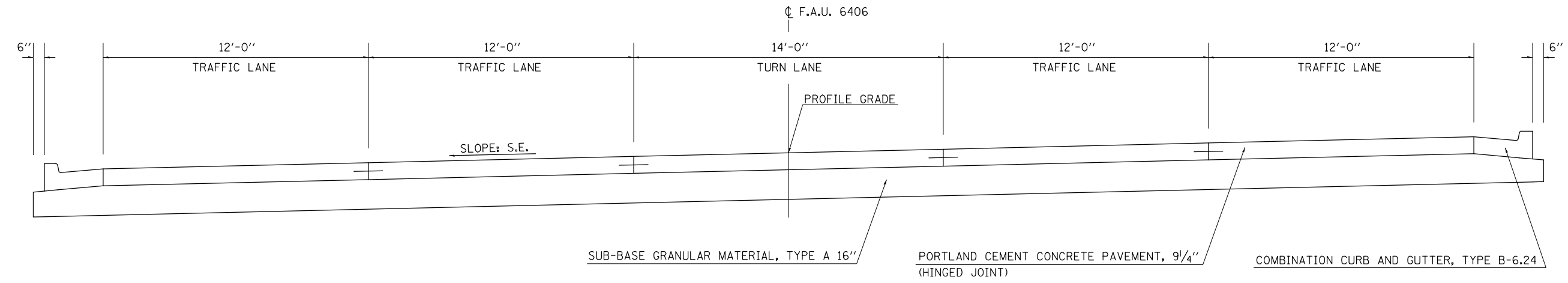
F.A.** RTE.	SECTION	COUNTY	TOTAL SHEETS	SHEET NO.
**	CM22-5015	*	18	9
* MCLEAN & DEWITT			CONTRACT NO. 70F67	
ILLINOIS FED. AID PROJECT				

\*\* F.A.I. 57, F.A.U. 6406, F.A.P. 708

**⑥ EXISTING TYPICAL CROSS SECTION FAU 6406  
(US 150)**

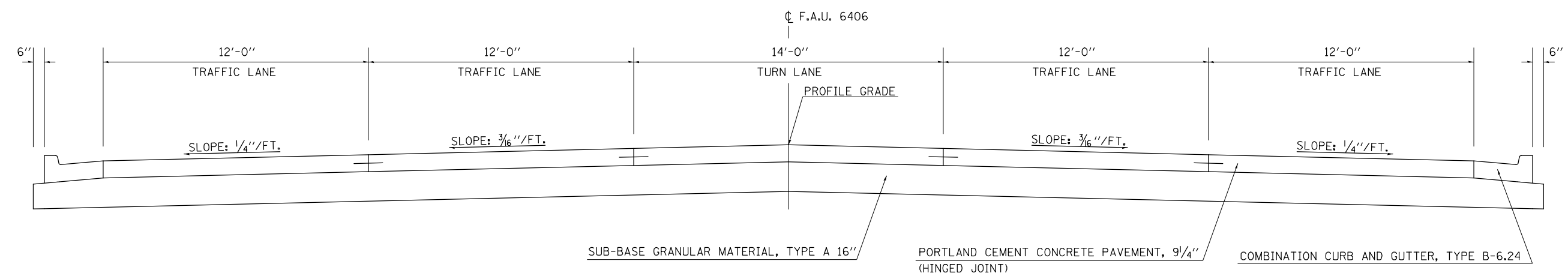
RAILROAD OMISSION  
STATION 88+59.65 TO STATION 88+72.87

STATION	TO	STATION
58+55.46		60+85.46 S.E. TRANSITION
60+85.46		63+63.09 FULL S.E. (0.022FT/FT)
⑦ 63+63.09		66+48.09 S.E. TRANSITION ⑦
87+33.80		90+18.80 S.E. TRANSITION
90+18.80		99+20.00 FULL S.E. (0.022FT/FT) ⑧



**⑦ EXISTING TYPICAL CROSS SECTION FAU 6406  
(US 150)**

STATION	TO	STATION
⑥ 66+48.09		87+33.80 ⑥



MODEL: I:\MODEL\NAME: FILE: NAME: P:\SUBC\PA: bench\com\FW\DOT\Documents\DOT Office\Dir\dir: S:\Project\0570667\CADD\Draw\CAD\Sheet\0570667.dwg; Type: dxf

USER NAME = suhx	DESIGNED -	REVISED -
	DRAWN -	REVISED -
PLOT SCALE = 40,0000 * / in.	CHECKED -	REVISED -
PLOT DATE = 12/16/2021	DATE -	REVISED -

**STATE OF ILLINOIS  
DEPARTMENT OF TRANSPORTATION**

**TYPICAL CROSS SECTION (US 150)**

SCALE: SHEET 1 OF 2 SHEETS STA. TO STA.

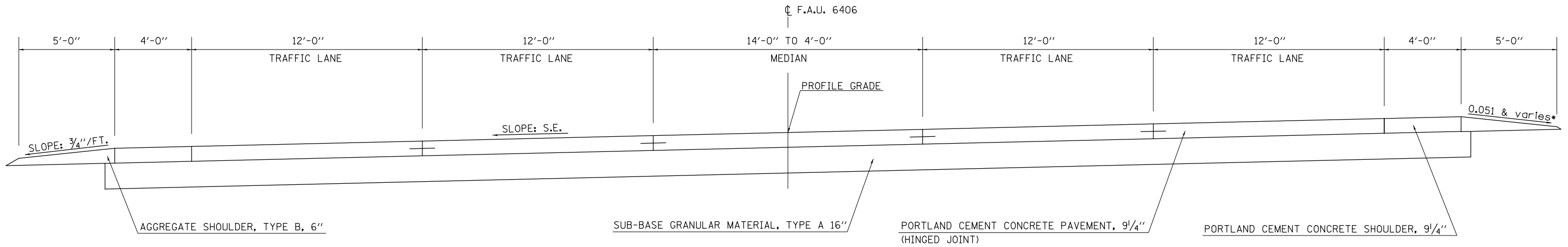
F.A.** RTE.	SECTION	COUNTY	TOTAL SHEETS	SHEET NO.
**	CM22-5015	*	18	10
* MCLEAN & DEWITT			CONTRACT NO. 70F67	
ILLINOIS FED. AID PROJECT				

\*\* F.A.I. 57, F.A.U. 6406, F.A.P. 708

**8 EXISTING TYPICAL CROSS SECTION FAU 6406**

**(US 150)**

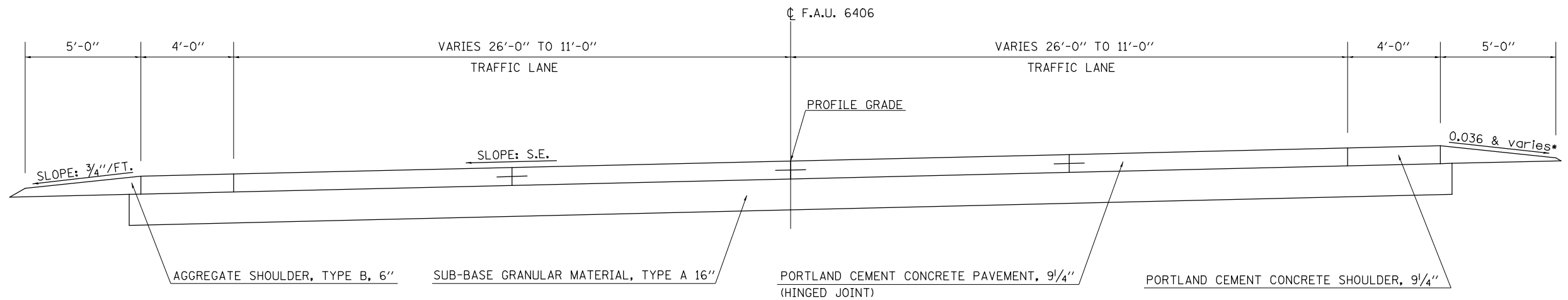
STATION TO STATION  
 ⑥ 99+20.00 101+20.00 ⑨



**9 EXISTING TYPICAL CROSS SECTION FAU 6406**

**(US 150)**

STATION TO STATION  
 ⑧ 101+20.00 107+20.00



MODEL: I:\MODEL\NAME: FILE: NAME: PLOT DATE: 12/16/2021

USER NAME = suhx	DESIGNED -	REVISED -
	DRAWN -	REVISED -
PLOT SCALE = 40,0000 * / in.	CHECKED -	REVISED -
PLOT DATE = 12/16/2021	DATE -	REVISED -

**STATE OF ILLINOIS  
 DEPARTMENT OF TRANSPORTATION**

**TYPICAL CROSS SECTION (US 150)**

SCALE: SHEET 2 OF 2 SHEETS STA. TO STA.

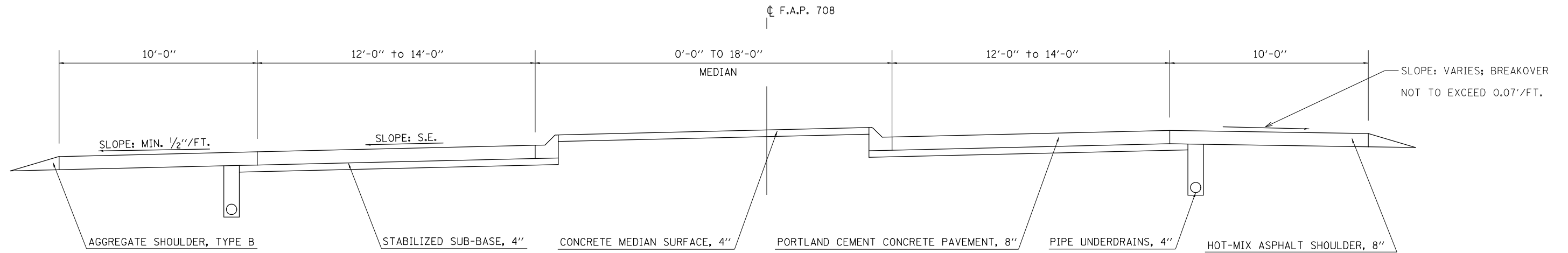
F.A. RTE.	SECTION	COUNTY	TOTAL SHEETS	SHEET NO.
**	CM22-5015	*	18	11
* MCLEAN & DEWITT			CONTRACT NO. 70F67	
ILLINOIS FED. AID PROJECT				

\*\* F.A.I. 57, F.A.U. 6406, F.A.P. 708

**10 EXISTING TYPICAL CROSS SECTION FAP 708**

**(US 51 BUSN)**

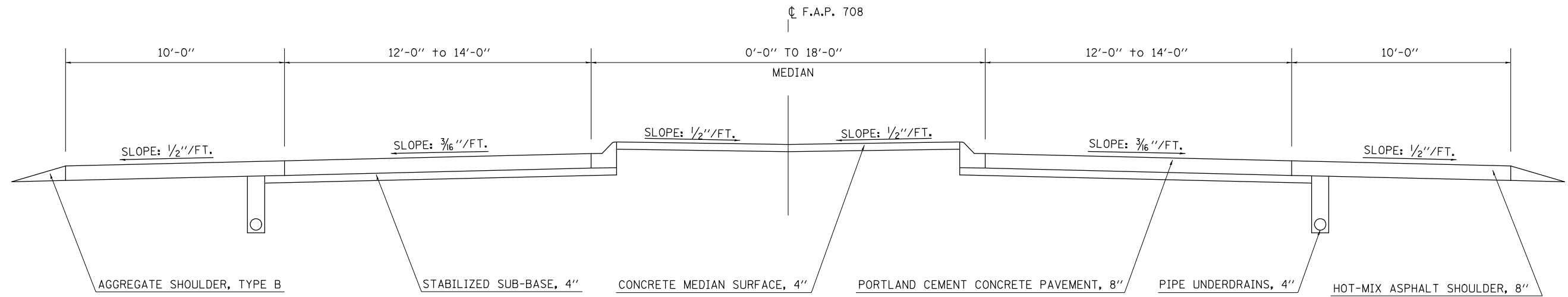
STATION	TO	STATION
1734+76.15		1736+26.15 S.E. TRANSITION
1736+26.15		1744+42.77 FULL S.E. (0.040FT/FT)
1744+42.77		1745+92.77 S.E. TRANSITION ⑩



**11 EXISTING TYPICAL CROSS SECTION FAP 708**

**(US 51 BUSN)**

STATION	TO	STATION
⑩ 1745+92.77		1749+37.88



MODEL: \\MODEL\MAME  
 FILE: \\MAILS\_P\pub\luc\paw\_bec\paw.com\F\DOT\Documents\DOT\Office\Dir\dr: S:\Project\10570667\CADD\DATA\CADD\Sheet\10570667.dwg; Type: dxf

USER NAME = suhx	DESIGNED -	REVISED -
	DRAWN -	REVISED -
PLOT SCALE = 40,0000 * / in.	CHECKED -	REVISED -
PLOT DATE = 12/16/2021	DATE -	REVISED -

**STATE OF ILLINOIS  
DEPARTMENT OF TRANSPORTATION**

**TYPICAL CROSS SECTION (US 51 BUSN)**

SCALE: SHEET 1 OF 1 SHEETS STA. TO STA.

F.A. ** RTE.	SECTION	COUNTY	TOTAL SHEETS	SHEET NO.
**	CM22-5015	*	18	12
* MCLEAN & DEWITT			CONTRACT NO. 70F67	
ILLINOIS FED. AID PROJECT				

\*\* F.A.I. 57, F.A.U. 6406, F.A.P. 708



## PATCHING SCHEDULE

I-55 CLASS A PATCHES, 12 INCH (SPECIAL)							CLASS A PATCHES, TYPE I, 12 INCH SPECIAL (SQ YD)		CLASS A PATCHES, TYPE II, 12 INCH SPECIAL (SQ YD)		CLASS A PATCHES, TYPE IV, 12 INCH SPECIAL (SQ YD)		SAW CUTS (FT)		TIE BARS 3/4" TRANSVERSE (EACH)		TIE BARS 3/4" LONGITUDINAL (EACH)		PATCHING REINFORCEMENT (SQ. YD)	
APPROX. STATION	DIR	LANE	LENGTH	WIDTH	SQ YD	*URBAN/RURAL	X1700116		X1700052		X4420579		44213200		44213204		44213204		44213000	
							URBAN	RURAL	URBAN	RURAL	URBAN	RURAL	URBAN	RURAL	URBAN	RURAL	URBAN	RURAL	URBAN	RURAL
436+26	NB	DL	8.0	12.0	10.67	RURAL				10.7				40.0		22.0				10.7
464+61	NB	DL	6.0	12.0	8.00	RURAL				8.0				36.0		22.0				8.0
465+57	NB	DL	4.5	6.0	3.00	RURAL		3.0						21.0		10.0				3.0
470+04	NB	DL	4.5	6.0	3.00	RURAL		3.0						21.0		10.0				3.0
531+40	NB	DL	4.5	12.0	6.00	URBAN			6.0				33.0		22.0					6.0
562+72	NB	DL	4.5	6.0	3.00	URBAN	3.00						21.0		10.0					3.0
609+91	NB	DL	4.5	12.0	6.00	URBAN			6.0				33.0		22.0					6.0
643+78	NB	DL	10.0	6.0	6.67	URBAN			6.7				32.0		10.0					6.7
<b>MCLEAN COUNTY-URBAN SUBTOTAL:</b>								3.0		19.0				119.0		64.0				22.0
<b>MCLEAN COUNTY-RURAL SUBTOTAL:</b>								6.0		19.0				118.0		64.0				25.0

\*Note: Area north of STA. 500 + 76 on I-55 is urban, and area south of STA. 500 + 76 on I-55 is rural.

## PATCHING SCHEDULE

I-55 CLASS A PATCHES, 12 INCH (SPECIAL)							CLASS A PATCHES, TYPE I, 12 INCH SPECIAL (SQ YD)		CLASS A PATCHES, TYPE II, 12 INCH SPECIAL (SQ YD)		CLASS A PATCHES, TYPE IV, 12 INCH SPECIAL (SQ YD)		SAW CUTS (FT)		TIE BARS 3/4" TRANSVERSE (EACH)		TIE BARS 3/4" LONGITUDINAL (EACH)		PATCHING REINFORCEMENT (SQ. YD)		
APPROX. STATION	DIR	LANE	LENGTH	WIDTH	SQ YD	*URBAN/RURAL	X1700116		X1700052		X4420579		44213200		44213204		44213204		44213000		
							URBAN	RURAL	URBAN	RURAL	URBAN	RURAL	URBAN	RURAL	URBAN	RURAL	URBAN	RURAL	URBAN	RURAL	
384+74	SB	DL	4.5	12.0	6.00	RURAL				6.0				33.0		22.0				6.0	
385+30	SB	DL	4.5	12.0	6.00	RURAL				6.0				33.0		22.0				6.0	
397+52	SB	PL	4.5	6.0	3.00	RURAL		3.0						21.0		10.0				3.0	
398+12	SB	PL	4.5	6.0	3.00	RURAL		3.0						21.0		10.0				3.0	
399+92	SB	PL	7.0	12.0	9.33	RURAL				9.3				38.0		22.0				9.3	
535+70	SB	DL	110.0	4.0	48.89	URBAN					48.9		228.0		6.0		37.0			48.9	
555+87	SB	DL	4.5	12.0	6.00	URBAN			6.0				33.0		22.0					6.0	
557+40	SB	DL	4.5	12.0	6.00	URBAN			6.0				33.0		22.0					6.0	
<b>MCLEAN COUNTY-URBAN SUBTOTAL:</b>										12.0		49.0		294.0		50.0		37.0			61.0
<b>MCLEAN COUNTY-RURAL SUBTOTAL:</b>								6.0		21.0				146.0		86.0				27.0	

\*Note: Area north of STA. 500 + 76 on I-55 is urban, and area south of STA. 500 + 76 on I-55 is rural.

## CHANGEABLE MESSAGE SIGN

I-55			70107025 CHANGEABLE MESSAGE SIGN
DESCRIPTION	DIRECTION	*URBAN/RURAL	(CAL DAY)
I-55 ADVANCE NOTICE	I-55 NB	URBAN	3
I-55 ADVANCE NOTICE	I-55 SB	RURAL	3
<b>I-55 MCLEAN COUNTY-URBAN SUBTOTAL:</b>			3.0
<b>I-55 MCLEAN COUNTY-RURAL SUBTOTAL:</b>			3.0

MODEL: I:\MODEL\MMMS  
FILE: MMMS\_20210616.dwg  
PROJECT: I:\PROJECTS\DOT\Office\Dir\Dir: S:\Project\I-55\70107025\70107025.dwg

USER NAME = slrx	DESIGNED -	REVISED -	<b>STATE OF ILLINOIS DEPARTMENT OF TRANSPORTATION</b>	<b>SCHEDULE OF QUANTITIES (I-55)</b>				F.A. RTE.	SECTION	COUNTY	TOTAL SHEETS	SHEET NO.		
PLOT SCALE = 40,0000' / in.	CHECKED -	REVISED -		SCALE:	SHEET 1	OF 1	SHEETS	STA.	TO STA.	**	CM22-5015	*	18	13
PLOT DATE = 12/16/2021	DATE -	REVISED -									* MCLEAN & DEWITT		CONTRACT NO. 70F67	
											ILLINOIS FED. AID PROJECT			

\*\* F.A.I. 57, F.A.U. 6406, F.A.P. 708

## PATCHING SCHEDULE

US 150 CLASS B PATCHES, 9 INCH						CLASS B PATCHES, TYPE II, 9 INCH (SQ YD)	CLASS B PATCHES, TYPE IV, 9 INCH (SQ YD)	SAW CUTS (FT)	TIE BARS 3/4" (EACH)	DOWEL BARS 1 1/2" (EACH)	WELDED WIRE REINFORCEMENT (SQ. YD)
APPROX. STATION	DIR	LANE	LENGTH	WIDTH	SQ YD	44200956	44200964	44213200	44213204	44201299	44200050
106+02	NB	DL	1555.0	4.0	691.11		691.1	3122.0	1036.0	210.0	691.1
87+55	NB	DL	6.0	12.0	8.00	8.0		48.0		20.0	
87+55	NB	PL	6.0	12.0	8.00	8.0		48.0		20.0	
88+21	NB	DL	6.0	12.0	8.00	8.0		48.0		20.0	
88+21	NB	PL	6.0	12.0	8.00	8.0		48.0		20.0	
89+48	NB	DL	6.0	12.0	8.00	8.0		48.0		20.0	
89+93	NB	DL	6.0	12.0	8.00	8.0		48.0		20.0	
90+13	NB	DL	6.0	12.0	8.00	8.0		48.0		20.0	
90+23	NB	DL	6.0	12.0	8.00	8.0		48.0		20.0	
90+53	NB	DL	6.0	10.0	6.67	6.7		42.0		16.0	
90+77	NB	DL	6.0	10.0	6.67	6.7		42.0		16.0	
90+98	NB	DL	6.0	10.0	6.67	6.7		42.0		16.0	
91+13	NB	DL	6.0	10.0	6.67	6.7		42.0		16.0	
91+28	NB	DL	6.0	10.0	6.67	6.7		42.0		16.0	
91+58	NB	DL	6.0	10.0	6.67	6.7		42.0		16.0	
91+58	NB	PL	6.0	10.0	6.67	6.7		42.0		16.0	
91+73	NB	DL	6.0	10.0	6.67	6.7		42.0		16.0	
91+73	NB	PL	6.0	10.0	6.67	6.7		42.0		16.0	
91+88	NB	DL	6.0	10.0	6.67	6.7		42.0		16.0	
92+18	NB	DL	6.0	10.0	6.67	6.7		42.0		16.0	
92+93	NB	DL	6.0	10.0	6.67	6.7		42.0		16.0	
93+08	NB	DL	6.0	10.0	6.67	6.7		42.0		16.0	
93+23	NB	DL	6.0	10.0	6.67	6.7		42.0		16.0	
94+72	NB	DL	6.0	10.0	6.67	6.7		42.0		16.0	
94+87	NB	DL	6.0	10.0	6.67	6.7		42.0		16.0	
95+92	NB	DL	6.0	10.0	6.67	6.7		42.0		16.0	
96+67	NB	DL	6.0	10.0	6.67	6.7		42.0		16.0	
97+58	NB	DL	6.0	10.0	6.67	6.7		42.0		16.0	
98+03	NB	DL	6.0	10.0	6.67	6.7		42.0		16.0	
98+48	NB	DL	6.0	10.0	6.67	6.7		42.0		16.0	
98+92	NB	DL	7.0	10.0	7.78	7.8		44.0		16.0	
99+06	NB	DL	6.0	10.0	6.67	6.7		42.0		16.0	
99+64	NB	DL	6.0	10.0	6.67	6.7		42.0		16.0	
99+79	NB	DL	6.0	10.0	6.67	6.7		42.0		16.0	
100+12	NB	DL	6.0	10.0	6.67	6.7		42.0		16.0	
100+27	NB	DL	6.0	10.0	6.67	6.7		42.0		16.0	
100+57	NB	DL	6.0	10.0	6.67	6.7		42.0		16.0	
101+02	NB	DL	6.0	10.0	6.67	6.7		42.0		16.0	
101+32	NB	DL	6.0	10.0	6.67	6.7		42.0		16.0	
101+47	NB	DL	6.0	10.0	6.67	6.7		42.0		16.0	
101+62	NB	DL	6.0	10.0	6.67	6.7		42.0		16.0	
102+42	NB	DL	6.0	9.0	6.00	6.0		39.0		14.0	

US 150 NB PATCHING SCHEDULE TO BE CONTINUED IN NEXT PAGE

MODEL: I:\MODEL\NAME: FILE: NAME: ... \Public\aw\_bentley.com\FWIDOT\Documents\DOT\_Offices\Dir\rdt\_S\Project\1057067\CAD\Drawings\1057067-shb-Schedules

USER NAME = slrx	DESIGNED -	REVISED -
	DRAWN -	REVISED -
PLOT SCALE = 40.0000 ' / in.	CHECKED -	REVISED -
PLOT DATE = 12/16/2021	DATE -	REVISED -

**STATE OF ILLINOIS  
DEPARTMENT OF TRANSPORTATION**

**SCHEDULE OF QUANTITIES (US 150)**

SCALE: SHEET 1 OF 2 SHEETS STA. TO STA.

F.A.** RTE.	SECTION	COUNTY	TOTAL SHEETS	SHEET NO.
**	CM22-5015	*	18	14
* MCLEAN & DEWITT			CONTRACT NO. 70F67	
ILLINOIS FED. AID PROJECT				

\*\* F.A.I. 57, F.A.U. 6406, F.A.P. 708

## PATCHING SCHEDULE

US 150 CLASS B PATCHES, 9 INCH						CLASS B PATCHES, TYPE II, 9 INCH (SQ YD)	CLASS B PATCHES, TYPE IV, 9 INCH (SQ YD)	SAW CUTS (FT)	TIE BARS 3/4" (EACH)	DOWEL BARS 1 1/2" (EACH)	WELDED WIRE REINFORCEMENT (SQ. YD)
APPROX. STATION	DIR	LANE	LENGTH	WIDTH	SQ YD	44200956	44200964	44213200	44213204	44201299	44200050
103+32	NB	DL	6.0	10.0	6.67	6.7		42.0		16.0	
103+92	NB	DL	6.0	10.0	6.67	6.7		42.0		16.0	
104+22	NB	DL	6.0	10.0	6.67	6.7		42.0		16.0	
104+37	NB	DL	6.0	10.0	6.67	6.7		42.0		16.0	
104+52	NB	DL	6.0	10.0	6.67	6.7		42.0		16.0	
104+82	NB	DL	6.0	10.0	6.67	6.7		42.0		16.0	
104+97	NB	DL	6.0	10.0	6.67	6.7		42.0		16.0	
105+12	NB	DL	6.0	10.0	6.67	6.7		42.0		16.0	
105+27	NB	DL	6.0	10.0	6.67	6.7		42.0		16.0	
105+42	NB	DL	6.0	10.0	6.67	6.7		42.0		16.0	
105+57	NB	DL	6.0	10.0	6.67	6.7		42.0		16.0	
105+72	NB	DL	6.0	10.0	6.67	6.7		42.0		16.0	
105+87	NB	DL	6.0	10.0	6.67	6.7		42.0		16.0	
106+02	NB	DL	6.0	12.0	8.00	8.0		48.0		20.0	
106+47	NB	DL	6.0	12.0	8.00	8.0		48.0		20.0	
106+62	NB	DL	6.0	12.0	8.00	8.0		48.0		20.0	
106+77	NB	DL	6.0	12.0	8.00	8.0		48.0		20.0	
106+92	NB	DL	6.0	12.0	8.00	8.0		48.0		20.0	
107+07	NB	DL	6.0	12.0	8.00	8.0		48.0		20.0	
<b>MCLEAN COUNTY-URBAN SUBTOTAL :</b>						419.0	691.0	5725.0	1036.0	1224.0	691.0

## PATCHING SCHEDULE

US 150 CLASS B PATCHES, 9 INCH						CLASS B PATCHES, TYPE II, 9 INCH (SQ YD)	SAW CUTS (FT)	TIE BARS 3/4" (EACH)	DOWEL BARS 1 1/2" (EACH)	WELDED WIRE REINFORCEMENT (SQ. YD)
APPROX. STATION	DIR	LANE	LENGTH	WIDTH	SQ YD	44200956	44213200	44213204	44201299	44200050
95+10	SB	PL	6.0	12.0	8.00	8.0	48.0		20.0	
102+00	SB	DL	6.0	12.0	8.00	8.0	48.0		20.0	
107+23	SB	PL	6.0	9.0	6.00	6.0	39.0		14.0	
<b>MCLEAN COUNTY-URBAN SUBTOTAL :</b>						22.0	135.0		54.0	

## CURB AND GUTTER SCHEDULE

US 150 CC&G B-6.24				COMBINATION CURB & GUTTER REMOVAL (FOOT)	COMBINATION CONC. C&G TYPE B-6.24 (FOOT)
APPROX. STATION	DIR	LANE	LENGTH	44000500	60605000
79+03	NB	DL	8.0	8.0	8.0
80+67	NB	DL	8.0	8.0	8.0
85+04	NB	DL	8.0	8.0	8.0
86+37	NB	DL	8.0	8.0	8.0
92+58	NB	DL	8.0	8.0	8.0
95+43	NB	DL	8.0	8.0	8.0
97+00	NB	DL	8.0	8.0	8.0
98+30	NB	DL	8.0	8.0	8.0
<b>MCLEAN COUNTY-URBAN SUBTOTAL :</b>				64.0	64.0

MODEL: \\MODEL\NAME  
FILE: \\NAME.pxl\subcaw\_bentley.com\FW\DOT\Documents\DOT\_Offices\Dir\rdt\_S\Project\1057067\CAD\Draws\CAD\Draws\1057067\shb\Schedules

USER NAME = slrx	DESIGNED -	REVISED -
	DRAWN -	REVISED -
PLOT SCALE = 40.0000' / in.	CHECKED -	REVISED -
PLOT DATE = 12/16/2021	DATE -	REVISED -

**STATE OF ILLINOIS  
DEPARTMENT OF TRANSPORTATION**

**SCHEDULE OF QUANTITIES (US 150)**

SCALE: SHEET 2 OF 2 SHEETS STA. TO STA.

F.A. RTE.	SECTION	COUNTY	TOTAL SHEETS	SHEET NO.
**	CM22-5015	*	18	15
* MCLEAN & DEWITT			CONTRACT NO. 70F67	

ILLINOIS FED. AID PROJECT  
\*\* F.A.I. 57, F.A.U. 6406, F.A.P. 708

## PATCHING SCHEDULE

US 51 BUSN CLASS B PATCHES, 8 INCH						CLASS B PATCHES, TYPE II, 8 INCH (SQ YD)	CLASS B PATCHES, TYPE IV, 8 INCH (SQ YD)	SAW CUTS (FT)	TIE BARS 3/4" (EACH)	DOWEL BARS 1 1/2" (EACH)	WELDED WIRE REINFORCEMENT (SQ. YD)
APPROX. STATION	DIR	LANE	LENGTH	WIDTH	SQ YD						
1734+83	NB	DL	6.0	14.0	9.33	44200934	44200944	44213200	44213204	44201299	44200050
1735+05	NB	DL	10.0	12.0	13.33	9.3		54.0		24.0	
1736+16	NB	DL	6.0	12.0	8.00	13.3		56.0		20.0	
1736+63	NB	DL	9.0	12.0	12.00	8.0		48.0		20.0	
1737+56	NB	DL	9.0	12.0	12.00	12.0		54.0		20.0	
1739+26	NB	DL	6.0	12.0	8.00	8.0		48.0		20.0	
1739+68	NB	DL	6.0	12.0	8.00	8.0		48.0		20.0	
1740+33	NB	DL	6.0	12.0	8.00	8.0		48.0		20.0	
1740+48	NB	DL	6.0	12.0	8.00	8.0		48.0		20.0	
1740+68	NB	DL	6.0	12.0	8.00	8.0		48.0		20.0	
1741+33	NB	DL	6.0	12.0	8.00	8.0		48.0		20.0	
1748+20	NB	DL	62.0	20.0	137.78		137.8	184.0	21.0	108.0	137.8
<b>DEWITT COUNTY-URBAN SUBTOTAL:</b>						103.0	138.0	738.0	21.0	332.0	138.0

## PATCHING SCHEDULE

US 51 BUSN CLASS B PATCHES, 8 INCH						CLASS B PATCHES, TYPE II, 8 INCH (SQ YD)	CLASS B PATCHES, TYPE III, 8 INCH (SQ YD)	CLASS B PATCHES, TYPE IV, 8 INCH (SQ YD)	SAW CUTS (FT)	TIE BARS 3/4" (EACH)	DOWEL BARS 1 1/2" (EACH)	WELDED WIRE REINFORCEMENT (SQ. YD)
APPROX. STATION	DIR	LANE	LENGTH	WIDTH	SQ YD							
1735+84	SB	DL	9.5	12.0	12.67	44200934	44200942	44200944	44213200	44213204	44201299	44200050
1736+04	SB	DL	9.0	12.0	12.00	12.7			55.0		20.0	
1736+26	SB	DL	9.5	12.0	12.67	12.0			54.0		20.0	
1736+82	SB	DL	6.0	12.0	8.00	12.7			55.0		20.0	
1737+10	SB	DL	17.0	12.0	22.67	8.0	22.7		48.0		20.0	
1737+40	SB	DL	6.0	12.0	8.00	8.0			70.0		30.0	22.7
1737+56	SB	DL	6.0	12.0	8.00	8.0			48.0		20.0	
1737+81	SB	DL	6.0	12.0	8.00	8.0			48.0		20.0	
1737+95	SB	DL	10.0	12.0	13.33	8.0			48.0		20.0	
1738+08	SB	DL	6.0	12.0	8.00	13.3			56.0		20.0	
1738+54	SB	DL	6.0	12.0	8.00	8.0			48.0		20.0	
1739+00	SB	DL	12.0	12.0	16.00	8.0	16.0		60.0		20.0	16.0
1739+71	SB	DL	12.0	12.0	16.00	8.0	16.0		60.0		20.0	16.0
1740+07	SB	DL	15.0	12.0	20.00	8.0	20.0		66.0		20.0	20.0
1740+58	SB	DL	6.0	12.0	8.00	8.0			48.0		20.0	
1740+98	SB	DL	6.0	12.0	8.00	8.0			48.0		20.0	
1741+22	SB	DL	6.0	12.0	8.00	8.0			48.0		20.0	
1741+68	SB	DL	9.5	12.0	12.67	8.0			48.0		20.0	
1741+85	SB	DL	6.0	12.0	8.00	8.0			48.0		20.0	
1748+20	SB	DL	34.0	14.0	52.89		52.9	110.0	11.0	48.0	52.9	
<b>DEWITT COUNTY-URBAN SUBTOTAL:</b>						143.0	75.0	53.0	1121.0	11.0	438.0	128.0

MODEL: I:\MODEL\NAME: FILE: NAME: ... \Subcontract\bechtel.com\FW\DOT\Documents\DOT\_Offices\Dir\Dir: S:\Project\1057067\CAD\Drawn\CAD\Drawn\1057067\shb\Schedules

USER NAME = slrx	DESIGNED -	REVISED -
	DRAWN -	REVISED -
PLOT SCALE = 40.0000' / in.	CHECKED -	REVISED -
PLOT DATE = 12/16/2021	DATE -	REVISED -

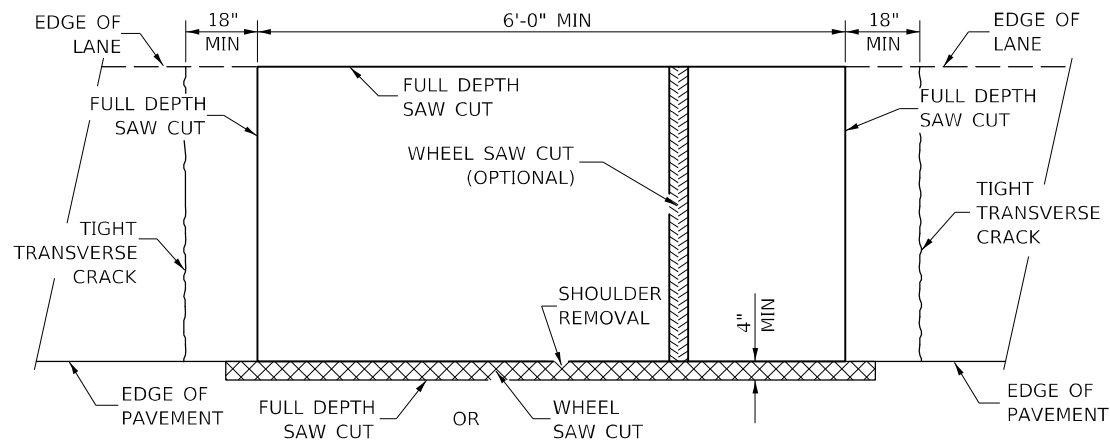
**STATE OF ILLINOIS  
DEPARTMENT OF TRANSPORTATION**

**SCHEDULE OF QUANTITIES (US 51 BUSN)**

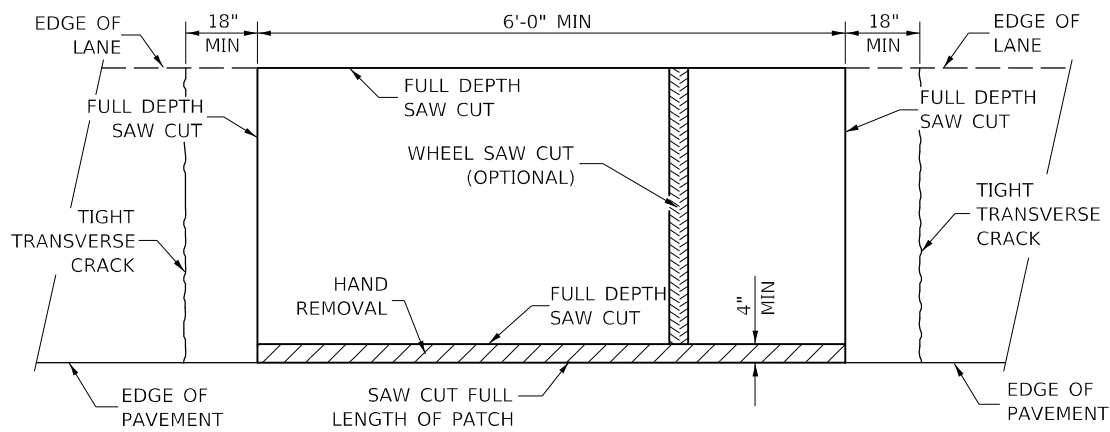
SCALE: SHEET 1 OF 1 SHEETS STA. TO STA.

F.A. ** RTE.	SECTION	COUNTY	TOTAL SHEETS	SHEET NO.
**	CM22-5015	*	18	16
* MCLEAN & DEWITT			CONTRACT NO. 70F67	
ILLINOIS FED. AID PROJECT				

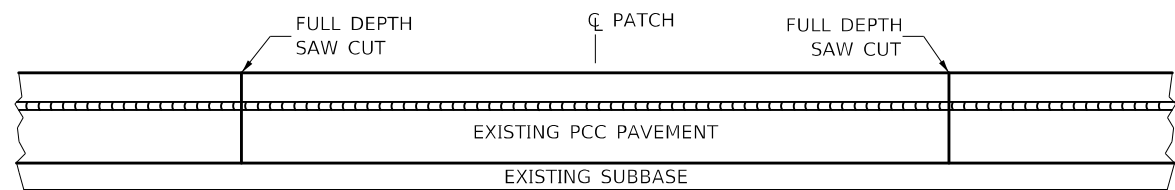
\*\* F.A.I. 57, F.A.U. 6406, F.A.P. 708



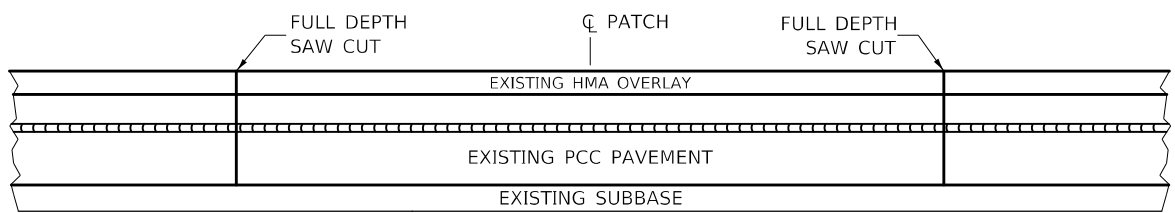
**PAVEMENT SAWING DETAIL  
(HMA SHOULDER)**



**PAVEMENT SAWING DETAIL  
(PCC SHOULDER)**

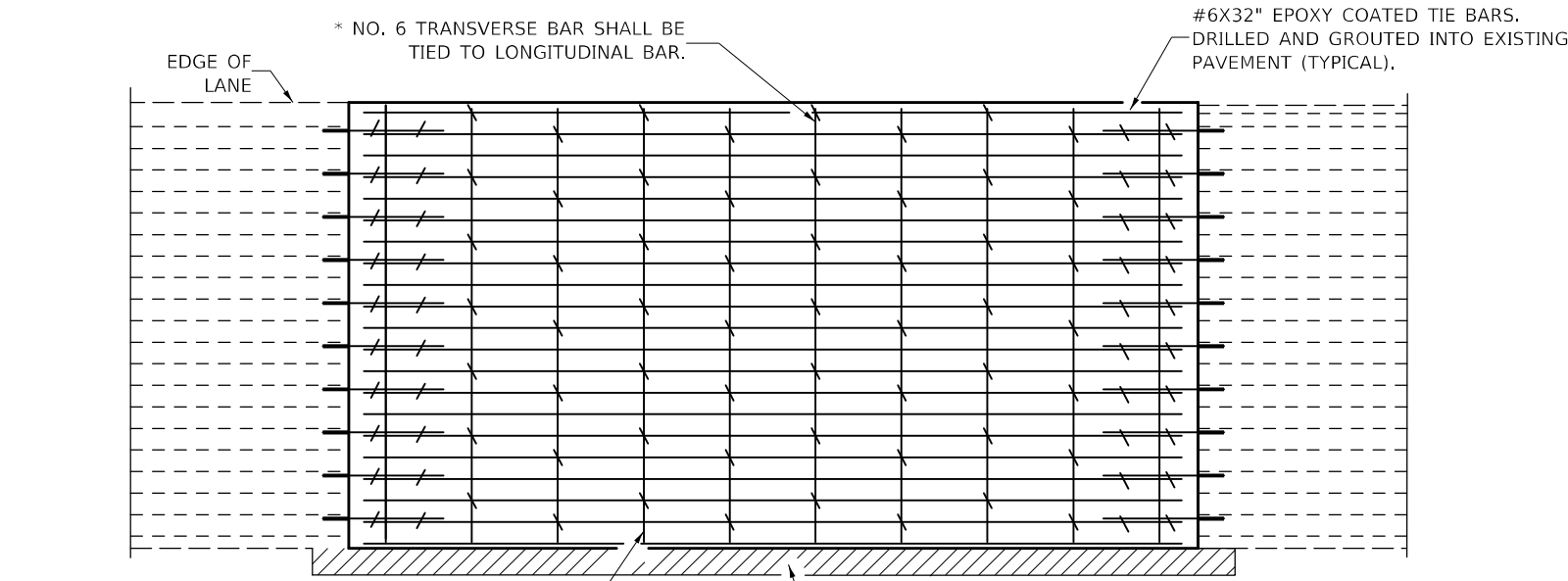


**EXISTING PAVEMENT WITHOUT HMA SURFACE**

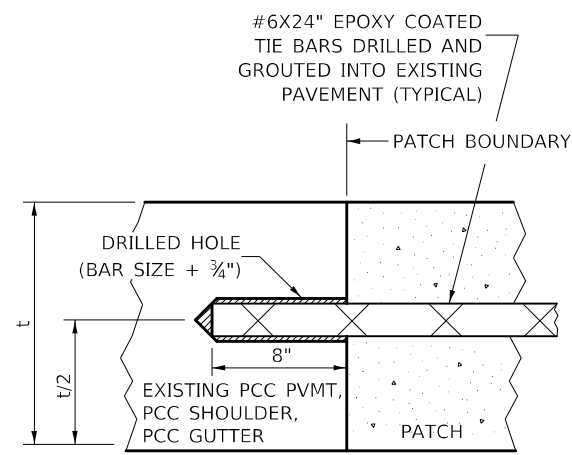


**EXISTING PAVEMENT WITH HMA SURFACE**

**PAVEMENT SAWING DETAIL FOR CLASS A PATCHING  
(CRC PAVEMENT)**



**PAVEMENT REINFORCEMENT DETAIL**



**LONGITUDINAL CONSTRUCTION JOINT**

PATCHES MORE THAN 20' IN LENGTH SHALL BE TIED TO ADJACENT PAVEMENT, PCC SHOULDERS OR PCC CURB AND GUTTER WITH #6x24" EPOXY COATED TIE BARS AT 24" CENTERS.

**NOTES:**

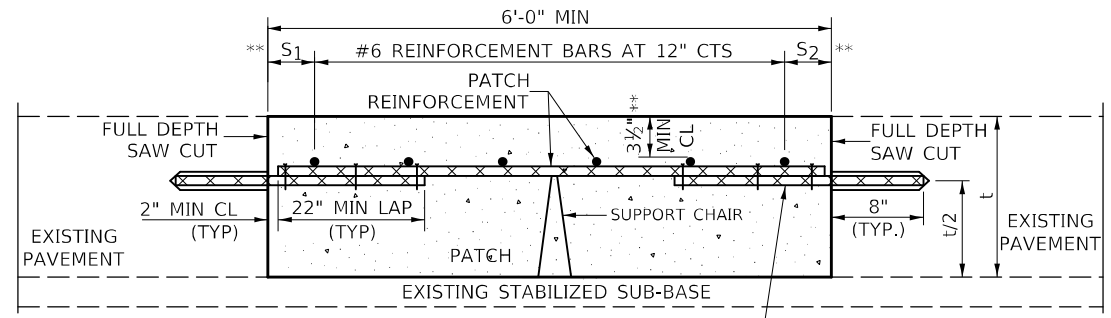
EXISTING LONGITUDINAL REINFORCEMENT SPACING;  $\pm 6\frac{1}{2}$ ".

SPACING OF NEW LONGITUDINAL REINFORCEMENT AND NEW LONGITUDINAL TIE BARS SHALL MATCH SPACING OF EXISTING REINFORCEMENT AND SHALL BE TIED TOGETHER WITH A MINIMUM OF TWO TIES PER BAR.

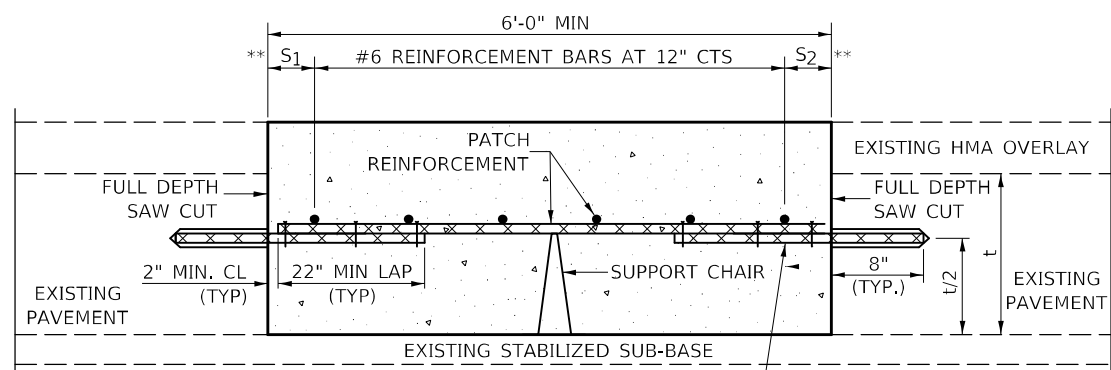
SUPPORT CHAIRS SHALL BE REQUIRED WHENEVER PATCH LENGTH EXCEEDS 6'-0"

\* EVERY THIRD INTERSECTION MUST BE TIED. WHEN THE MINIMUM CLEARANCE CANNOT BE OBTAINED WITH THE TRANSVERSE REBAR ON TOP, THEN THE TRANSVERSE REBAR SHALL BE TIED TO THE BOTTOM OF THE LONGITUDINAL REBAR.

\*\* VARIABLES WHERE  $S_1$  AND  $S_2$  ARE  $2\frac{1}{2}$ " MIN. AND 12" MAX.



**WITHOUT HMA OVERLAY**



**WITH HMA OVERLAY**

**PATCHING DETAIL FOR CLASS A PATCHING  
(CRC PAVEMENT)**

MODEL: I:\MODEL\MHMF... FILE NAME: ...

USER NAME = suix	DESIGNED -	REVISED -
DRAWN -	REVISOR -	
PLOT SCALE = 40,0000 * / in.	CHECKED -	REVISOR -
PLOT DATE = 12/16/2021	DATE -	REVISOR -

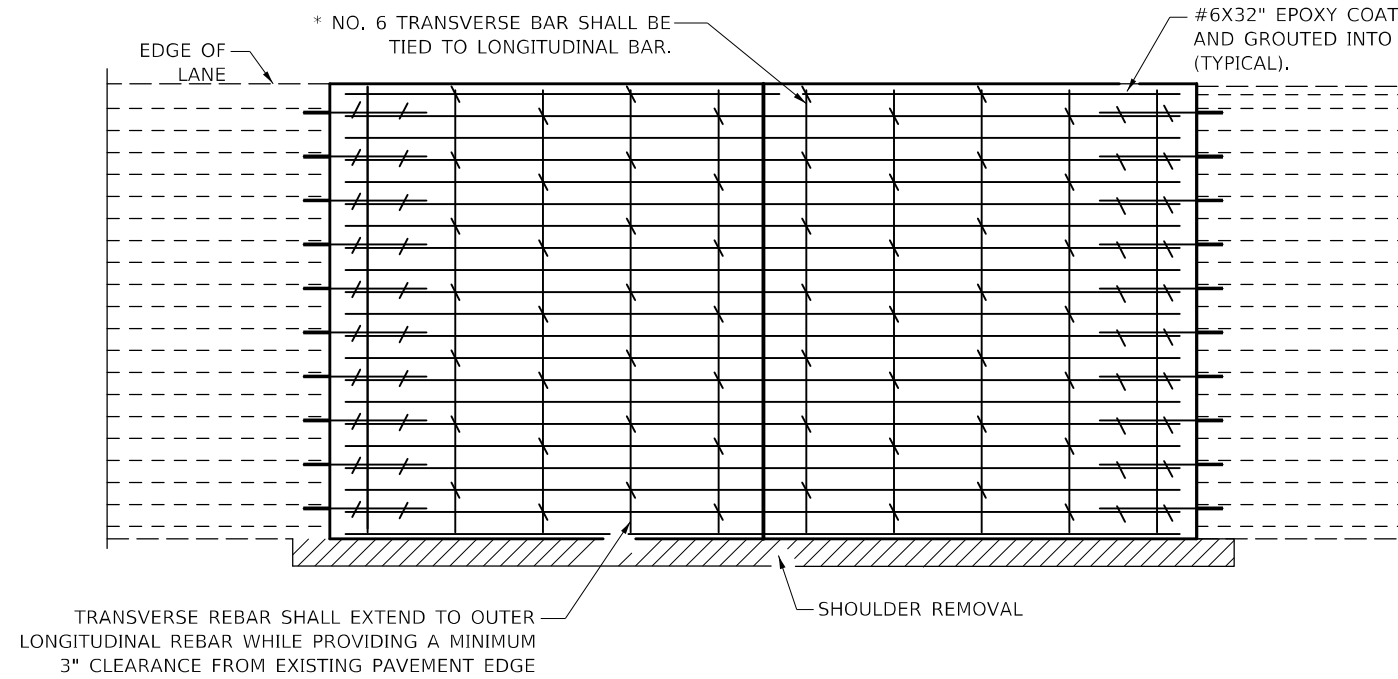
**STATE OF ILLINOIS  
DEPARTMENT OF TRANSPORTATION**

**CLASS A PATCHES (SPECIAL)**

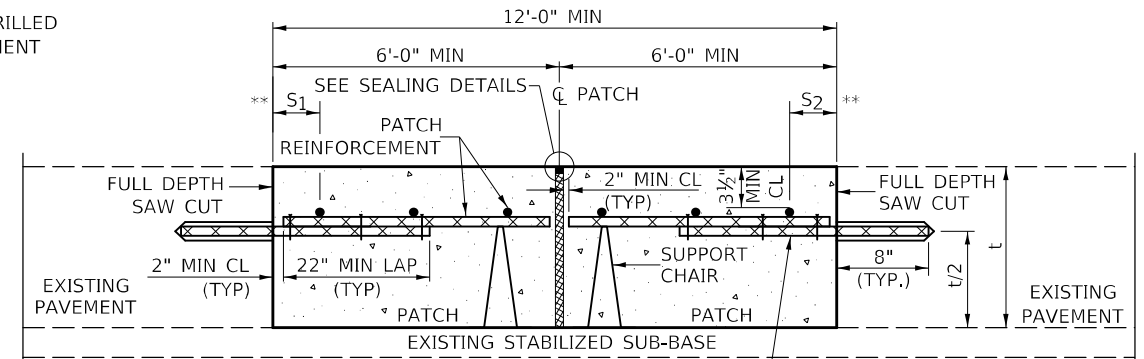
SCALE: SHEET 1 OF 2 SHEETS STA. TO STA.

F.A.** RTE.	SECTION	COUNTY	TOTAL SHEETS	SHEET NO.
**	CM22-5015	*	18	17
* MCLEAN & DEWITT		CONTRACT NO. 70F67		

ILLINOIS FED. AID PROJECT  
\*\* F.A.I. 57, F.A.U. 6406, F.A.P. 708

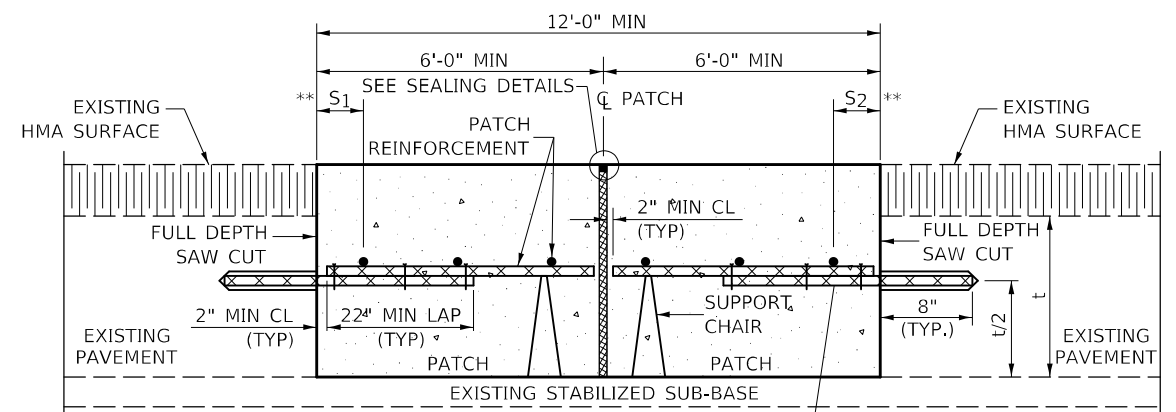


**PAVEMENT REINFORCEMENT DETAIL**



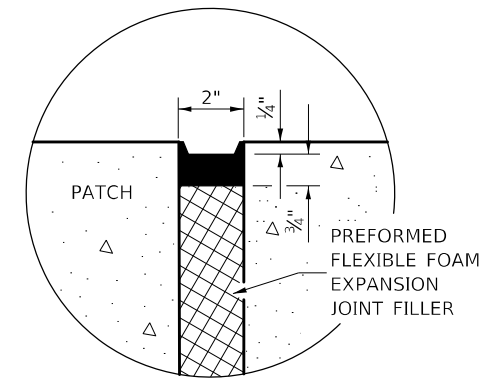
**WITHOUT HMA OVERLAY**

#6X32" EPOXY COATED TIE BARS DRILLED AND GROUTED INTO EXISTING PAVEMENT (TYPICAL)

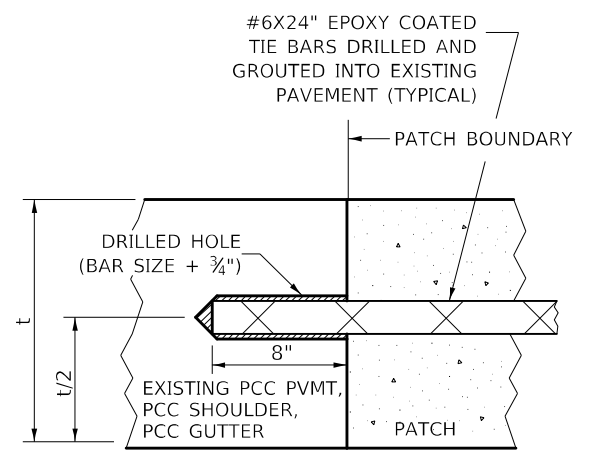


**WITH HMA OVERLAY**

#6X32" EPOXY COATED TIE BARS DRILLED AND GROUTED INTO EXISTING PAVEMENT (TYPICAL)

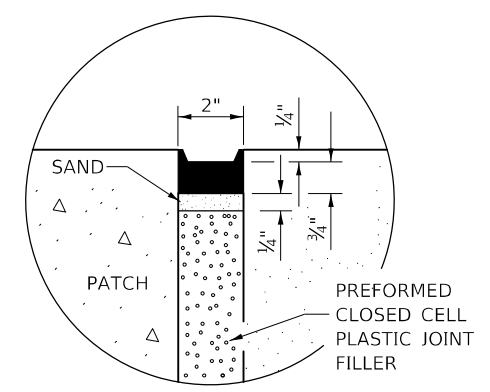


**SEALING DETAIL**



**LONGITUDINAL CONSTRUCTION JOINT**

PATCHES MORE THAN 20' IN LENGTH SHALL BE TIED TO ADJACENT PAVEMENT, PCC SHOULDERS OR PCC CURB AND GUTTER WITH #6x24" EPOXY COATED TIE BARS AT 36" CENTERS.



**SEALING DETAIL**

**CLASS A PATCH WITH EXPANSION JOINT**

**NOTES:**

- EXISTING LONGITUDINAL REINFORCEMENT SPACING; ±6 1/2".
- SPACING OF NEW LONGITUDINAL REINFORCEMENT AND NEW LONGITUDINAL TIE BARS SHALL MATCH SPACING OF EXISTING REINFORCEMENT AND SHALL BE TIED TOGETHER WITH A MINIMUM OF TWO TIES PER BAR.
- SUPPORT CHAIRS SHALL BE REQUIRED WHENEVER PATCH LENGTH EXCEEDS 6'-0"
- EVERY THIRD INTERSECTION MUST BE TIED. WHEN THE MINIMUM CLEARANCE CANNOT BE OBTAINED WITH THE TRANSVERSE REBAR ON TOP, THEN THE TRANSVERSE REBAR SHALL BE TIED TO THE BOTTOM OF THE LONGITUDINAL REBAR.
- VARIABLES WHERE S AND S ARE 2 1/2" MIN. AND 12" MAX.

MODEL: I:\MODEL\MHFE... FILE: MHFE... PROJECT: 12/16/2021

USER NAME = suix	DESIGNED -	REVISED -
DRAWN -	REVISID -	
PLOT SCALE = 40,0000 */ in.	CHECKED -	REVISID -
PLOT DATE = 12/16/2021	DATE -	REVISID -

STATE OF ILLINOIS  
DEPARTMENT OF TRANSPORTATION

CLASS A PATCHES (SPECIAL)

SCALE: SHEET 2 OF 2 SHEETS STA. TO STA.

F.A. RTE.	SECTION	COUNTY	TOTAL SHEETS	SHEET NO.
**	CM22-5015	*	18	18
* MCLEAN & DEWITT			CONTRACT NO. 70F67	
ILLINOIS FED. AID PROJECT				