

STATE OF ILLINOIS
DEPARTMENT OF TRANSPORTATION

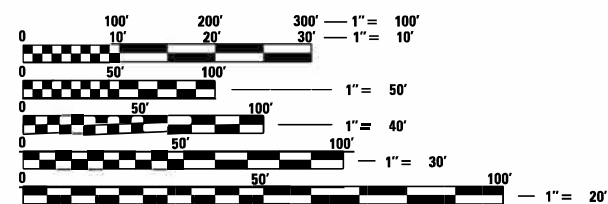
F.A.P. RTE.	SECTION	COUNTY	TOTAL SHEETS	SHEET NO.
320	(117)RS-10, (134)RS-9	LOGAN	28	1
		ILLINOIS	CONTRACT NO. 72M70	

INDEX OF SHEETS

- 1 COVER SHEET
- 2 GENERAL NOTES
- 3 - 6 SUMMARY OF QUANTITIES
- 7 - 9 SCHEDULES OF QUANTITIES
- 10 TYPICAL SECTIONS
- 11 - 21 PLAN SHEETS
- 22 - 28 DETAIL SHEETS

STANDARDS

- 000001-08 701006-05
- 001001-02 701201-05
- 001006 701301-04
- 442201-03 701306-04
- 542301-03 701311-03
- 630001-12 701326-04
- 630101-10 701501-06
- 631031-17 701901-08
- 630301-09 725001-01
- 642006-01 780001-05
- 701001-02 781001-04
- 420001-10 782006-01



FULL SIZE PLANS HAVE BEEN PREPARED USING STANDARD ENGINEERING SCALES. REDUCED SIZED PLANS WILL NOT CONFORM TO STANDARD SCALES. IN MAKING MEASUREMENTS ON REDUCED PLANS, THE ABOVE SCALES MAY BE USED.

J.U.L.I.E.
JOINT UTILITY LOCATION INFORMATION FOR EXCAVATORS
1-800-892-0123
OR 811

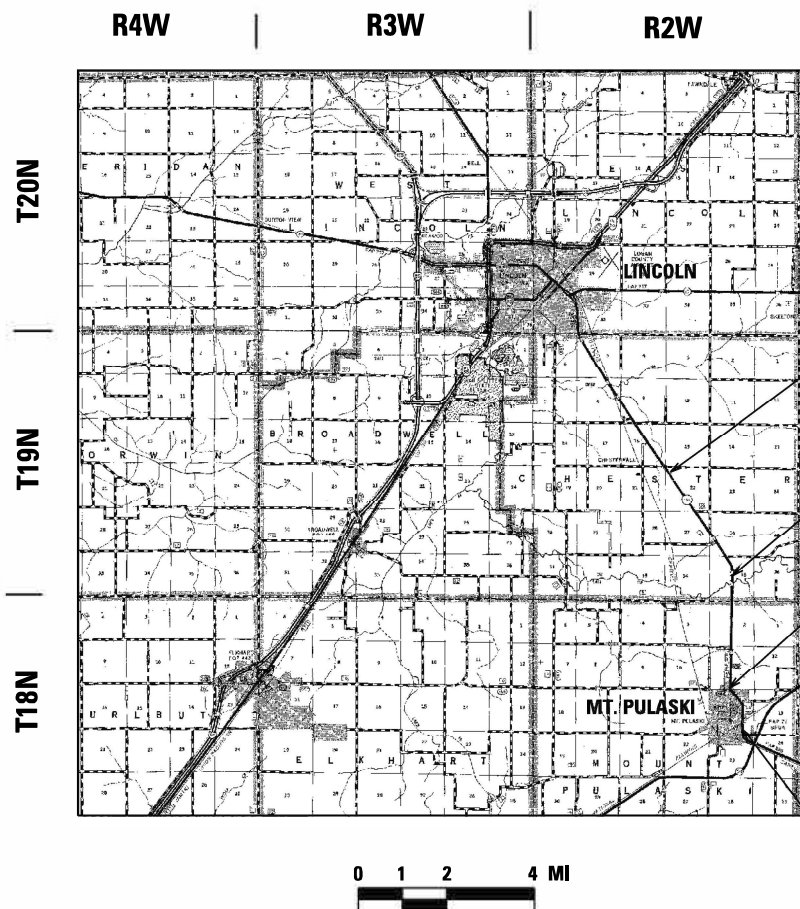
PROJECT ENGINEER: JON KELLEY
PROJECT MANAGER: BRIAN MINDER

CONTRACT NO. 72M70

**PROPOSED
HIGHWAY PLANS**

FAP ROUTE 320 (IL 121)
SECTION (117)RS-10, (134)RS-9
PROJECT NHPP-HSIP-7BFM(534)
3P RESURFACING
LOGAN COUNTY

C-96-042-21



BEGIN SECTION (117)RS-10, (134)RS-9
STA. 129 + 24.42 IL 121

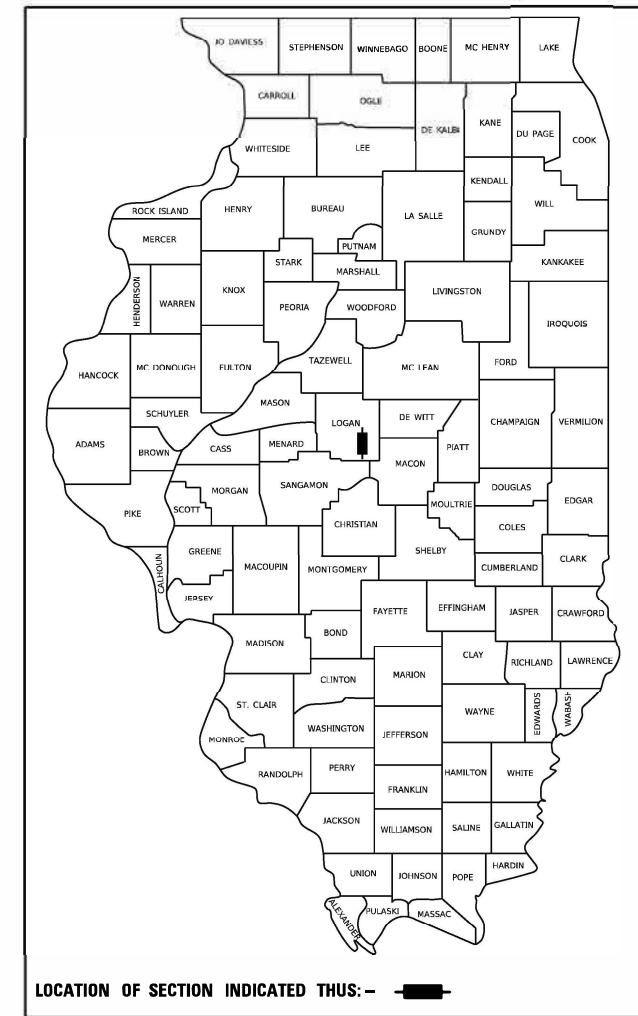
BRIDGE OMISSION:
STA. 276 + 81.00 TO
STA. 282 + 92.80
SN 054-0021

STA. EQUATION
STA. 405 + 21.91 BK =
STA. 499 + 76.25 AH

END SECTION (117)RS-10, (134)RS-9
STA. 548 + 06.00 IL 121

GROSS LENGTH = 31,437.24 FT. = 5.954 MILE
NET LENGTH = 30,764.94 FT. = 5.827 MILE

D-96-023-21



LOCATION OF SECTION INDICATED THUS: - [black rectangle] -

FUNCTIONAL CLASSIFICATION:
OTHER PRINCIPAL ARTERIAL
ADT = 4,180 (2019)
MU = 486 (2019), SU = 268 (2019), PV = 3,426 (2019)

STATE OF ILLINOIS
DEPARTMENT OF TRANSPORTATION

SUBMITTED December 21, 2021

[Signature]
REGIONAL ENGINEER

February 4, 2022
[Signature]
ENGINEER OF DESIGN AND ENVIRONMENT

February 4, 2022
[Signature]
DIRECTOR OF HIGHWAYS PROJECT IMPLEMENTATION 2

PRINTED BY THE AUTHORITY
OF THE STATE OF ILLINOIS

GENERAL NOTES:

1. THE CONTRACTOR SHALL NOTIFY THE DISTRICT 6 BUREAU OF OPERATIONS AT (217) 785-5306 THREE (3) WEEKS PRIOR TO IMPLEMENTING ANY TRAFFIC CONTROL.
2. THE DISTRICT 6 BUREAU OF OPERATIONS SHALL BE NOTIFIED BY PHONE (217) 785-5306 AT LEAST 14 DAYS PRIOR TO PLACEMENT OF FINAL PAVEMENT MARKINGS.

COMMITMENTS

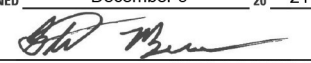
RATES OF APPLICATION


BIUMINOUS MATERIAL (TACK COAT)	0.05 POUNDS / SQ FT MAINLINE 0.025 POUNDS / SQ FT MAINLINE BETWEEN LIFTS 0.25 POUNDS / SQ FT FOR AGGREGATE SURFACES
HOT-MIX ASPHALT COURSES	112 POUNDS / SQ YD - INCH THICKNESS
NITROGEN FERTILIZER NUTRIENT	90 LB/ACRE
PHOSPHORUS FERTILIZER NUTRIENT	90 LB/ACRE
POTASSIUM FERTILIZER NUTRIENT	90 LB/ACRE
MULCH, METHOD 2	2.0 TONS/ACRE
AGRICULTURAL GROUND LIMESTONE	2.0 TONS/ACRE

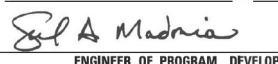
MIXTURE REQUIREMENTS

MIXTURE USES:	HMA SURFACE COURSE	HMA BINDER COURSE	HMA SHOULDER (LOWER LIFT)	HMA SHOULDER (TOP LIFT) AND INCIDENTAL HMA	PAVEMENT PATCHING
PG:	SBS PG 64-28	PG 64-22	PG 64-22	PG 64-22	PG 64-22
DESIGN AIR VOIDS:	4.0% @ N50	4.0% @ N50	4.0% @ N50	4.0% @ N50	4.0% @ N50
MIXTURE COMPOSITION:	IL-9.5	IL-9.5 FG	IL-19.0	IL-9.5	IL-19.0
FRICTION AGGREGATE:	MIX "C"	N/A	N/A	MIX "C"	N/A
MIXTURE WEIGHT:	112 LB / SQ YD-INCH	112 LB / SQ YD-INCH	112 LB / SQ YD-INCH	112 LB / SQ YD-INCH	112 LB / SQ YD-INCH
QUALITY MANAGEMENT:	QCP	QCP	QC/QA	QC/QA	QC/QA
SUBLOT SIZE:	1000 TONS	1000 TONS	N/A	N/A	N/A
MTD REQD:	YES	NO	NO	NO	NO

**STATE OF ILLINOIS
DEPARTMENT OF TRANSPORTATION
DIVISION OF HIGHWAYS
DISTRICT 6**

EXAMINED December 3 20 21

ENGINEER OF OPERATIONS

EXAMINED December 8 20 21

ENGINEER OF PROJECT IMPLEMENTATION

EXAMINED December 15 20 21

ENGINEER OF PROGRAM DEVELOPMENT

M:\REL - Default - p\plottest.pw.bentley.com\P\WID\Documents\DOT - Offices\District 6\Projects\0672M70\CADD\DATA\CAD\sheet\0672M70.dwg:ht:generate.dgn

CODE NO.	ITEM	UNIT	TOTAL QUANTITY	PPS NO: 6-01102-0000	PPS NO: 6-01102-0100
				80% FEDERAL 20% STATE	90% FEDERAL 10% STATE
				IL 121 RDWY 0005	IL 121 RDWY 0021
				RURAL	SAFETY
20400800	FURNISHED EXCAVATION	CU YD	100	100	
21400100	GRADING AND SHAPING DITCHES	FOOT	100	100	
35800100	PREPARATION OF BASE	SQ YD	208	208	
40200800	AGGREGATE SURFACE COURSE, TYPE B	TON	45	45	
40600290	BITUMINOUS MATERIALS (TACK COAT)	POUND	68,764	57,271	11,493
40600370	LONGITUDINAL JOINT SEALANT	FOOT	31,834	31,834	
40600982	HOT-MIX ASPHALT SURFACE REMOVAL - BUTT JOINT	SQ YD	4,691	4,691	
40600985	PORTLAND CEMENT CONCRETE SURFACE REMOVAL - BUTT JOINT	SQ YD	115	115	
40600990	TEMPORARY RAMP	SQ YD	524	524	
40602965	HOT-MIX ASPHALT BINDER COURSE, IL-9.5FG, N50	TON	5,933	5,933	
40604150	POLYMERIZED HOT-MIX ASPHALT SURFACE COURSE, IL-9.5, MIX "C", N50	TON	7,136	7,136	
40800029	BITUMINOUS MATERIALS (TACK COAT)	POUND	2,159	2,159	
40800050	INCIDENTAL HOT-MIX ASPHALT SURFACING	TON	607	607	
44000155	HOT-MIX ASPHALT SURFACE REMOVAL, 1 1/2"	SQ YD	59,342	59,342	

MODEL: Default
 FILE: Model - pwwildcat.pwwildcat.com.PWID01Documents\DOT Office\Director - 6\Projects\0672M70\CAD\Drawings\CAD\Sheet\0672M70.dwg: 5/01/2021

USER NAME = mindrbt	DESIGNED - _____	REVISED - _____
DRAWN - _____	REVISIONS - _____	
PLOT SCALE = 20.0000" / 1'	CHECKED - _____	REVISIONS - _____
PLOT DATE = 12/28/2021	DATE - _____	REVISIONS - _____

**STATE OF ILLINOIS
DEPARTMENT OF TRANSPORTATION**

SUMMARY OF QUANTITIES

SCALE: N/A SHEET 1 OF 4 SHEETS STA. N/A TO STA. N/A

F.A.P. RTE.	SECTION	COUNTY	TOTAL SHEETS	SHEET NO.
320	(117)RS-10, (134)RS-9	LOGAN	28	3
				CONTRACT NO. 72M70
				ILLINOIS FED. AID PROJECT

CODE NO.	ITEM	UNIT	TOTAL QUANTITY	PPS NO: 6-01102-0000	PPS NO: 6-01102-0100
				80% FEDERAL	90% FEDERAL
				20% STATE	10% STATE
				IL 121 RDWY 0005 RURAL	IL 121 RDWY 0021 SAFETY
44000160	HOT-MIX ASPHALT SURFACE REMOVAL, 2 3/4"	SQ YD	25,566	25,566	
44200192	PAVEMENT PATCHING, TYPE II, 16 INCH	SQ YD	300	300	
44200196	PAVEMENT PATCHING, TYPE III, 16 INCH	SQ YD	60	60	
44200198	PAVEMENT PATCHING, TYPE IV, 16 INCH	SQ YD	60	60	
48102100	AGGREGATE WEDGE SHOULDER, TYPE B	TON	1,228	1,228	
48203023	HOT-MIX ASPHALT SHOULDERS, 6 1/2"	SQ YD	25,748		25,748
48203100	HOT-MIX ASPHALT SHOULDERS	TON	2,145		2,145
50104400	CONCRETE HEADWALL REMOVAL	EACH	2	2	
50800105	REINFORCEMENT BARS	POUND	46	46	
54213675	PRECAST REINFORCED CONCRETE FLARED END SECTIONS 30"	EACH	2	2	
542A1075	PIPE CULVERTS, CLASS A, TYPE 2, 30"	FOOT	13	13	
54248510	CONCRETE COLLAR	CU YD	1.2	1.2	
* 63000001	STEEL PLATE BEAM GUARDRAIL, TYPE A, 6' POSTS	FOOT	675	675	
* 63000030	STRONG POST GUARDRAIL ATTACHED TO CULVERT	FOOT	125	125	

* SPECIALTY ITEM

M:\REL_Default\FILE_Mobile\pwwildcat.pwwildcat.com\PROJECTS\DOT\Office\Director\6\Projects\06727470\CADD\DATA\CAD\Sheet\06727470.dwg

USER NAME = mindert	DESIGNED - _____	REVISED - _____
PLOT SCALE = 20.0000 "/ft.	CHECKED - _____	REVISED - _____
PLOT DATE = 12/28/2021	DATE - _____	REVISED - _____

**STATE OF ILLINOIS
DEPARTMENT OF TRANSPORTATION**

SUMMARY OF QUANTITIES

SCALE: N/A SHEET 2 OF 4 SHEETS STA. N/A TO STA. N/A

F.A.P. RTE.	SECTION	COUNTY	TOTAL SHEETS	SHEET NO.
320	(117)RS-10, (134)RS-9	LOGAN	28	4
			CONTRACT NO. 72M70	
			ILLINOIS FED. AID PROJECT	

CODE NO.	ITEM	UNIT	TOTAL QUANTITY	PPS NO: 6-01102-0000	PPS NO: 6-01102-0100
				80% FEDERAL 20% STATE	90% FEDERAL 10% STATE
				IL 121 RDWY 0005 RURAL	IL 121 RDWY 0021 SAFETY
* 63100085	TRAFFIC BARRIER TERMINAL, TYPE 6	EACH	4	4	
* 63100167	TRAFFIC BARRIER TERMINAL, TYPE 1 (SPECIAL) TANGENT	EACH	8	8	
63200310	GUARDRAIL REMOVAL	FOOT	1,800	1,800	
64200108	SHOULDER RUMBLE STRIPS, 8"	FOOT	42,471		42,471
67000400	ENGINEERS FIELD OFFICE, TYPE A	CAL MO	8	8	
67100100	MOBILIZATION	L SUM	1	1	
70100450	TRAFFIC CONTROL AND PROTECTION STANDARD 701201	L SUM	1	1	
70100460	TRAFFIC CONTROL AND PROTECTION STANDARD 701306	L SUM	1	1	
70100500	TRAFFIC CONTROL AND PROTECTION STANDARD 701326	L SUM	1		1
70102620	TRAFFIC CONTROL AND PROTECTION STANDARD 701501	L SUM	1	1	
70107025	CHANGEABLE MESSAGE SIGN	CAL DA	14	14	
70300100	SHORT-TERM PAVEMENT MARKING	FOOT	9,568	9,568	
70300150	SHORT-TERM PAVEMENT MARKING REMOVAL	SQ FT	3,157	3,157	
* 72501000	TERMINAL MARKER - DIRECT APPLIED	EACH	8	8	

* SPECIALTY ITEM

REV. - MS

MODEL: D:\infocad\... FILE NAME: P:\infocad\... PROJECT: ...

USER NAME = min#erbt	DESIGNED -	REVISED -
DRAWN -	DRAWN -	REVISED -
PLT SCALE = 20.0000' / in.	CHECKED -	REVISED -
PLT DATE = 12/28/2021	DATE -	REVISED -

**STATE OF ILLINOIS
DEPARTMENT OF TRANSPORTATION**

SUMMARY OF QUANTITIES

SCALE: N/A SHEET 3 OF 4 SHEETS STA. N/A TO STA. N/A

F.A.P. RTE.	SECTION	COUNTY	TOTAL SHEETS	SHEET NO.
320	(117)RS-10, (134)RS-9	LOGAN	28	5
			CONTRACT NO. 72M70	
			ILLINOIS FED. AID PROJECT	

CODE NO.	ITEM	UNIT	TOTAL QUANTITY	PPS NO: 6-01102-0000	PPS NO: 6-01102-0100
				80% FEDERAL 20% STATE	90% FEDERAL 10% STATE
				IL 121 RDWY 0005	IL 121 RDWY 0021
				RURAL	SAFETY
* 78009000	MODIFIED URETHANE PAVEMENT MARKING - LETTERS & SYMBOLS	SQ FT	31	31	
* 78009005	MODIFIED URETHANE PAVEMENT MARKING - LINE 5"	FOOT	90,037	90,037	
* 78009006	MODIFIED URETHANE PAVEMENT MARKING - LINE 6"	FOOT	100	100	
* 78100100	RAISED REFLECTIVE PAVEMENT MARKER	EACH	398	398	
* 78200005	GUARDRAIL REFLECTORS, TYPE A	EACH	20	20	
78300200	RAISED REFLECTIVE PAVEMENT MARKER REMOVAL	EACH	398	398	
X2020060	EXCAVATING AND GRADING EXISTING SHOULDER (SPECIAL)	UNIT	575		575
Z0034105	MATERIAL TRANSFER DEVICE	TONS	7,136	7,136	
∅ 20076600	TRAINEES	HOUR	2,000	2,000	
∅ 20076604	TRAINEES TRAINING PROGRAM GRADUATE	HOUR	2,000	2,000	

* SPECIALTY ITEM

∅ 0042

REV. - MS

M:\REL - Default - P:\MIDOT\Documents\DOT - Offices\District 6\Projects\0672M70\CAD\Drawings\CAD\Sheet\0672M70-411-500.dgn

USER NAME = minderbt	DESIGNED - _____	REVISED - _____	STATE OF ILLINOIS DEPARTMENT OF TRANSPORTATION	SUMMARY OF QUANTITIES				F.A.P. RTE.	SECTION	COUNTY	TOTAL SHEETS	SHEET NO.
PLOT SCALE = 20.0000' / 1"	DRAWN - _____	REVISED - _____		320	(117)RS-10, (134)RS-9	LOGAN	28	6				
PLOT DATE = 12/28/2021	CHECKED - _____	REVISED - _____						CONTRACT NO. 72M70				
	DATE - _____	REVISED - _____		SCALE: N/A	SHEET 4 OF 4 SHEETS	STA. N/A	TO STA. N/A	ILLINOIS FED. AID PROJECT				

GUARDRAIL SCHEDULE

STA.			STA.		LENGTH (FOOT)	63000001 SPBGR, TY A, 6' POSTS (FOOT)	78200005 GR REFL, TY A (EACH)	72501000 TERM MKER- DIR APPLD (EACH)	63100167 TBT TY 1 (SPCL) TANGENT (EACH)	63100085 TBT TY 6 (EACH)	63200310 GR REM (FOOT)	63000030 STRONG POST GR ATTACH TO CULV
IL 121 RT												
266+12.50	RT	to	266+62.50	RT	50.0		1	1	1			
266+62.50	RT	to	268+00.00	RT	137.5	137.5	2					
268+00.00	RT	to	268+62.50	RT	62.5		1			475.0	62.5	
268+62.50	RT	to	269+37.50	RT	75.0	75.0	1					
269+37.50	RT	to	269+87.50	RT	50.0		1	1	1			
IL 121 LT												
275+14.90	RT	to	275+64.90	RT	50.0		1	1	1			
275+64.90	RT	to	276+64.90	RT	100.0	100.0	1			250.0		
276+64.90	RT	to	277+01.80	RT	36.9		1			1		
282+72.00	RT	to	283+08.90	RT	36.9		1			1		
283+08.90	RT	to	283+33.90	RT	25.0	25.0	1			175.0		
283+33.90	RT	to	283+83.90	RT	50.0		1	1	1			
266+75.00	LT		267+25.00	LT	50.0		1	1	1			
267+25.00	LT		268+00.00	LT	75.0	75.0	1					
268+00.00	LT		268+62.50	LT	62.5		1			475.0	62.5	
268+62.50	LT		270+00.00	LT	137.5	137.5	2					
270+00.00	LT		270+50.00	LT	50.0		1	1	1			
275+89.90	LT		276+39.90	LT	50.0		1	1	1			
276+39.90	LT		276+64.90	LT	25.0	25.0	1			175.0		
276+64.90	LT		277+01.80	LT	36.9		1			1		
282+71.40	LT		283+08.30	LT	36.9		1			1		
283+08.30	LT		284+08.30	LT	100.0	100.0	1			250.0		
284+08.30	LT		284+58.30	LT	50.0		1	1	1			
TOTAL=						675.0	20	8	8	4	1,800.0	125.0

MODEL: Definit
 FILE: 12/30/2021 12:30:21 PM
 PROJECT: C:\Users\jrburke\OneDrive\Documents\123021\123021\123021.dwg
 USER: jrburke

REV. - MS

DRAINAGE SCHEDULE

STA.	20400800 FURNISHED EXCAVATION (CU YD)	21400100 GRADING AND SHAPING DITCHES (FOOT)	5010440 CONC HDWL REM (EACH)	50800105 REINFORCEMENT BARS (POUND)	54213675 PRECAST REINF CONC FLRD END SECTION (EACH)	542A1075 PIPE CULV, CLASS A, TY 2, 30" (FOOT)	54248510 CONC COLLAR (CU YD)
IL 121							
249+98.48	100	100	2	46	2	13	1.2
	100	100	2	46	2	13	1.2

SEEDING SCHEDULE (NOT FOR PAYMENT)

STA.	SEEDING CLASS 2 (ACRE)	NITROGEN FERTILIZER NUTRIENT (POUND)	PHOSPHORUS FERTILIZER NUTRIENT (POUND)	POTASSIUM FERTILIZER NUTRIENT (POUND)	AGRICULTURAL GROUND LIMESTONE (TONS)	MULCH METHOD 2 (TONS)
249+98.48	0.1	9	9	9	0.2	0.2

STRIPING SCHEDULE

STA.			NB CONDITION	SB CONDITION	LENGTH (FOOT)	78009005 MOD URETH PVT MKG - LINE 5" (FOOT)		78009006 MOD URETH PVT MKG - LINE 6" (FOOT)	78009000 MOD URETH PVT MKG - LET& SYMB (SQ FT)	70300100 SHORT-TERM PVT MKG (FOOT)	70300150 SHORT-TERM PVT MKG (SQ FT)	78100100 RAISED REFL PVT MKR (EACH)	78300200 RAISED REFL PVT MKR (EACH)	
						WHITE	YELLOW							
US 51 /IL 16														
129+00.00	to	195+20.00	PASS	PASS	6,620	13,240	1,655			1,986	655	83	83	
195+20.00	to	201+70.00	PASS	NO PASS	650	1,300	813			195	64	8	8	
201+70.00	to	210+80.00	NO PASS	PASS	910	910	1,138			273	90	11	11	
210+80.00	to	225+30.00	PASS	PASS	1,450	2,900	363			435	144	18	18	
225+30.00	to	234+00.00	PASS	NO PASS	870	1,740	1,088			261	86	11	11	
234+00.00	to	263+00.00	NO PASS	NO PASS	2,900	5,800	5,800			870	287	36	36	
263+00.00	to	273+30.00	NO PASS	PASS	1,030	2,060	1,288			309	102	13	13	
273+30.00	to	276+81.00	PASS	PASS	351	702	88			105	35	4	4	
BR OMISSION														
			PASS	PASS		1,224	153							
282+92.80	to	294+25.00	PASS	PASS	1,132	2,264	283			340	112	14	14	
294+25.00	to	298+70.00	PASS	NO PASS	445	890	556			134	44	6	6	
298+70.00	to	303+00.00	NO PASS	NO PASS	430	860	860			129	43	5	5	
303+00.00	to	310+40.00	NO PASS	PASS	740	1,480	925			222	73	9	9	
310+40.00	to	358+50.00	PASS	PASS	4,810	9,620	1,203			1,443	476	60	60	
358+50.00	to	366+50.00	PASS	NO PASS	800	1,600	1,000			240	79	10	10	
366+50.00	to	367+80.00	PASS	PASS	130	260	33			39	13	2	2	
367+80.00	to	379+75.00	NO PASS	PASS	1,195	2,390	1,494	100	31	359	118	15	15	
379+75.00	to	405+21.91	BK	PASS	2,547	5,094	637			764	252	32	32	
STA EQ														
499+76.25	AH	to	515+15.00	PASS	PASS	1,539	3,078	385		462	152	19	19	
515+15.00		to	519+10.00	PASS	NO PASS	395	790	494		127	42	5	5	
519+10.00		to	548+06.00	NO PASS	NO PASS	2,896	5,792	5,792		877	289	36	36	
TOTAL=						90,037	100	31	9,568	3,157	398	398		

STATE OF ILLINOIS
DEPARTMENT OF TRANSPORTATION

SCHEDULES OF QUANTITIES

USER NAME = min#erbt	DESIGNED -	REVISED -
DRAWN -	REVISIONS -	
PLLOT SCALE = 20.0000' / in.	CHECKED -	REVISED -
PLLOT DATE = 12/30/2021	DATE -	REVISED -

SCALE: N/A SHEET 2 OF 3 SHEETS STA. N/A T.O. STA. N/A

F.A.P. RTE.	SECTION	COUNTY	TOTAL SHEETS	SHEET NO.
320	(117)RS-10, (134)RS-9	LOGAN	28	8
CONTRACT NO. 72M70				
ILLINOIS FED. AID PROJECT				

ENTRANCE & SIDEROAD SCHEDULE

STA.	ENTRANCE TYPE	LENGTH	35800100 PREPARATION OF BASE (SQ YD)	40600982 HMA SURF REM - BUTT JOINT (SQ YD)	40600985 PCC SURF REM - BUTT JOINT (SQ YD)	40600990 TEMP RAMP (SQ YD)	40800029 BIT MATLS (TACK COAT) (POUND)	40800050 INCIDENTAL HMA SURF (TON)	40200800 AGGR SURF CSE, TY B (TON)
IL 121									
178+89.00	RT AGGR PE	38	5	15			7	2	2
211+84.00	RT AGGR CE	46	24	26			12	3	2
213+51.00	RT AGGR PE	42	3	15			7	2	2
218+02.00	RT AGGR PE	50		19			8	2	2
224+51.00	RT SIDE RD	75		153		24	69	19	
227+68.00	RT HMA MB	56	5	14			6	2	
234+39.00	RT HMA PE	84		54			25	7	
299+59.00	RT SIDE RD	86		146		24	66	18	
301+24.00	RT AGGR PE	40		41			18	5	
302+27.00	RT AGGR PE	36		36			16	5	
303+22.00	RT AGGR PE	44		45			20	6	
304+45.00	RT HMA PE	38		34			15	4	
304+84.00	RT CONC PE	40			39		18	5	
305+64.00	RT AGGR PE	46		20			9	3	2
306+10.00	RT HMA PE	50		43			19	5	
307+56.00	RT AGGR PE	64		44			20	6	
309+61.00	RT AGGR PE	40		32			14	4	
310+12.00	RT AGGR PE	50		32			14	4	
335+32.00	RT HMA MB	56		14			6	2	
340+07.00	RT HMA MB	56		14			6	2	
344+79.00	RT AGGR PE	44	9	15			7	2	2
353+15.00	RT HMA MB	56		14			6	2	
356+20.00	RT SIDE RD	42		41		24	18	5	
389+94.00	RT AGGR CE	54		28			13	4	
391+64.00	RT HMA MB	56		14			6	2	
393+74.00	RT HMA PE	55		46			21	6	
394+41.00	RT HMA PE	55		14			6	2	
395+23.00	RT HMA PE	46		15			7	2	
395+83.00	RT HMA PE	46		15			7	2	
396+60.00	RT HMA MB	56		17			8	2	
398+97.00	RT HMA CE	37		14			6	2	
399+28.00	RT HMA CE	37		14			6	2	
401+62.00	RT HMA PE	50	7	21			9	3	
403+47.00	RT AGGR PE	48		19			9	3	
STA EQ									
500+03.00	RT SIDE RD	132		665		24	300	84	
500+27.00	RT SIDE RD	246		446		24	200	56	
505+28.00	RT HMA CE	58		30			14	4	
506+27.00	RT HMA CE	64		34			16	2	
506+96.00	RT HMA CE	56		28			13	4	
509+26.00	RT CONC CE	70		38			17	5	
512+84.00	RT AGGR CE	54		27			12	3	2
514+97.00	RT AGGR CE	95		54			24	7	4
516+54.00	RT AGGR CE	64		33			15	4	2
518+09.00	RT AGGR CE	76		42			19	5	3
519+48.00	RT SIDE RD	200		291		24	131	37	
525+16.00	RT SIDE RD	52		65		24	29	8	
526+47.00	RT HMA CE	54	9	27			12	3	
528+25.00	RT AGGR PE	46	10	16			7	2	2
528+92.00	RT SIDE RD	68		96		24	43	12	
530+30.00	RT AGGR PE	38		14			6	2	2
532+68.00	RT SIDE RD	64		80		24	36	10	
536+48.00	RT SIDE RD	69		96		24	43	12	
537+83.00	RT AGGR PE	42	14	13			6	2	2
TOTALS=									

ENTRANCE & SIDEROAD SCHEDULE

STA.	ENTRANCE TYPE	LENGTH	35800100 PREPARATION OF BASE (SQ YD)	40600982 HMA SURF REM - BUTT JOINT (SQ YD)	40600985 PCC SURF REM - BUTT JOINT (SQ YD)	40600990 TEMP RAMP (SQ YD)	40800029 BIT MATLS (TACK COAT) (POUND)	40800050 INCIDENTAL HMA SURF (TON)	40200800 AGGR SURF CSE, TY B (TON)
141+36.00	LT HMA PE	44	5	14			6	2	
144+25.00	LT HMA PE	48	5	14			6	2	
179+84.00	LT SIDE RD	76		124		24	56	16	
181+34.00	LT HMA PE	50	3	17			8	2	
210+17.00	LT SIDE RD	60	37	81		24	37	10	
228+15.00	LT AGGR PE	46	6	14			6	2	2
244+53.00	LT SIDE RD	106		231		24	104	29	
286+67.00	LT AGGR CE	66	7	34			15	4	2
299+59.00	LT SIDE RD	84		138		24	62	17	
310+23.00	LT AGGR PE	46	8	14			6	2	2
335+30.00	LT AGGR PE	46	6	14			6	2	2
340+12.00	LT AGGR PE	44	8	14			6	2	2
353+22.00	LT HMA PE	44		14			6	2	
375+39.00	LT HMA CE	100		146		18	66	18	
375+73.00	LT HMA CE	254		426		18	192	54	
391+64.00	LT AGGR PE	52	8	18			8	2	2
392+64.00	LT HMA PE	46	8	14			6	2	
396+81.00	LT HMA CE	50	10	25			11	3	
404+92.00	LT HMA PE	46	6	14			6	2	
STA EQ									
508+23.00	LT CONC CE	54			26		12	3	
514+36.00	LT AGGR CE	54		28			13	4	2
518+86.00	LT CONC CE	84	5		50		22	6	
519+44.00	LT SIDE RD	60		99		24	44	12	
537+59.00	LT AGGR CE	45		19			8	2	2
TOTALS=		4,872	208	4,691	115	396	2,159	607	45

REMOVAL SCHEDULE

STA.	STA.	LENGTH (FOOT)	44000155 HMA SURF REM, 1 1/2" (SQ YD)	44000160 HMA SURF REM, 2 3/4" (SQ YD)
IL 121				
128+99.40	to 235+50.00	10,651	28,402	
235+50.00	to 245+56.20	1,006		2,683
245+56.20	to 276+81.00	3,125	8,333	
BR OMISSION				
282+92.80	to 293+28.50	1,036	2,762	
293+28.50	to 300+30.30	702		1,871
300+30.30	to 374+72.30	7,442	19,845	
374+72.30	to 378+79.40	407		1,086
378+79.40	to 405+21.91	BK 2,643		1,041
STA EQ				
499+76.25	AH to 513+75.00	1,399		3,730
513+75.00	to 527+75.00	1,400		3,733
527+75.00	to 537+31.10	956		2,550
537+31.10	to 548+06.00	1,075		2,866
TOTAL=			59,342	25,566

MODEL - Default
 FILE - Model - P:\miller_paw_bentley.com\PWD\DOT\Documents\DOT - Office\Director - 6\Projects\057270\CAD\Drawings\DOT\7270_dht_schedule.dgn

USER NAME = milderbt	DESIGNED - _____	REVISED - _____
DRAWN - _____	REVISIONS - _____	
PLOT SCALE = 20.0000' / 1"	CHECKED - _____	REVISED - _____
PLOT DATE = 12/28/2021	DATE - _____	REVISED - _____

**STATE OF ILLINOIS
DEPARTMENT OF TRANSPORTATION**

SCHEDULES OF QUANTITIES

SCALE: N/A SHEET 3 OF 3 SHEETS STA. N/A TO STA. N/A

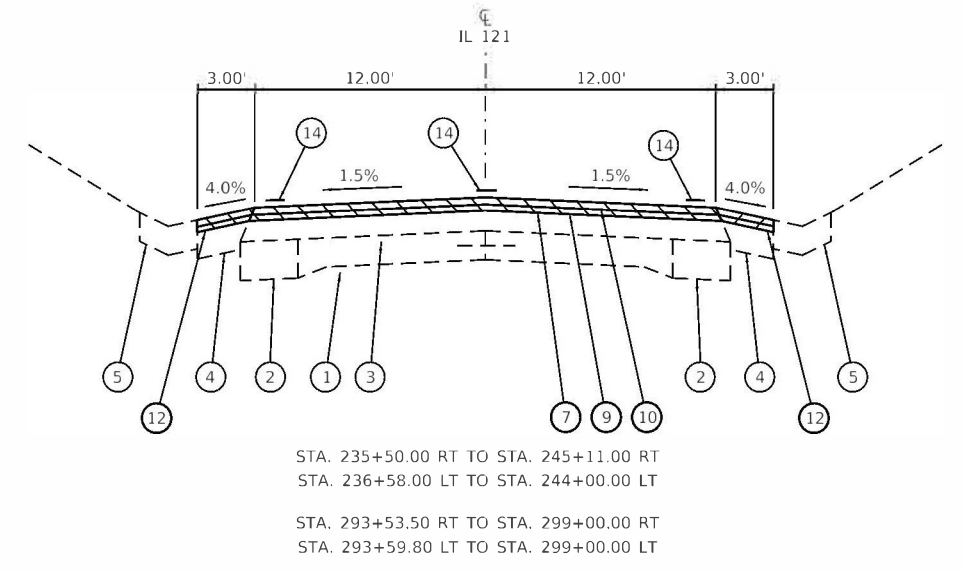
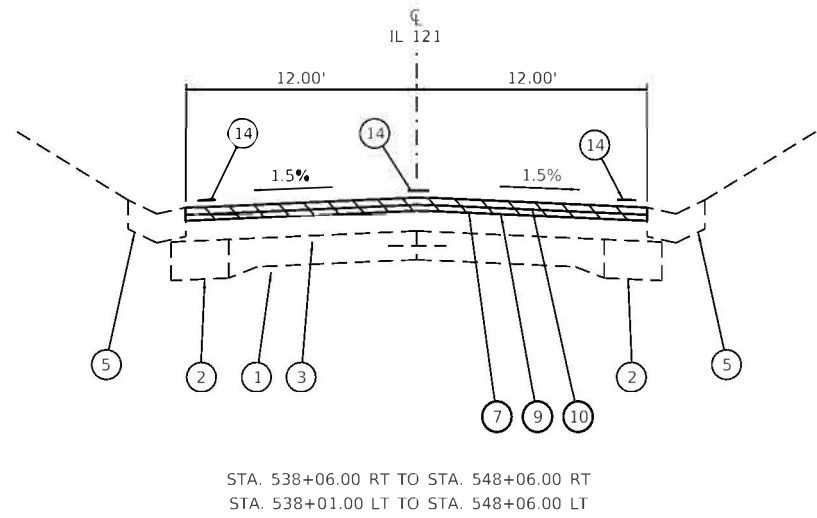
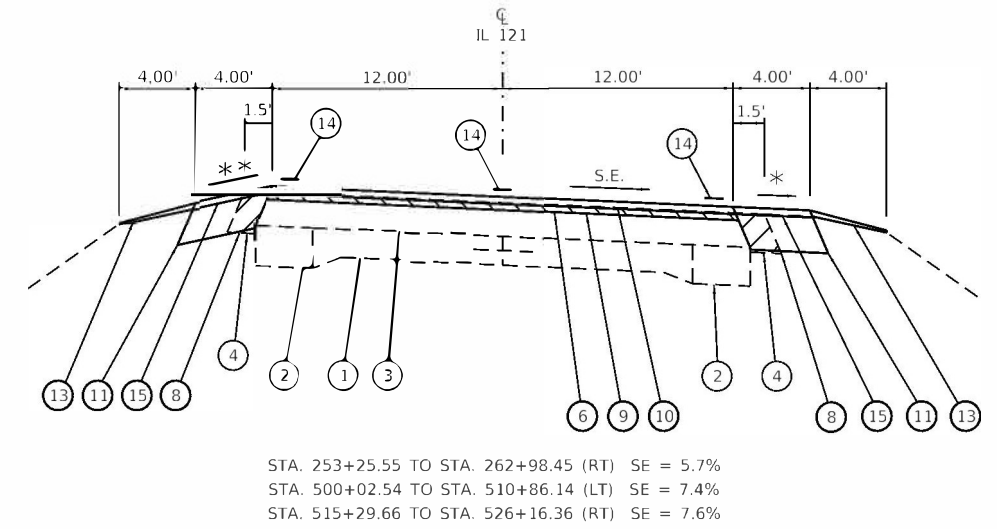
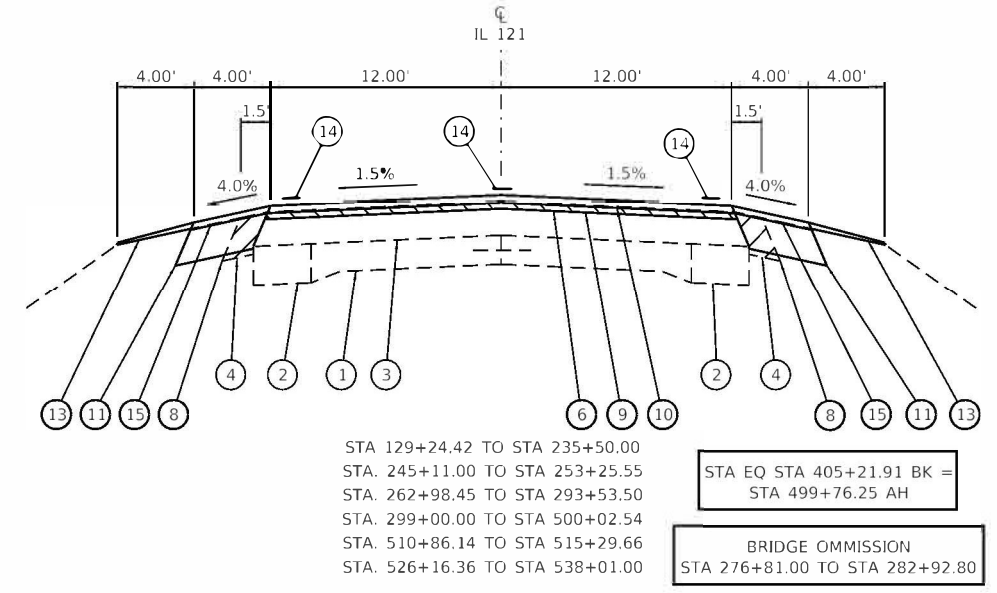
F.A.P. RTE.	SECTION	COUNTY	TOTAL SHEETS	SHEET NO.
320	(117)R5-10, (134)R5-9	LOGAN	28	9
CONTRACT NO. 72M70				
ILLINOIS FED. AID PROJECT				

MODEL: Definit
 FILE: I:\state\proj\117\117000\117000.dwg
 USER: min@erbt
 PLOT DATE: 12/28/2021

LEGEND

- ① EXIST 9-6-9 PCC PAVEMENT
- ② EXIST PCC WIDENING, 9"
- ③ EXIST HMA OVERLAY, 9"
- ④ EXIST HMA SHOULDER, 8"
- ⑤ EXIST CONCRETE GUTTER
- ⑥ PROP HMA SURFACE REMOVAL, 1 1/2"
- ⑦ PROP HMA SURFACE REMOVAL, 2 3/4"
- ⑧ PROP EXCAVATING AND GRADING EXISTING SHOULDER (SPECIAL)
- ⑨ PROP HMA BINDER COURSE, IL-9.5FG, N50, 1 1/4"
- ⑩ PROP POLYMERIZED HMA SURFACE COURSE, IL-9.5, N50, 1 1/2"
- ⑪ PROP HMA SHOULDERS, 6 1/2"
- ⑫ PROP HMA SHOULDERS 2 3/4" (TONS) (2 LIFTS)
- ⑬ PROP AGGREGATE WEDGE SHOULDERS, TY B
- ⑭ PROP PAVEMENT STRIPING
- ⑮ PROP HMA SHOULDERS, 1 1/2" (TONS)

SHOULDER SLOPE EQUALS:
 * 4% < SE < 8%
 ** 4% > (8% - SE) > 2%



REV. - MS

USER NAME = min@erbt	DESIGNED -	REVISED -
DRAWN -	REVISIONS -	
PLT SCALE = 10.0000' / in.	CHECKED -	REVISED -
PLT DATE = 12/28/2021	DATE -	REVISED -

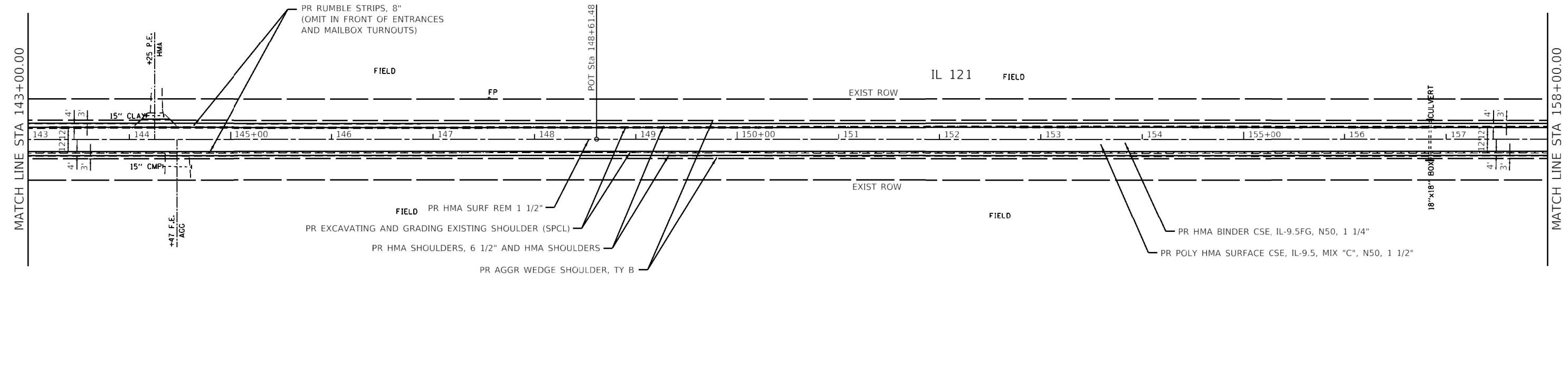
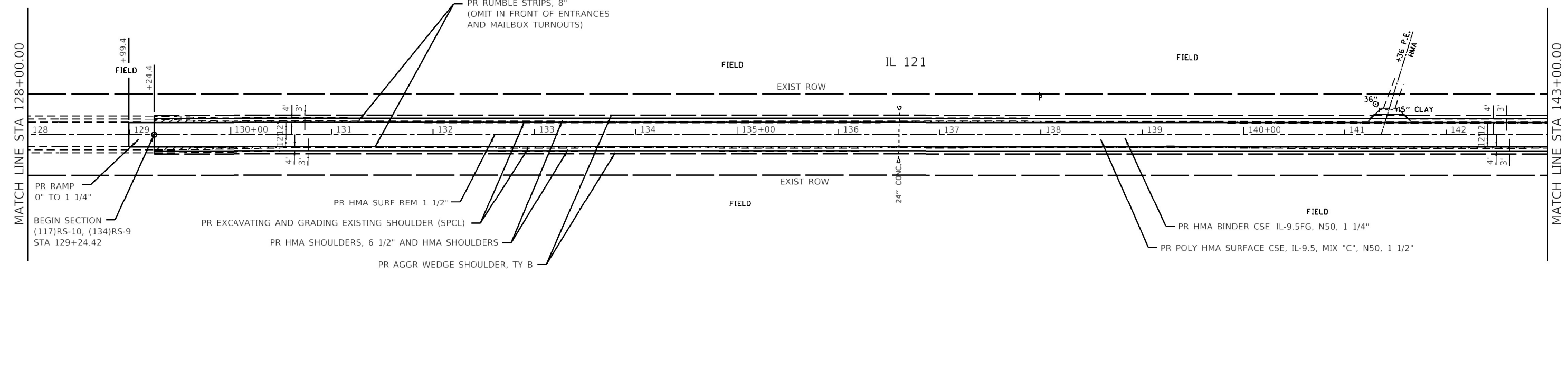
**STATE OF ILLINOIS
 DEPARTMENT OF TRANSPORTATION**

TYPICAL SECTIONS

SCALE: N/A SHEET 1 OF 1 SHEETS STA. N/A TO STA. N/A

F.A.P. RTE.	SECTION	COUNTY	TOTAL SHEETS	SHEET NO.
320	(117)RS-10, (134)RS-9	LOGAN	28	10
CONTRACT NO. 72M70				
ILLINOIS FED. AID PROJECT				

MODEL: Default
 FILE: Model - pw\pwwildcat.pw\berkeley.com\PWIDOT\Documents\DOT_Civil\Drawings\CD\Drawings\72M70_112.dwg



USER NAME = minderbt	DESIGNED - _____	REVISED - _____
DRAWN - _____	REVISED - _____	
PLOT SCALE = 100.0000' / in.	CHECKED - _____	REVISED - _____
PLOT DATE = 12/28/2021	DATE - _____	REVISED - _____

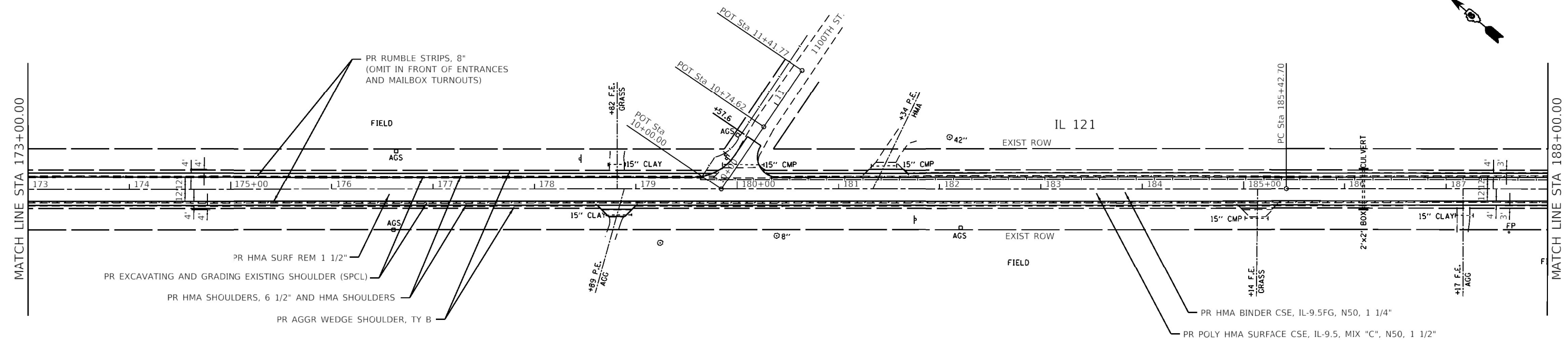
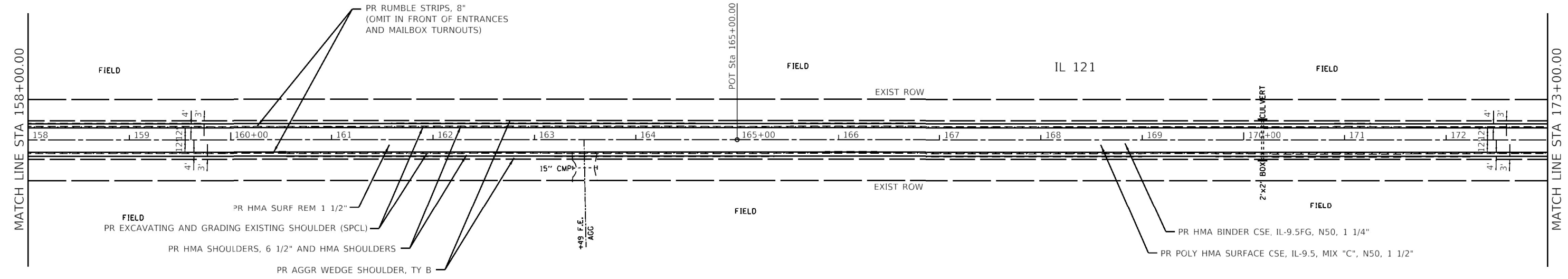
**STATE OF ILLINOIS
DEPARTMENT OF TRANSPORTATION**

PLAN SHEETS

SCALE: 1" = 50' SHEET 1 OF 11 SHEETS STA. 129+24.42 TO STA. 158+00.00

F.A.P. RTE.	SECTION	COUNTY	TOTAL SHEETS	SHEET NO.
320	(117)RS-10, (134)RS-9	LOGAN	28	11
CONTRACT NO. 72M70				
		ILLINOIS	FED. AID PROJECT	

MODEL: Default
 FILE: Model - Pavulidat.dwg
 PROJECT: D:\Projects\DOT - Office\Director - 6\Projects\DOT\CAD\Drawings\CAD\Sheet\DOT\72M70.dwg
 PLOT DATE: 12/28/2021



USER NAME = milderbt	DESIGNED - _____	REVISED - _____
DRAWN - _____	REVISED - _____	
PLOT SCALE = 100.0000' / in.	CHECKED - _____	REVISED - _____
PLOT DATE = 12/28/2021	DATE - _____	REVISED - _____

STATE OF ILLINOIS
DEPARTMENT OF TRANSPORTATION

PLAN SHEETS			
SCALE: 1" = 50'	SHEET 2	OF 11 SHEETS	STA. 158+00.00 TO STA. 188+00.00

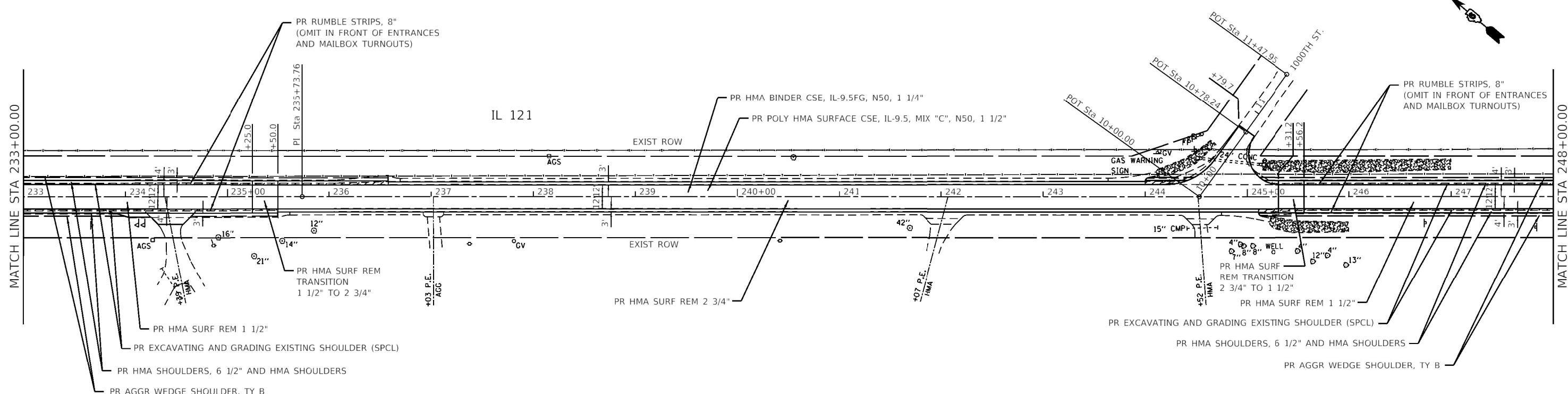
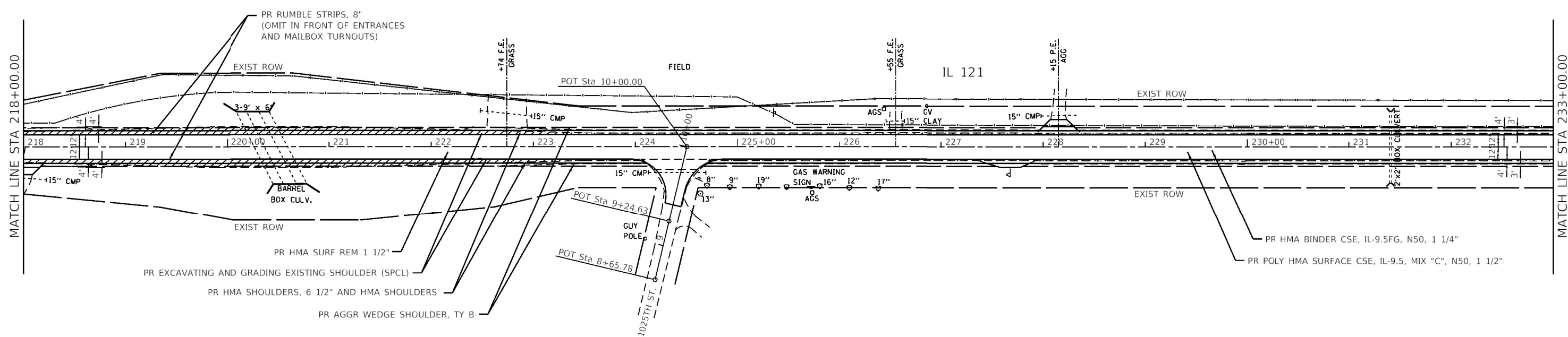
F.A.P. RTE. 320	SECTION (117)RS-10, (134)RS-9	COUNTY LOGAN	TOTAL SHEETS 28	SHEET NO. 12
CONTRACT NO. 72M70				
ILLINOIS FED. AID PROJECT				

MATCH LINE STA 218+00.00

MATCH LINE STA 233+00.00

MATCH LINE STA 233+00.00

MATCH LINE STA 248+00.00



MODEL: D:\default
 FILE: M:\11111111\11111111\11111111\11111111\11111111\11111111\11111111\11111111\11111111\11111111.dgn

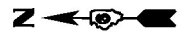
USER NAME	= minderbt	DESIGNED -	_____
DRAWN -	_____	REVISED -	_____
PLOT SCALE =	= 100.0000' / in.	CHECKED -	_____
PLOT DATE =	= 12/28/2021	DATE -	_____

STATE OF ILLINOIS
DEPARTMENT OF TRANSPORTATION

PLAN SHEETS

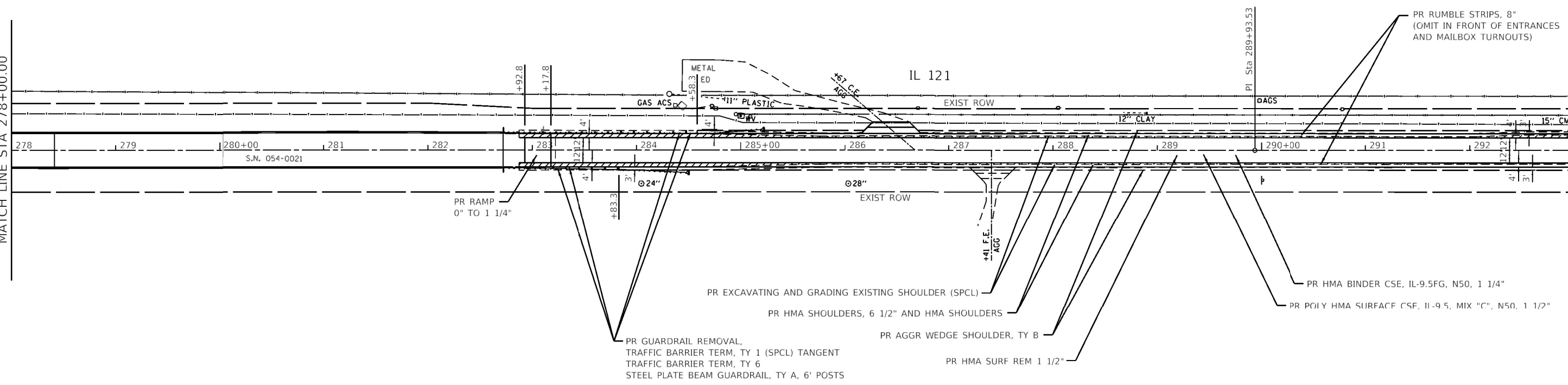
SCALE: 1" = 50' SHEET 4 OF 11 SHEETS STA. 218+00.00 TO STA. 248+00.00

F.A.P. RTE.	SECTION	COUNTY	TOTAL SHEETS	SHEET NO.
320	(117)RS-10, (134)RS-9	LOGAN	28	14
CONTRACT NO. 72M70				
		ILLINOIS	FED. AID PROJECT	



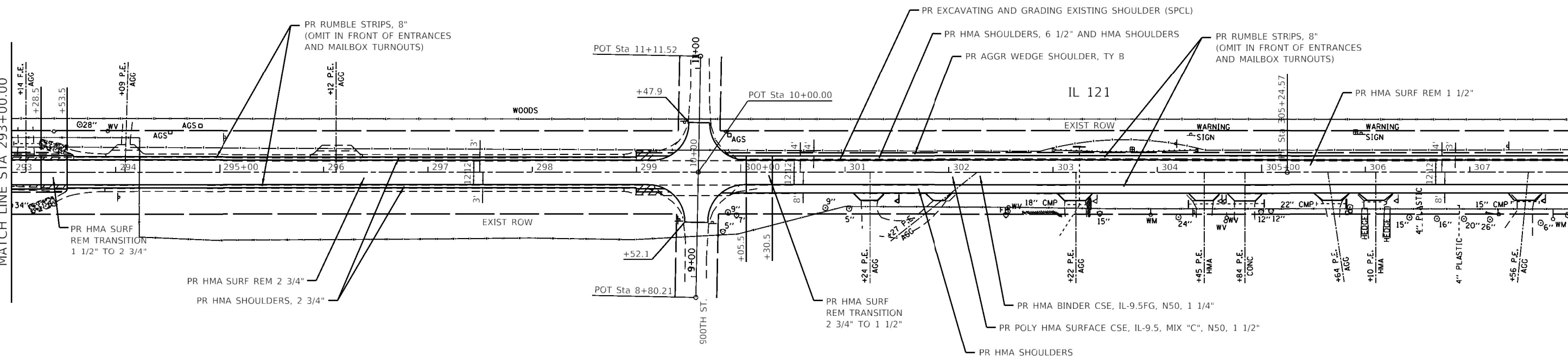
MATCH LINE STA 278+00.00

MATCH LINE STA 293+00.00



MATCH LINE STA 293+00.00

MATCH LINE STA 308+00.00



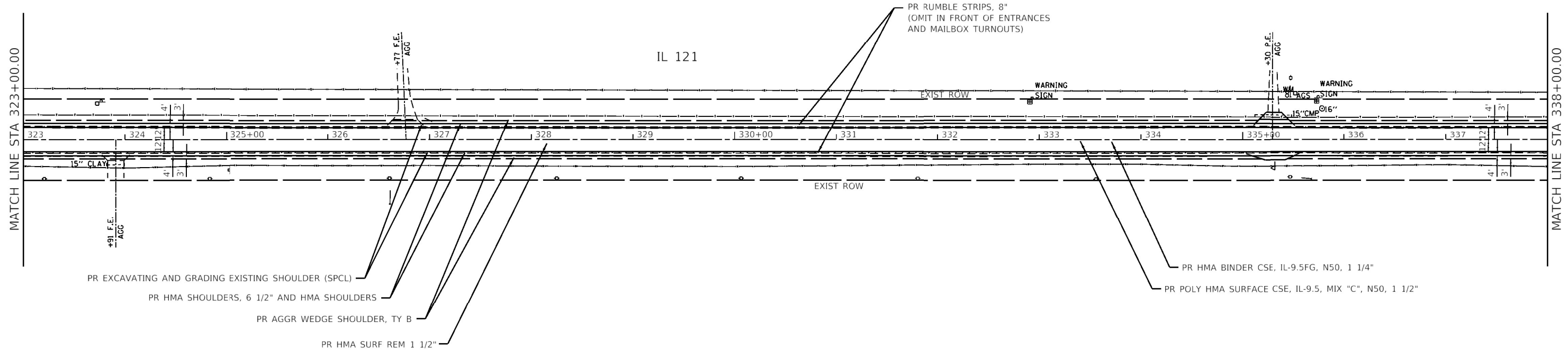
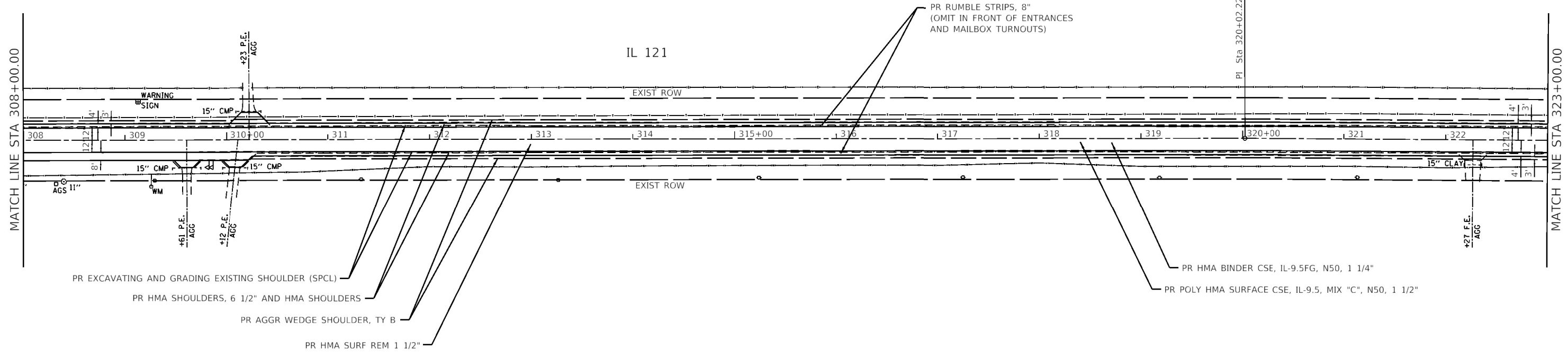
Model: Default
File: 72M70_Plan12.dwg
Project: D:\Projects\72M70\72M70\CAD\Drawings\72M70_Plan12.dwg

USER NAME = mindert	DESIGNED - _____	REVISED - _____
DRAWN - _____	REVISED - _____	REVISED - _____
PLOT SCALE = 100.0000' / in.	CHECKED - _____	REVISED - _____
PLOT DATE = 12/28/2021	DATE - _____	REVISED - _____

**STATE OF ILLINOIS
DEPARTMENT OF TRANSPORTATION**

PLAN SHEETS			
SCALE: 1" = 50'	SHEET 6	OF 11 SHEETS	STA. 278+00.00 TO STA. 308+00.00

F.A.P. RTE.	SECTION	COUNTY	TOTAL SHEETS	SHEET NO.
320	(117)RS-10, (134)RS-9	LOGAN	28	16
CONTRACT NO. 72M70				
ILLINOIS FED. AID PROJECT				



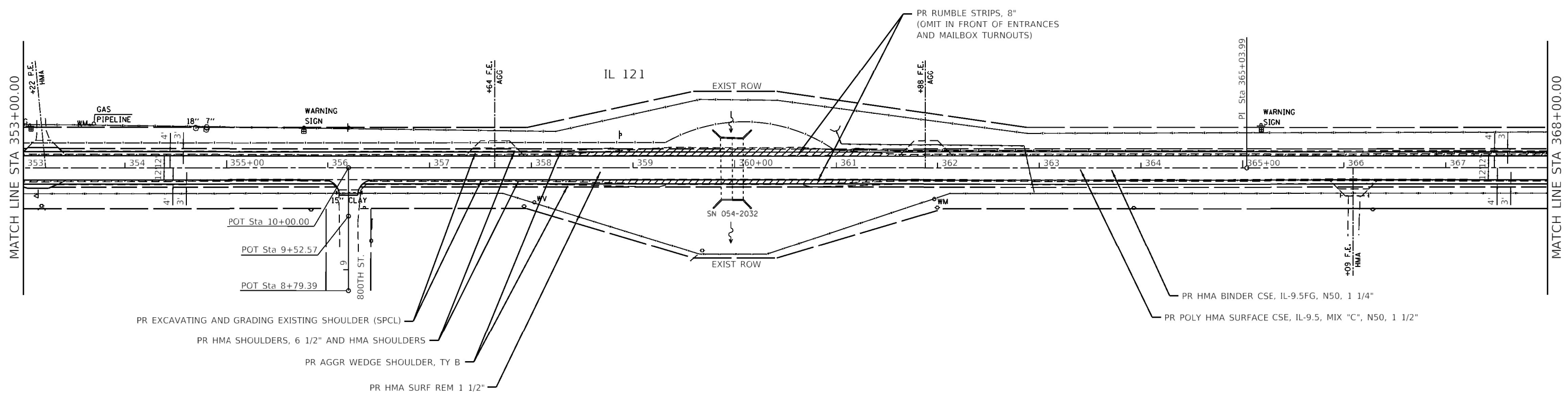
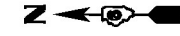
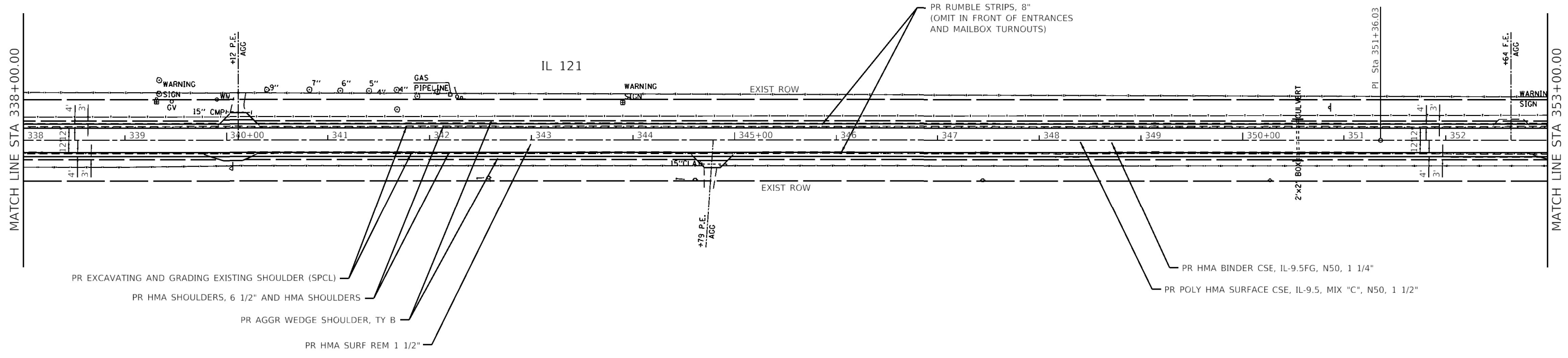
MODEL - Default
 FILE - Model - pavulldot.dwg
 PROJECT - 06727M70-CADD-Data-CAD- sheets-06727M70-11r-Plan12.dwg

USER NAME = mindert	DESIGNED - _____	REVISED - _____
DRAWN - _____	REVISIONS - _____	REVISIONS - _____
PLOT SCALE = 100.0000' / in.	CHECKED - _____	REVISIONS - _____
PLOT DATE = 12/28/2021	DATE - _____	REVISIONS - _____

**STATE OF ILLINOIS
DEPARTMENT OF TRANSPORTATION**

PLAN SHEETS			
SCALE: 1" = 50'	SHEET 7	OF 11 SHEETS	STA. 308+00.00 TO STA. 338+00.00

F.A.P. RTE.	SECTION	COUNTY	TOTAL SHEETS	SHEET NO.
320	(117)RS-10, (134)RS-9	LOGAN	28	17
CONTRACT NO. 72M70				
ILLINOIS FED. AID PROJECT				



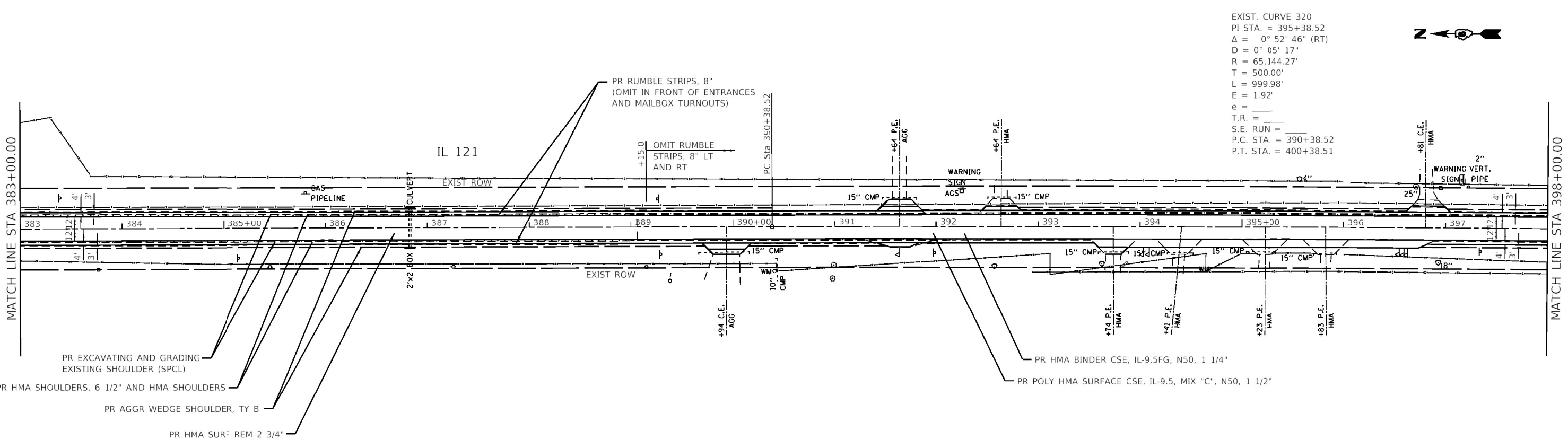
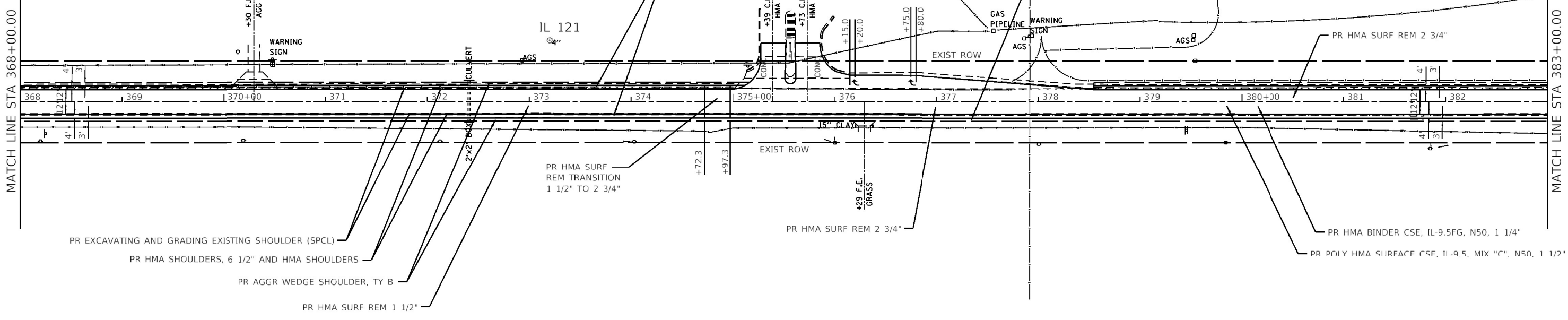
MODEL: Default
 FILE: \\miller-paw-bentley.com\PWD\DOT\Documents\DOT Office\Director_6\Projects\06727070\CADD\as-bid\7270-720-Plan12.dgn

USER NAME = mindert	DESIGNED - _____	REVISED - _____
DRAWN - _____	REVISED - _____	
PLOT SCALE = 100.0000' / in.	CHECKED - _____	REVISED - _____
PLOT DATE = 12/28/2021	DATE - _____	REVISED - _____

**STATE OF ILLINOIS
DEPARTMENT OF TRANSPORTATION**

PLAN SHEETS			
SCALE: 1" = 50'	SHEET 8	OF 11 SHEETS	STA. 338+00.00 TO STA. 368+00.00

F.A.P. RTE. 320	SECTION (117)RS-10, (134)RS-9	COUNTY LOGAN	TOTAL SHEETS 28	SHEET NO. 18
CONTRACT NO. 72M70				
ILLINOIS FED. AID PROJECT				



EXIST. CURVE 320
 PI STA. = 395+38.52
 $\Delta = 0^\circ 52' 46''$ (RT)
 $D = 0^\circ 05' 17''$
 $R = 65,144.27'$
 $T = 500.00'$
 $L = 999.98'$
 $E = 1.92'$
 $e = \text{---}$
 $T.R. = \text{---}$
 $S.E. RUN = \text{---}$
 $P.C. STA. = 390+38.52$
 $P.T. STA. = 400+38.51$

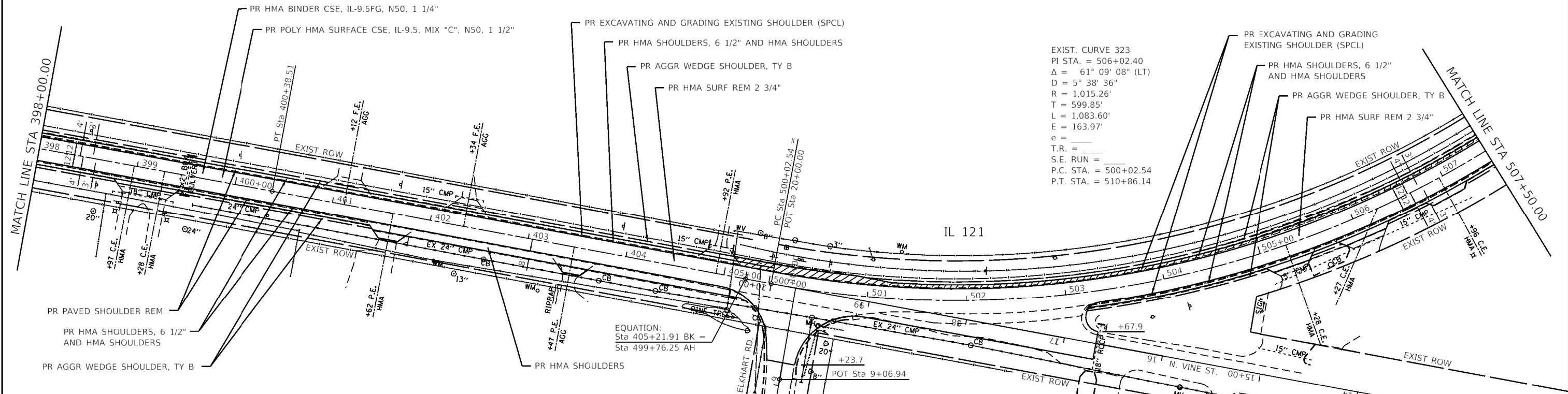
USER NAME = mindert	DESIGNED - _____	REVISED - _____
DRAWN - _____	REVISED - _____	REVISED - _____
PLOT SCALE = 100.0000' / in.	CHECKED - _____	REVISED - _____
PLOT DATE = 12/28/2021	DATE - _____	REVISED - _____

**STATE OF ILLINOIS
DEPARTMENT OF TRANSPORTATION**

PLAN SHEETS			
SCALE: 1" = 50'	SHEET 9	OF 11 SHEETS	STA. 368+00.00 TO STA. 398+00.00

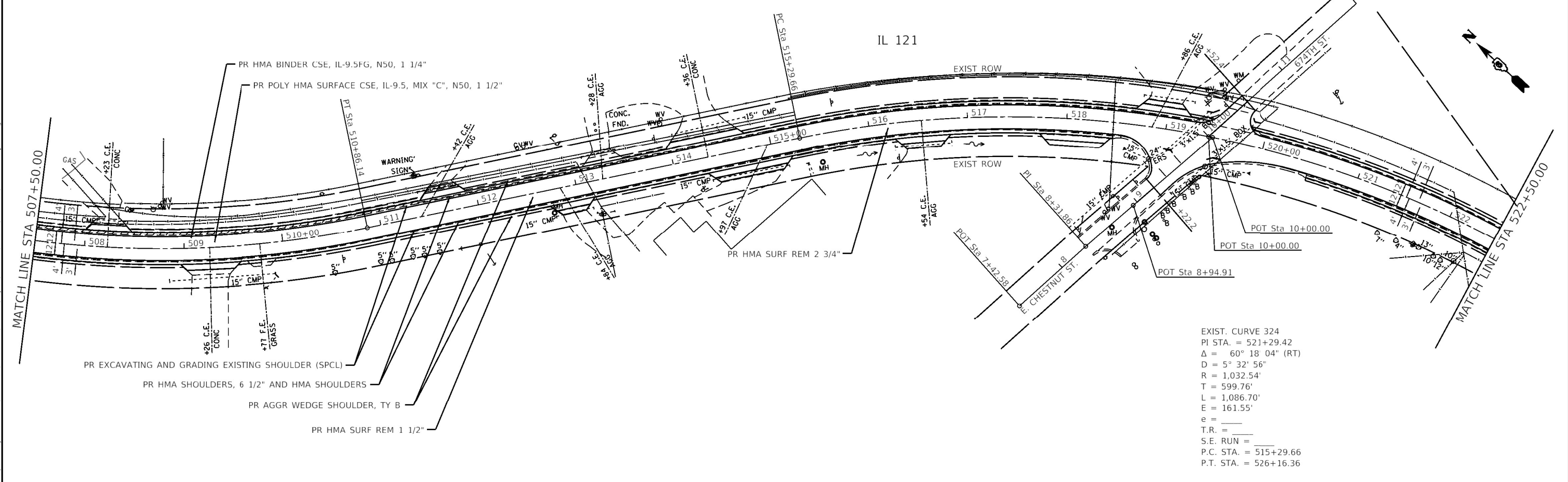
F.A.P. RTE.	SECTION	COUNTY	TOTAL SHEETS	SHEET NO.
320	(117)RS-10, (134)RS-9	LOGAN	28	19
CONTRACT NO. 72M70				
ILLINOIS FED. AID PROJECT				

MODEL Default
 FILE Name: pavbuild\pw_bentley.com\PROJECTS\DOT\Office\DOT\CD\DATA\CAD\sheet072M70.dwg, plot12.dwg



EXIST. CURVE 323
 PI STA. = 506+02.40
 $\Delta = 61^\circ 09' 08''$ (LT)
 $D = 5^\circ 38' 36''$
 $R = 1,015.26'$
 $T = 599.85'$
 $L = 1,083.60'$
 $E = 163.97'$
 $e =$
 $T.R. =$
 $S.E. RUN =$
 $P.C. STA. = 500+02.54$
 $P.T. STA. = 510+86.14$

EQUATION:
 Sta 405+21.91 BK =
 Sta 499+76.25 AH



EXIST. CURVE 324
 PI STA. = 521+29.42
 $\Delta = 60^\circ 18' 04''$ (RT)
 $D = 5^\circ 32' 56''$
 $R = 1,032.54'$
 $T = 599.76'$
 $L = 1,086.70'$
 $E = 161.55'$
 $e =$
 $T.R. =$
 $S.E. RUN =$
 $P.C. STA. = 515+29.66$
 $P.T. STA. = 526+16.36$

MODEL: Default
 FILE: Model - 1000000.ctb
 PROJECT: D:\Projects\117\117R5-10\117R5-10\117R5-10.dwg
 PLOT: 12/28/2021 10:00:00 AM
 PLOT SCALE: 100.0000
 PLOT DATE: 12/28/2021

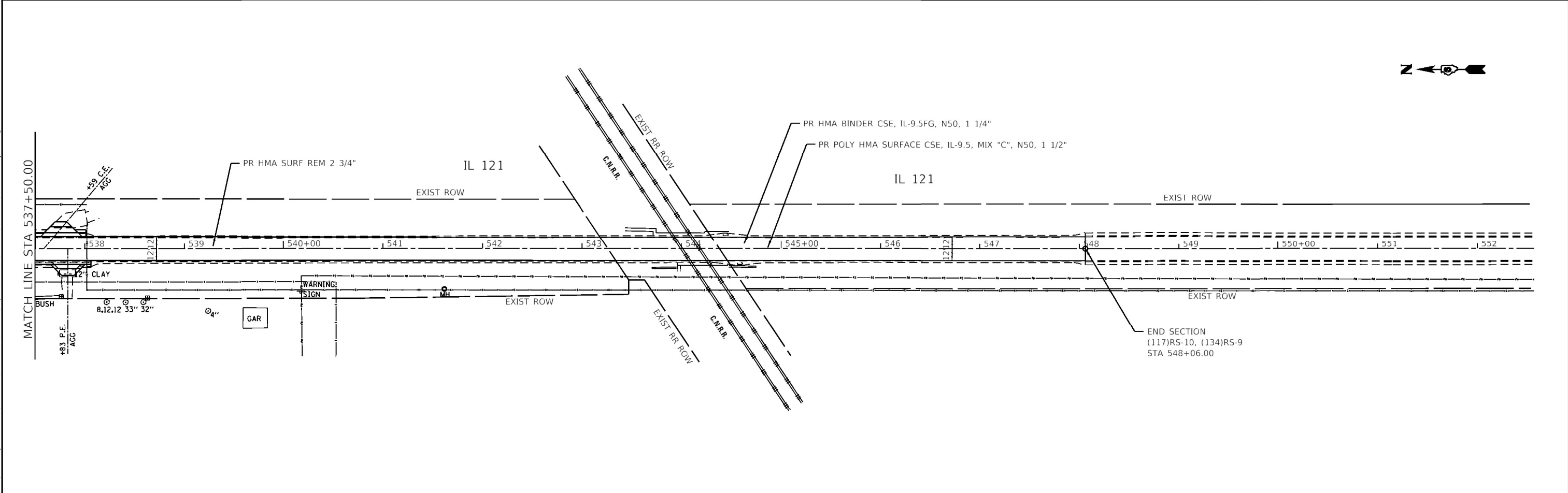
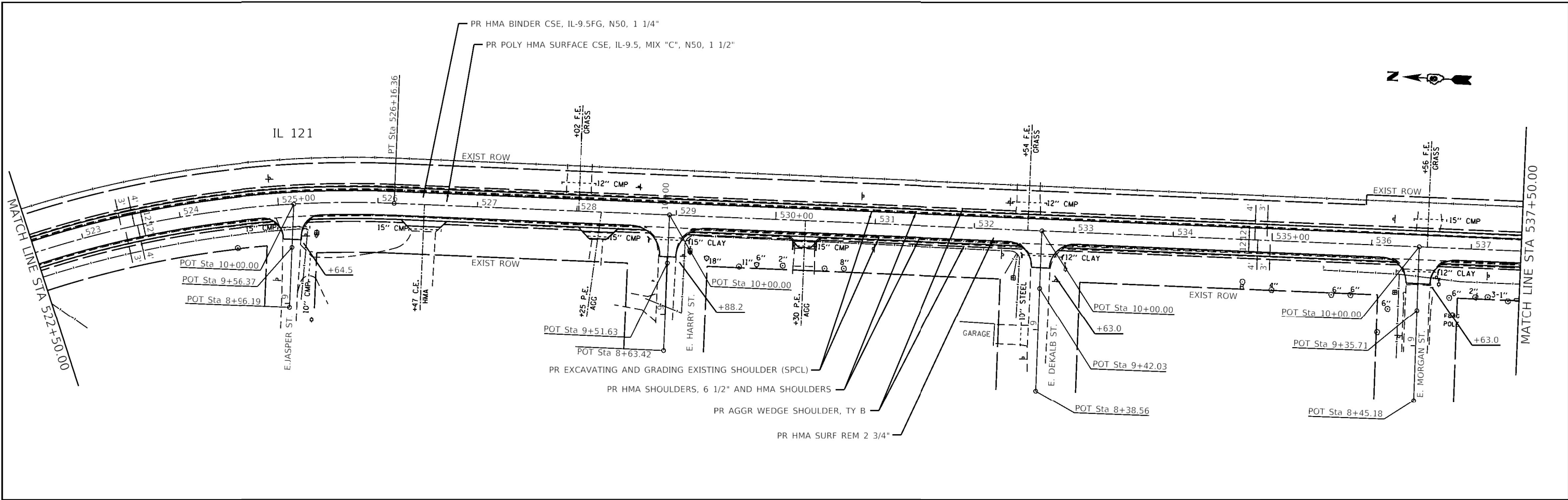
USER NAME = mindert	DESIGNED -	REVISED -
	DRAWN -	REVISED -
PLOT SCALE = 100.0000" / in.	CHECKED -	REVISED -
PLOT DATE = 12/28/2021	DATE -	REVISED -

**STATE OF ILLINOIS
 DEPARTMENT OF TRANSPORTATION**

SCALE: 1" = 50'		SHEET 10 OF 11 SHEETS		STA. 398+00.00 TO STA. 522+50.00	
-----------------	--	-----------------------	--	----------------------------------	--

PLAN SHEETS

F.A.P. RTE.	SECTION	COUNTY	TOTAL SHEETS	SHEET NO.
320	(117)R5-10, (134)R5-9	LOGAN	28	20
CONTRACT NO. 72M70				
ILLINOIS FED. AID PROJECT				



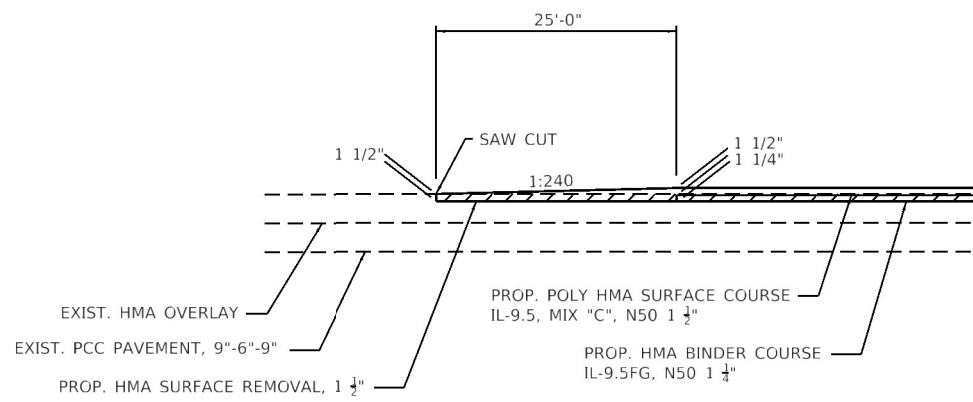
MODEL: Default
 FILE: Model - pavbuild.ctb
 PROJECT: D:\Projects\106727270\CADD\Drawings\CADD\Sheet\106727270.dwg
 PLOT DATE = 12/28/2021

USER NAME = mindert	DESIGNED - _____	REVISED - _____
DRAWN - _____	REVISED - _____	REVISED - _____
PLOT SCALE = 100.0000' / in.	CHECKED - _____	REVISED - _____
PLOT DATE = 12/28/2021	DATE - _____	REVISED - _____

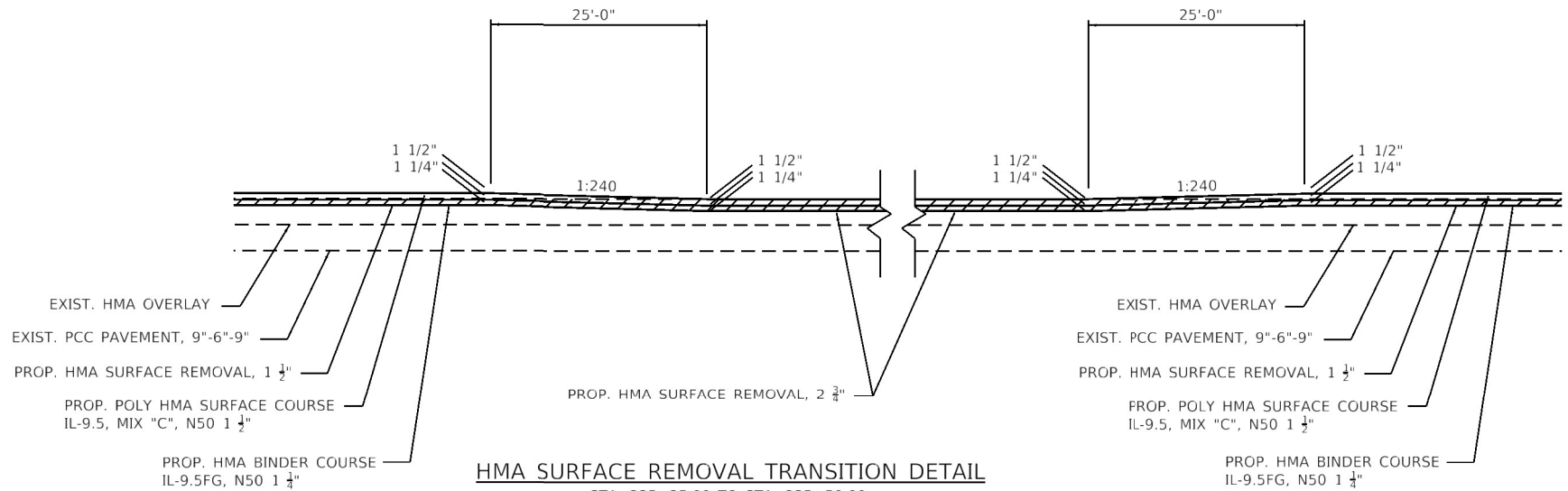
**STATE OF ILLINOIS
 DEPARTMENT OF TRANSPORTATION**

PLAN SHEETS	
SCALE: 1" = 50'	SHEET 11 OF 11 SHEETS
STA. 522+50.00	TO STA. 548+06.00

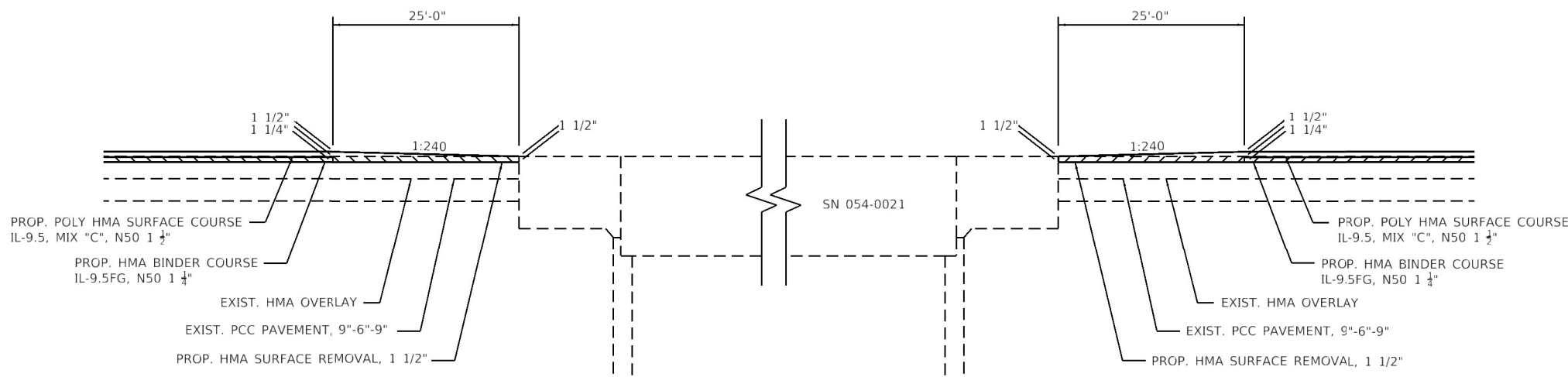
F.A.P. RTE. 320	SECTION (117)RS-10, (134)RS-9	COUNTY LOGAN	TOTAL SHEETS 28	SHEET NO. 21
CONTRACT NO. 72M70				
ILLINOIS FED. AID PROJECT				



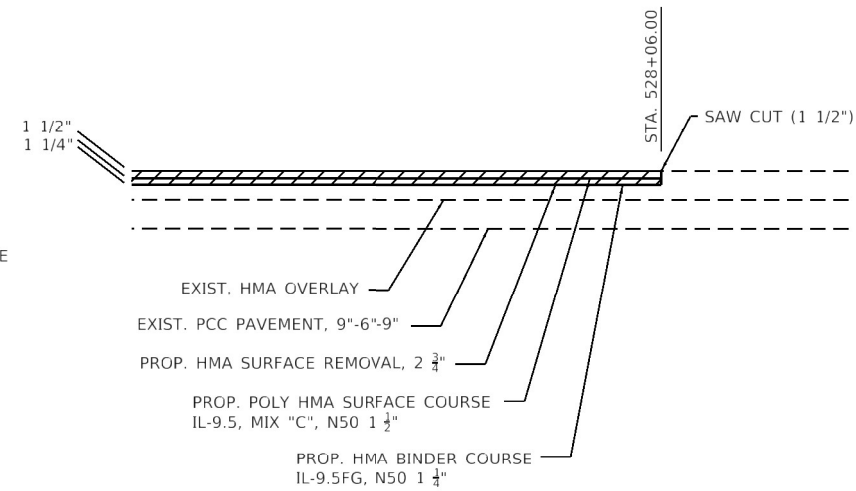
HMA RAMP DETAIL
STA. 128+99.42 TO STA. 129+24.42



HMA SURFACE REMOVAL TRANSITION DETAIL
STA. 235+25.00 TO STA. 235+50.00
STA. 245+31.20 TO STA. 245+56.20
STA. 293+28.50 TO STA. 293+53.50
STA. 300+05.50 TO STA. 300+30.50
STA. 374+72.30 TO STA. 374+97.30



HMA JOINT DETAIL
STA. 276+56.00 TO STA. 276+81.00
STA. 282+92.80 TO STA. 283+17.80



HMA JOINT DETAIL
STA. 548+06.00

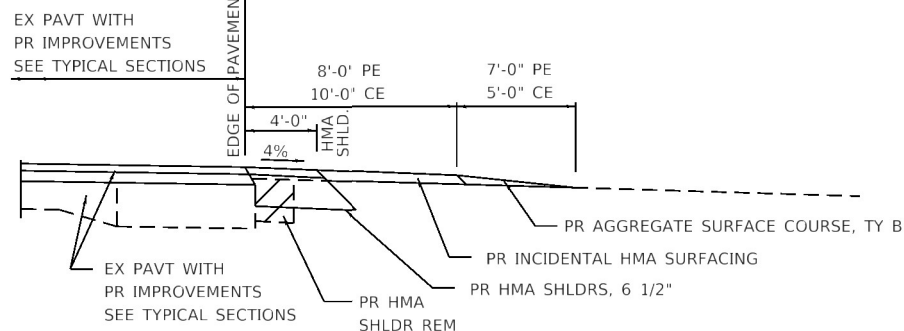
MODEL: Default
 FILE: Model - 1000000.dwg
 PROJECT: D:\Projects\72M70\CADD\Drawings\DOT_Civil\Sheet\DOT_Civil\Sheet0672M70.dwg
 PLOT DATE = 12/28/2021

USER NAME = mindert	DESIGNED -	REVISED -
	DRAWN -	REVISED -
PLOT SCALE = 40.0000' / 1"	CHECKED -	REVISED -
PLOT DATE = 12/28/2021	DATE -	REVISED -

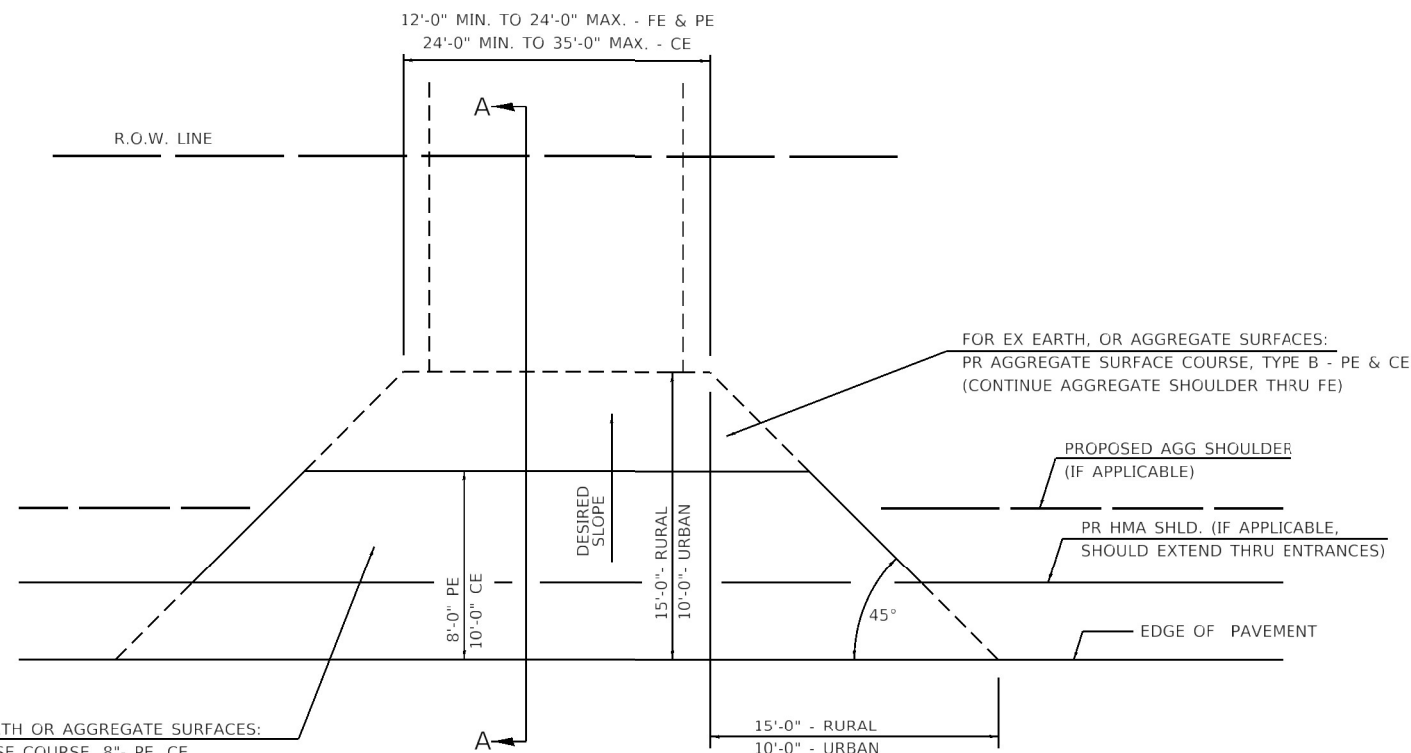
**STATE OF ILLINOIS
DEPARTMENT OF TRANSPORTATION**

BUTT JOINT AND RAMP DETAILS			
SCALE: N/A	SHEET 1 OF 7 SHEETS	STA. N/A	TO STA. N/A

F.A.P. RTE.	SECTION	COUNTY	TOTAL SHEETS	SHEET NO.
302	(117)RS-10, (134)RS-9	LOGAN	28	22
CONTRACT NO. 72M70				
ILLINOIS FED. AID PROJECT				



SECTION A-A FOR EX EARTH/AGGREGATE PE & CE



FOR EX EARTH OR AGGREGATE SURFACES:
PR HMA BASE COURSE, 8"- PE, CE

FOR EX HMA CONCRETE SURFACES:
PR HMA SURFACE REMOVAL-BUTT JOINT

FOR EX PCC SURFACES:
PR PCC SURFACE REMOVAL-BUTT JOINT

GENERAL NOTES:

THE RESIDENT ENGINEER WILL DETERMINE THE EXACT TYPE OF IMPROVEMENT TO BE COMPLETED FOR ALL ENTRANCES, SIDEROADS AND MAILBOX TURNOUTS ON THIS PROJECT.

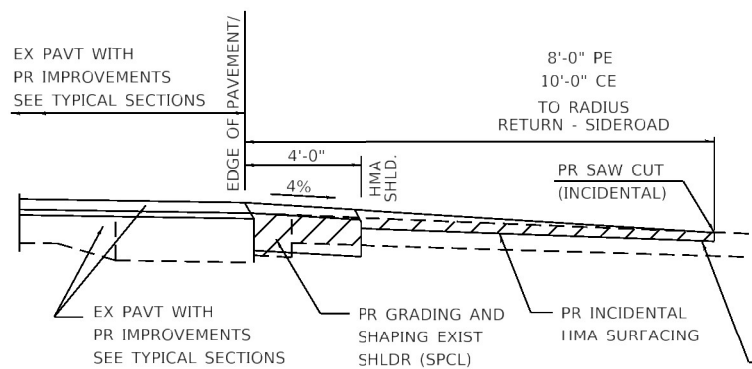
THE PLAN DETAILS AND SCHEDULES SHOULD BE USED AS A GUIDE FOR THE ENGINEER TO IMPLEMENT THE FINAL DESIGN. THE ENGINEER MAY DECIDE TO SALVAGE PORTIONS OF THE EXISTING ENTRANCE PAVEMENT STRUCTURE; THEREFORE, REDUCING PAY ITEM QUANTITIES. NO ADDITIONAL PAYMENT WILL BE ALLOWED FOR THIS REDUCTION IN QUANTITIES.

ANY WORK THE ENGINEER REQUIRES WHICH IS NOT COVERED BY A PAY ITEM CONTAINED IN THE PLANS WILL BE PAID FOR IN ACCORDANCE WITH ARTICLE 109.04 OF THE STANDARD SPECIFICATIONS.

HMA REQUIRED TO CONSTRUCT THE ENTRANCES SHALL BE IN ACCORDANCE WITH THE APPLICABLE PORTIONS OF SECTION 406 AND 408 OF THE STANDARD SPECIFICATIONS AND AS DIRECTED BY THE ENGINEER.

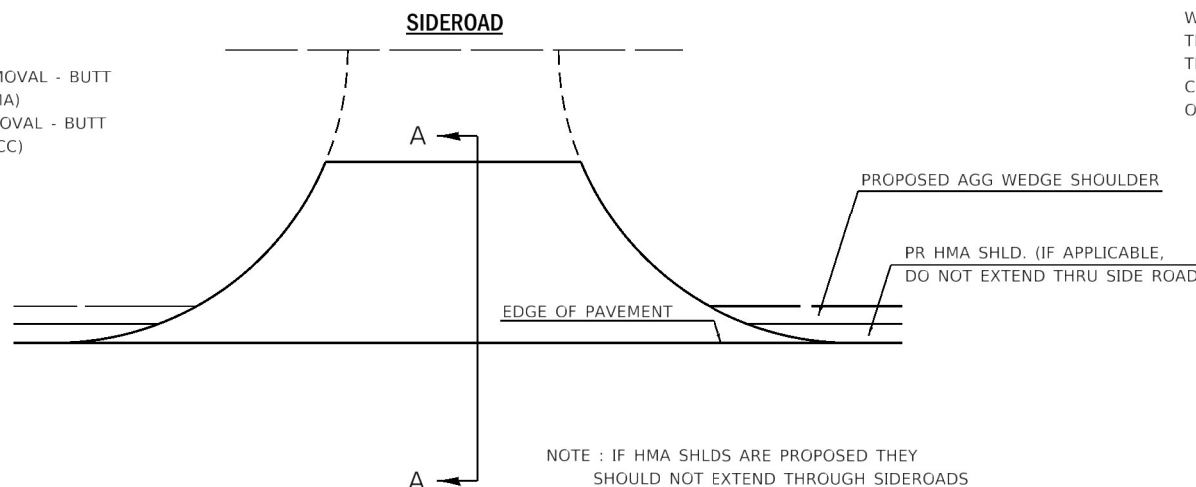
WHEN THE HMA PROPOSED FOR THE IMPROVEMENT IS THICKER THAN 3 INCHES AND REQUIRES PLACEMENT IN MORE THAN ONE LIFT. THE BOTTOM LIFT(S) SHALL MEET THE REQUIREMENTS OF HMA BASE COURSE IN SECTION 406 OF THE STANDARD SPECIFICATIONS AND THE TOP LIFT OF 1 1/2 INCHES SHALL MEET THE REQUIREMENTS OF HMA SURFACE COURSE.

ALL DIMENSIONS ARE IN INCHES UNLESS OTHERWISE SHOWN.



SECTION A-A FOR EX HMA/PC CONCRETE PE, CE & SIDE ROAD

PR HMA SURFACE REMOVAL - BUTT JOINT (IF EXISTING HMA)
PR PCC SURFACE REMOVAL - BUTT JOINT (IF EXISTING PCC)



NOTE : IF HMA SHLDS ARE PROPOSED THEY SHOULD NOT EXTEND THROUGH SIDEROADS

MODEL - Default
 FILE - Model - pwwildcat.pwwildcat.dwg
 PROJECT - 107274701-CADD-Data-CAD-headers-107274701.dwg
 PROJECT - 107274701-CADD-Data-CAD-headers-107274701.dwg

USER NAME = mindert	DESIGNED -	REVISED - 2/19/03 JCN
	DRAWN - CADD	REVISED - 4/01/04 JCN
PLOT SCALE = 40.0000' / 1"	CHECKED - JCN	REVISED -
PLOT DATE = 12/28/2021	DATE - FEBRUARY 23, 1999	REVISED -

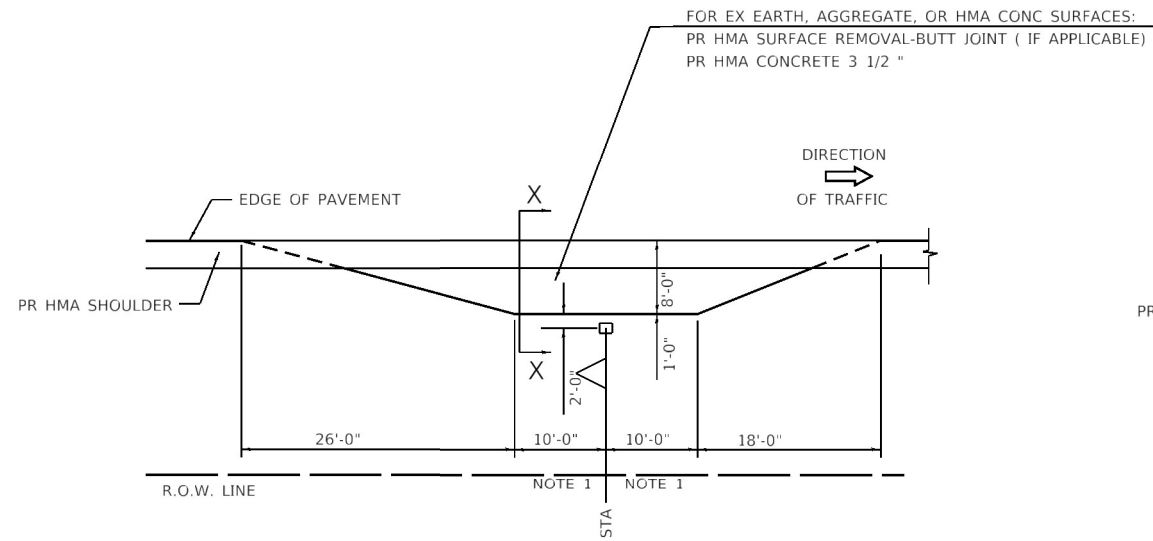
**STATE OF ILLINOIS
DEPARTMENT OF TRANSPORTATION**

**DETAILS FOR RURAL/URBAN ENT., MAILBOX
TURNOUT & SIDEROADS W/O CONC. GUTTER**

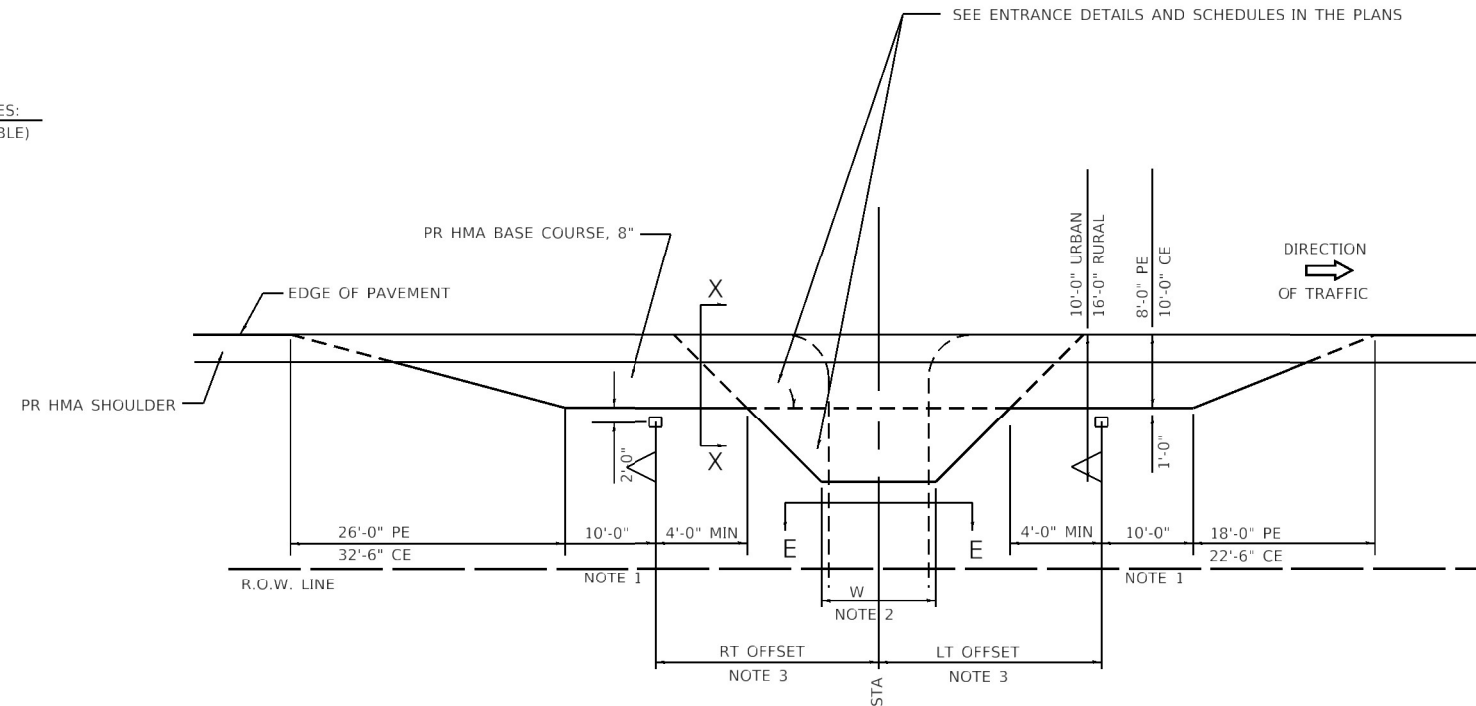
SCALE: N/A SHEET 2 OF 7 SHEETS STA. N/A TO STA. N/A

F.A.P. RTE.	SECTION	COUNTY	TOTAL SHEETS	SHEET NO.
302	(117)RS-10, (134)RS-9	LOGAN	28	23
CONTRACT NO. 72M70				
ILLINOIS FED. AID PROJECT				

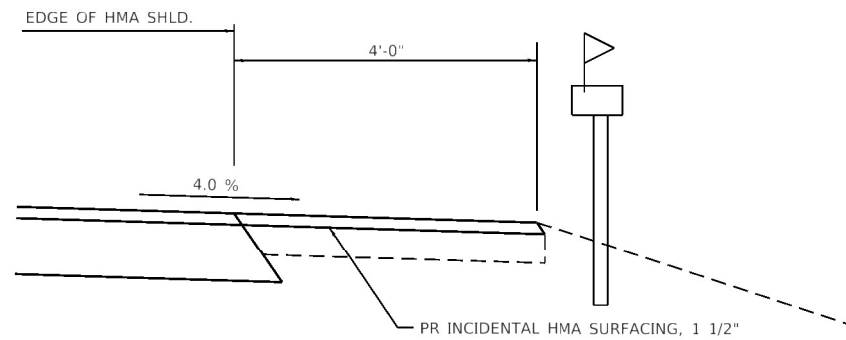
DETAILS OF MAILBOX TURNOUTS



PLAN - MAILBOX TURNOUTS



PLAN - COMBINED MAILBOX TURNOUT WITH TRAILING OR LEADING ENTRANCE



SECTION X-X THRU MAILBOX TURNOUT

- NOTE 1 IF MORE THAN ONE MAILBOX IS PRESENT, DIMENSION FROM CENTER OF END MAILBOX.
- NOTE 2 FOR ENTRANCE LAYOUT DIMENSIONS AND SECTIONS A-A & E-E REFER TO THE SCHEDULES IN THE PLANS.
- NOTE 3 BOTH LT OR RT OFFSETS FOR MAILBOX SHOWN USE OFFSET DIMENSION PER SCHEDULE AND REFER TO LAYOUT SHOWN ON THE PLAN.

MODEL: Default
 FILE: Mailbox - pwwildcat.pwwildcat.dwg
 PROJECT: D:\Projects\DOT\Projects\DOT - Offices\District 6\Projects\DOT\CADD\Data\CAD\Sheet\DOT\72M70.dwg
 PLOT DATE = 12/28/2021

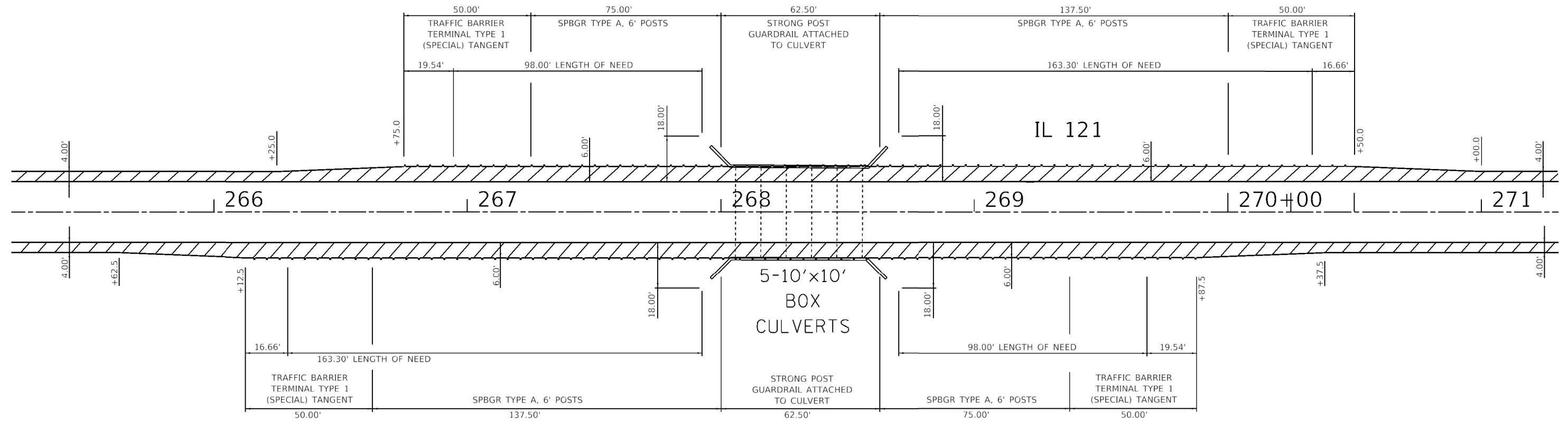
USER NAME = mindert	DESIGNED -	REVISED - 2/19/03 JCN
	DRAWN - CADD	REVISED - 4/01/04 JCN
PLOT SCALE = 40.0000' / 1"	CHECKED - JCN	REVISED -
PLOT DATE = 12/28/2021	DATE - FEBRUARY 23, 1999	REVISED -

**STATE OF ILLINOIS
DEPARTMENT OF TRANSPORTATION**

**DETAILS FOR RURAL/URBAN ENT., MAILBOX
TURNOUT & SIDEROADS W/O CONC. GUTTER**

SCALE: N/A SHEET 3 OF 7 SHEETS STA. N/A TO STA. N/A

F.A.P. RTE.	SECTION	COUNTY	TOTAL SHEETS	SHEET NO.
302	(117)RS-10, (134)RS-9	LOGAN	28	24
CONTRACT NO. 72M70				
ILLINOIS FED. AID PROJECT				



MODEL: Default
 FILE: Model - pw_bentley.com.PWIDOTDocuments\DOT_Offices\District_6\Projects\0672M70\CADD\Drawings\0672M70_dht_cerhills.dgn

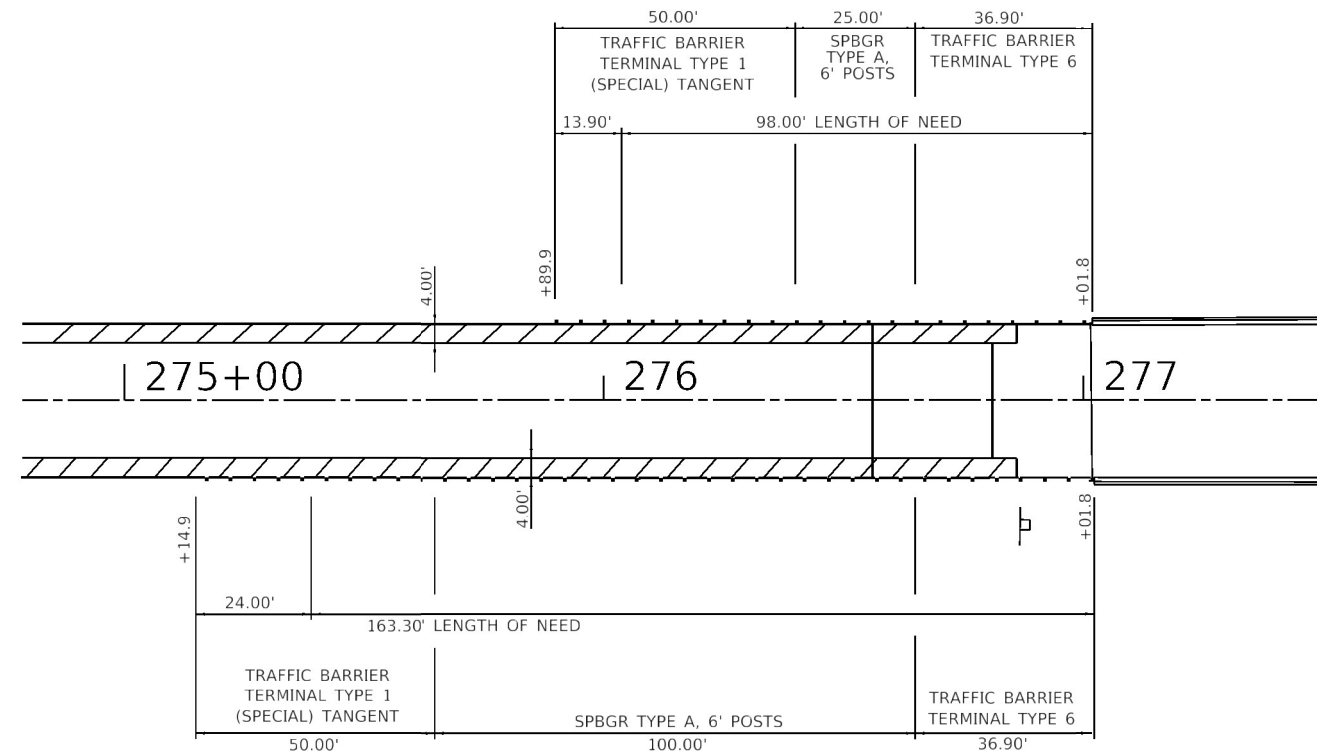
USER NAME = mindrbt	DESIGNED -	REVISED -
	DRAWN -	REVISED -
PLOT SCALE = 40.0000' / 1"	CHECKED -	REVISED -
PLOT DATE = 12/28/2021	DATE -	REVISED -

STATE OF ILLINOIS
DEPARTMENT OF TRANSPORTATION

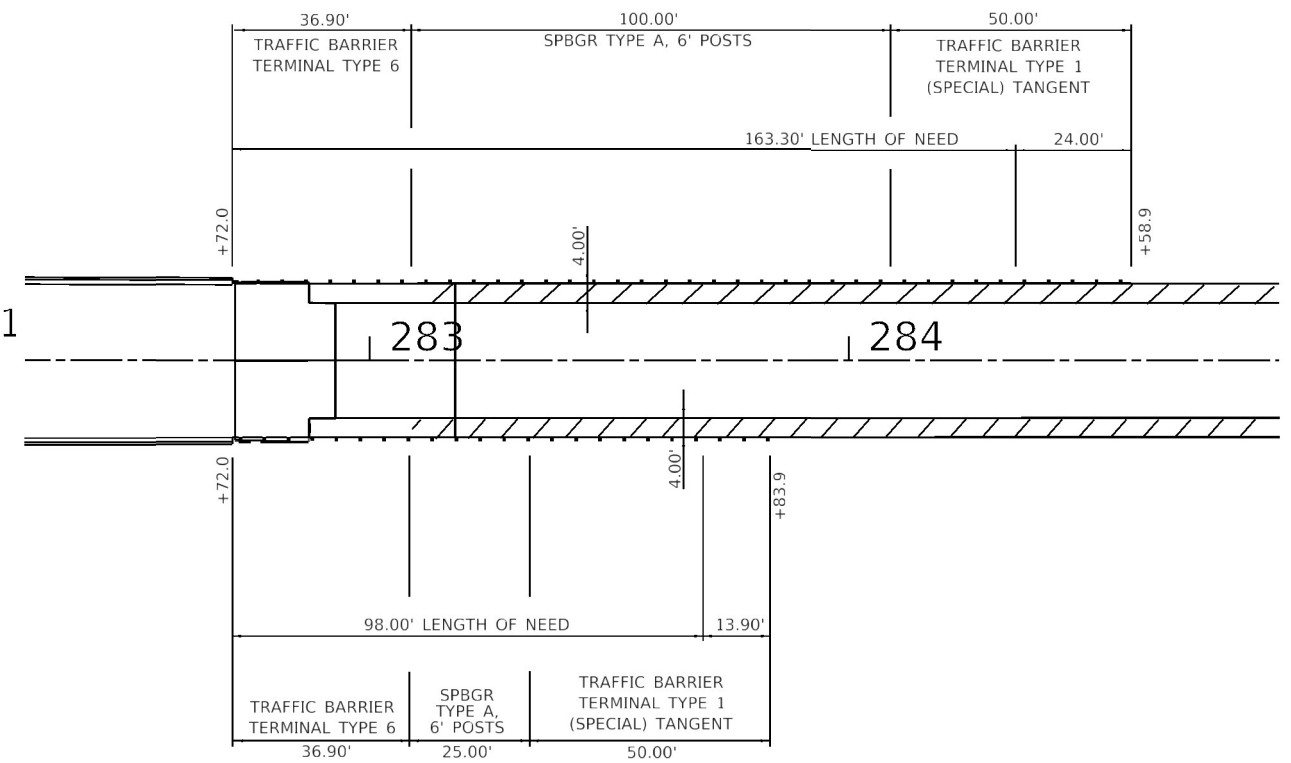
GUARDRAIL DETAILS

SCALE: N/A SHEET 4 OF 7 SHEETS STA. N/A TO STA. N/A

F.A.P. RTE.	SECTION	COUNTY	TOTAL SHEETS	SHEET NO.
302	(117)RS-10, (134)RS-9	LOGAN	28	25
				CONTRACT NO. 72M70
		ILLINOIS	FED. AID PROJECT	



IL 121
SN 054-0021



Model: Default
 File: Model - pwwildcat.pw.bentley.com.PWID01Documents\DOT_Civil\as\District_6\Projects\06727470\CADD\as\Sheet\06727470.dht.cer\as\ldg.p

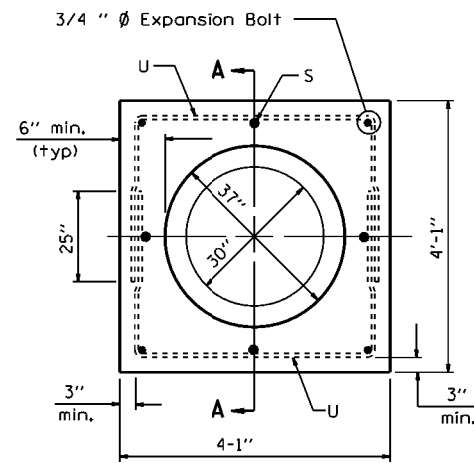
USER NAME = mindert	DESIGNED -	REVISED -
	DRAWN -	REVISED -
PLOT SCALE = 40.0000' / 1"	CHECKED -	REVISED -
PLOT DATE = 12/28/2021	DATE -	REVISED -

**STATE OF ILLINOIS
DEPARTMENT OF TRANSPORTATION**

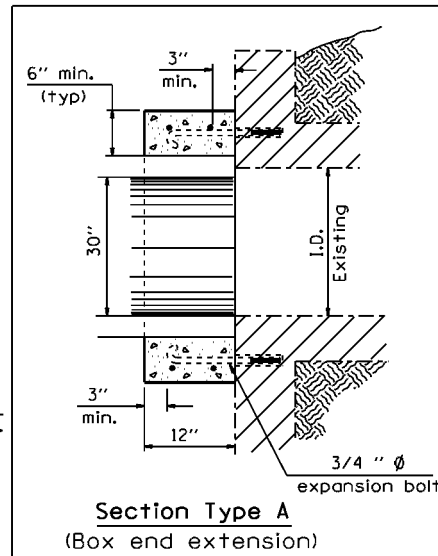
GUARDRAIL DETAILS

SCALE: N/A SHEET 5 OF 7 SHEETS STA. N/A TO STA. N/A

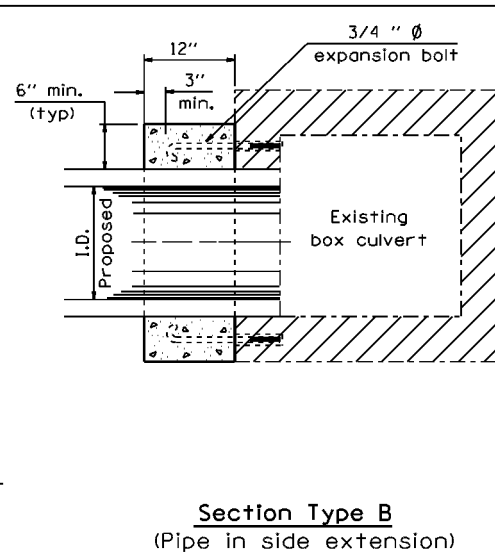
F.A.P. RTE.	SECTION	COUNTY	TOTAL SHEETS	SHEET NO.
302	(117)RS-10, (134)RS-9	LOGAN	28	26
CONTRACT NO. 72M70				
ILLINOIS FED. AID PROJECT				



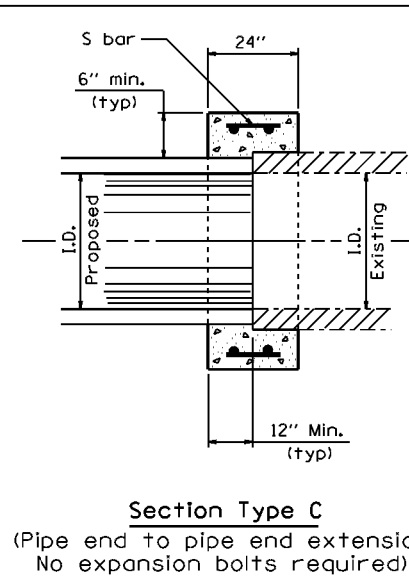
PIPE CULVERT EXTENSION COLLAR



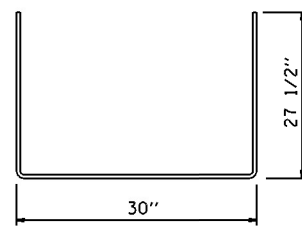
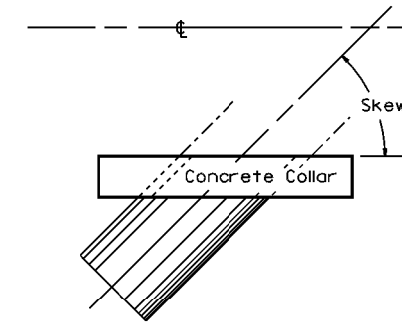
Section Type A
(Box end extension)



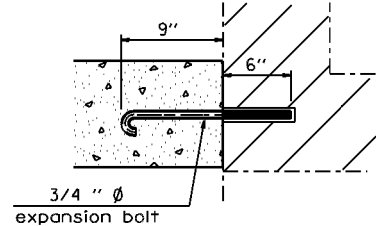
Section Type B
(Pipe in side extension)



Section Type C
(Pipe end to pipe end extension
No expansion bolts required)



#4 U - bar

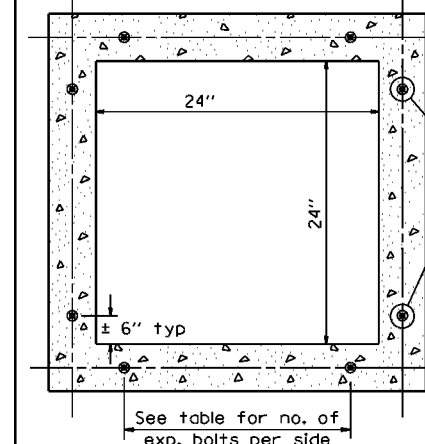


Expansion Bolt Detail

Notes:

- Expansion bolts shall consist of self drilling expansion shields and 3/4" Ø hooked bolts. Hooked bolts shall extend a minimum of 9" into new concrete. Minimum Certified Proof Load - 4,080 lbs.
- Use minimum of 1 (one) expansion bolt at each corner.

BOX CULVERT POURED IN PLACE EXTENSION



Section Thru Barrel

EXPANSION BOLTS REQUIRED FOR CULVERT EXTENSIONS

H or S	No. Expansion Bolts Req'd. Per Side			
	Extension ≤ 15ft		Extension > 15ft	
	No.	Spacing	No.	Spacing
24"	*	*	*	*
30"	2	18"	2	18"
36"	2	24"	2	24"
48"	3	18"	3	18"
60"	4	16"	3	24"
72"	5	15"	4	20"
84"	5	18"	4	24"
96"	6	17"	5	21"
108"	6	19"	5	24"
120"	7	18"	6	21"
132"	8	17"	6	24"
144"	8	19"	7	22"

Note: Number of expansion bolts in table based on non-skewed culverts.

* Use minimum 1 (one) expansion bolt in each corner.

Station	Section Type	Skew	Existing Culvert		Proposed Culvert		Collar		Reinforcement Bars							Expansion Bolts 3/4"	Class SI Concrete Collar				
			Size	I.D.	O.D.	Height	Width	S bar			U bar				lb						
									No.	Size	Length	No.	Size	A	B	Lap	Length		Each	yd ³	
LT STA 249+98.48	A	0°	2'x2'	30"	37"	4'-1"	4'-1"	4	#4	18"	4	#4	30"	27 1/2"	25"	7'-1"	23			0.6	
RT STA 249+98.48	A	0°	2'x2'	30"	37"	4'-1"	4'-1"	4	#4	18"	4	#4	30"	27 1/2"	25"	7'-1"	23			0.6	
Total																			46	16	1.2

MODEL: Default
 FILE: Model - psw_bentley.com_PSWD01Documents\DOT_Offices\Director_@Projects\06727270\CADD\Data\CAD\Sheet\06727270.dwg
 PLOT SCALE = 40.0000 "/>

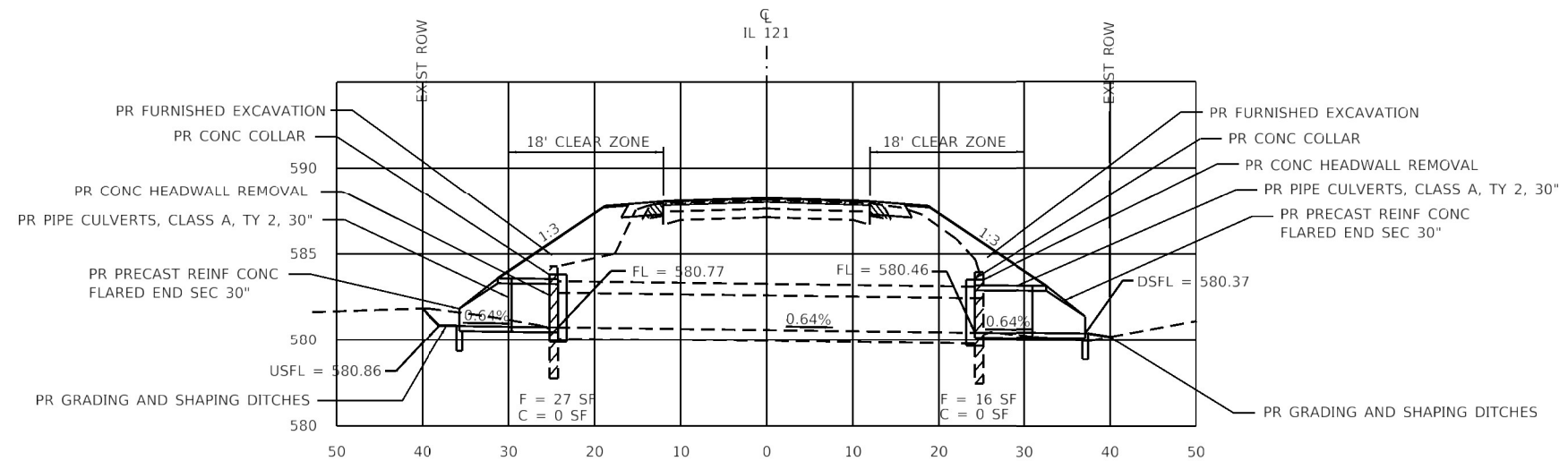
USER NAME = minderbt	DESIGNED -	REVISED -
	DRAWN -	REVISED -
PLOT SCALE = 40.0000 "/>		
DATE = 12/28/2021	DATE -	REVISED -

**STATE OF ILLINOIS
DEPARTMENT OF TRANSPORTATION**

CONCRETE COLLAR DETAILS

SCALE: N/A SHEET 6 OF 7 SHEETS STA. N/A TO STA. N/A

F.A.P. RTE.	SECTION	COUNTY	TOTAL SHEETS	SHEET NO.
302	(117)R5-10, (134)R5-9	LOGAN	28	27
CONTRACT NO. 72M70				
ILLINOIS FED. AID PROJECT				



STA 249 + 98.48

1" = 10' HORIZ
1" = 5' VERT

MODEL: Default
 FILE: Model - pwwildcat.pwwildcat.dwg
 PROJECT: D:\Projects\DOT\Documents\DOT - Offices\District 6\Projects\DOT\CAD\Drawings\DOT\72M70.dwg

USER NAME = mindert	DESIGNED -	REVISED -
	DRAWN -	REVISED -
PLOT SCALE = 40.0000" / 1'	CHECKED -	REVISED -
PLOT DATE = 12/28/2021	DATE -	REVISED -

STATE OF ILLINOIS
DEPARTMENT OF TRANSPORTATION

CULVERT PROFILE STA 249 + 98.48

SCALE: N/A SHEET 7 OF 7 SHEETS STA. N/A TO STA. N/A

F.A.P. RTE.	SECTION	COUNTY	TOTAL SHEETS	SHEET NO.
302	(117)RS-10, (134)RS-9	LOGAN	28	28
CONTRACT NO. 72M70			ILLINOIS FED. AID PROJECT	