

CODE NO.	ITEM	UNIT	TOTAL QUANTITY	CONSTRUCTION CODE						
				NHPP 90%FED/10%STATE	NHPP 90%FED/10%STATE	NHPP 90%FED/10%STATE	NHPP 90%FED/10%STATE	NHPP 90%FED/10%STATE	NHPP 90%FED/10%STATE	
				ROADWAY	BRIDGE	BRIDGE	BRIDGE	BRIDGE	BRIDGE	
				0005 RURAL	0013 038-0132	0013 038-0126	0013 038-0076	0013 038-0151	0013 038-0152	
40604164	POLYMERIZED HOT-MIX ASPHALT SURFACE COURSE, IL-9.5, MIX "D", N90	TON	1079	1079						
40605034	POLYMERIZED HOT-MIX ASPHALT SURFACE COURSE, STONE MATRIX ASPHALT, 12.5, MIX "E", N80	TON	20886	20886						
40733705	LONGITUDINAL JOINT SEALANT	FOOT	142061	142061						
40800050	INCIDENTAL HOT-MIX ASPHALT SURFACING	TON	36	36						
44000153	HOT-MIX ASPHALT SURFACE REMOVAL, 1"	SQ YD	47139	47139						
44000155	HOT-MIX ASPHALT SURFACE REMOVAL, 1 1/2"	SQ YD	434	434						
44000157	HOT-MIX ASPHALT SURFACE REMOVAL, 2"	SQ YD	46950	46950						
44000164	HOT-MIX ASPHALT SURFACE REMOVAL, 3 3/4"	SQ YD	8178	8178						
44000162	HOT-MIX ASPHALT SURFACE REMOVAL, 3 1/4"	SQ YD	8178	8178						
44000165	HOT-MIX ASPHALT SURFACE REMOVAL, 4"	SQ YD	125319	125319						
44000169	HOT-MIX ASPHALT SURFACE REMOVAL, 5"	SQ YD	124928	124928						
44000171	HOT-MIX ASPHALT SURFACE REMOVAL, 5 1/2"	SQ YD	9207	9207						
44000300	CURB REMOVAL	FOOT	140	140						
44200583	CLASS A PATCHES, TYPE IV, 12 INCH	SQ YD	1656	1656						
44200610	CLASS A PATCHES, TYPE II, 13 INCH	SQ YD	307	307						

* SPECIALTY ITEMS

CODE NO.	ITEM	UNIT	TOTAL QUANTITY	CONSTRUCTION CODE						
				NHPP 90%FED/10%STATE	NHPP 90%FED/10%STATE	NHPP 90%FED/10%STATE	NHPP 90%FED/10%STATE	NHPP 90%FED/10%STATE	NHPP 90%FED/10%STATE	
				ROADWAY	BRIDGE	BRIDGE	BRIDGE	BRIDGE	BRIDGE	
				0005 RURAL	0013 038-0132	0013 038-0126	0013 038-0076	0013 038-0151	0013 038-0152	
44200612	CLASS A PATCHES, TYPE III, 13 INCH	SQ YD	54	54						
44213000	PATCHING REINFORCEMENT	SQ YD	2017	2017						
44213200	SAW CUTS	FOOT	3558	3558						
44213204	TIE BARS 3/4"	EACH	2239	2239						
48101200	AGGREGATE SHOULDERS, TYPE B	TON	872	872						
48102100	AGGREGATE WEDGE SHOULDER, TYPE B	TON	4834	4834						
48203029	HOT-MIX ASPHALT SHOULDERS, 8"	SQ YD	467	467						
50102400	CONCRETE REMOVAL	CU YD	6.7					3.1	3.6	
50300225	CONCRETE STRUCTURES	CU YD	20.9		3.7	7.8	9.4			
50300300	PROTECTIVE COAT	SQ YD	85.6		12.5	31.9	41.2			
50800205	REINFORCEMENT BARS, EPOXY COATED	POUND	2384		362	924	1098			
50900200	STEEL RAILING, TYPE 2399	FOOT	174					81	93	
54213669	PRECAST REINFORCED CONCRETE FLARED END SECTIONS 24"	EACH	3	3						
550A0400	STORM SEWERS, CLASS A, TYPE 2 21"	FOOT	32	32						

* SPECIALTY ITEMS

BUCKLEY INTERCHANGE - HMA MAINLINE RAMP SCHEDULE												
LOCATION		LENGTH	RAMP WIDTH	HMA** SURF REM VAR DEPTH	HMA** SURF REM 3.75"	BIT MATLS TACK CT	POLY HMA BC IL-9.5 N90	POLY HMA SC IL-9.5 N90, MX D	POLY HMA BC (HM) N90	MIX CR JTS & FLANGE-WAYS	TEMP RAMP	MATL TRANSF DEVICE
STA	- STA	FOOT	FOOT	SQ YD	SQ YD	POUND	TON	TON	TON	TON	SQ YD	TON
RAMP A - SE RAMP (NB I-57 ENTRANCE RAMP)												
0+14	- 0+44	30	VAR	193.3		130	19	16	0.10	0.06	111	638
0+44	- 1+10	66	VAR		149.4	101	15	13	0.07	0.05	22	
1+10	- 8+68	758	16		1,347.6	910	132	113	0.67	0.41		
* 8+68	- 11+28	260	16	462.2		312	91	39	0.23	0.14	30	
* 11+28	- 18+88	760	VAR	718.0		485	141	60	0.36	0.22		
RAMP B - SE RAMP (NB I-57 EXIT RAMP)												
* 0+00	- 4+39	439	VAR	279.9		252	55	24	0.14	0.09		675
* 4+39	- 6+00	161	16	286.2		258	56	24	0.14	0.09	30	
6+00	- 19+72	1,372	16		2,439.1	2,195	239	205	1.22	0.74		
19+72	- 20+29	57	VAR		139.5	126	14	12	0.07	0.05	22	
20+29	- 20+72	43	VAR	258.8		233	25	22	0.13	0.08	111	
RAMP C - NW RAMP (SB I-57 EXIT RAMP)												
* 0+00	- 2+82	282	VAR	266.7		180	52	22	0.13	0.09		738
* 2+82	- 6+00	318	16	565.3		382	111	48	0.28	0.17	24	
6+00	- 19+43	1,343	16		2,387.6	1,612	234	201	1.19	0.72		
19+43	- 20+00	57	VAR		135.4	91	13	11	0.07	0.05	22	
20+00	- 20+42	42	VAR	252.4	-	170	25	21	0.13	0.08	111	
RAMP D - SW RAMP (SB I-57 ENTRANCE RAMP)												
0+12	- 0+42	30	VAR	194.6		131	19	16	0.10	0.06	111	656
0+42	- 0+97	55	VAR		113.0	76	11	10	0.06	0.04	22	
0+97	- 9+22	825	16		1,466.7	990	144	123	0.73	0.45		
* 9+22	- 11+92	270	16	480.0		324	94	40	0.24	0.15	24	
* 11+92	- 19+43	751	VAR	708.2		478	139	60	0.35	0.22		
HMA RAMP TOTALS		7,919		4,666	8,178	9,436	1,628	1,079	6	4	640	2,707

* ADDITIONAL BINDER ADDED TO TRANSITION TO I-57 MAINLINE HMA THICKNESS

** HMA SHALL BE REMOVED TO THE ORIGINAL PCC PAVEMENT AND SHALL REQUIRE ADJUSTING MILLING DEPTHS TO COMPLETE THE REMOVAL TO PREVENT SCABBING.

EXPANSION JOINT REHABILITATION		
LOCATION	LANE	LENGTH
		FOOT
962+95	SBL	24
1130+31	NBL	24
1184+60	NBL	24
1184+60	SBL	24
1189+20	SBL	24
1241+20	SBL	24
TOTAL		144

STATIONS ARE APPROXIMATE

BRIDGE RESURFACING SCHEDULE							
STA. TO STA.		LENGTH	WIDTH	POLY HMA SURF SMA IL 12.5 MX E N80 (1.5")	LONG JOINT SEAL (1 APP)	MIX JTS, CRACKS & FLGWYS	BIT MAT'L TACK COAT
FROM	TO	FT	FT	TONS	FOOT	TON	POUND
SOUTHBOUND - SN 038-0151 BRIDGE							
1186+34	1187+82	148	40	55.3	148	0.20	296.0
NORTHBOUND - SN 038-0152 BRIDGE							
1186+19	1187+66	147	40	54.9	147	0.20	294.0
BRIDGE RESURF TOTALS		295		110	295	0.4	590

EXISTING STRUCTURE: STRUCTURES 038-0151 & 038-0152 ARE TWIN 3-SPAN SPAN BRIDGES CONSISTING OF 3-SPAN SOLID SLAB DECK ON STUB ABUTMENTS AND CAP & SOLID WALL PIERS. IT WAS CONSTRUCTED IN 1968 AS SECTION 38-7B. IN 1976, THE HMA WAS ADDED TO THE DECK AND SOME REPAIRS WERE PERFORMED. IN 1999, HMA SURFACE WAS REMOVED AND MICROSILICA CONCRETE OVERLAY WAS ADDED AS FINAL WEARING SURFACE IN ADDITION TO SOME STRUCTURAL REPAIRS. IN 2000, MINOR REPAIRS WERE PERFORMED ON THE PCC RAILING AND CHANNEL EXCAVATION WAS INCLUDED. IN 2012 AND 2016, CONCRETE DECK SEALER WAS APPLIED TO THE DECK. TRAFFIC WILL BE MAINTAINED WITH TEMPORARY BARRIER WALLS.

SCOPE OF WORK

1. SET UP TRAFFIC CONTROL USING TEMPORARY BARRIER WALL AT EACH WORK AREA.
2. REMOVE EXISTING PCC HANDRAIL AS SHOWN IN PLANS.
3. INSTALL BRIDGE HANDRAIL TY 2399 AT AREAS DESIGNATED IN THE PLANS.
4. RESTORE SURROUNDING WORK AREA
5. INSTALL GUARDRAIL PRIOR REOPENING THE ROAD.

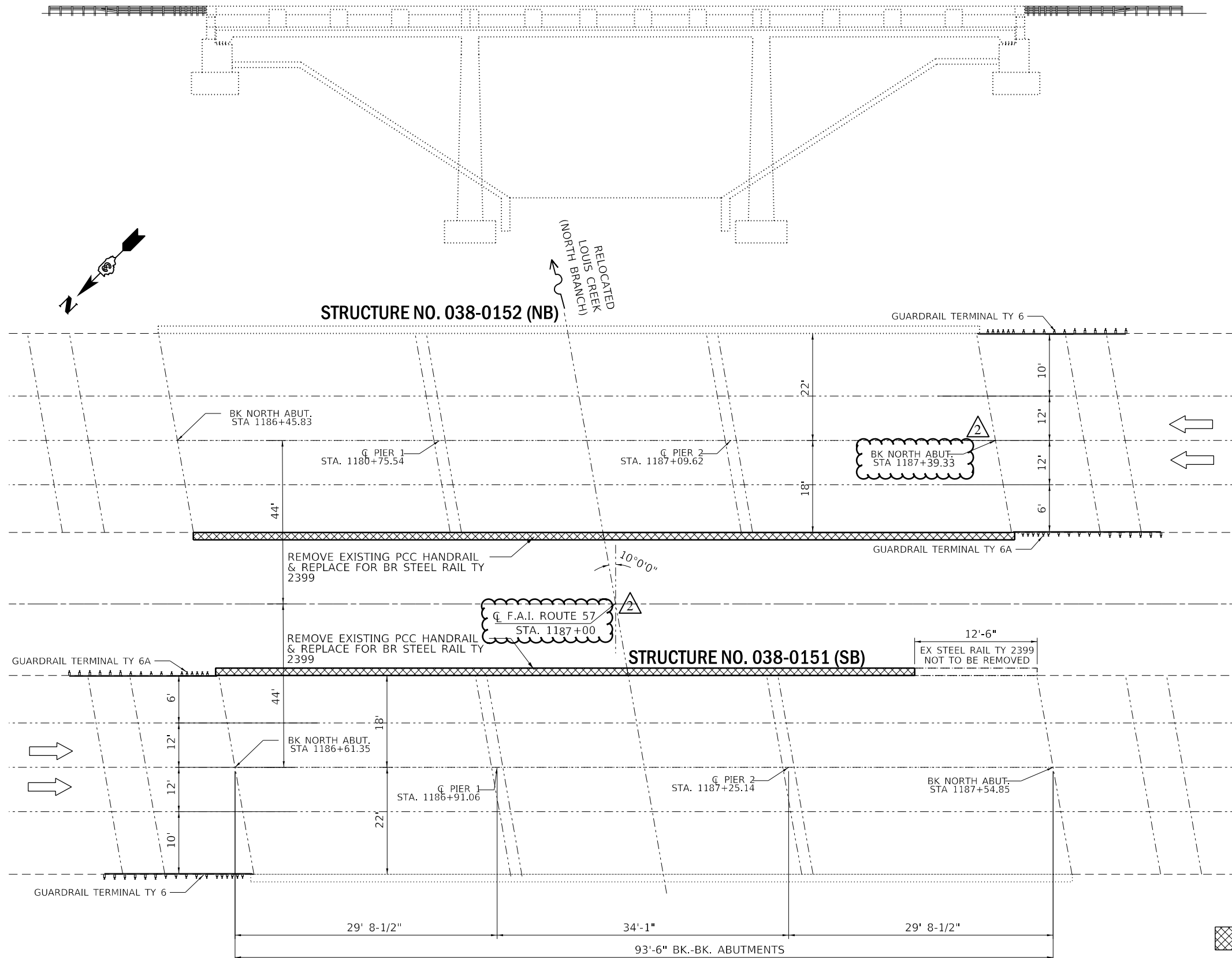
NOTES

PLAN DIMENSIONS AND DETAILS RELATIVE TO EXISTING PLANS ARE SUBJECT TO NOMINAL CONSTRUCTION VARIATIONS. THE CONTRACTOR SHALL FIELD VERIFY EXISTING DIMENSIONS AND DETAILS AFFECTING NEW CONSTRUCTION AND MAKE NECESSARY APPROVED ADJUSTMENTS PRIOR TO CONSTRUCTION OR ORDERING MATERIALS. SUCH VARIATIONS SHALL NOT BE THE CAUSE FOR ADDITIONAL COMPENSATION FOR A CHANGE IN SCOPE OF THE WORK, HOWEVER, THE CONTRACTOR WILL BE PAID FOR THE QUANTITY ACTUALLY FURNISHED AT THE UNIT PRICE BID FOR THE WORK.

REINFORCEMENT BARS DESIGNATED (E) SHALL BE EPOXY COATED.

TOTAL BILL OF MATERIAL (STR 038-0151 & 038-0152)

ITEM	UNIT	TOTAL
Concrete Removal	Cu. Yd.	6.7
Steel Railing Type 2399	Foot	174



Expires 11-30-2022
David Carl Puze
 02/07/2022

MODEL: \\MODELS\MARIS... FILE: MARIS..._work\spw\calderon\05215370\366\6163-shr-bridge_Repair.dgn

USER NAME = calderon	DESIGNED - BDD	REVISED -
PLOT SCALE = 100.0000' / in.	CHECKED - SMR	REVISED -
PLOT DATE = 12/17/2021	DATE -	REVISED -

**STATE OF ILLINOIS
 DEPARTMENT OF TRANSPORTATION**

**STRUCTURAL REPAIRS
 038-0151 (SB)/038-0152 (NB)**

SCALE: SHEET 1 OF 7 SHEETS STA. TO STA.

F.A.I. RTE.	SECTION	COUNTY	TOTAL SHEETS	SHEET NO.
57	(38-7,38-6)RS	IROQUOIS	130	106
CONTRACT NO. 66H63			ILLINOIS FED. AID PROJECT	