

STATE OF ILLINOIS
DEPARTMENT OF TRANSPORTATION

F.A.P. RTE.	SECTION	COUNTY	TOTAL SHEETS	SHEET NO.
326	2021-026-RS	KANE	25	1
		ILLINOIS	CONTRACT NO. 62N60	

D-91-110-21

FOR INDEX OF SHEETS, SEE SHEET NO. 2

THE PROJECT IS LOCATED IN THE VILLAGES OF LILY LAKE AND CAMPTON HILLS

PROPOSED HIGHWAY PLANS

FAP ROUTE 326: IL-47
FROM BURLINGTON RD. TO IL-64 (NORTH AVE.)
SECTION: 2021-026-RS
PROJECT: NHPP-AW3Z (717)
SMART OVERLAY WITH ADA IMPROVEMENTS
KANE COUNTY

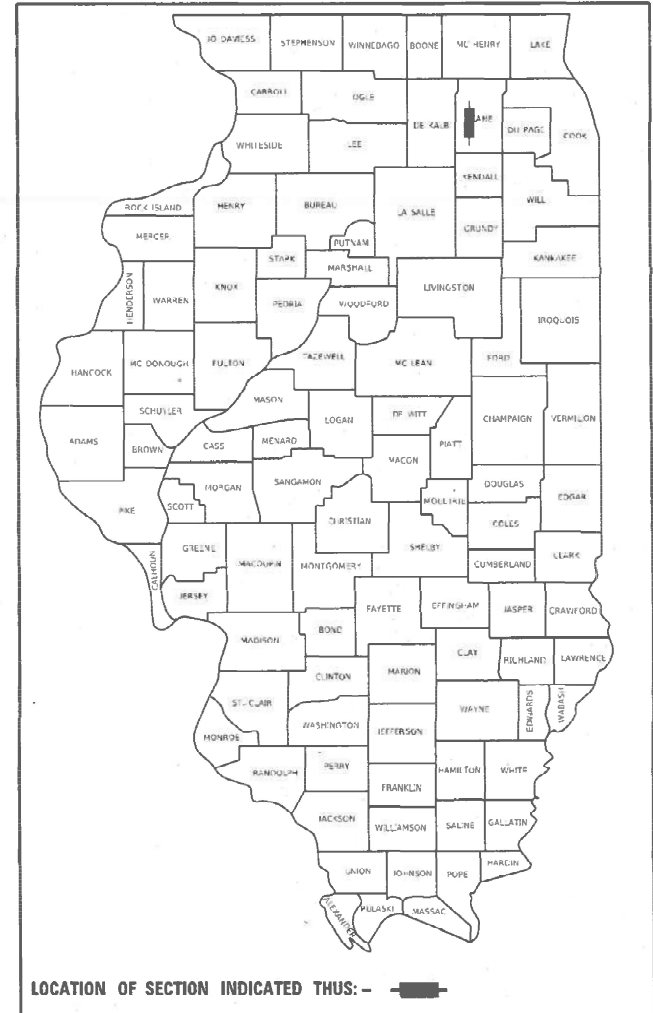
TRAFFIC DATA

2019 ADT

IL RTE 47 = 7,650

POSTED SPEED LIMIT = 40 - 55 MPH

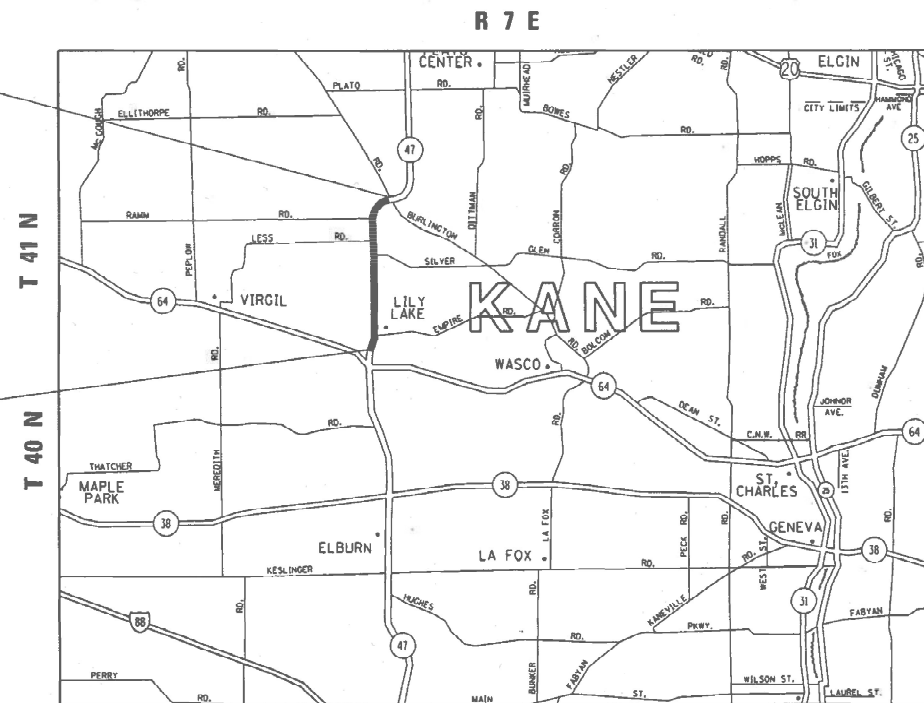
C-91-133-21



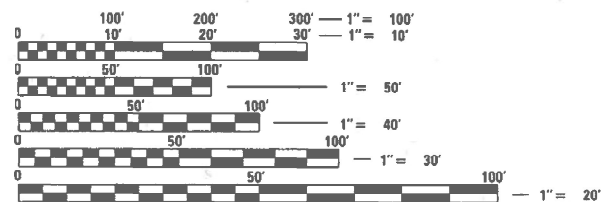
PROJECT ENDS
STA 198 + 50

OMISSION
STA. 125 + 79 TO STA. 127 + 06

PROJECT BEGIN
STA 25 + 25



CAMPTON & PLATO TOWNSHIPS



FULL SIZE PLANS HAVE BEEN PREPARED USING STANDARD ENGINEERING SCALES. REDUCED SIZED PLANS WILL NOT CONFORM TO STANDARD SCALES. IN MAKING MEASUREMENTS ON REDUCED PLANS, THE ABOVE SCALES MAY BE USED.

J.U.L.I.E.
JOINT UTILITY LOCATION INFORMATION FOR EXCAVATORS
1-800-892-0123
OR 811

PROJECT ENGINEER: RODRIGO LEDEZMA (847) 705-4580
PROJECT MANAGER: J. ALAIN MIDY (847) 221-3056

GROSS LENGTH = 17,325 FT. = 3.28 MILE
NET LENGTH = 17,198 FT. = 3.26 MILE

CONTRACT NO. 62N60

STATE OF ILLINOIS
DEPARTMENT OF TRANSPORTATION

SUBMITTED DECEMBER 9, 2021

Jose Luis Lopez
REGIONAL ENGINEER

February 4, 2022
[Signature]
ENGINEER OF DESIGN AND ENVIRONMENT

February 4, 2022
Stephen M. Lewis
DIRECTOR OF HIGHWAYS PROJECT IMPLEMENTATION

PRINTED BY THE AUTHORITY OF THE STATE OF ILLINOIS

INDEX OF SHEETS

STATE HIGHWAY STANDARDS

GENERAL NOTES

SHEET NO. DESCRIPTION

1	COVER SHEET
2-3	INDEX OF SHEETS, STATE STANDARDS & GENERAL NOTES
4-5	SUMMARY OF QUANTITIES
6	TYPICAL SECTIONS
7-13	ROADWAY PLAN
14	DETAILS FOR FRAMES AND LIDS ADJUSTMENT WITH MILLING (BD-08)
15	PAVEMENT PATCHING FOR HMA SURFACED PAVEMENT (BD-22)
16	CURB OR CURB AND GUTTER REMOVAL AND REPLACEMENT (BD-24)
17	BUTT JOINT AND HMA TAPER DETAILS (BD-32)
18	TRAFFIC CONTROL AND PROTECTION FOR SIDE ROADS, INTERSECTIONS, AND DRIVEWAYS (TC-10)
19	TYPICAL APPLICATIONS RAISED REFLECTIVE PAVEMENT MARKERS (SNOW PLOW RESISTANT) (TC-11)
20	DISTRICT ONE TYPICAL PAVEMENT MARKINGS (TC-13)
21	TRAFFIC CONTROL AND PROTECTION AT TURN BAYS (TO REMAIN OPEN TO TRAFFIC) (TC-14)
22	SHORT TERM PAVEMENT MARKING LETTERS AND SYMBOLS (TC-16)
23	ARTERIAL ROAD INFORMATION SIGN (TC-22)
24	PROJECT DETAIL FOR SINGLE PERPENDICULAR CURB RAMP (PD-01)
25	RUMBLE STRIPES FOR CENTERLINE, NON - FREEWAY (BD-55)

STANDARD NO.	DESCRIPTION
000001-08	STANDARD SYMBOLS, ABBREVIATIONS AND PATTERNS
442201-03	CLASS C AND D PATCHES
424001-11	PERPENDICULAR CURB RAMPS FOR SIDEWALKS
701006-05	OFF-ROAD OPERATION, 2L, 2W, 15' to 24" FROM PAVEMENT EDGE
701011-04	OFF-ROAD MOVING OPERATIONS, 2L, 2W, DAY ONLY
701301-04	LANE CLOSURE , 2L, 2W, SHORT TIME OPERATIONS
701306-04	LANE CLOSURE , 2L, 2W, SLOW MOVING OPERATIONS-DAY ONLY, FOR SPEED ≥ 45 MPH
701311-03	LANE CLOSURE , 2L, 2W, MOVING OPERATIONS-DAY ONLY
701336-07	LANE CLOSURE , 2L, 2W, WORK AREAS IN SERIES, FOR SPEEDS > 45 MPH
701501-06	URBAN LANE CLOSURE, 2L, 2W, UNDIVIDED
701801-06	LANE CLOSURE MULTILANE, 1W OR 2W CROSSWALK OR SIDEWALK CLOSURE
701901-08	TRAFFIC CONTROL DEVICES

- BEFORE STARTING ANY EXCAVATION, THE CONTRACTOR SHALL CALL "JULIE" AT (800) 892-0123 OR 811 FOR FIELD LOCATIONS OF BURIED ELECTRIC, TELEPHONE, AND GAS FACILITIES. (48 HOUR NOTIFICATION REQUIRED)
- THE CONTRACTOR SHALL COORDINATE CONSTRUCTION ACTIVITIES WITH UTILITY COMPANIES AND THE AND VILLAGES OF LILY LAKE AND CAMPTON HILLS
- FRAMES AND GRATES ADJUSTMENT OF PRIVATE UTILITIES WITHIN THE LIMITS OF THE IMPROVEMENTS SHALL BE DONE BY THEIR RESPECTIVE OWNERS AND ARE NOT PART OF THIS CONTRACT.
- THE CONTRACTOR SHALL CONTACT DISTRICT ONE ARTERIAL TRAFFIC CONTROL SUPERVISOR AT KALPANA.KANNAN-HOSADURGA@ILLINOIS.GOV A MINIMUM OF 72 HOURS IN ADVANCE OF BEGINNING WORK.
- THE CONTRACTOR WILL NOT BE ALLOWED TO SET UP A YARD OR FIELD OFFICE ON STATE PROPERTY WITHOUT THE WRITTEN PERMISSION OF THE DEPARTMENT.
- OVERNIGHT LANE CLOSURES SHALL NOT BE ALLOWED FOR REHABILITATION PROJECTS INVOLVING DAYTIME MILLING AND RESURFACING OPERATIONS AND CLASS D PATCHING UNLESS OTHER CONDITIONS WARRANT EXTENDED LANE CLOSURES AS DETERMINED AND APPROVED IN WRITING BY THE ENGINEER OR AS PROVIDED FOR IN THE CONTRACT SPECIFICATIONS.
- IT SHALL BE THE CONTRACTOR'S RESPONSIBILITY TO VERIFY ALL DIMENSIONS AND CONDITIONS EXISTING IN THE FIELD PRIOR TO CONSTRUCTION AND ORDERING OF MATERIALS.
- DO NOT SCALE PLANS FOR CONSTRUCTION DIMENSIONS.
- THE CONTRACTOR SHALL BE REQUIRED TO PROVIDE ACCESS TO ABUTTING PROPERTY AT ALL TIMES DURING THE CONSTRUCTION OF THIS PROJECT.
- ALL PAVEMENT PATCHING LOCATIONS WILL BE DETERMINED IN THE FIELD BY THE RESIDENT ENGINEER/TECHNICIAN.
- DRAINAGE ADJUSTMENT OR RECONSTRUCTION LOCATIONS WILL BE DETERMINED IN THE FIELD BY THE ENGINEER.
- WHEN MILLED PAVEMENT IS OPEN TO TRAFFIC, THE MAXIMUM GRADE DIFFERENTIAL BETWEEN PASSES OF THE MILLING MACHINE SHALL NOT EXCEED 1½ INCHES WHERE THE SPEED LIMIT IS 45 MPH OR LESS, AND 1 INCH WHERE THE SPEED LIMIT IS OVER 45 MPH. WITH WRITTEN APPROVAL FROM THE RESIDENT ENGINEER, A MAXIMUM GRADE DIFFERENTIAL OF 3 INCHES MAY BE ALLOWED IF THE EDGE OF THE MILLING IS SLOPED A MINIMUM OF 1V:3H.
- BUTT JOINTS WILL BE INSTALLED AT THE ENDS OF RESURFACING (WHERE RESURFACING MEETS EXISTING PAVEMENT) IN ACCORDANCE WITH THE "BUTT JOINT AND HMA TAPER DETAILS" SHEET INCLUDED IN THE PLANS, UNLESS OTHERWISE SPECIFIED.
- THE RESIDENT ENGINEER SHALL CONTACT WALLY CZARNY , IDOT AREA TRAFFIC FIELD ENGINEER VIA E-MAIL AT WALTER.CZARNY@ILLINOIS.GOV, A MINIMUM OF 2 WEEKS PRIOR TO PLACEMENT OF PERMANENT PAVEMENT MARKINGS.
- BEFORE BEGINNING ANY WORK, THE CONTRACTOR SHALL RETAIN AND RECORD FOR FUTURE REFERENCE, ALL EXISTING PAVEMENT MARKING LINES (AND RAISED REFLECTIVE PAVEMENT MARKERS) IN ORDER THAT THESE LOCATIONS CAN BE RE-ESTABLISHED FOR STRIPING. EXACT LOCATIONS OF ALL PAVEMENT MARKINGS SHALL BE AS DIRECTED BY THE RESIDENT ENGINEER.
- ANY PAVEMENT MARKINGS AND RAISED REFLECTIVE PAVEMENT MARKERS OBLITERATED BY MILLING AND RESURFACING OPERATIONS ON SIDE STREETS AND ENTRANCES SHALL BE REPLACED AND PAID FOR IN KIND.
- PAVEMENT MARKING TAPE, TYPE III SHALL BE USED FOR SHORT TERM PAVEMENT MARKINGS ON ALL FINAL SURFACES.
- TEN (10) FOOT TRANSITIONS SHALL BE USED TO MATCH PROPOSED CURB AND GUTTER AND MEDIAN ITEMS OF WORK TO EXISTING CURBS AND GUTTER AND MEDIANS IN THE FIELD, UNLESS OTHERWISE SHOWN. THE TRANSITIONS SHALL BE PAID FOR AT THE CONTRACT UNIT PRICE FOR THE PROPOSED ITEMS OF WORK SPECIFIED.

MODEL: Default
 FILE NAME: p:\project-aw-beachery.com\PIV\DOT\Documents\DOT Office\District 1\Project\1102\ICAD\DATA\Design\1102-1-arh-agencere.dgn

USER NAME = eleyanah	DESIGNED -	REVISED -
	DRAWN -	REVISED -
PLOT SCALE = 101,9282' / in.	CHECKED -	REVISED -
PLOT DATE = 12/17/2021	DATE -	REVISED -

**STATE OF ILLINOIS
DEPARTMENT OF TRANSPORTATION**

**INDEX OF SHEETS, STATE STANDARDS
AND GENERAL NOTES**

SCALE: SHEET OF STA. TO STA.

F.A.P. RTE.	SECTION	COUNTY	TOTAL SHEETS	SHEET NO.
326	2021-026-RS	KANE	25	2
				CONTRACT NO. 62N60
		ILLINOIS	FED. AID PROJECT	

GENERAL NOTES

19. ALL DAMAGE TO EXISTING PAVEMENT MARKINGS OR RAISED REFLECTIVE PAVEMENT MARKERS OUTSIDE THE REMOVAL LINE SHOWN ON THE PLANS SHALL BE REPLACED AT NO ADDITIONAL COST TO THE DEPARTMENT.
20. LOCATION OF COMBINATION CONCRETE CURB AND GUTTER REMOVAL AND REPLACEMENT [OR COMBINATION CURB AND GUTTER (THE TYPE SPECIFIED ON THE PLANS)], WILL BE DETERMINED IN THE FIELD BY THE ENGINEER.
21. THE CONTRACTOR WILL BE REQUIRED TO KEEP A RECORD OF THE LOCATIONS OF PLATED STRUCTURES BY STATION AND OFFSET LEFT OR RIGHT OF THE CENTERLINE OF PAVEMENT.
22. EXISTING BROKEN FRAMES AND LIDS SHALL BE REMOVED AND DISPOSED OF BY THE CONTRACTOR AND SHALL BE REPLACED AS DIRECTED BY THE ENGINEER. REPLACEMENT FRAMES AND LIDS WILL BE PAID FOR ACCORDING TO ARTICLE 109.04 OF THE STANDARD SPECIFICATIONS UNLESS A SEPARATE PAY ITEM HAS BEEN PROVIDED.
23. THESE PLANS HAVE BEEN PREPARED FROM NOTES RECEIVED FROM THE BUREAU OF CONSTRUCTION.
24. THE CONTRACTOR WILL BE REQUIRED TO KEEP A RECORD OF THE LOCATIONS OF THE BURIED STRUCTURES ACCORDING TO THE STATION AND DISTANCE LEFT OR RIGHT OF THE CENTERLINE OF PAVEMENT. UPON COMPLETION OF THE WORK, THE CONTRACTOR WILL DELIVER THE RECORD TO THE ENGINEER.
25. DOUBLE LANE MARKERS ARE TO BE USED AS SHOWN ON THE DISTRICT ONE DETAIL "TYPICAL APPLICATIONS RAISED REFLECTIVE PAVEMENT MARKERS (SNOW-PLOW RESISTANT)" SHOWN IN THE PLANS.

MODEL: Default
 FILE NAME: \\sulfur-pw-bentley.com\P\W\DOT\Documents\DOT Office\District 1\Project\11021\CAD\data\Design\11021-Sub\gennotes.dgn

USER NAME = eleyanah	DESIGNED -	REVISED -
	DRAWN -	REVISED -
PLOT SCALE = 101,9282' / in.	CHECKED -	REVISED -
PLOT DATE = 12/17/2021	DATE -	REVISED -

STATE OF ILLINOIS DEPARTMENT OF TRANSPORTATION

INDEX OF SHEETS, STATE STANDARDS AND GENERAL NOTES

SCALE: SHEET OF SHEETS STA. TO STA.

F.A.P. RTE.	SECTION	COUNTY	TOTAL SHEETS	SHEET NO.
326	2021-026-RS	KANE	25	3
CONTRACT NO.				62N60
ILLINOIS FED. AID PROJECT				

SUMMARY OF QUANTITIES				CONSTRUCTION TYPE CODE					SUMMARY OF QUANTITIES				CONSTRUCTION TYPE CODE				
CODE NO	ITEM	UNIT	URBAN TOTAL QUANTITIES	0005 80% FED 20% STATE					CODE NO	ITEM	UNIT	URBAN TOTAL QUANTITIES	0005 80% FED 20% STATE				
20200100	EARTH EXCAVATION	CU YD	3	3					44201851	CLASS D PATCHES, TYPE II, 17 INCH	SO YD	575	575				
21101615	TOPSOIL FURNISH AND PLACE, 4"	SO YD	116	116					44201855	CLASS D PATCHES, TYPE III, 17 INCH	SO YD	180	180				
25200110	SODDING, SALT TOLERANT	SO YD	116	116					44201857	CLASS D PATCHES, TYPE IV, 17 INCH	SO YD	513	513				
25200200	SUPPLEMENTAL WATERING	UNIT	0.2	0.2					48102100	AGGREGATE WEDGE SHOULDER, TYPE B	TON	377	377				
40600290	BITUMINOUS MATERIALS (TACK COAT)	POUND	23715	23715					* 66900200	NON-SPECIAL WASTE DISPOSAL	CU YD	3	3				
40600370	LONGITUDINAL JOINT SEALANT	FOOT	17198	17198					* 66900530	SOIL DISPOSAL ANALYSIS	EACH	2	2				
40600400	MIXTURE FOR CRACKS, JOINTS, AND FLANGEWAYS	TON	80	80					* 66901001	REGULATED SUBSTANCES PRE-CONSTRUCTION PLAN	LSUM	1	1				
40600982	HOT-MIX ASPHALT SURFACE REMOVAL - BUTT JOINT	SO YD	148	148					* 66901003	REGULATED SUBSTANCES FINAL CONSTRUCTION REPORT	LSUM	1	1				
40605026	POLYMERIZED HOT-MIX ASPHALT SURFACE COURSE, STONE MATRIX ASPHALT, 9.5, MIX "F", N80,	TON	5165	5165					* 66901006	REGULATED SUBSTANCES MONITORING	CAL DA	1	1				
42001300	PROTECTIVE COAT	SO YD	120	120					67100100	MOBILIZATION	L SUM	1	1				
42400200	PORTLAND CEMENT CONCRETE SIDEWALK 5 INCH	SO FT	175	175					70100460	TRAFFIC CONTROL AND PROTECTION, STANDARD 701306	L SUM	1	1				
42400800	DETECTABLE WARNINGS	SO FT	20	20					70100600	TRAFFIC CONTROL AND PROTECTION, STANDARD 701336	L SUM	1	1				
44000156	HOT-MIX ASPHALT SURFACE REMOVAL, 1 3/4"	SO YD	52701	52701					70102620	TRAFFIC CONTROL AND PROTECTION, STANDARD 701501	L SUM	1	1				
44000600	SIDEWALK REMOVAL	SO FT	175	175													

* SPECIALTY ITEM

FILE NAME =	USER NAME = eleyanah	DESIGNED -	REVISED -
pw:\1101-pw.bentley.com\FW\DOT\Documents\VDOT - Office\District\Projects\1102\CADData\Design\1102\sm-S002.dwg		DRAWN -	REVISED -
PLOT SCALE = 101/7667' / 1in.		CHECKED -	REVISED -
PLOT DATE = 12/11/2021		DATE -	REVISED -

STATE OF ILLINOIS DEPARTMENT OF TRANSPORTATION				IL ROUTE 47 FROM BURLINGTON RD TO IL ROUTE 64 SUMMARY OF QUANTITIES				F.A.P. RTE.	SECTION	COUNTY	TOTAL SHEETS	SHEET NO.
				SCALE: SHEET NO. OF SHEETS STA. TO STA.				326	2021-026-RS	KANE	25	4
								CONTRACT NO. 62N60				
FED. ROAD DIST. NO. 1 ILLINOIS FED. AID PROJECT												

SUMMARY OF QUANTITIES			CONSTRUCTION TYPE CODE					SUMMARY OF QUANTITIES			CONSTRUCTION TYPE CODE							
CODE NO	ITEM	UNIT	URBAN TOTAL QUANTITIES	0005 80% FED 20% STATE					CODE NO	ITEM	UNIT	URBAN TOTAL QUANTITIES	0005 80% FED 20% STATE					
70102640	TRAFFIC CONTROL AND PROTECTION, STANDARD 701801	L SUM	1	1					78300202	PAVEMENT MARKING REMOVAL - WATER BLASTING	SO FT	23493	23493					
70300100	SHORT TERM PAVEMENT MARKING	FOOT	29057	29057					X0320050	CONSTRUCTION LAYOUT (SPECIAL)	L SUM	1	1					
70300150	SHORT TERM PAVEMENT MARKING REMOVAL	SO FT	2422	2422					X0326898	CENTER LINE - RUMBLE STRIP - 16"	FOOT	16570	16570					
70300221	TEMPORARY PAVEMENT MARKING - LINE 4" - PAINT	FOOT	62400	62400					X2020110	GRADING AND SHAPING SHOULDERS	UNIT	278	278					
70300281	TEMPORARY PAVEMENT MARKING - LINE 24" - PAINT	FOOT	136	136				<input type="checkbox"/>	X5537800	STORM SEWERS TO BE CLEANED 12"	FOOT	175	175					
70306120	TEMPORARY PAVEMENT MARKING - LINE 4" - TYPE III TAPE	FOOT	7265	7265					X6700407	ENGINEER'S FIELD OFFICE, TYPE A (D1)	CAL MO	6	6					
* 78000200	THERMOPLASTIC PAVEMENT MARKING - LINE 4"	FOOT	36400	36400					X7800815	HOT SPRAY THERMOPLASTIC PAVEMENT MARKING LINE - 4 INCH	FOOT	26000	26000					
* 78000400	THERMOPLASTIC PAVEMENT MARKING - LINE 6"	FOOT	55	55				<input type="checkbox"/>	Z0004562	COMBINATION CONCRETE CURB AND GUTTER REMOVAL AND REPLACEMENT	FOOT	600	600					
* 78000650	THERMOPLASTIC PAVEMENT MARKING - LINE 24"	FOOT	136	136					Z0018500	DRAINAGE STRUCTURES TO BE CLEANED	EACH	9	9					
* 78009004	MODIFIED URETHANE PAVEMENT MARKING - LINE 4"	FOOT	310	310				<input type="checkbox"/>	Z0030850	TEMPORARY INFORMATION SIGNING	SO FT	51.4	51.4					
* 78100100	RAISED REFLECTIVE PAVEMENT MARKER	EACH	467	467				<input type="checkbox"/>	Z0076600	TRAINEES	HOURS	500	500					
78300200	RAISED REFLECTIVE PAVEMENT MARKER REMOVAL	EACH	467	467				<input type="checkbox"/>	Z0076604	TRAINEES - TRAINING PROGRAM GRADUATE	HOURS	500	500					

NON-PART 100% STATE

0042

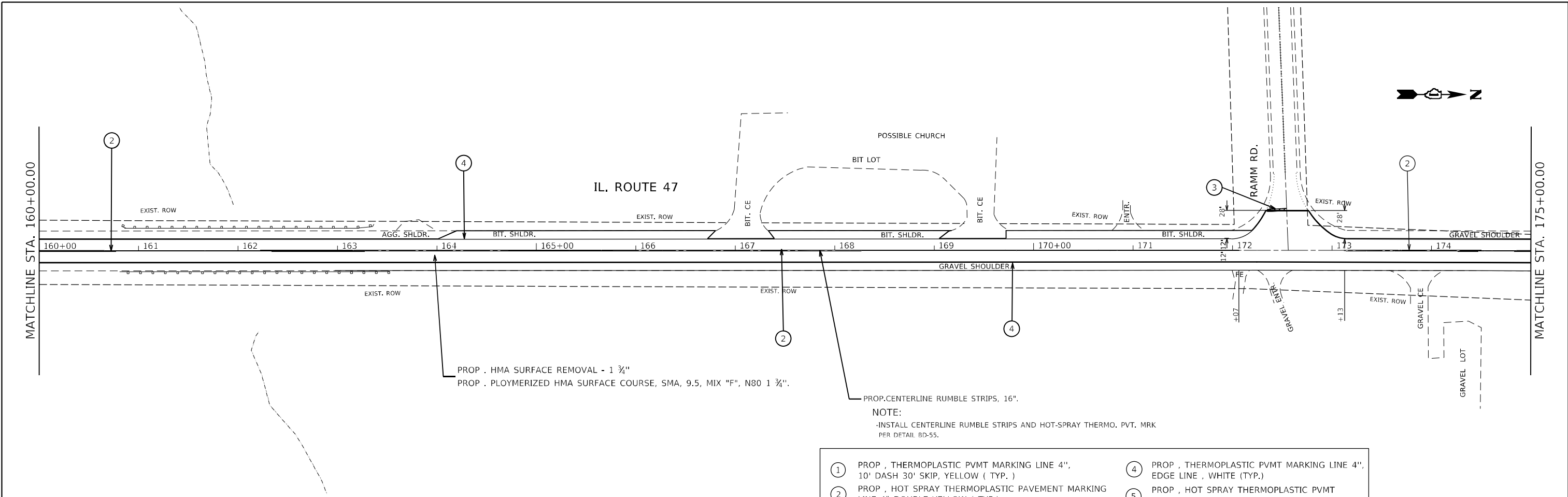
FILE NAME =	USER NAME =	DESIGNED -	REVISED -
pw\vidot-pw\berkeley.com\FWIDOT\Documents\DOT OFFICE\District 1\Projects\DI102\NCAD\Design\DI102-11-500.dgn	alloyan	DRAWN -	REVISED -
		CHECKED -	REVISED -
		DATE -	REVISED -

**STATE OF ILLINOIS
DEPARTMENT OF TRANSPORTATION**

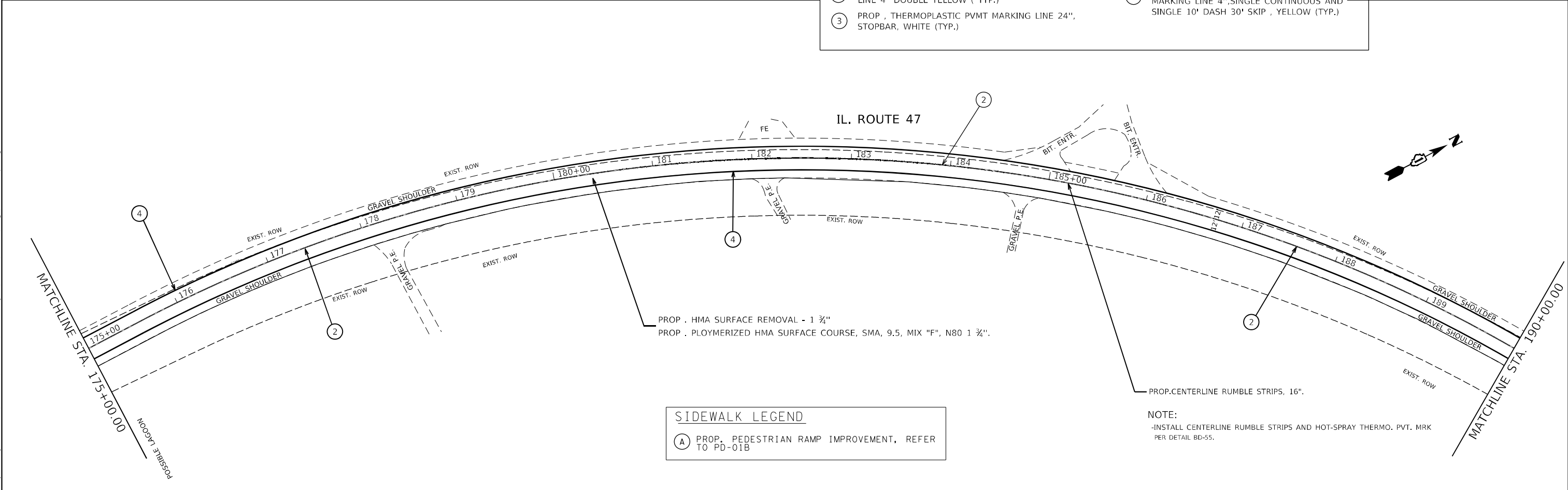
**IL ROUTE 47 FROM BURLINGTON RD TO IL ROUTE 64
SUMMARY OF QUANTITIES**

SCALE: SHEET NO. OF SHEETS STA. TO STA.

F.A.P. RTE.	SECTION	COUNTY	TOTAL SHEETS	SHEET NO.
326	2021-026-RS	KANE	25	5
FED. ROAD DIST. NO. 1 ILLINOIS FED. AID PROJECT			CONTRACT NO. 62N60	



- ① PROP. THERMOPLASTIC PVMT MARKING LINE 4", 10' DASH 30' SKIP, YELLOW (TYP.)
- ② PROP. HOT SPRAY THERMOPLASTIC PAVEMENT MARKING LINE 4" DOUBLE YELLOW (TYP.)
- ③ PROP. THERMOPLASTIC PVMT MARKING LINE 24", STOPBAR, WHITE (TYP.)
- ④ PROP. THERMOPLASTIC PVMT MARKING LINE 4", EDGE LINE, WHITE (TYP.)
- ⑤ PROP. HOT SPRAY THERMOPLASTIC PVMT MARKING LINE 4", SINGLE CONTINUOUS AND SINGLE 10' DASH 30' SKIP, YELLOW (TYP.)



- SIDEWALK LEGEND**
- Ⓐ PROP. PEDESTRIAN RAMP IMPROVEMENT, REFER TO PD-01B

NOTE:
-INSTALL CENTERLINE RUMBLE STRIPS AND HOT-SPRAY THERMO. PVT. MRK PER DETAIL BD-55.

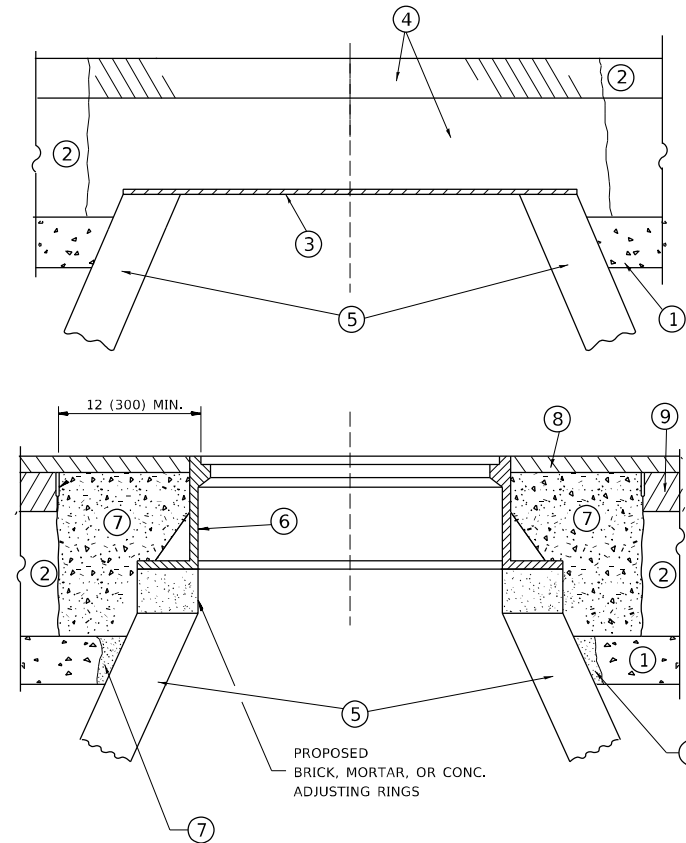
MODEL: Default
 FILE NAME: p:\project\paw_bentley.com\p\indot\Documents\DOT Office\Drawings\11021\CADData\Design\11021-Sub-A-Band.dgn

USER NAME = eleyanah	DESIGNED -	REVISED -
PLOT SCALE = 100,0000' / in.	DRAWN -	REVISED -
PLOT DATE = 12/17/2021	CHECKED -	REVISED -
	DATE -	REVISED -

**STATE OF ILLINOIS
DEPARTMENT OF TRANSPORTATION**

ROADWAY PLAN	
IL. ROUTE 47 (BURLINGTON RD. TO IL. ROUTE 64)	
SCALE: 1"=50'	SHEET OF SHEETS STA. TO STA.

F.A.P. RTE. 326	SECTION 2021-026-R5	COUNTY KANE	TOTAL SHEETS 25	SHEET NO. 12
CONTRACT NO. 62N60				
ILLINOIS		FED. AID PROJECT		



CONSTRUCTION PROCEDURES

STAGE 1 (BEFORE PAVEMENT MILLING)

- A) REMOVE A MINIMUM OF 12 (300) OF THE PAVEMENT FROM AROUND THE STRUCTURE.
- B) REMOVE THE EXISTING FRAME AND LID FROM THE STRUCTURE.
- C) COVER THE STRUCTURE OPENING WITH A 36 (900) DIAMETER METAL PLATE.
- D) BACKFILL WITH CRUSHED STONE AND A MINIMUM 1½ (40) THICK HMA SURFACE MIX APPROVED BY THE ENGINEER.

STAGE 2 (AFTER PAVEMENT MILLING)

- A) REMOVE THE HMA SURFACE MIX AND CRUSHED STONE.
- B) INSTALL THE FRAME AND LID; ADJUST THE FRAME TO ITS FINAL SURFACE ELEVATION.
- C) THE SURROUNDING SPACE SHALL BE FILLED WITH CLASS PP-1 * CONCRETE TO THE ELEVATION OF THE SURFACE OF THE EXISTING BASE COURSE OR THE BINDER COURSE.

* UNLESS OTHERWISE SPECIFIED IN THE PLANS.

THE PROCEDURE EXPLAINED ABOVE SHALL CONFORM TO THE APPLICABLE PORTIONS OF SECTIONS 353, 406, 602, AND 603 OF THE STANDARD SPECIFICATIONS EXCEPT THAT "THE CONTRACTOR SHALL ADJUST THE STRUCTURES TO THE FINISHED PAVEMENT ELEVATION NO MORE THAN 5 CALENDAR DAYS PRIOR TO PLACEMENT OF THE FINAL LIFT OF SURFACE UNLESS APPROVED BY THE ENGINEER."

LEGEND

- ① SUB-BASE GRANULAR MATERIAL
- ② EXISTING PAVEMENT
- ③ 36 (900) DIAMETER METAL PLATE
- ④ PROPOSED CRUSHED STONE AND HMA SURFACE MIX
- ⑤ EXISTING STRUCTURE
- ⑥ FRAME AND LID (SEE NOTES)
- ⑦ CLASS PP-1 *CONCRETE
- ⑧ PROPOSED HMA SURFACE COURSE
- ⑨ PROPOSED HMA BINDER COURSE

LOCATION OF STRUCTURES

THE CONTRACTOR WILL BE REQUIRED TO KEEP A RECORD OF THE LOCATIONS OF THE BURIED STRUCTURES ACCORDING TO THE STATION AND DISTANCE LEFT OR RIGHT OF THE CENTERLINE OF PAVEMENT. UPON COMPLETION OF THE WORK, THE CONTRACTOR WILL DELIVER THE RECORD TO THE ENGINEER.

BASIS OF PAYMENT

REMOVING FRAMES AND LIDS ON DRAINAGE AND UTILITY STRUCTURES IN THE PAVEMENT PRIOR TO MILLING, AND ADJUSTING TO FINAL GRADE PRIOR TO PLACING THE SURFACE COURSE, WILL BE PAID FOR AT THE CONTRACT UNIT PRICE EACH FOR "FRAMES AND LIDS TO BE ADJUSTED (SPECIAL)."

THIS WORK WILL NOT BE PAID FOR WHEN DRAINAGE AND UTILITY STRUCTURES ARE SPECIFIED FOR PAYMENT AS STRUCTURE RECONSTRUCTION.

NEW FRAMES AND LIDS, WHEN SPECIFIED, WILL BE PAID FOR SEPARATELY.

NOTES

EXISTING BROKEN FRAMES AND LIDS SHALL BE REMOVED AND DISPOSED OF BY THE CONTRACTOR AND SHALL BE REPLACED AS DIRECTED BY THE ENGINEER. REPLACEMENT FRAMES AND LIDS WILL BE PAID FOR IN ACCORDANCE WITH ARTICLE 109.04 OF THE STANDARD SPECIFICATIONS UNLESS A SEPARATE PAY ITEM HAS BEEN PROVIDED.

IF THE EXISTING LIDS ARE OPEN, THE FRAME WILL BE ADJUSTED TO THE ELEVATION OF THE MILLED PAVEMENT SURFACE PRIOR TO THE MILLING OPERATION. THE FRAME WILL NOT BE REMOVED AND COVERED BY THE METAL PLATE.

CITY OF CHICAGO CASTINGS ARE THE PROPERTY OF THE CITY AND THE CONTRACTOR SHALL NOTIFY THE CITY FOR REMOVAL AND DISPOSITION OF THE CASTINGS.

THE METAL PLATE USED TO COVER THE STRUCTURE SHALL REMAIN THE PROPERTY OF THE CONTRACTOR.

WHEN STRUCTURES ARE TO BE ADJUSTED OR RECONSTRUCTED, THE LOWERING AND RAISING OF THE FRAMES AND LIDS WILL NOT BE PAID FOR SEPARATELY BUT WILL BE INCLUDED IN THE COST OF THE CORRESPONDING PAY ITEM.

DETAILS FOR FRAMES AND LIDS ADJUSTMENT WITH MILLING

ALL DIMENSIONS ARE IN INCHES (MILLIMETERS) UNLESS OTHERWISE SHOWN

MODEL: Default
 FILE NAME: p:\projects\paw_bentley.com\PIV\DOT\Documents\DOT_offices\Dir\rdet_1\project\11021\CAD\data\Design\BdR5td.dgn

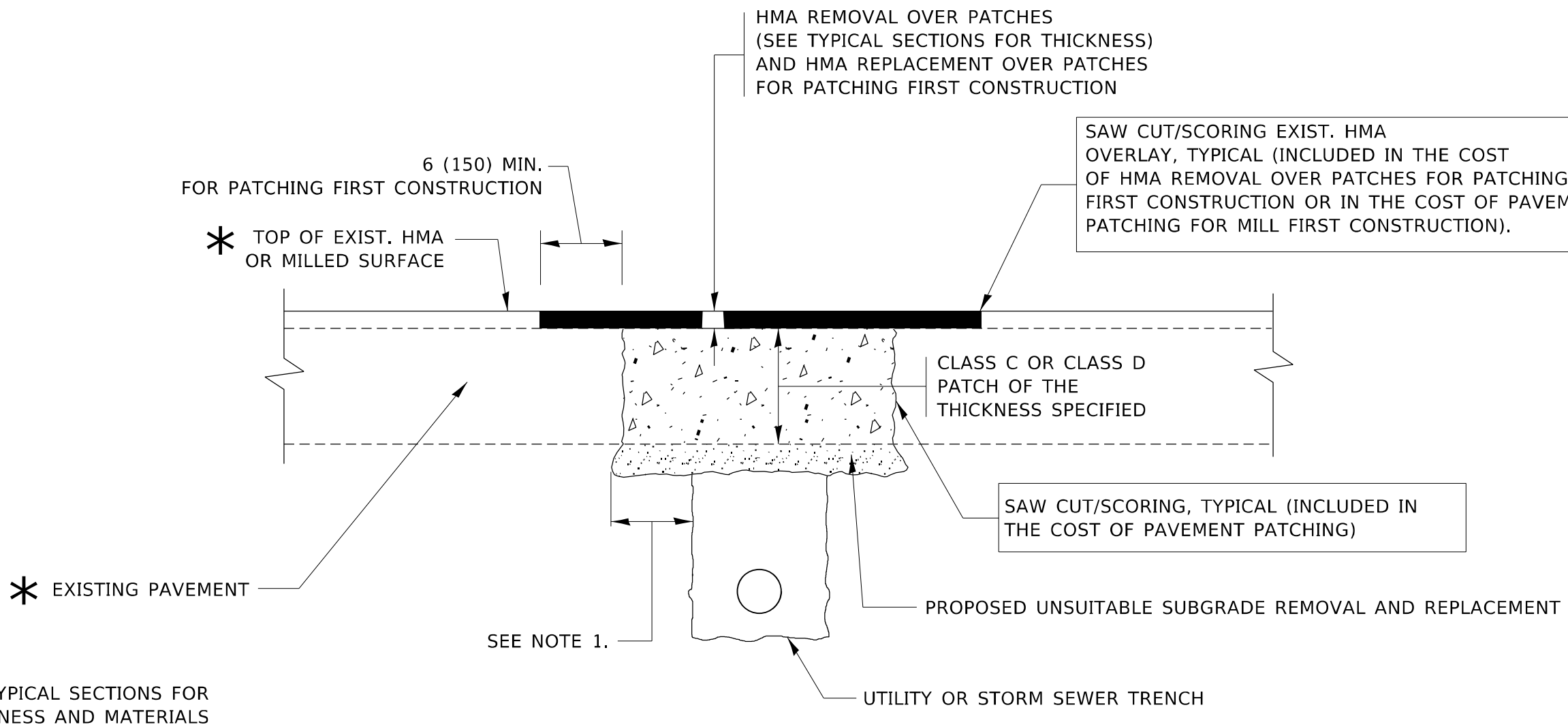
USER NAME = eleyanah	DESIGNED - R. SHAH	REVISED - R. WEDEMAN 05-14-04
	DRAWN -	REVISED - R. BORO 01-01-07
PLOT SCALE = 100,0000 ' / in.	CHECKED -	REVISED - R. BORO 03-09-11
PLOT DATE = 12/17/2021	DATE - 10-25-94	REVISED - R. BORO 12-06-11

**STATE OF ILLINOIS
DEPARTMENT OF TRANSPORTATION**

**DETAILS FOR
FRAMES AND LIDS ADJUSTMENT WITH MILLING**

SCALE: NONE SHEET 1 OF 1 SHEETS STA. TO STA.

F.A.P. RTE.	SECTION	COUNTY	TOTAL SHEETS	SHEET NO.
326	2021-026-R5	KANE	25	14
BD600-03 (BD-8)		CONTRACT NO. 62N60		
ILLINOIS FED. AID PROJECT				



NOTES:

1. THE WIDTH OF THE FULL DEPTH PATCH OVER A TRENCH SHALL BE 12 (300) WIDER ON EACH SIDE OF THE TRENCH.
2. FOR METHOD OF MEASUREMENT AND BASIS OF PAYMENT, SEE RECURRING SPECIAL PROVISION "PATCHING WITH HOT-MIX ASPHALT OVERLAY REMOVAL".

SEQUENCE OF CONSTRUCTION (PATCHING FIRST)

1. REMOVE THE EXISTING HMA MATERIAL OVER THE AREA TO BE PATCHED.
2. REMOVE AND REPLACE WITH CLASS C OR D PATCH.
3. REPLACE HMA MATERIAL OVER THE AREA TO BE PATCHED.

SEQUENCE OF CONSTRUCTION (MILLING FIRST)

1. MILL HMA FIRST IF THERE IS AT LEAST 4½ INCHES OR MORE OF HMA MATERIAL ON TOP OF THE EXISTING PAVEMENT OR IF THE PAVEMENT IS FULL DEPTH HMA. A MINIMUM OF 2 INCHES OF HMA MATERIAL SHALL BE IN PLACE AFTER MILLING.
2. REMOVE AND REPLACE WITH FULL DEPTH CLASS D PATCHES TO TOP OF MILLED SURFACE.

ALL DIMENSIONS ARE IN INCHES (MILLIMETERS) UNLESS OTHERWISE SHOWN.

MODEL: Default
 FILE: 326-04-01-02-01-001-CADDATA\Design\Bd400.dgn
 PROJECT: 326-04-01-02-01-001-CADDATA\Design\Bd400.dgn

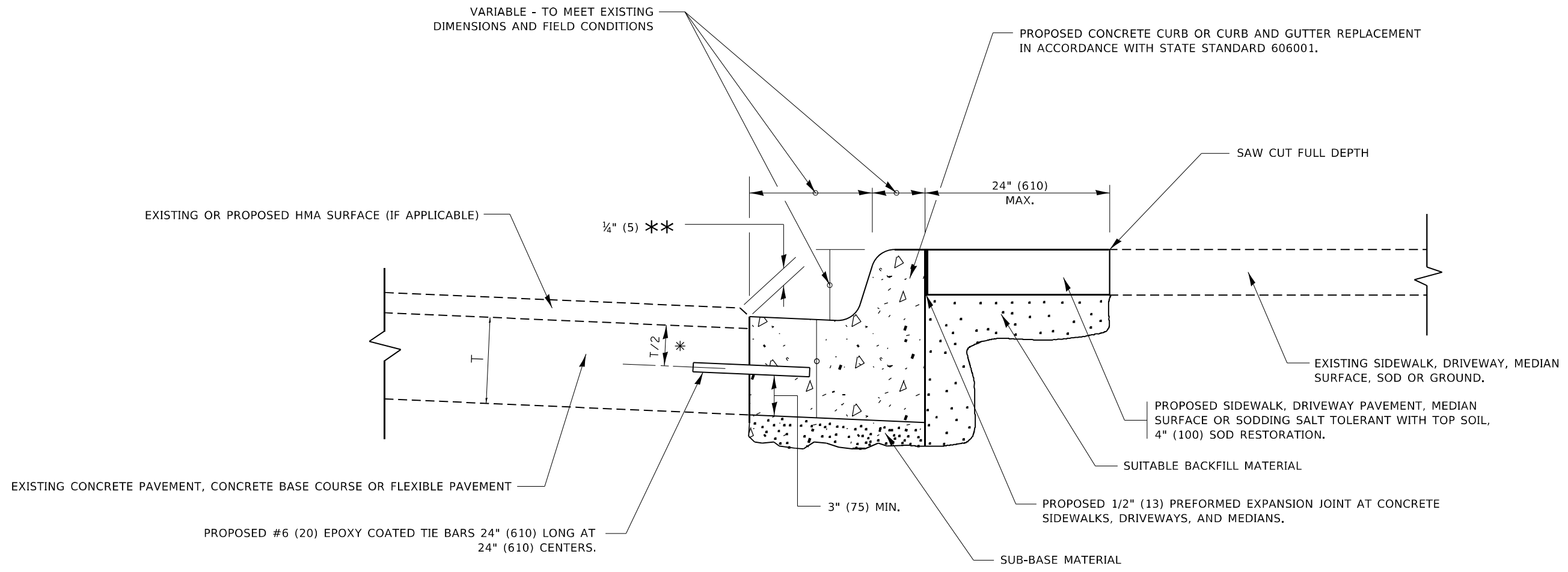
USER NAME = eleyanah	DESIGNED - R. SHAH	REVISED - A. ABBAS 04-27-98
	DRAWN -	REVISED - R. BORO 01-01-07
PLOT SCALE = 100,0000' / in.	CHECKED -	REVISED - R. BORO 09-04-07
PLOT DATE = 12/17/2021	DATE - 10-25-94	REVISED - K. ENG 10-27-08

**STATE OF ILLINOIS
DEPARTMENT OF TRANSPORTATION**

**PAVEMENT PATCHING FOR
HMA SURFACED PAVEMENT**

SCALE: NONE SHEET 1 OF 1 SHEETS STA. TO STA.

F.A.P. RTE.	SECTION	COUNTY	TOTAL SHEETS	SHEET NO.
326	2021-026-R5	KANE	25	15
BD400-04 (BD-22)			CONTRACT NO. 62N60	
ILLINOIS FED. AID PROJECT				



- * 3" (75) MINIMUM FROM TOP AND BOTTOM OF THE CONCRETE PAVEMENT OR BASE COURSE.
- ** IF THE FINAL SURFACE OF THE PAVEMENT IS CONCRETE, THE GUTTER IS TO BE FLUSH WITH THE PAVEMENT.

CURB OR CURB AND GUTTER REMOVAL AND REPLACEMENT

ALL DIMENSIONS ARE IN INCHES (MILLIMETERS) UNLESS OTHERWISE SHOWN.

MODEL: Default
FILE: Mainfile.pxl
Subject: www.bentley.com
Project: I:\Projects\DOT\Office\District 11\Project\11021\CAD\DATA\Design\BdRSt.dgn

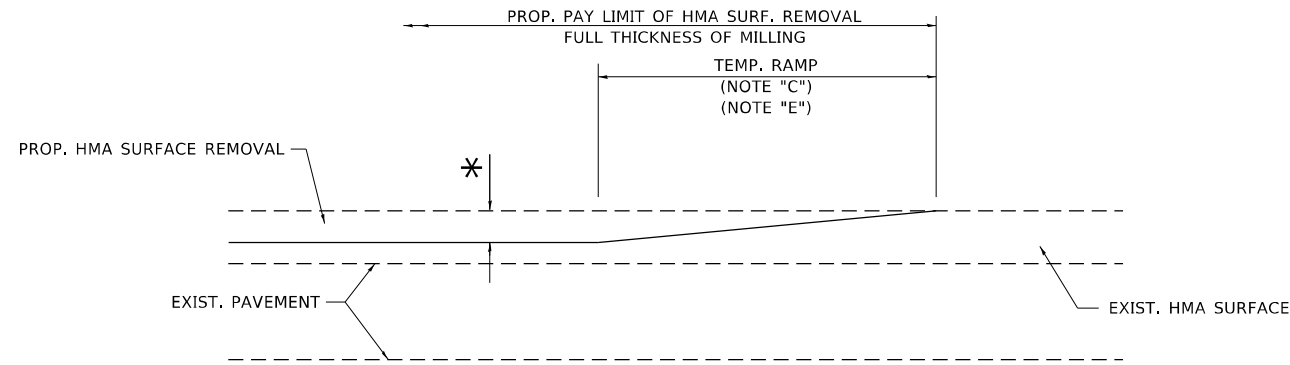
USER NAME = eleyanah	DESIGNED - A. HOUSEH	REVISED - A. ABBAS 03-21-97
	DRAWN -	REVISED - M. GOMEZ 01-22-01
PLOT SCALE = 100,0000 ' / in.	CHECKED -	REVISED - R. BORO 12-15-09
PLOT DATE = 12/17/2021	DATE - 03-11-94	REVISED - K. SMITH 07-11-19

**STATE OF ILLINOIS
DEPARTMENT OF TRANSPORTATION**

**CURB OR CURB AND GUTTER
REMOVAL AND REPLACEMENT**

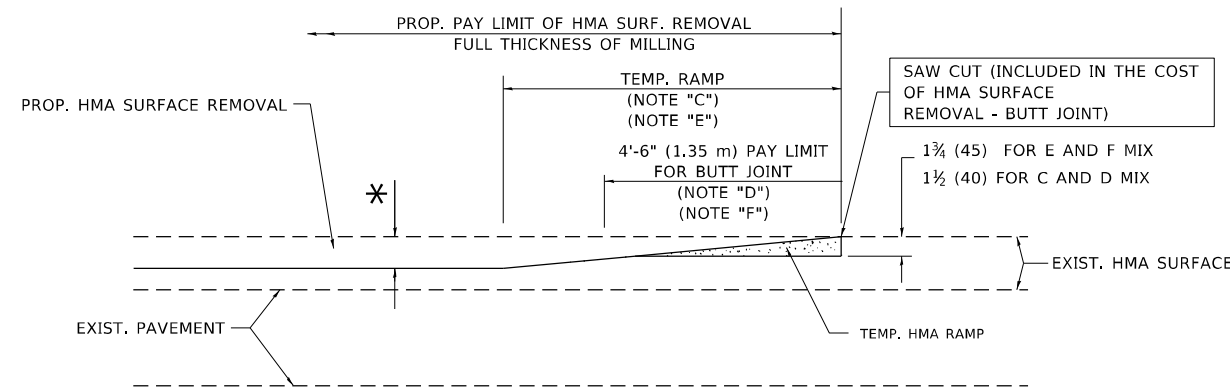
SCALE: NONE SHEET 1 OF 1 SHEETS STA. TO STA.

F.A.P. RTE.	SECTION	COUNTY	TOTAL SHEETS	SHEET NO.
326	2021-026-R5	KANE	25	16
BD600-06 (BD-24)			CONTRACT NO. 62N60	
ILLINOIS FED. AID PROJECT				



MILLED TEMPORARY RAMP
(FOR BUTT JOINT AND HMA TAPER SEE DETAIL BELOW)

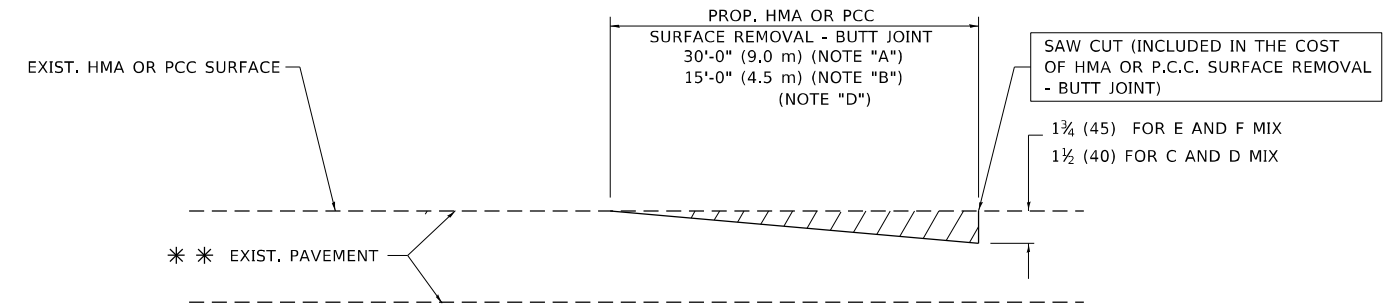
OPTION 1



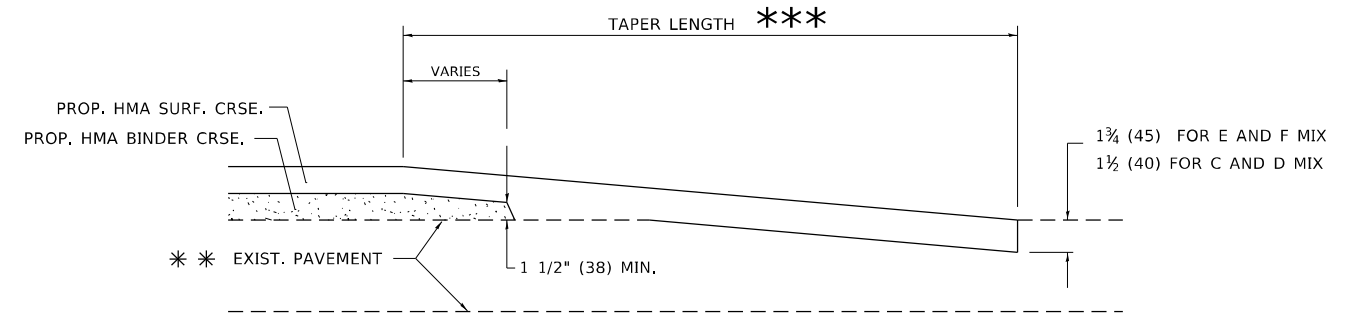
HMA CONSTRUCTED TEMPORARY RAMP
(FOR BUTT JOINT AND HMA TAPER SEE DETAIL BELOW)

OPTION 2

TYPICAL TEMPORARY RAMP



BUTT JOINT DETAIL



HMA TAPER DETAIL

TYPICAL BUTT JOINT AND HMA TAPER FOR RESURFACING ONLY

*** PC CONCRETE, HMA OR HMA RESURFACED PAVEMENT.

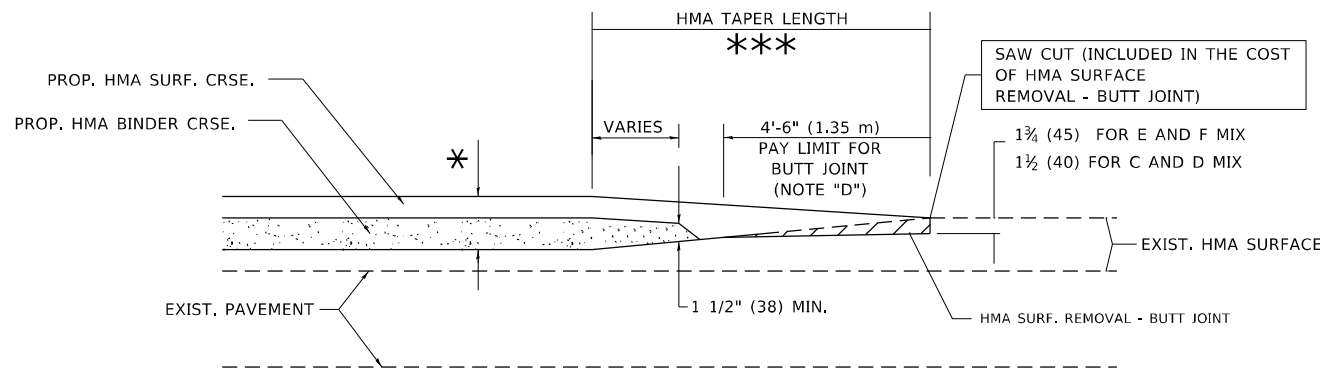
NOTES

- A. MAINLINE ROADWAYS AND MAJOR SIDE ROADS.
- B. MINOR SIDE ROADS.
- C. THE TEMP. RAMP SHALL BE CONSTRUCTED IMMEDIATELY UPON REMOVAL OF THE EXISTING HMA SURFACE.
- D. THE BUTT JOINT SHALL BE CONSTRUCTED IMMEDIATELY PRIOR TO PLACING THE PROPOSED HMA COURSES.
- E. TAPER THE TEMP. RAMP AT A RATE OF 3'-0" (900 mm) PER 1 INCH (25 mm) OF MILLING THICKNESS.
- F. INSTALLATION AND REMOVAL OF THE 4'-6" (1.35 m) TEMP. RAMP IS INCLUDED IN COST OF HMA SURFACE REMOVAL - BUTT JOINT.
* SEE TYPICAL SECTIONS FOR MILLING THICKNESS.
- G. SEE ARTICLE 406.08 AND 406.14 OF THE STANDARD SPECIFICATIONS FOR "HMA AND/OR PCC SURFACE REMOVAL, BUTT JOINT".
*** 20'-0" (6.1 m) PER 1 (25) RESURFACING (NOTE "A")
10'-0" (3.0 m) PER 1 (25) RESURFACING (NOTE "B")

BASIS OF PAYMENT

THE BUTT JOINT WILL BE PAID FOR AT THE CONTRACT UNIT PRICE PER SQUARE YARD (SQUARE METER) FOR "HOT-MIX ASPHALT SURFACE REMOVAL - BUTT JOINT" OR FOR "PORTLAND CEMENT CONCRETE SURFACE REMOVAL - BUTT JOINT".

ALL DIMENSIONS ARE IN INCHES (MILLIMETERS) UNLESS OTHERWISE SHOWN.



BUTT JOINT AND HMA TAPER

TYPICAL BUTT JOINT AND HMA TAPER FOR MILLING AND RESURFACING

MODEL: Default
FILE: hmafe_pav_buttjoint.pwd
PROJECT: I:\Projects\11021\CAD\Drawings\Design\BtJtStd.dgn

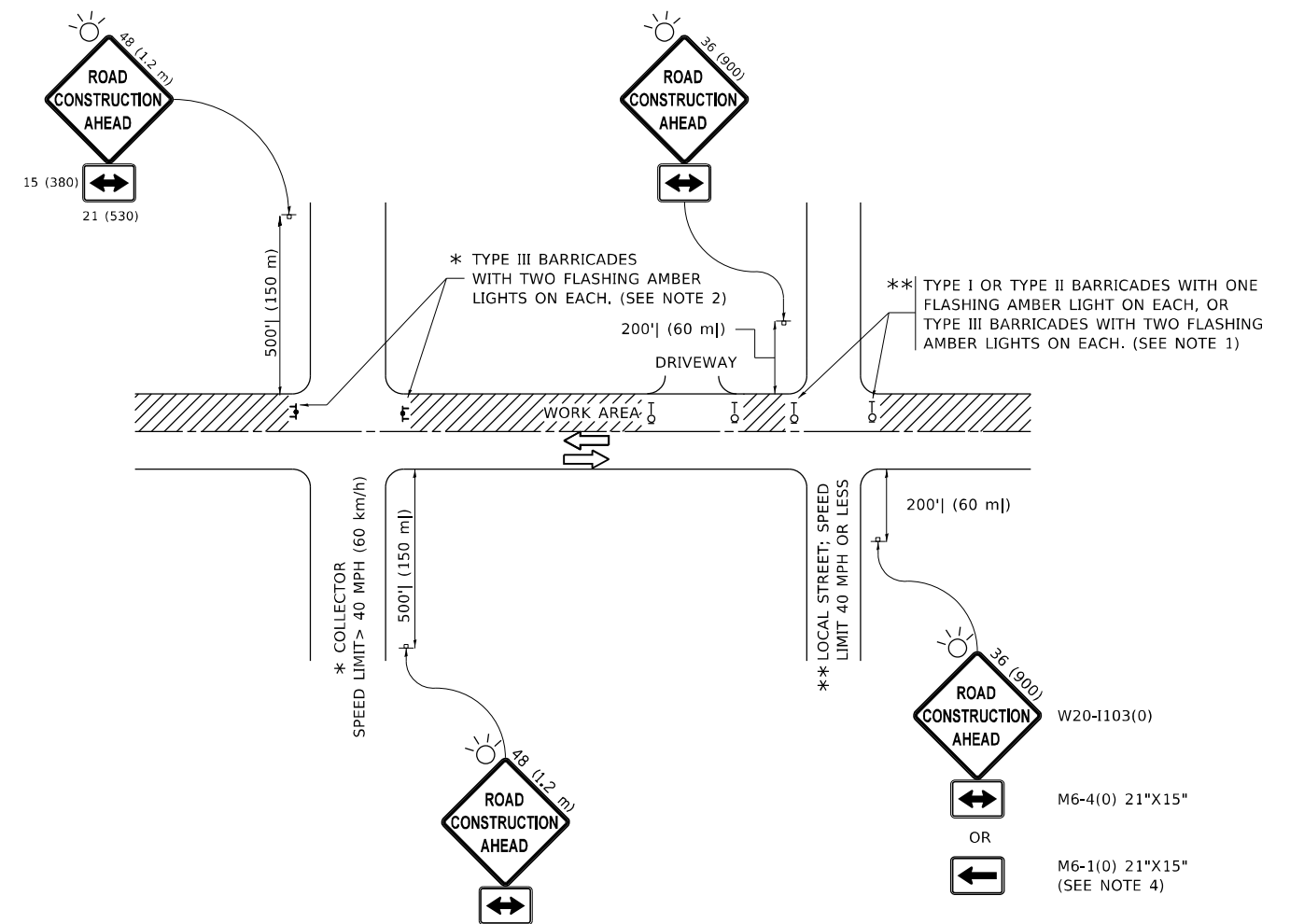
USER NAME = eleyanah	DESIGNED - M. DE YONG	REVISED - R. SHAH 10-25-94
PLOT SCALE = 100,0000' / in.	DRAWN -	REVISED - A. ABBAS 03-21-97
PLOT DATE = 12/17/2021	CHECKED -	REVISED - M. GOMEZ 04-06-01
	DATE - 06-13-90	REVISED - R.BORO 01-01-07

STATE OF ILLINOIS
DEPARTMENT OF TRANSPORTATION

BUTT JOINT AND
HMA TAPER DETAILS

SCALE: NONE SHEET 1 OF 1 SHEETS STA. TO STA.

F.A.P. RTE.	SECTION	COUNTY	TOTAL SHEETS	SHEET NO.
326	2021-026-R5	KANE	25	17
BD400-05 BD32		CONTRACT NO. 62N60		
ILLINOIS FED. AID PROJECT				



NOTES:

1. SIDE ROAD WITH A SPEED LIMIT OF 40 MPH (60 km/h) OR LESS AS SHOWN ON THE DRAWING AND AS DIRECTED BY THE ENGINEER:
 - a) ONE "ROAD CONSTRUCTION AHEAD" SIGN 36 x 36 (900x900) WITH A FLASHER MOUNTED ON IT APPROXIMATELY 200' (60 m) IN ADVANCE OF THE MAIN ROUTE.
 - b) THE CLOSED PORTION OF THE MAIN ROUTE SHALL BE PROTECTED BY BLOCKING WITH TYPE I, TYPE II OR TYPE III BARRICADES, 1/3 OF THE CROSS SECTION OF THE CLOSED PORTION.
2. SIDE ROAD WITH A SPEED LIMIT GREATER THAN 40 MPH (60 km/h) AS SHOWN ON THE DRAWING AND AS DIRECTED BY THE ENGINEER:
 - a) ONE "ROAD CONSTRUCTION AHEAD" SIGN 48 x 48 (1.2 m x 1.2 m) WITH A FLASHER MOUNTED ON IT APPROXIMATELY 500' (150 m) IN ADVANCE OF THE MAIN ROUTE.
 - b) BLOCKING WITH TYPE III BARRICADES, 1/2 OF THE CROSS SECTION OF THE CLOSED PORTION.
3. CONES MAY BE SUBSTITUTED FOR BARRICADES OR DRUMS AT HALF THE SPACING DURING DAY OPERATIONS. CONES SHALL BE A MINIMUM OF 28 (710) IN HEIGHT.
4. SIGNING AND THE WORK ZONE, A SINGLE HEADED ARROW (M6-1) SHALL BE USED IN LIEU OF THE DOUBLE HEADED ARROW (M6-4).
5. WHEN WORK IS BEING PERFORMED ON A SIDE ROAD OR DRIVEWAY, FOLLOW THE APPLICABLE STANDARD(S). THE DIRECTIONAL ARROW (M6-1 OR M6-4) SHALL BE COVERED OR REMOVED WHEN NO LONGER CONSISTENT WITH THE TRAFFIC CONTROL SET-UP.
6. ADVANCE WARNING SIGNS ARE TO BE OMITTED ON DRIVEWAYS UNLESS OTHERWISE SPECIFIED IN THE PLANS OR BY THE ENGINEER.
7. THE TRAFFIC CONTROL AND PROTECTION FOR SIDE ROADS, INTERSECTIONS, AND DRIVEWAYS SHALL BE INCLUDED IN THE COST OF SPECIFIED TRAFFIC CONTROL STANDARDS OR ITEMS.

All dimensions are in inches (millimeters) unless otherwise shown.

MODEL: Default
 FILE NAME: p:\project-new\benefit.com\p\INDOT\Documents\DOT Office\Dir\rdet_1\project\1011021\COB\data\Design\BtStEd.dgn

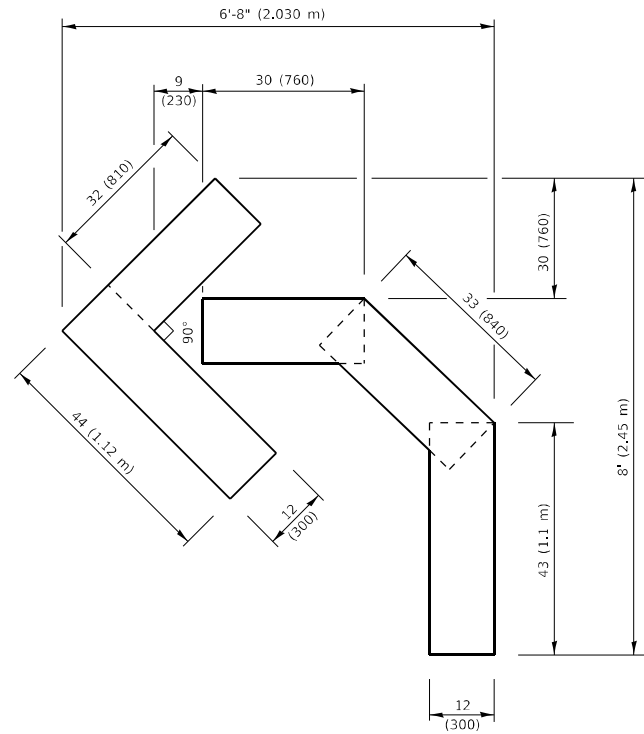
USER NAME = eleyanah	DESIGNED - L.H.A.	REVISED - A. HOUSEH 10-15-96
PLOT SCALE = 100,0000' / in.	CHECKED -	REVISED - T. RAMMACHER 01-06-00
PLOT DATE = 12/17/2021	DATE - 06-89	REVISED - A. SCHUETZE 07-01-13
		REVISED - A. SCHUETZE 09-15-16

**STATE OF ILLINOIS
DEPARTMENT OF TRANSPORTATION**

**TRAFFIC CONTROL AND PROTECTION FOR
SIDE ROADS, INTERSECTIONS, AND DRIVEWAYS**

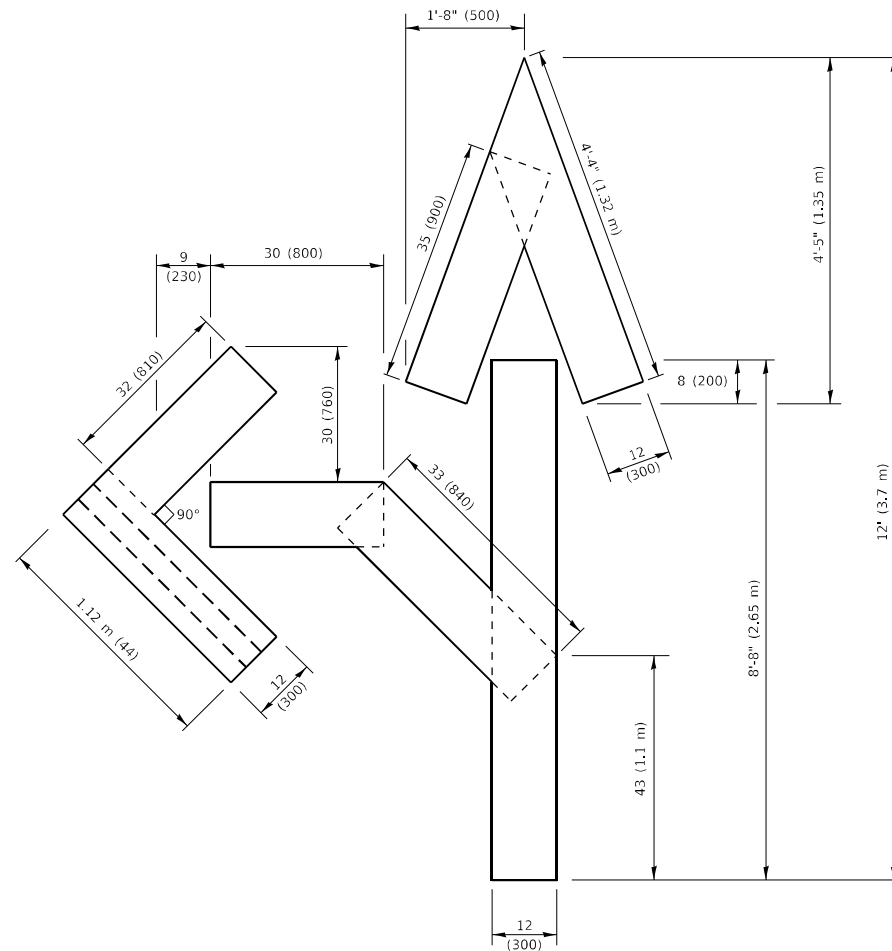
SCALE: NONE SHEET 1 OF 1 SHEETS STA. TO STA.

F.A.P. RTE.	SECTION	COUNTY	TOTAL SHEETS	SHEET NO.
326	2021-026-R5	KANE	25	18
TC-10			CONTRACT NO. 62N60	
ILLINOIS FED. AID PROJECT				



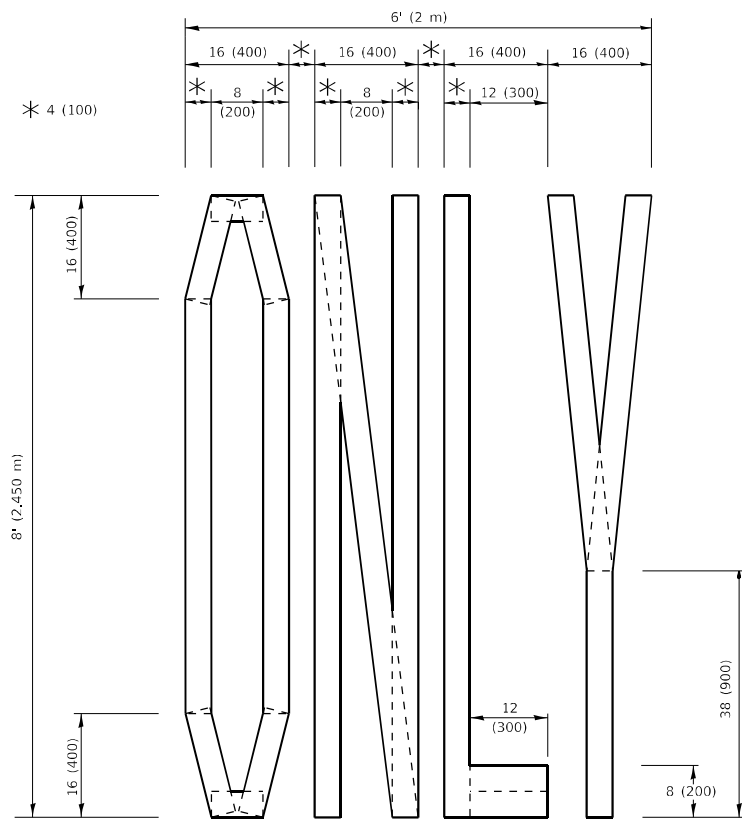
QUANTITY

4 (100) LINE = 45.5 ft. (13.9 m)
15.2 sq. ft. (1.41 sq. m)



QUANTITY

4 (100) LINE = 82.5 ft. (25.1 m)
27.5 sq. ft. (2.53 sq. m)

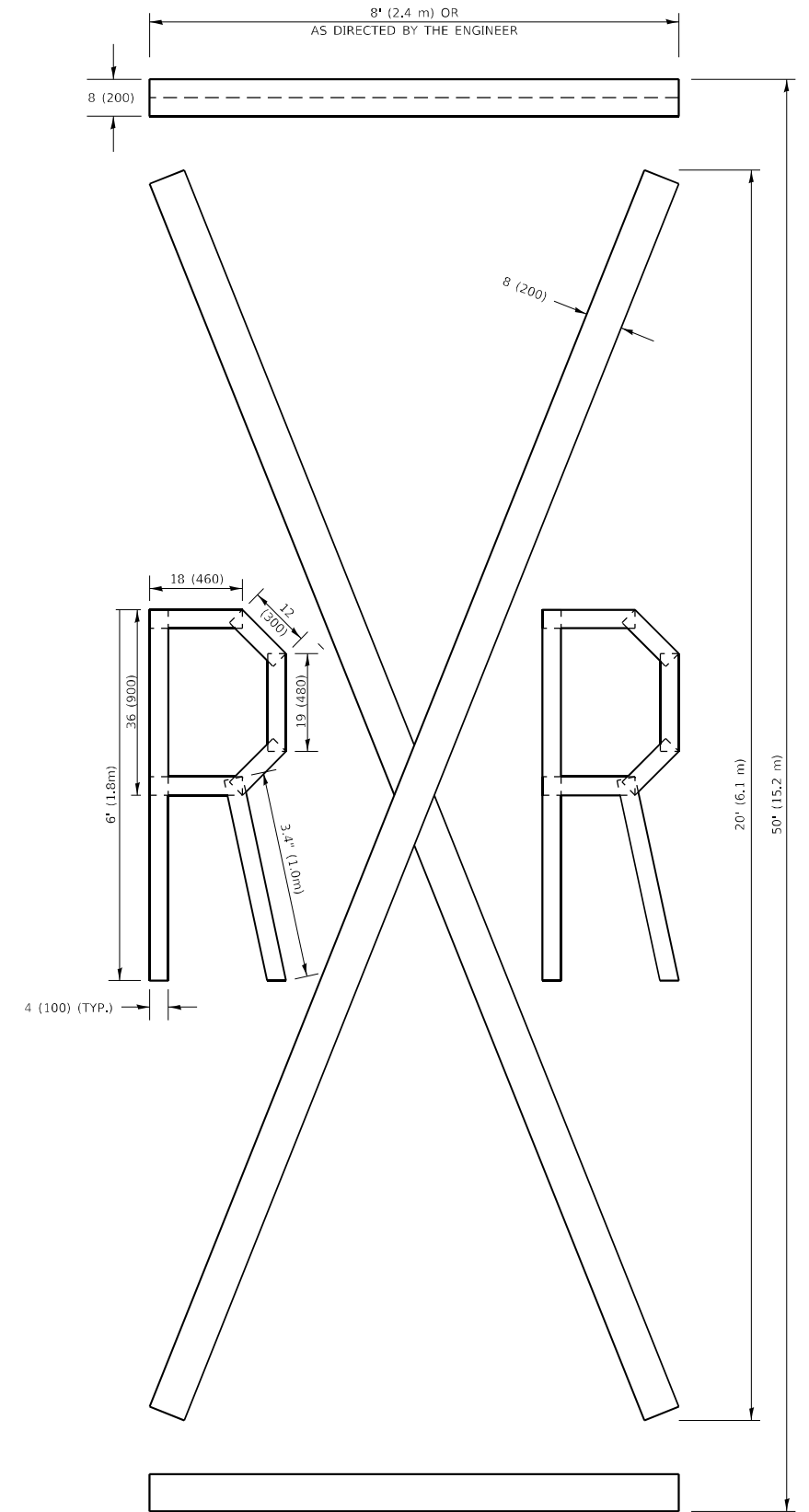


QUANTITY

4 (100) LINE = 64.1 ft. (19.5 m)
21.4 sq. ft. (1.99 sq. m)

NOTE:

ALL QUANTITIES OF PLACEMENT ARE REPRESENTED IN LINEAR FEET OF 4" LINES TO MATCH THE 4" TEMPORARY TAPE PAY ITEM AND REPRESENTS THE TOTAL QUANTITY OF 4" TAPE REQUIRED.



QUANTITY

4 (100) LINE = 225.9 ft. (68.9 m)
75.3 sq. ft. (6.99 sq. m)

All dimensions are in inches (millimeters) unless otherwise shown.

MODEL: Default
FILE: \\nafe.pw.us:public\share\com\pwwd\Documents\DOT_Offices\Bharat_1\Projects\110211\CAD\Drawings\Drawings\BTS\Std.dwg

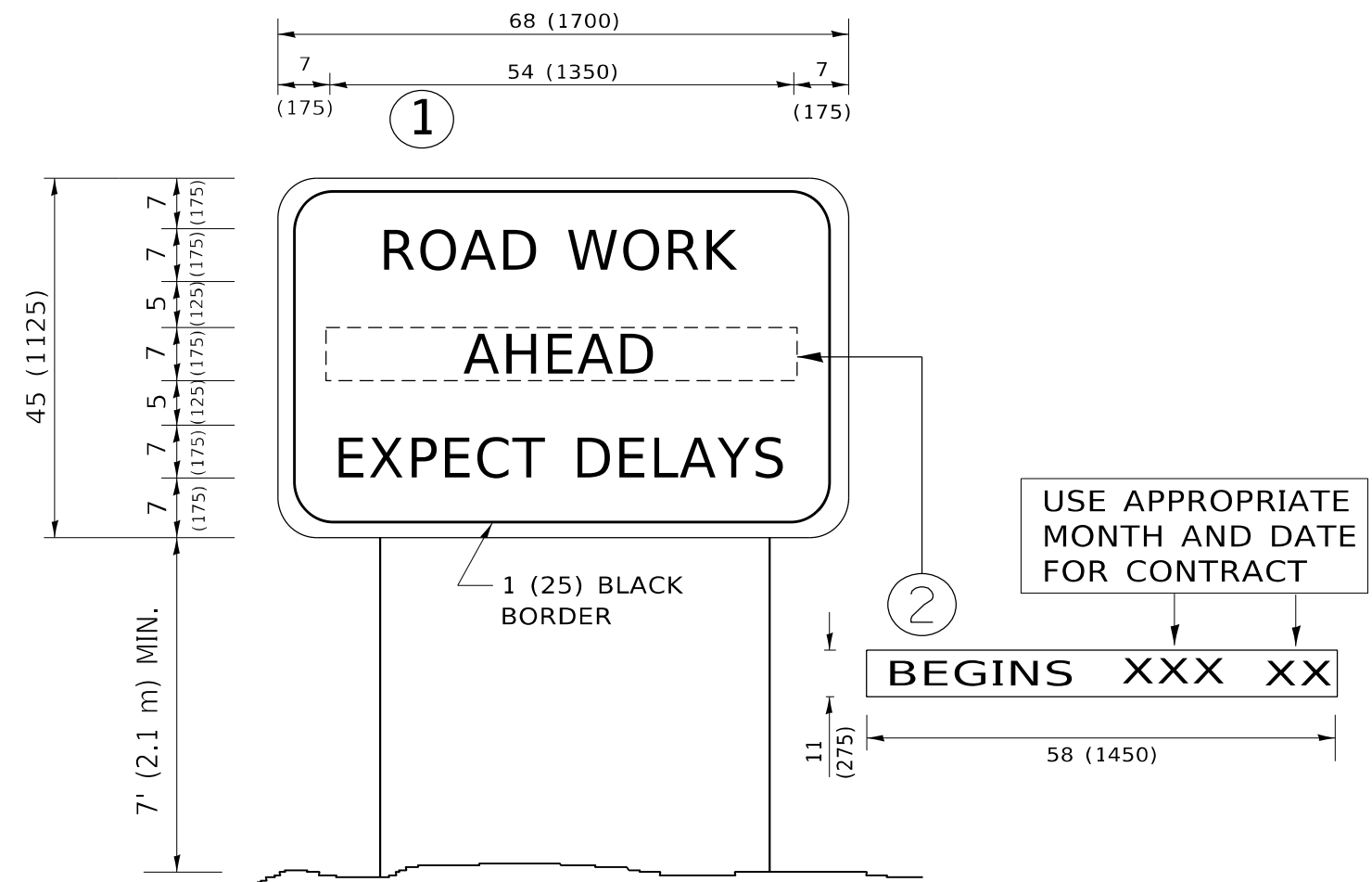
USER NAME = eleyanah	DESIGNED -	REVISED - T. RAMMACHER 03-02-98
	DRAWN -	REVISED - E. GOMEZ 08-28-00
PLOT SCALE = 100,0010' / in.	CHECKED -	REVISED - E. GOMEZ 08-28-00
PLOT DATE = 12/17/2021	DATE - 09-18-94	REVISED - A. SCHUETZE 09-15-16

**STATE OF ILLINOIS
DEPARTMENT OF TRANSPORTATION**

SHORT TERM PAVEMENT MARKING LETTERS AND SYMBOLS

SCALE: NONE SHEET 1 OF 1 SHEETS STA. TO STA.

F.A.P. RTE.	SECTION	COUNTY	TOTAL SHEETS	SHEET NO.
326	2021-026-R5	KANE	25	22
TC-16		CONTRACT NO. 62N60		
ILLINOIS FED. AID PROJECT				



NOTES:

1. USE BLACK LETTERING ON ORANGE BACKGROUND.
2. ERECT SIGNS IN ADVANCE OF THE LOCATION FOR THE "ROAD CONSTRUCTION AHEAD" SIGN AT LOCATIONS AS DIRECTED BY THE ENGINEER.
3. ERECT SIGN ① WITH INSTALLED PANEL ② ONE WEEK PRIOR TO THE START OF CONSTRUCTION.
4. REMOVE PANEL ② SOON AFTER THE START OF CONSTRUCTION.
5. SEE SPECIAL PROVISION FOR "TEMPORARY INFORMATION SIGNING" FOR ADDITIONAL INFORMATION.
6. ONE SIGN ASSEMBLY EQUALS 25.70 SQ. FT. (2.3 SQ. M.)
7. SHALL BE PAID FOR AS TEMPORARY INFORMATION SIGNING.

ALL DIMENSIONS ARE IN INCHES (MILLIMETERS) UNLESS OTHERWISE SHOWN.

MODEL: Default
 FILE: \\na16f-pw-bentley.com\PW\DOT\Documents\DOT Office\Dir\drt_1\Project\11021\COData\Design\BtES.dgn

USER NAME = eleyanah	DESIGNED -	REVISED - R. MIRS 09-15-97
	DRAWN -	REVISED - R. MIRS 12-11-97
PLOT SCALE = 100,0000 ' / in.	CHECKED -	REVISED - T. RAMMACHER 02-02-99
PLOT DATE = 12/17/2021	DATE -	REVISED - C. JUCIUS 01-31-07

STATE OF ILLINOIS
DEPARTMENT OF TRANSPORTATION

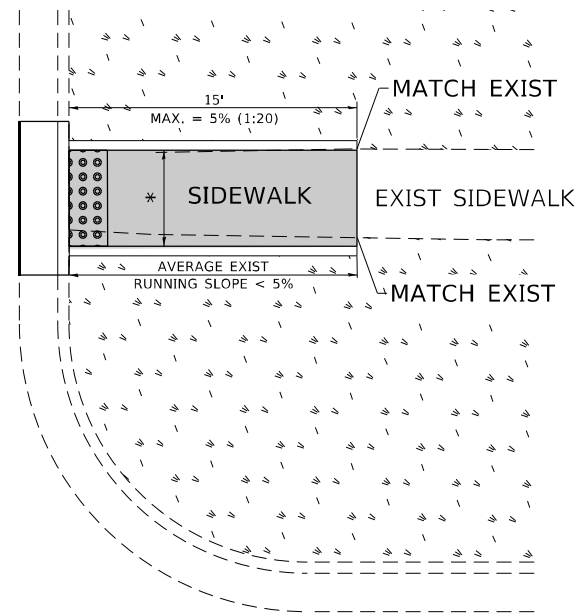
ARTERIAL ROAD
INFORMATION SIGN

SCALE: NONE SHEET 1 OF 1 SHEETS STA. TO STA.

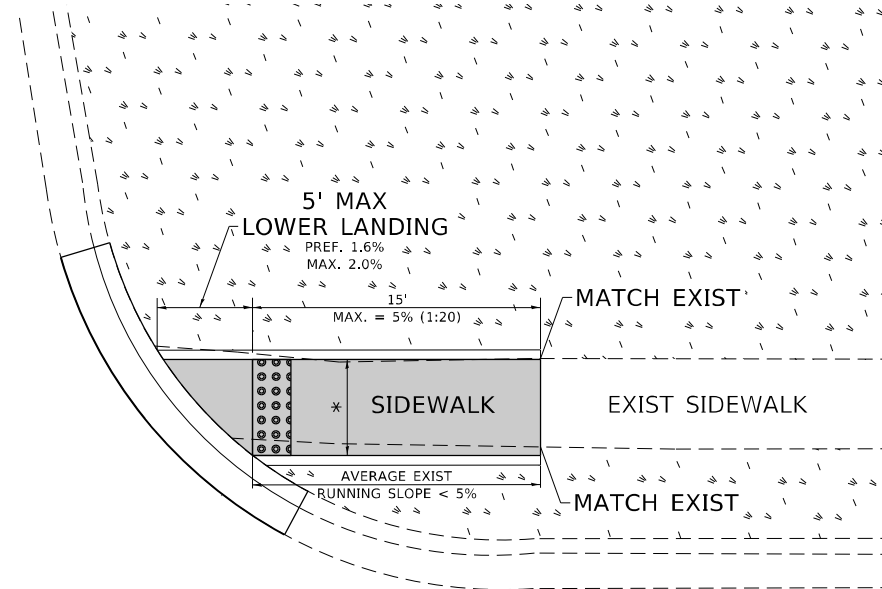
F.A.P. RTE.	SECTION	COUNTY	TOTAL SHEETS	SHEET NO.
326	2021-026-R5	KANE	25	23
TC-22			CONTRACT NO. 62N60	
ILLINOIS FED. AID PROJECT				

ADA DETAIL FOR SINGLE PERPENDICULAR CURB RAMPS W/ EXIST. 5% OR LESS RUN. SLOPE

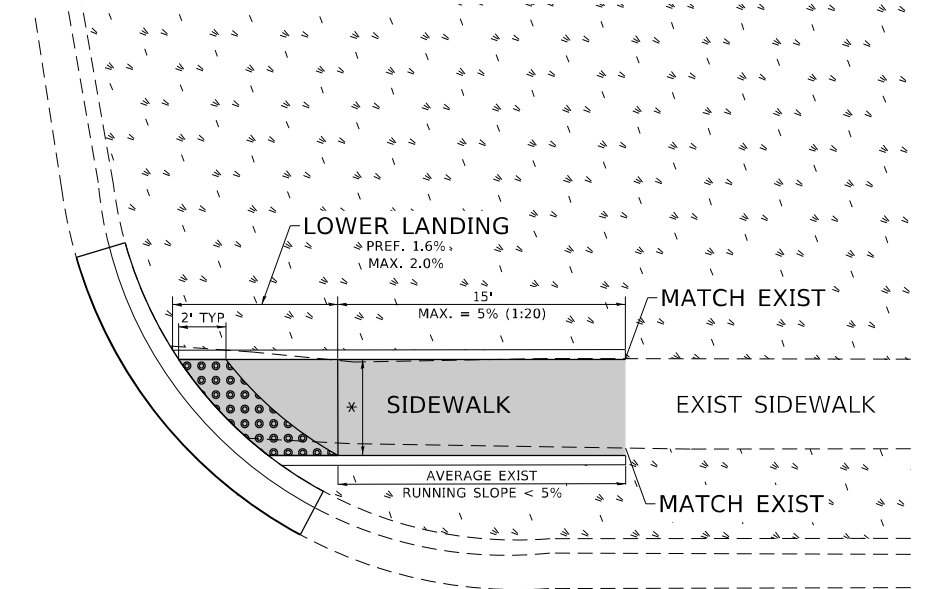
PD-01A



PD-01B



PD-01C



LEGEND

- PROPOSED SIDE CURB
- EXIST. GRASS
- PROPOSED SIDEWALK
- DETECTABLE WARNINGS

CONSTRUCTION NOTES:

- 1) ALL CROSS SLOPES ARE PREFERRED 1.6% (1:64), MAXIMUM 2% (1:50) EXCEPT WHEN TRANSITIONING TO EXISTING SIDEWALK
- * MATCH EXISTING SIDEWALK WIDTH

MODEL: Default
FILE: \\na11e1-pw\uldrac-pw\bea\paw.com\FW\DOT\Documents\DOT Office\District 1\Project\11021\CAD\data\Design\Bkfst.dgn

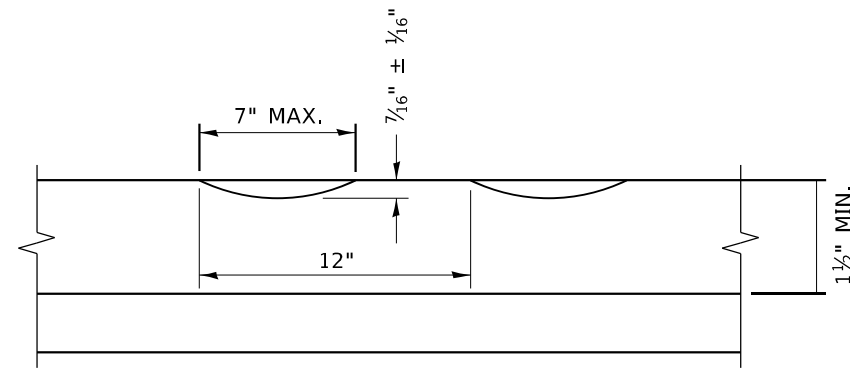
USER NAME = eleyanah	DESIGNED -	REVISED -
	DRAWN - R. LEDEZMA	REVISED -
PLOT SCALE = 100,0000' / in.	CHECKED -	REVISED -
PLOT DATE = 12/17/2021	DATE - 10/02/2019	REVISED -

**STATE OF ILLINOIS
DEPARTMENT OF TRANSPORTATION**

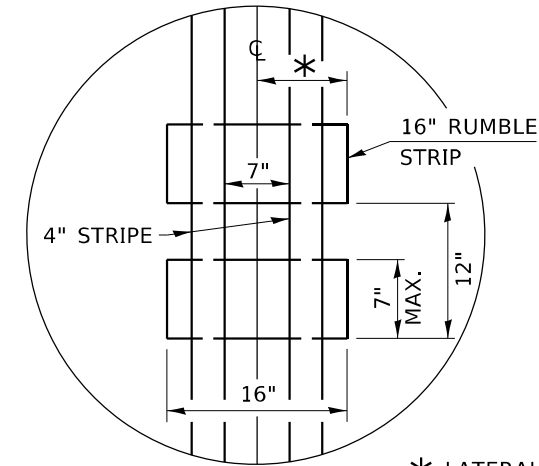
**PROJECT DETAIL FOR SINGLE PERPENDICULAR CURB RAMPS
(PD-01)**

SCALE: NONE SHEET OF SHEETS STA. TO STA.

F.A.P. RTE.	SECTION	COUNTY	TOTAL SHEETS	SHEET NO.
326	2021-026-R5	KANE	25	24
PD-01		CONTRACT NO. 62N60		
ILLINOIS FED. AID PROJECT				



SECTION A-A



* LATERAL DEVIATION SHALL NOT EXCEED ONE INCH IN 100 FEET.

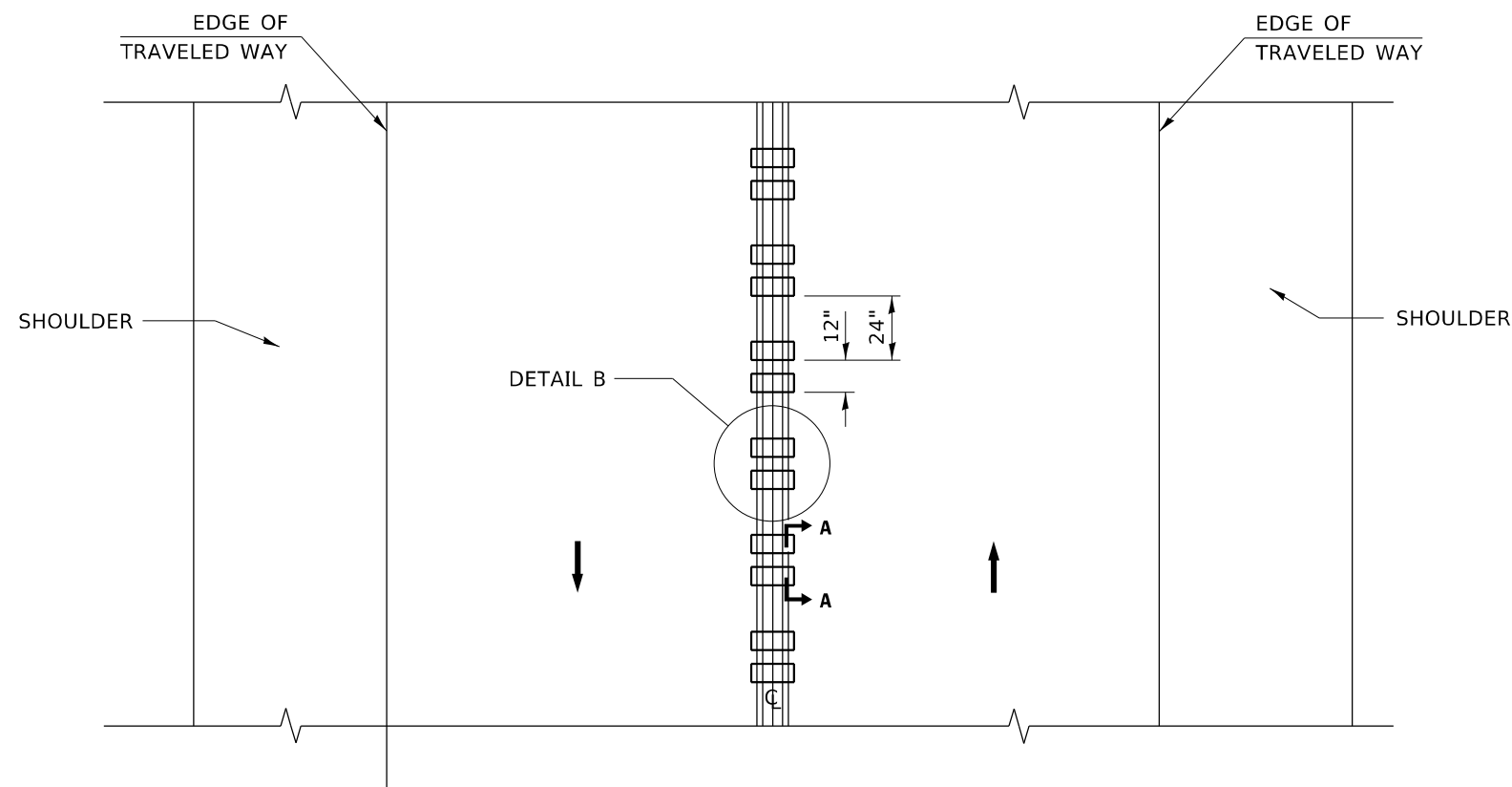
DETAIL B

GENERAL NOTES

- CENTERLINE RUMBLE STRIPS SHALL BE CONSTRUCTED ACCORDING TO SECTION 642 ALONG THE CENTERLINE OF PAVEMENT.
- SEE STANDARD 780001 FOR OTHER STRIPING LAYOUTS.
- RUMBLE STRIPS SHALL NOT BE PLACED ON BRIDGES.
- ALL RUMBLE STRIPS SHALL BE MILLED.
- CENTERLINE RUMBLE STRIPS SHALL BE CONTINUOUS THROUGH CONNECTIONS OF SIDEROADS WITH NO LEFT TURN LANES.
- DISCONTINUE CENTERLINE RUMBLE STRIPS THROUGH THE LIMITS OF ALL LEFT TURN LANES, INCLUDING ANY LANE TAPER SECTIONS.
- AFTER RUMBLE STRIPS ARE INSTALLED, THE PAVEMENT SURFACE SHALL BE SWEEPED CLEAN PRIOR TO THE PLACEMENT OF THE NEW PAVEMENT MARKINGS.
- WHERE USED, ADJUST SPACING OF RAISED REFLECTIVE PAVEMENT MARKERS TO FALL IN WIDER GAP BETWEEN RUMBLE STRIPS.

BASIS OF PAYMENT

- THIS WORK WILL BE PAID FOR AT THE CONTRACT UNIT PRICE PER FOOT FOR CENTERLINE-RUMBLE STRIP OF THE WIDTH SPECIFIED.
- HOT-SPRAY THERMOPLASTIC PAVEMENT MARKING WILL BE USED OVER THE RUMBLE STRIPS, AND WILL BE PAID FOR SEPARATELY.



TWO-WAY ROAD

MODEL: Default
 FILE NAME: p:\bullet\paw_benefly.com\PIV\DOT\Documents\DOT Office\Bridget - I\Project\11021\CAD\data\Design\BdfStr.dgn

USER NAME = eleyanah	DESIGNED - R. BORO	REVISED -
	DRAWN -	REVISED -
PLOT SCALE = 100,0000' / in.	CHECKED -	REVISED -
PLOT DATE = 12/17/2021	DATE - 08-06-2012	REVISED -

**STATE OF ILLINOIS
DEPARTMENT OF TRANSPORTATION**

RUMBLE STRIPS FOR CENTERLINE, NON-FREEWAY

SCALE: NONE SHEET 1 OF 1 SHEETS STA. TO STA.

F.A.P. RTE.	SECTION	COUNTY	TOTAL SHEETS	SHEET NO.
326	2021-026-R5	KANE	25	25
BD 55			CONTRACT NO. 62N60	
ILLINOIS FED. AID PROJECT				