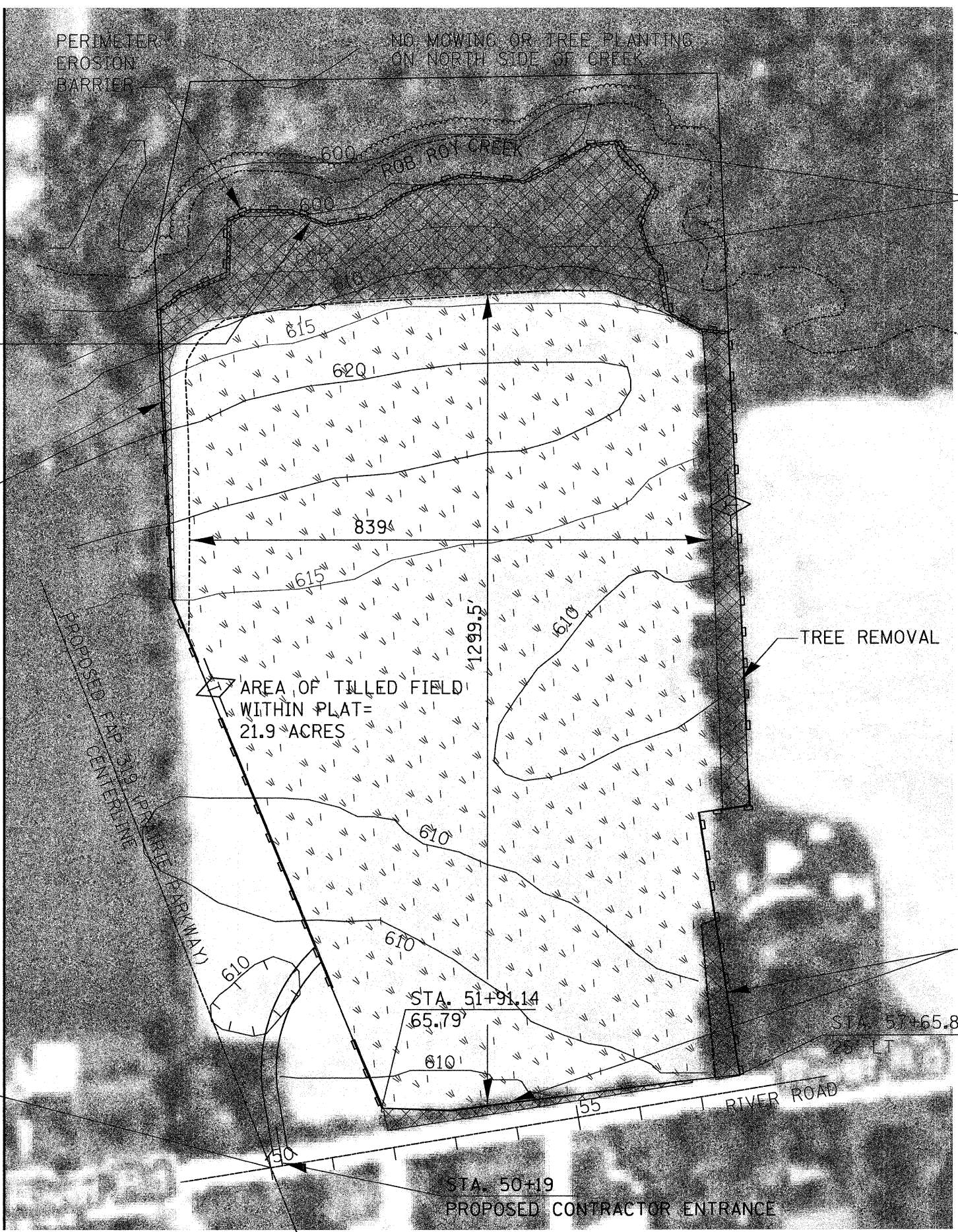


NO MOWING OR PLANTING
WITHIN 25' TO 100' OF CREEK.
EXACT LIMITS TO BE
DETERMINED BY ENGINEER

TREE REMOVAL

STA. 3269+99.88 FAP 319
(PROPOSED)=
STA. 50+00 RIVER ROAD

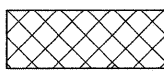
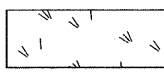
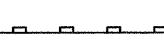
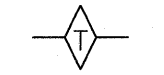
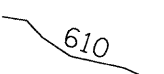


NO MOWING OR TREE PLANTING
ON NORTH SIDE OF CREEK

TREE SPECIES SUITABLE
FOR PLANTING IN AREA OF
POTENTIAL FLOODING ARE:

PAW PAW
SWAMP WHITE OAK
HACKBERRY

LEGEND

-  TREE REMOVAL, ACRES
-  SEEDING, CLASS 2, SPECIAL AND MULCH METHOD 2
-  PERIMETER EROSION BARRIER
-  TEMPORARY DITCH CHECK
-  CONTOUR LINE

TREE REMOVAL

TREE REMOVAL

NOTE:
GRADING, SHAPING, AND CLEARING
TO MAKE CONTRACTOR ENTRANCE IS
INCIDENTAL TO AGGREGATE FOR
TEMPORARY ACCESS

FILE NAME =	USER NAME = schwenkerg	DESIGNED -	REVISED -	STATE OF ILLINOIS DEPARTMENT OF TRANSPORTATION	PLAN VIEW			F.A.P. RTE. =	SECTION	COUNTY	TOTAL SHEETS	SHEET NO.
ct:\pw_work\pwidot\schwenkerg\02234950\066A66-sht-details.DGN		DRAWN -	REVISED -		319	(47-3I)	KENDALL	8	7			
PLOT SCALE = 100.0000' / IN.		CHECKED -	REVISED -		CONTRACT NO. 66A66							
PLOT DATE = Oct 29, 2010 11:04:41 AM		DATE -	REVISED -		SCALE:	SHEET NO.	OF SHEETS	STA.	TO STA.	ILLINOIS FED. AID PROJECT		