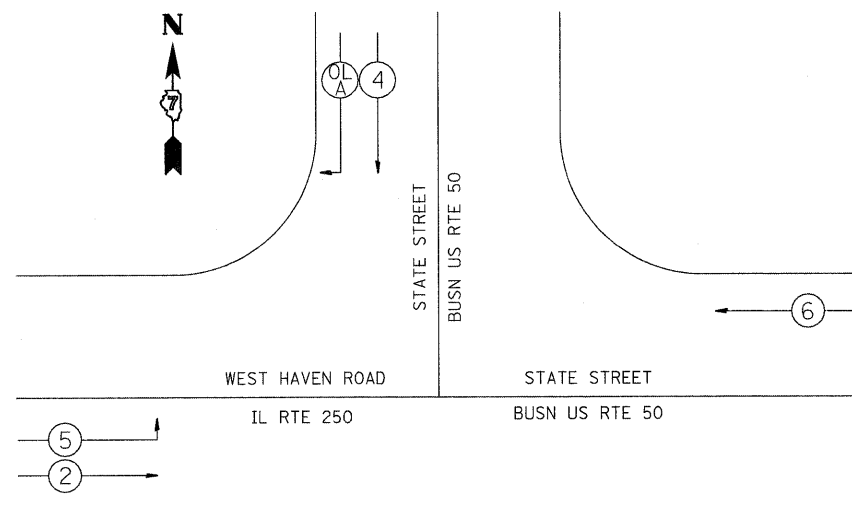


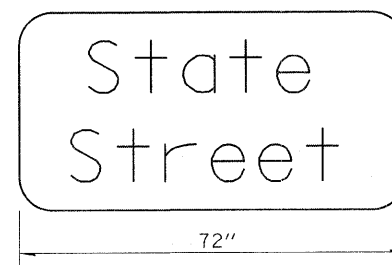
DETAIL OF MAST ARM FOUNDATION
BOLT PATTERN



VEHICULAR PHASE NO. X

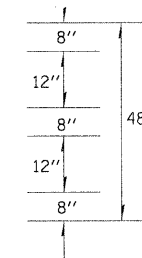


PHASE DESIGNATION DIAGRAM

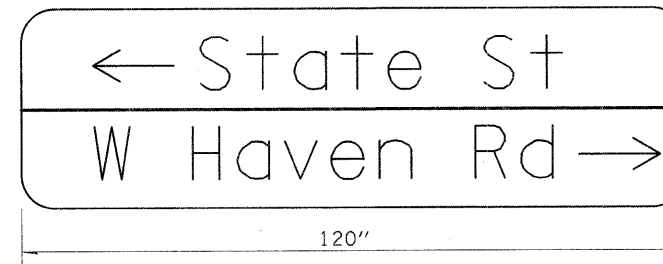


TO BE INSTALLED ON EASTBOUND MAST ARM (STA 7+59 25' L+.)
TO BE INSTALLED ON WESTBOUND MAST ARM (STA 9+44 39' Rt.)

SIGN PANEL DETAILS

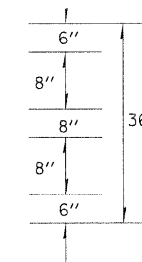


1. SIGN SHALL HAVE A WHITE REFLECTORIZED LEGEND AND BORDER ON A GREEN REFLECTORIZED BACKGROUND.
2. UPPER/LOWER CASE LETTERS, 5W CLEARVIEW FONT.



TO BE INSTALLED ON SOUTHBOUND MAST ARM (STA 8+75 27' L+.)

SIGN PANEL DETAILS



1. SIGN SHALL HAVE A WHITE REFLECTORIZED LEGEND AND BORDER ON A GREEN REFLECTORIZED BACKGROUND.
2. UPPER/LOWER CASE LETTERS, 5W CLEARVIEW FONT.

FILE NAME =	USER NAME = mclellonla	DESIGNED -	REVISED -	STATE OF ILLINOIS DEPARTMENT OF TRANSPORTATION	DETAILS & STREET SIGNS			F.A.S. RTE.	SECTION	COUNTY	TOTAL SHEETS	SHEET NO.
ct:\pw\work\pwwidot\mclellonla\d0196565\074488-TS-shd.dgn		DRAWN -	REVISED -		1809	(22)TS-1	LAWRENCE	12	4			
PLOT SCALE = 20.0000' / IN.		CHECKED -	REVISED -		CONTRACT NO. 74480			ILLINOIS FED. AID PROJECT				
PLOT DATE = 12/28/2010		DATE -	REVISED -		SCALE:	SHEET NO.	OF SHEETS	STA.	TO STA.			