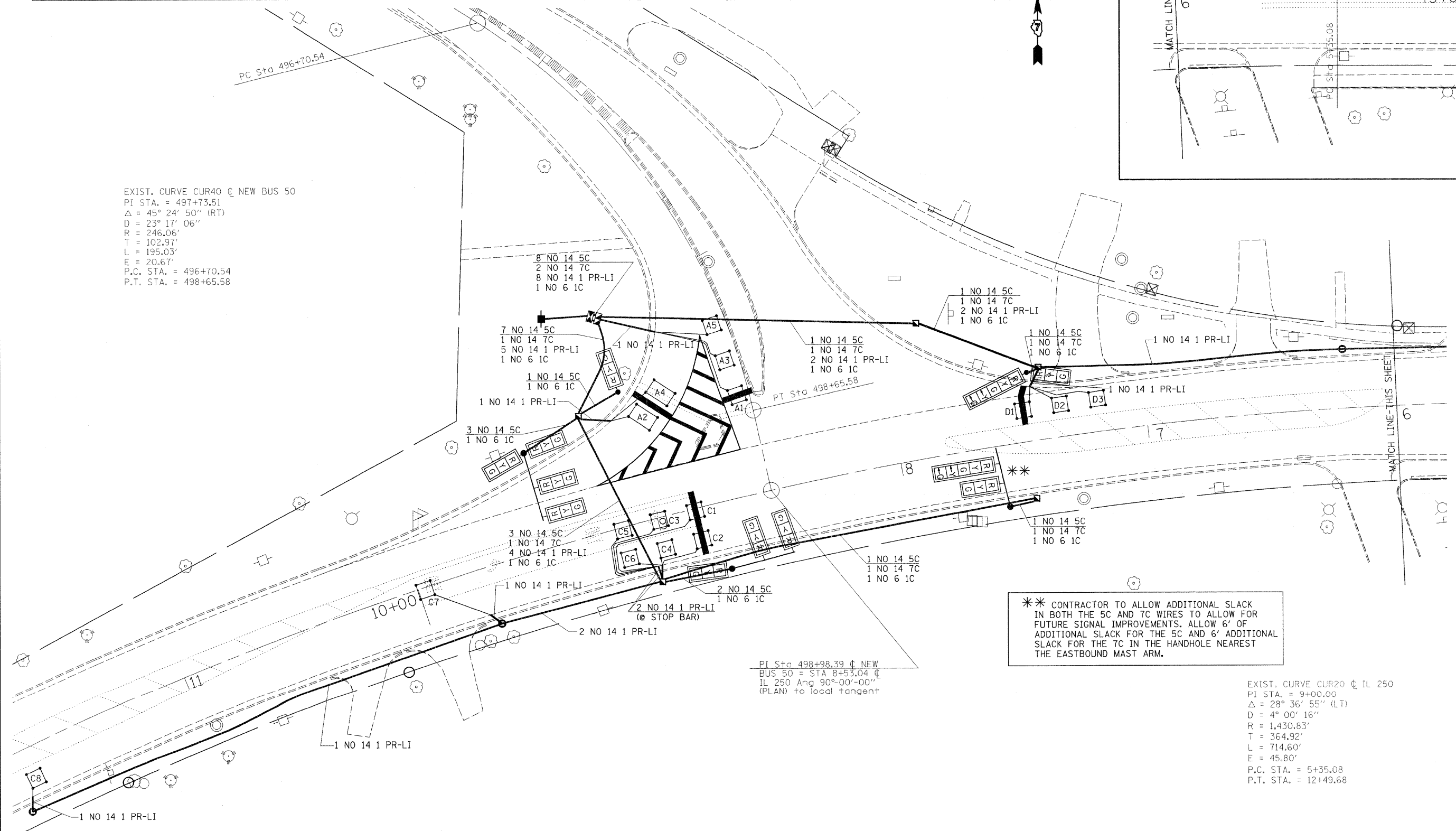
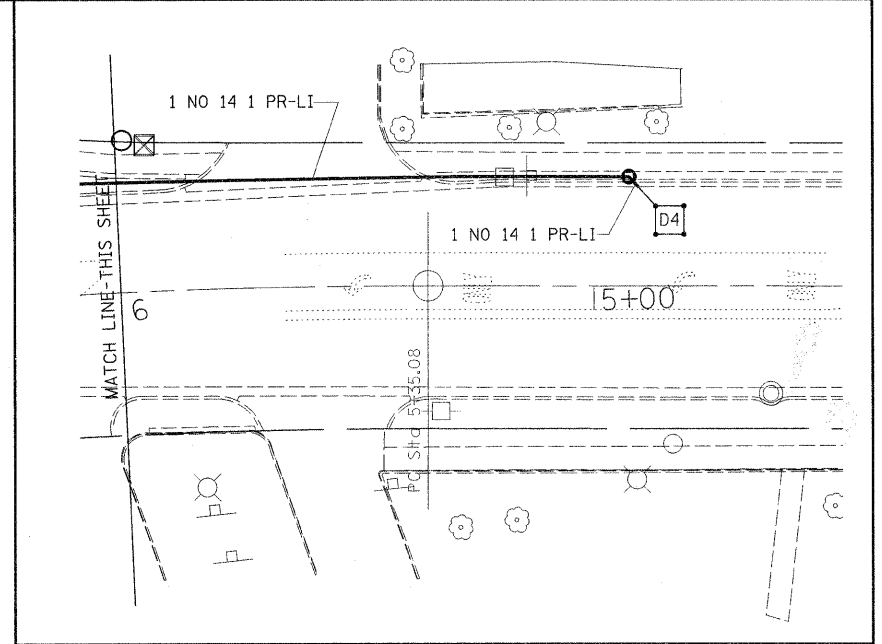


LOOP:	SIZE:	MODE:	QUADRA-POLE:	DELAY:
A1,A3,A5, C1,C3,C5,C2,C4,C6, D1,D2,D3	6' X 6'	NORMAL	NO	0
C7,C8,D4	6' X 6'	EXTENDED	NO	0
A2,A4	6' X 10'	DELAY	NO	15

THE FOLLOWING CABLES SHALL BE WIRED TO COMMON AMPLIFIERS:  
 (A1, A3, A5), (A2, A4),  
 (C1, C3, C5), (C2, C4, C6),  
 (C7), (C8)  
 (D1, D2, D3), (D4),  
 8 AMPLIFIERS PLUS 2 ADDITIONAL  
 TOTAL 10 AMPLIFIERS

EXIST. CURVE CUR40 @ NEW BUS 50  
 PI STA. = 497+73.51  
 $\Delta = 45^\circ 24' 50''$  (RT)  
 $D = 23^\circ 17' 06''$   
 $R = 246.06'$   
 $T = 102.97'$   
 $L = 195.03'$   
 $E = 20.67'$   
 P.C. STA. = 496+70.54  
 P.T. STA. = 498+65.58



PI Sta 498+98.39 @ NEW  
 BUS 50 = STA 8+53.04 @  
 IL 250 Ang 90°-00'-00''  
 (PLAN) to local tangent

\*\* CONTRACTOR TO ALLOW ADDITIONAL SLACK  
 IN BOTH THE 5C AND 7C WIRES TO ALLOW FOR  
 FUTURE SIGNAL IMPROVEMENTS. ALLOW 6' OF  
 ADDITIONAL SLACK FOR THE 5C AND 6' ADDITIONAL  
 SLACK FOR THE 7C IN THE HANDHOLE NEAREST  
 THE EASTBOUND MAST ARM.

EXIST. CURVE CUR20 @ IL 250  
 PI STA. = 9+00.00  
 $\Delta = 28^\circ 36' 55''$  (LT)  
 $D = 4^\circ 00' 16''$   
 $R = 1,430.83'$   
 $T = 364.92'$   
 $L = 714.60'$   
 $E = 45.80'$   
 P.C. STA. = 5+35.08  
 P.T. STA. = 12+49.68

FILE NAME =	USER NAME = mclellanla	DESIGNED -	REVISED -	<b>STATE OF ILLINOIS DEPARTMENT OF TRANSPORTATION</b>	<b>INTERSECTION-BSN RTE 50 &amp; IL 250 CABLE LAYOUT</b>	F.A.S. RTE.	SECTION	COUNTY	TOTAL SHEETS	SHEET NO.	
or\pwork\pwork\mclellanla\0196565\0774480-TS-sht.dgn	PLOT SCALE = 20.0000" / IN.	DRAWN -	REVISED -			1809	(2)ZTS-1	LAWRENCE	12	7	
PLOT DATE = 12/30/2010	DATE -	CHECKED -	REVISED -			CONTRACT NO. 74480					
		DATE -	REVISED -			ILLINOIS FED. AID PROJECT					
				SCALE:	SHEET NO. OF SHEETS	STA.	TO STA.				