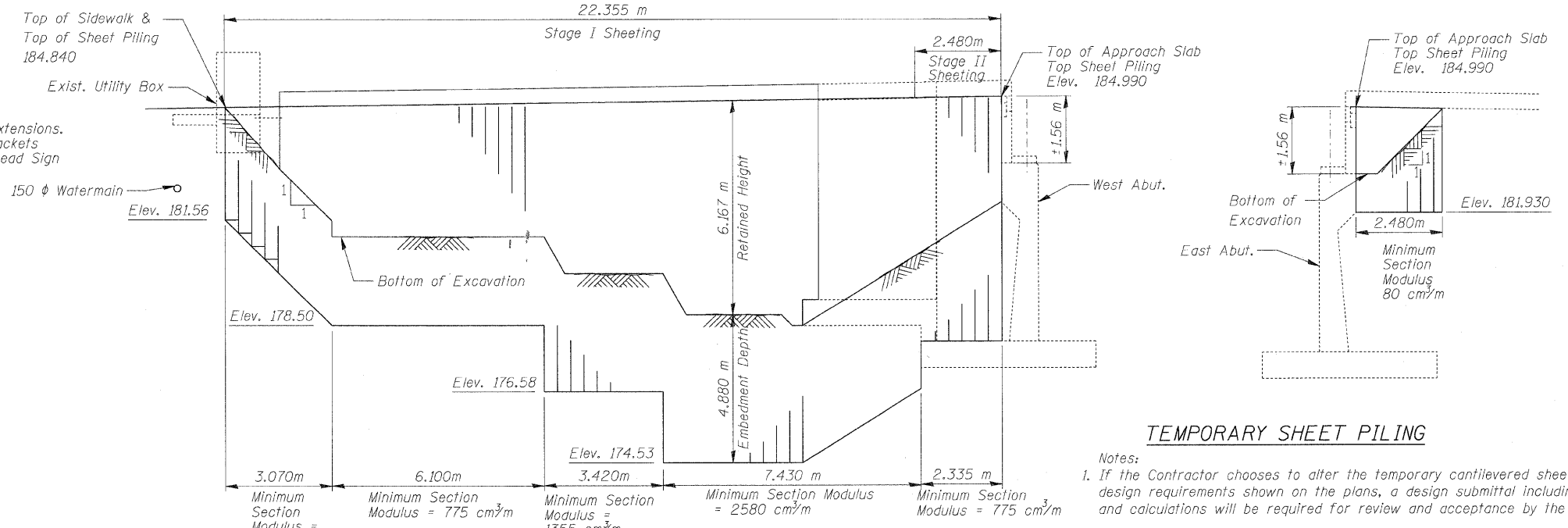


STATE OF ILLINOIS  
DEPARTMENT OF TRANSPORTATION

**GENERAL NOTES:**

- Fasteners shall be AASHTO M164M Type 1, mechanical galvanized bolts. Bolts 20 mm  $\phi$ , holes 22mm  $\phi$  unless otherwise noted.
- Calculated weight of Structural Steel = 1,040 kg (M 270M Grade 250) Bearing Extensions. Calculated weight of Structural Steel = 510 kg (M 270M Grade 25) Extension Brackets for sign structure. Cost included with Remove, Ground Mount and Re-erect Overhead Sign Structure - Bridge Mounted.
- No field welding is permitted except as specified in the contract documents.
- Reinforcement bars shall conform to the requirements of AASHTO M 31M, M 42M or M 53M Grade 400 (IL Modified). See Special Provisions.
- Reinforcement bars designated (E) shall be epoxy coated.
- Prior to pouring the new concrete deck, all heavy or loose rust, loose mill scale, and other loose or potentially detrimental foreign material shall be removed from the surfaces in contact with concrete. Tightly adhered paint may remain unless otherwise noted. Removal shall be accomplished by methods that will not damage the steel and the cost will be included in the pay item covering removal of the existing concrete. As directed by the Engineer, existing construction accessories welded to the top flange of beams and girders shall be removed. The weld areas shall be ground flush and inspected for cracks using magnetic particle testing (MT) or dye penetrant testing (PT) by qualified personnel approved by the Engineer. Any cracks that cannot be removed by grinding 6mm deep shall be identified and reported to the Bureau of Bridges and Structures for further disposition. The cost of removing welded accessories, grinding and inspecting weld areas and grinding cracks will be paid for according to Article 109.04 of the Standard Specifications.
- Plan dimensions and details relative to existing plans are subject to nominal construction variations. The Contractor shall field verify existing dimensions and details affecting new construction and make necessary approved adjustments prior to construction or ordering of materials. Such variations shall not be cause for additional compensation for a change in scope of the work, however, the Contractor will be paid for the quantity actually furnished at the unit price bid for the work.
- Concrete Sealer shall be applied to the designated areas of the abutments.
- Existing structural steel shall only be cleaned and painted as required by Special Provision "Cleaning and Painting Contact Areas of Existing Steel Structures". For cleaning and painting at the Extension Brackets for sign structure the cost shall be included with Remove, Ground Mount and Re-erect Overhead Sign Structure - Bridge Mounted.
- Cleaning and field painting of structural steel shall be done under a separate painting contract.
- The existing structural steel coating contains lead. The Contractor shall take appropriate precautions to deal with the presence of lead on this project.
- The structural steel plates of the Elastomeric Bearing Assembly shall conform to the requirements of AASHTO M 270M Grade 345.
- Two 3 mm adjusting shims shall be provided for each bearing in addition to all other plates or shims and placed as shown on bearing details.
- All dimensions are in millimeters (mm) except as noted.
- The existing bridge railing and the existing protective shield shall be salvaged and delivered to the IDOT District Bridge Maintenance Yard. The yard is located at 1101 Biesterfeld Road, Elk Grove Village, IL 60007, 847-956-1444 (48 hour notification is required). The cost of removal and delivery of the existing bridge railing shall be included in the pay item "Removal of Existing Concrete Deck". The cost of removing and delivery of the existing protective shield shall be included in pay item "Removal of Existing Concrete Deck".
- Slip forming of parapets is not allowed.



**TEMPORARY SHEET PILING**

- Notes:
- If the Contractor chooses to alter the temporary cantilevered sheet piling design requirements shown on the plans, a design submittal including plan details and calculations will be required for review and acceptance by the Engineer.
  - The Contractor shall connect the first sheet to the existing abutment wall to ensure stability of sheets driven to the top of the existing footing. This connection shall be reviewed and accepted by the Engineer and included in the cost of Temporary Sheet Piling.

**TOTAL BILL OF MATERIAL**

ITEM	UNIT	QUANTITY
Removal of Existing Concrete Deck	Each	1
Stud Shear Connectors	Each	180
Jack and Remove Existing Bearings	Each	12
Bar Splicers	Each	756
Name Plates	Each	1
Elastomeric Bearing Assembly, Type I	Each	12
Porous Granular Embankment, Special	Cu. m	77
Concrete Removal	Cu. m	62.5
Protective Shield	Sq. m	726
Structure Excavation	Cu. m	324
Concrete Structures	Cu. m	80.8
Concrete Superstructure	Cu. m	276.1
Bridge Deck Grooving	Sq. m	456
Protective Coat	Sq. m	893
Furnishing and Erecting Structural Steel	kg	1,040
Reinforcement Bars, Epoxy Coated	kg	38,190
Bridge Fence Railing	Meter	135
Temporary Sheet Piling	Sq. m	182
Preformed Joint Strip Seal	Meter	24.1
Concrete Sealer	Sq. m	46
Epoxy Crack Injection	Meter	4.0
Geocomposite Wall Drain	Sq. m	48
Pipe Underdrains for Structures 100 mm	Meter	17
Structural Repair of Concrete (Depth Equal to or less than 125 mm)	Sq. m	38.1
Drainage Scuppers, DS-11	Each	4
Drainage System	L Sum	1
Anchor Bolts, M30	Each	24

\* See Special Provisions

**INDEX OF SHEETS**

- General Plan
- General Notes & Bill of Material
- Construction Stages
- Temporary Concrete Barrier
- Top of Slab Elevation I
- Top of Slab Elevations II
- West Approach Elevations
- East Approach Elevations
- Superstructure
- Superstructure Details
- Bridge Fence Railing Parapet Mounted
- Preformed Joint Strip Seal
- Drainage Scupper, DS-11
- Existing Framing Plan
- Existing Girder Elevation & Details
- Elastomeric Bearing Assembly Type I
- West Abutment & SW Retaining Wall Removal
- East Abutment Removal
- West and East Abutment Details
- Pier Repairs
- Abutment Repairs
- Retaining Walls Repairs
- Retaining Walls Plan and Details
- South-West Retaining Wall Elevation
- South-West Retaining Wall Plan & Sections
- Bar Splicer Assembly Details

**GENERAL NOTES & BILL OF MATERIAL  
STRUCTURE NO. 016-2034**

DESIGNED - EKM
CHECKED - SCD
DRAWN - RD
CHECKED - EKM

**Ciorba Group, Inc.**  
CONSULTING ENGINEERS  
5507 North Cumberland Avenue, Suite 402 Chicago, Illinois 60656  
Tel. 773.775.4009 Fax 773.775.4014 Email chicago@ciorba.com

SHEET NO. S-2	F.A.I. RTE.	SECTION	COUNTY	TOTAL SHEETS	SHEET NO.
S-26 SHEETS	57	1818.3B-R	COOK	58	26
CONTRACT NO. 60862					
FED. ROAD DIST. NO. ILLINOIS FED. AID PROJECT					

1/15/2009 rdv:lej mt:\pro\_0\153\12\plan\_design\structure\lead\3153-02-F5-02.DGN