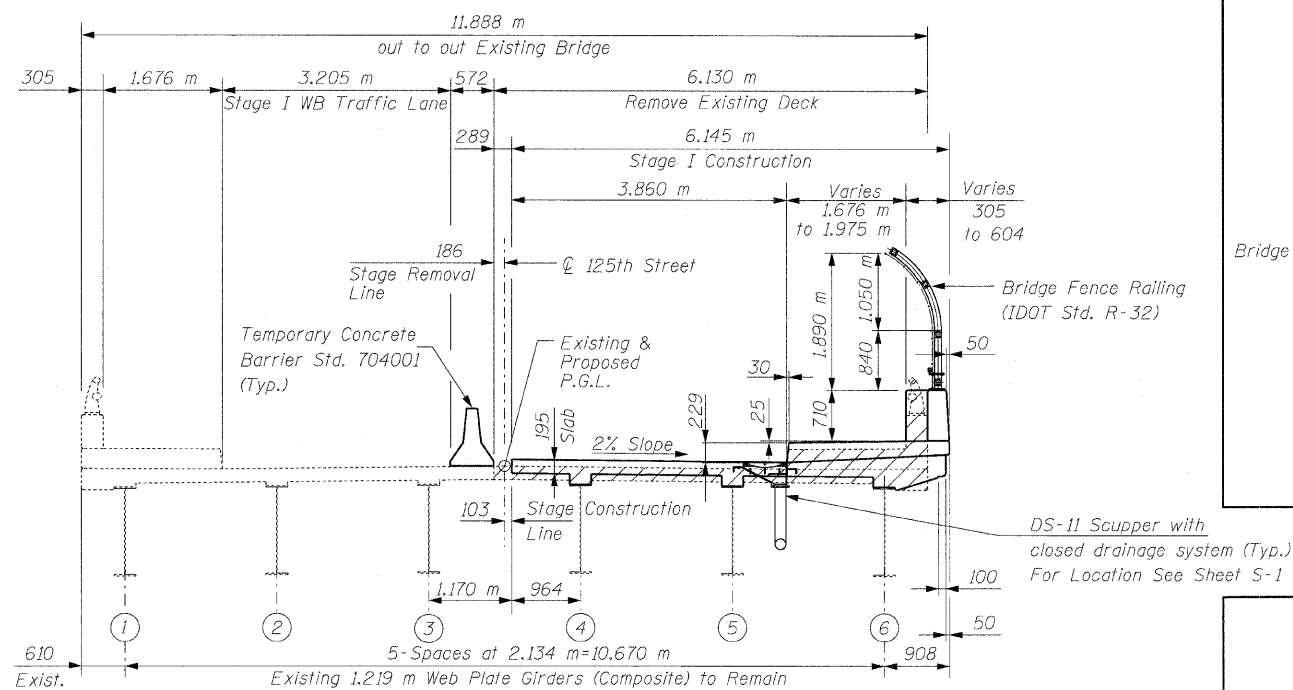
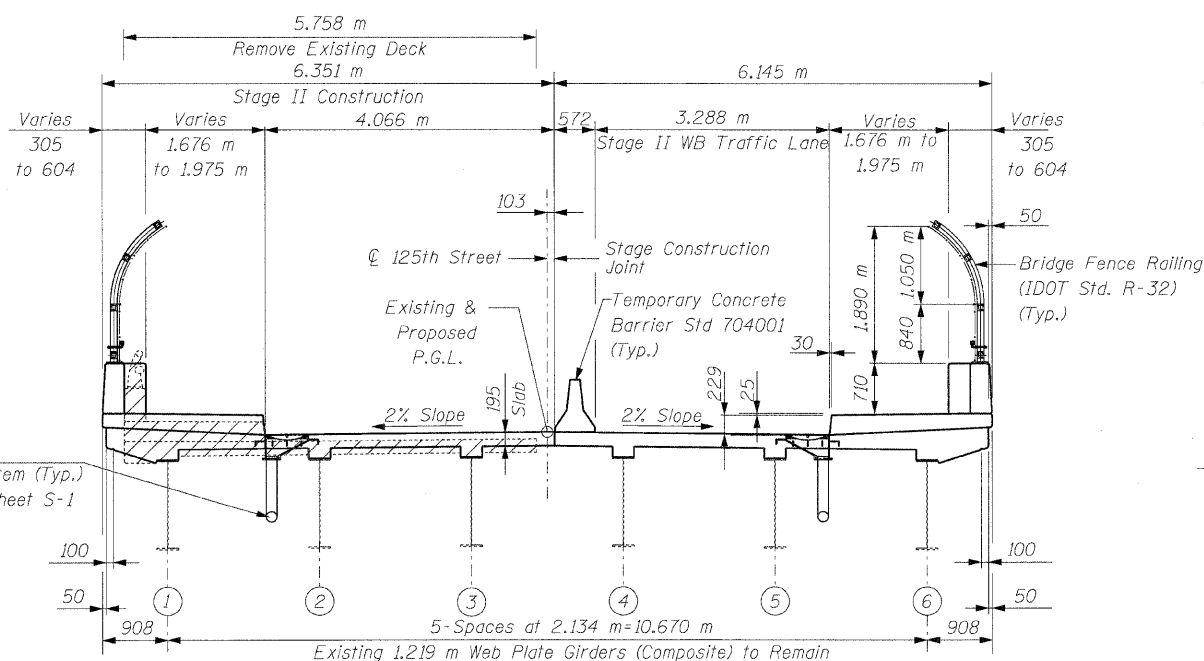


STATE OF ILLINOIS  
DEPARTMENT OF TRANSPORTATION



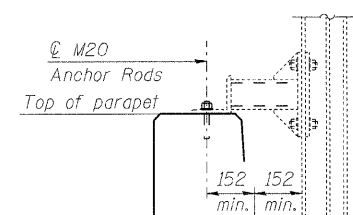
CONSTRUCTION STAGE I  
(Looking East)



CONSTRUCTION STAGE II  
(Looking East)

NOTES:

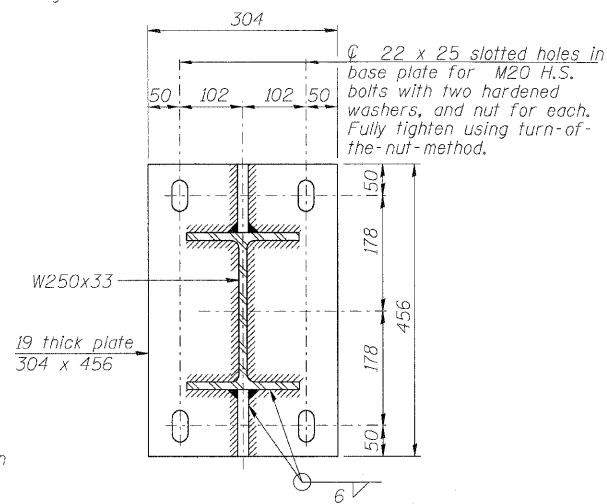
- The Contractor shall mark the top surface of the existing deck to identify the location and limits of the top flanges of the girders prior to the commencement of deck removal operation. When a girder is damaged by deck removal operations, it is the contractor's responsibility to repair the damage at his/her own expense.
- The cost of Aluminum Railing Removal is included with Removal of Existing Concrete Deck.
- Loosen or remove cross frame between beams 3 and 4 during deck removal. After entire deck has been poured reinstall cross frames, Cost included with Removal of Existing Concrete Deck.



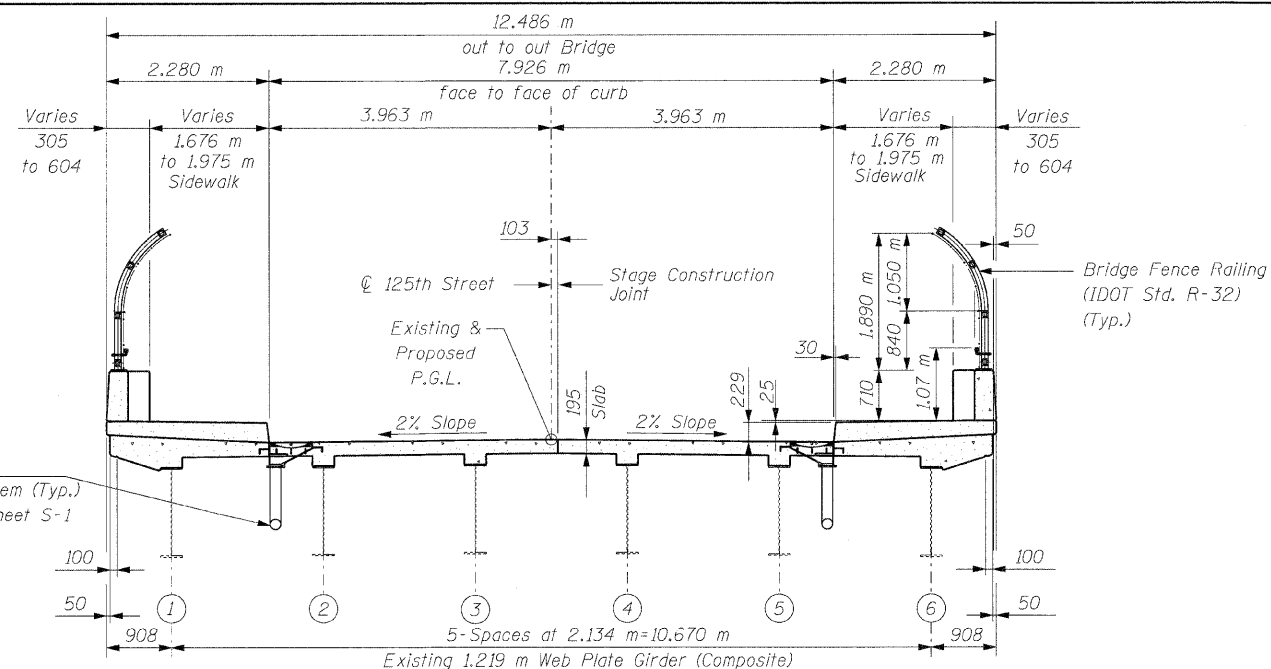
SIGN STRUCTURE MOUNTING DETAIL

EXTENSION BRACKET NOTES

- Typical at each support bracket (9 thus)
- All plates and shapes shall be Hot Dip Galvanized after fabrication in accordance with AASHTO M111M.
- Painting is not permitted.
- Any design modifications shall be based on the current version of applicable specifications and submitted for the Engineer's approval. All Structural Steel
- Plates and Shapes shall conform to AASHTO M270M, Gr. 250, Gr. 350
- All bolts, washers, nuts and locknuts shall satisfy the requirements of AASHTO M164M (A325), ASTM A449M.
- All fasteners shall be hot dip galvanized per AASHTO M232M.
- Cost included with Remove, Ground Mount and Re-erect Overhead Sign Structure - Bridge Mounted.



SECTION D-D



FINAL CROSS SECTION  
(Looking East)

CONSTRUCTION STAGES  
STRUCTURE NO. 016-2034

SHEET NO. S-3	F.A.I. RTE.	SECTION	COUNTY	TOTAL SHEETS	SHEET NO.
	57	1818.3B-R	COOK	58	27
S-26 SHEETS		CONTRACT NO. 60862			
FED. ROAD DIST. NO.		ILLINOIS		FED. AID PROJECT	

DESIGNED - EKM
CHECKED - SCD
DRAWN - RD
CHECKED - EKM

**Giorba Group, Inc.**  
CONSULTING ENGINEERS  
5507 North Cumberland Avenue, Suite 402 Chicago, Illinois 60656  
Tel. 773.775.4009 Fax 773.775.4014 Email chicago@giorba.com

rdonley

1/15/2004

m:\p\3153\125 sh\des\sign\structure\1\cead\3153-02-FS-05.dgn