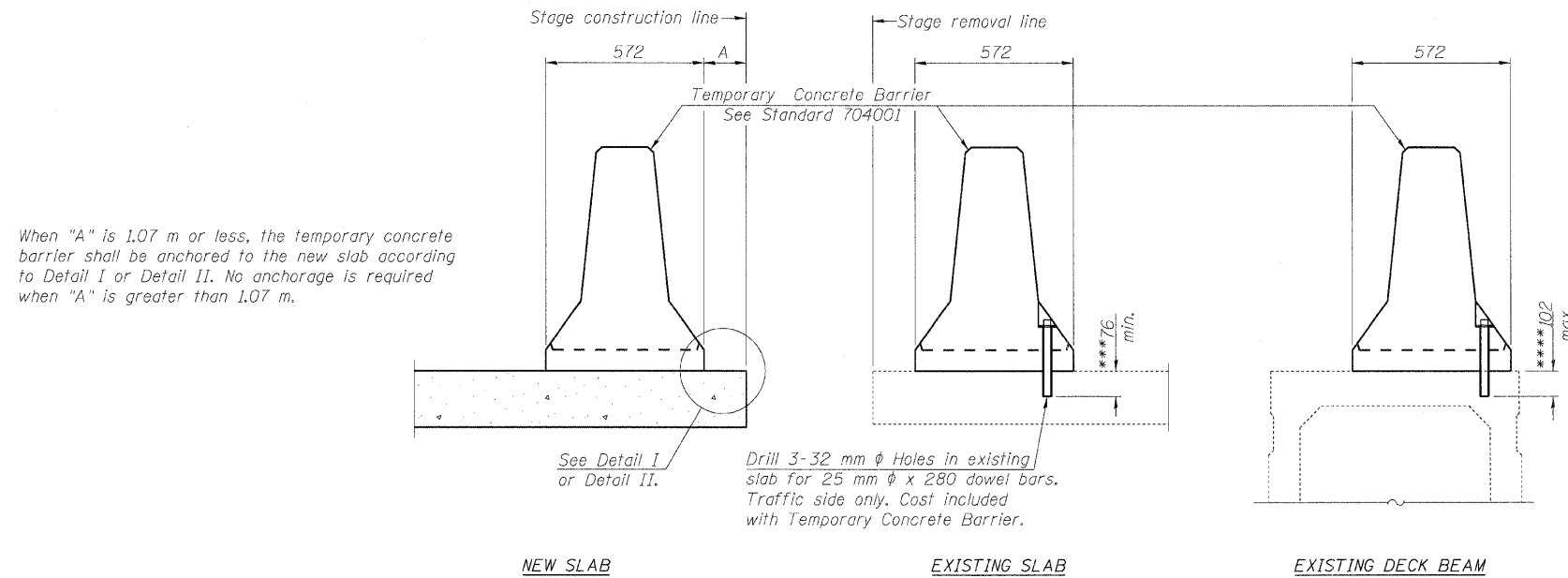


STATE OF ILLINOIS  
DEPARTMENT OF TRANSPORTATION



NEW SLAB                      EXISTING SLAB                      EXISTING DECK BEAM

SECTIONS THRU SLAB OR DECK BEAM

NOTES

Detail I - With Bar Splicer or Couplers:  
Connect one (1) 25 x 178 x 254 steel  $\bar{R}$  to the top layer of couplers with 2- 16 mm  $\phi$  bolts screwed to coupler at approximate  $\bar{C}$  of each barrier panel.

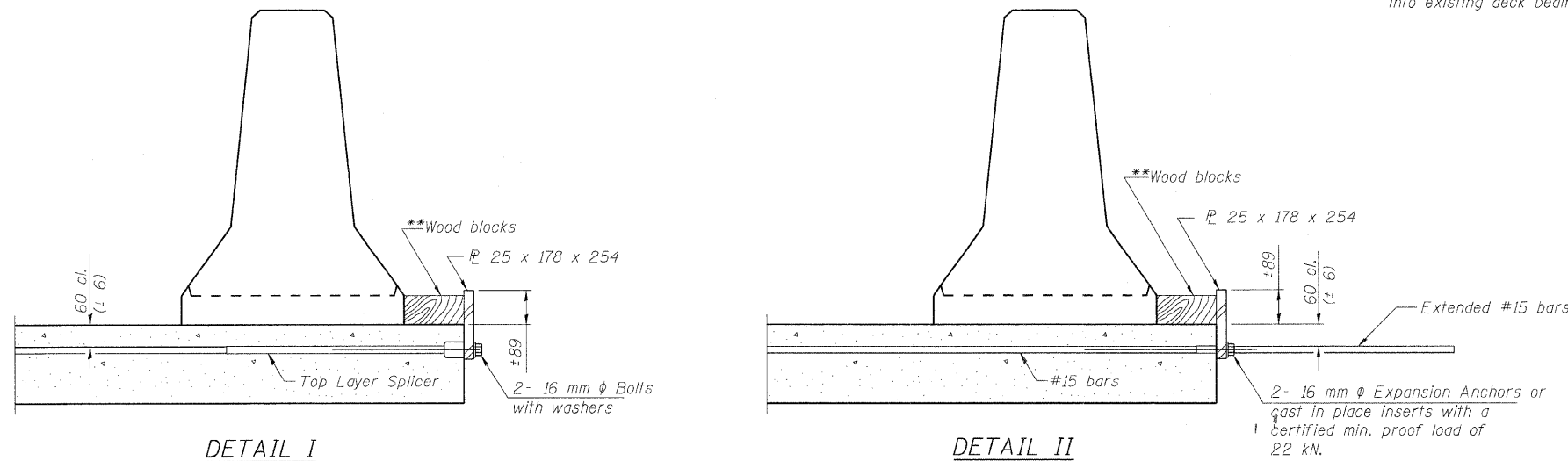
Detail II - With Extended Reinforcement Bars:  
Connect one (1) 25 x 178 x 254 steel  $\bar{R}$  to the concrete slab or concrete wearing surface with 2- 16 mm  $\phi$  Expansion Anchors or cast in place inserts spaced between the top layer of reinforcement at approximate  $\bar{C}$  of each barrier panel.

Cost of anchorage is included with Temporary Concrete Barrier. The 25 x 178 x 254 plate shall not be removed until stage II construction forms and all reinforcement bars are in place and the concrete is ready to be placed.

All dimensions are in millimeters (mm) except as noted.

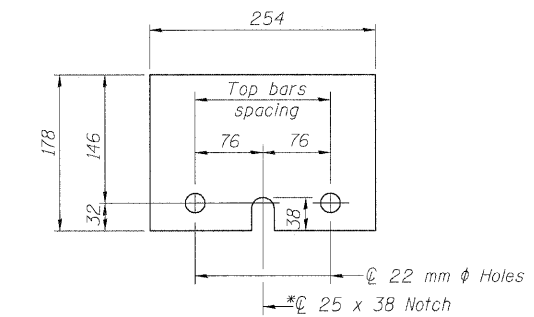
\*\*\*Dimension shown is minimum required embedment into concrete. If hot-mix asphalt wearing surface is present, minimum embedment shall be in addition to wearing surface depth.

\*\*\*If existing deck beam is to remain in place after stage construction, embedment shall only be into wearing surface and not into existing deck beam concrete.



DETAIL I

DETAIL II



STEEL RETAINER  $\bar{R}$  25 x 178 x 254

\* Required only with Detail II

\*\*Wood blocks may be omitted when required to provide minimum stage traffic lane width. When the wood blocks are omitted, the concrete barrier shall be in direct contact with the steel retainer plate.

DESIGNED - EKM
CHECKED - SCD
DRAWN - RD
CHECKED - EKM



**Giorba Group, Inc.**  
CONSULTING ENGINEERS  
5507 North Cumberland Avenue, Suite 402 Chicago, Illinois 60656  
Tel. 773.775.4009 Fax 773.775.4014 Email chicago@giorba.com

TEMPORARY CONCRETE BARRIER  
FOR STAGE CONSTRUCTION  
STRUCTURE NO. 016-2034

SHEET NO. S-4	F.A.I. RTE.	SECTION	COUNTY	TOTAL SHEETS	SHEET NO.
S-26 SHEETS	57	1818.3B-R	COOK	58	28
FED. ROAD DIST. NO.			ILLINOIS FED. AID PROJECT		
CONTRACT NO. 60862					