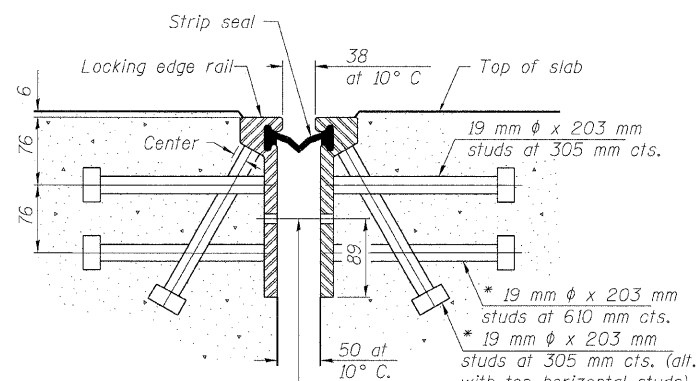
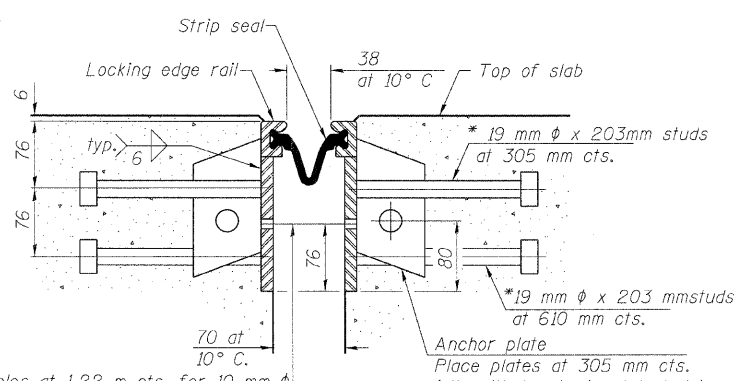


STATE OF ILLINOIS
DEPARTMENT OF TRANSPORTATION

*Granular or solid flux filled headed studs conforming to Article 1006.32 of the Std. Specs., automatically end welded.



11 mm φ holes at 1.22 m cts. for 10 mm φ bolts. All bolts shall be burned, sawed, or chipped off flush with the plates after forms are removed, typ.



11 mm φ holes at 1.22 m cts. for 10 mm φ bolts. All bolts shall be burned, sawed, or chipped off flush with the plates after forms are removed, typ.

Notes:

The strip seal shall be made continuous and shall have a minimum thickness of 6 mm. The configuration of the strip seal shall match the configuration of the Locking Edge Rails. Open or "webbed" strip seal gland configurations are not permitted. The gland shall be sized for a maximum rated movement of 100 mm.

The height and thickness of the Locking Edge Rails shown are minimum dimensions. The actual configuration of the Locking Edge Rails and matching strip seal may vary from manufacturer to manufacturer. Flanged edge rails will not be allowed. Locking Edge Rails may be spliced at slope discontinuities and stage construction joints.

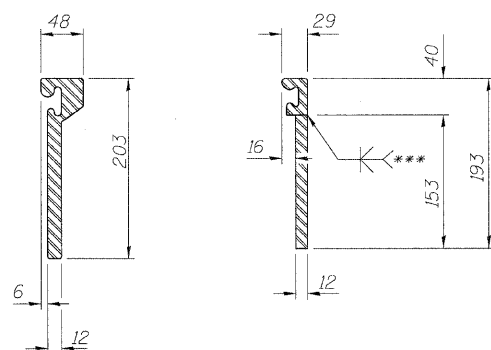
The manufacturer's recommended installation methods shall be followed.

The joint opening and deck dimensions detailed on the superstructure are based on a rolled rail expansion joint. If the Contractor elects to use the welded rail expansion joint, the opening and deck dimensions shall be modified according to the dimensions detailed on this sheet. Required modifications shall be made at no additional cost to the State.

All steel components shall be galvanized after fabrication according to Article 520.03 of the Standard Specifications.

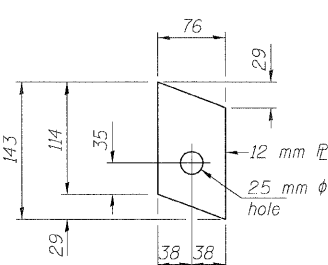
All dimensions are in millimeters (mm) except as noted.

SECTION THRU
ROLLED RAIL JOINT

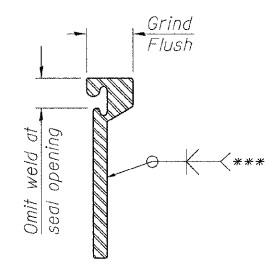


ROLLED
(EXTRUDED) RAIL WELDED RAIL

SECTION THRU
WELDED RAIL JOINT



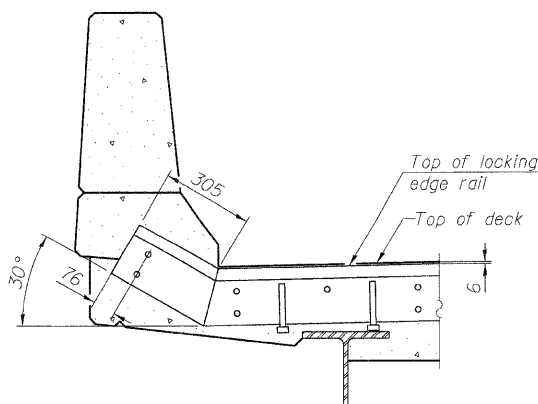
ANCHOR PLATE
(for welded rail)



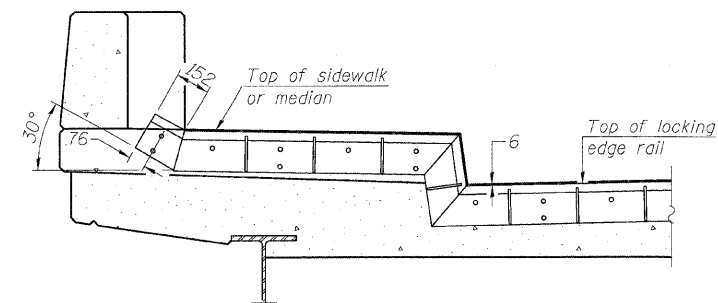
***Back gouge not required if complete joint penetration is verified by mock-up.

LOCKING EDGE
RAIL SPLICE

The inside of the locking edge rail groove shall be free of weld residue.



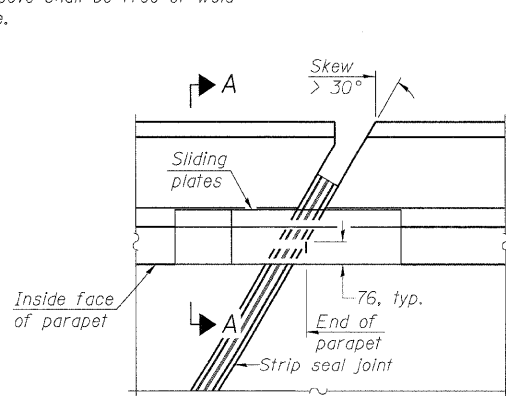
AT PARAPET



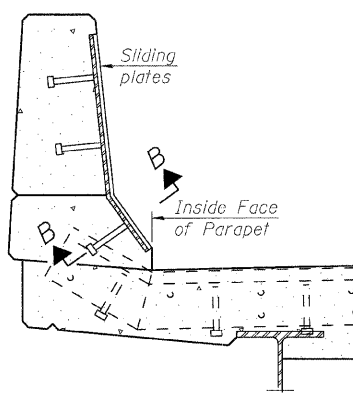
AT SIDEWALK OR MEDIAN

Shorter plates with a single row of studs at 305 cts. may be necessary on medians which are shallower than 228. See manufacturer's recommendation.

LOCKING EDGE RAILS

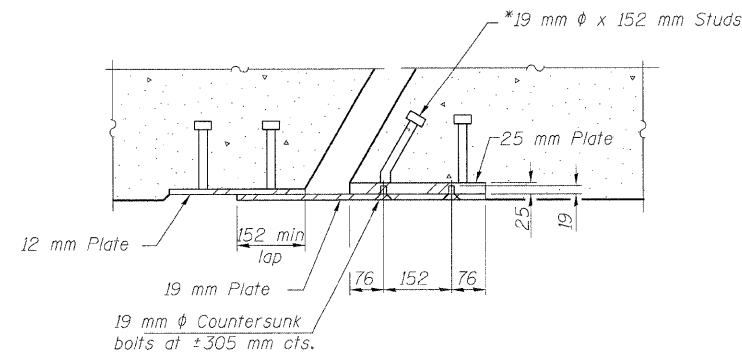


PLAN



SECTION A-A

TYPICAL END TREATMENTS



SECTION B-B

BILL OF MATERIAL

ITEM	UNIT	QUANTITY
Preformed Joint Strip Seal	Meter	24.1

PREFORMED JOINT STRIP SEAL
STRUCTURE NO. 016-2034

SHEET NO. S-12	F.A.I. RTE.	SECTION	COUNTY	TOTAL SHEETS	SHEET NO.
S-26 SHEETS	57	1818.3B-R	COOK	58	36
FED. ROAD DIST. NO.			ILLINOIS FED. AID PROJECT		
CONTRACT NO. 60862					

DESIGNED - EKM
CHECKED - SCD
DRAWN - RD
CHECKED - EKM



Ciorba Group, Inc.
CONSULTING ENGINEERS
5507 North Cumberland Avenue, Suite 402 Chicago, Illinois 60656
Tel. 773.775.4009 Fax 773.775.4014 Email chicago@ciorba.com

POINT BLOCK DETAILS
(for skews > 30°)

1/16/2009

nt:\proj\13153\125\pk_design\structure\13153-02-F5-12.DGN