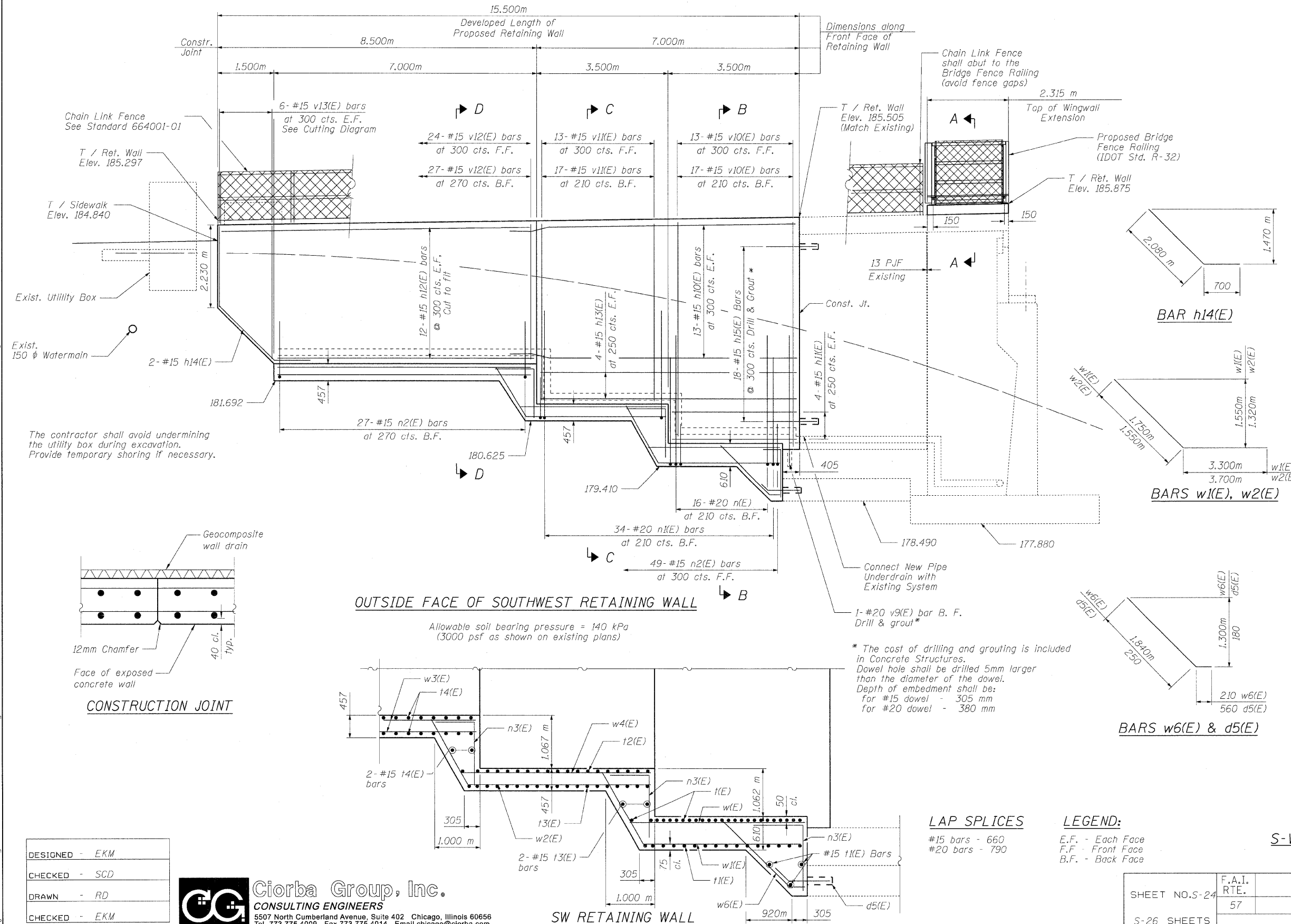


STATE OF ILLINOIS  
DEPARTMENT OF TRANSPORTATION



**BILL OF MATERIAL**

Bar	No.	Size	Length	Shape
d3(E)	28	# 15	0.480 m	┌
d4(E)	37	# 15	0.680 m	┌
d5(E)	14	# 15	0.810 m	┌
h8(E)	4	# 15	1.200 m	—
h9(E)	16	# 15	2.230 m	—
h10(E)	26	# 15	7.820 m	—
h11(E)	8	# 15	3.470 m	—
h12(E)	24	# 15	8.720 m	—
h13(E)	8	# 15	6.980 m	—
h14(E)	2	# 15	2.780 m	—
h15(E)	18	# 15	0.900 m	—
n(E)	16	# 20	3.670 m	┌
n1(E)	34	# 20	3.070 m	┌
n2(E)	76	# 15	1.430 m	┌
n3(E)	42	# 15	0.540 m	┌
t(E)	25	# 20	4.900 m	—
t1(E)	19	# 15	4.900 m	—
t2(E)	19	# 20	3.900 m	—
t3(E)	21	# 15	3.900 m	—
t4(E)	56	# 15	3.200 m	—
v9(E)	1	# 20	3.450 m	—
v10(E)	30	# 15	5.400 m	—
v11(E)	30	# 15	4.270 m	—
v12(E)	51	# 15	3.080 m	—
v13(E)	6	# 15	5.210 m	—
w(E)	23	# 15	3.000 m	—
w1(E)	13	# 15	5.050 m	—
w2(E)	11	# 15	5.250 m	—
w3(E)	66	# 15	3.150 m	—
w4(E)	19	# 15	3.520 m	—
w5(E)	31	# 15	2.000 m	—
w6(E)	17	# 15	2.050 m	—
Porous Granular Embankment, Special			Cu. m	57
Structure Excavation			Cu. m	272
Concrete Structures			Cu. m	65.9
Reinforcement Bars, Epoxy Coated			kg	4,210
Geocomposite Wall Drain			Sq. m	48
Pipe Underdrains for Structures 100 mm			Meter	17

**NOTES:**

1. Reinforcement bars designated (E) shall be epoxy coated.
2. Bars indicated thus 1 x 4-#15 etc, indicates 1 line of bars with 4 lengths per line.
3. All edges shall have 20 mm chamfer.
4. For Sections B-B, C-C and D-D see Sheet S-25, for section A-A see Sheet S-23.
5. Work this sheet with S-23 and S-25.

**S-W RETAINING WALL - ELEVATION  
STRUCTURE NO. 016-2034**

DESIGNED - EKM
CHECKED - SCD
DRAWN - RD
CHECKED - EKM

**Ciorba Group, Inc.**  
CONSULTING ENGINEERS  
5507 North Cumberland Avenue, Suite 402 Chicago, Illinois 60656  
Tel. 773.775.4009 Fax 773.775.4014 Email chicago@ciorba.com

**LAP SPLICES**

#15 bars - 660  
#20 bars - 790

**LEGEND:**

E.F. - Each Face  
F.F. - Front Face  
B.F. - Back Face

SHEET NO. S-24	F.A.I. RTE. 57	SECTION 1818.3B-R	COUNTY COOK	TOTAL SHEETS 58	SHEET NO. 48
S-26 SHEETS			CONTRACT NO. 60862		
FED. ROAD DIST. NO.		ILLINOIS FED. AID PROJECT			