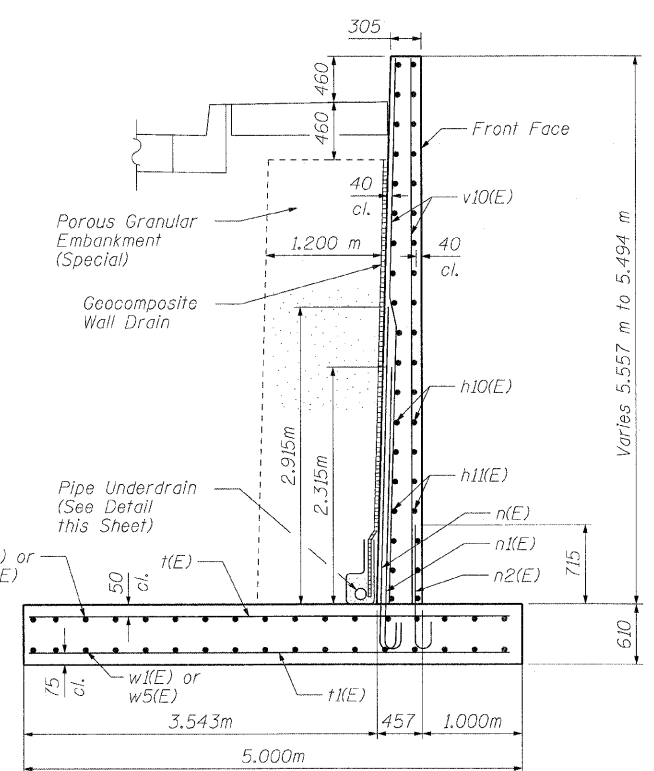
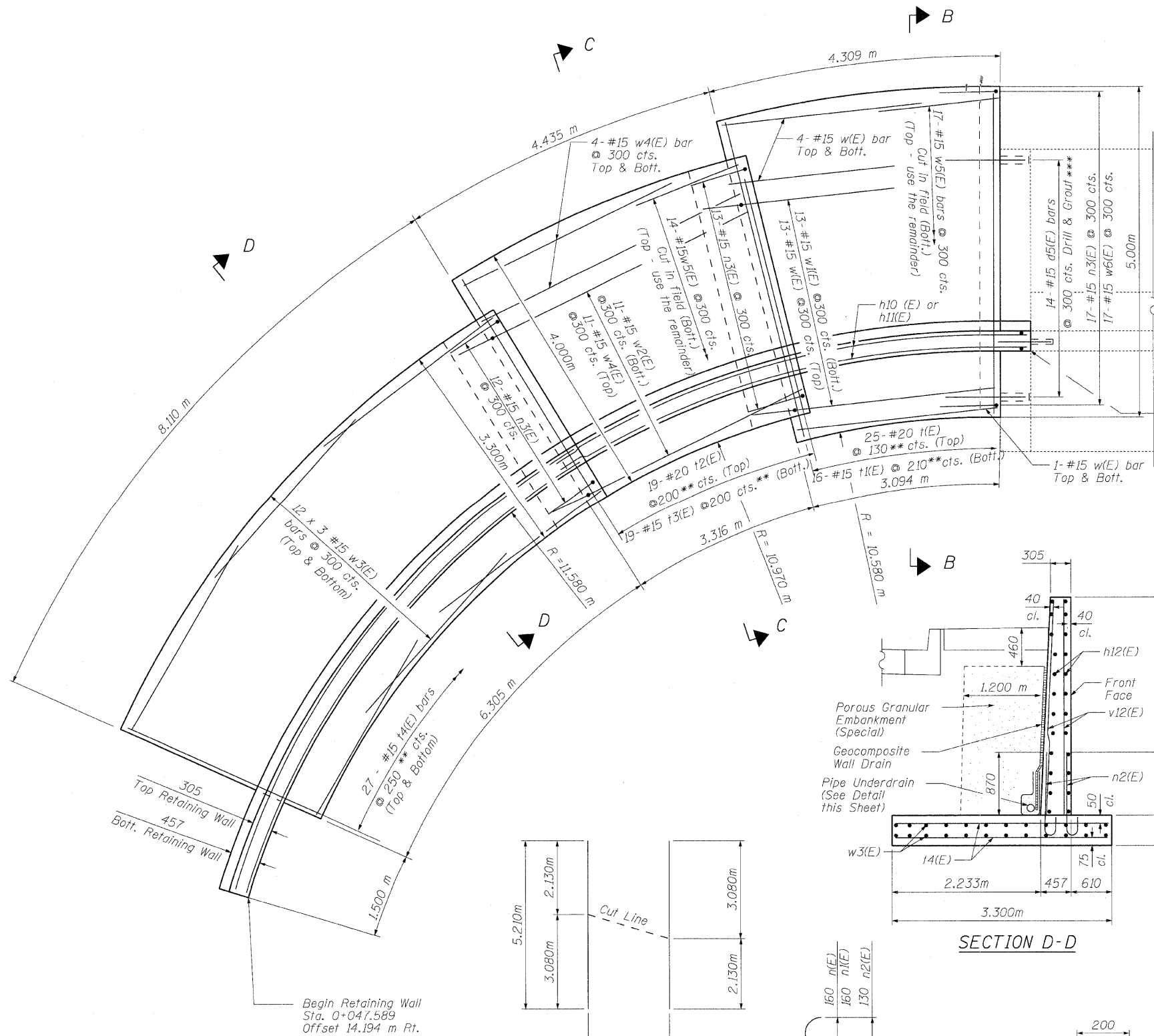
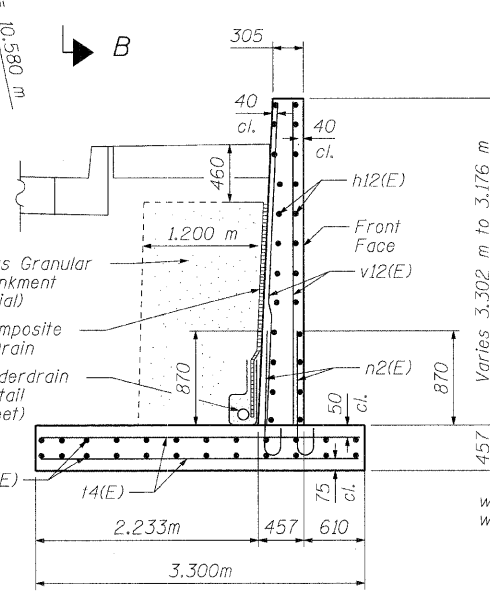


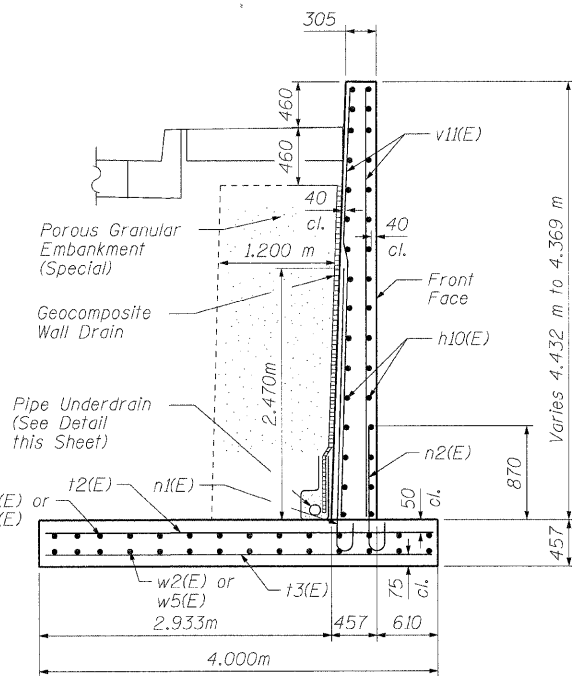
STATE OF ILLINOIS
DEPARTMENT OF TRANSPORTATION



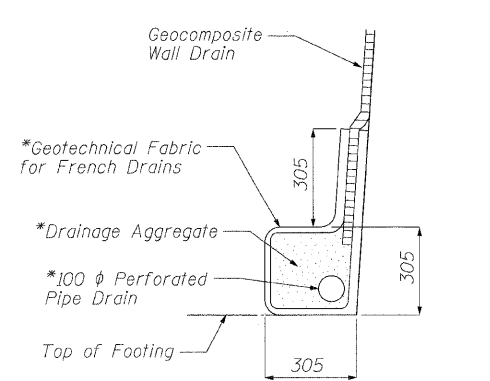
SECTION B-B



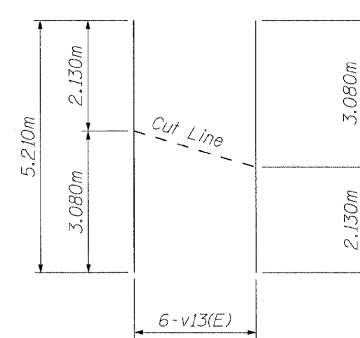
SECTION D-D



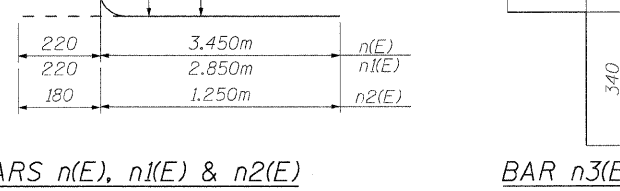
SECTION C-C



PIPE UNDERDRAIN DETAIL



CUTTING DIAGRAM



BARS n(E), n1(E) & n2(E) BAR n3(E)

** Measured along the front face of Retaining Wall
*** The cost of drilling and grouting is included in "Concrete Structures." Dowel hole shall be drilled 5mm larger than the diameter of the dowel. Depth of embedment shall be: for #15 dowel - 305 mm for #20 dowel - 380 mm

End Retaining Wall Sta. 0+059.362 Offset 5.943 m Rt.

Note:
Work this sheet with S-23 and S-24.

LAP SPLICES
#15 bars - 660
#20 bars - 790

S-W RETAINING WALL - PLAN & SECTIONS
STRUCTURE NO. 016-2034

DESIGNED -	EKM
CHECKED -	SCD
DRAWN -	RD
CHECKED -	EKM

Ciorba Group, Inc.
CONSULTING ENGINEERS
5507 North Cumberland Avenue, Suite 402 Chicago, Illinois 60656
Tel. 773.775.4009 Fax 773.775.4014 Email chicago@ciorba.com

SHEET NO. S-25 S-26 SHEETS	F.A.I. RTE.	SECTION	COUNTY	TOTAL SHEETS	SHEET NO.
	57	1818.3B-R	COOK	58	49
CONTRACT NO. 60862					
FED. ROAD DIST. NO.		ILLINOIS	FED. AID PROJECT		