
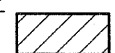
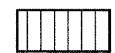


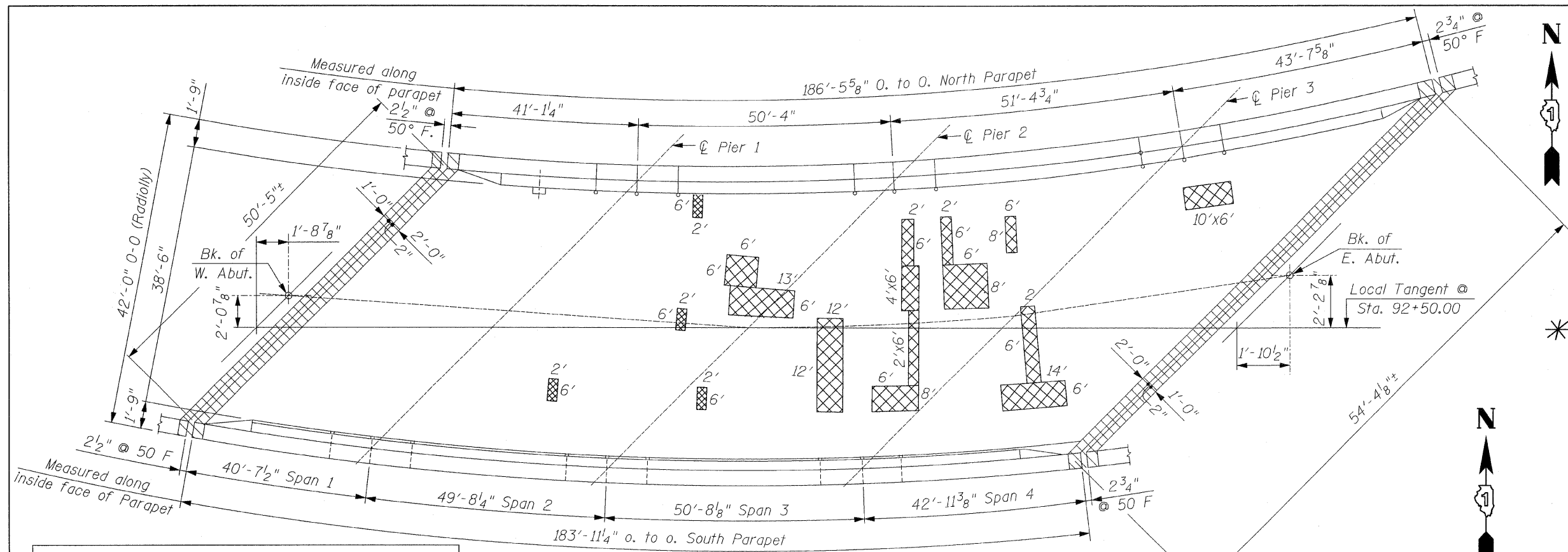
F.A.P. RTE.	SECTION	COUNTY	TOTAL SHEETS	SHEET NO.
607	13 B-1-1	WILL	16	9
STA.	TO STA.			
FED. ROAD DIST. NO.	ILLINOIS	FED. AID PROJECT		

**CONTRACT NO. 60C89**

**LEGEND:**

-  **F.D. = FULL DEPTH**
-  **P.D. = PARTIAL DEPTH**
-  **EXPANSION JOINT RECONSTRUCTION (CONCRETE REMOVAL)**

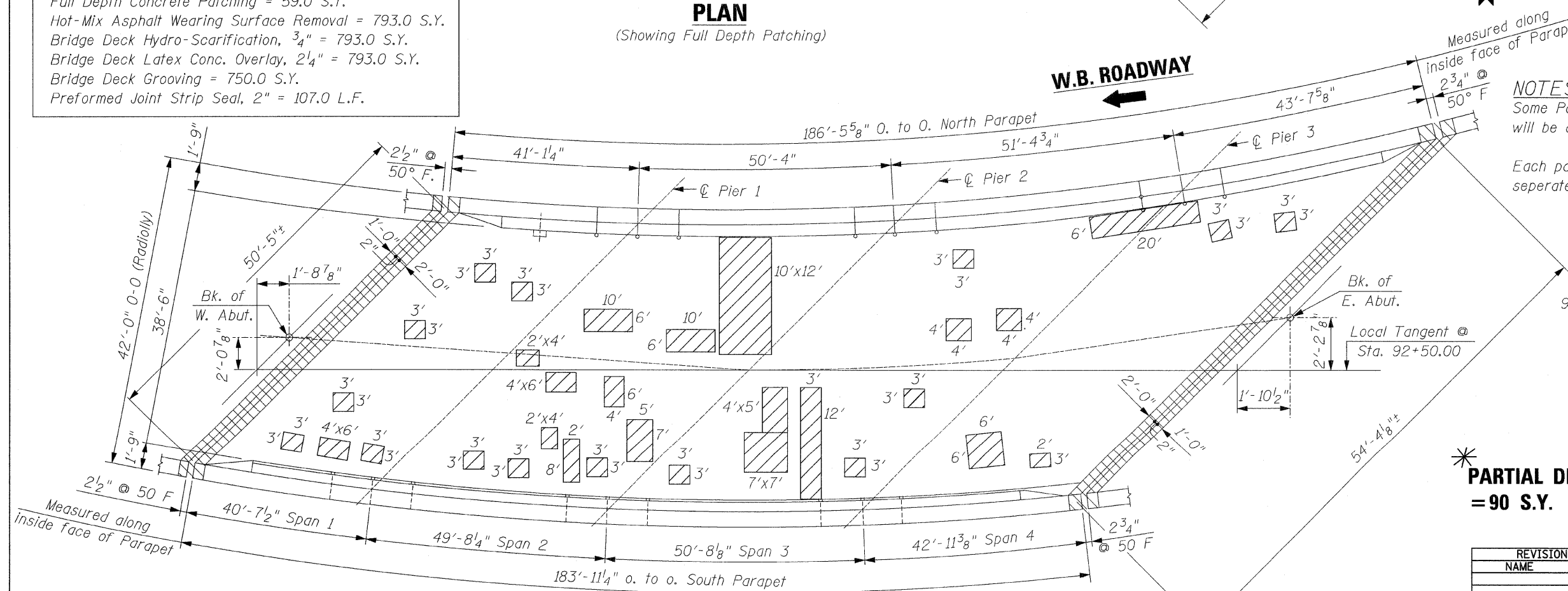
\* Deck Slab Partial Depth repairs Patches are shown for Information Only



**PLAN**

(Showing Full Depth Patching)

Full Depth Concrete Patching = 59.0 S.Y.  
 Hot-Mix Asphalt Wearing Surface Removal = 793.0 S.Y.  
 Bridge Deck Hydro-Scarification, 3/4" = 793.0 S.Y.  
 Bridge Deck Latex Conc. Overlay, 2 1/4" = 793.0 S.Y.  
 Bridge Deck Grooving = 750.0 S.Y.  
 Preformed Joint Strip Seal, 2" = 107.0 L.F.



**PLAN**

(Showing Partial Depth Patching)

**E.B. ROADWAY**



**W.B. ROADWAY**



**NOTES:**  
 Some Patches (As Determined in the Field by the Engineer) will be done in two (2) parts due to the Proposed Staging.

Each part of the Patches will be measured and paid for separately.

**W.B. ROADWAY**  
 9+9+9+60+60+120+16+9+24+120+9+5 = 454 S.F.

**E.B. ROADWAY**  
 9+9+24+5+8+24+9+9+8+  
 11+9+24+21+9+45+20+36+9+9+36+6 = 353 S.F.

Total = 807 S.F.

807 S.F./9 = 89.67 S.Y. Use 90 S.Y.

\* **PARTIAL DEPTH = 90 S.Y.**

REVISIONS	
NAME	DATE

ILLINOIS DEPARTMENT OF TRANSPORTATION  
 DECK CONCRETE PATCHING  
 U.S. RTE. 30  
 OVER  
 HICKORY CREEK  
 F.A.P. RTE. 607 SECTION: 13 B-1-1  
 WILL COUNTY  
 STRUCTURE NO. 099-0105  
 SCALE: NONE DRAWN BY: D.L./F.M.  
 DATE: JANUARY 08, 2009 CHECKED BY: B.N.S./S.J.P.  
**CHRISTIAN-ROGE & ASSOC., INC.**  
 CHICAGO ILLINOIS