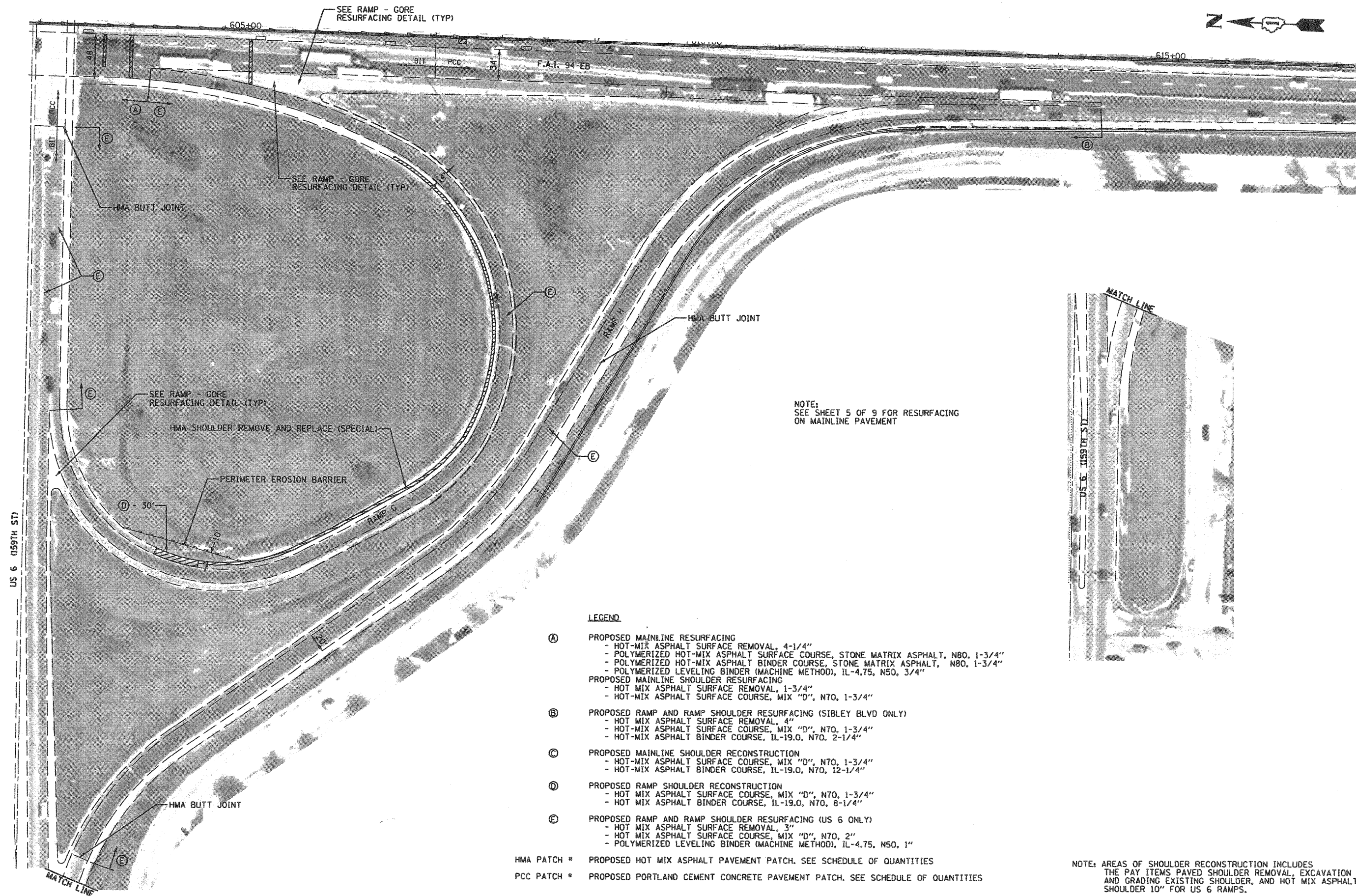


SEE SHEET 8 OF 9



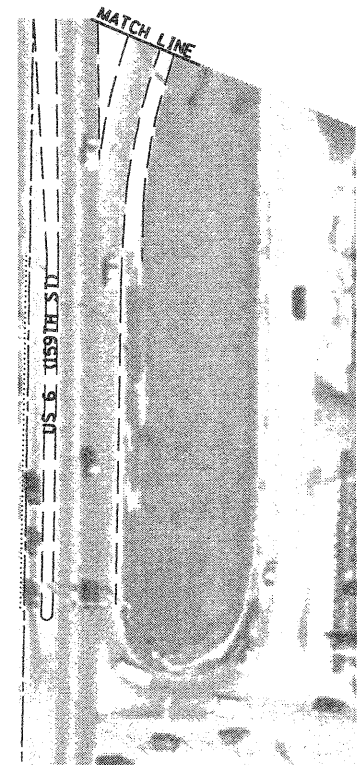
SEE SHEET 6 OF 9



NOTE:
SEE SHEET 5 OF 9 FOR RESURFACING
ON MAINLINE PAVEMENT

LEGEND

- (A) PROPOSED MAINLINE RESURFACING
 - HOT-MIX ASPHALT SURFACE REMOVAL, 4-1/4"
 - POLYMERIZED HOT-MIX ASPHALT SURFACE COURSE, STONE MATRIX ASPHALT, N80, 1-3/4"
 - POLYMERIZED HOT-MIX ASPHALT BINDER COURSE, STONE MATRIX ASPHALT, N80, 1-3/4"
 - POLYMERIZED LEVELING BINDER (MACHINE METHOD), IL-4.75, N50, 3/4"
 - (B) PROPOSED MAINLINE SHOULDER RESURFACING
 - HOT MIX ASPHALT SURFACE REMOVAL, 1-3/4"
 - HOT-MIX ASPHALT SURFACE COURSE, MIX "D", N70, 1-3/4"
 - (C) PROPOSED RAMP AND RAMP SHOULDER RESURFACING (SIBLEY BLVD ONLY)
 - HOT MIX ASPHALT SURFACE REMOVAL, 4"
 - HOT-MIX ASPHALT SURFACE COURSE, MIX "D", N70, 1-3/4"
 - HOT-MIX ASPHALT BINDER COURSE, IL-19.0, N70, 2-1/4"
 - (D) PROPOSED MAINLINE SHOULDER RECONSTRUCTION
 - HOT-MIX ASPHALT SURFACE COURSE, MIX "D", N70, 1-3/4"
 - HOT-MIX ASPHALT BINDER COURSE, IL-19.0, N70, 12-1/4"
 - (E) PROPOSED RAMP SHOULDER RECONSTRUCTION
 - HOT MIX ASPHALT SURFACE COURSE, MIX "D", N70, 1-3/4"
 - HOT MIX ASPHALT BINDER COURSE, IL-19.0, N70, 8-1/4"
 - (F) PROPOSED RAMP AND RAMP SHOULDER RESURFACING (US 6 ONLY)
 - HOT MIX ASPHALT SURFACE REMOVAL, 3"
 - HOT MIX ASPHALT SURFACE COURSE, MIX "D", N70, 2"
 - POLYMERIZED LEVELING BINDER (MACHINE METHOD), IL-4.75, N50, 1"
- HMA PATCH * PROPOSED HOT MIX ASPHALT PAVEMENT PATCH. SEE SCHEDULE OF QUANTITIES
 PCC PATCH * PROPOSED PORTLAND CEMENT CONCRETE PAVEMENT PATCH. SEE SCHEDULE OF QUANTITIES



NOTE: AREAS OF SHOULDER RECONSTRUCTION INCLUDES THE PAY ITEMS PAVED SHOULDER REMOVAL, EXCAVATION AND GRADING EXISTING SHOULDER, AND HOT MIX ASPHALT SHOULDER 10" FOR US 6 RAMPS.

FILE NAME = 0160021-026-PLAN-9.dgn	USER NAME = dvozmarski	DESIGNED -	REVISED -	STATE OF ILLINOIS DEPARTMENT OF TRANSPORTATION	BISHOP FORD EXPRESSWAY (I-94) RESURFACING PLAN	F.A.I. RTE. 94	SECTION (0405.ETC.42-7&0707RS-11)	COUNTY COOK	TOTAL SHEETS 133	SHEET NO. 28		
PLOT SCALE = 100.00' / IN.	DATE = 2/5/2009	DRAWN - DMW	REVISED -			SCALE: 1" = 50'	SHEET NO. 9 OF 9 SHEETS	STA. 605+00	TO STA. 607+28	CONTRACT NO. 60021		
PLOT DATE = 2/5/2009	DATE = 2/5/2009	CHECKED -	REVISED -			FED. ROAD DIST. NO. ILLINOIS FED. AID PROJECT						