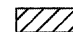





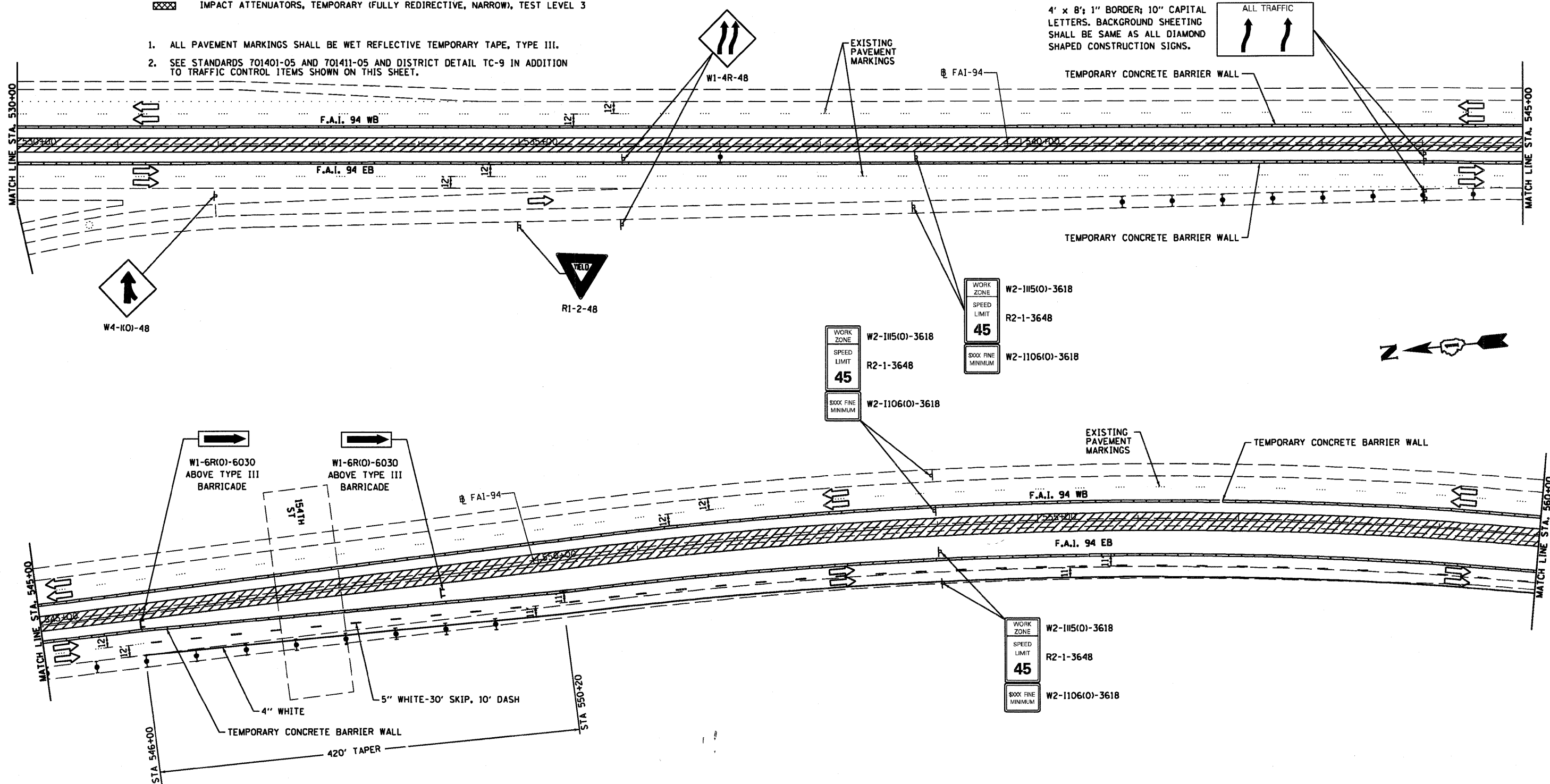


- LEGEND AND NOTES:**
-  WORK ZONE
 -  ARROW BOARD
 -  DIRECTION INDICATOR BARRICADE WITH STEADY BURNING MONODIRECTIONAL LIGHT AT 50' C-C SPACING
 -  DRUM WITH STEADY BURNING MONODIRECTIONAL LIGHT AT 25' C-C SPACING AT RAMP, 50' C-C SPACING IN LANE TAPERS AND 100' C-C SPACING AT ALL OTHER LOCATIONS.
 -  VERTICAL PANEL AT 200' C-C SPACING ON TANGENT AND 100' C-C SPACING ON CURVE. NOT REQUIRED WITH GUARDRAIL.
 -  IMPACT ATTENUATORS, TEMPORARY (FULLY REDIRECTIVE, NARROW), TEST LEVEL 3

1. ALL PAVEMENT MARKINGS SHALL BE WET REFLECTIVE TEMPORARY TAPE, TYPE III.
2. SEE STANDARDS 701401-05 AND 701411-05 AND DISTRICT DETAIL TC-9 IN ADDITION TO TRAFFIC CONTROL ITEMS SHOWN ON THIS SHEET.



FILE NAME = D:\60021-848-STAGE_PLAN.STG2.dgn

USER NAME = dwozniarski
 PLOT SCALE = 100.00' / IN.
 PLOT DATE = 2/5/2009

DESIGNED -
 DRAWN - DMW
 CHECKED -
 DATE - 2/5/2009

REVISED -
 REVISED -
 REVISED -
 REVISED -

STATE OF ILLINOIS
 DEPARTMENT OF TRANSPORTATION

BISHOP FORD EXPRESSWAY (I-94)
 SUGGESTED MAINTENANCE OF TRAFFIC - STAGE II PLAN

SCALE: 1" = 50' | SHEET NO. 20 OF 24 SHEETS | STA. 530+00 TO STA. 560+00

F.A.I. RTE.	SECTION	COUNTY	TOTAL SHEETS	SHEET NO.
94	(0405,ETC,42-7&0707RS-11	COOK	133	48
FED. ROAD DIST. NO. ILLINOIS FED. AID PROJECT			CONTRACT NO. 60021	