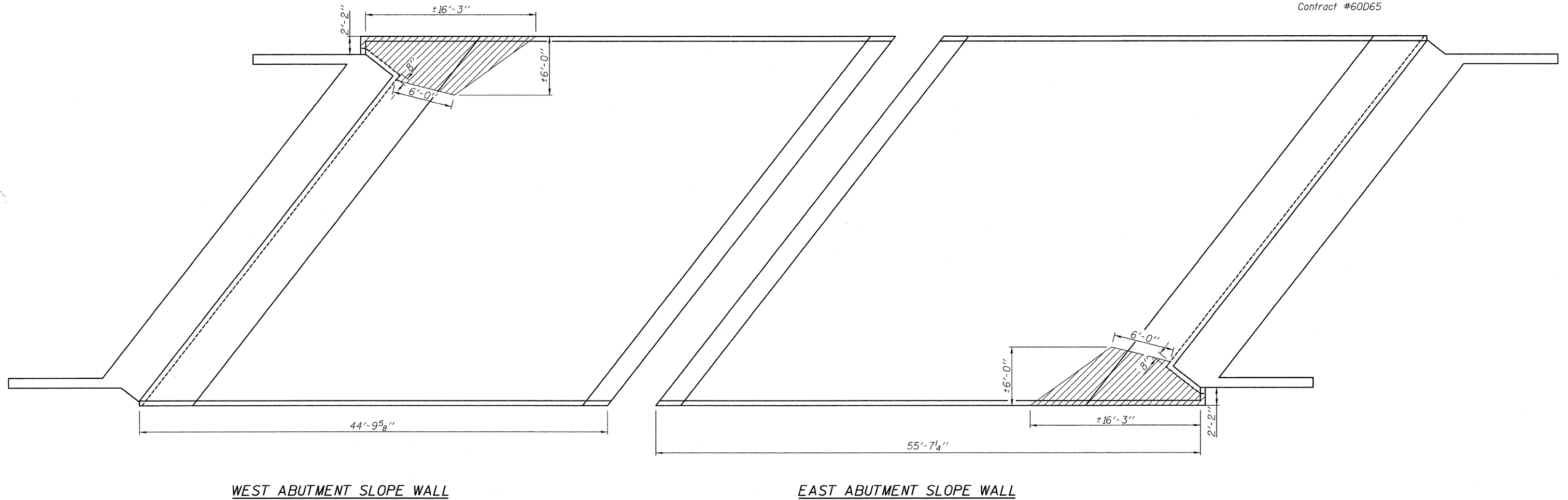
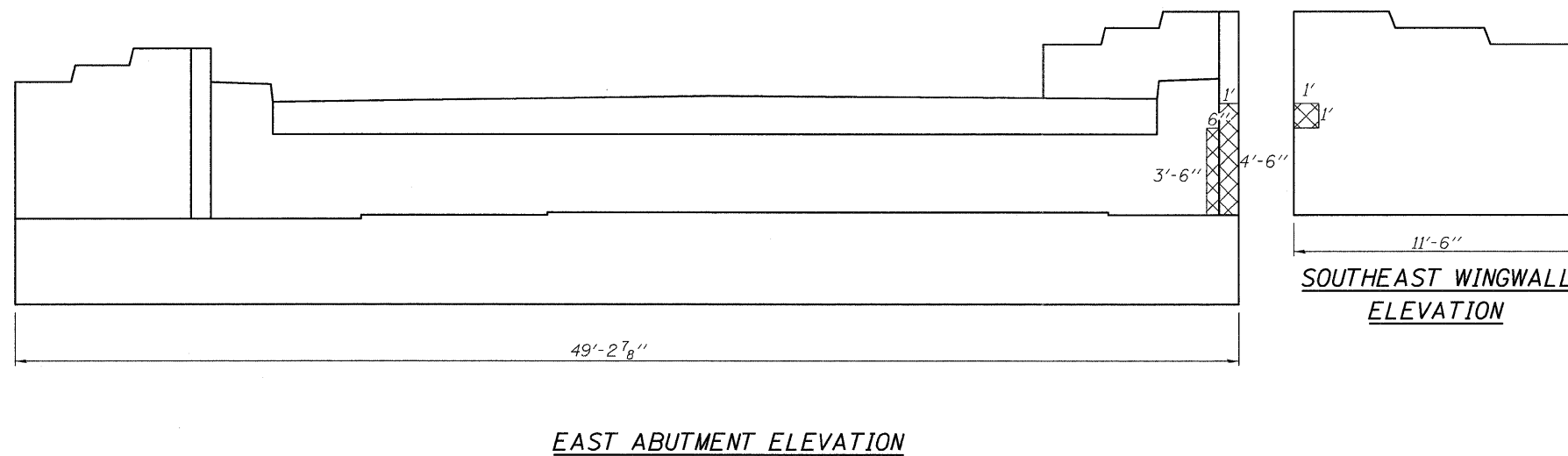


Contract #60D65



WEST ABUTMENT SLOPE WALL

EAST ABUTMENT SLOPE WALL



EAST ABUTMENT ELEVATION

SOUTHEAST WINGWALL ELEVATION

BILL OF MATERIAL

Item	Unit	Quantity
Structural Repair of Concrete (Depth equal to or less than 5')	Sq. Ft.	8
Slope Wall Repair	Sq. Yd.	15

- Structural Repair of Concrete (Depth equal to or less than 5')
- Slope Wall Repair

rjngroup
Excellence through Ownership
200 West Front Street
Wheaton, IL 60187

ILLINOIS DEPARTMENT OF TRANSPORTATION
ABUTMENT AND SLOPE
WALL REPAIRS
NORTH PEOTONE ROAD OVER I-57
FAI RTE 57 SECTION 99-2HB-1-I-2
WILL COUNTY
STATION 1035+6.40
STRUCTURE NO. 099-0162
DATE: 1-14-2009
DRAWN BY JMT
CHECKED BY WJV

K:\11225681\Structures\N Peotone over I-57\Repairs.dgn 1/14/2009