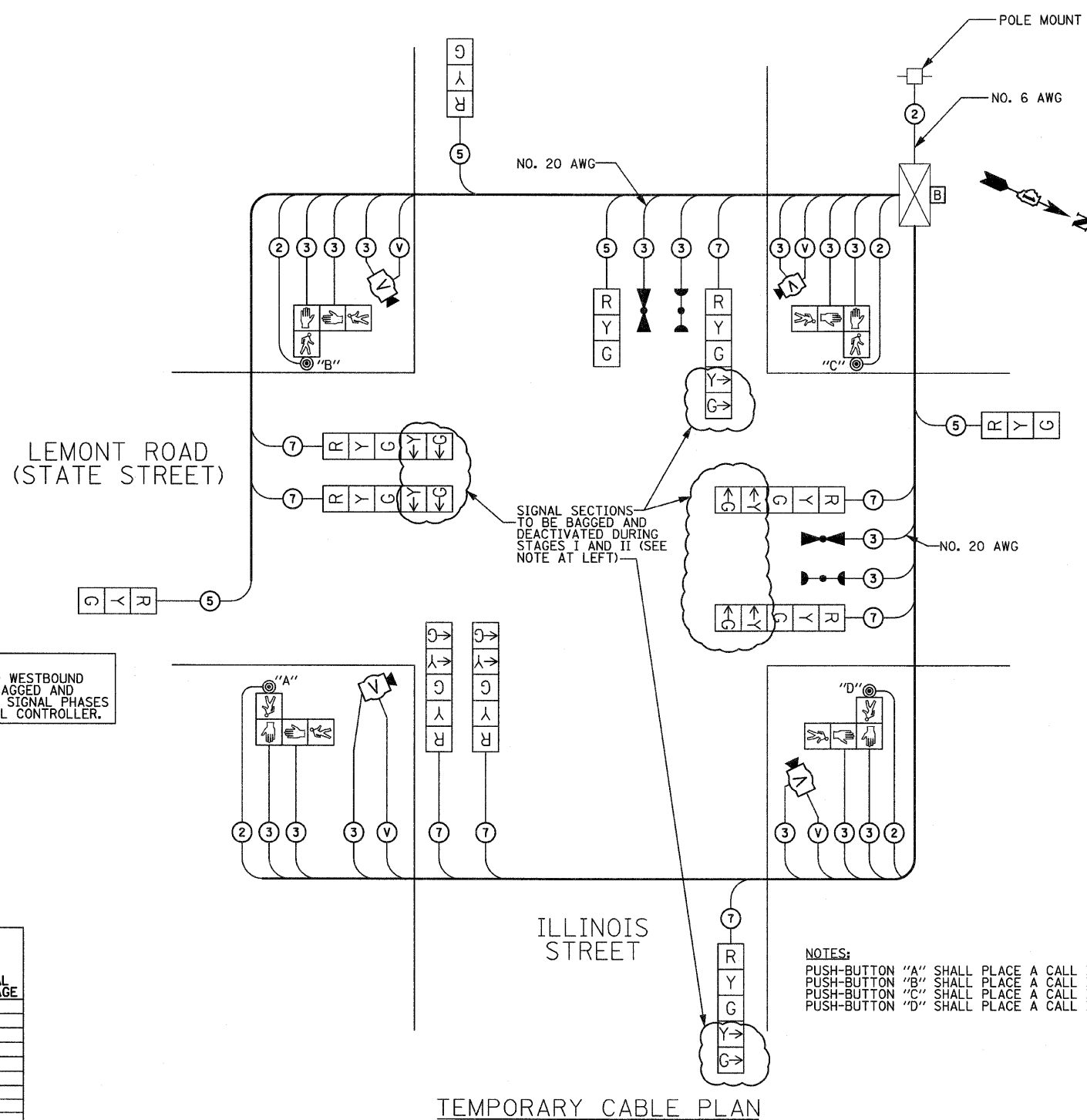
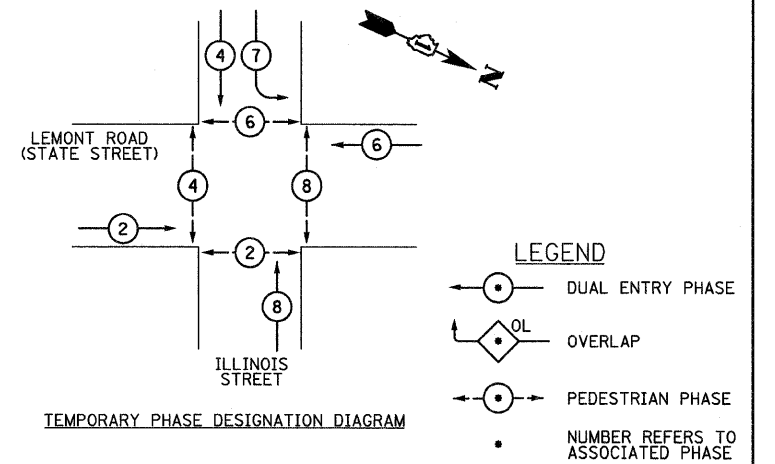


TEMPORARY CABLE PLAN LEGEND

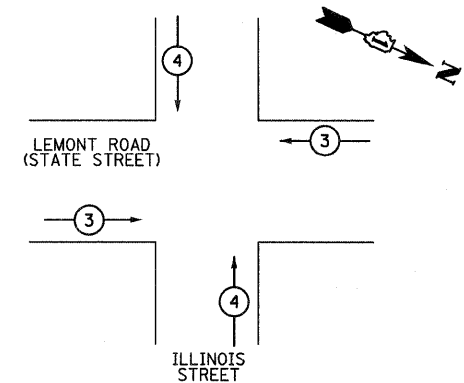
- R TEMPORARY TRAFFIC SIGNAL SECTION OR PEDESTRIAN SIGNAL SECTION 12" (300mm)
- X TEMPORARY CONTROLLER CABINET
- B TEMPORARY UNINTERRUPTIBLE POWER SUPPLY
- TEMPORARY SERVICE INSTALLATION
- ② DENOTES NUMBER OF CONDUCTORS ALL CABLE NO. 14 EXCEPT AS NOTED
- V VIDEO DETECTOR CABLE PER VIDEO SYSTEM MANUFACTURER'S RECOMMENDATIONS
- ▶ EMERGENCY VEHICLE LIGHT DETECTOR
- ◀ CONFIRMATION BEACON
- PEDESTRIAN PUSH-BUTTON DETECTOR
- P 12" (300mm) PEDESTRIAN SIGNAL SECTION
- V VIDEO VEHICLE DETECTOR



CONTROLLER SEQUENCE



EMERGENCY VEHICLE PRIORITY SEQUENCE



EMERGENCY VEHICLE PREEMPTORS		
EMERGENCY VEHICLE PREEMPTOR	3	4
MOVEMENT	⇌	↑↓

NOTE:
THE NORTHBOUND LEFT TURN, SOUTHBOUND LEFT TURN, AND WESTBOUND RIGHT TURN OVERLAP ARROW SIGNAL SECTIONS SHALL BE BAGGED AND DEACTIVATED DURING STAGES I & II. THE CORRESPONDING SIGNAL PHASES SHALL BE DEACTIVATED AT THE TEMPORARY TRAFFIC SIGNAL CONTROLLER.

NOTES:
PUSH-BUTTON "A" SHALL PLACE A CALL IN PHASES 2 AND 4
PUSH-BUTTON "B" SHALL PLACE A CALL IN PHASES 4 AND 6
PUSH-BUTTON "C" SHALL PLACE A CALL IN PHASES 6 AND 8
PUSH-BUTTON "D" SHALL PLACE A CALL IN PHASES 2 AND 8

I.D.O.T. TRAFFIC SIGNAL INSTALLATION ELECTRICAL SERVICE REQUIREMENTS					
TYPE	NO. OF LAMPS	WATTAGE INCAND.	LED % OPERATION	TOTAL WATTAGE	
SIGNAL (RED)	12	135	17	0.50	102
(YELLOW)	12	135	25	0.25	75
(GREEN)	12	135	15	0.25	45
ARROW	4	135	12	0.10	4.8
PED. SIGNAL	8	90	25	1.00	
CONTROLLER	1	100	100	1.00	100
ILLUM. SIGN		252		0.05	
FLASHER				0.50	
ENERGY COSTS TO:				TOTAL =	326.8

FOUNDATION (DEPTH)	FT. (m)	CABLE SLACK	FT. (m)	VERTICAL	FT. (m)
TYPE A - POST	4 (1.2)	HANDHOLE	6.5 (2.0)	ALL FOUNDATIONS	3.5 (1.0)
D - CONTROLLER	4 (1.2)	DOUBLE HANDHOLE	13 (4.0)	MAST ARM (L) POLE	20'+L-2'=(6m+L-0.6m)=
E - M. ARM POLE		SIGNAL POST	2 (1.0)		
24" (600 mm)	10 (3.0)	CONTROLLER CAB.	1 (0.5)	BRACKET MOUNTED	13 (4.0)
30" (750 mm)	15 (4.6)	FIBER OPTIC	13 (4.0)	PED PUSHBUTTON	4 (1.2)
		ELECTRIC SERVICE	1 (0.5)	ELECTRIC SERVICE	13.5 (4.1)
		GROUND CABLE	1 (0.5)	SERVICE TO GROUND	13.5 (4.1)
				POST MOUNTED	6 (1.8)

VILLAGE OF LEMONT
418 MAIN STREET
LEMONT, ILLINOIS 60439

ENERGY SUPPLY CONTACT: MR. MARK ANDERSON
PHONE: (815) 724-5988
COMPANY: COMED

FILE NAME = D168076-SHT-TS5.dgn
PLOT DATE = 1/26/2009

SPAAN Tech, Inc.
311 S. Wacker Drive, Suite 2400
Chicago, Illinois 60606
phone: 312.277.8800
fax: 312.277.8808
web: www.SpaanTech.com

DESIGNED - R.A.S.	REVISED -
DRAWN - R.A.S.	REVISED -
CHECKED - A.D.O.	REVISED -
DATE - JANUARY, 2009	REVISED -

STATE OF ILLINOIS
DEPARTMENT OF TRANSPORTATION

TEMPORARY CABLE PLAN - STAGES I AND II
LEMONT ROAD (STATE STREET) AT ILLINOIS STREET

SCALE: NONE SHEET NO. OF SHEETS STA. TO STA.

F.A.U. RTE.	SECTION	COUNTY	TOTAL SHEETS	SHEET NO.
2612	3104 B-1-T-2	COOK	80	22
CONTRACT NO. 60D76				
FED. ROAD DIST. NO. 1 [ILLINOIS] FED. AID PROJECT				