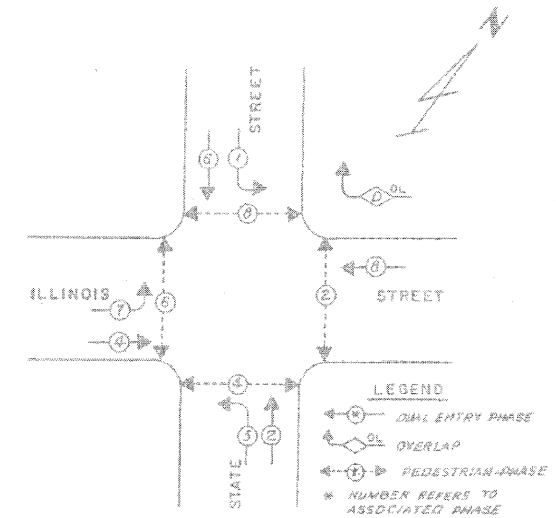


- CABLE PLAN LEGEND**
- 12" TRAFFIC SIGNAL SECTION
 - 12" PEDESTRIAN SIGNAL SECTION
 - CONTROLLER CABINET, EXISTING
 - SERVICE INSTALLATION, EXISTING
 - VEHICLE DETECTOR, INDUCTION LOOP
 - POSTBUTTON DETECTOR
 - 2 DENOTES NUMBER OF CONDUCTORS (WEP). ALL LOOP DETECTOR CABLE TO BE SHIELDED. ALL CABLE NO. 14 EXCEPT AS INDICATED.
 - INDICATES EXISTING CABLE
 - SIGNAL FACE WITH BACKPLATE
 - EXISTING SIGNAL SECTION
 - "S" TWISTED, SHIELDED

CONTROLLER SEQUENCE IV
 REFERRING TO STANDARD 2393, THE VEHICULAR AND PEDESTRIAN PHASES USED ARE DESIGNATED BELOW



PHASE DESIGNATION DIAGRAM
 Dual Entry - All Legs
 Protected / Permitted Left Turn Phasing
 with Eight Turn Overlaps

NOTE
 PUSH BUTTON "A" (PB "A") SHALL PLACE A CALL PHASES 4 AND 5

RIGHT TURN OVERLAP PHASE DESIGNATION

OVERLAP LETTER	PERMISSIVE PHASE	PROTECTED PHASE	DISPLAY
D	9	1	8

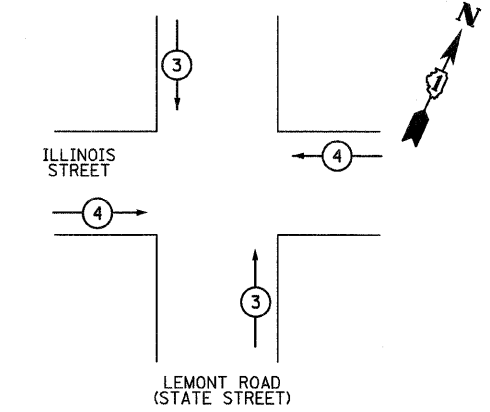
DISPLAY - THE YELLOW RIGHT ARROW OF THE OVERLAP SHALL BE INHIBITED DURING THE PERMISSIVE PHASE'S YELLOW INTERVAL. THE GREEN RIGHT ARROW OF THE OVERLAP SHALL BE INHIBITED DURING THE PERMISSIVE PHASE'S GREEN INTERVAL.

- CLEARANCE NOTES FOR RIGHT TURN OVERLAP WITH 5-SECTION RIGHT TURN SIGNAL READ DISPLAYS**
- CONTINUATION OF AN OVERLAP DURING ITS PERMISSIVE PHASE SHALL BE WITH A CIRCULAR YELLOW DISPLAYED TOGETHER WITH A GREEN RIGHT ARROW WHEN FOLLOWED BY THAT OVERLAP'S PROTECTED PHASE.
 - TERMINATION OF AN OVERLAP DURING ITS PERMISSIVE PHASE SHALL BE WITH A CIRCULAR YELLOW WHEN NOT FOLLOWED BY THAT OVERLAP'S PROTECTED PHASE.
 - CONTINUATION OF AN OVERLAP DURING ITS PROTECTED PHASE SHALL BE WITH A CIRCULAR RED DISPLAYED TOGETHER WITH A GREEN RIGHT ARROW WHEN FOLLOWED BY THAT OVERLAP'S PERMISSIVE PHASE.
 - TERMINATION OF AN OVERLAP DURING ITS PROTECTED PHASE SHALL BE WITH A CIRCULAR RED DISPLAYED TOGETHER WITH A YELLOW RIGHT ARROW WHEN NOT FOLLOWED BY THAT OVERLAP'S PERMISSIVE PHASE.

SCHEDULE OF QUANTITIES

ITEM	UNIT	QUANTITY
TEMPORARY TRAFFIC SIGNAL TIMINGS	EACH	1
DETECTOR LOOP, TYPE 1	FOOT	605
TEMPORARY TRAFFIC SIGNAL INSTALLATION	EACH	1

EXISTING EMERGENCY VEHICLE PRIORITY SEQUENCE



EMERGENCY VEHICLE PREEMPTORS

EMERGENCY VEHICLE PREEMPTOR	3	4
MOVEMENT	↑↓	⇌