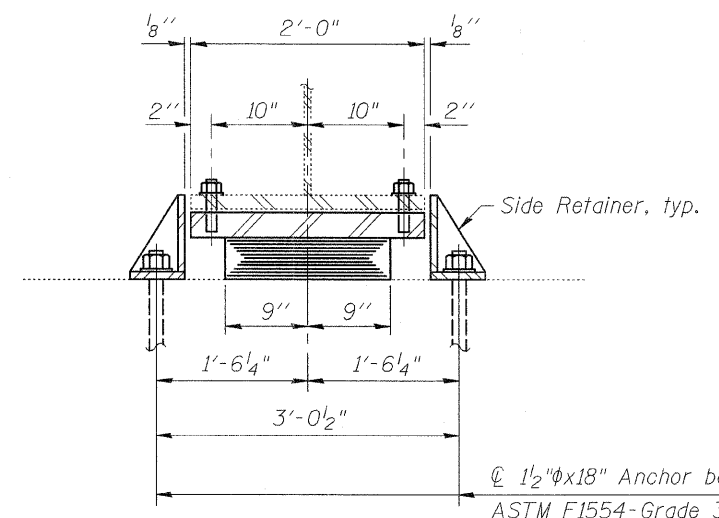


ELEVATION AT SOUTH ABUT.

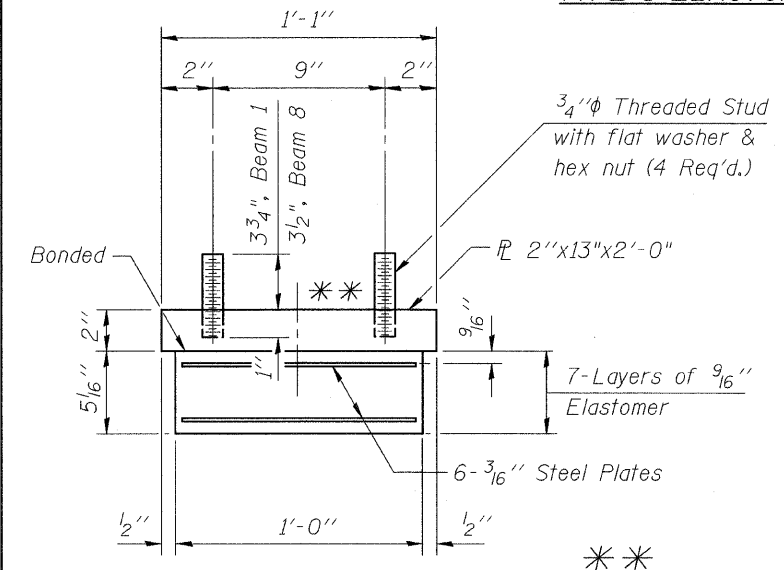


SECTION A-A

BEAM REACTIONS
(From Existing Plans)

| BEAM 1 | BEAM 8 |
|----------------------|----------------------|
| $R_D = 90.8k$ | $R_D = 79.2k$ |
| $R_L = 51.7k$ | $R_L = 53.9k$ |
| $R_{Imp} = 10.0k$ | $R_{Imp} = 10.6k$ |
| $R_{Total} = 152.5k$ | $R_{Total} = 143.7k$ |

TYPE I ELASTOMERIC EXP. BRG.



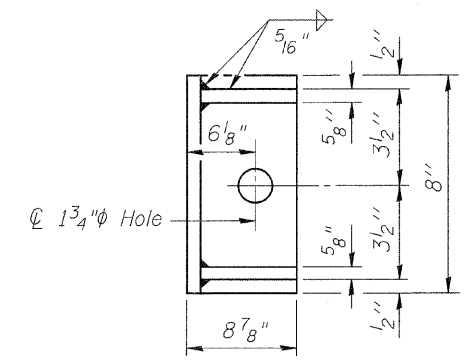
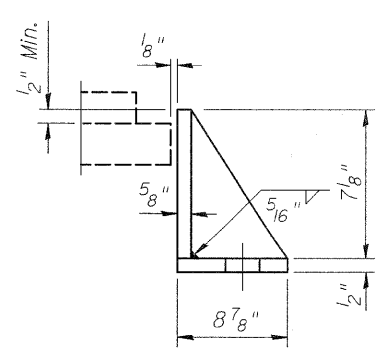
BEARING ASSEMBLY

Note:
Shim plates shall not be placed under Bearing Assembly.

**
Taper top surface of R at 15/32"

Notes:

Anchor Bolts shall be ASTM F1554 all-thread (or an Engineer-approved alternate material) of the Grade(s) and diameter(s) specified. ASTM A307 Grade C Anchor Bolts may be used in lieu of ASTM F1554 Grade 36 (Fy=36ksi). The corresponding specified Grade of AASHTO M314 Anchor Bolts may be used in lieu of ASTM F1554.
Drilled and set Anchor Bolts shall be installed according to Article 521.06 of the Standard Specifications.
Side Retainers and other Steel members required for the Bearing Assembly shall be included in the cost of Elastomeric Bearing Assembly, Type I.
Diaphragm removal and reinstallation may be required to facilitate drilling holes. Cost included with Elastomeric Bearing Assembly, Type I.
Prior to ordering any material, the Contractor shall verify in the field all Bearing height and Shim thickness dimensions.
Min. jack capacity = 95 tons for Beam 1 & 85 tons for Beam 8.



SIDE RETAINER

Equivalent rolled angle with stiffeners will be allowed in lieu of welded plates.

BILL OF MATERIAL
AT SOUTH ABUTMENT BEAM NO'S. 1 & 8

| Item | Unit | Total |
|--------------------------------------|------|-------|
| Elastomeric Bearing Assembly, Type I | Each | 2 |
| Anchor Bolts, 1 1/2" φ | Each | 4 |

I-2E-1 10-1-08

| | | | | | | | | | | | |
|-------------------------------------|-------------------------|-------------------|-----------|---|--|-----------------------------|----------------------|-------------|---------------------|---------------------------|--------------------|
| FILE NAME = brg_assem_type-1.dgn | USER NAME = IDOT | DESIGNED - B.N.S. | REVISED - | STATE OF ILLINOIS DEPARTMENT OF TRANSPORTATION | ELASTOMERIC BEARING ASSEMBLY, TYPE I LEMONT ROAD OVER DES PLAINES RIVER S.N. 016-2504 | F.A.U. RTE. 2612 | SECTION 3104 B-1-1-2 | COUNTY COOK | TOTAL SHEETS 80 | SHEET NO. 66 | |
| PLOT SCALE = 50.0000' / IN. | CHECKED - B.N.S./J.C.N. | REVISED - | SCALE: | | | SHEET NO. 530 OF 541 SHEETS | STA. | TO STA. | FED. ROAD DIST. NO. | ILLINOIS FED. AID PROJECT | CONTRACT NO. 60D76 |
| PLOT DATE = 1/30/2009 | DATE - JANUARY, 2009 | REVISED - | | | | | | | | | |
| | | | | | | | | | | | |

CR & A CHRISTIAN-ROGE & ASSOCIATES, INC.
ENGINEERS / PLANNERS / SURVEYORS
211 W. WACKER DRIVE CHICAGO, IL 60606
PHONE: (312)372-2023 FAX: (312)372-5274