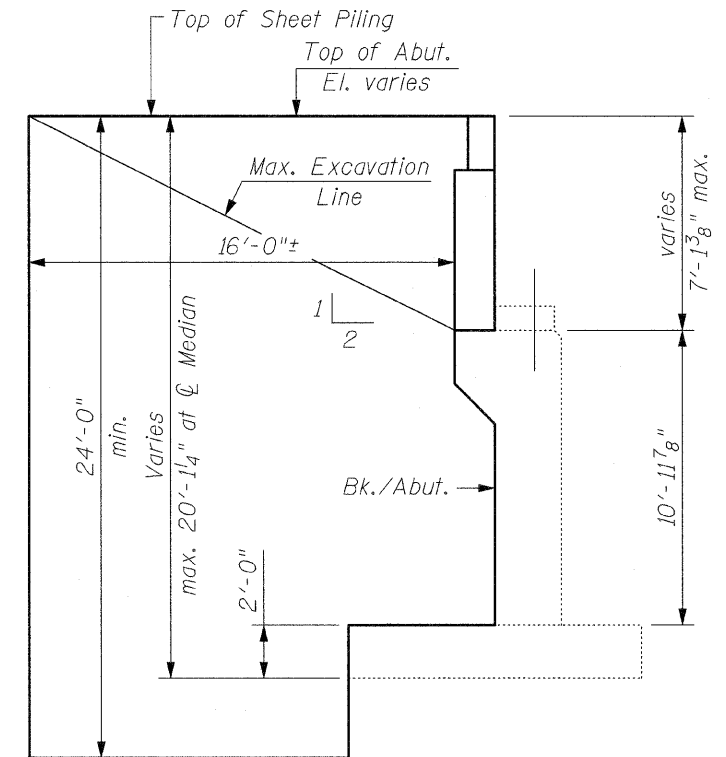


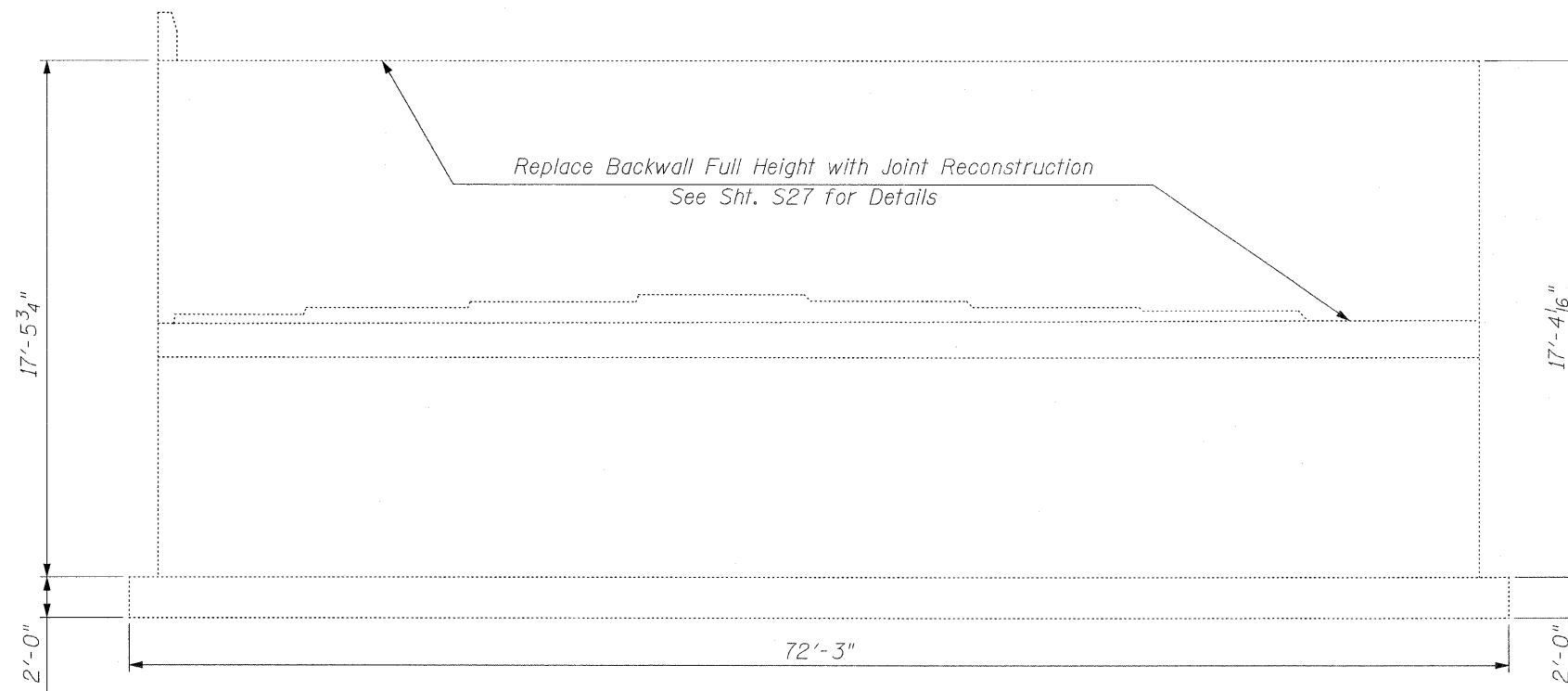
SOUTH ABUTMENT
(Looking South)

LEGEND:

 Structural Repair of Concrete
(Depth Equal to or Less Than 5 In.)



TEMPORARY SHEET PILING
AT NORTH ABUTMENT



NORTH ABUTMENT
(Looking North)

NOTES:

If the Contractor chooses to alter the Temporary Cantilevered Sheet Piling System design requirements shown on plans, a design submittal including plan details and Calculations will be required for review and acceptance by the Engineer.

Minimum Section Modulus of Sheet Piling = 14.3 in³/Ft.

Work this Sheet with Sht. S27.

BILL OF MATERIAL

Item	Unit	Total
Structural Repair of Concrete (Depth Equal to or Less Than 5 In.)	Sq. Ft.	54
Temporary Sheet Piling	Sq. Ft.	374



CHRISTIAN-ROGE & ASSOCIATES, INC.
ENGINEERS / PLANNERS / SURVEYORS
211 W. WACKER DRIVE CHICAGO, IL. 60606
PHONE: (312)372-2023 FAX: (312)372-5274

FILE NAME = abut_repair.dgn	USER NAME = IDOT	DESIGNED - B.N.S.	REVISED -	STATE OF ILLINOIS DEPARTMENT OF TRANSPORTATION	ABUTMENT REPAIRS LEMONT ROAD OVER DES PLAINES RIVER S.N. 016-2504	F.A.I.L. RTE. 2612	SECTION 3104 B-1-1-2	COUNTY COOK	TOTAL SHEETS 80	SHEET NO. 71		
PLOT SCALE = 50.0000' / IN.	CHECKED - B.N.S./J.C.N.	REVISED -	SCALE:			SHEET NO. S35 OF 541 SHEETS	STA. TO STA.	FED. ROAD DIST. NO.	ILLINOIS FED. AID PROJECT	CONTRACT NO. 60D76		
PLOT DATE = 1/30/2009	DATE - JANUARY, 2009	REVISED -										