

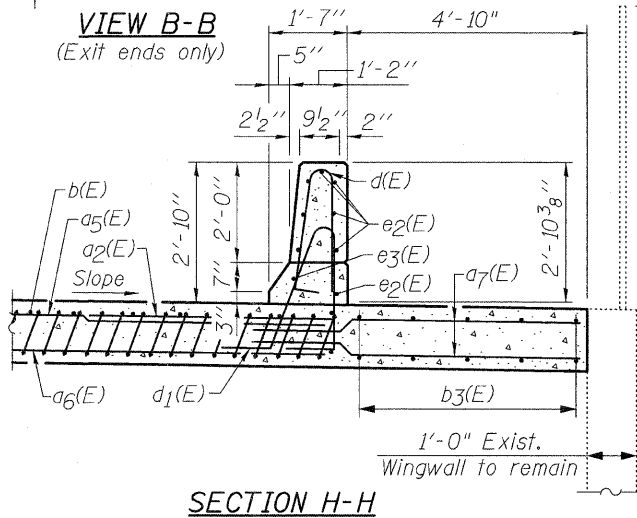
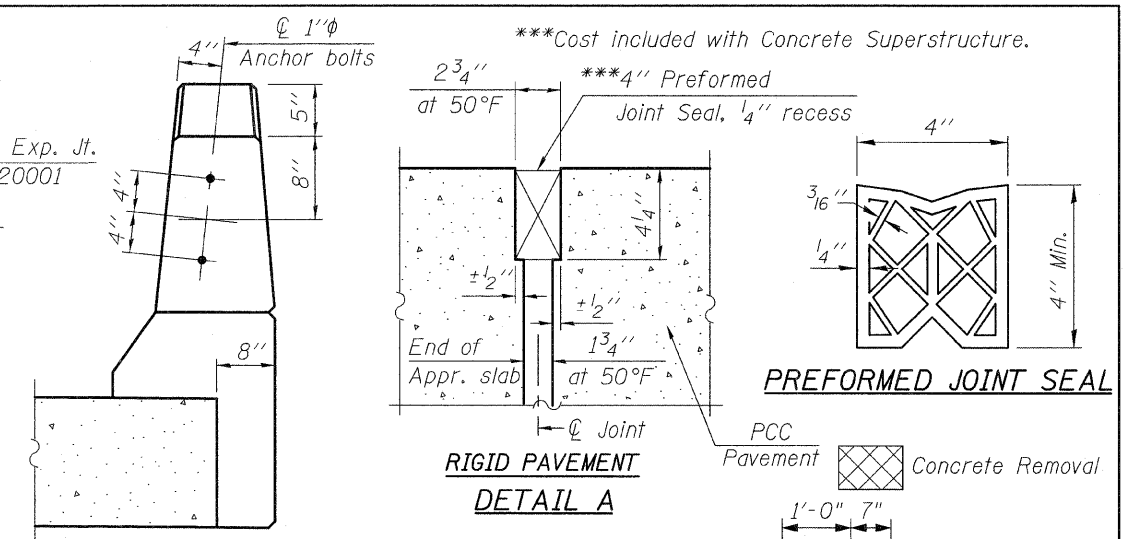
NORTH APPROACH SLAB

PLAN

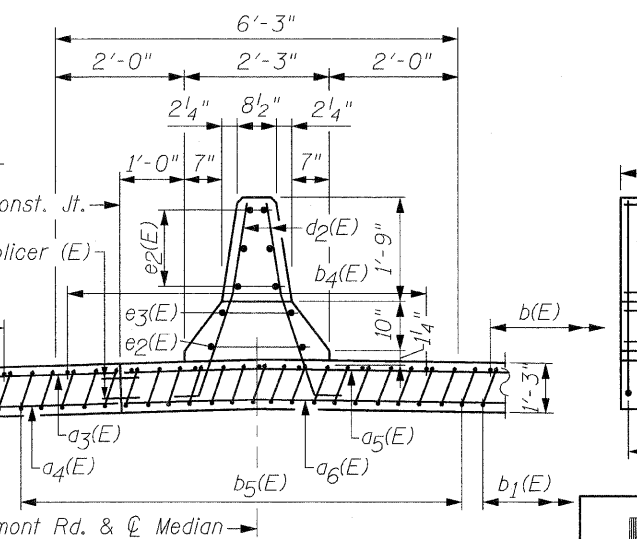
 6-#4b₄(E) bars @ 15" cts., top of slab
 15-#9b₅(E) bars @ 5" cts., bottom of slab

MIN. BAR LAP:
 #4 bars = 1'-8"
 #5 bars = 2'-2"

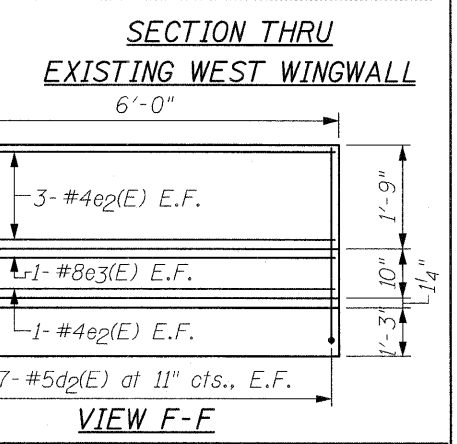
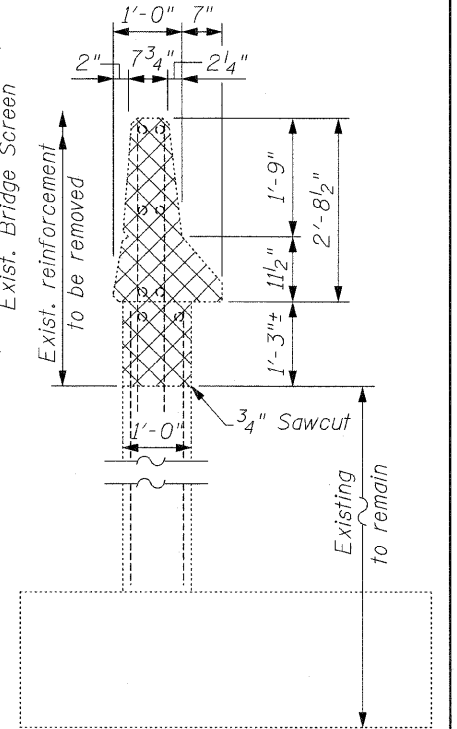
* Tilt #9b₁(E) or #9b₅(E) bars as required to maintain clearance.
 ** Alternate with a(E), a₃(E) or a₅(E) bars, typ. each parapet.



Note:
 See Sht. S41 for Sections C-C & D-D and View E-E



SECTION G-G
 (Sheet 1 of 2)
BRIDGE APPROACH SLAB DETAILS



BA-0 10-31-08

FILE NAME = approach_slab-1.dgn	USER NAME = IDOT	DESIGNED - B.N.S.	REVISED -
		DRAWN - R.E.S./D.L./F.M.	REVISED -
		CHECKED - B.N.S./J.C.N.	REVISED -
		DATE - JANUARY, 2009	REVISED -

STATE OF ILLINOIS
DEPARTMENT OF TRANSPORTATION

BRIDGE APPROACH SLAB DETAILS - I
LEMONT ROAD OVER DES PLAINES RIVER S.N. 016-2504
 SCALE: SHEET NO. S40 OF S41 SHEETS STA. TO STA.

F.A.U. RTE. 2612	SECTION 3104 B-1-1-2	COUNTY COOK	TOTAL SHEETS 80	SHEET NO. 76
FED. ROAD DIST. NO. ILLINOIS FED. AID PROJECT		CONTRACT NO. 60D76		