

F.A.P. RTE.	SECTION	COUNTY	TOTAL SHEETS	SHEET NO.
391	1616 VB-I	COOK	7	1
FED. ROAD DIST. NO. 1		ILLINOIS	CONTRACT NO. 60D78	

STATE OF ILLINOIS
DEPARTMENT OF TRANSPORTATION
DIVISION OF HIGHWAYS

PROPOSED
HIGHWAY PLANS
F.A.P. 391 / 39TH STREET (PERSHING RD.)

SECTION: 1616 VB-I
OVER SOUTH RACINE AVE., & N&S RAILROAD (1.3 MI W OF I-94)
BRIDGE DECK REPAIRS
PROJECT: ESP-0391 (026)
COOK COUNTY
C-91-097-08

FOR INDEX OF SHEETS, SEE SHEET NO. 2

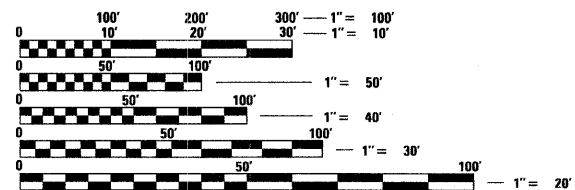
DESIGN DESIGNATION: OTHER PRINCIPAL ARTERIAL
DESIGN SPEED : 35 M.P.H.
2006 ADT = 8,500
2021 ADT = 14,175

MUNICIPALITY INVOLVED:
CITY OF CHICAGO

END PROJECT:
STA. 36 + 63.50

LOCATION:
39TH STREET (PERSHING RD.)
OVER S. RACINE AVE.
S.N. 016-0396

START PROJECT:
STA. 29 + 83.33

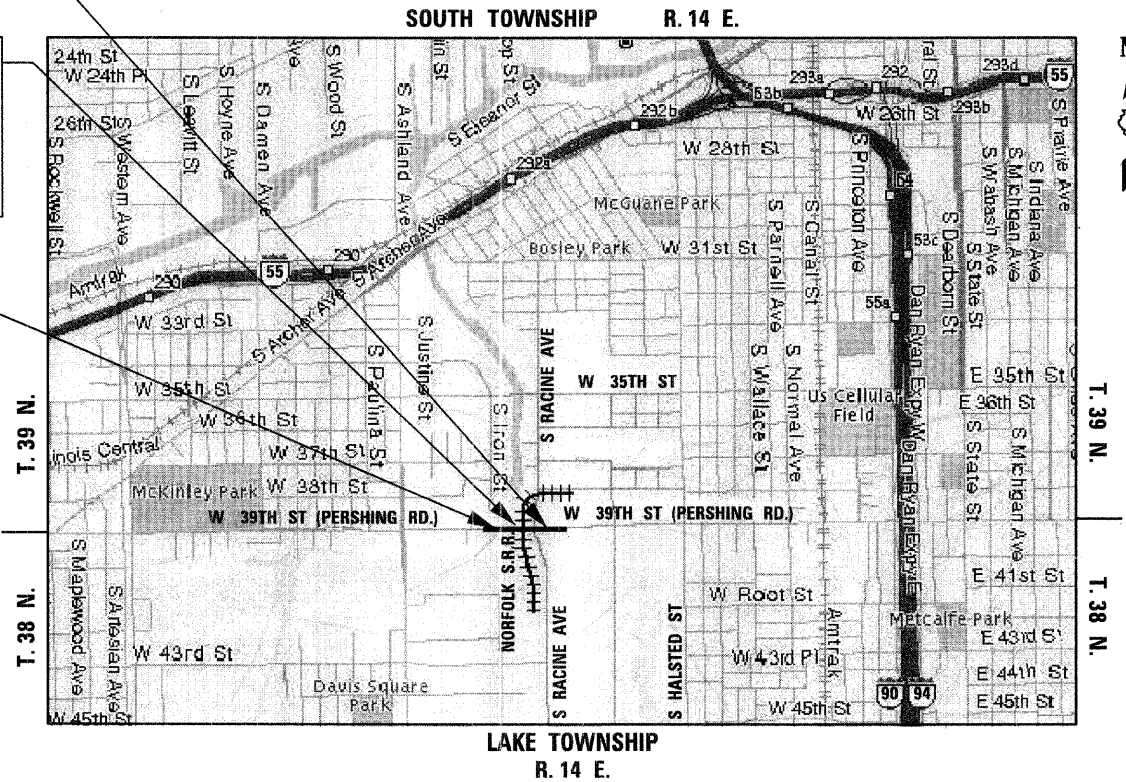


FULL SIZE PLANS HAVE BEEN PREPARED USING STANDARD ENGINEERING SCALES. REDUCED SIZED PLANS WILL NOT CONFORM TO STANDARD SCALES. IN MAKING MEASUREMENTS ON REDUCED PLANS, THE ABOVE SCALES MAY BE USED.

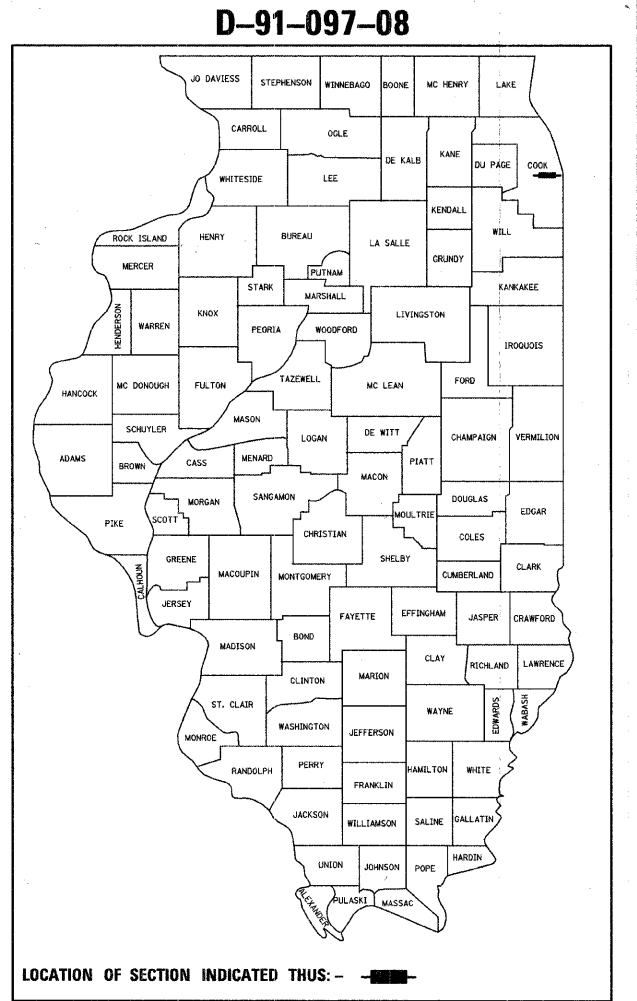
C.U.A.N.
CHICAGO UTILITY ALERT NETWORK
1-312-744-7000

DISTRICT ONE - DESIGN
PROJECT MANAGER : ISAAC KWARTENG (847) 705-4230
PROJECT ENGINEER : RON ZENAROSA (847) 705-4212

CONTRACT NO. 60D78



GROSS LENGTH OF PROJECT = 680.17 FEET = 0.129 MILES
NET LENGTH OF PROJECT = 680.17 FEET = 0.129 MILES



STATE OF ILLINOIS
DEPARTMENT OF TRANSPORTATION
DIVISION OF HIGHWAYS

SUBMITTED FEBRUARY 2, 20 09

Diana M. O'Keefe
DEPUTY DIRECTOR OF HIGHWAYS, REGION ONE ENGINEER


March 13, 20 09
Charles J. Donnell
ENGINEER OF DESIGN AND ENVIRONMENT

March 13, 20 09
Christine M. Reed
DIRECTOR OF HIGHWAYS, CHIEF ENGINEER



Bhadresh N. Shah
BHADRESH N. SHAH, S.E., P.E.
EXPIRES: 11-30-2008

FEB. 02, 2009
DATE

DESIGN SECTION ENGINEER :

CHRISTIAN-ROGE & ASSOCIATES, INC.
ENGINEERS - PLANNERS - SURVEYORS
211 W. WACKER DRIVE CHICAGO, IL. 60606
TELEPHONE: 312-372-2023

**PRINTED BY THE AUTHORITY
OF THE STATE OF ILLINOIS**

INDEX OF SHEETS

1	COVER SHEET
2	INDEX OF SHEETS, LIST OF STATE STANDARDS, CONSTRUCTION STAGING NOTES & GENERAL NOTES
3	SUMMARY OF QUANTITIES
4 - 5	STRUCTURAL DRAWINGS - 39TH STREET (PERSHING RD.) OVER SOUTH RACINE AVE.
6	TRAFFIC CONTROL AND PROTECTION FOR SIDE ROADS, INTERSECTIONS AND DRIVEWAYS
7	PERMANENT PROTECTIVE SHIELD

LIST OF STATE STANDARDS

STANDARD NO.	DESCRIPTION
000001-05	STANDARD SYMBOLS, ABBREVIATIONS AND PATTERNS
701606-00	URBAN LANE CLOSURE, MULTILANE, 2W WITH MOUNTABLE MEDIAN
701901-01	TRAFFIC CONTROL DEVICES

CONSTRUCTION STAGING TRAFFIC CONTROL NOTES

1. WORK ACTIVITIES SHALL CONSIST OF PERFORMING ALL PATCHING AND CONCRETE REPAIR ON THE OUTSIDE LANES OF W. 39TH ST. (PERSHING RD).
2. THE TRAFFIC CONTROL FOR THIS STAGE SHALL CONSIST OF THE APPLICATION OF I.D.O.T. STANDARD 701606 FOR THE CLOSURE OF THE OUTSIDE LANES. PRIOR TO LANE CLOSURE A WET REFLECTIVE TEMPORARY TAPE, TYPE III, DOUBLE YELLOW CENTERLINE SHALL BE PLACED FOR THE LENGTH OF PROJECT. IF LANE CLOSURE WILL BE TWO WEEKS OR MORE, THAN A WHITE EDGE LINE, WET REFLECTIVE TEMPORARY TAPE, SHALL BE USED ALONG THE WORK ZONE.
3. A 10' MINIMUM LANE WIDTH IN EACH DIRECTION SHALL BE PROVIDED FOR TRAFFIC DURING CONSTRUCTION.
4. TRAFFIC CONTROL FOR S. RACINE AVE. AND RAMP SHALL BE PLACED AS SHOWN ON TRAFFIC CONTROL AND PROTECTION FOR SIDE ROADS, INTERSECTIONS AND DRIVEWAYS DETAIL.
5. THE COST OF THE PLACEMENT OF ALL TRAFFIC CONTROL DEVICES REQUIRED BY THE APPROPRIATE STANDARDS AND DETAILS SHALL BE INCLUDED IN THE LUMP SUM PRICE BID FOR "TRAFFIC CONTROL AND PROTECTION STANDARD 701606".

GENERAL NOTES

1. THESE PLANS HAVE BEEN PREPARED FROM NOTES RECEIVED FROM I.D.O.T. FIELD MAINTENANCE ENGINEERS.
2. FORTY-EIGHT HOURS BEFORE STARTING EXCAVATION, THE CONTRACTOR WILL CALL C.U.A.N. (312-744-7000) TO HAVE THE LOCATION OF EXISTING UTILITIES STAKED.
3. THE CONTRACTOR WILL NOT BE ALLOWED TO SET UP A YARD OR FIELD OFFICE ON STATE PROPERTY WITHOUT WRITTEN PERMISSION FROM THE DEPARTMENT.
4. THE CONTRACTOR SHALL PROTECT EXISTING AND NEW UTILITIES AND SHALL BRACE AND SUPPORT THE UTILITIES PROPERLY IN ORDER TO PREVENT SETTLEMENT, DISPLACEMENT, OR DAMAGE TO THE UTILITIES. THE PROTECTION OF THE UTILITIES AS SPECIFIED HEREIN WILL NOT BE PAID FOR SEPARATELY, BUT SHALL BE CONSIDERED AS INCLUDED IN THE CONTRACT.
5. SAW CUTTING PRIOR TO ANY REMOVAL ITEMS NOTED ON THE PLANS OR DIRECTED BY THE ENGINEER SHALL BE CONSIDERED INCLUDED IN THE COST OF THE ITEMS BEING REMOVED.
6. DO NOT SCALE PLANS FOR CONSTRUCTION DIMENSIONS.
7. THE CONTRACTOR SHALL USE CARE IN REMOVING OR EXCAVATING NEAR ALL EXISTING ITEMS WHICH WILL REMAIN. ANY DAMAGE DONE TO EXISTING ITEMS BY THE CONTRACTOR SHALL BE REPAIRED AT THE CONTRACTOR'S EXPENSE.
8. POLLUTION CONTROL: THE CONTRACTOR SHALL BE REQUIRED TO COMPLY WITH STATE REGULATIONS REGARDING AIR, WATER AND NOISE POLLUTION.
9. THE CONTRACTOR SHALL OBTAIN ALL NECESSARY PERMITS, AS REQUIRED, PRIOR TO COMMENCING WITH CONSTRUCTION.
10. THE CONTRACTOR SHALL CONTACT THE TRAFFIC CONTROL SUPERVISOR AT (847) 705-4470 A MINIMUM OF 72 HOURS PRIOR TO THE PLACEMENT OF ANY TEMPORARY TRAFFIC CONTROL DEVICES.
11. AT LEAST TWO (2) WEEKS PRIOR TO THE PLACEMENT OF PERMANENT PAVEMENT MARKINGS, THE CONTRACTOR SHALL CONTACT THE AREA TRAFFIC FIELD ENGINEER, PATRICE HARRIS (708) 597-9800.
12. ALL PAVEMENT MARKINGS AFFECTED BY THE BRIDGE REPAIRS SHALL BE REPLACED, INCLUDING A DOUBLE YELLOW CENTER LINE. QUANTITIES HAVE BEEN INCLUDED IN THE CONTRACT FOR THIS WORK.
13. PLAN DIMENSIONS AND DETAILS RELATIVE TO EXISTING PLANS ARE SUBJECT TO ROUTINE VARIATIONS. THE CONTRACTOR SHALL FIELD VERIFY EXISTING DIMENSIONS AND DETAILS AFFECTING NEW CONSTRUCTION AND MAKE NECESSARY APPROVED ADJUSTMENTS PRIOR TO CONSTRUCTION BEFORE ORDERING OF MATERIALS. SUCH VARIATIONS SHALL NOT BE CAUSE FOR ADDITIONAL COMPENSATION FOR A CHANGE IN SCOPE OF WORK. HOWEVER, THE CONTRACTOR WILL BE PAID FOR THE QUANTITY ACTUALLY FURNISHED BASED UPON THE UNIT BID FOR THE WORK.

FILE NAME = 60078 index.dgn
PLOT DATE = 2/3/2009



CHRISTIAN-ROGE & ASSOCIATES, INC.
ENGINEERS-PLANNERS-SURVEYORS
211 WEST WACKER DRIVE
CHICAGO, ILLINOIS 60606
PHONE: (312)372-2023 FAX: (312)372-5274

DESIGNED - S.J.P.	REVISED -
DRAWN - A.C.S / M.A.	REVISED -
CHECKED - E.J.M.	REVISED -
DATE - FEBRUARY 2, 2009	REVISED -

**STATE OF ILLINOIS
DEPARTMENT OF TRANSPORTATION**

**INDEX OF SHEETS, LIST OF STATE STANDARDS,
CONSTRUCTION STAGING NOTES & GENERAL NOTES**

SCALE: NONE SHEET NO. 1 OF 1 SHEETS STA. TO STA.

F.A.P. RTE.	SECTION	COUNTY	TOTAL SHEETS	SHEET NO.
391	1616 VB-I	COOK	7	2
				CONTRACT NO. 60078
FED. ROAD DIST. NO. 1 ILLINOIS FED. AID PROJECT				

SUMMARY OF QUANTITIES			URBAN 100% FED.	CONSTRUCTION TYPE CODE
CODE NO	ITEM	UNIT	TOTAL QUANTITIES	39th ST. BRIDGE SFTY-2A
67100100	MOBILIZATION	L SUM	1	1
70102625	TRAFFIC CONTROL AND PROTECTION, STANDARD 701606	L SUM	1	1
70103815	TRAFFIC CONTROL SURVEILLANCE	CAL DA	10	10
* 78008210	POLYUREA PAVEMENT MARKING TYPE I - LINE 4"	FOOT	1,700	1,700
50157301	PROTECTIVE SHIELD (PERMANENT)	SQ YD	240	240
X0322467	TEMPORARY INFORMATION SIGNING FOR LANE CLOSURE	SQ FT	51	51
X0325775	WET REFLECTIVE TEMPORARY TAPE, TYPE III, 4 INCH	FOOT	5,020	5,020
Z0016002	DECK SLAB REPAIR (FULL DEPTH, TYPE II)	SQ YD	492	492
Z0048665	RAILROAD PROTECTIVE LIABILITY INSURANCE	L SUM	1	1

* SPECIALTY ITEM

FILE NAME = 60078 summary.dgn
PLOT DATE = 2/3/2009



CHRISTIAN-ROGE & ASSOCIATES, INC.
ENGINEERS-PLANNERS-SURVEYORS
211 WEST WACKER DRIVE
CHICAGO, ILLINOIS 60606
PHONE: (312)372-2023 FAX: (312)372-5274

DESIGNED - S.J.P.
DRAWN - A.C.S / M.A.
CHECKED - E.J.M.
DATE - FEBRUARY 2, 2009

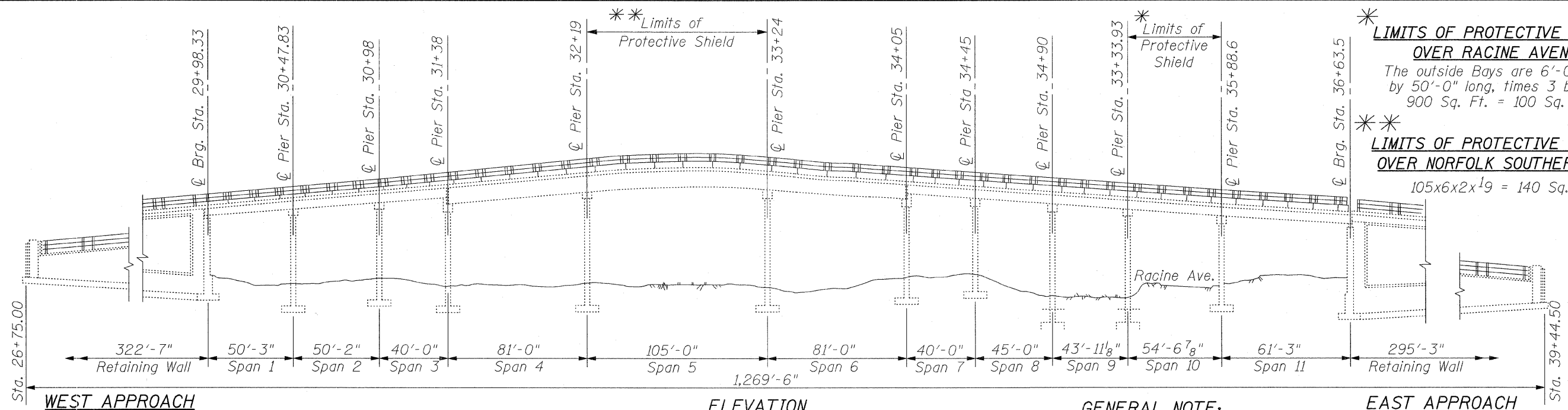
REVISED -
REVISED -
REVISED -
REVISED -

STATE OF ILLINOIS
DEPARTMENT OF TRANSPORTATION

SUMMARY OF QUANTITIES
39TH STREET (PERSHING RD.)

SCALE: NONE SHEET NO. 1 OF 1 SHEETS STA. TO STA.

F.A.P. RTE. 391	SECTION 1616 VB-1	COUNTY COOK	TOTAL SHEETS 7	SHEET NO. 3
CONTRACT NO. 60D78				Rev.
FED. ROAD DIST. NO. 1 ILLINOIS FED. AID PROJECT				



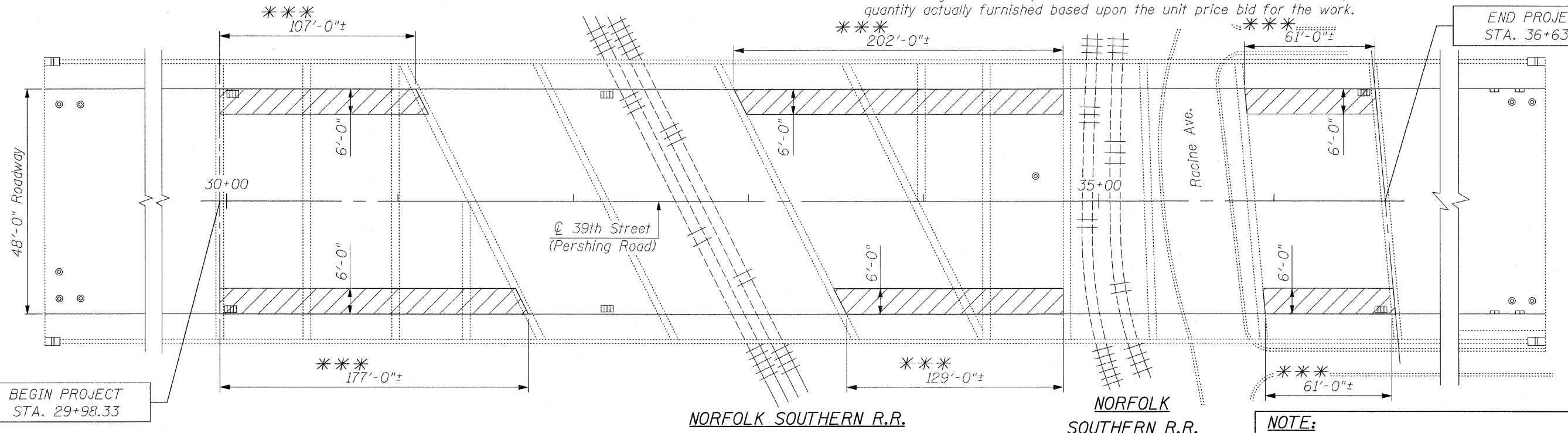
LIMITS OF PROTECTIVE SHIELD OVER RACINE AVENUE
 The outside Bays are 6'-0" wide by 50'-0" long, times 3 bays = 900 Sq. Ft. = 100 Sq. Yd.

LIMITS OF PROTECTIVE SHIELD OVER NORFOLK SOUTHERN R.R.
 105x6x2x19 = 140 Sq. Yd.

WEST APPROACH **ELEVATION** **GENERAL NOTE:** **EAST APPROACH**

LEGEND:
 *** Deck Slab Repair (Full Depth, Type II)

Plan dimensions and details relative to existing plans are subject to routine variations. The Contractor shall field verify existing dimensions and details affecting new construction and make necessary approved adjustments prior to construction or ordering of materials. Such variations shall not be cause for additional compensation for a change in the scope of work, however, the Contractor will be paid for the quantity actually furnished based upon the unit price bid for the work.



BEGIN PROJECT STA. 29+98.33

END PROJECT STA. 36+63.50

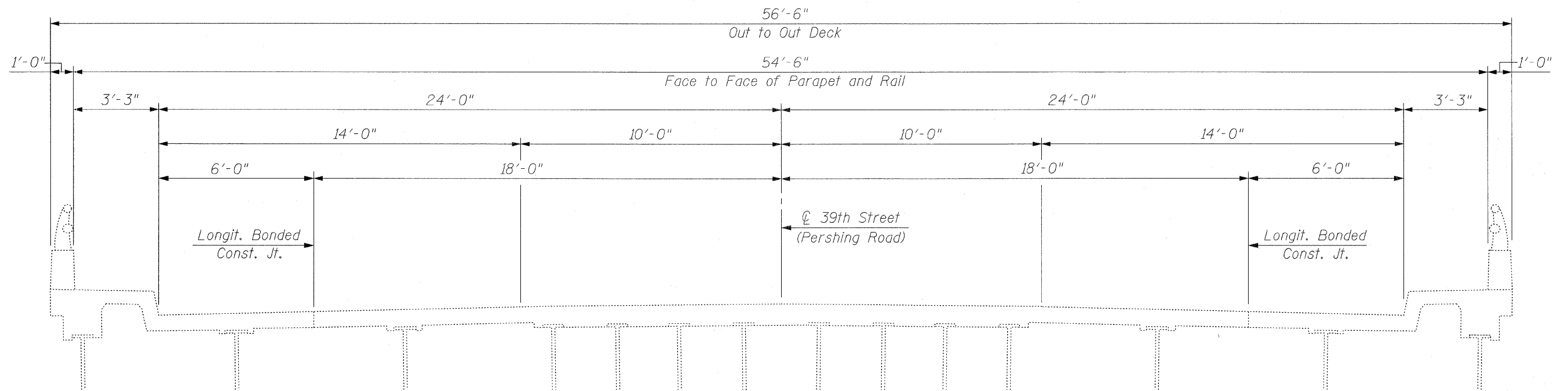
*** Perform full depth repair in stages. Patches shall be 12'x6' maximum with a minimum of 12' of existing Concrete deck between patches. After new Concrete is poured work cannot begin in an adjacent section until both of the following requirements are met:
 1. At least 72 hours shall have elapsed from the end of the previous pour on either end.
 2. The new Concrete on either end shall obtained a modulus of rupture of 650 psi or a minimum compressive strength of 3,500 psi.

NOTE:
 Inspection was conducted on September 28, 2007 by I.D.O.T. Field Maintenance Engineers

TOTAL BILL OF MATERIAL

ITEM	UNIT	QUANTITY
Deck Slab Repair (Full Depth, Type II)	Sq. Yd.	492
Protective Shield (Permanent)	Sq. Yd.	240

CR & A CHRISTIAN-ROGE & ASSOCIATES, INC.
 ENGINEERS / PLANNERS / SURVEYORS
 211 W. WACKER DRIVE CHICAGO, IL 60606
 PHONE: (312)372-2023 FAX: (312)372-5274

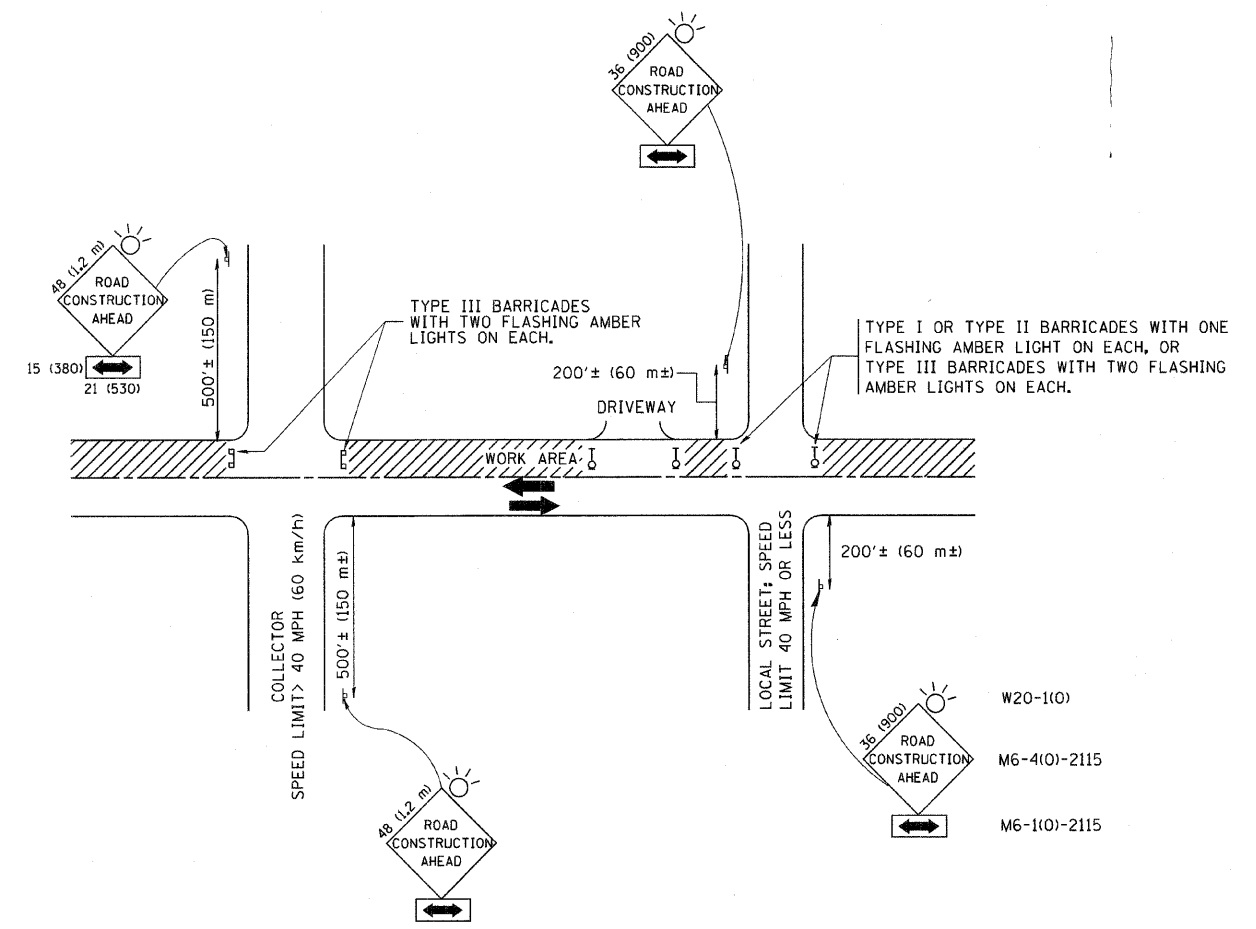


EXISTING DECK CROSS SECTION
(Looking East)

FOR INFORMATION ONLY

CR & A
 CHRISTIAN-ROGE & ASSOCIATES, INC.
 ENGINEERS / PLANNERS / SURVEYORS
 211 W. WACKER DRIVE CHICAGO, IL 60606
 PHONE: (312)372-2023 FAX: (312)372-5274

FILE NAME = deck.cross-section.sht	USER NAME = IDOT	DESIGNED - B.N.S.	REVISED -	STATE OF ILLINOIS DEPARTMENT OF TRANSPORTATION	DECK CROSS SECTION 39TH STREET (PERSHING ROAD) OVER SOUTH RACINE AVENUE		F.A.P. RTE. 391	SECTION 1616 VB-I	COUNTY COOK	TOTAL SHEETS 7	SHEET NO. 5	
	PLOT SCALE = 50.0000' / IN.	DRAWN - D.L. / F.M.	REVISED -		SCALE:	SHEET NO. SXX OF SXX SHEETS	STA.	TO STA.	S.N. 016-0396 CONTRACT NO. 60D78			
	PLOT DATE = 2/3/2009	CHECKED - B.N.S.	REVISED -		FED. ROAD DIST. NO.	ILLINOIS FED. AID PROJECT						
		DATE - FEB. 2, 2009	REVISED -									



TRAFFIC CONTROL AND PROTECTION FOR SIDE ROADS, INTERSECTIONS, AND DRIVEWAYS

NOTES:

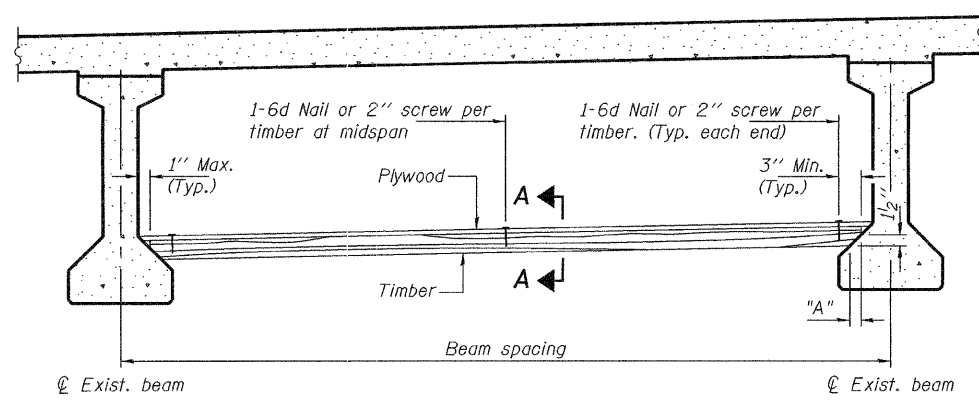
- A. FOR NO LANE RESTRICTION ON THE SIDE ROAD OR DRIVEWAYS
- SIDE ROAD WITH A SPEED LIMIT OF 40 MPH (60 km/h) OR LESS AS SHOWN ON THE DRAWING AND AS DIRECTED BY THE ENGINEER:
 - ONE ROAD CONSTRUCTION AHEAD SIGN 36 x 36 (900x900) WITH A FLASHER AND FLAG MOUNTED ON IT APPROXIMATELY 200' (60 m) IN ADVANCE OF THE MAIN ROUTE.
 - THE CLOSED PORTION OF THE MAIN ROUTE SHALL BE PROTECTED BY BLOCKING WITH TYPE I, TYPE II OR TYPE III BARRICADES, 1/3 OF THE CROSS SECTION OF THE CLOSED PORTION.
 - SIDE ROAD WITH A SPEED LIMIT GREATER THAN 40 MPH (60 km/h) AS SHOWN ON THE DRAWING AND AS DIRECTED BY THE ENGINEER:
 - ONE ROAD CONSTRUCTION AHEAD SIGN 48 x 48 (1.2 m x 1.2 m) WITH A FLASHER MOUNTED ON IT APPROXIMATELY 500' (150 m) IN ADVANCE OF THE MAIN ROUTE.
 - THE CLOSED PORTION OF THE MAIN ROUTE SHALL BE PROTECTED BY BLOCKING WITH TYPE III BARRICADES, 1/2 OF THE CROSS SECTION OF THE CLOSED PORTION.
3. WHEN THE SIDE ROAD LIES BETWEEN THE BEGINNING OF THE MAINLINE SIGNING AND THE WORK ZONE, A SINGLE HEADED ARROW (M6-1) SHALL BE USED IN LIEU OF THE DOUBLE HEADED ARROW (M6-4).
- B. FOR A LANE CLOSURE ON A SIDE ROAD OR DRIVEWAY:
- USE APPLICABLE PORTIONS OF THE TYPICAL APPLICATION OF TRAFFIC CONTROL DEVICES (STD. 701501, STD. 701606 OR THE APPROPRIATE STANDARD). THE SPACING OF SIGNS AND BARRICADES SHALL BE ADJUSTED FOR FIELD CONDITIONS AS DIRECTED BY THE ENGINEER. THE DIRECTIONAL ARROW SHALL BE COVERED OR REMOVED WHEN NO LONGER CONSISTENT WITH THE SIDE ROAD LANE CLOSURE.
- C. ADVANCE WARNING SIGNS ARE TO BE OMITTED ON DRIVEWAY UNLESS OTHERWISE NOTED.
- D. THE TRAFFIC CONTROL AND PROTECTION FOR SIDE ROADS, INTERSECTIONS, AND DRIVEWAYS SHALL BE INCIDENTAL TO THE COST OF SPECIFIED TRAFFIC CONTROL STANDARDS OR ITEMS.

All dimensions are in millimeters (inches) unless otherwise shown.

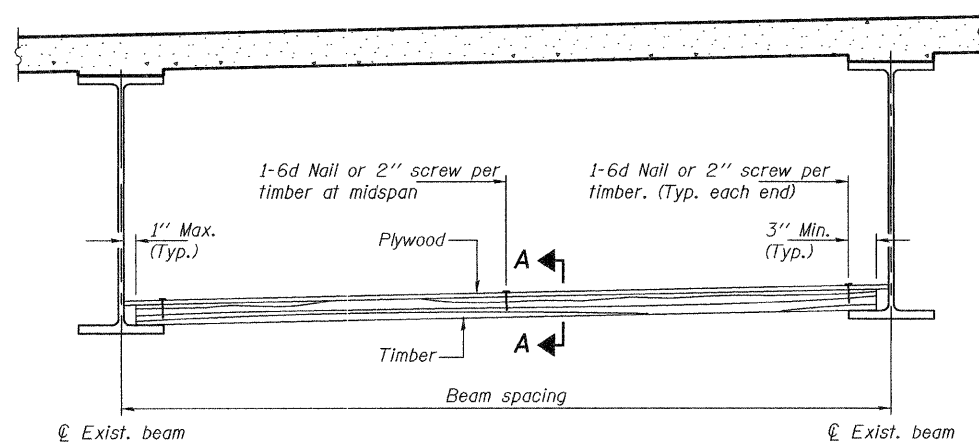
FILE NAME = W:\diststd\22x34\to10.dgn	USER NAME = gaglianobt	DESIGNED - LHA	REVISED - J. OBERLE 10-18-95	STATE OF ILLINOIS DEPARTMENT OF TRANSPORTATION	TRAFFIC CONTROL AND PROTECTION FOR SIDE ROADS, INTERSECTIONS, AND DRIVEWAYS			F.A.P. RTE.	SECTION	COUNTY	TOTAL SHEETS	SHEET NO.
	PLOT SCALE = 50.000' / IN.	DRAWN -	REVISED - A. HOUSEH 03-06-96		391	1616 VB-1	COOK	7	6			
	PLOT DATE = 1/4/2008	CHECKED -	REVISED - A. HOUSEH 10-15-96		TC-10			CONTRACT NO. 60D78				
	DATE - 06-89	REVISED - T. RAMMACHER 01-06-00		SCALE: NONE	SHEET NO. 1 OF 1 SHEETS	STA.	TO STA.	FED. ROAD DIST. NO. 1 ILLINOIS FED. AID PROJECT				

STATE OF ILLINOIS
DEPARTMENT OF TRANSPORTATION

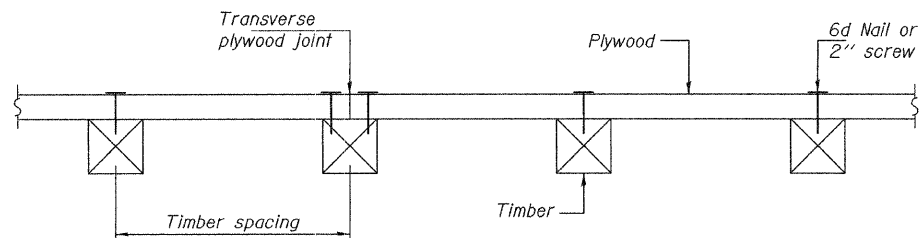
ROUTE NO.	SECTION	COUNTY	TOTAL SHEETS	SHEET NO.
FAP 391	J616 VB-1	COOK	7	7
FED. ROAD DIST. NO. 7		ILLINOIS	FED. AID PROJECT	
Contract Number: 60078				



PPC I-BEAMS AND BULB-T'S



STEEL BEAMS



SECTION A-A

TIMBER SPACING

Beam Spacing (ft.)	Timber Sizes (in.)		
	4" x 4" with min. Fb=775 psi Fv=135 psi	4" x 6" with min. Fb=775 psi Fv=135 psi	6" x 6" with min. Fb=575 psi Fv=125 psi
	Maximum Timber Spacing (in.)		
4.5	16	16	16
4.75	16	16	16
5.0	16	16	16
5.25	16	16	16
5.5	16	16	16
5.75	16	16	16
6.0	16	16	16
6.25	12	16	16
6.5	12	16	16
6.75	12	16	16
7.0	8	16	16
7.25	8	16	16
7.5	8	16	16
7.75	8	16	16
8.0	8	12	16
8.25	8	12	16
8.5	6	12	12
8.75	6	12	12
9.0	6	8	12

PPC I-BEAMS AND BULB-T'S

BEAM	"A"
36" I-Beam	1 1/2"
42" I-Beam	1 1/2"
48" I-Beam	1 1/2"
54" I-Beam	1 5/8"
63" Bulb-T	3 3/8"
72" Bulb-T	3 3/8"

Notes: See special provision for Permanent Protective Shield System.
Timber sizes shown are nominal sizes. Rough sawn timber of the dimensions shown will also be considered acceptable.
The minimum Fb and Fv values shown are the tabulated design values given in the National Design Specification for Wood Construction for No. 2 Spruce-Pine-Fir without adjustment factors applied. Better grades or other species with equal or higher allowable stresses will also be considered acceptable.
The timber spacings shown have been determined using allowable stresses with all adjustment factors necessary for the anticipated service conditions.
All timber shall be treated.
Plywood shall be 5/8" rated Exterior type plywood by APA.
Plywood shall be placed such that the face grain is perpendicular to the timber supports. When less than a full sheet (4' width) of plywood is used, the width of the strip used shall not be less than 2'.
Transverse plywood joints shall be supported by timbers.
When 4" x 6" timbers are used, they shall be placed such that the wide face is horizontal and the narrow face is vertical.
Design load = 200 psf.

BILL OF MATERIAL

Item	Unit	Total
Protective Shield (Permanent)	Sq. Yd.	240

PERMANENT PROTECTIVE SHIELD