

F.A.P. RTE.	SECTION	COUNTY	TOTAL SHEETS	SHEET NO.
330	17 B-2-1-1	WILL	21	1
FED. ROAD DIST. NO. 1	ILLINOIS	CONTRACT NO. 60D79		

STATE OF ILLINOIS  
DEPARTMENT OF TRANSPORTATION  
DIVISION OF HIGHWAYS

**PROPOSED  
HIGHWAY PLANS**

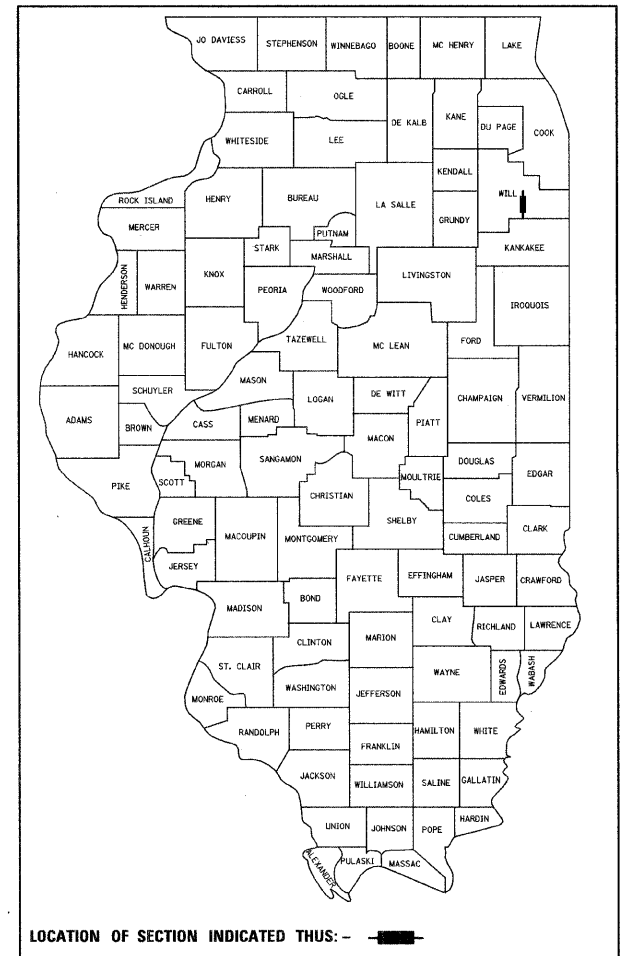
F.A.P. 330 / U.S. 45 / 52  
SECTION: 17 B-2-1-1  
OVER SOUTH BRANCH FORKED CREEK  
BRIDGE DECK OVERLAY  
PROJECT: *ESP-0330(051)*  
WILL COUNTY  
C-91-086-08

FOR INDEX OF SHEETS, SEE SHEET NO. 2

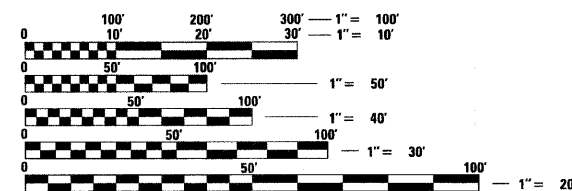
**DESIGN DESIGNATION:**  
OTHER PRINCIPAL ARTERIAL  
POSTED SPEED: 55 M.P.H.  
2005 ADT = 6,600  
2021 ADT = 7,290

PROJECT LOCATED IN  
WILL COUNTY

D-91-086-08



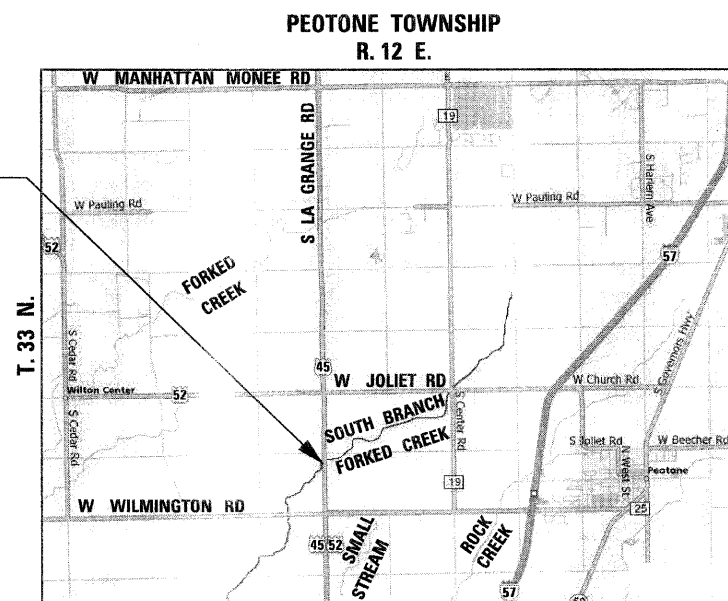
DISTRICT ONE — DESIGN PROJECT MANAGER: ISAAC KWARTENG (847) 705-4230



FULL SIZE PLANS HAVE BEEN PREPARED USING STANDARD ENGINEERING SCALES. REDUCED SIZED PLANS WILL NOT CONFORM TO STANDARD SCALES. IN MAKING MEASUREMENTS ON REDUCED PLANS, THE ABOVE SCALES MAY BE USED.

J.U.L.I.E.  
JOINT UTILITY LOCATING INFORMATION FOR EXCAVATORS  
1-800-892-0123  
OR 811

PROJECT LOCATION:  
U.S. 45 / 52 OVER  
SOUTH BRANCH  
FORKED CREEK  
S.N. 099-0121



GROSS LENGTH OF PROJECT = 136.83 FEET = 0.026 MILES  
NET LENGTH OF PROJECT = 136.83 FEET = 0.026 MILES

STATE OF ILLINOIS  
DEPARTMENT OF TRANSPORTATION  
DIVISION OF HIGHWAYS

SUBMITTED JANUARY 8, 2009

*Diana M. O'Keefe*  
DEPUTY DIRECTOR OF HIGHWAYS, REGION ONE ENGINEER

March 13, 2009  
*Charles J. Sorensen*  
ENGINEER OF DESIGN AND ENVIRONMENT

March 13, 2009  
*Christine M. Reed*  
DIRECTOR OF HIGHWAYS, CHIEF ENGINEER



*Birinder S. Sachdeva* January 06, 2009  
BIRINDER S. SACHDEVA, P.E. DATE  
EXPIRES: 11-30-2009

*Bhadresh N. Shah* JAN. 09, 2009  
BHADRESH N. SHAH, S.E., P.E. DATE  
EXPIRES: 11-30-2010

**CR & A**  
CHRISTIAN-ROGE & ASSOCIATES, INC.  
ENGINEERS - PLANNERS - SURVEYORS  
211 W. WACKER DRIVE CHICAGO, IL 60606  
TELEPHONE: 312-372-2023

**PRINTED BY THE AUTHORITY  
OF THE STATE OF ILLINOIS**

CONTRACT NO. 60D79

**INDEX OF SHEETS**

1	COVER SHEET
2	INDEX OF SHEETS, LIST OF STATE STANDARDS AND GENERAL NOTES U.S. 45 / 52
3	SUMMARY OF QUANTITIES U.S. 45 / 52
4	TYPICAL SECTIONS AND DETAILS U.S. 45 / 52
5	ALIGNMENT, TIES AND PAVEMENT MARKINGS U.S. 45 / 52
6	EXISTING CONDITIONS AND PROPOSED PLAN AND PROFILE U.S. 45 / 52
7	CONSTRUCTION STAGING AND MAINTENANCE OF TRAFFIC NOTES AND DETAILS U.S. 45 / 52
8	SUGGESTED TRAFFIC CONTROL AND STAGING PLAN U.S. 45 / 52
9 - 10	TEMPORARY LIGHTING PLANS U.S. 45 / 52
11 - 16	STRUCTURAL DRAWINGS - U.S. 45 / 52 OVER SOUTH BRANCH FORKED CREEK
17	BUTT JOINT AND HMA TAPER DETAILS
18	TEMPORARY LIGHT POLE DETAILS
19	TEMPORARY AERIAL CABLE INSTALLATION
20	TYPICAL APPLICATIONS RAISED REFLECTIVE PAVEMENT MARKERS (SNOW-PLOW RESISTANT)
21	DISTRICT ONE TYPICAL PAVEMENT MARKINGS

**LIST OF STATE STANDARDS**

STANDARD NO.	DESCRIPTION
000001-05	STANDARD SYMBOLS, ABBREVIATIONS AND PATTERNS
701201-03	LANE CLOSURE, 2L, 2W, DAY ONLY, FOR SPEEDS > 45 MPH
701316-04	LANE CLOSURE, 2L, 2W, BRIDGE REPAIR, FOR SPEEDS > 45 MPH
701901-01	TRAFFIC CONTROL DEVICES
880001-01	SPAN WIRE MOUNTED SIGNALS AND FLASHING BEACON INSTALLATION

**GENERAL NOTES**

1. THESE PLANS HAVE BEEN PREPARED FROM NOTES RECEIVED FROM IDOT FIELD MAINTENANCE ENGINEERS.
2. PLAN DIMENSIONS AND DETAILS RELATIVE TO EXISTING PLANS ARE SUBJECT TO ROUTINE VARIATIONS. THE CONTRACTOR SHALL FIELD VERIFY EXISTING DIMENSIONS AND DETAILS AFFECTING NEW CONSTRUCTION AND MAKE NECESSARY APPROVED ADJUSTMENTS PRIOR TO CONSTRUCTION OR ORDERING MATERIALS. SUCH VARIATIONS SHALL NOT BE CAUSE FOR ADDITIONAL COMPENSATION FOR A CHANGE IN THE SCOPE OF THE WORK, HOWEVER, THE CONTRACTOR WILL BE PAID FOR THE QUANTITY ACTUALLY FURNISHED BASED UPON THE UNIT PRICE.
3. FORTY-EIGHT HOURS BEFORE STARTING EXCAVATION, THE CONTRACTOR WILL CALL J.U.L.I.E. (1-800-892-0123) OR 811 TO HAVE THE LOCATION OF EXISTING UTILITIES STAKED.
4. THE CONTRACTOR WILL NOT BE ALLOWED TO SET UP A YARD OR FIELD OFFICE ON STATE PROPERTY WITHOUT WRITTEN PERMISSION FROM THE DEPARTMENT.
5. SAW CUTTING PRIOR TO ANY REMOVAL ITEMS NOTED ON THE PLANS OR DIRECTED BY THE ENGINEER SHALL BE CONSIDERED INCLUDED IN THE COST OF THE ITEMS BEING REMOVED.
6. DO NOT SCALE PLANS FOR CONSTRUCTION DIMENSIONS.
7. THE CONTRACTOR SHALL USE CARE IN REMOVING OR EXCAVATING NEAR ALL EXISTING ITEMS WHICH WILL REMAIN. ANY DAMAGE DONE TO EXISTING ITEMS BY THE CONTRACTOR SHALL BE REPAIRED AT THE CONTRACTOR'S EXPENSE.
8. WHEN ARTIFICIAL LIGHTING IS UTILIZED IN NIGHT OPERATIONS, THE CONTRACTOR SHALL EXERCISE THE UTMOST PRECAUTIONS IN PREVENTING ADVERSE VISIBILITY TO THE MOTORING PUBLIC AS WELL AS ADJOINING RESIDENTIAL AREAS.
9. THE CONTRACTOR SHALL OBTAIN ALL NECESSARY PERMITS, AS REQUIRED, PRIOR TO COMMENCING WITH CONSTRUCTION.
10. THE CONTRACTOR SHALL TAKE ALL NECESSARY MEASURES TO ASSURE THAT NO DEBRIS FALLS IN THE CREEK. THE COST OF THIS WORK SHALL BE INCLUDED IN THE VARIOUS PAY ITEMS.
11. THE CONTRACTOR SHALL CONTACT THE TRAFFIC CONTROL SUPERVISOR AT (847) 705-4470 A MINIMUM OF 72 HOURS PRIOR TO THE PLACEMENT OF ANY TEMPORARY TRAFFIC CONTROL DEVICES.
12. THE CONTRACTOR SHALL CONTACT CORA MATHIS, THE AREA TRAFFIC FIELD ENGINEER, AT (815) 485-6475 TWO (2) WEEKS PRIOR TO THE PLACEMENT OF PERMANENT PAVEMENT MARKINGS.
13. ALL DAMAGE TO EXISTING PAVEMENT MARKINGS OUTSIDE THE REMOVAL LINE SHOWN ON THE PLANS SHALL BE REPLACED AT THE CONTRACTOR'S EXPENSE.

NOTE: BOXED ITEMS ARE INCLUDED IN THE COST OF THE WORK INVOLVED.

FILE NAME = 60079 index.dgn  
 PLOT DATE = 1/12/2009



**CHRISTIAN-ROGE & ASSOCIATES, INC.**  
 ENGINEERS-PLANNERS-SURVEYORS  
 211 WEST WACKER DRIVE  
 CHICAGO, ILLINOIS 60606  
 PHONE: (312)372-2023 FAX: (312)372-5274

DESIGNED - S.J.P.	REVISED -
DRAWN - A.C.S.	REVISED -
CHECKED - E.J.M.	REVISED -
DATE - JANUARY 12, 2009	REVISED -

**STATE OF ILLINOIS  
 DEPARTMENT OF TRANSPORTATION**

**INDEX OF SHEETS, LIST OF STATE STANDARDS AND GENERAL NOTES  
 U.S. 45 / 52**

SCALE: NONE SHEET NO. 1 OF 1 SHEETS STA. 755+65.58 TO STA. 757+02.41

F.A.P. RTE.	SECTION	COUNTY	TOTAL SHEETS	SHEET NO.
330	17 B-2-I-1	WILL	21	2
			CONTRACT NO. 60D79	

FED. ROAD DIST. NO. 1 ILLINOIS FED. AID PROJECT

100% FED.

SUMMARY OF QUANTITIES			URBAN TOTAL QUANTITIES	CONSTRUCTION TYPE CODE	
CODE NO	ITEM	UNIT		U.S. 45 / 52 BRIDGE SFTY-2A	
40300200	BITUMINOUS MATERIALS (PRIME COAT)	TON	1	1	
40600300	AGGREGATE (PRIME COAT)	TON	1	1	
40600625	LEVELING BINDER (MACHINE METHOD), N50	TON	23	23	
40600982	HOT-MIX ASPHALT SURFACE REMOVAL - BUTT JOINT	SQ YD	44	44	
40600990	TEMPORARY RAMP	SQ YD	30	30	
40603335	HOT-MIX ASPHALT SURFACE COURSE, MIX "D", N50	TON	34	34	
42001300	PROTECTIVE COAT	SQ YD	293	293	
44000155	HOT-MIX ASPHALT SURFACE REMOVAL, 1 1/2"	SQ YD	352	352	
50300260	BRIDGE DECK GROOVING	SQ YD	283	283	
67000400	ENGINEER'S FIELD OFFICE, TYPE A	CAL MO	3	3	
67100100	MOBILIZATION	L SUM	1	1	
70101800	TRAFFIC CONTROL AND PROTECTION, (SPECIAL)	L SUM	1	1	
70106700	TEMPORARY RUMBLE STRIP	EACH	6	6	
* 78008210	POLYUREA PAVEMENT MARKING TYPE I - LINE 4"	FOOT	416	416	
* 78100100	RAISED REFLECTIVE PAVEMENT MARKER	EACH	2	2	
78300100	PAVEMENT MARKING REMOVAL	SQ FT	40	40	
78300200	RAISED REFLECTIVE PAVEMENT MARKER REMOVAL	EACH	2	2	

\* SPECIALTY ITEM

100% FED.

SUMMARY OF QUANTITIES			URBAN TOTAL QUANTITIES	CONSTRUCTION TYPE CODE	
CODE NO	ITEM	UNIT		U.S. 45 / 52 BRIDGE SFTY-2A	
80400100	ELECTRIC SERVICE INSTALLATION	EACH	1	1	
80400200	ELECTRIC UTILITY SERVICE CONNECTION	L SUM	1	1	
* 81800320	AERIAL CABLE, 3-1/C NO. 4 WITH MESSENGER WIRE	FOOT	1,050	1,050	
* 82103400	LUMINAIRE, SODIUM VAPOR, HORIZONTAL MOUNT, PHOTO-CELL CONTROL, 400 WATT	EACH	6	6	
* 83057355	LIGHT POLE, WOOD, 60 FOOT, CLASS 4, WITH 15 FT MAST ARM	EACH	6	6	
* 84100110	REMOVAL OF TEMPORARY LIGHTING UNITS	EACH	6	6	
X0322185	BRIDGE DECK LATEX CONCRETE OVERLAY, 2 1/4 INCHES	SQ YD	293	293	
X0322467	TEMPORARY INFORMATION SIGNING FOR LANE CLOSURE	SQ FT	48	48	
X0323574	MAINTENANCE OF LIGHTING SYSTEM	CAL MO	3	3	
X0325305	STRUCTURAL REPAIR OF CONCRETE (DEPTH EQUAL TO OR LESS THAN 5 INCHES)	SQ FT	125	125	
X0325775	WET REFLECTIVE TEMPORARY TAPE, TYPE III, 4 INCH	FOOT	1,340	1,340	
* X0325867	COMBINATION POLE MOUNTED ELECTRIC SERVICE BOX	EACH	1	1	
X8900005	TEMPORARY BRIDGE TRAFFIC SIGNAL INSTALLATION	EACH	1	1	
* XX006937	GROUND ROD, 5/8" DIA. x 10 FT.	EACH	1	1	
Z0006204	BRIDGE DECK HYDRO-SCARIFICATION 1/2"	SQ YD	293	293	
Z0013798	CONSTRUCTION LAYOUT	L SUM	1	1	
Z0016002	DECK SLAB REPAIR (FULL DEPTH, TYPE II)	SQ YD	15	15	
* X0326135	ELECTRIC SERVICE DISCONNECT, LIGHTING AND TRAFFIC SIGNAL	EACH	1	1	

\* SPECIALTY ITEM

FILE NAME = 60D79 S00.dgn  
PLOT DATE = 1/12/2009



CHRISTIAN-ROGE & ASSOCIATES, INC.  
ENGINEERS-PLANNERS-SURVEYORS  
211 WEST WACKER DRIVE  
CHICAGO, ILLINOIS 60606  
PHONE: (312)372-2023 FAX: (312)372-5274

DESIGNED -	S.J.P.	REVISED -	
DRAWN -	A.C.S.	REVISED -	
CHECKED -	E.J.M.	REVISED -	
DATE	JANUARY 12, 2009	REVISED -	

STATE OF ILLINOIS  
DEPARTMENT OF TRANSPORTATION

SUMMARY OF QUANTITIES  
U.S. 45 / 52

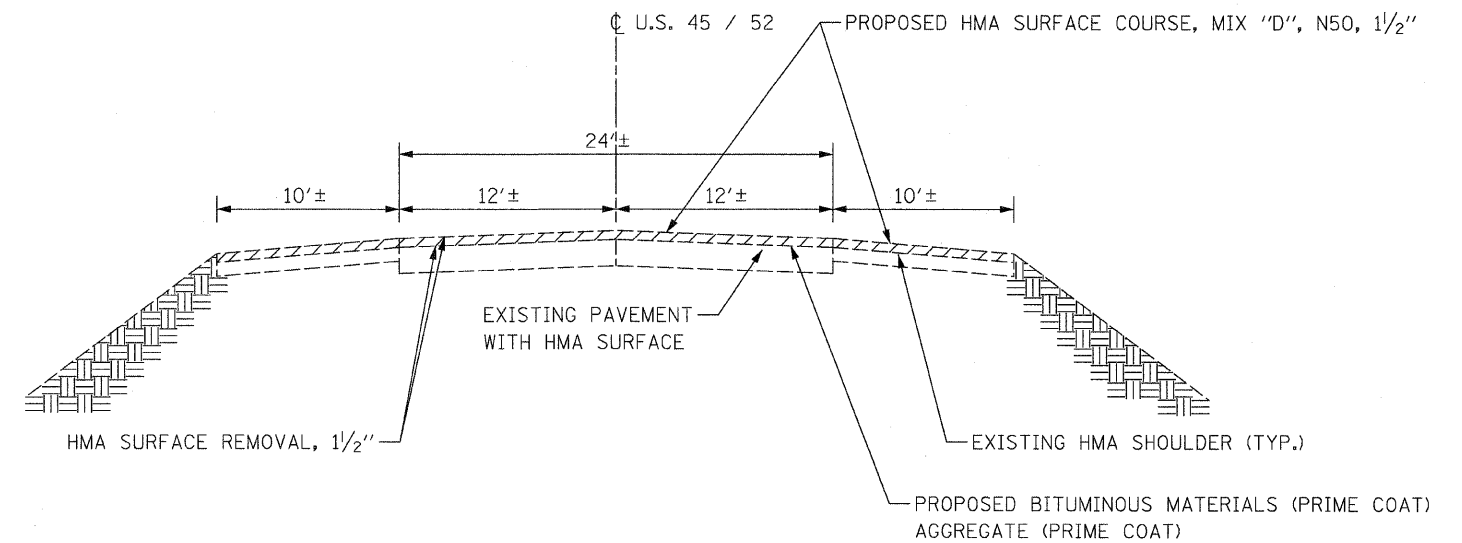
SCALE: NONE SHEET NO. 1 OF SHEETS STA. 755+65.50 TO STA. 757+02.41

F.A.P. RTE.	SECTION	COUNTY	TOTAL SHEETS	SHEET NO.
330	17 B-2-1-1	WILL	21	3
			CONTRACT NO. 60D79	

HOT-MIX ASPHALT MIXTURE REQUIREMENTS		
MIXTURE TYPE	AC TYPE	AIR VOIDS
<b>PAVEMENT RESURFACING</b>		
HOT-MIX ASPHALT SURFACE COURSE, MIX "D", N50 (IL 9.5 mm)	PG 64-22	4% @ 50 Gyr.
LEVELING BINDER (MACHINE METHOD), N50 (IL 9.5 mm)	*PG 64-22	4% @ 50 Gyr.
<b>TEMPORARY RAMP</b>		
HOT-MIX ASPHALT BINDER COURSE, IL-19.0, N50; 0"-3/2"	*PG 64-22	4% @ 50 Gyr.

THE UNIT WEIGHT USED TO CALCULATE HMA MIXTURE QUANTITIES IS 112 LBS/SQ YD/IN.

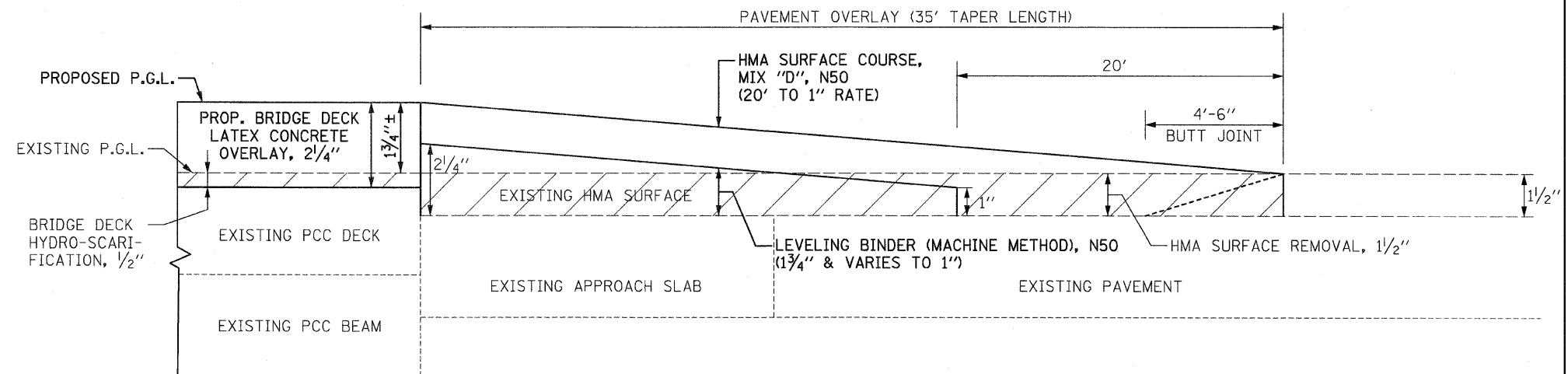
\* WHEN RAP EXCEEDS 20%, THE NEW ASPHALT BINDER IN THE MIX SHALL BE PG 58-22.



**EXISTING TYPICAL SECTION**  
 STA. 755+65.58 TO STA. 756+04.58  
 STA. 756+67.41 TO STA. 757+02.41  
 (BRIDGE OMISSION STA. 756+04.58 TO 756+67.41)

**NOTES:**

- EXISTING PAVEMENT TO BE OVERLAID WILL BE CLEANED AND PRIMED PER ARTICLE 407.06 OF THE 2007 STANDARD SPECIFICATIONS.
- SEE SHEET NO. 16 - BUTT JOINT AND HMA TAPER DETAILS FOR ADDITIONAL NOTES AND DETAILS.



**PAVEMENT MILLING AND RESURFACING - 35' TAPER WITH BUTT JOINT**  
 STA. 755+69.58 TO STA. 756+04.58  
 STA. 756+67.41 TO STA. 757+02.41

FILE NAME = 60079 typ.dgn  
 PLOT DATE = 1/12/2009

**CHRISTIAN-ROGE & ASSOCIATES, INC.**  
 ENGINEERS-PLANNERS-SURVEYORS  
 211 WEST WACKER DRIVE  
 CHICAGO, ILLINOIS 60606  
 PHONE: (312)372-2023 FAX: (312)372-5274

DESIGNED - S.J.P.  
 DRAWN - A.C.S.  
 CHECKED - E.J.M.  
 DATE - JANUARY 12, 2009

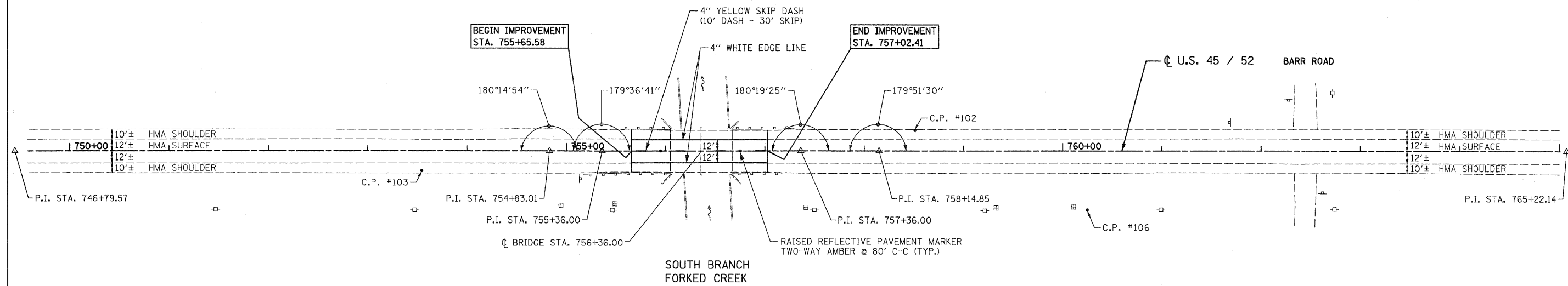
REVISED -  
 REVISED -  
 REVISED -  
 REVISED -

**STATE OF ILLINOIS**  
**DEPARTMENT OF TRANSPORTATION**

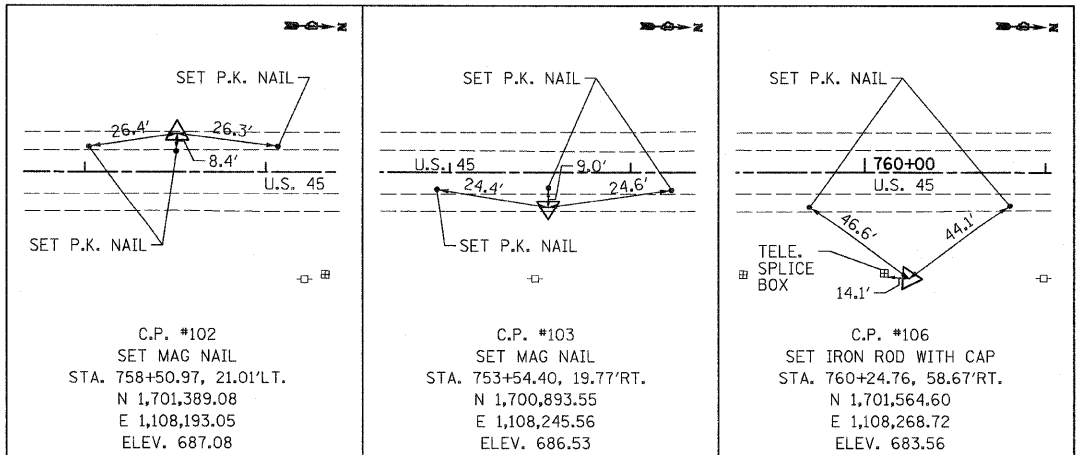
**TYPICAL SECTIONS & DETAILS**  
**U.S. 45 / 52**

SCALE: NONE SHEET NO. 1 OF 1 SHEETS STA. 755+65.58 TO STA. 757+02.41

F.A.P. RTE.	SECTION	COUNTY	TOTAL SHEETS	SHEET NO.
330	17 B-2-I-1	WILL	21	4
CONTRACT NO. 60079				
FED. ROAD DIST. NO. 1 ILLINOIS FED. AID PROJECT				



**PAVEMENT MARKING NOTES:**  
 1. ALL PAVEMENT MARKINGS ON BRIDGE DECK AND PAVEMENT SHALL BE POLYUREA, TYPE I.



CENTERLINE ALIGNMENT			
	NORTHING	EASTING	STATION
P. I.	1, 700, 218. 443	1, 108, 241. 780	746+79. 57
P. I.	1, 701, 021. 657	1, 108, 222. 753	754+83. 01
P. I.	1, 701, 074. 639	1, 108, 221. 728	755+36. 00
☉ BRIDGE	1, 701, 174. 605	1, 108, 219. 115	756+36. 00
P. I.	1, 701, 274. 570	1, 108, 216. 502	757+36. 00
P. I.	1, 701, 353. 402	1, 108, 214. 887	758+14. 85
P. I.	1, 702, 060. 505	1, 108, 198. 651	765+22. 14

FILE NAME = 60079 align pm.dgn  
 PLOT DATE = 1/12/2009

**CHRISTIAN-ROGE & ASSOCIATES, INC.**  
 ENGINEERS-PLANNERS-SURVEYORS  
 211 WEST WACKER DRIVE  
 CHICAGO, ILLINOIS 60606  
 PHONE: (312)372-2023 FAX: (312)372-5274

DESIGNED - S.J.P.	REVISED -
DRAWN - A.C.S.	REVISED -
CHECKED - E.J.M.	REVISED -
DATE - JANUARY 12, 2009	REVISED -

**STATE OF ILLINOIS**  
**DEPARTMENT OF TRANSPORTATION**

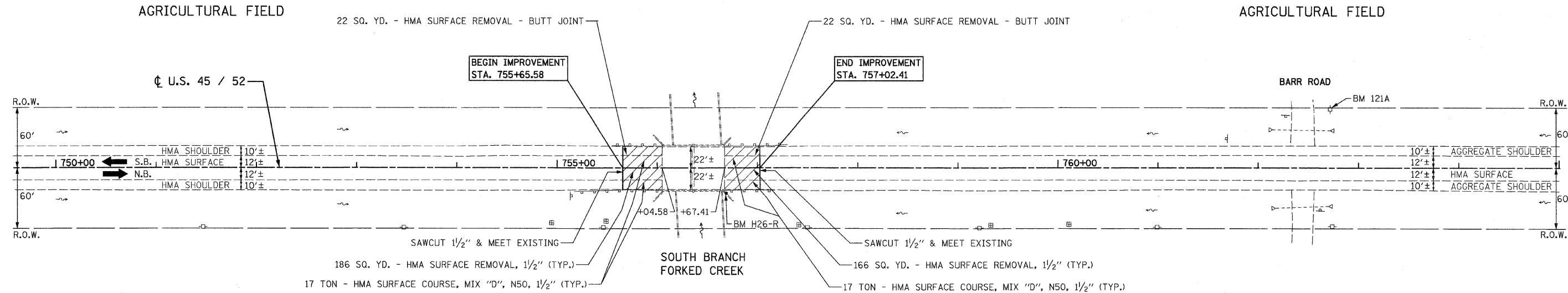
**ALIGNMENT, TIES AND PAVEMENT MARKINGS**  
**U.S. 45 / 52**

SCALE: 1" = 50' SHEET NO. 1 OF 1 SHEETS STA. 746+79.57 TO STA. 765+22.14

F.A.P. RTE. 330	SECTION 17 B-2-I-1	COUNTY WILL	TOTAL SHEETS 21	SHEET NO. 5
FED. ROAD DIST. NO. 1 ILLINOIS FED. AID PROJECT				
CONTRACT NO. 60D79				



WILL COUNTY



AGRICULTURAL FIELD

AGRICULTURAL FIELD

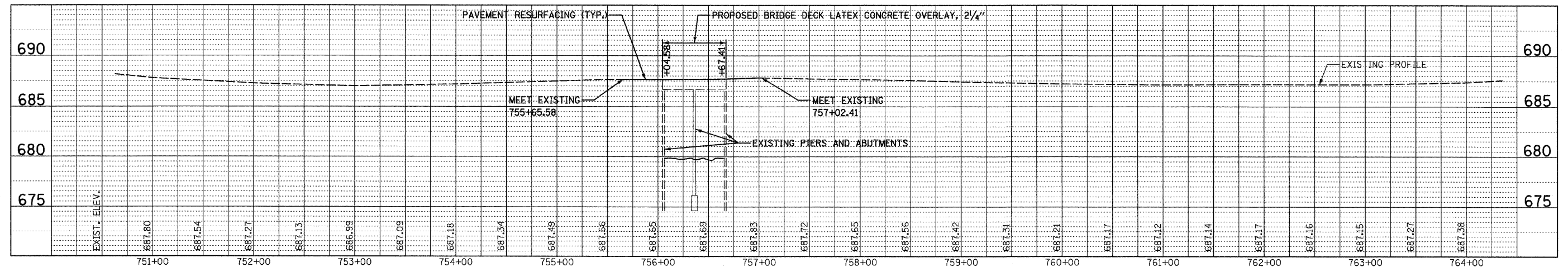
AGRICULTURAL FIELD

AGRICULTURAL FIELD

EXISTING CONDITIONS & PROPOSED PLAN

BM 121A ELEV. 690.072  
RAILROAD SPIKE IN POWER POLE  
STA. 762+71.70, 58.50' LT.

BM H26-R ELEV. 687.692  
BRONZE TABLET STAMPED  
"RESET 1968" ON N.E. WINGWALL  
STA. 756+68.66, 24.93' RT



FILE NAME = 60079 pp.dgn  
PLOT DATE = 1/12/2009

**CHRISTIAN-ROGE & ASSOCIATES, INC.**  
ENGINEERS-PLANNERS-SURVEYORS  
211 WEST WACKER DRIVE  
CHICAGO, ILLINOIS 60606  
PHONE: (312)372-2023 FAX: (312)372-5274

DESIGNED - S.J.P.  
DRAWN - A.C.S.  
CHECKED - E.J.M.  
DATE - JANUARY 12, 2009

REVISED -  
REVISED -  
REVISED -  
REVISED -

STATE OF ILLINOIS  
DEPARTMENT OF TRANSPORTATION

EXISTING CONDITIONS AND PROPOSED PLAN AND PROFILE  
U.S. 45 / 52

SCALE: 1" = 50' SHEET NO. 1 OF 1 SHEETS STA. 750+00 TO STA. 764+00

F.A.P. RTE.	SECTION	COUNTY	TOTAL SHEETS	SHEET NO.
330	17 B-2-I-1	WILL	21	6
FED. ROAD DIST. NO. 1 ILLINOIS FED. AID PROJECT				

CONTRACT NO. 60D79

## SUGGESTED STAGING AND MAINTENANCE OF TRAFFIC

### CONSTRUCTION STAGING

#### STAGE I (NORTHBOUND LANE CONSTRUCTION)

- HYDRO-SCARIFY NORTHBOUND HALF OF BRIDGE AND PLACE PROPOSED BRIDGE DECK LATEX CONCRETE OVERLAY.
- PLACE TEMPORARY HMA RAMP FOR NORTHBOUND LANES AT THE END OF STAGE I.

#### STAGE II (SOUTHBOUND LANE CONSTRUCTION)

- HYDRO-SCARIFY SOUTHBOUND HALF OF BRIDGE AND PLACE PROPOSED BRIDGE DECK LATEX CONCRETE OVERLAY.
- RESURFACE BOTH LANES OF PAVEMENT.

### MAINTENANCE OF TRAFFIC

#### STAGE I

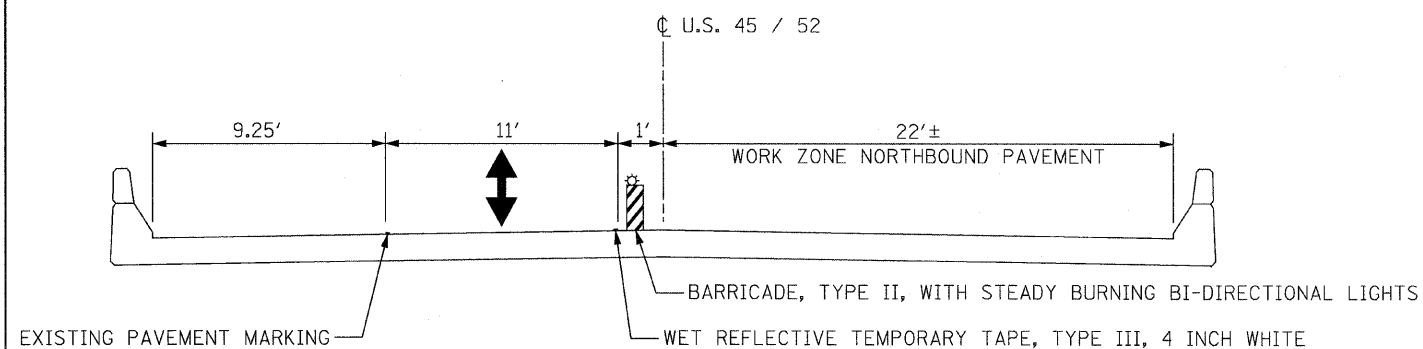
- INSTALL TEMPORARY BRIDGE TRAFFIC SIGNALS AND TEMPORARY LIGHTING.  
USE DAILY LANE CLOSURES, SEE IDOT STANDARD 701201 - LANE CLOSURE, 2L, 2W, DAY ONLY, FOR SPEEDS > 45 MPH.
- CLOSE NORTHBOUND LANE AND MAINTAIN ONE-LANE TWO-WAY TRAFFIC ON SOUTHBOUND PAVEMENT ACROSS BRIDGE AS SHOWN ON THE SUGGESTED MAINTENANCE OF TRAFFIC AND STAGING PLAN AND IDOT STANDARD 701316.

#### STAGE II

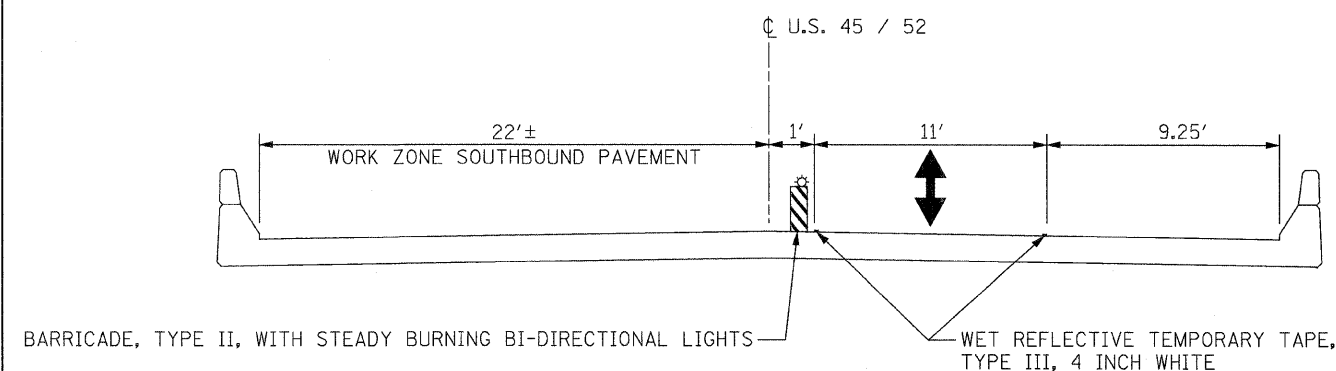
- SHIFT ONE-LANE TWO-WAY TRAFFIC TO NORTHBOUND PAVEMENT ACROSS BRIDGE AS SHOWN ON THE SUGGESTED MAINTENANCE OF TRAFFIC AND STAGING PLAN AND IDOT STANDARD 701316.
- REMOVE TEMPORARY BRIDGE TRAFFIC SIGNALS AND USE DAILY LANE CLOSURES TO RESURFACE THE PAVEMENT ADJACENT TO THE BRIDGE.  
SEE IDOT STANDARD 701201 - LANE CLOSURE, 2L, 2W, DAY ONLY, FOR SPEEDS > 45 MPH.

## TRAFFIC CONTROL GENERAL NOTES

1. THE CONTRACTOR SHALL NOT MOUNT SIGNS ON EXISTING SIGNS.
2. FLUORESCENT VESTS: ALL CONSTRUCTION PERSONNEL WILL BE REQUIRED TO WEAR FLUORESCENT VESTS AT ALL TIMES WHILE ON THE CONSTRUCTION SITE. COMPLIANCE WITH THIS REQUIREMENT SHALL BE CONSIDERED INCIDENTAL TO THE CONTRACT.
3. CONTRACTOR SHALL MAINTAIN SATISFACTORY INGRESS AND EGRESS TO ADJACENT PROPERTIES THROUGHOUT THE CONSTRUCTION.
4. INSTALL TEMPORARY SIGN PANEL ASSEMBLY AS SHOWN IN PLANS AND AS DIRECTED BY THE ENGINEER. TO BE PAID FOR BY ITEM "TEMPORARY INFORMATION SIGNING FOR LANE CLOSURE".
5. EACH DETECTOR LOOP SHALL BE CONNECTED TO A SEPARATE DETECTOR AMPLIFIER.
6. ALL TEMPORARY PAVEMENT MARKING SHALL BE WET REFLECTIVE TEMPORARY TAPE, TYPE III.
7. THE FIRST TWO SIGNS ENTERING THE WORK ZONE SHALL HAVE MONO-DIRECTIONAL FLASHING BEACONS.
8. USE SUGGESTED TRAFFIC CONTROL AND STAGING PLAN IN CONJUNCTION WITH STANDARD 701316.
9. EMERGENCY PREEMPTION WILL BE REQUIRED FOR THE TEMPORARY BRIDGE TRAFFIC SIGNALS. THE COST OF THIS WILL BE INCLUDED IN THE CONTRACT UNIT PRICE FOR TEMPORARY BRIDGE TRAFFIC SIGNAL INSTALLATION.



DECK CROSS SECTION - STAGE I



DECK CROSS SECTION - STAGE II

FILE NAME = 68079 staging1.dgn  
PLOT DATE = 1/12/2009



**CHRISTIAN-ROGE & ASSOCIATES, INC.**  
ENGINEERS-PLANNERS-SURVEYORS  
211 WEST WACKER DRIVE  
CHICAGO, ILLINOIS 60606  
PHONE: (312)372-2023 FAX: (312)372-5274

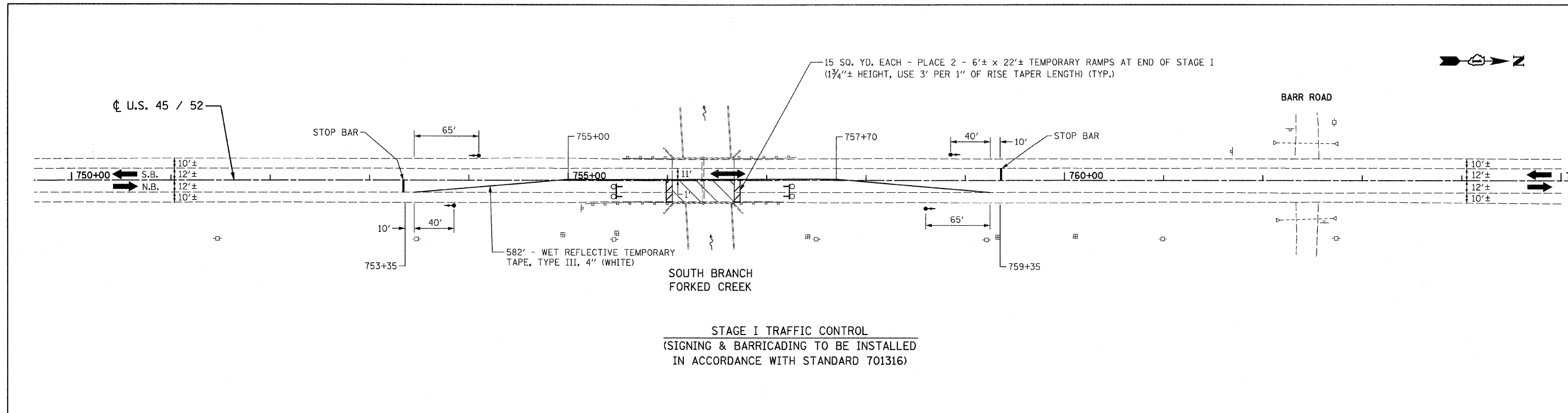
DESIGNED - S.J.P.	REVISED -
DRAWN - A.C.S.	REVISED -
CHECKED - E.J.M.	REVISED -
DATE - JANUARY 12, 2009	REVISED -

**STATE OF ILLINOIS  
DEPARTMENT OF TRANSPORTATION**

**SUGGESTED MAINTENANCE OF TRAFFIC NOTES AND DETAILS  
U.S. 45 / 52**

SCALE: NONE    SHEET NO. 1 OF 2 SHEETS    STA. 750+00    TO STA. 764+00

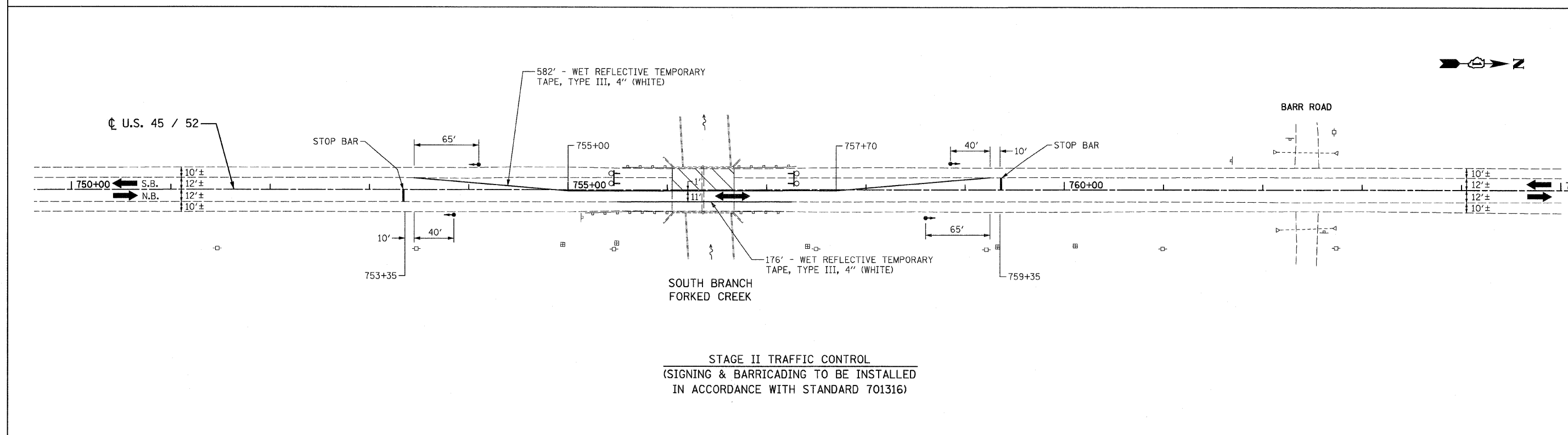
F.A.P. RTE. 330	SECTION 17 B-2-I-1	COUNTY WILL	TOTAL SHEETS 21	SHEET NO. 7
CONTRACT NO. 60D79				
FED. ROAD DIST. NO. 1 ILLINOIS FED. AID PROJECT				



**STAGE I TRAFFIC CONTROL**  
 (SIGNING & BARRICADING TO BE INSTALLED  
 IN ACCORDANCE WITH STANDARD 701316)

**TRAFFIC CONTROL AND STAGING LEGEND**

- WORK ZONE
- DIRECTION OF TRAFFIC
- TYPE III BARRICADES WITH FLASHING LIGHTS
- TRAFFIC SIGNAL



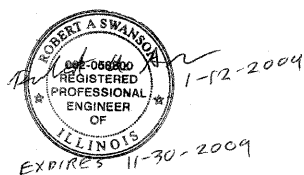
**STAGE II TRAFFIC CONTROL**  
 (SIGNING & BARRICADING TO BE INSTALLED  
 IN ACCORDANCE WITH STANDARD 701316)



**LEGENDS**

**DESCRIPTION**

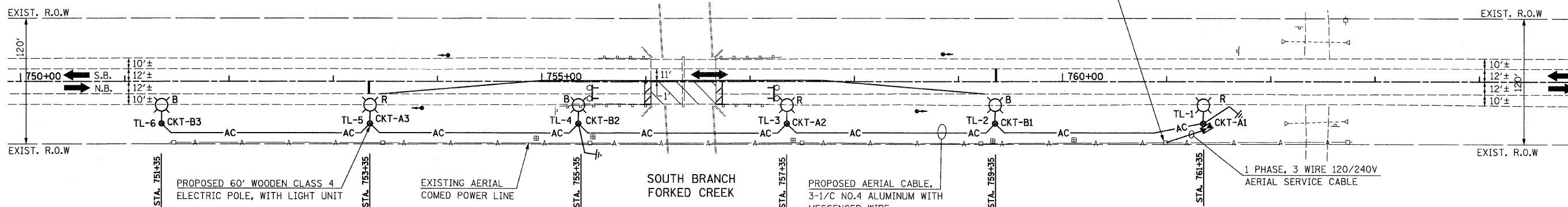
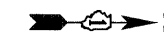
EXISTING	PROPOSED	DESCRIPTION
		400W, 120V, MCIII HPS. WITH PHOTO CELL 15' MA, 50 MH ON WOOD POLE
—A—		AERIAL LINE (COMED/TELEPHONE)
—AC—		AERIAL ELECTRIC CABLE (OF SIZE NOTED) WITH MESSENGER WIRE
		WOODEN POLE
TL-1		TEMPORARY LIGHTING UNIT NUMBER - ONE
		5/8 " x 10' GROUND ROD
		COMBINATION LIGHTING AND TRAFFIC POLE MOUNTED ELECTRICAL SERVICE BOX
		COMED POWER POLE
		TELEPHONE SPLICE BOX
		TRAFFIC SIGNAL LOOP
		TRAFFIC SIGNAL



**MAINTENANCE OF TRAFFIC STAGE I CONSTRUCTION SHOWN  
TEMPORARY LIGHTING TO REMAIN ACTIVE DURING STAGE I & II**

**BILL OF MATERIALS - TEMPORARY LIGHTING**

ITEM	QUANTITY	UNIT
ELECTRIC SERVICE INSTALLATION	1	EACH
ELECTRIC UTILITY SERVICE CONNECTION	1	L SUM
AERIAL CABLE, 3-1/C NO. 4 WITH MESSENGER WIRE	1,050	FOOT
LUMINAIRE, SODIUM VAPOR, HORIZONTAL MOUNT, PHOTO-CELL CONTROL, 400 WATT	6	EACH
LIGHT POLE, WOOD, 60 FOOT, CLASS 4, WITH 15 FT. MAST ARM	6	EACH
REMOVAL OF TEMPORARY LIGHTING UNITS	6	EACH
MAINTENANCE OF LIGHTING SYSTEM	3	CAL MO
GROUND ROD, 5/8" DIA. x 10 FT.	1	EACH
COMBINATION POLE MOUNTED ELECTRIC SERVICE BOX	1	EACH
ELECTRIC SERVICE DISCONNECT, LIGHTING AND TRAFFIC SIGNAL	1	EACH



**NOTES:**

- THE MATERIALS AND INSTALLATION METHODS SHALL COMPLY WITH THE LATEST CODES, STANDARDS AND ORDINANCES OF FEDERAL, STATE AND LOCAL GOVERNING BODIES HAVING JURISDICTION. ALL WORKS SHOWN ON THE PLANS AND DESCRIBED ELSEWHERE SHALL ALSO CONFORM TO THE LATEST NATIONAL ELECTRICAL CODE.
- ALL MATERIAL PARTS OF THE LIGHT POLES SHALL BE GROUNDED AND BONDED CONFORMING TO NEC ARTICLE 250. THE EQUIPMENT GROUND SHALL BE CONTINUOUS AND CONNECTED UP TO THE ELECTRICAL SYSTEM GROUND. THIS WORK SHALL BE INCLUDED IN THE LIGHT POLE PAY ITEM.
- THE LIGHT POLE SETBACK FROM THE EDGE OF TRAVEL PAVEMENT SHALL BE 28' TO AVOID CLEARZONE, CONFLICT WITH COMED POLES AND THE DRAINAGE DITCH, UNLESS THE LIGHT POLE IS BEHIND GUARDRAIL. THE LIGHT POLES WHEN INSTALLED BEHIND THE GUARDRAIL SHALL HAVE AT LEAST EIGHT FOOT SETBACK FROM THE BACK OF THE SHOULDER AND / OR AS DIRECTED BY THE ENGINEER.
- THE TEMPORARY LIGHT POLES SHALL HAVE IDENTIFICATION NUMBERS AS SHOWN ON THE PLANS.
- THE CONTRACTOR SHALL BE RESPONSIBLE FOR ANY DAMAGE TO THE LIGHTING AND TRAFFIC SIGNAL INSTALLATION. THE CONTRACTOR SHALL NOT INSTALL DAMAGED EQUIPMENT OR DEFECTIVE DEVICES, INSTEAD THE CONTRACTOR SHALL REPLACE IT WITH NEW ONES AT NO COST TO IDOT AND/OR AS DIRECTED BY THE ENGINEER.
- THE CONTRACTOR SHALL SPLICE AERIAL CABLE AT THE LIGHT POLE USING HEAT SHRINKABLE CAPS WITH THE FACTORY APPLIED WATERPROOF SEALANT. THE INSTALLATION AND REQUIRED MATERIAL SHALL BE INCLUDED IN THE LIGHT POLE PAY ITEM.
- THE CONTRACTOR SHALL FOLLOW THE CONSTRUCTION AND STAGING AS SHOWN ON THE PLANS OR AS DIRECTED BY THE ENGINEER. FURTHERMORE, THE CONTRACTOR SHALL COORDINATE ALL SUCH ACTIVITIES BEING DONE IN THE SAME AREA BY THE UTILITY COMPANIES OR OTHER CONTRACTORS AND SETUP COORDINATION MEETINGS IF NECESSARY WITHOUT ANY ADDITIONAL FINANCIAL COMPENSATION.
- THE PROPOSED TEMPORARY LIGHTING SHALL BE COMPLETED, TESTED, OPERATIONAL AND VERIFIED BY IDOT BEFORE STAGE I TRAFFIC CONTROL IS IN PLACE. THE CONTRACTOR SHALL SUBMIT A STAGING SCHEDULE IDENTIFYING THE STARTING AND COMPLETION DATES PRIOR TO THE COMMENCEMENT OF WORK FOR PROCUREMENT, INSTALLATION AND/OR REMOVAL OF EXISTING MATERIAL AND/OR EQUIPMENT.
- ALL AREAS DISTURBED UNDER THIS CONTRACT SHALL BE RESTORED TO THE ORIGINAL CONDITION OR BETTER TO THE SATISFACTION OF THE ENGINEER.
- LIGHTING SHALL BE KEPT OPERATIONAL AND ACTIVE FROM ONE HOUR BEFORE SUNSET TO ONE HOUR AFTER SUNRISE. AS PER "NATIONAL ELECTRIC CODE", OVERHEAD SPANS OF AERIAL CABLE AND MESSENGER WIRE MUST HAVE A VERTICAL CLEARANCE OF 18' MINIMUM ABOVE THE GROUND AT ALL TIMES AND AT ALL LOCATIONS ON THE PROJECT.
- THE CONTRACTOR SHALL INSTALL ALL EQUIPMENT SO AS TO COMPLY WITH REQUIRED ELECTRICAL CLEARANCES PER NATIONAL ELECTRICAL CODE (NEC) SECTION 225-18, NATIONAL ELECTRICAL SAFETY CODE AND COMED REQUIREMENTS.
- GROUND RODS SHALL BE INSTALLED AT EVERY THIRD TEMPORARY LIGHT POLE AND SHALL BE PAID UNDER THE ITEM "GROUND ROD, 5/8" DIA. x 10 FT.", EXCEPT FOR THE GROUND ROD AT THE LIGHT POLE WITH SERVICE DISCONNECT BOX. THE LATTER (GROUND ROD) SHALL BE INCLUDED IN THE PAY ITEM "ELECTRIC SERVICE DISCONNECT, LIGHTING AND TRAFFIC SIGNAL".
- THE QUANTITIES AS SHOWN IN THE BILL OF MATERIALS FOR THE TEMPORARY LIGHTING IS APPROXIMATE. THE CONTRACTOR SHALL BE RESPONSIBLE FOR FIELD VERIFYING ALL QUANTITIES PRIOR TO ORDERING ANY MATERIALS OR EQUIPMENT.
- THE TEMPORARY LIGHTING SHALL USE AERIAL CABLES AS SHOWN ON THE PLANS. HOWEVER, THE UNDERGROUND NEW ELECTRICAL INSTALLATION, IF ANY, SHALL BE AT A MINIMUM 30 INCHES BELOW GRADE AND SHALL HAVE ELECTRICAL WARNING TAPE CONFORMING TO IDOT STANDARDS.
- THE CONTRACTOR SHALL NOTIFY THE UTILITY COMPANY AS SOON AS POSSIBLE CONCERNING PENDING ELECTRICAL SERVICE INSTALLATION AND CONNECTION TO ENSURE THE AVAILABILITY OF ELECTRICAL POWER SUPPLY IN A TIMELY MANNER.
- THE CONTRACTOR MAY MODIFY ELECTRICAL IDOT STANDARD DETAILS AS NECESSARY TO SUIT SPECIFIC SITE CONDITIONS. HOWEVER, THE CONTRACTOR SHALL OBTAIN THE ENGINEER'S APPROVAL PRIOR TO THE INSTALLATION.
- THE REMOVAL OF TEMPORARY LIGHTING SHALL INCLUDE, BUT NOT LIMITED TO: ALL WOODEN POLES, LUMINAIRES WITH MAST ARMS, MESSENGER WIRES / CABLES, COM ED SERVICE CABLES, CONDUITS AND/OR SERVICE BOXES AND HAULING AWAY OF THESE ITEMS FROM THE PROJECT SITE. ALL TEMPORARY LIGHTING EQUIPMENT AND MATERIAL REMOVED FROM THE PROJECT SHALL BECOME THE PROPERTY OF THE CONTRACTOR.
- THE FIELD SURVEY SHOWS NO EXISTING TRANSFORMER IN THE VICINITY OF THE PROJECT. THEREFORE, THE CONTRACTOR SHALL CONTACT COMED FOR THE INSTALLATION OF A NEW TRANSFORMER AT THE PROPOSED LOCATION, PENDING ELECTRICAL SERVICE INSTALLATION AND CONNECTION TO ENSURE AVAILABILITY OF ELECTRICAL POWER SUPPLY IN A TIMELY MANNER. THE COST OF THE NEW TRANSFORMER SHALL BE INCLUDED IN THE PAY ITEM "ELECTRIC UTILITY SERVICE CONNECTION." COMED CONTACT INFORMATION FOR THIS PROJECT IS AS FOLLOWS:  
FIELD REPRESENTATIVE: LUCILLE JONES (815) 724-5607 ACCOUNT NO. 16530-03-074

FILE NAME = 68079 light.dgn  
PLOT DATE = 1/12/2009

**CHRISTIAN-ROGE & ASSOCIATES, INC.**  
ENGINEERS-PLANNERS-SURVEYORS  
211 WEST WACKER DRIVE  
CHICAGO, ILLINOIS 60606  
PHONE: (312)372-2023 FAX: (312)372-5274

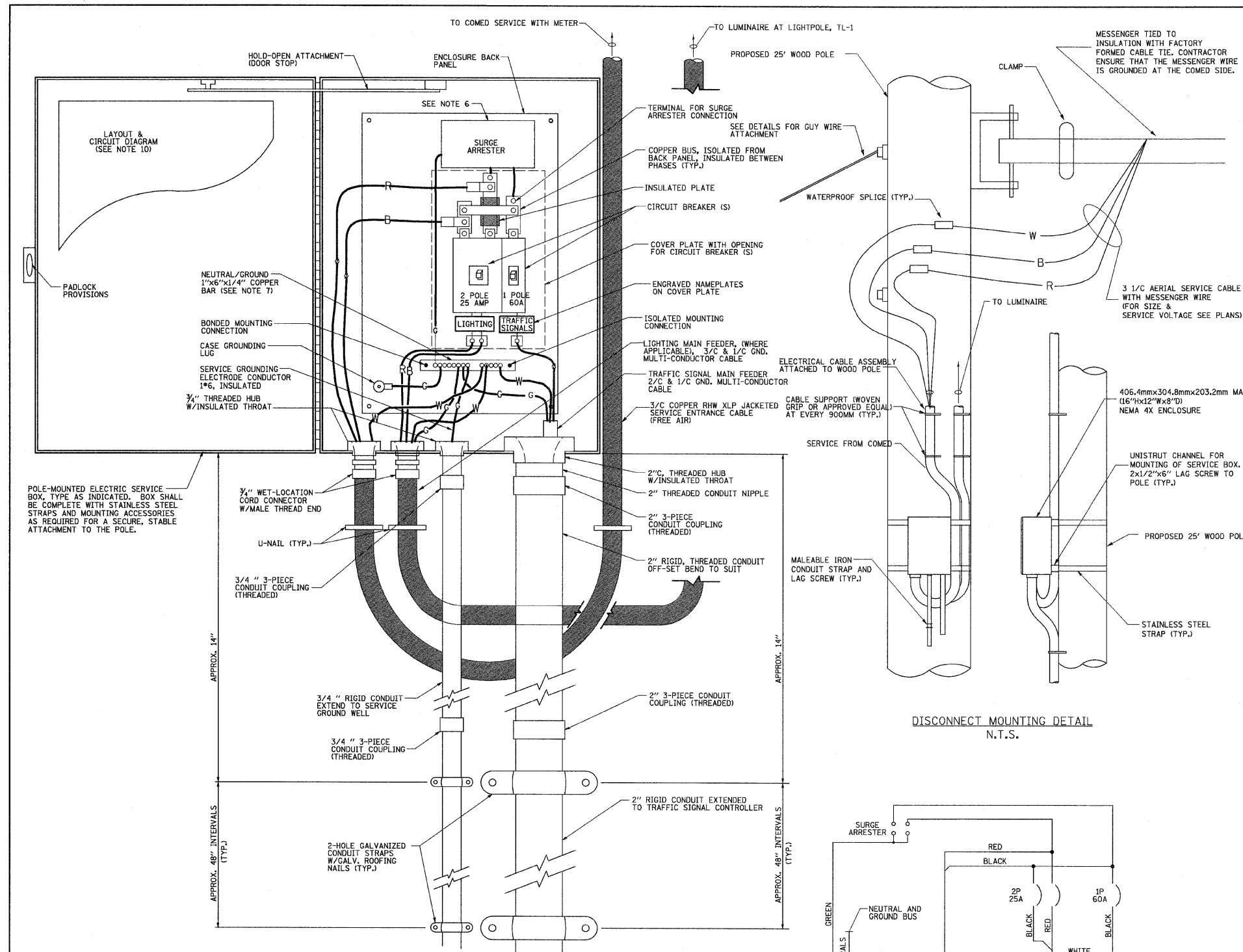
DESIGNED - M.A.	REVISED -
DRAWN - M.A.	REVISED -
CHECKED - E.J.M.	REVISED -
DATE - JANUARY 12, 2009	REVISED -

**STATE OF ILLINOIS  
DEPARTMENT OF TRANSPORTATION**

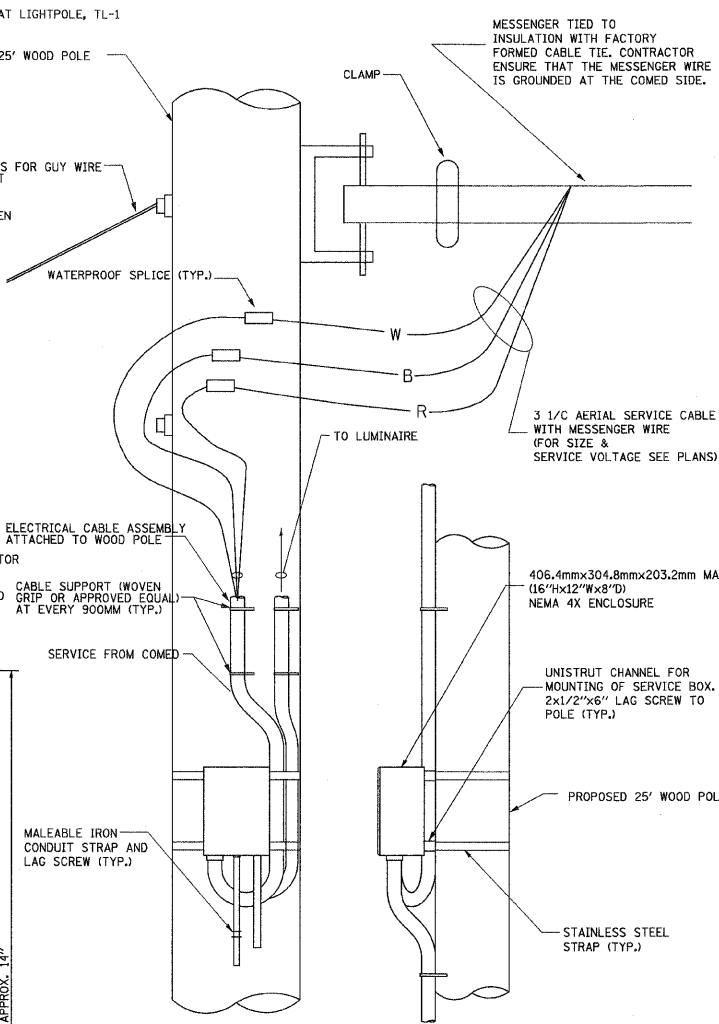
**TEMPORARY LIGHTING PLAN  
U.S. 45 / 52**

SCALE: 1" = 50' SHEET NO. 1 OF 2 SHEETS STA. 750+00 TO STA. 764+00

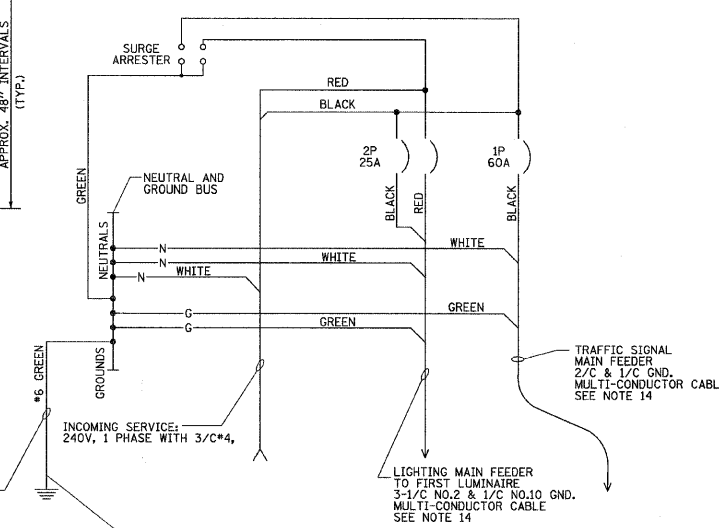
F.A.P. RTE.	SECTION	COUNTY	TOTAL SHEETS	SHEET NO.
330	17 B-2-I-1	WILL	21	9
CONTRACT NO. 60D79				
FED. ROAD DIST. NO. 1 ILLINOIS FED. AID PROJECT				



POLE-MOUNTED ELECTRIC SERVICE ENTRANCE  
GENERAL LAYOUT DIAGRAM



DISCONNECT MOUNTING DETAIL  
N.T.S.



SCHEMATIC DIAGRAM

NOTES

- ELECTRIC SERVICE SHALL BE OF THE VOLTAGE INDICATED OR DESIGNATED BY THE ENGINEER, AND SERVICE DROP CABLE SHALL BE COMPATIBLE WITH THE SERVICE ACCORDINGLY. SOME INSTALLATIONS MAY CALL FOR SERVICE ENTRANCE EQUIPMENT SUITABLE FOR 3-WIRE SERVICE EVEN THOUGH INITIALLY WIRED FOR 2-WIRE SERVICE.
- THE POLE-MOUNTED ELECTRIC SERVICE BOX DETAIL DEPICTS THE BASIC CONSTRUCTION OF THE EQUIPMENT. SLIGHT MODIFICATIONS APPLY FOR DIFFERING SERVICES AND APPLICATIONS AS FOLLOWS:  
FULLY EQUIPPED FOR 240/120V. 3W SERVICE, COMPLETE WITH LIGHTING MAIN BREAKER  
FULLY EQUIPPED FOR 240/120V. 3W SERVICE, BLANK COVER IN LIEU OF LIGHTING MAIN BREAKER  
EQUIPPED FOR 120V. SERVICE, COMPLETE WITH 1P, 60A. TRAFFIC SIGNALS MAIN BREAKER  
EQUIPPED FOR 120V. SERVICE, COMPLETE WITH 1P, 40A. TRAFFIC SURVEILLANCE MAIN BREAKER
- THE ELECTRIC SERVICE EQUIPMENT ASSEMBLY SHALL BE UL LISTED AS SUITABLE FOR USE AS SERVICE ENTRANCE EQUIPMENT.
- THE ELECTRIC SERVICE EQUIPMENT ENCLOSURE SHALL BE NEMA 4X STAINLESS STEEL, NOMINALLY 12"W X 16"H X 8"D, WITH A PIANO-HINGED DOOR, STEEL BACK PANEL, FAST-ACTING STAINLESS STEEL ENCLOSURE CLAMPS, PADLOCK PROVISIONS AND DOOR STOP, HOFFMAN CATALOG NO. A-16H1208SS6LP/A-16, P12/A-DSTOPK/C-PMK12, OR APPROVED EQUAL.
- CIRCUIT BREAKERS SHALL BE THERMAL MAGNETIC BOLT-ON TYPE WITH A MINIMUM INTERRUPTING CAPACITY OF 25,000 SYMMETRICAL AMPERES AT 120 VOLTS. THEY SHALL BE LOCKABLE IN THE "OFF" POSITION FOR COMPLIANCE WITH OSHA LOCK-OUT/TAG-OUT REQUIREMENTS. HANDLES SHALL BE TRIP FREE.
- THE SURGE PROTECTOR SHALL BE SUITABLE FOR 240/120 VOLT SINGLE PHASE 60HZ AC ELECTRICAL SERVICE, WITH A SURGE ENERGY CAPABILITY OF 2160 JOULES OR BETTER AT 8/20 MICRO-SECONDS, RATED -40 TO 60 DEGREES C., WITH LED OPERATING INDICATORS, AND SHALL BE UL LISTED PER UL 1449, CUTLER-HAMMER CM0V230L065XST OR APPROVED EQUAL.
- BUS BARS, CONNECTORS, AND LUGS SHALL BE COPPER, INSULATED AND ISOLATED, AND CONFIGURED TO PREVENT SHORTED CONDITIONS FROM TIGHTENING TERMINATIONS, ETC. THE OVERALL BUS SECTION SHALL BE CONFIGURED BEHIND AN INSULATING BARRIER SHIELD WHICH IS REMOVABLE FOR ACCESS TO CONNECTIONS, OR THE ASSEMBLY SHALL BE A MANUFACTURED SPECIALTY PANELBOARD, CUTLER-HAMMER PRL2A OR APPROVED EQUAL.
- THE COMBINATION GROUND AND NEUTRAL BAR SHALL BE CONFIGURED WITH SEPARATE GROUND AND NEUTRAL SECTIONS AND SPARE TERMINALS AS INDICATED. THE HEADS OF GROUND SCREWS SHALL BE PAINTED GREEN. THE HEADS OF NEUTRAL SCREWS SHALL BE PAINTED WHITE. THE SERVICE NEUTRAL AND SERVICE GROUNDING ELECTRODE CONDUCTOR SHALL BE TERMINATED ADJACENT TO EACH OTHER AT THE DIVIDE BETWEEN THE SECTIONS AND WIRING SHALL BE TERMINATED ONLY UPON THE APPROPRIATE SECTION.
- THE WIRING TERMINALS, INCLUDING THE GROUND/NEUTRAL BAR SHALL BE ARRANGED TO PROVIDE ADEQUATE ROOM FOR PERFORMING FIELD TERMINATIONS.
- A PLASTIC LAMINATED LAYOUT AND CIRCUIT DIAGRAM SHALL BE MECHANICALLY SECURED TO THE INTERIOR SIDE OF THE ENCLOSURE DOOR.
- A 2-COLOR ENGRAVED PLASTIC NAMEPLATE, ATTACHED WITH SCREWS, AND ENGRAVED AS INDICATED, SHALL BE PROVIDED FOR EACH MAIN BREAKER.
- LUGS AND CONNECTORS SHALL BE RATED FOR 75 C CONDUCTOR.
- THE EXACT MOUNTING HEIGHT OF THE BOX SHALL BE FIELD DETERMINED TO AVOID OBSTRUCTIONS AND PUBLIC ACCESS. TYPICAL HEIGHT SHALL BE APPROXIMATELY 10 FEET ABOVE GRADE.
- THE FEEDER CABLE (MATERIAL & INSTALLATION) FROM SERVICE DISCONNECT TO THE FIRST LIGHT POLE, AS SHOWN ON PLANS IS INCLUDED UNDER THE PAY ITEM "ELECTRIC SERVICE DISCONNECT, LIGHTING AND TRAFFIC SIGNAL".

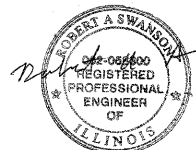
CIRCUIT NO.	CIRCUIT BREAKER / POLES	UTILITY DESCRIPTION	LOAD <sup>1</sup> (WATTS)	CURRENT <sup>2</sup> (AMPERES)
A	25A / 2P	(4) 400W HPS POLE NOS.TL-1, TL-3, TL-5, & TL-7	1,920	16.84
B		(3) 400W HPS POLE NOS.TL-2, TL-4, & TL-6	1,440	12.63
TOTAL			3,360	29.47

NOTE:

- LOAD INCLUDES 20% BALLAST LOSSES FOR LUMINAIRES
- CURRENT CALCULATIONS INCLUDE A POWER FACTOR OF 0.95.



6" DECAL ON FRONT COVER

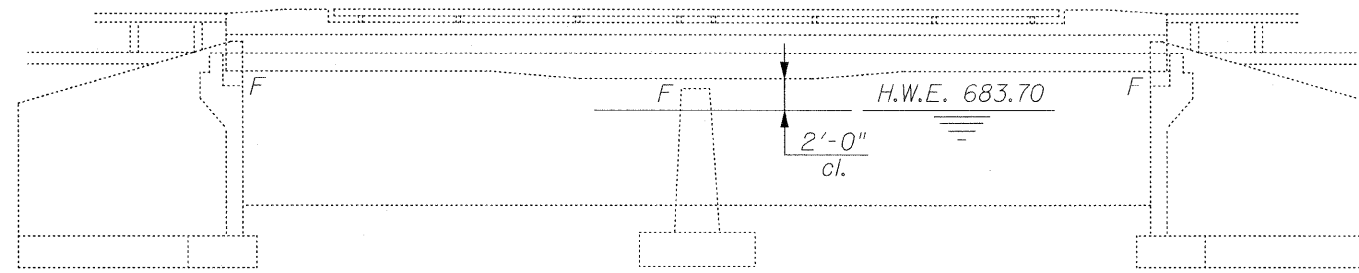


EXPIRES 11-30-2009

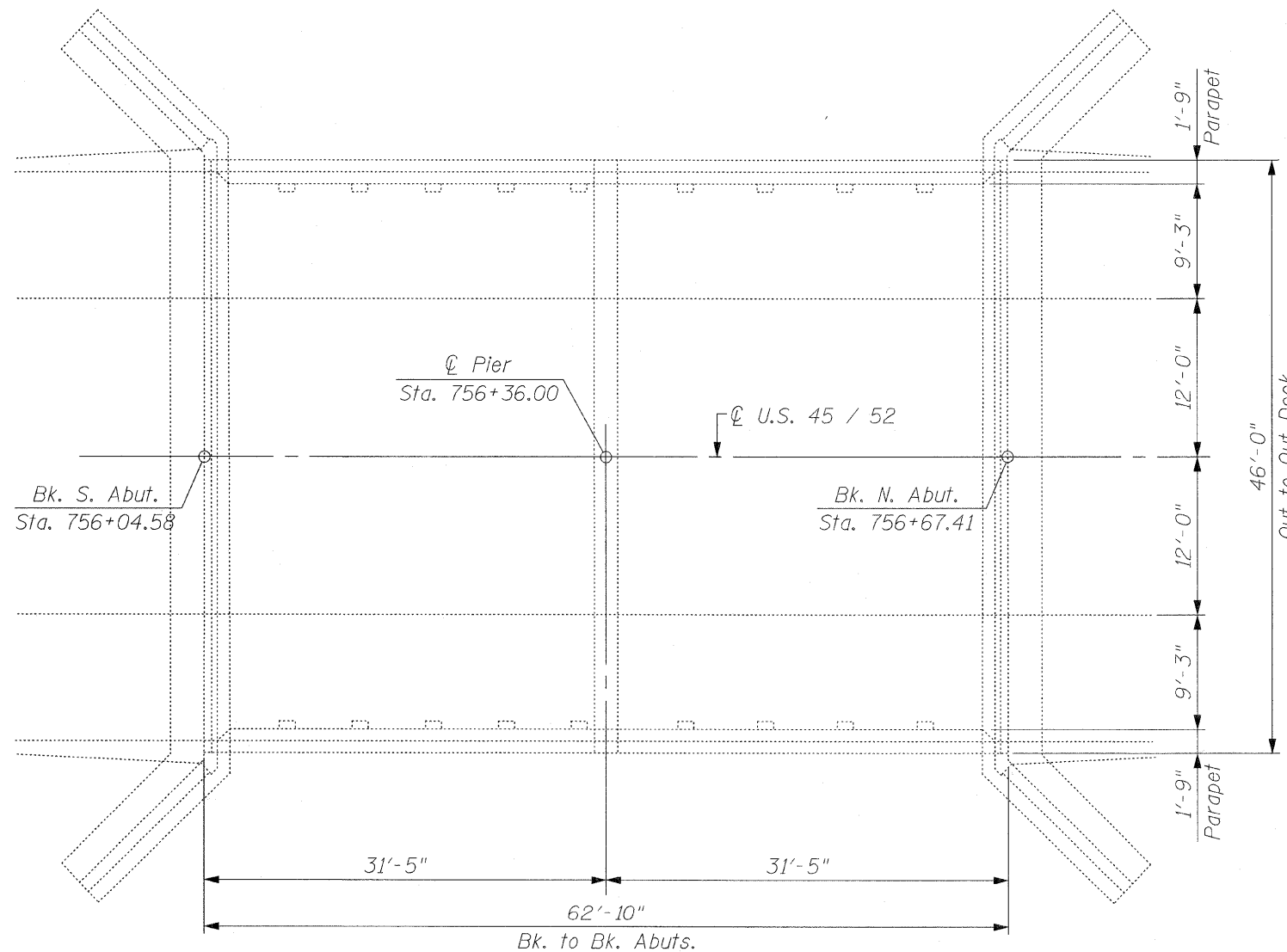
**GENERAL NOTES:**

Plan Dimensions and Details Relative to Existing Plans are Subject to Nominal Construction Variations. The Contractor Shall Field Verify Existing Dimensions and Details Affecting new Construction and Make Necessary Approved Adjustments Prior to Construction or Ordering of Materials. Such Variations Shall not be Cause for Additional Compensation for a Change in Scope of the Work, However, the Contractor will be Paid for the Quantity Actually Furnished at the Unit Price Bid for the Work.

These Plans Have Been Prepared From Notes Received From I.D.O.T. Field Maintenance Engineers.



**ELEVATION**



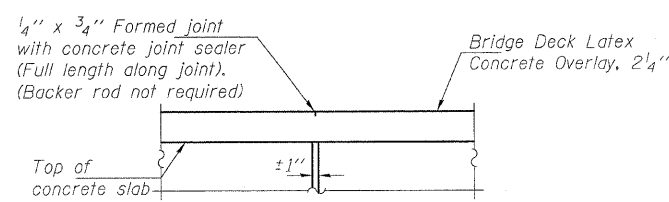
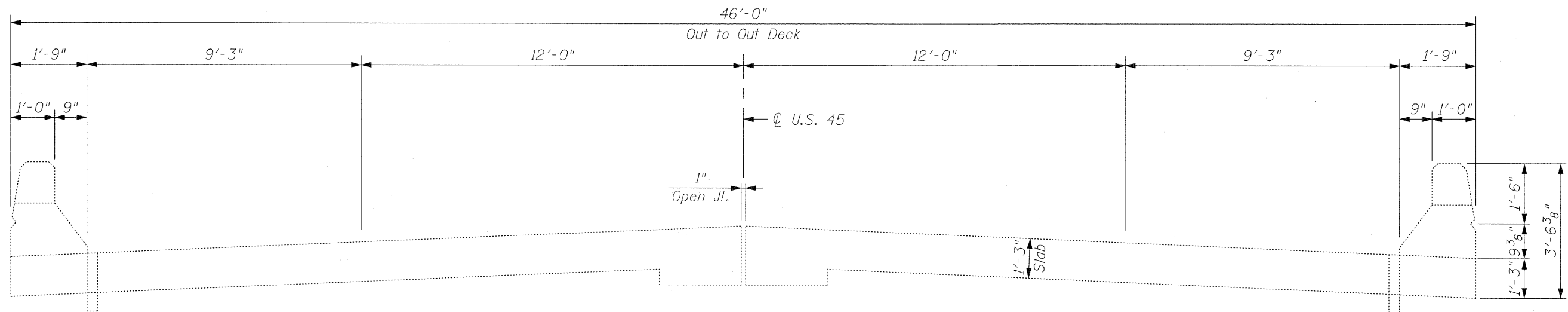
**PLAN**

**TOTAL BILL OF MATERIAL**

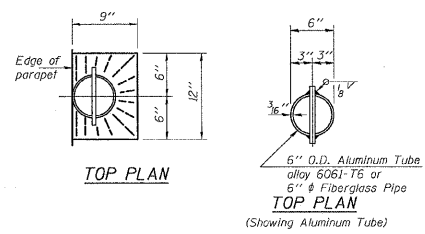
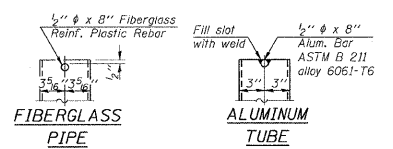
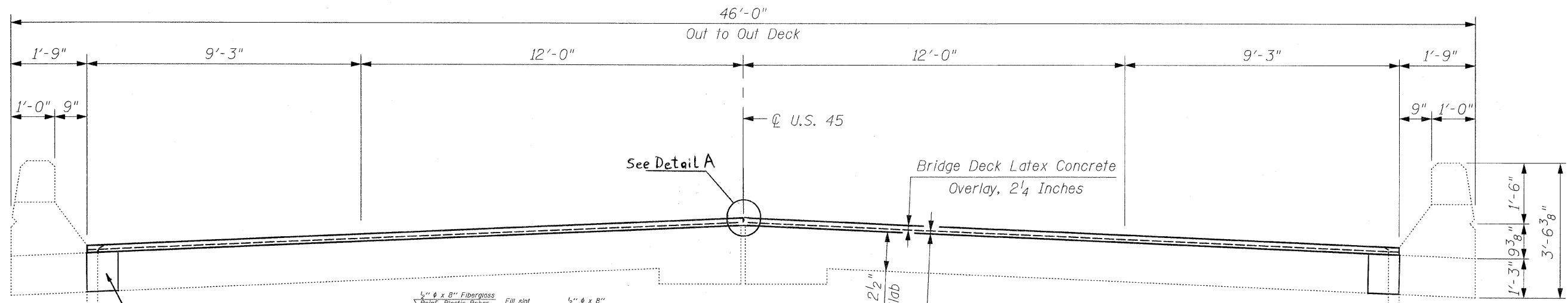
ITEM	UNIT	QUANTITY
Bridge Deck Hydro-Scarification, 1/2 Inch	Sq. Yd.	293
Bridge Deck Latex Concrete Overlay, 2 1/4 Inches	Sq. Yd.	293
Deck Slab Repair (Full Depth, Type II)	Sq. Yd.	15
Bridge Deck Grooving	Sq. Yd.	283
Structural Repair of Concrete (Depth Equal to or Less Than 5 Inches)	Sq. Ft.	125
Protective Coat	Sq. Yd.	293

**CR & A** CHRISTIAN-ROGE & ASSOCIATES, INC.  
 ENGINEERS / PLANNERS / SURVEYORS  
 211 W. WACKER DRIVE CHICAGO, IL 60606  
 PHONE: (312)372-2023 FAX: (312)372-5274

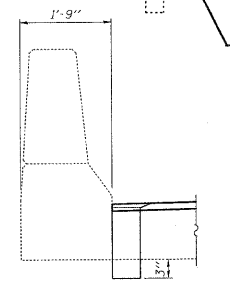
FILE NAME = plan_elev.sht	USER NAME = IDOT	DESIGNED - B.N.S.	REVISED -	<b>STATE OF ILLINOIS DEPARTMENT OF TRANSPORTATION</b>	<b>PLAN &amp; ELEVATION U.S. 45 / 52 OVER SOUTH BRANCH FORKED CREEK</b>		F.A.P. RTE. 330	SECTION 17 B-2-1-1	COUNTY WILL	TOTAL SHEETS 21	SHEET NO. 11
PLOT SCALE = 50,0000' / IN.		DRAWN - D.L./R.E.S./F.M.	REVISED -		<b>S.N. 099-0121</b>		SCALE:		CONTRACT NO. 60D79		
PLOT DATE = 1/12/2009		CHECKED - B.N.S./S.J.P./J.C.N.	REVISED -		SHEET NO. S1 OF S6 SHEETS		STA.	TO STA.		FED. ROAD DIST. NO. 1 ILLINOIS FED. AID PROJECT	
DATE - JANUARY 12, 2009		REVISOR -	REVISED -								



**EXISTING**  
**DECK CROSS SECTION**



**Notes:**  
The exterior surfaces of the floor drains shall be painted with the finish coat as specified in the special provisions for Cleaning and Painting New Metal Structures. The exterior surfaces of the drains shall be cleaned according to Steel Structures Painting Council's Spec. SSPC-SP1 prior to painting. Fiberglass pipe shall conform to ASTM D 2996, with short-time rupture strength hoop tensile stress of 30,000 p.s.i. minimum.

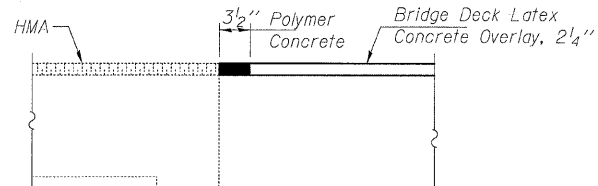


**SECTION AT PARAPET**  
Cost of drain is included in the cost of Deck Slab Repair (Full Depth, Type I)

**PROPOSED**  
**DECK CROSS SECTION**

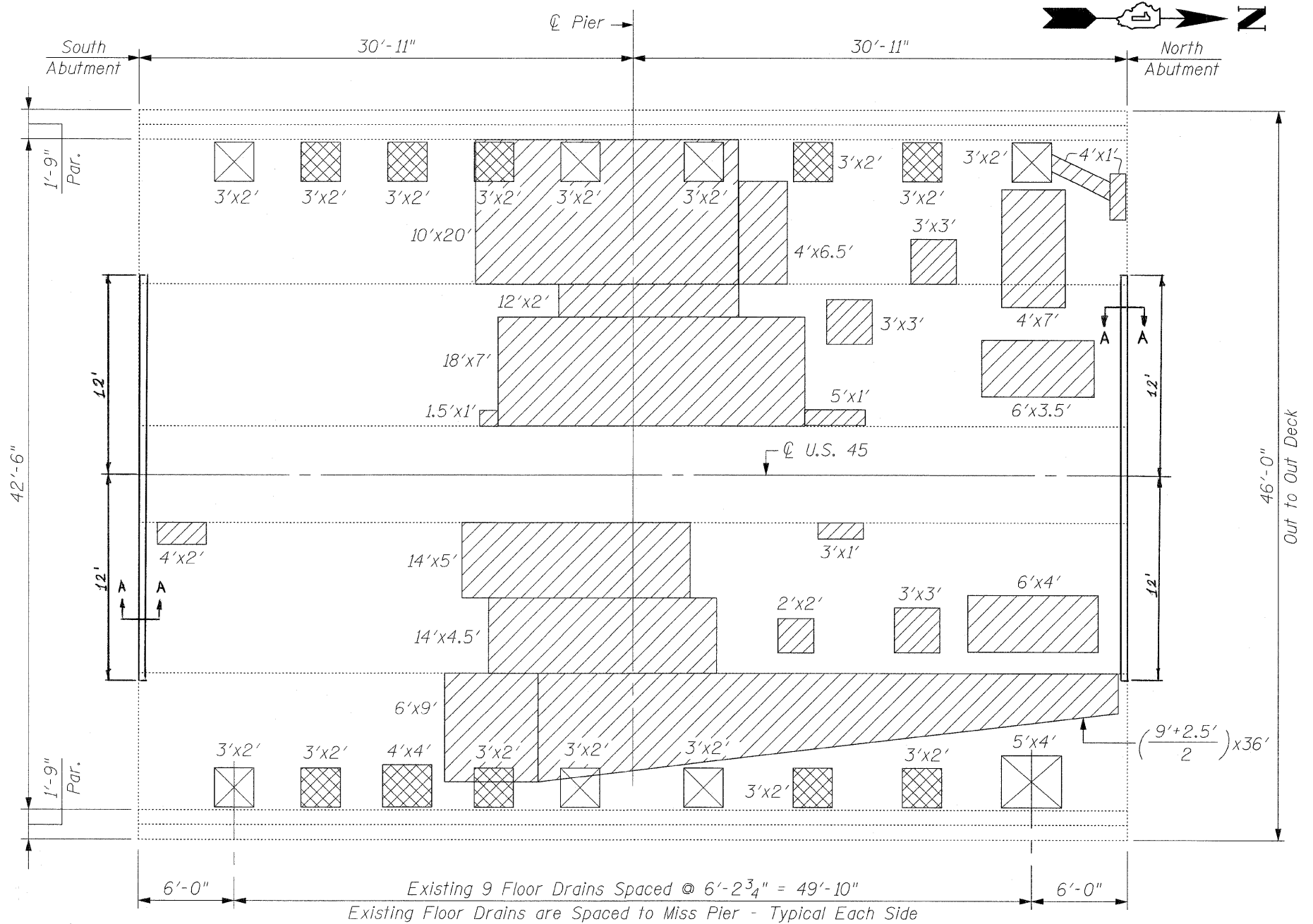
**CR & A** CHRISTIAN ROGE & ASSOCIATES, INC.  
ENGINEERS / PLANNERS / SURVEYORS  
211 W. WACKER DRIVE CHICAGO, IL 60606  
PHONE: (312)372-2023 FAX: (312)372-5274

FILE NAME = deck cross section.sht	USER NAME = IDDT	DESIGNED - B.N.S.	REVISD -	<b>STATE OF ILLINOIS</b> <b>DEPARTMENT OF TRANSPORTATION</b>	<b>DECK CROSS SECTION</b> <b>U.S. 45 / 52 OVER SOUTH BRANCH FORKED CREEK</b> <b>S.N. 099-0121</b>	F.A.P. RTE. 330	SECTION 17 B-2-I-1	COUNTY WILL	TOTAL SHEETS 21	SHEET NO. 12		
PLOT SCALE = 50.0000' / IN.	CHECKED - B.N.S./S.J.P./J.C.N.	DATE - JANUARY 12, 2009	REVISD -			SCALE:	SHEET NO. S2 OF S6 SHEETS	STA.	TO STA.	CONTRACT NO. 60D79		
PLOT DATE = 1/12/2009						FED. ROAD DIST. NO. 1   ILLINOIS FED. AID PROJECT						



**SECTION A-A**

Cost of Polymer Concrete is included in the cost of Bridge Deck Latex Concrete Overlay, 2 1/4"



**PLAN**

**BILL OF MATERIAL**

ITEM	UNIT	QUANTITY
Deck Slab Repair (Full Depth, Type II)	Sq. Yd.	15

**NOTE:**  
INSPECTION WAS CONDUCTED ON SEPTEMBER 28, 2007 BY I.D.O.T. FIELD MAINTENANCE ENGINEERS

**NOTES:**  
Deck Slab Repair (Partial) is Shown for Information Only.  
Locations & Areas of Repairs are Based on Inspections Performed by I.D.O.T.

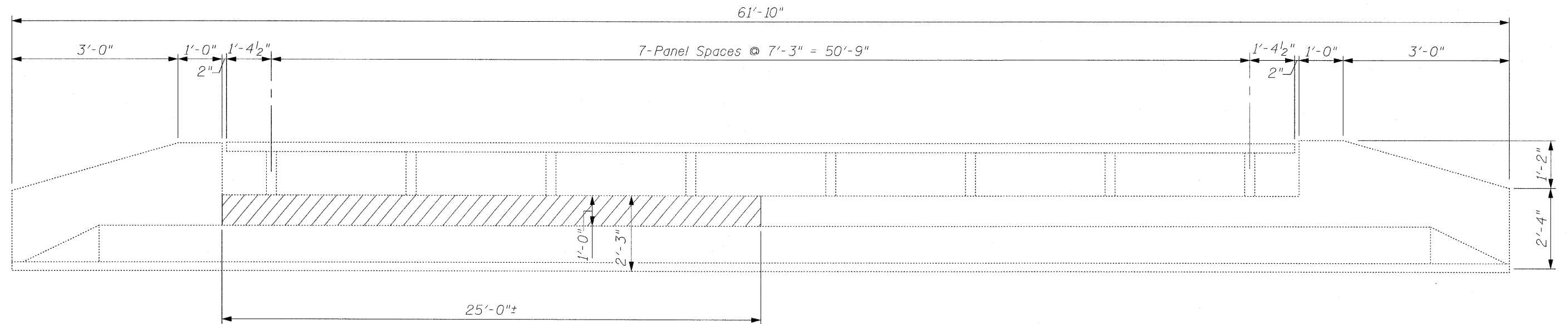
**LEGEND:**

- Deck Slab Repair (Full Depth, Type II), Eliminate Floor Drains
- Deck Slab Repair (Full Depth, Type II), Floor Drains to Remain
- Deck Slab Repair (Partial) = 100 Sq. Yd.


FILE NAME = deck-repair.sht	USER NAME = IDOT	DESIGNED - B.N.S.	REVISED -
		DRAWN - D.L./R.E.S./F.M.	REVISED -
	PLOT SCALE = 50.0000' / IN.	CHECKED - B.N.S./S.J.P./J.C.N.	REVISED -
	PLOT DATE = 1/12/2009	DATE - JANUARY 12, 2009	REVISED -

**STATE OF ILLINOIS  
DEPARTMENT OF TRANSPORTATION**

<b>DECK CONCRETE PATCHING</b>		F.A.P. RTE. NO.	SECTION	COUNTY	TOTAL SHEETS	SHEET NO.
U.S. 45 / 52 OVER SOUTH BRANCH FORKED CREEK		330	17 B-2-1-1	WILL	21	13
S.N. 099-0121		CONTRACT NO. 60D79				
SCALE:	SHEET NO. S3 OF S6 SHEETS	STA.	TO STA.	FED. ROAD DIST. NO. 1 [ILLINOIS] FED. AID PROJECT		




**EAST PARAPET**  
(Inside Face of Parapet)

**LEGEND:**  
 Structural Repair of Concrete  
(Depth Equal to or Less Than 5 in.)

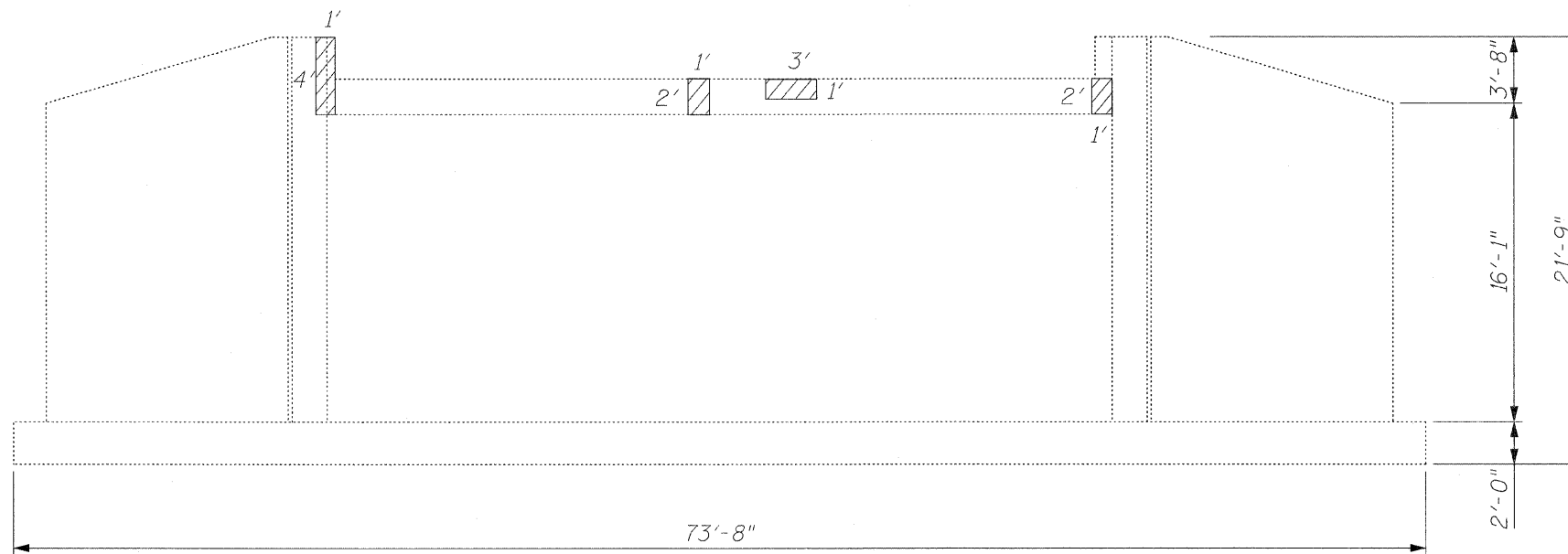
**BILL OF MATERIAL**

ITEM	UNIT	QUANTITY
Structural Repair of Concrete (Depth Equal to or Less Than 5 in.)	Sq. Ft.	25

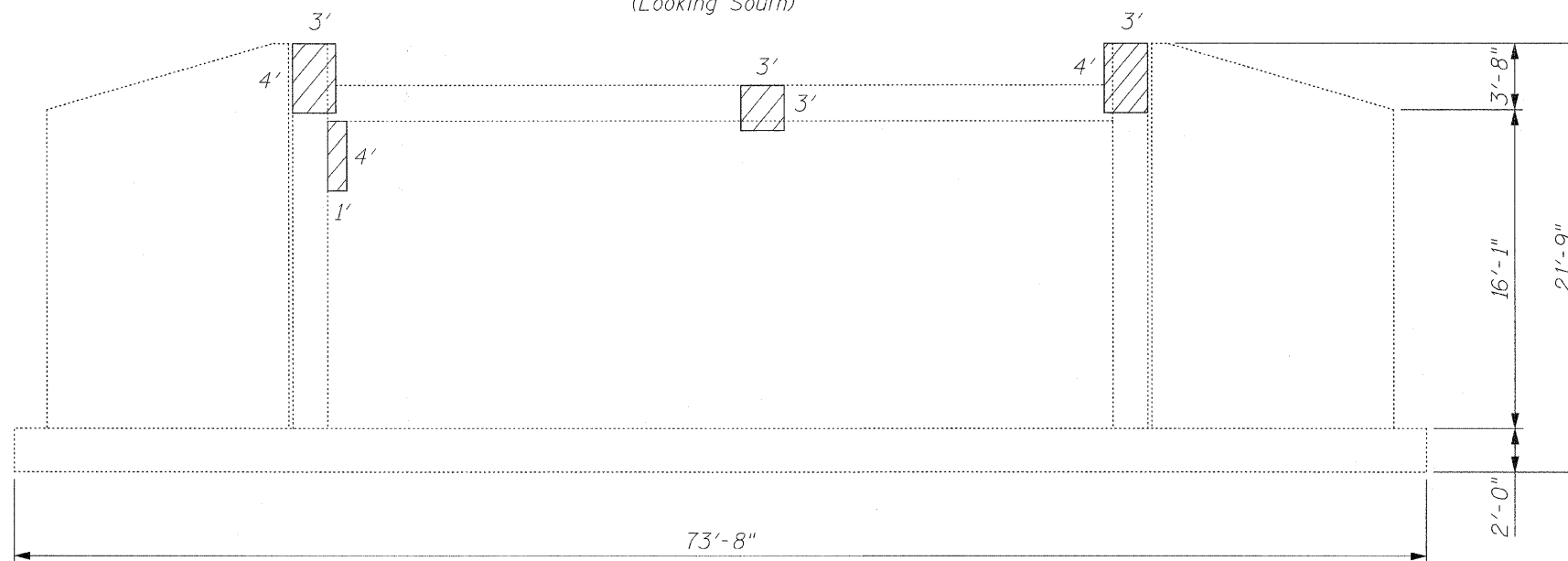


CHRISTIAN-ROGE & ASSOCIATES, INC.  
 ENGINEERS / PLANNERS / SURVEYORS  
 211 W. WACKER DRIVE CHICAGO, IL. 60606  
 PHONE: (312)372-2023 FAX: (312)372-5274

FILE NAME = parapet_repairs.sht	USER NAME = IDOT	DESIGNED - B.N.S.	REVISED -	<b>STATE OF ILLINOIS DEPARTMENT OF TRANSPORTATION</b>	<b>PARAPET REPAIRS U.S. 45 / 52 OVER SOUTH BRANCH FORKED CREEK S.N. 099-0121</b>	F.A.P. RTE. 330	SECTION 17 B-2-I-1	COUNTY WILL	TOTAL SHEETS 21	SHEET NO. 14		
PLOT SCALE = 50.0000' / IN.	CHECKED - B.N.S./S.J.P./J.C.N.	DRAWN - D.L./R.E.S./F.M.	REVISED -			SCALE:	SHEET NO. S4 OF S6 SHEETS	STA.	TO STA.	CONTRACT NO. 60D79		
PLOT DATE = 1/12/2009	DATE - JANUARY 12, 2009					FED. ROAD DIST. NO. 1 ILLINOIS FED. AID PROJECT						



**SOUTH ABUTMENT**  
(Looking South)



**NORTH ABUTMENT**  
(Looking North)

**BILL OF MATERIAL**

ITEM	UNIT	QUANTITY
Structural Repair of Concrete (Depth Equal to or Less Than 5 in.)	Sq. Ft.	48

**LEGEND:**

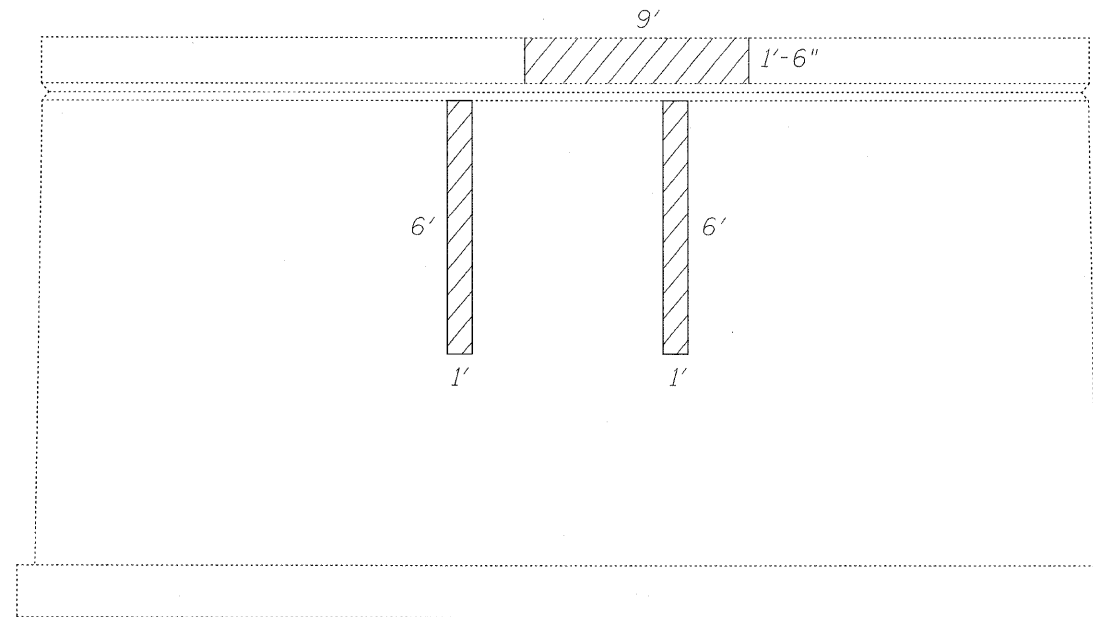


Structural Repair of Concrete  
(Depth Equal to or Less Than 5 in.)  
North Abut. = 37.0 S.F.  
South Abut. = 11.0 S.F.



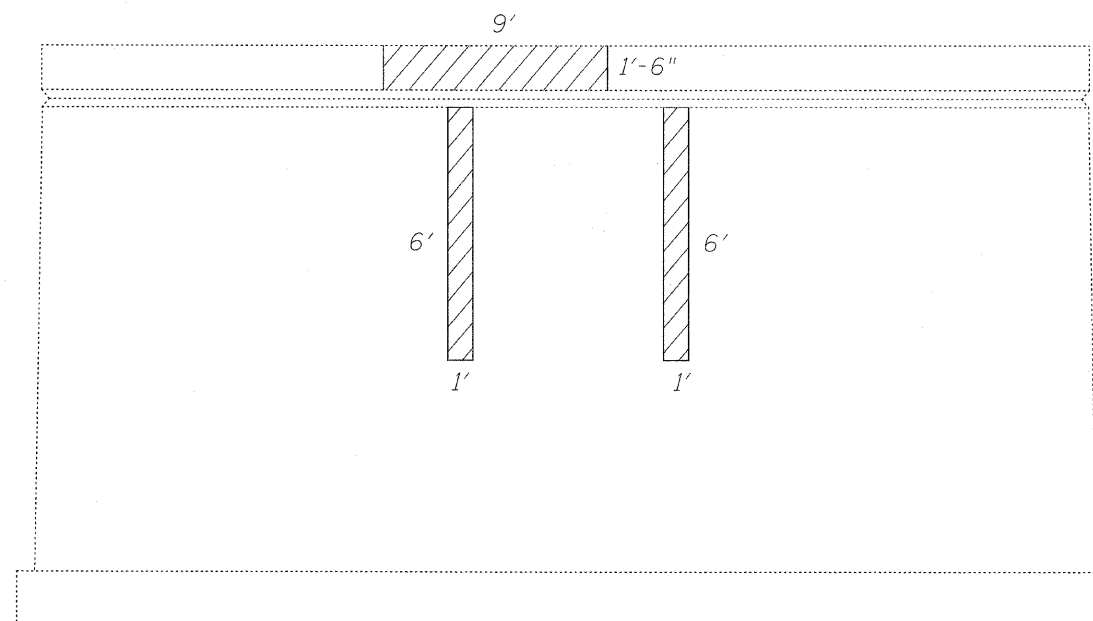
CHRISTIAN-ROGE & ASSOCIATES, INC.  
ENGINEERS / PLANNERS / SURVEYORS  
211 W. WACKER DRIVE CHICAGO, IL. 60606  
PHONE: (312)372-2023 FAX: (312)372-5274

FILE NAME = abutment_repairs.sht	USER NAME = IDDT	DESIGNED - B.N.S.	REVISED -	<b>STATE OF ILLINOIS DEPARTMENT OF TRANSPORTATION</b>	<b>ABUTMENT REPAIRS U.S. 45 / 52 OVER SOUTH BRANCH FORKED CREEK</b>		F.A.P. RTE. 330	SECTION 17 B-2-I-1	COUNTY WILL	TOTAL SHEETS 21	SHEET NO. 15
	PLOT SCALE = 50,000 ' / IN.	DRAWN - D.L./R.E.S./F.M.	REVISED -		<b>S.N. 099-0121</b>				<b>CONTRACT NO. 60D79</b>		
	PLOT DATE = 1/12/2009	CHECKED - B.N.S./S.J.P./J.C.N.	REVISED -		SCALE:	SHEET NO. S6 OF S6 SHEETS	STA.	TO STA.	FED. ROAD DIST. NO. 1 ILLINOIS FED. AID PROJECT		
		DATE - JANUARY 12, 2009	REVISED -								



**NORTH FACE**

**PIER ELEVATION**  
(Looking North)



**SOUTH FACE**

**PIER ELEVATION**  
(Looking South)

**BILL OF MATERIAL**

ITEM	UNIT	QUANTITY
Structural Repair of Concrete (Depth Equal to or Less Than 5 in.)	Sq. Ft.	52

**LEGEND:**



Structural Repair of Concrete  
(Depth Equal to or Less Than 5 in.)  
North Face of Pier = 26.0 S.F.  
South Face of Pier = 26.0 S.F.

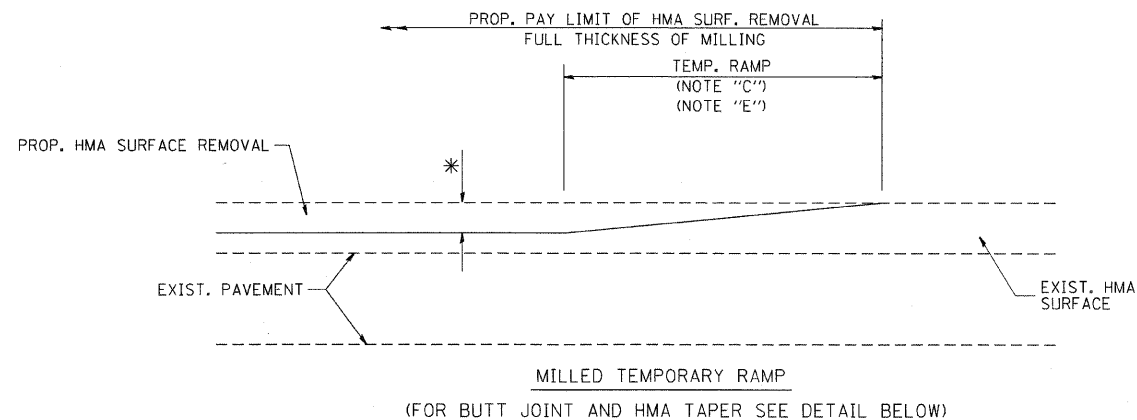
FILE NAME - pier repairs.sht	USER NAME - IDOT	DESIGNED - B.N.S.	REVISED -
		DRAWN - D.L./R.E.S./F.M.	REVISED -
		CHECKED - B.N.S./S.J.P./J.C.N.	REVISED -
		DATE - JANUARY 12, 2009	REVISED -

**STATE OF ILLINOIS**  
**DEPARTMENT OF TRANSPORTATION**

**PIER REPAIRS**  
**U.S. 45 / 52 OVER SOUTH BRANCH FORKED CREEK**  
**S.N. 099-0121**

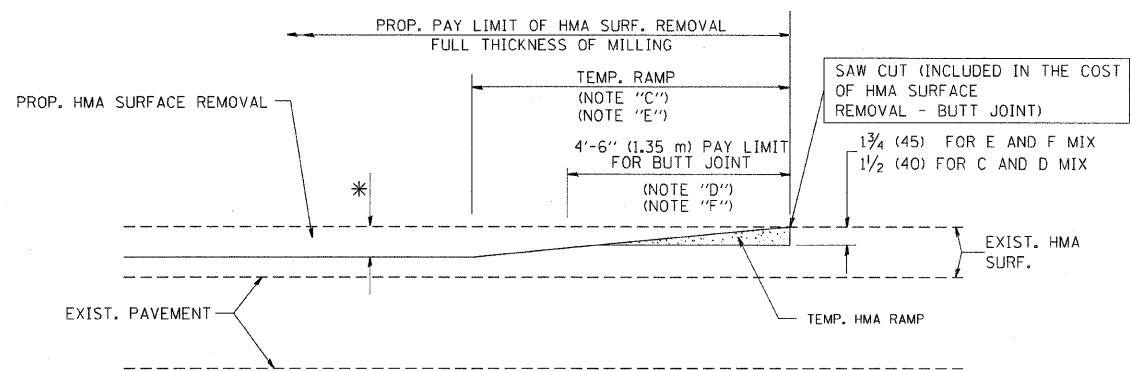
F.A.P. RTE.	SECTION	COUNTY	TOTAL SHEETS	SHEET NO.
330	17 B-2-I-1	WILL	21	16
FED. ROAD DIST. NO. 1 ILLINOIS FED. AID PROJECT			CONTRACT NO. 60D79	





MILLED TEMPORARY RAMP  
(FOR BUTT JOINT AND HMA TAPER SEE DETAIL BELOW)

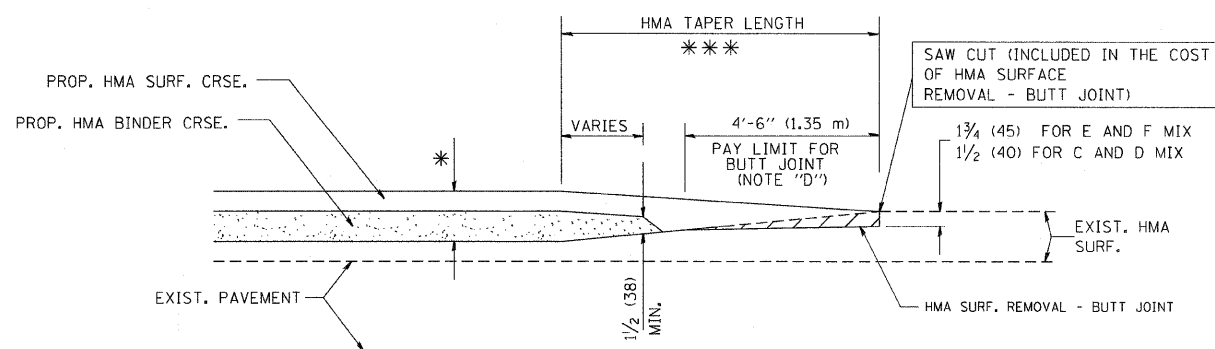
**OPTION 1**



HMA CONSTRUCTED TEMPORARY RAMP  
(FOR BUTT JOINT AND HMA TAPER SEE DETAIL BELOW)

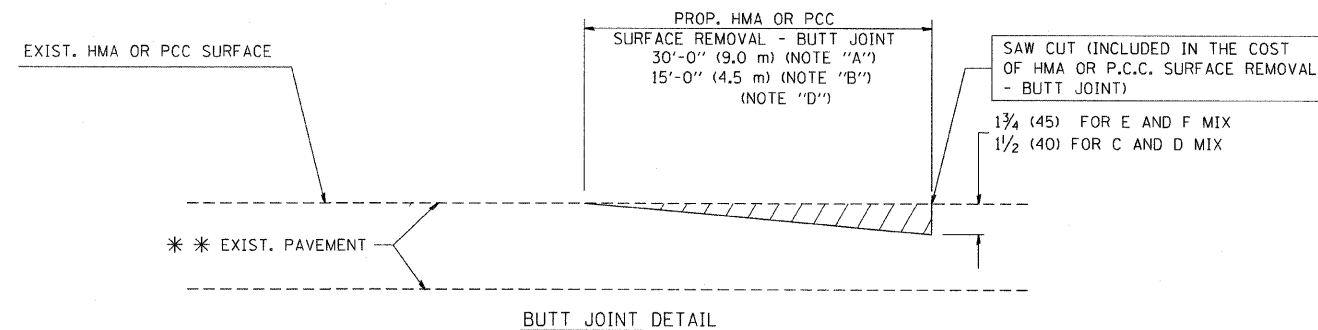
**OPTION 2**

**TYPICAL TEMPORARY RAMP**

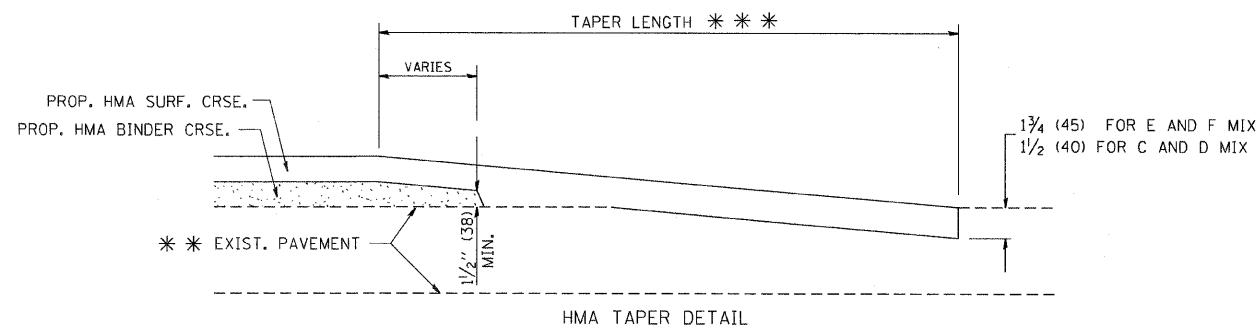


BUTT JOINT AND  
HMA TAPER

**TYPICAL BUTT JOINT AND HMA TAPER  
FOR MILLING AND RESURFACING**



BUTT JOINT DETAIL



HMA TAPER DETAIL

**TYPICAL BUTT JOINT AND HMA TAPER  
FOR RESURFACING ONLY**

\*\*\* PC CONCRETE, HMA OR HMA RESURFACED PAVEMENT.

**NOTES**

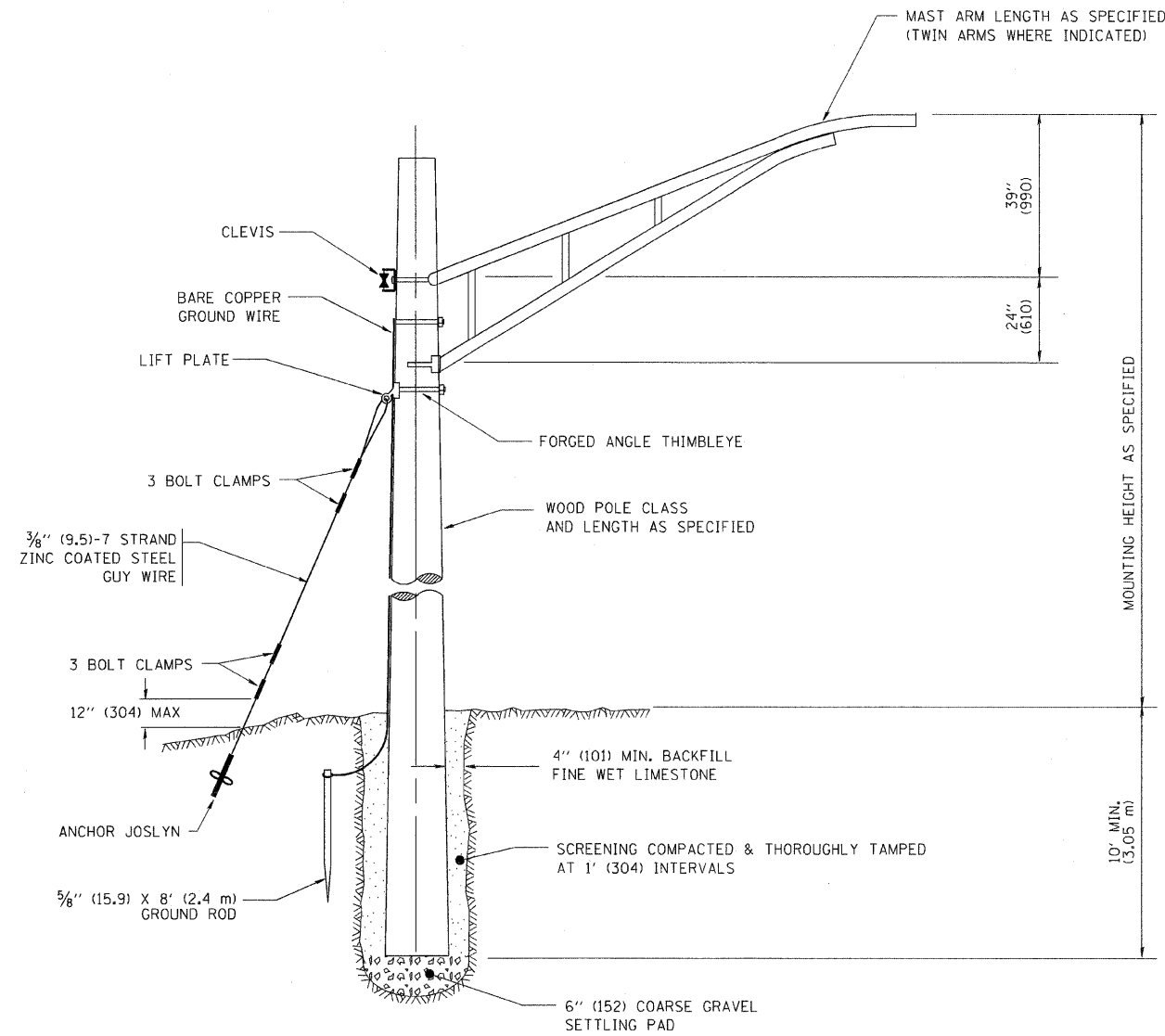
- A: MAINLINE ROADWAYS AND MAJOR SIDE ROADS.
  - B: MINOR SIDE ROADS.
  - C: THE TEMP. RAMP SHALL BE CONSTRUCTED IMMEDIATELY UPON REMOVAL OF THE EXISTING HMA SURFACE.
  - D: THE BUTT JOINT SHALL BE CONSTRUCTED IMMEDIATELY PRIOR TO PLACING THE PROPOSED HMA COURSES.
  - E: TAPER THE TEMP. RAMP AT A RATE OF 3'-0" (900 mm) PER 1 INCH (25 mm) OF MILLING THICKNESS.
  - F: INSTALLATION AND REMOVAL OF THE 4'-6" (1.35 m) TEMP. RAMP IS INCLUDED IN COST OF HMA SURFACE REMOVAL - BUTT JOINT
  - G: SEE ARTICLE 406.08 AND 406.14 OF THE STANDARD SPECIFICATIONS FOR "HMA AND/OR PCC SURFACE REMOVAL, BUTT JOINT".
- \* SEE TYPICAL SECTIONS FOR MILLING THICKNESS.
- \*\*\* 20'-0" (6.1 m) PER 1 (25) RESURFACING (NOTE "A")  
10'-0" (3.0 m) PER 1 (25) RESURFACING (NOTE "B")

**BASIS OF PAYMENT:**

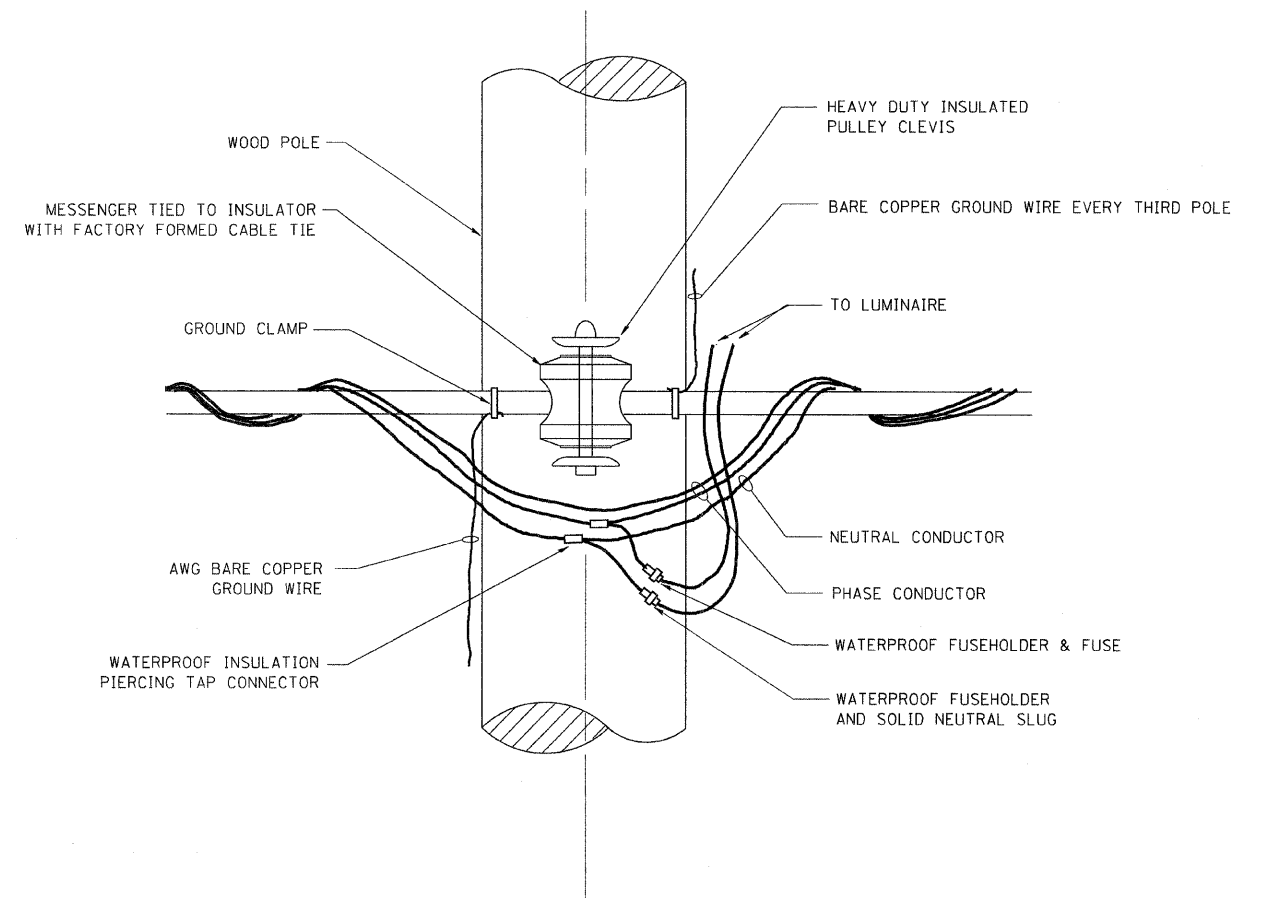
THE BUTT JOINT WILL BE PAID FOR AT THE CONTRACT UNIT PRICE PER SQUARE YARD (SQUARE METER) FOR "HOT-MIX ASPHALT SURFACE REMOVAL - BUTT JOINT" OR FOR "PORTLAND CEMENT CONCRETE SURFACE REMOVAL - BUTT JOINT".

ALL DIMENSIONS ARE IN INCHES (MILLIMETERS) UNLESS OTHERWISE SHOWN.

FILE NAME = W:\diststd\22x34\bd32.dgn	USER NAME = gegl:enobt	DESIGNED - M. DE YONG	REVISED - R. SHAH 10-25-94	<b>STATE OF ILLINOIS DEPARTMENT OF TRANSPORTATION</b>	<b>BUTT JOINT AND HMA TAPER DETAILS</b>	F.A.P. RITE: 330	SECTION 17B-24-1	COUNTY WILL	TOTAL SHEETS 21	SHEET NO. 17
PLOT SCALE = 50,0000 "/>										



TEMPORARY LIGHT POLE DETAIL

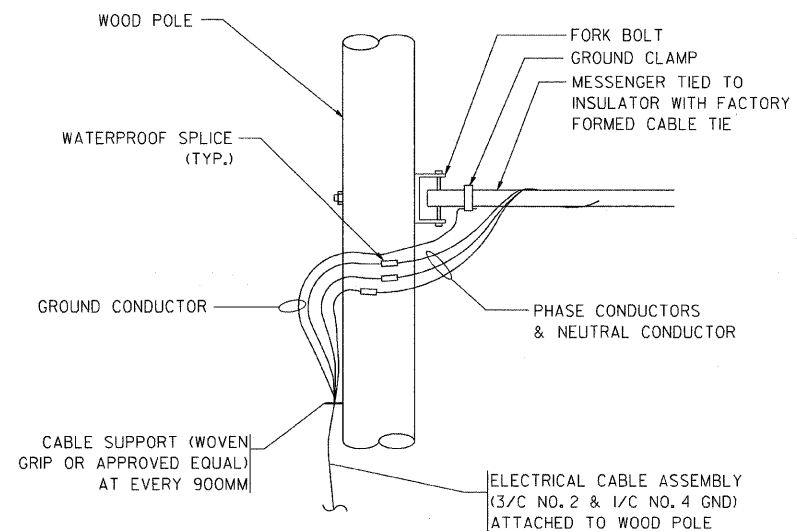


TEMPORARY LIGHT POLE ATTACHMENT DETAIL

NOTES:

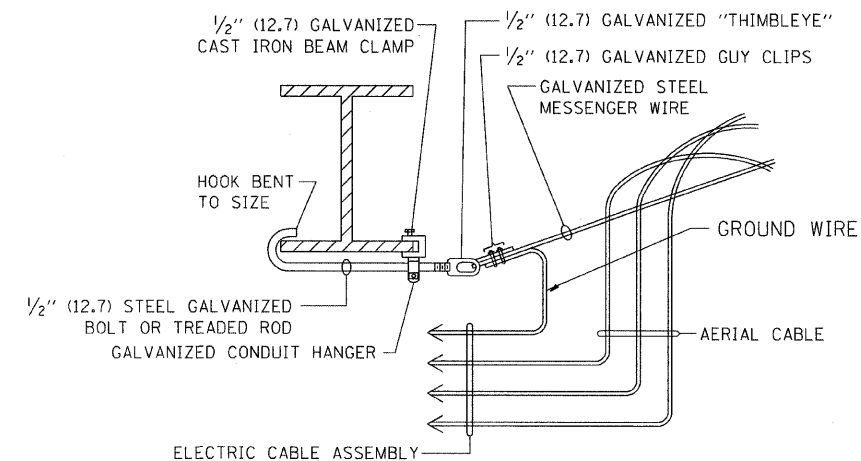
1. ALL DIMENSIONS IN INCHES (MILLIMETERS) UNLESS OTHERWISE INDICATED

FILE NAME = W:\diststd\22x34\be900.dgn	USER NAME = gegl:anobt	DESIGNED -	REVISED - 08-08-03	<b>STATE OF ILLINOIS DEPARTMENT OF TRANSPORTATION</b>	<b>TEMPORARY LIGHT POLE DETAILS</b>			F.A.P. RTE:	SECTION	COUNTY	TOTAL SHEETS	SHEET NO.	
	PLOT SCALE = 50.000 ' / IN.	DRAWN -	REVISED -		SCALE: NONE	SHEET NO. 1 OF 1 SHEETS	STA. 750+00	TO STA. 764+00	330	17B-24-1	WILL	21	18
	PLOT DATE = 1/4/2008	CHECKED -	REVISED -					<b>BE-800</b>			<b>CONTRACT NO. 60D79</b>		
		DATE -	REVISED -		FED. ROAD DIST. NO. 1 ILLINOIS FED. AID PROJECT								



**AERIAL CABLE CONNECTION DETAIL**

N.T.S.

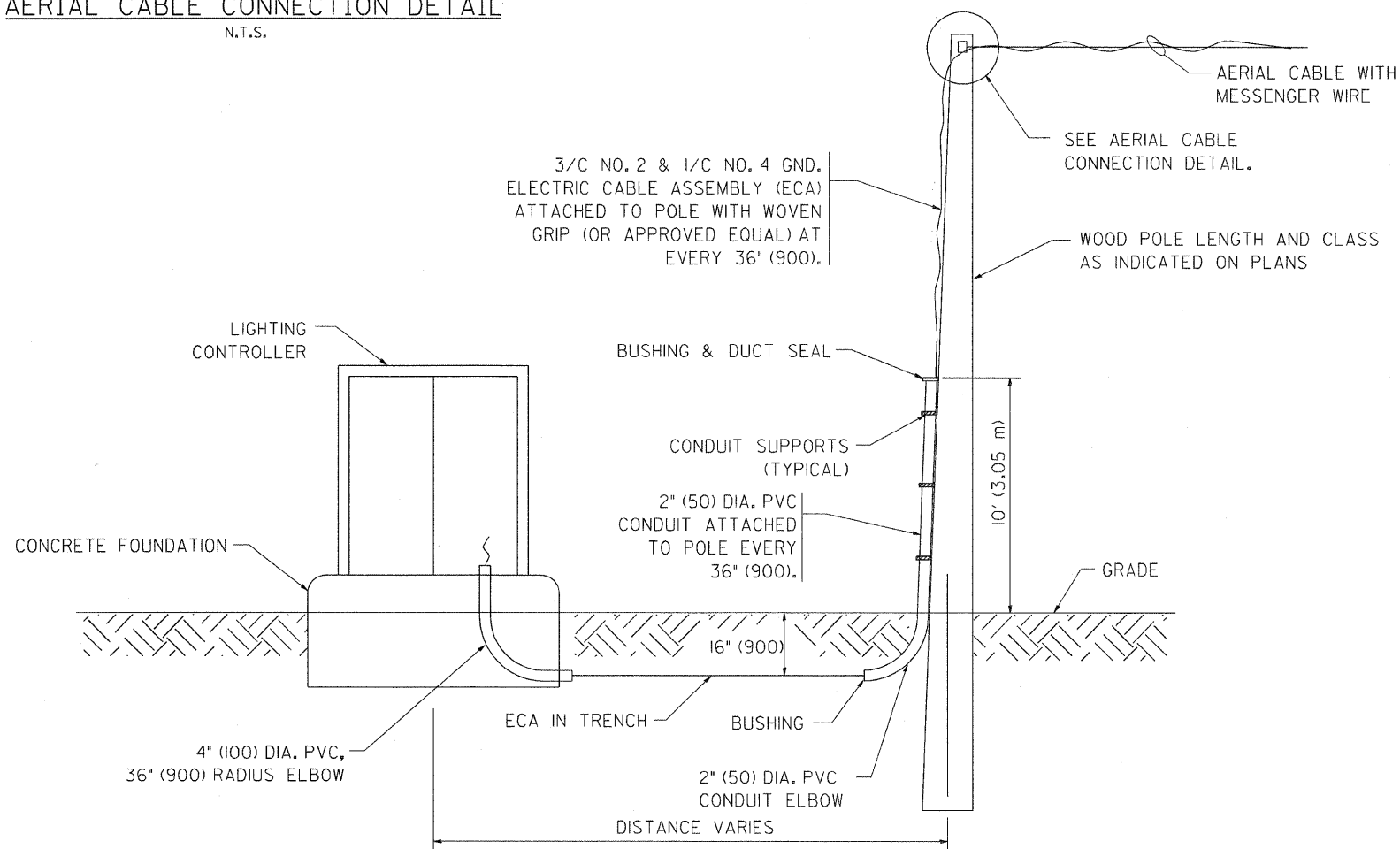


**AERIAL CABLE ATTACHED TO STRUCTURE**

NOT TO SCALE

**NOTES:**

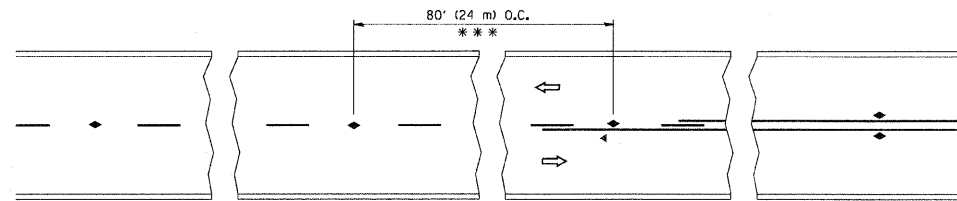
1. ALL DIMENSIONS IN INCHES (MILLIMETERS) UNLESS OTHERWISE INDICATED.
2. SEE PROPOSED LIGHTING PLAN FOR CONDUIT, CABLE AND ROUTING.
3. THE CONTRACTOR SHALL PROVIDE INTERMEDIATE SUPPORTS TO MAINTAIN MINIMUM CLEARANCES. REFER TO AERIAL AERIAL CABLE ATTACHED TO STRUCTURE DETAIL.
4. COST OF SPLICES AND MOUNTING HARDWARE SHALL BE INCLUDED IN THE UNIT PRICE FOR AERIAL CABLE.



**WOOD POLE TO LIGHTING CONTROLLER WIRING CONNECTION DETAIL**

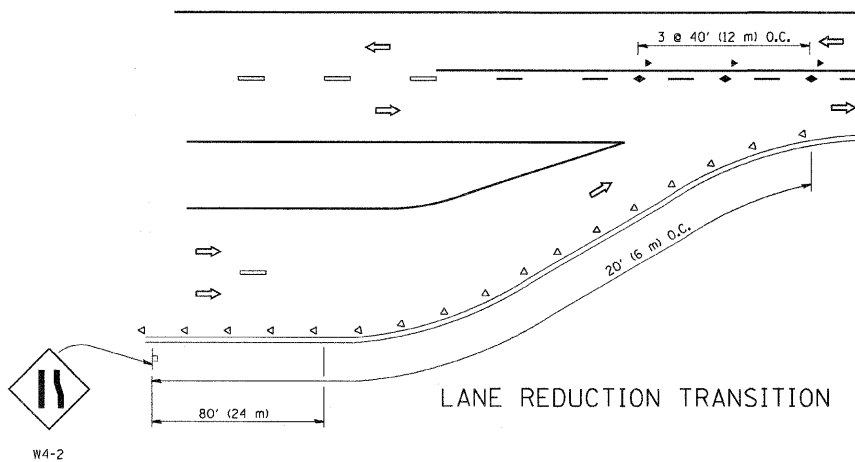
N.T.S.

FILE NAME = W:\diststd\22x34\be801.dgn	USER NAME = gegl:enobt	DESIGNED - DRAWN -	REVISED - 08-08-03 REVISED -	<b>STATE OF ILLINOIS DEPARTMENT OF TRANSPORTATION</b>	<b>TEMPORARY AERIAL CABLE INSTALLATION</b>			F.A.P. RTE. 330	SECTION 17 B-24-1	COUNTY WILL	TOTAL SHEETS 21	SHEET NO. 19
PLOT SCALE = 50,000' / IN.	PLOT DATE = 1/4/2008	CHECKED - DATE -	REVISED - REVISED -		SCALE: NONE	SHEET NO. 1 OF 1 SHEETS	STA. 750+00	TO STA. 764+00	<b>BE-801</b>		<b>CONTRACT NO. 60D79</b>	
FED. ROAD DIST. NO. 1 ILLINOIS FED. AID PROJECT												

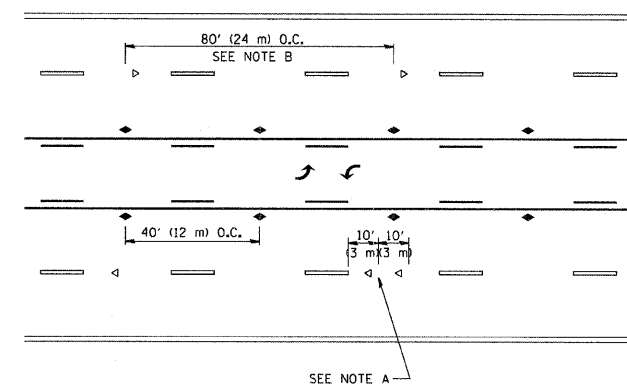


\*\*\* REDUCE TO 40' (12 m) O.C. ON CURVES WITH POSTED OR ADVISORY SPEED 45 M.P.H. (70 km/h) OR LESS.

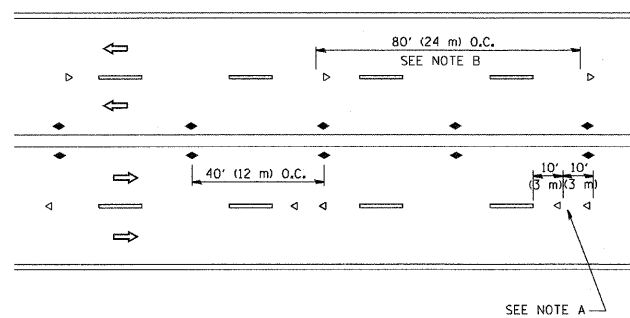
TWO-LANE/TWO-WAY



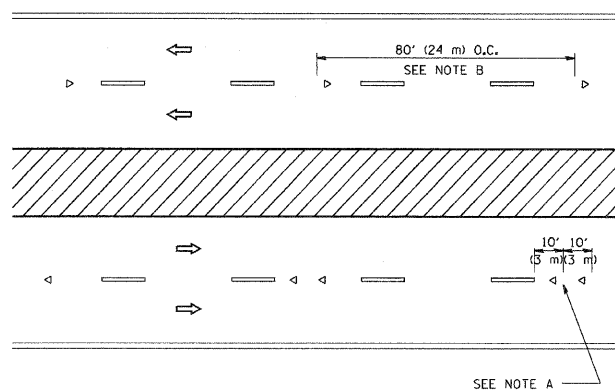
LANE REDUCTION TRANSITION



TWO-WAY LEFT TURN



MULTI-LANE/UNDIVIDED



MULTI-LANE/DIVIDED

GENERAL NOTES

1. MARKERS USED WITH DASHED LINES SHALL BE CENTERED IN THE GAP BETWEEN SEGMENTS.
2. MARKERS USED ADJACENT TO SOLID LINES SHALL BE OFFSET 2 TO 3 (50 TO 75) TOWARD TRAFFIC AS SHOWN.
3. MARKERS THROUGH TANGENTS LESS THAN 500' (150 m) IN LENGTH BETWEEN CURVES SHALL BE INSTALLED AT THE LESSER OF THE TWO CURVE SPACINGS.

SYMBOLS

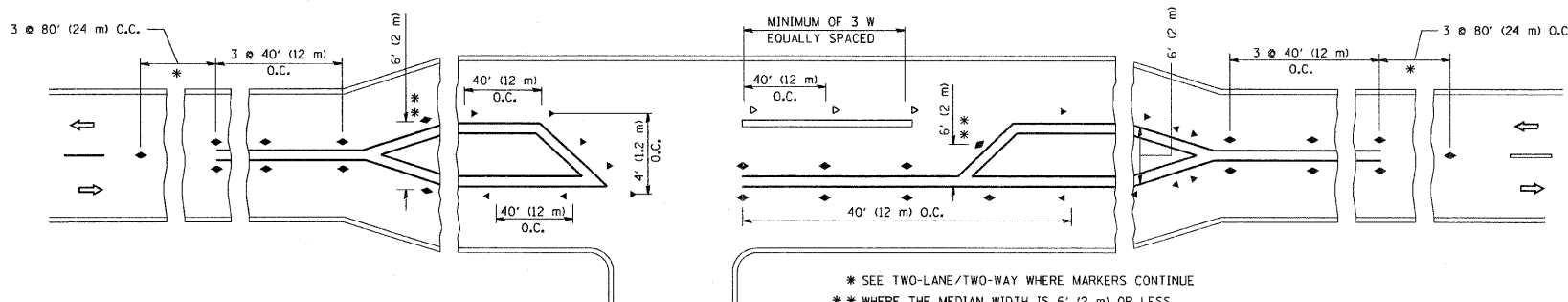
- YELLOW STRIPE
- WHITE STRIPE
- ◀ ONE-WAY AMBER MARKER
- ◁ ONE-WAY CRYSTAL MARKER (W/O)
- ◆ TWO-WAY AMBER MARKER

LANE MARKER NOTES

- B. REDUCE TO 40' (12 m) O.C. ON CURVES WHERE ADVISORY SPEEDS ARE 10 M.P.H (20 km/h) LOWER THAN POSTED SPEEDS.
- A. USE DOUBLE LANE LINE MARKERS SPACED AS SHOWN.

DESIGN NOTES

1. DOUBLE LANE LINE MARKERS SHALL BE USED UNLESS SPECIFIED OTHERWISE.
2. EXCEPT AS SHOWN ON THE LANE REDUCTION TRANSITION AND FREEWAY EXIT RAMP DETAIL, MARKERS ARE NOT TO BE SPECIFIED ON RIGHT EDGE LINES.
3. THE EXACT MARKER LIMITS, SPACING, AND COLOR SHOULD BE INCLUDED IN THE PLANS.
4. MARKERS SHOULD NOT BE USED ALONGSIDE CURBS EXCEPT FOR EXTREMELY SHORT SECTIONS OF CURBS WHERE NOT MORE THAN TWO MARKERS WOULD BE INVOLVED.

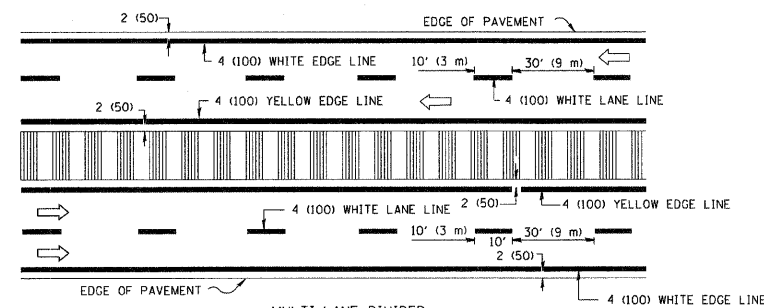
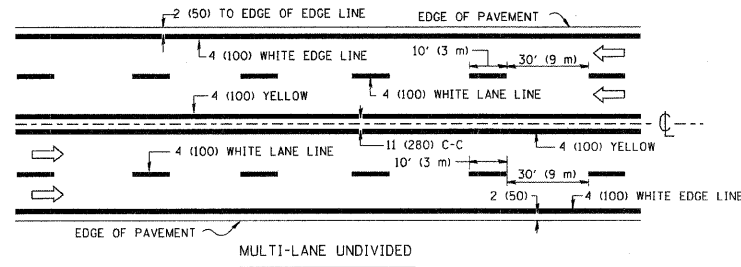
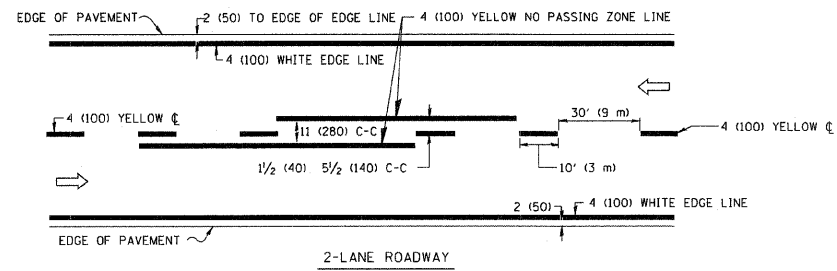


LEFT TURN

\* SEE TWO-LANE/TWO-WAY WHERE MARKERS CONTINUE  
 \*\* WHERE THE MEDIAN WIDTH IS 6' (2 m) OR LESS USE TWO-WAY MARKERS.

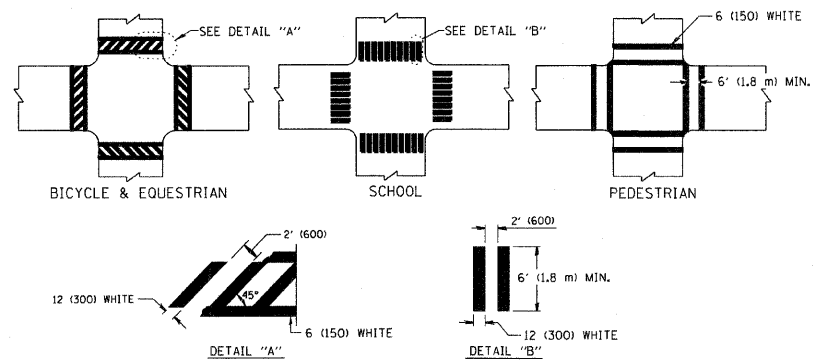
All dimensions are in inches (millimeters) unless otherwise shown.

FILE NAME = W:\diststd\22x34\to11.dgn	USER NAME = geglennobt	DESIGNED -	REVISED - T. RAMMACHER 09-19-94	<b>STATE OF ILLINOIS DEPARTMENT OF TRANSPORTATION</b>	<b>TYPICAL APPLICATIONS RAISED REFLECTIVE PAVEMENT MARKERS (SNOW-PLOW RESISTANT)</b>			F.A.P. RTE. 330	SECTION 17 B-2-1	COUNTY WILL.	TOTAL SHEETS 21	SHEET NO. 20	
	PLOT SCALE = 50,000 "/ IN.	DRAWN -	REVISED - T. RAMMACHER 03-12-99		SCALE: NONE	SHEET NO. 1	OF 1	SHEETS	STA. 750+00	TO STA. 764+00	<b>TC-11</b>		CONTRACT NO. 60D79
	PLOT DATE = 1/4/2008	CHECKED -	REVISED - T. RAMMACHER 01-06-00		FED. ROAD DIST. NO. 1   ILLINOIS FED. AID PROJECT								
		DATE -	REVISED -										

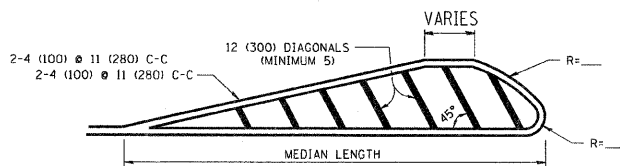
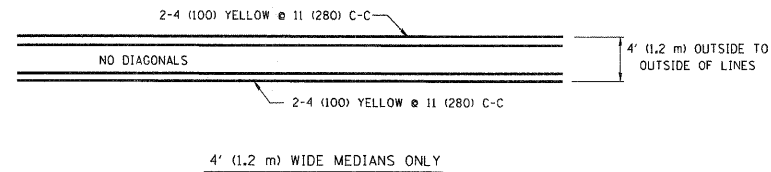


NOTE: MEDIANS WITH BARRIER CURB DO NOT REQUIRE AN EDGE LINE

**TYPICAL LANE AND EDGE LINE MARKING**

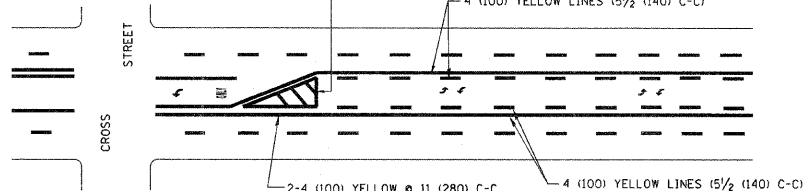


**TYPICAL CROSSWALK MARKING**

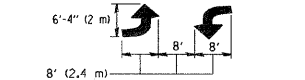


FOR MEDIAN LENGTHS WHERE DIAGONAL SPACING CANNOT BE ATTAINED, USE 5 (FIVE) EQUALLY SPACED DIAGONAL LINES.  
 DIAGONAL LINE SPACING: 50' (15 m) C-C (LESS THAN 30MPH (50 km/h))  
 75' (25 m) C-C (30MPH (50 km/h) TO 45MPH (70 km/h))  
 150' (45 m) C-C (MORE THAN 45MPH (70 km/h))

**MEDIANS OVER 4' (1.2 m) WIDE**

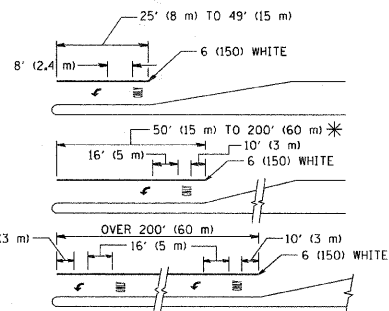


A MINIMUM OF TWO PAIRS OF TURN ARROWS SHALL BE USED, WHITE IN COLOR. ADDITIONAL PAIRS SHALL BE PLACED AT 200' (60 m) TO 300' (90 m) INTERVALS.



**MEDIAN WITH TWO-WAY LEFT TURN LANE**

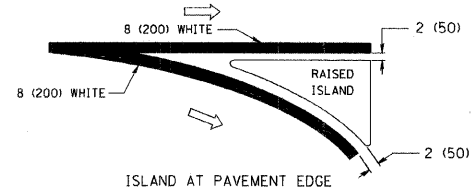
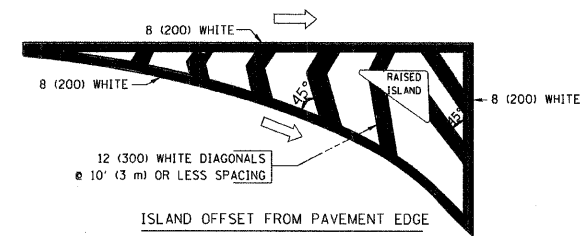
**TYPICAL PAINTED MEDIAN MARKING**



FULL SIZE LETTERS 8' (2.4 m) AND ARROWS SHALL BE USED.  
 \* AREA = 15.6 SQ. FT. (1.5 m<sup>2</sup>) ONLY AREA = 20.8 SQ. FT. (1.9 m<sup>2</sup>)  
 \* TURN LANES IN EXCESS OF 400' (120 m) IN LENGTH MAY HAVE AN ADDITIONAL SET OF ARROW - "ONLY" INSTALLED MIDWAY BETWEEN THE OTHER TWO SETS OF ARROW - "ONLY".

**TYPICAL LEFT (OR RIGHT) TURN LANE**

**TYPICAL TURN LANE MARKING**



**TYPICAL ISLAND MARKING**

TYPE OF MARKING	WIDTH OF LINE	PATTERN	COLOR	SPACING / REMARKS
CENTERLINE ON 2 LANE PAVEMENT	4 (100)	SKIP-DASH	YELLOW	10' (3 m) LINE WITH 30' (9 m) SPACE
CENTERLINE ON MULTI-LANE UNDIVIDED PAVEMENT	2 @ 4 (100)	SOLID	YELLOW	11 (280) C-C
NO PASSING ZONE LINES FOR ONE DIRECTION FOR BOTH DIRECTIONS	4 (100) 2 @ 4 (100)	SOLID SOLID	YELLOW YELLOW	5 1/2 (140) C-C FROM SKIP-DASH CENTERLINE 11 (280) C-C OMIT SKIP-DASH CENTERLINE BETWEEN
LANE LINES	4 (100) 5 (125) ON FREEWAYS	SKIP-DASH SKIP-DASH	WHITE WHITE	10' (3 m) LINE WITH 30' (9 m) SPACE
DOTTED LINES (EXTENSIONS OF CENTER, LANE OR TURN LANE MARKINGS)	SAME AS LINE BEING EXTENDED	SKIP-DASH	SAME AS LINE BEING EXTENDED	2' (600) LINE WITH 6' (1.8 m) SPACE
EDGE LINES	4 (100)	SOLID	YELLOW-LEFT WHITE-RIGHT	OUTLINE MOUNTABLE MEDIANS IN YELLOW; EDGE LINES ARE NOT USED NEXT TO BARRIER CURB
TURN LANE MARKINGS	6 (150) LINE; FULL SIZE LETTERS & SYMBOLS (8' (2.4m))	SOLID	WHITE	SEE TYPICAL TURN LANE MARKING DETAIL
TWO WAY LEFT TURN MARKING	2 @ 4 (100) EACH DIRECTION 8' (2.4m) LEFT ARROW	SKIP-DASH AND SOLID IN PAIRS	YELLOW WHITE	10' (3 m) LINE WITH 30' (9 m) SPACE FOR SKIP-DASH; 5 1/2 (140) C-C BETWEEN SOLID LINE AND SKIP-DASH LINE SEE TYPICAL TWO-WAY LEFT TURN MARKING DETAIL
CROSSWALK LINES (PEDESTRIAN) A. DIAGONALS (BIKE & EQUESTRIAN) B. LONGITUDINAL BARS (SCHOOL)	2 @ 6 (150) 12 (300) @ 45° 12 (300) @ 90°	SOLID SOLID SOLID	WHITE WHITE WHITE	NOT LESS THAN 6' (1.8 m) APART 2' (600) APART SEE TYPICAL CROSSWALK MARKING DETAILS.
STOP LINES	24 (600)	SOLID	WHITE	PLACE 4' (1.2 m) IN ADVANCE OF AND PARALLEL TO CROSSWALK, IF PRESENT. OTHERWISE, PLACE AT DESIRED STOPPING POINT, PARALLEL TO CROSSROAD CENTERLINE, WHERE POSSIBLE
PAINTED MEDIANS	2 @ 4 (100) WITH 12 (300) DIAGONALS @ 45° NO DIAGONALS USED FOR 4' (1.2 m) WIDE MEDIANS	SOLID	YELLOW; TWO WAY TRAFFIC WHITE; ONE WAY TRAFFIC	11 (280) C-C FOR THE DOUBLE LINE SEE TYPICAL PAINTED MEDIAN MARKING.
GORE MARKING AND CHANNELIZING LINES	8 (200) WITH 12 (300) DIAGONALS @ 45°	SOLID	WHITE	DIAGONALS: 15' (4.5 m) C-C (LESS THAN 30MPH (50 km/h)) 20' (6 m) C-C (30MPH (50 km/h) TO 45MPH (70 km/h)) 30' (9 m) C-C (OVER 45MPH (70 km/h))
RAILROAD CROSSING	24 (600) TRANSVERSE LINES; "RR" IS 6' (1.8 m) LETTERS; 16 (400) LINE FOR "X"	SOLID	WHITE	SEE STATE STANDARD 780001 AREA OF: "R"=3.6 SQ. FT. (0.33 m <sup>2</sup> ) EACH "X"=54.0 SQ. FT. (5.0 m <sup>2</sup> )
SHOULDER DIAGONALS	12 (300) @ 45°	SOLID	WHITE - RIGHT YELLOW - LEFT	50' (15 m) C-C (LESS THAN 30MPH (50 km/h)) 75' (25 m) C-C (30 MPH (50 km/h) TO 45MPH (70 km/h)) 150' (45 m) C-C (OVER 45MPH (70 km/h))

FOR FURTHER DETAILS ON PAVEMENT MARKING REFER TO STANDARD SPECIFICATIONS FOR ROAD AND BRIDGE CONSTRUCTION AND STATE STANDARD 780001.

All dimensions are in inches (millimeters) unless otherwise shown.

FILE NAME = W:\distatd\22x34\cal3.dgn	USER NAME = geglernobt	DESIGNED - EVERS	REVISED -T, RAMMACHER 10-27-94
		DRAWN -	REVISED -A, HOUSEH 10-09-96
	PLOT SCALE = 50,000 1/ IN.	CHECKED -	REVISED -A, HOUSEH 10-17-96
	PLOT DATE = 1/4/2008	DATE - 03-19-90	REVISED -T, RAMMACHER 01-06-00

**STATE OF ILLINOIS  
DEPARTMENT OF TRANSPORTATION**

**DISTRICT ONE  
TYPICAL PAVEMENT MARKINGS**

SCALE: NONE SHEET NO. 1 OF 1 SHEETS STA. 750+00 TO STA. 764+00

F.A.P. RTE. 330	SECTION 17B-24-1	COUNTY WILL	TOTAL SHEETS 21	SHEET NO. 21
TC-13		CONTRACT NO. 60D79		
FED. ROAD DIST. NO. 1 ILLINOIS FED. AID PROJECT				