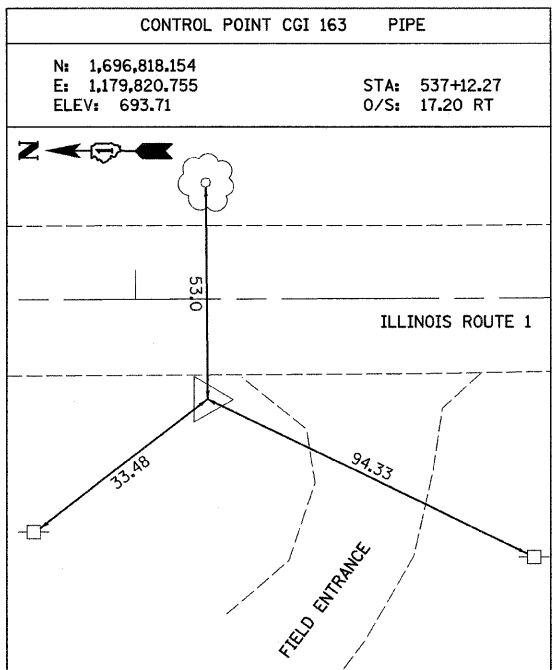
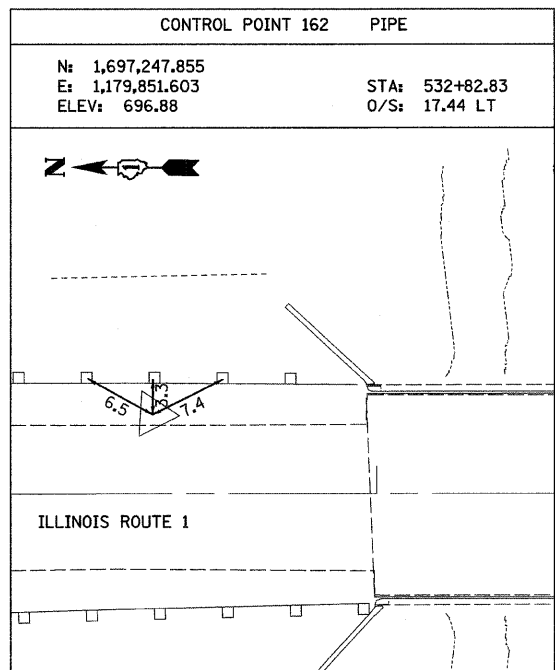
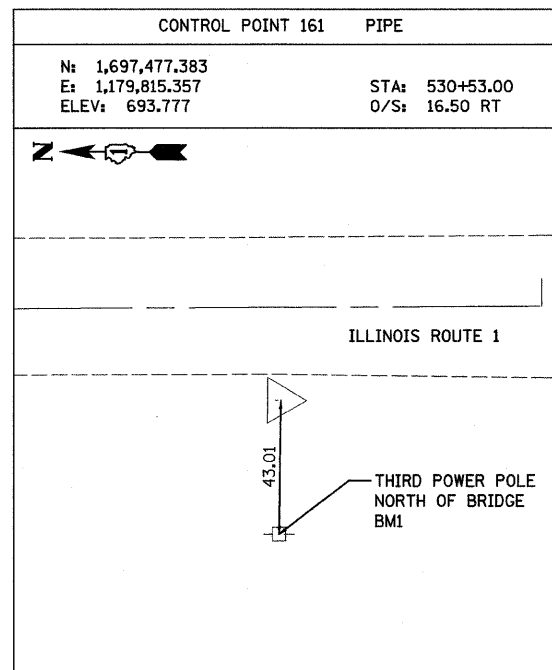
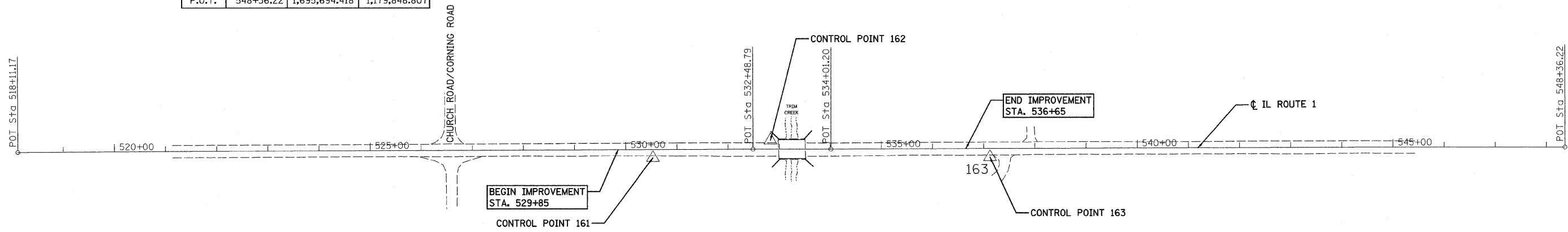


ILLINOIS ROUTE 1 CENTERLINE			
DESCRIPTION	NORTHING	EASTING	
P.O.T.	518+11.17	1,698,719.317	1,179,818.641
P.O.T.	532+48.79	1,697,281.777	1,179,833.940
P.O.T.	534+01.20	1,697,129.367	1,179,834.952
P.O.T.	548+36.22	1,695,694.418	1,179,848.807



FILE NAME: n:\pro\332\332%_25\Design\ProposedPlan\332%_25-94-Alignment.dgn

Ciorba Group, Inc.
 CONSULTING ENGINEERS
 5507 North Cumberland Avenue, Suite 402
 Chicago, Illinois 60656
 Tel. 773.775.4009 Fax 773.775.4014

USER NAME = wlanoster	DESIGNED - JCC	REVISED -
PLOT SCALE = 100.0000' / IN.	DRAWN - JCC	REVISED -
PLOT DATE = 1/13/2009	CHECKED - MJL	REVISED -
	DATE - 05/15/2008	REVISED -

**STATE OF ILLINOIS
 DEPARTMENT OF TRANSPORTATION**

**FAP 332 / ILLINOIS ROUTE 1
 OVER TRIM CREEK
 ALIGNMENT AND CONTROL POINTS**

SCALE: 1"=100' SHEET NO. OF SHEETS STA. TO STA.

F.A.P. RTE.	SECTION	COUNTY	TOTAL SHEETS	SHEET NO.
332	8 R-B-1-2	WILL	28	4
FED. ROAD DIST. NO. ILLINOIS FED. AID PROJECT			CONTRACT NO. 60D81	