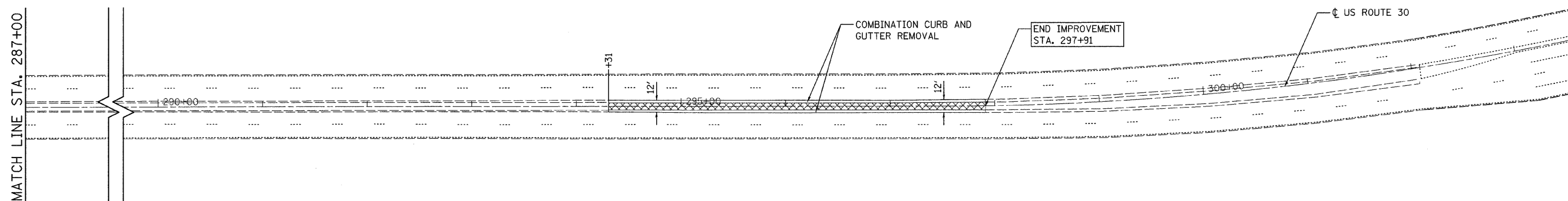
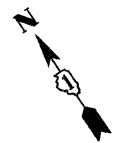


**LEGEND**

- MEDIAN REMOVAL
- P.C.C. SURFACE REMOVAL - BUTT JOINT  
(SEE BUTT JOINT AND HMA TAPER DETAIL)



NOTE: EXISTING PAVEMENT CONSISTS OF 12" OF PORTLAND CEMENT CONCRETE PAVEMENT.

FILE NAME = n:\proj\3129\3129\_20\design\proposed\plan\3129\_26\_gf5-Removal.dgn



**Ciorba Group, Inc.**  
CONSULTING ENGINEERS  
6507 North Cumberland Avenue, Suite 402  
Chicago, Illinois 60656  
Tel. 773.775.4009 Fax 773.775.4014

USER NAME = wlancaaster	DESIGNED - JCC	REVISED -
PLOT SCALE = 51.0058' / IN.	DRAWN - JCC	REVISED -
PLOT DATE = 1/13/2009	CHECKED - MJL	REVISED -
	DATE - 01/30/08	REVISED -

**STATE OF ILLINOIS  
DEPARTMENT OF TRANSPORTATION**

**FAP 349 / US ROUTE 30  
OVER RIVER STREET  
EXISTING CONDITIONS & REMOVAL PLAN**

SCALE: 1"=50' SHEET NO. OF SHEETS STA. TO STA.

F.A.P. RTE.	SECTION	COUNTY	TOTAL SHEETS	SHEET NO.
349	11 HB-1	KENDALL	26	5
CONTRACT NO. 60D83				
FED. ROAD DIST. NO. - ILLINOIS FED. AID PROJECT				