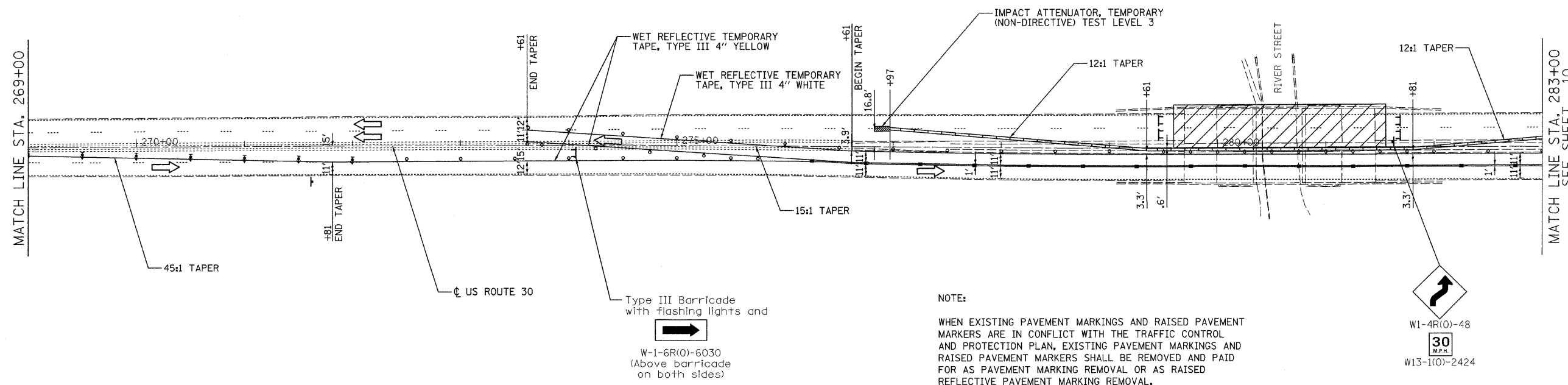
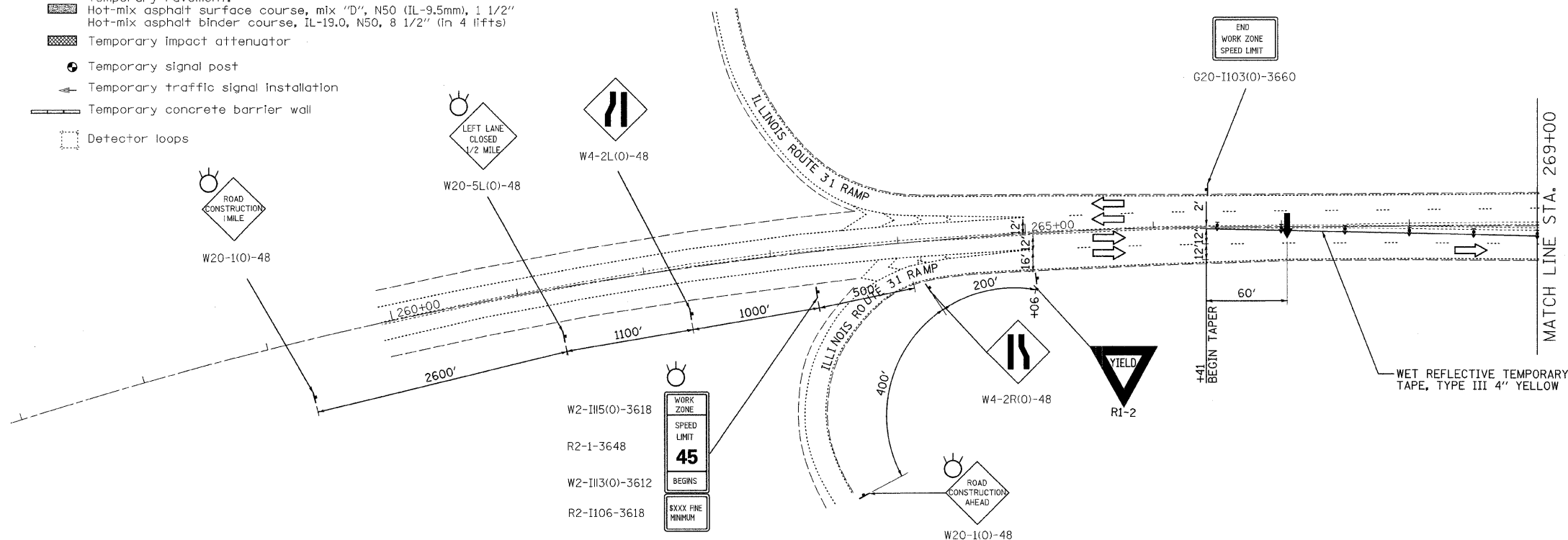


SYMBOLS

- Arrow board
- Work area
- Sign
- Drum with steady burn monodirectional light (50' cts.)
- Direction indicator barricade with steady burn monodirectional light (50' cts.)
- Flexible delineator
- Type III barricade with flashing monodirectional lights
- Non-directional flashing beacon
- Crystal, bidirectional barrier wall / guardrail marker (25' cts.)
- Temporary Pavement:
Hot-mix asphalt surface course, mix "D", N50 (IL-9.5mm), 1 1/2"
Hot-mix asphalt binder course, IL-19.0, N50, 8 1/2" (in 4 lifts)
- Temporary impact attenuator
- Temporary signal post
- Temporary traffic signal installation
- Temporary concrete barrier wall
- Detector loops



FILE NAME = n:\p\33291\33291_2b\design\topoc\shp\33291_2b-11-TP21.dgn

Ciorba Group, Inc.
CONSULTING ENGINEERS
6507 North Cumberland Avenue, Suite 402
Chicago, Illinois 60655
Tel: 773-775-4009 Fax 773-775-4014

USER NAME = vjancaster	DESIGNED - JCC	REVISED -
PLOT SCALE = 51.0058' / IN.	DRAWN - JCC	REVISED -
PLOT DATE = 1/13/2009	CHECKED - MJL	REVISED -
	DATE - 01/30/08	REVISED -

STATE OF ILLINOIS
DEPARTMENT OF TRANSPORTATION

FAP 349 / US ROUTE 30
OVER RIVER STREET
TRAFFIC CONTROL AND PROTECTION - STAGE 2

SCALE 4"=50' SHEET NO.1 OF 2 SHEETS STA. TO STA.

F.A.P. RTE. 349	SECTION 11 HB-I	COUNTY KENDALL	TOTAL SHEETS 26	SHEET NO. 9
CONTRACT NO. 60D83				
FED. ROAD DIST. NO. - ILLINOIS FED. AID PROJECT				