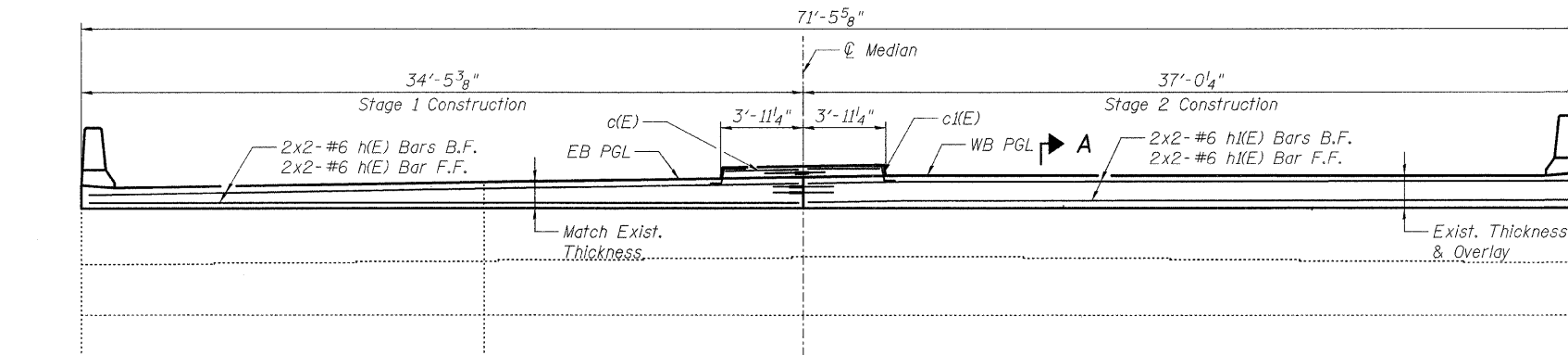
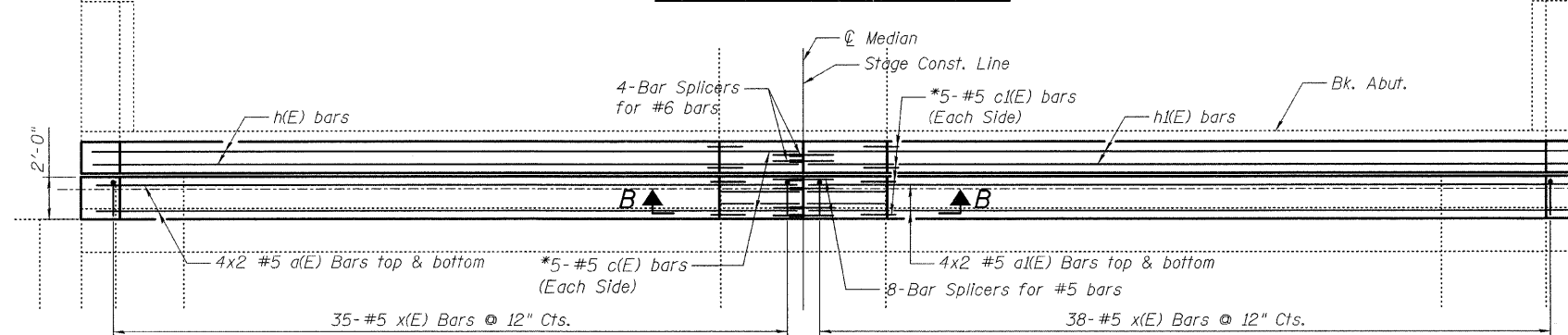


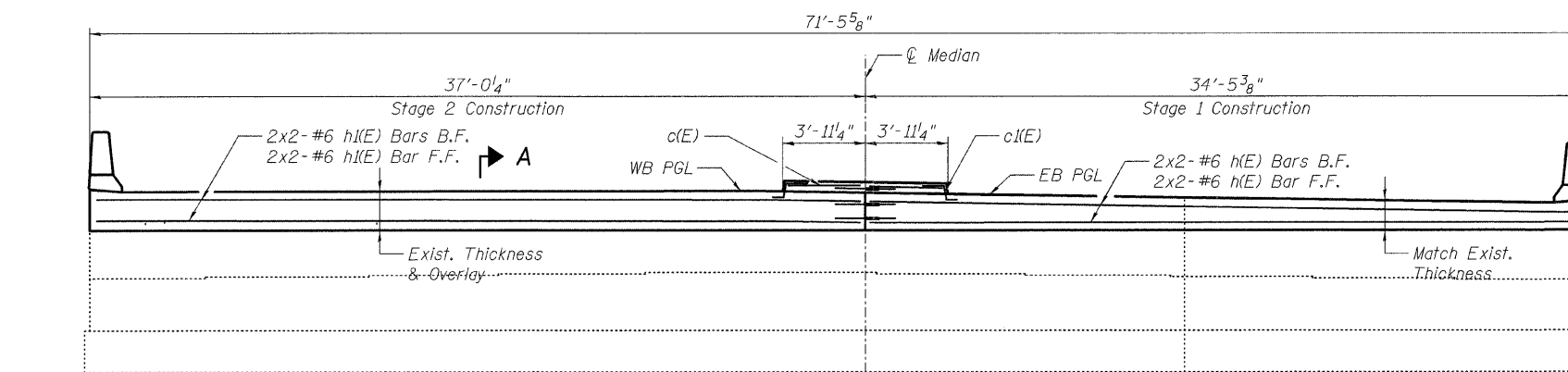
STATE OF ILLINOIS  
DEPARTMENT OF TRANSPORTATION



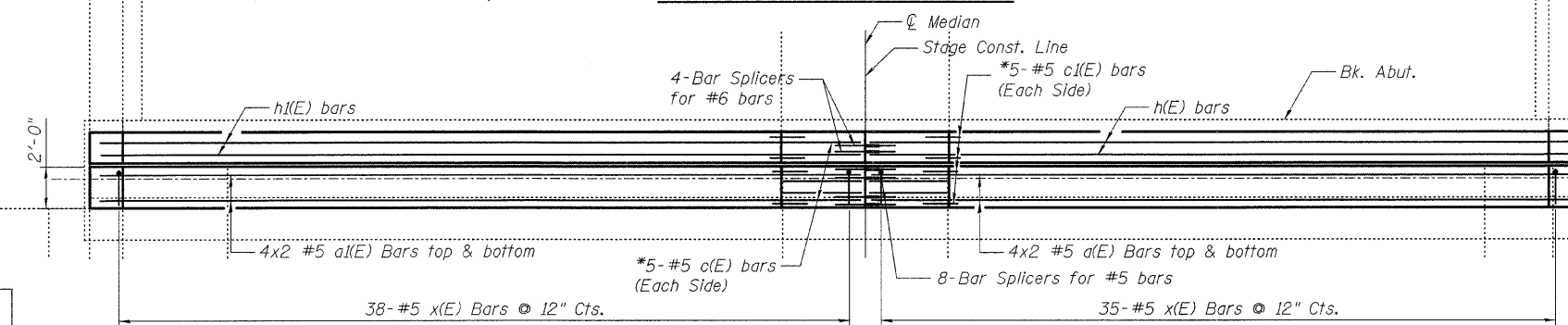
WEST ABUTMENT ELEVATION A-A



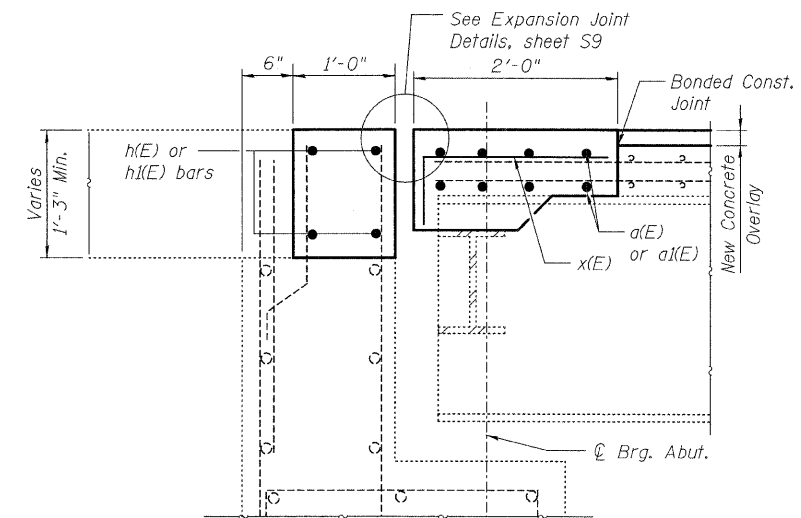
WEST ABUTMENT PLAN



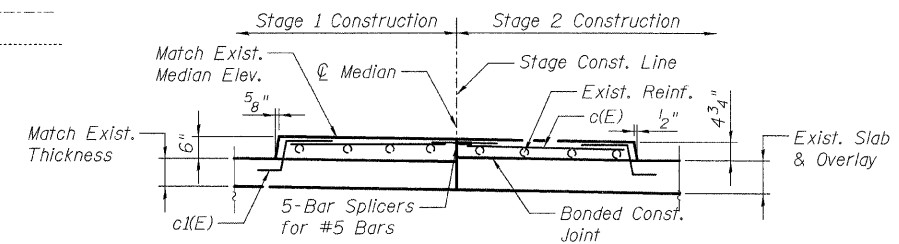
EAST ABUTMENT ELEVATION A-A



EAST ABUTMENT PLAN



SECTION A-A



SECTION B-B

East Abut. similar

\* 3 bars in the deck & 2 bars in abutment

BILL OF MATERIAL

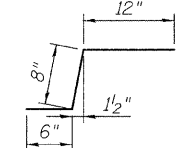
Bar	No.	Size	Length (ft)	Shape	
a(E)	32	# 5	18'-3"	—	
a(E)	32	# 5	19'-6"	—	
c(E)	20	# 5	3'-7"	—	
c(E)	20	# 5	2'-2"	┘	
d(E)	6	# 5	5'-1"	┘	
d(E)	6	# 5	4'-2"	┘	
d2(E)	12	# 5	3'-9"	┘	
h(E)	16	# 6	18'-4"	—	
h(E)	16	# 6	19'-8"	—	
x(E)	146	# 5	2'-5"	┘	
Reinforcement Bars Epoxy Coated				Lb.	2,770
Conc. Superstructure				Cu. Yd.	20.1
Bar Splicers				Each	34

MIN. LAP SPLICES

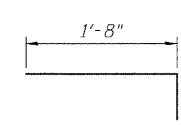
#5 bars - 2'-2"  
#6 bars - 2'-7"

NOTES:

1. Work this sheet with sheets S4 & S6.
2. For view C-C, see sheet S6.



Bar c(E)



Bar x(E)

ABUTMENT DETAILS  
US 30 OVER SOUTH RIVER STREET  
STA. 280+57.0  
S.N. 047-0030

DESIGNED	B. Sauter
CHECKED	E. Mroczek
DRAWN	R. Danley
CHECKED	B. Sauter

**Giorba Group, Inc.**  
CONSULTING ENGINEERS  
5507 North Cumberland Avenue, Suite 402 Chicago, Illinois 60658  
Tel. 773.775.4009 Fax 773.775.4014 Email chicago@giorba.com

SHEET NO. S5 S9 SHEETS	F.A.P. RTE. 349	SECTION 11 HB-I	COUNTY KENDALL	TOTAL SHEETS 26	SHEET NO. 17
	CONTRACT NO. 60D83			FED. ROAD DIST. NO. ILLINOIS FED. AID PROJECT	

rdanley

1/13/2009  
ms:\proj\3329\3329\_28\design\structure\cod\sh\3329\_28\_05 Abutment Detail.sht