

STATE OF ILLINOIS  
DEPARTMENT OF TRANSPORTATION  
DIVISION OF HIGHWAYS

**PROPOSED  
HIGHWAY PLANS**

FAP ROUTE 852/US ROUTE 52  
OVER JACKSON CREEK  
SECTION 18 B-4-R-1  
BRIDGE DECK OVERLAY

PROJECT: *ESP-0852(011)*  
WILL COUNTY  
C-91-118-08

F.A.P. RTE.	SECTION	COUNTY	TOTAL SHEETS	SHEET NO.
852	18 B-4-R-1	WILL	27	1
FED. ROAD DIST. NO.	ILLINOIS	CONTRACT NO.	60D84	

FOR INDEX OF SHEETS SEE SHEET NUMBER 2

THIS IMPROVEMENT IS LOCATED  
IN UNINCORPORATED WILL COUNTY  
IN MANHATTAN TOWNSHIP

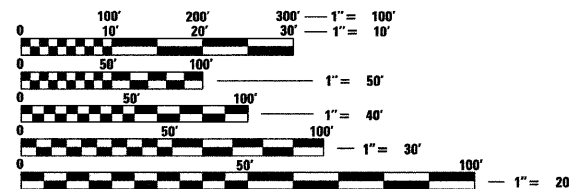
IMPROVEMENT LOCATION  
SN: 099-0129

**TRAFFIC DATA**

2005 ADT - 900  
POSTED SPEED LIMIT - 55 MPH

**US 52 OVER JACKSON CREEK**

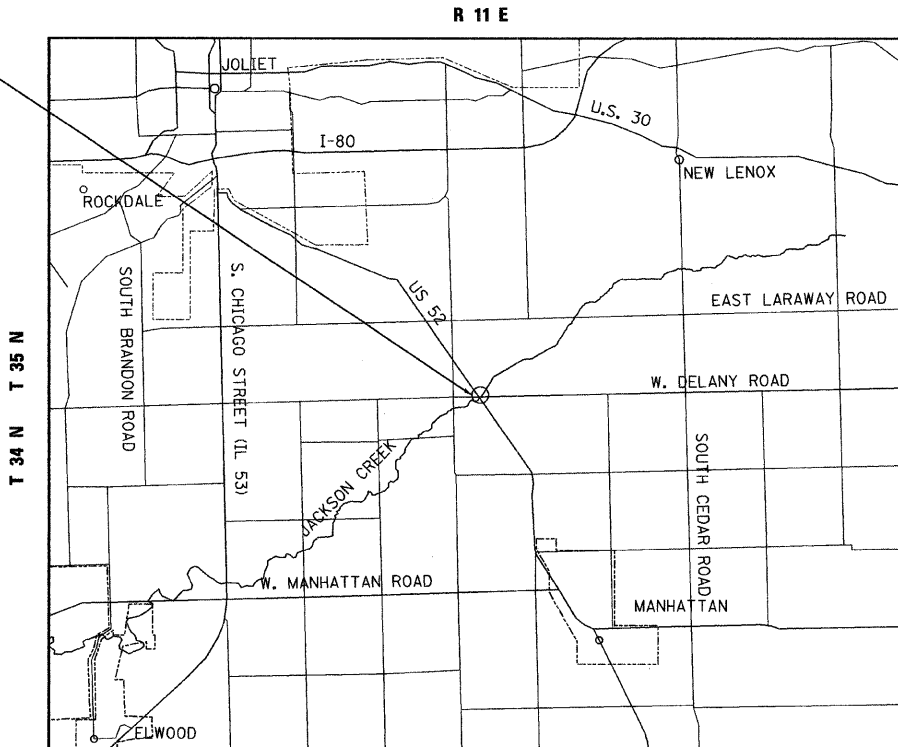
SN: 099-0129 (STA. 524+51)  
2-SPAN PPC DECK BEAM BRIDGE  
ON PIERS AND CLOSED ABUTMENTS



FULL SIZE PLANS HAVE BEEN PREPARED USING STANDARD  
ENGINEERING SCALES. REDUCED SIZED PLANS WILL NOT  
CONFORM TO STANDARD SCALES. IN MAKING MEASUREMENTS  
ON REDUCED PLANS, THE ABOVE SCALES MAY BE USED.

J.U.L.I.E.  
JOINT UTILITY LOCATION INFORMATION FOR EXCAVATION  
1-800-892-0123  
OR 811

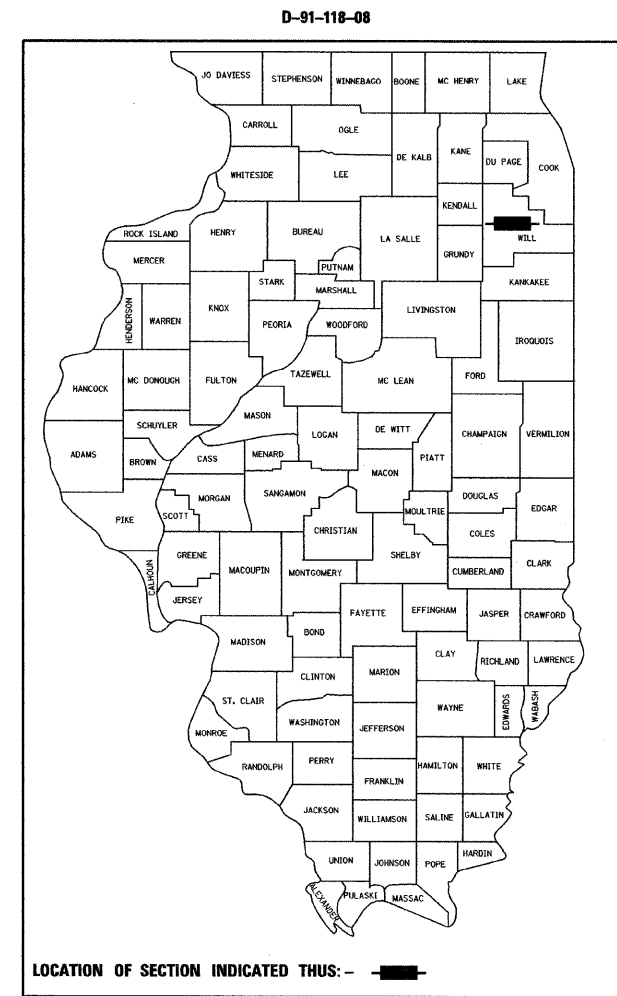
**Ciorba Group, Inc.**  
DESIGN FIRM  
REGISTRATION NUMBER  
184-001016  
CONSULTING ENGINEERS  
SUITE 402, 5507 NORTH CUMBERLAND AVE  
CHICAGO, ILLINOIS 60656 ☎ (773) 775-4009



MANHATTAN TOWNSHIP

LOCATION MAP  
1" = 5000'

GROSS LENGTH AND NET LENGTH OF PROJECT = 340' = 0.06 MI.



DISTRICT 1 DESIGN PLAN PREPARATION ENGINEER: K.ENG (847) 705-4247

MATTHEW J. LEHAN  
062-057159  
LICENSED PROFESSIONAL ENGINEER  
OF ILLINOIS  
DATE: 1/8/2009  
SEAL EXPIRES: 11/30/2009

EWA K. MROCZEK  
081-006067  
STRUCTURAL ENGINEER  
DATE: 1/8/2009  
SEAL EXPIRES: 11/30/2010

STATE OF ILLINOIS  
DEPARTMENT OF TRANSPORTATION  
DIVISION OF HIGHWAYS  
SUBMITTED JANUARY 8, 2009  
Deane M. O'Keefe DEPUTY DIRECTOR OF HIGHWAYS, REGION ENGINEER  
March 13, 2009  
Charles G. Ingersoll ENGINEER OF DESIGN AND ENVIRONMENT  
March 13, 2009  
Christina M. Reed DIRECTOR OF HIGHWAYS, CHIEF ENGINEER

**PRINTED BY THE AUTHORITY  
OF THE STATE OF ILLINOIS**

CONTRACT NO. 60D84