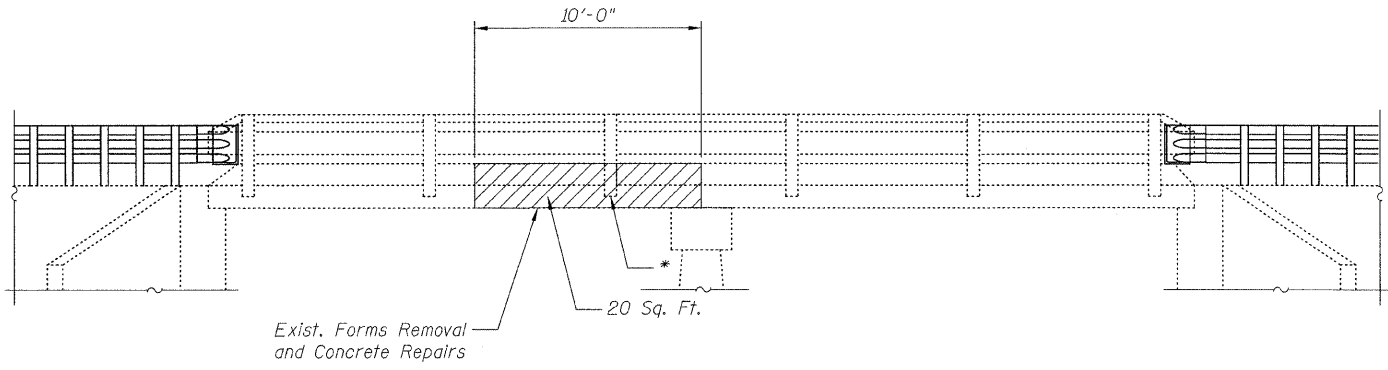
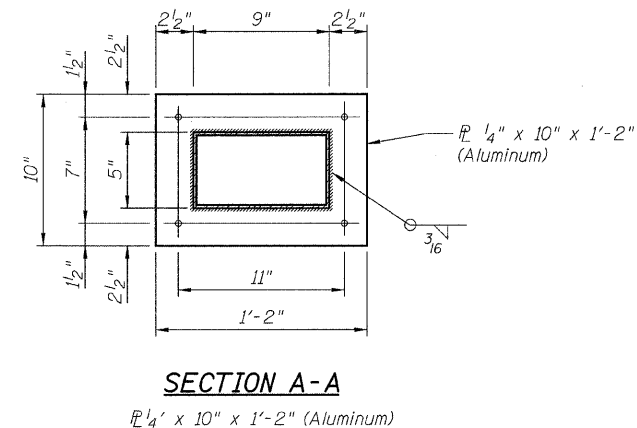
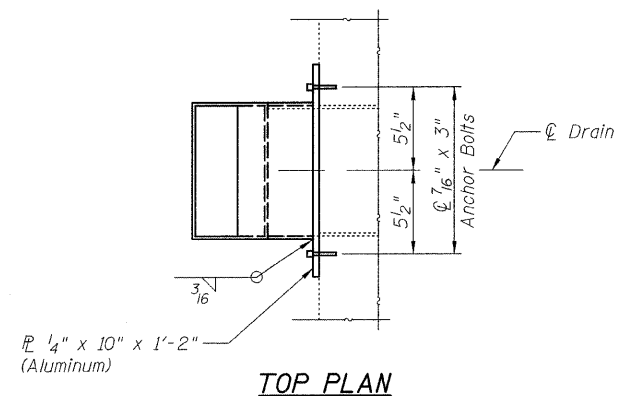
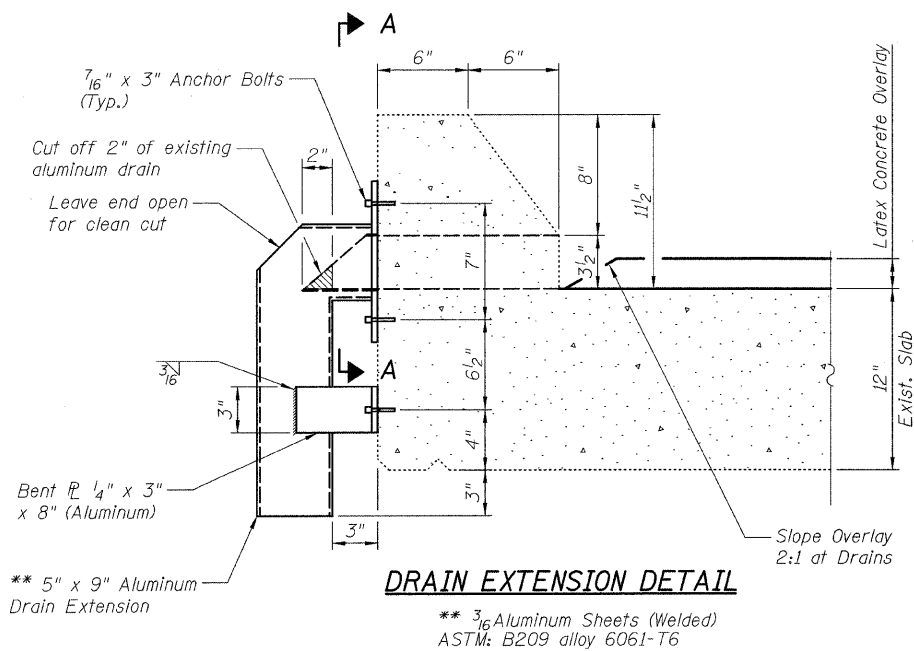


STATE OF ILLINOIS
DEPARTMENT OF TRANSPORTATION



WEST ELEVATION
Looking East

* - The existing rail post shall be removed during the repairs and the anchor devices shall be reused. The existing steel rail tubing shall remain in place during the work. Cost included with Structural Repair of Concrete.

BILL OF MATERIAL

ITEM	UNIT	QUANTITY
Deck Drain Extensions	Each	12
Structural Repair of Concrete (Depth Equal to or less than 5 inches)	Sq. Ft.	20

NOTE:
Repairs shall include but not be limited to the areas shown. The actual areas to be determined by engineer at the time of construction.

LEGEND:
 Structural Concrete Repairs (Depth equal or less than 5 inches)

DESIGNED	E. Mroczek
CHECKED	B. Sauter
DRAWN	R. Danley
CHECKED	E. Mroczek

Giorba Group, Inc.
CONSULTING ENGINEERS
5507 North Cumberland Avenue, Suite 402 Chicago, Illinois 60656
Tel. 773.775.4009 Fax 773.775.4014 Email chicago@giorba.com

SUPERSTRUCTURE REPAIRS II
U.S. 52 OVER N. BR. JACKSON CREEK
STA. 524+51.00
S.N. 099-0129

SHEET NO. S5	F.A.P. RTE.	SECTION	COUNTY	TOTAL SHEETS	SHEET NO.
	852	18 B-4-R-1	WILL	27	21
S6 SHEETS			CONTRACT NO. 60D84		
FED. ROAD DIST. NO.		ILLINOIS	FED. AID PROJECT		

1/13/2009 rdanley ms:\proj\3329\3329_27\design\structural\cad\vt\3329_27_05 Superstructure Details.dwg