

F.A.P. RTE.	SECTION	COUNTY	TOTAL SHEETS	SHEET NO.
370	2008-005 RS	COOK	22	1
FED. ROAD DIST. NO. 1	ILLINOIS	CONTRACT NO. 60E29		

FOR INDEX OF SHEETS, SEE SHEET NO. 2

DESIGN DESIGNATION:
SPEED LIMIT : 35 M.P.H.
2005 ADT = 30,000

PROJECT LOCATED IN THE CITY OF CHICAGO AND THE VILLAGE OF EVERGREEN PARK

STATE OF ILLINOIS
DEPARTMENT OF TRANSPORTATION
DIVISION OF HIGHWAYS
**PROPOSED
HIGHWAY PLANS**

**F.A.P. 370 / WESTERN AVENUE
SECTION: 2008-005 RS
87TH STREET TO 99TH STREET
RESURFACING (3P)
PROJECT: ESP-0370(007)
COOK COUNTY
C-91-350-08**

WORTH AND CALUMET TOWNSHIP
R. 14 E.

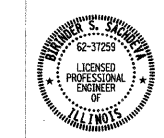
D-91-350-08



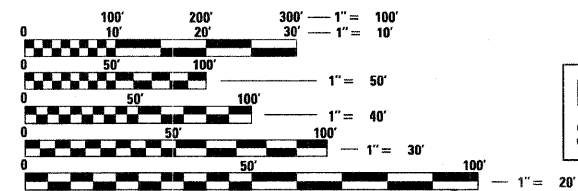
LOCATION OF SECTION INDICATED THUS: - [black rectangle] -

STATE OF ILLINOIS
DEPARTMENT OF TRANSPORTATION
DIVISION OF HIGHWAYS

SUBMITTED JANUARY 8, 2009
Dina M. O'Keefe
DEPUTY DIRECTOR OF HIGHWAYS, REGION ONE ENGINEER
March 13, 2009
Charles G. Ingrassia
ENGINEER OF DESIGN AND ENVIRONMENT
March 13, 2009
Christine M. Reed
DIRECTOR OF HIGHWAYS, CHIEF ENGINEER



Birinder S. Sachdeva January 06, 2009
BIRINDER S. SACHDEVA, P.E. DATE
EXPIRES: 11-30-2009

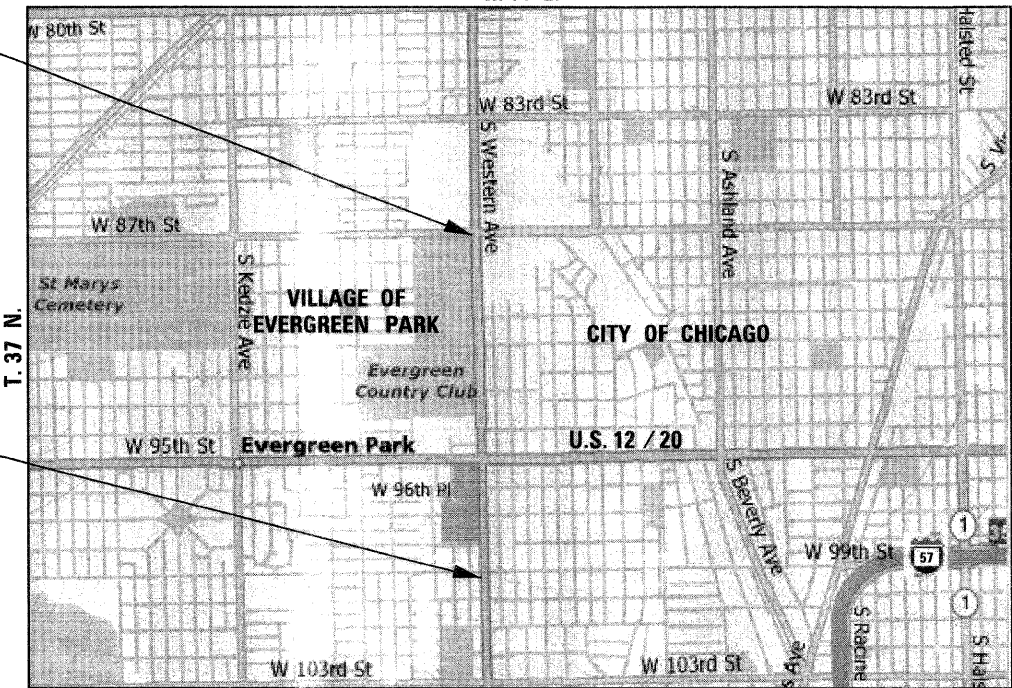


FULL SIZE PLANS HAVE BEEN PREPARED USING STANDARD ENGINEERING SCALES. REDUCED SIZED PLANS WILL NOT CONFORM TO STANDARD SCALES. IN MAKING MEASUREMENTS ON REDUCED PLANS, THE ABOVE SCALES MAY BE USED.

J.U.L.I.E.
JOINT UTILITY LOCATING INFORMATION FOR EXCAVATORS
1-800-892-0123 OR 811
AND
C.A.U.N.
CHICAGO AREA UTILITY NETWORK
1-312-744-7000

**PROJECT ENDS
STA. 94 + 54**

**PROJECT BEGINS
STA. 14 + 43**



GROSS LENGTH OF PROJECT = 8,011.00 FEET = 1.517 MILES
NET LENGTH OF PROJECT = 8,011.00 FEET = 1.517 MILES

DESIGN SECTION ENGINEER :
CR & A
CHRISTIAN-ROGE & ASSOCIATES, INC.
ENGINEERS - PLANNERS - SURVEYORS
211 W WACKER DRIVE CHICAGO, IL 60606
TELEPHONE: 312-372-2023

**PRINTED BY THE AUTHORITY
OF THE STATE OF ILLINOIS**

DISTRICT ONE - DESIGN PROJECT MANAGER: ISAAC KWARTENG (847) 705-4230

CONTRACT NO. 60E29