

F.A.P. RTE.	SECTION	COUNTY	TOTAL SHEETS	SHEET NO.
303	(132, 133 & 134) RS-6	McHENRY	26	1
FED. ROAD DIST. NO.	ILLINOIS	CONTRACT NO. 62495		

STATE OF ILLINOIS  
DEPARTMENT OF TRANSPORTATION  
DIVISION OF HIGHWAYS

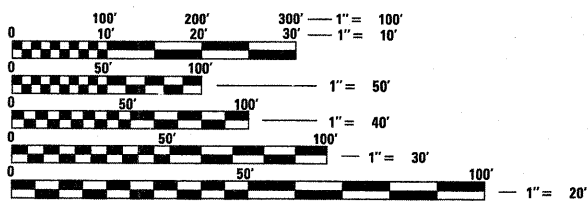
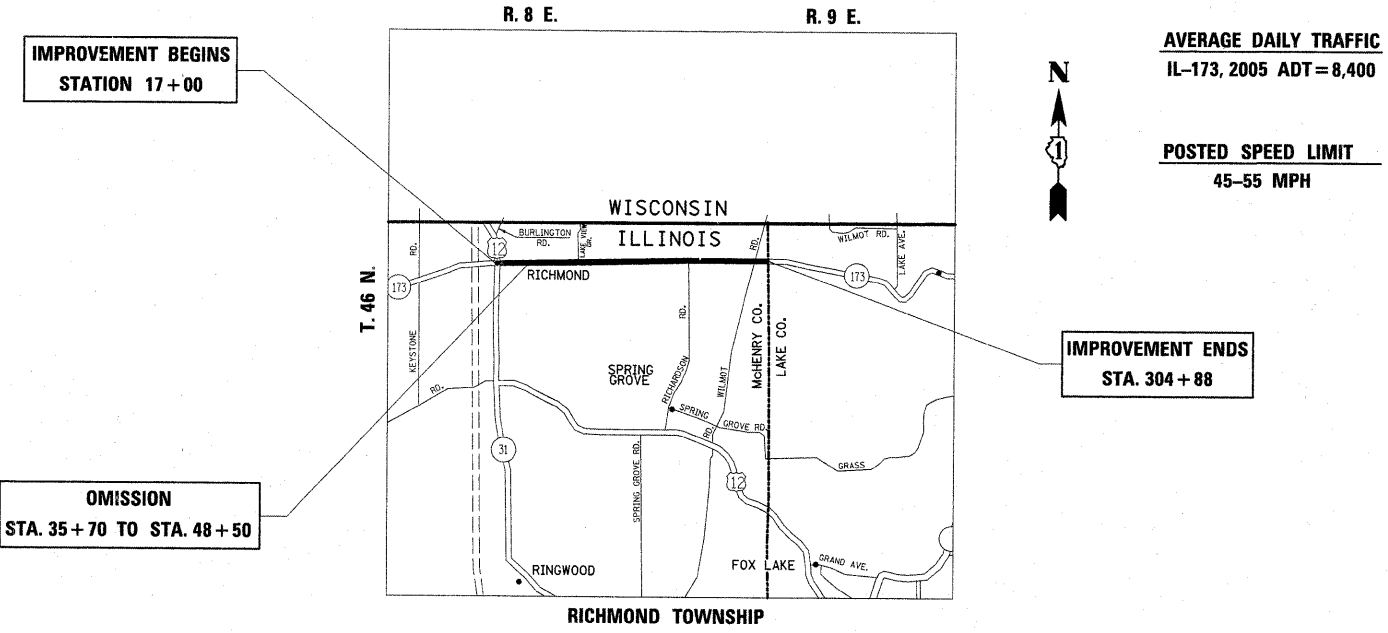
**PROPOSED  
HIGHWAY PLANS**

FAP 303 (IL-173)  
U.S. 12 (MAIN ST.) TO LAKE CO. LINE  
SECTION: (132, 133 & 134) RS-6  
RESURFACING (MAINTENANCE)  
McHENRY COUNTY

C-91-253-02  
PROJECT: ESP-0303 (042)

FOR INDEX OF SHEETS, SEE SHEET NO. 2

THE IMPROVEMENT IS LOCATED IN THE  
VILLAGE OF FOX LAKE & RICHMOND



FULL SIZE PLANS HAVE BEEN PREPARED USING STANDARD ENGINEERING SCALES. REDUCED SIZED PLANS WILL NOT CONFORM TO STANDARD SCALES. IN MAKING MEASUREMENTS ON REDUCED PLANS, THE ABOVE SCALES MAY BE USED.

J.U.L.I.E.  
JOINT UTILITY LOCATION INFORMATION FOR EXCAVATION  
1-800-892-0123  
OR 811

PROJECT ENGINEER KEN ENG (847) 705-4247  
PROJECT MANAGER

CONTRACT NO. 62495

GROSS LENGTH = 28,788 FEET (5.452 MILES)  
NET LENGTH = 27,508 FEET (5.210 MILES)

STATE OF ILLINOIS  
DEPARTMENT OF TRANSPORTATION  
DIVISION OF HIGHWAYS

SUBMITTED JANUARY 6, 2009  
Diana M. O'Keefe  
DEPUTY DIRECTOR OF HIGHWAYS, REGION ENGINEER

March 13, 2009  
Charles G. Ingersoll  
ENGINEER OF DESIGN AND ENVIRONMENT

March 13, 2009  
Christine M. Reed  
DIRECTOR OF HIGHWAYS, CHIEF ENGINEER

**PRINTED BY THE AUTHORITY  
OF THE STATE OF ILLINOIS**

DISTRICT 1 DESIGN PLAN PREPARATION ENGINEER: KEN ENG (847) 705-4247