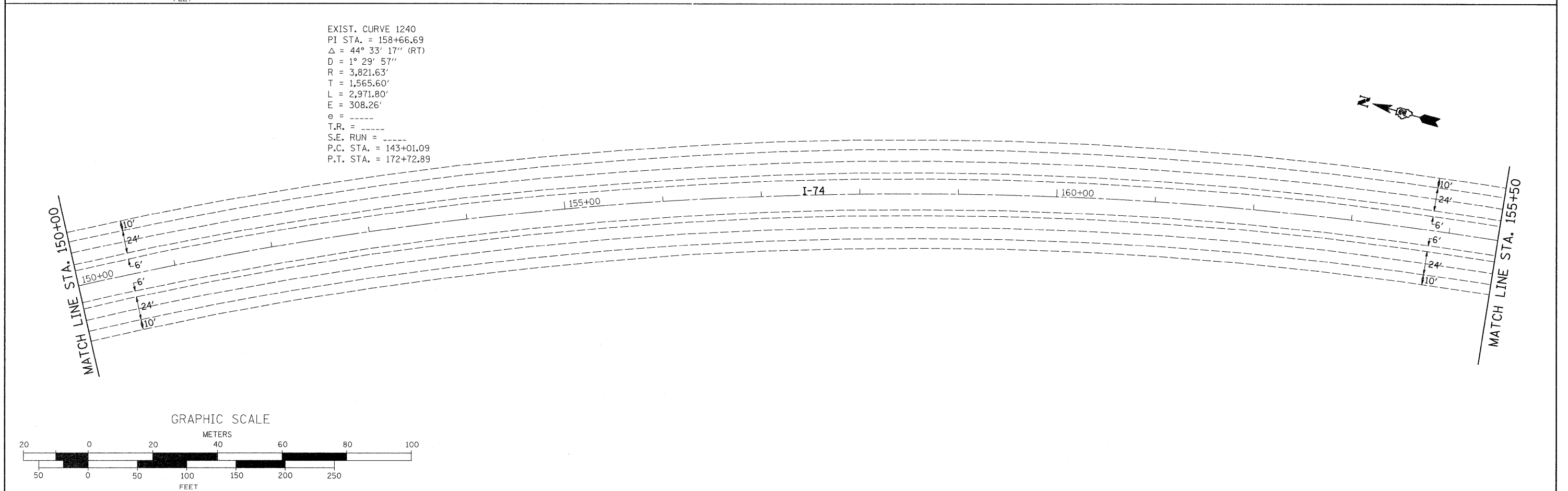


EXIST. CURVE 1240
 PI STA. = 158+66.69
 $\Delta = 44^\circ 33' 17''$ (RT)
 $D = 1^\circ 29' 57''$
 $R = 3,821.63'$
 $T = 1,565.60'$
 $L = 2,971.80'$
 $E = 308.26'$
 $e = \text{-----}$
 $T.R. = \text{-----}$
 $S.E. \text{ RUN} = \text{-----}$
 P.C. STA. = 143+01.09
 P.T. STA. = 172+72.89



FILE NAME =	USER NAME = duncanfa	DESIGNED -	REVISED -	STATE OF ILLINOIS DEPARTMENT OF TRANSPORTATION	I-74	F.A.I. RTE.	SECTION	COUNTY	TOTAL SHEETS	SHEET NO.	
ct:\pwwork\pwwd01\duncanfa\dms33952\0805pln.dgn	PLOT SCALE = 50.0000' / IN.	DRAWN -	REVISED -			74	81(1-2,1,2-2)RS-I&M	ROCK ISLAND	246	48	
	PLOT DATE = Fri Feb 06 11:18:07 2009	CHECKED -	REVISED -			CONTRACT NO. 64A97					
		DATE -	REVISED -			FED. ROAD DIST. NO.	ILLINOIS	FED. AID PROJECT			
					SCALE:	SHEET NO.	OF	SHEETS	STA.	TO STA.	