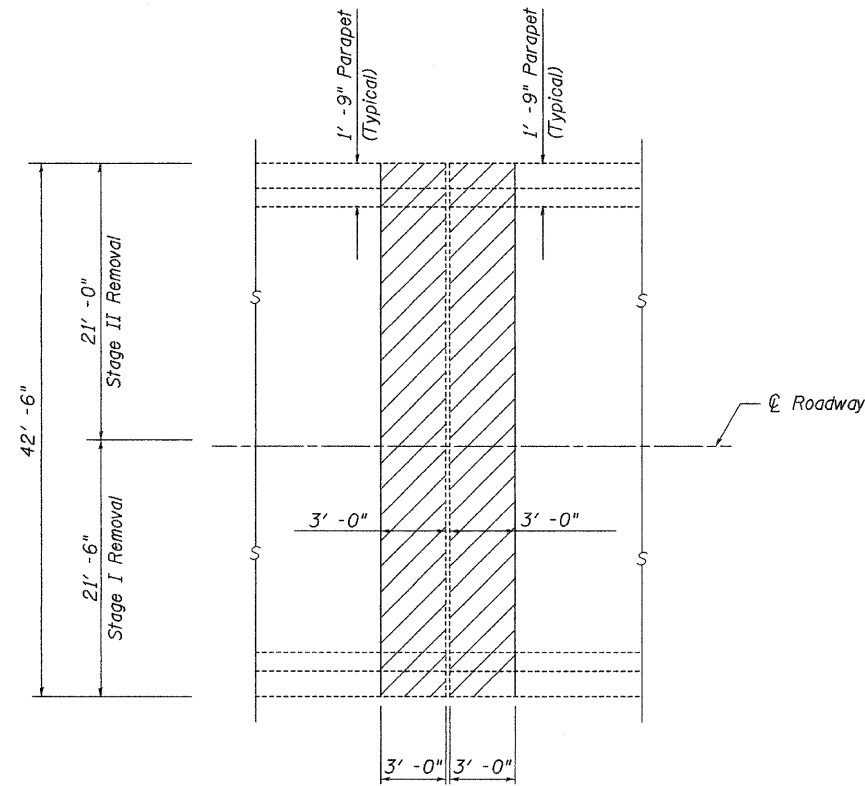
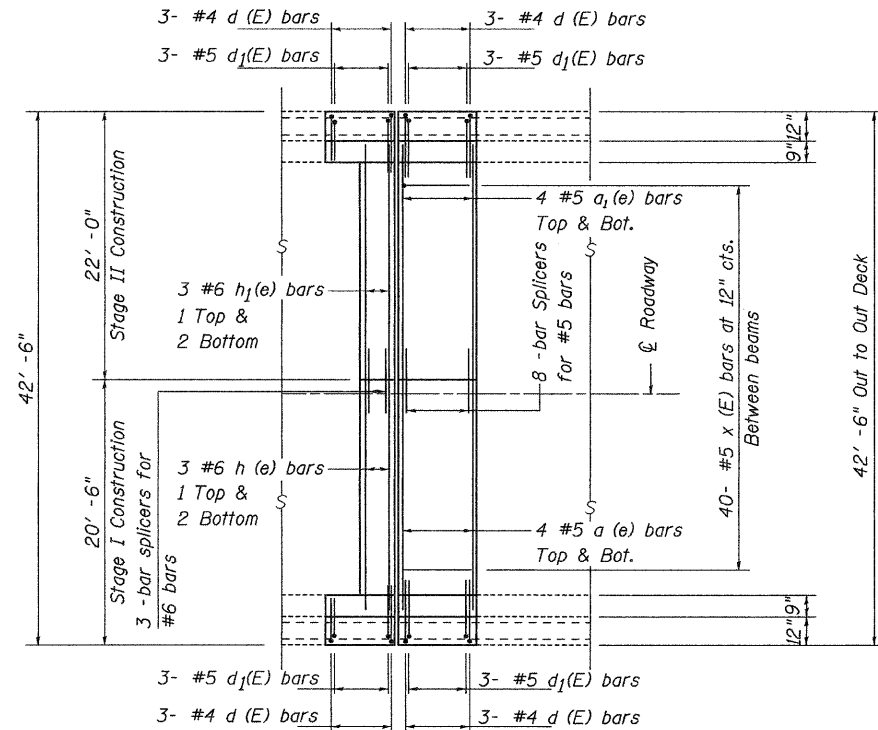


EXISTING PARTIAL PLAN
(North Abutment)

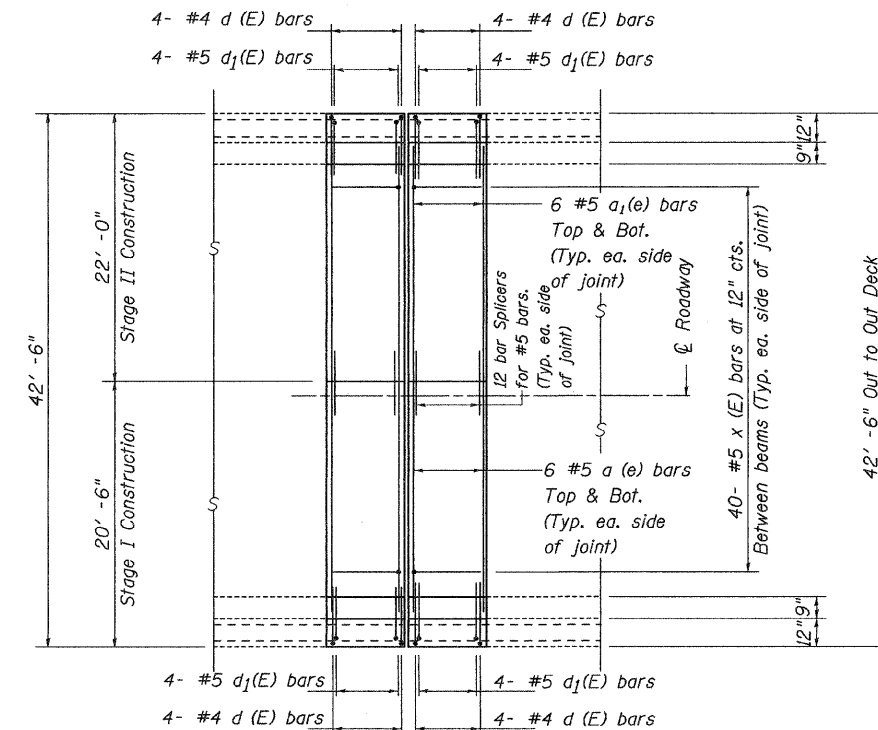


EXISTING PARTIAL PLAN
(North Link Connection)

See sheet 9 of 18
for bar details.



PROPOSED PARTIAL PLAN
(North Abutment)



PROPOSED PARTIAL PLAN
(North Link Connection)

JOINT DETAILS
I-74 OVER 19th STREET
FAI 74 (I-74)
SECTION 81-(1-2,1,2-2)RS-1 & M
ROCK ISLAND COUNTY
STRUCTURE NUMBER 081-0099 (SB)

Sheet 6 of 18

FILE NAME =	USER NAME = #USER#	DESIGNED -	REVISED -
#FILEL#		DRAWN -	REVISED -
		CHECKED -	REVISED -
		DATE -	REVISED -

STATE OF ILLINOIS
DEPARTMENT OF TRANSPORTATION

JOINT DETAILS

SCALE: _____ SHEET NO. ___ OF ___ SHEETS STA. _____ TO STA. _____

F.A.I. RTE.	SECTION	COUNTY	TOTAL SHEETS	SHEET NO.
74	81-(1-2,1,2-2)RS-1 & M	ROCK ISLAND	246	135
FED. ROAD DIST. NO. - ILLINOIS FED. AID PROJECT			CONTRACT NO. 64A97	