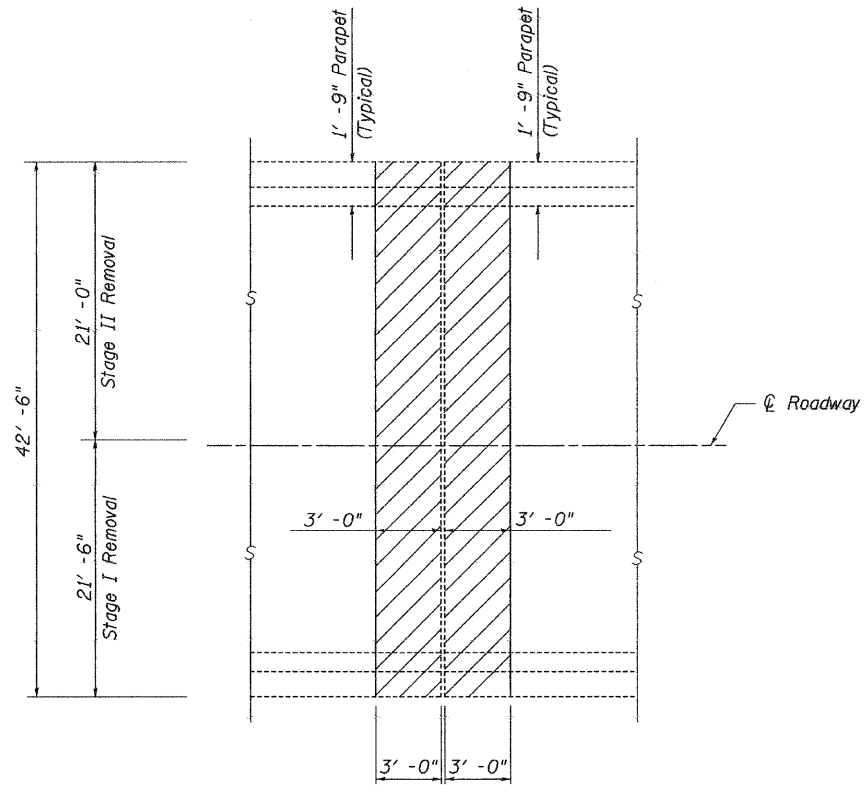
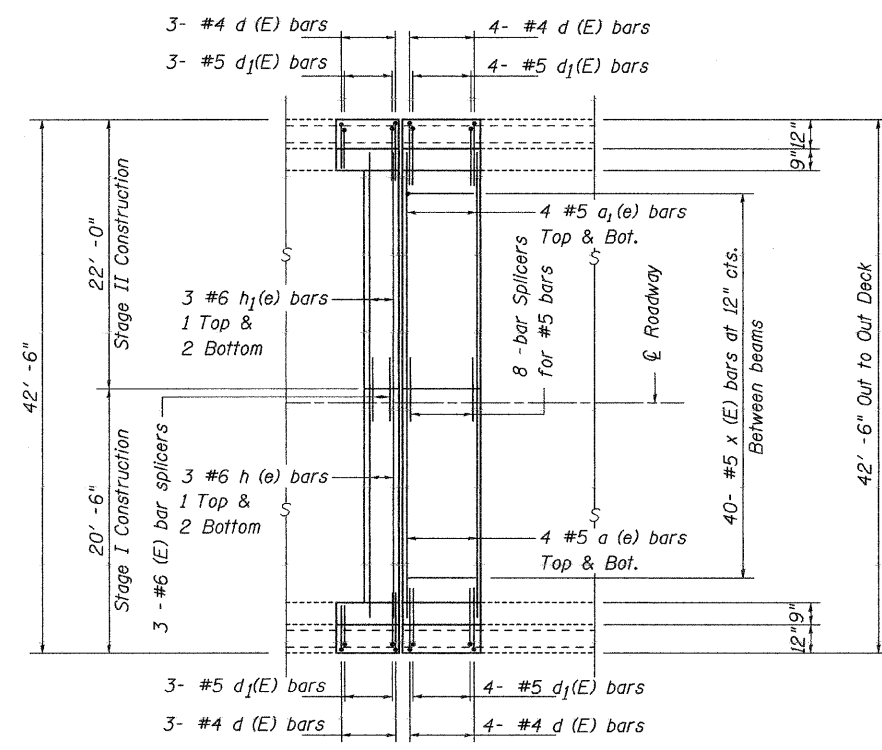


EXISTING PARTIAL PLAN
(North Abutment)

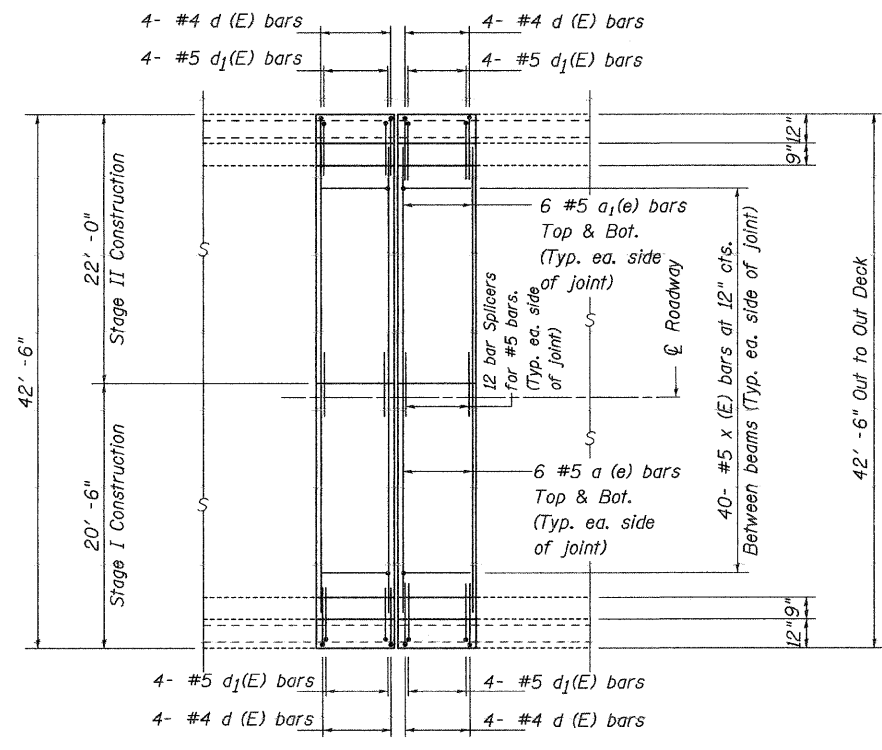


EXISTING PARTIAL PLAN
(North Link Connection)

See sheet 16 of 18 for bar details.



PROPOSED PARTIAL PLAN
(North Abutment)



PROPOSED PARTIAL PLAN
(North Link Connection)

JOINT DETAILS
 I-74 OVER 19th STREET
 FAI 74 (I-74)
 SECTION 81-(1-2,1,2-2)RS-1 & M
 ROCK ISLAND COUNTY
 STRUCTURE NUMBER 081-0100 (NB)

FILE NAME =	USER NAME = #USER#	DESIGNED -	REVISED -	STATE OF ILLINOIS DEPARTMENT OF TRANSPORTATION	JOINT DETAILS	F.A.I. RTE.	SECTION	COUNTY	TOTAL SHEETS	SHEET NO.
#FILE#		DRAWN -	REVISED -			74	81-(1-2,1,2-2)RS-1 & M	ROCK ISLAND	146	142
PLOT SCALE = #SCALE#		CHECKED -	REVISED -			CONTRACT NO. 64A97				
PLOT DATE = #DATE#		DATE -	REVISED -			FED. ROAD DIST. NO. - ILLINOIS FED. AID PROJECT				
						SCALE: _____	SHEET NO. ____ OF ____ SHEETS	STA. _____ TO STA. _____		