

F.A.P. RTE.	SECTION	COUNTY	TOTAL SHEETS	SHEET NO.
587	(138 & 139)RS-4	BUREAU	10	1
		ILLINOIS	CONTRACT NO. 66918	

**STATE OF ILLINOIS**  
**DEPARTMENT OF TRANSPORTATION**  
**DIVISION OF HIGHWAYS**

**PROPOSED**  
**HIGHWAY PLANS**

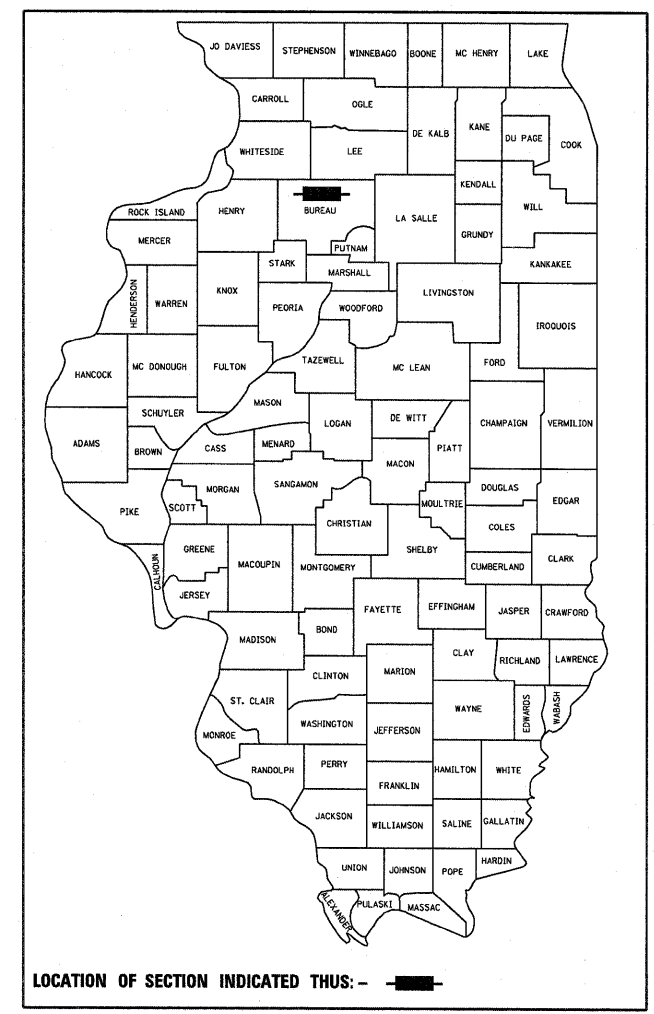
**FAP ROUTE 587 (IL 92)**  
**SECTION (138 & 139)RS-4**  
**PROJECT ESP-0587(024)**

**BUREAU COUNTY**

C - 93 - 053 - 09

**3P RESURFACING ON IL 92 FROM ECL OF WALNUT**  
**TO IL 26 IN OHIO**

D-93-030-09

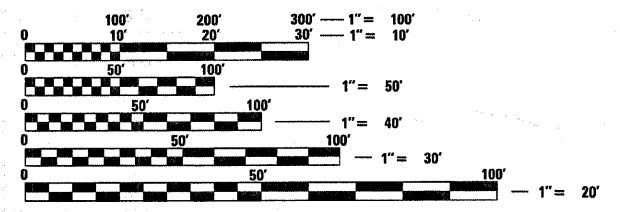


**INDEX OF SHEETS**

1	COVER SHEET
2	GENERAL NOTES AND LOCATION MAP
3	SUMMARY OF QUANTITIES
4	TYPICAL SECTIONS
5-6	SCHEDULES
7	TIE POINTS
8-10	DETAILS

**STANDARDS**

000001-05	STANDARD SYMBOLS, ABBREVIATIONS AND PATTERNS
001006	DECIMAL OF AN INCH AND OF A FOOT
406201-01	MAILBOX TURNOUT
482011-03	HMA SHOULDER STRIPS/SHOULDERS WITH RS OR WIDENING & RS PROJECTS
630301-05	SHOULDER WIDENING FOR TYPE 1 (SPECIAL) GUARDRAIL TERMINALS
635006-03	REFLECTOR AND TERMINAL MARKER PLACEMENT
667101-01	PERMANENT SURVEY MARKERS
701001-02	OFF-ROAD OPERATIONS 2L, 2W, MORE THAN 15' (4.5 m) AWAY
701006-03	OFF-ROAD OPERATIONS 2L, 2W, 15' (4.5 m) TO 24" (600 mm) FROM PAVEMENT EDGE
701011-02	OFF-ROAD MOVING OPERATIONS 2L, 2W, DAY ONLY
701201-03	LANE CLOSURE, 2L, 2W, DAY ONLY, FOR SPEEDS P 45 MPH
701301-03	LANE CLOSURE, 2L, 2W, SHORT TIME OPERATIONS
701306-02	LANE CLOSURE, 2L, 2W, SLOW MOVING OPERATIONS DAY ONLY, FOR SPEEDS P 45 MPH
701311-03	LANE CLOSURE, 2L, 2W, MOVING OPERATIONS - DAY ONLY
701326-03	LANE CLOSURE, 2L, 2W, PAVEMENT WIDENING, FOR SPEEDS P 45 MPH
701901-01	TRAFFIC CONTROL DEVICES
780001-02	TYPICAL PAVEMENT MARKINGS
781001-03	TYPICAL APPLICATIONS RAISED REFLECTIVE PAVEMENT MARKERS

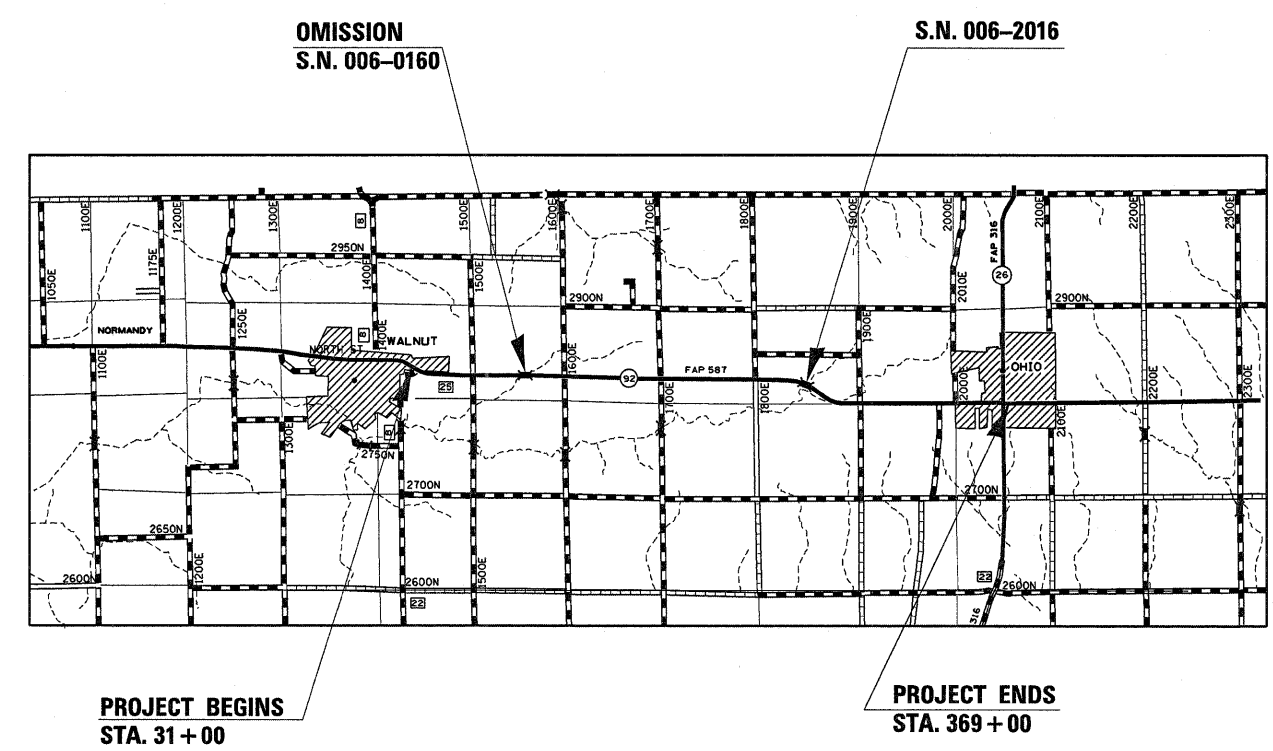


FULL SIZE PLANS HAVE BEEN PREPARED USING STANDARD ENGINEERING SCALES. REDUCED SIZED PLANS WILL NOT CONFORM TO STANDARD SCALES. IN MAKING MEASUREMENTS ON REDUCED PLANS, THE ABOVE SCALES MAY BE USED.

**J.U.L.I.E.**  
**JOINT UTILITY LOCATION INFORMATION FOR EXCAVATION**  
**1-800-892-0123**  
**OR 811**

**PROJECT ENGINEER: JOE KANNEL**  
**PROJECT MANAGER: NATE SELL**

**CONTRACT NO. 66918**



GROSS LENGTH = 33,151 FT. = 6.28 MILE  
NET LENGTH = 33,012 FT. = 6.25 MILE

**FUNCTION CLASSIFICATION**  
**RURAL MINOR ARTERIAL**  
**2009 ADT = 1850**  
**P.V. = 86% S.U. = 6% M.U. = 8%**

STATE OF ILLINOIS  
DEPARTMENT OF TRANSPORTATION  
DIVISION OF HIGHWAYS

SUBMITTED FEBRUARY 3<sup>RD</sup> 20 09

George Dugan  
DEPUTY DIRECTOR OF HIGHWAYS, REGION ENGINEER

March 13, 20 09  
Charles J. Senger III  
ENGINEER OF DESIGN AND ENVIRONMENT

March 13, 20 09  
Christine M. Reed  
DIRECTOR OF HIGHWAYS, CHIEF ENGINEER

**PRINTED BY THE AUTHORITY**  
**OF THE STATE OF ILLINOIS**