

F.A.P. RTE.	SECTION	COUNTY	TOTAL SHEETS	SHEET NO.
587	(138 & 139)RS-4	BUREAU	10	1
		ILLINOIS	CONTRACT NO. 66918	

**STATE OF ILLINOIS**  
**DEPARTMENT OF TRANSPORTATION**  
**DIVISION OF HIGHWAYS**

**PROPOSED**  
**HIGHWAY PLANS**

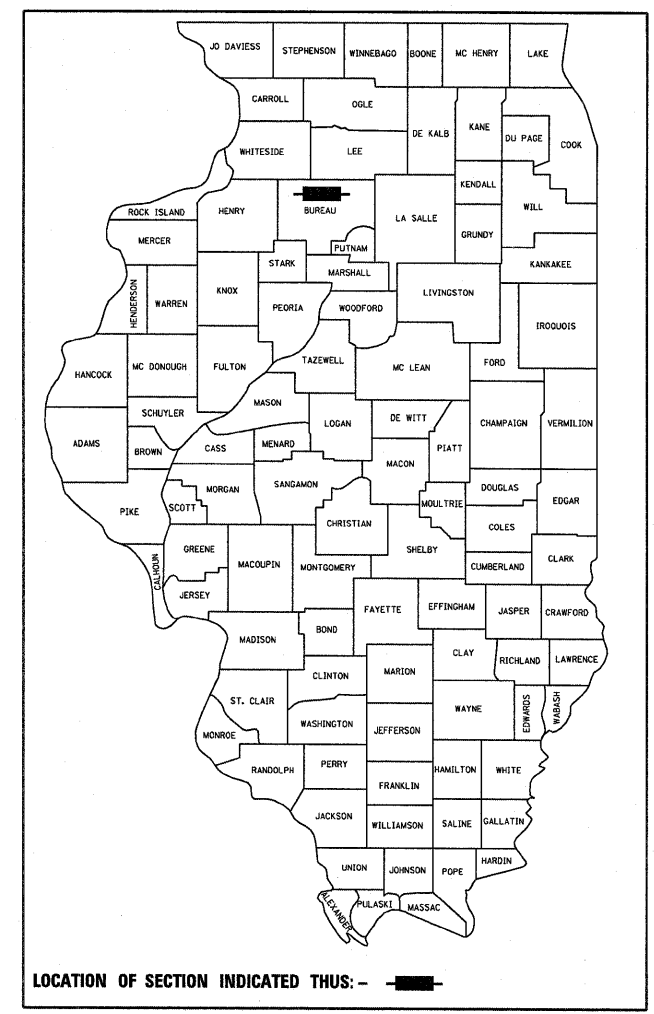
**FAP ROUTE 587 (IL 92)**  
**SECTION (138 & 139)RS-4**  
**PROJECT ESP-0587(024)**

**BUREAU COUNTY**

C - 93 - 053 - 09

**3P RESURFACING ON IL 92 FROM ECL OF WALNUT**  
**TO IL 26 IN OHIO**

D-93-030-09

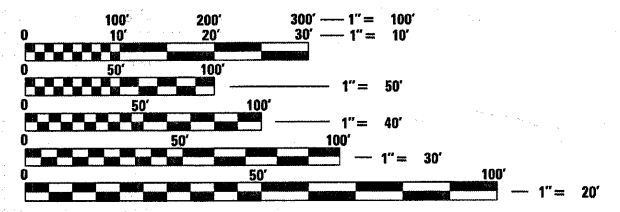


**INDEX OF SHEETS**

1	COVER SHEET
2	GENERAL NOTES AND LOCATION MAP
3	SUMMARY OF QUANTITIES
4	TYPICAL SECTIONS
5-6	SCHEDULES
7	TIE POINTS
8-10	DETAILS

**STANDARDS**

000001-05	STANDARD SYMBOLS, ABBREVIATIONS AND PATTERNS
001006	DECIMAL OF AN INCH AND OF A FOOT
406201-01	MAILBOX TURNOUT
482011-03	HMA SHOULDER STRIPS/SHOULDERS WITH RS OR WIDENING & RS PROJECTS
630301-05	SHOULDER WIDENING FOR TYPE 1 (SPECIAL) GUARDRAIL TERMINALS
635006-03	REFLECTOR AND TERMINAL MARKER PLACEMENT
667101-01	PERMANENT SURVEY MARKERS
701001-02	OFF-ROAD OPERATIONS 2L, 2W, MORE THAN 15' (4.5 m) AWAY
701006-03	OFF-ROAD OPERATIONS 2L, 2W, 15' (4.5 m) TO 24" (600 mm) FROM PAVEMENT EDGE
701011-02	OFF-ROAD MOVING OPERATIONS 2L, 2W, DAY ONLY
701201-03	LANE CLOSURE, 2L, 2W, DAY ONLY, FOR SPEEDS P 45 MPH
701301-03	LANE CLOSURE, 2L, 2W, SHORT TIME OPERATIONS
701306-02	LANE CLOSURE, 2L, 2W, SLOW MOVING OPERATIONS DAY ONLY, FOR SPEEDS P 45 MPH
701311-03	LANE CLOSURE, 2L, 2W, MOVING OPERATIONS - DAY ONLY
701326-03	LANE CLOSURE, 2L, 2W, PAVEMENT WIDENING, FOR SPEEDS P 45 MPH
701901-01	TRAFFIC CONTROL DEVICES
780001-02	TYPICAL PAVEMENT MARKINGS
781001-03	TYPICAL APPLICATIONS RAISED REFLECTIVE PAVEMENT MARKERS

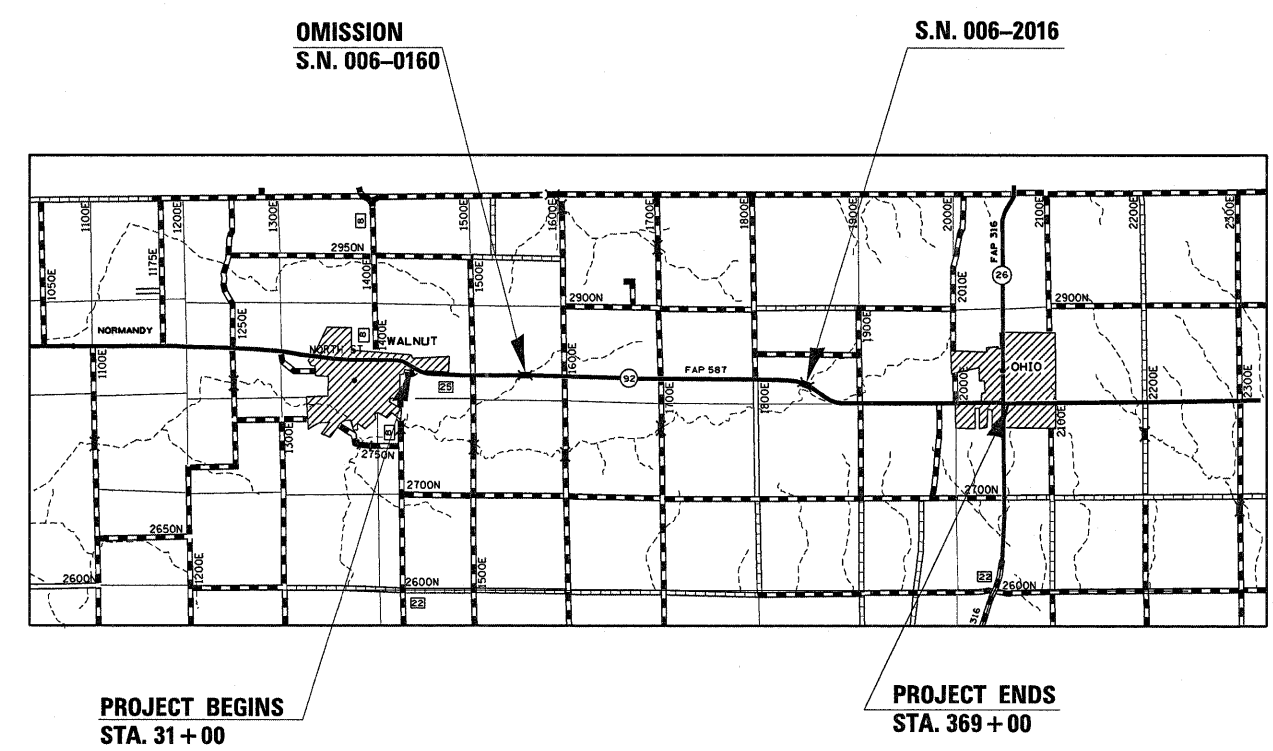


FULL SIZE PLANS HAVE BEEN PREPARED USING STANDARD ENGINEERING SCALES. REDUCED SIZED PLANS WILL NOT CONFORM TO STANDARD SCALES. IN MAKING MEASUREMENTS ON REDUCED PLANS, THE ABOVE SCALES MAY BE USED.

**J.U.L.I.E.**  
**JOINT UTILITY LOCATION INFORMATION FOR EXCAVATION**  
**1-800-892-0123**  
**OR 811**

**PROJECT ENGINEER: JOE KANNEL**  
**PROJECT MANAGER: NATE SELL**

**CONTRACT NO. 66918**



GROSS LENGTH = 33,151 FT. = 6.28 MILE  
NET LENGTH = 33,012 FT. = 6.25 MILE

**FUNCTION CLASSIFICATION**  
**RURAL MINOR ARTERIAL**  
**2009 ADT = 1850**  
**P.V. = 86% S.U. = 6% M.U. = 8%**

STATE OF ILLINOIS  
DEPARTMENT OF TRANSPORTATION  
DIVISION OF HIGHWAYS

SUBMITTED FEBRUARY 3<sup>RD</sup> 20 09

George Dugan  
DEPUTY DIRECTOR OF HIGHWAYS, REGION ENGINEER

March 13, 20 09  
Charles J. Senger III  
ENGINEER OF DESIGN AND ENVIRONMENT

March 13, 20 09  
Christine M. Reed  
DIRECTOR OF HIGHWAYS, CHIEF ENGINEER

**PRINTED BY THE AUTHORITY**  
**OF THE STATE OF ILLINOIS**

**GENERAL NOTES**  
(Revised January 23, 2009)

THE THICKNESS OF HMA SHOWN ON THE PLANS IS THE NOMINAL THICKNESS. DEVIATIONS FROM THE NOMINAL THICKNESS WILL BE PERMITTED WHEN SUCH DEVIATIONS OCCUR DUE TO IRREGULARITIES IN THE EXISTING SURFACE OR BASE ON WHICH THE HMA IS PLACED.

THE HMA SURFACE OF ALL MAILBOX TURNOUTS, PRIVATE ENTRANCES, COMMERCIAL ENTRANCES, AND SIDE ROADS SHALL BE MADE NEATLY, IN A WORKMANLIKE MANNER, AND SHALL ACCURATELY CONFORM TO THE SHAPES AND DIMENSIONS SHOWN ON THE PLAN DETAILS. IF REQUIRED BY THE ENGINEER, THE CONTRACTOR SHALL BE REQUIRED TO SAW CUT THE HMA SURFACE TO CONFORM TO THE SHAPES AND DIMENSIONS SHOWN ON THE PLAN DETAILS. THIS WORK SHALL BE INCLUDED IN THE COST OF THE HMA SURFACE.

THE ENGINEER WILL BE THE SOLE JUDGE CONCERNING CURING TIME FOR THE VARIOUS HMA LIFTS.

SEEDING SHALL NOT BE PERMITTED AT ANY TIME WHEN THE GROUND IS FROZEN, WET, OR IN AN UNTILLABLE CONDITION. LOCATIONS TO BE SEEDDED WILL BE DETERMINED BY THE ENGINEER.

THE FINISHED EARTHWORK SHALL HAVE A VEGETATION SUSTAINING SOIL COVERING THE TOP FOUR INCHES IN AREAS TO BE SEEDDED OR SODDED. THE VEGETATION SUSTAINING SOIL REQUIRED WILL NOT BE PAID FOR SEPARATELY BUT SHALL BE INCLUDED IN THE COST OF FURNISHED EXCAVATION.

ON EXISTING PAVEMENT WHICH MAY BE SUPERELEVATED, THE NEW HMA PAVEMENT SHALL BE BUILT WITH THE SAME SUPERELEVATION UNLESS NEW SUPERELEVATION RATES ARE GIVEN ON THE PLANS.

ANY REFERENCE TO A STANDARD IN THESE PLANS SHALL BE INTERPRETED TO MEAN THE EDITION AS INDICATED BY THE SUBNUMBER SHOWN IN THE LIST OF STANDARDS OR THE COPY INCLUDED IN THESE PLANS.

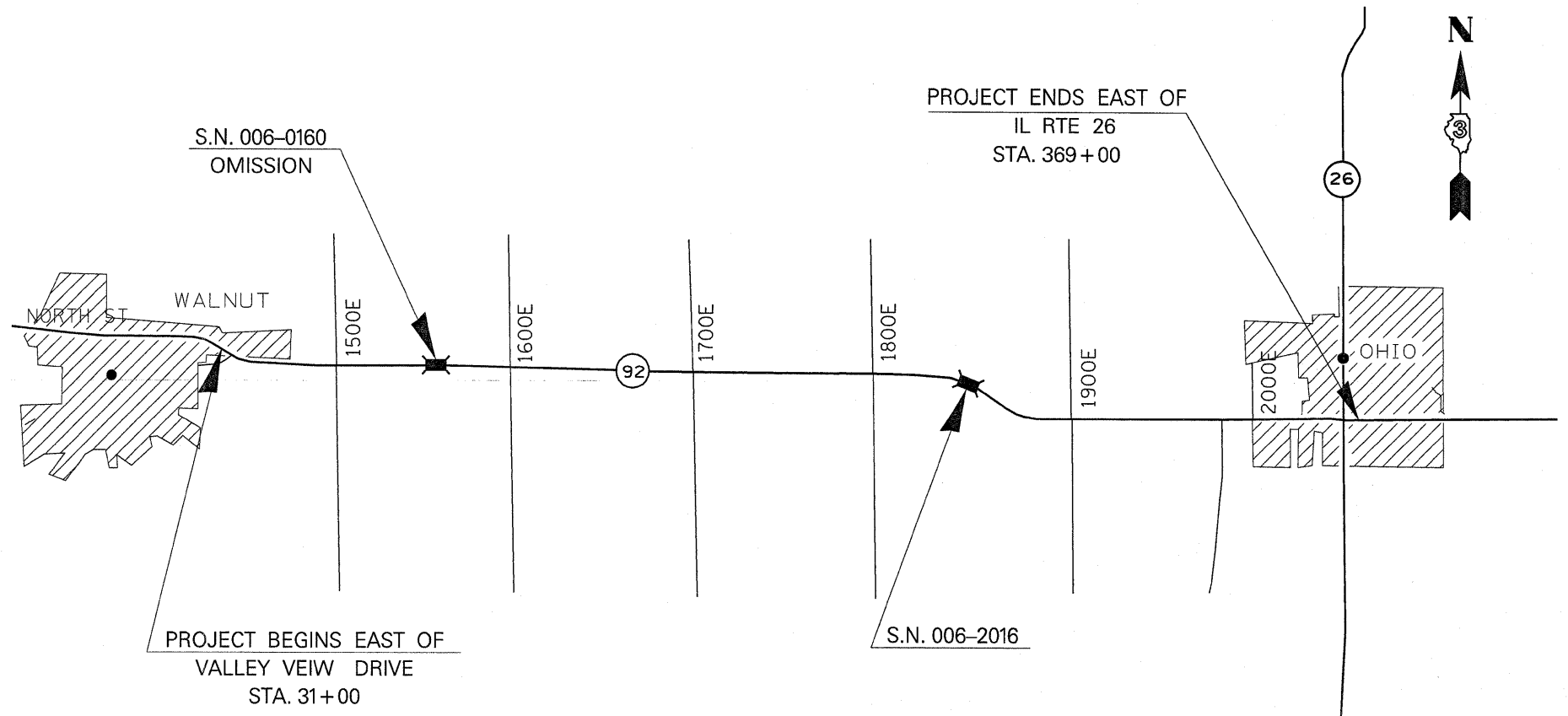
THE FOLLOWING RATES OF APPLICATION HAVE BEEN USED IN CALCULATING PLAN QUANTITIES:

GRANULAR MATERIALS	2.05	TONS / CU YD
BIT MATERIALS (PRIME COAT) ON AGGREGATE BASES	0.375	GAL / SQ YD
BITUMINOUS MATERIALS (PRIME COAT)	0.08	GAL / SQ YD
FOR ADDITIONAL HMA LIFTS "FOG COAT"	0.05	GAL / SQ YD
AGGREGATE PRIME COAT	0.002	TONS / SQ YD
HMA RESURFACING	112	LBS / SQ YD / IN
SHORT TERM PAVEMENT MARKING	10	FT / 100 FT OF APPLICATION
MIX FOR CRACKS, JTS & FLGWYS	0.0003	TONS / SQ YD
LEVEL BINDER (HAND METHOD)	0.0005	TONS / SQ YD
SUPPLEMENTAL WATERING	3	GAL / SQ YD / APPLICATION
CALCIUM CHLORIDE	2	LB / SQ YD / APPLICATION
TEMPORARY DITCH CHECKS	5	TONS AGGREGATE

MEMBERS OF JULIE KNOWN TO BE WITHIN THE LIMITS OF THE IMPROVEMENT ARE:

NON-MEMBERS OF JULIE KNOWN TO BE WITHIN THE LIMITS OF THE IMPROVEMENT ARE:

THE CONTRACTOR SHALL CONTACT JULIE AT LEAST 48 HOURS PRIOR TO EXCAVATION TO DETERMINE WHICH UTILITIES ARE IN THE AREA.



**LOCATION MAP**

STATE OF ILLINOIS  
DEPARTMENT OF TRANSPORTATION  
DISTRICT THREE

PREPARED BY: [Signature]  
DISTRICT STUDIES & PLANS ENGINEER

DATE: 2.3.09

EXAMINED BY: [Signature]  
DISTRICT CONSTRUCTION ENGINEER

Wayne Phillips  
DISTRICT MATERIALS ENGINEER

[Signature]  
DISTRICT OPERATIONS ENGINEER

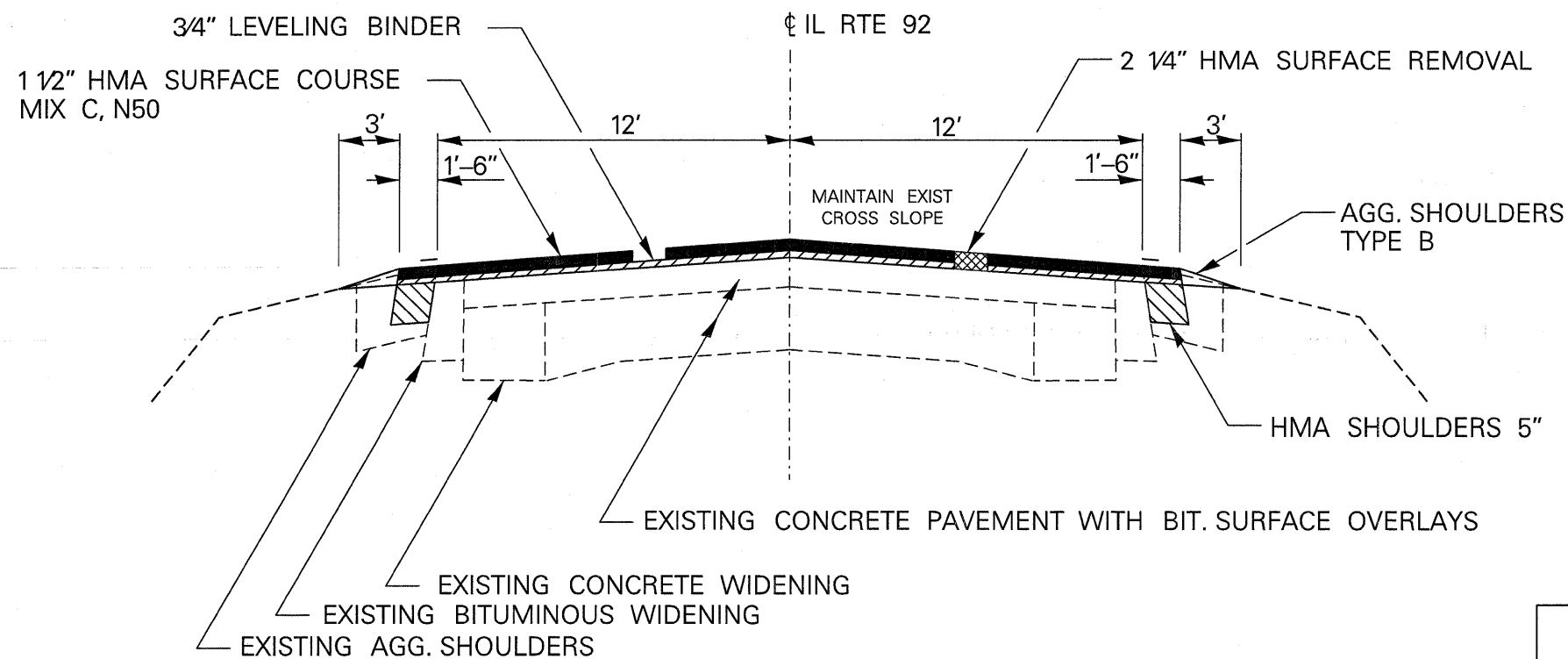
FILE NAME =	USER NAME = sellnr	DESIGNED -	REVISED -	<b>STATE OF ILLINOIS DEPARTMENT OF TRANSPORTATION</b>	<b>GENERAL NOTES</b>	F.A.P. RTE.	SECTION	COUNTY	TOTAL SHEETS	SHEET NO.
ca:\pwork\p\dot\sellnr\d0122909\d366918	---sht-cover.dgn	DRAWN -	REVISED -			587	(138 & 139)RS-4	BUREAU	10	2
	PLOT SCALE = 50,0001' / IN.	CHECKED -	REVISED -			CONTRACT NO. 66918				
	PLOT DATE = Feb 02, 2009 - 01:02:37 PM	DATE -	REVISED -			ILLINOIS FED. AID PROJECT				
				SCALE: SHEET NO. OF SHEETS STA. TO STA.						

SUMMARY OF QUANTITIES

ESP  
100% FED.  
CONSTRUCTION TYPE CODE  
ROADWAY  
1000

CODE NO.	ITEM	UNIT	TOTAL QUANTITY	CONSTRUCTION TYPE CODE
20200600	EXCAVATING AND GRADING EXISTING SHOULDER	UNIT	651	651
20400800	FURNISHED EXCAVATION	CU YD	212	212
40600100	BITUMINOUS MATERIALS (PRIME COAT)	GALLON	13988	13988
40600300	AGGREGATE (PRIME COAT)	TON	219	219
40600400	MIXTURE FOR CRACKS, JOINTS, AND FLANGEWAYS	TON	28	28
40600525	LEVELING BINDER (HAND METHOD), N50	TON	49	49
40600625	LEVELING BINDER (MACHINE METHOD), N50	TON	4543	4543
40600990	TEMPORARY RAMP	SQ YD	409	409
40603310	HOT-MIX ASPHALT SURFACE COURSE, MIX "C", N50	TON	9085	9085
40800050	INCIDENTAL HOT-MIX ASPHALT SURFACING	TON	548	548
44000158	HOT-MIX ASPHALT SURFACE REMOVAL, 2 1/4"	SQ YD	9102	9102
44000198	HOT-MIX ASPHALT SURFACE REMOVAL, VARIABLE DEPTH	SQ YD	4216	4216
48101200	AGGREGATE SHOULDERS, TYPE B	TON	1465	1465
48203017	HOT-MIX ASPHALT SHOULDERS, 5"	SQ YD	10838	10838
* 63100167	TRAFFIC BARRIER TERMINAL, TYPE 1 SPECIAL (TANGENT)	EACH	36	36
63200310	GUARDRAIL REMOVAL	FOOT	1400	1400
66700095	PERMANENT SURVEY MARKERS	EACH	2	2
67100100	MOBILIZATION	L SUM	1	1
70100460	TRAFFIC CONTROL AND PROTECTION, STANDARD 701306	L SUM	1	1
70100500	TRAFFIC CONTROL AND PROTECTION, STANDARD 701326	L SUM	1	1
70300100	SHORT-TERM PAVEMENT MARKING	FOOT	9891	9891
70300210	TEMPORARY PAVEMENT MARKING - LETTERS AND SYMBOLS	SQ FT	46.8	46.8
70300220	TEMPORARY PAVEMENT MARKING - LINE 4"	FOOT	93163	93163
70300240	TEMPORARY PAVEMENT MARKING - LINE 6"	FOOT	7090	7090
70300250	TEMPORARY PAVEMENT MARKING - LINE 8"	FOOT	663	663
70300260	TEMPORARY PAVEMENT MARKING - LINE 12"	FOOT	575	575
70300280	TEMPORARY PAVEMENT MARKING - LINE 24"	FOOT	81	81
70301000	WORK ZONE PAVEMENT MARKING REMOVAL	SQ FT	1098	1098
* 78000100	THERMOPLASTIC PAVEMENT MARKING - LETTERS AND SYMBOLS	SQ FT	46.8	46.8
* 78000200	THERMOPLASTIC PAVEMENT MARKING - LINE 4"	FOOT	7012	7012
* 78000400	THERMOPLASTIC PAVEMENT MARKING - LINE 6"	FOOT	170	170
* 78000500	THERMOPLASTIC PAVEMENT MARKING - LINE 8"	FOOT	663	663
* 78000600	THERMOPLASTIC PAVEMENT MARKING - LINE 12"	FOOT	575	575
* 78000650	THERMOPLASTIC PAVEMENT MARKING - LINE 24"	FOOT	81	81
* 78001110	PAINT PAVEMENT MARKING - LINE 4"	FOOT	86151	86151
* 78001130	PAINT PAVEMENT MARKING - LINE 6"	FOOT	6920	6920
* 78100100	RAISED REFLECTIVE PAVEMENT MARKER	EACH	436	436
* 78201000	TERMINAL MARKERS - DIRECT APPLIED	EACH	36	36

\* SPECIALTY ITEMS



**\*NOTE:**

1. MILL 2 1/4"
2. PLACE 5" HMA SHOULDERS
3. PAVE 3/4" LEVELING BINDER AND 1 1/2" HMA SURFACE OVER MILLED SURFACE AND HMA SHOULDERS

**TYPICAL SECTION**

	HMA SHOULDERS	HMA LEVEL BINDER	HMA SURFACE
PG GRADE	PG 58-22	PG 64-22	PG 64-22
MAX % RAP ALLOWABLE**	50%	25%	15%
DESIGN AIR VOIDS	2% @ N30	4% @ N50	4% @ N50
MIXTURE COMPOSITION	IL 19.0	IL 9.5	IL 12.5 OR IL 9.5
FRICTION AGGREGATE			MIXTURE C
DENSITY CONTROL LIMITS	CORES	SATISFACTION OF THE ENGINEER	CORRELATION

\*\* IF RAP OPTION IS SELECTED, THE ASPHALT CEMENT GRADE MAY NEED TO BE ADJUSTED. THIS WILL BE DETERMINED BY THE ENGINEER.

MAINLINE												
LOCATION	WIDTH	LENGTH	AREA	HMA SURF REM 2 1/4"	HMA LEVEL BIND (HM)	LEVEL BINDER (MM) N50	HMA SC MIX "C" N50	MIX CR JTS FLANGEWYS	BIT MATLS PR CT	AGG PR CT	TEMP RAMP	AGG SHLD TY B
STATION	FT	FT	SQ YD	SQ YD	TON	TON	TON	TON	GAL	TON	SQ YD	TON
31 +00 TO 41+41.05	VAR.	1041	4155.0	4155.0	2.1	174.5	349.0	1.2	540.2	8.3	12.0	79.0
STA. EQ. 41+41.05 = 47+89.8												
47+89.8 TO 68+60	+24	2070.0	5520.0	5520.0	2.8	270.5	541.0	1.7	837.2	12.9		157.2
68+60 TO 95+81	+24	2721.0	7256.0	7256.0	3.6	355.5	711.1	2.2	1100.5	16.9	12.0	206.6
BRIDGE OMISSION												
95+81 TO 97+20												
97+20 TO 120+80	+24	2360.0	6293.3	6293.3	3.1	308.4	616.7	1.9	954.5	14.7	12.0	179.2
120+80 TO 174+12	+24	5332.0	14218.7	14218.7	7.1	696.7	1393.4	4.3	2156.5	33.2		404.8
174+12 TO 226+18	+24	5206.0	13882.7	13882.7	6.9	680.3	1360.5	4.2	2105.5	32.4		395.3
226+18 TO 288+43	+24	6225.0	16600.0	16600.0	8.3	813.4	1626.8	5.0	2517.7	38.7		472.6
288+43 TO 341+50	+24	5307.0	14152.0	14152.0	7.1	693.4	1386.9	4.2	2146.4	33.0		402.9
341+50 TO 364+00	+24	2250.0	6000.0	6000.0	3.0	294.0	588.0	1.8	910.0	14.0		170.8
364+00 TO 369+00	VAR.	500.0	1850.0	1850.0	0.9	77.7	155.4	0.6	240.5	3.7	12.0	
IL 26 INTERSECTION*												
NORTH LEG	VAR.	100.0	542.0	542.0	0.3	22.8	45.5	0.2	70.5	1.1	12.0	
SOUTH LEG	VAR.	100.0	542.0	542.0	0.3	22.8	45.5	0.2	70.5	1.1	12.0	
TOTALS			91011.7	91011.7	45.5	4542.2	9084.5	27.3	13649.8	210.0	72.0	1464.8

\*NOTE : IL 92 STA. 367+95.6 = IL 26 STA. 1052+67.4 QUANTITY PROVIDED FOR 100' NORTH AND SOUTH OF THIS LOCATION

BITUMINOUS SHOULDER					
LOCATION	SIDE	LENGTH	AREA	HMA SHLDEX 5"	GRADING & EXIST SHLD
STATION		FT	SQ. YD.	SQ YD	UNIT
31+00 TO 41+41.05	LT & RT	1041	347	347	20.8
STA. EQ. 41+41.05 = 47+89.8					
47+89.8 TO 95+81	LT & RT	4791	1597	1597	95.8
BRIDGE OMISSION					
97+20 TO 364+00	LT & RT	26680	8893	8893	533.6
TOTALS				10837.3	650.2

SIDE ROAD & ENTRANCES								
LOCATION	STATION	RT/LT	INCIDENTAL HMA SURF	BIT MATLS PR CT	HMA SURF REM. VAR. DEPTH	TEMP. RAMP	FURN. EX*	AGG PR CT
			TON	GAL	SQ YD	SQ YD	CU YD	TON
RED OAK RD.	34+00	RT	168.0	106.7	1333.3	17.8	4.0	2.7
P.E./M.B.T	53+50	LT	24.0	15.2	190.1	8.9		0.4
P.E.	66+60	RT	3.4	2.1	26.7	10.7		0.1
1500 E	68+60	RT/LT	34.2	21.7	271.6	17.8	4.0	0.5
C.E.	80+80	RT	5.4	3.4	42.7	8.9		0.1
P.E./M.B.T	80+80	LT	6.4	4.0	50.6	4.0		0.1
C.E.	94+62	RT	7.2	4.6	57.4	4.4		0.1
P.E.	98+10	RT	6.6	4.2	52.4	10.7		0.1
PE./M.B.T.	108+50	LT	13.5	8.6	107.5	14.2		0.2
P.E.	110+00	LT	5.3	3.4	42.0	10.2		0.1
1600 E	120+80	RT/LT	35.2	22.4	279.7	19.1	4.0	0.6
P.E.	138+00	RT	4.1	2.6	32.2	7.1		0.1
P.E.	161+77	LT	4.9	3.1	38.9	9.8		0.1
1700 E	174+12	RT/LT	36.1	22.9	286.7	21.3	4.0	0.6
P.E. MBT	207+00	RT	6.3	4.0	50.0	13.3		0.1
1800 E	226+18	RT/LT	31.9	20.3	253.3	17.8	4.0	0.5
C.E.	266+50	LT	8.2	5.2	65.0	17.8		0.1
1900 E	288+43	RT/LT	32.6	20.7	258.4	18.7	4.0	0.5
P.E.	298+99	RT	4.2	2.7	33.3	9.8		0.1
1985 E	332+10	RT	17.6	11.2	140.0	9.8	2.0	0.3
2000E	341+50	LT	23.1	14.7	183.3	11.1	2.0	0.4
P.E.	354+74	RT	3.2	2.0	25.6	6.2		0.1
P.E.	356+38	RT	2.9	1.8	22.8	6.7		0.0
P.E.	358+06	RT	5.6	3.6	44.4	11.1		0.1
P.E.	358+10	LT	3.6	2.3	28.9	8.9		0.1
P.E.	358+70	LT	3.5	2.2	27.8	8.9		0.1
P.E.	360+44	LT	6.2	3.9	48.9	11.6		0.1
P.E.	362+72	RT	8.4	5.3	66.7	13.3		0.1
S. GROVE ST.	364+26	LT	19.6	12.5	155.8	10.7	4.0	0.3
TOTALS			547.2	337.3	4216.0	336.4	32.0	8.7

\*PLACE FURNISHED EX AROUND SIDERAOD RADII. THIS AREA TO BE SEEDED, FERTILIZED AND MULCHED- NOT PAID FOR SEPERATELY BUT INCLUDED IN THE COST OF FURNISHED EXCAVATION

GUARDRAIL					
STRUCTURE LOCATION	SIDE	TBT TY 1 SPL (TANGENT)	GUARDRAIL REMOVAL	TERMINAL MARKER - DA	FURNISHED EXCAVATION
		EA	FOOT	EA	CU YD
96+50	LT	2	75	2	10
96+50*	RT	6	275	6	30
186+35	LT	2	75	2	10
186+35	RT	2	75	2	10
256+50	LT	2	75	2	10
256+50	RT	2	75	2	10
276+75	LT	2	75	2	10
276+75	RT	2	75	2	10
299+80	LT	2	75	2	10
299+80	RT	2	75	2	10
332+70	LT	2	75	2	10
332+70	RT	2	75	2	10
358+93	LT	2	75	2	10
358+93	RT	2	75	2	10
363+15	LT	2	75	2	10
363+15	RT	2	75	2	10
TOTAL		36	1400	36	180

\* 50' OF GUARDRAIL REMOVAL REQUIRED EACH SIDE OF EXISTING ENTRANCES TO FIT TBT TY 1 SPL (TAN)

\*\* FURNISHED EX. TO BE PLACED AT END SECTIONS ACCORDING TO STD. 630301

PAVEMENT MARKING SCHEDULE												
STA. TO STA.	PAINT PAVEMENT MARKING			THERMOPLASTIC PAVEMENT MARKING								RAISED REFL
	4" WHT	4" YELL	6" YELL	4" WHT	4" YELL	6" YELL	8" WHT	12" WHT	12" YELL	24"WHT	LTRS & SYM	PAVT MARK
	FT	FT	FT	FT	FT	FT	FT	FT	FT	FT	SQ FT	EA
31+00 TO 41+41.05				1823	4129		663	160	415	33	46.8	30
STA. EO.												
47+89.8 TO 68+60	4142	1015	500									26
68+60 TO 95+81	5442	2722	680									35
95+81 TO 97+20	BRIDGE OMISSION											
97+20 TO 120+80	4720	2955	330									30
120+80 TO 174+12	10664	2700	1330									67
174+12 TO 226+18	10412	2572	1300									66
226+18 TO 288+43	12450	5528	1160									78
288+43 TO 341+50	10614	3055	1270									67
341+50 TO 364+00	4500	2660	350									29
364+00 TO 369+00				640		130				24		4
IL 26												
NORTH LEG				210		20				12		2
SOUTH LEG				210		20				12		2
SUBTOTALS	62944	23207	6920	2883	4129	170	663	160	415	81	46.8	436
TOTALS	86151		6920	7012		170	663	575		81	46.8	436

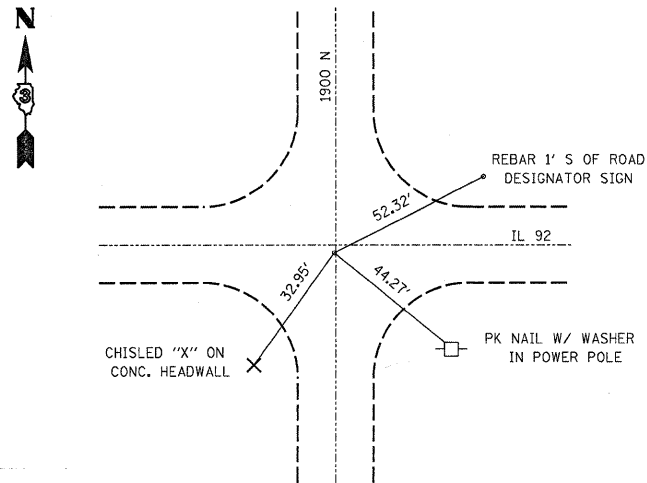
NOTE: THE FOLLOWING NO PASSING ZONES SHOULD BE FIELD VERIFIED BY THE ENGINEER PRIOR TO RESURFACING

EB: STA. 63+90 TO 79+75	WB STA. 47+90 TO 53+35
EB STA. 100+85 TO 116+70	WB STA. 79+75 TO 95+60
EB STA. 127+25 TO 132+55	WB STA. 106+10 TO 122+00
EB STA. 169+50 TO 180+00	WB STA. 132+50 TO 148+40
EB STA. 201+15 TO 209+10	WB STA. 180+00 TO 185+35
EB STA. 222+30 TO 254+00	WB STA. 209+10 TO 211+75
EB STA. 301+50 TO 312+00	WB STA. 238+10 TO 264+55
EB STA. 327+90 TO 349+00	WB STA. 312+00 TO 317+35
	WB STA. 338+40 TO 359+60

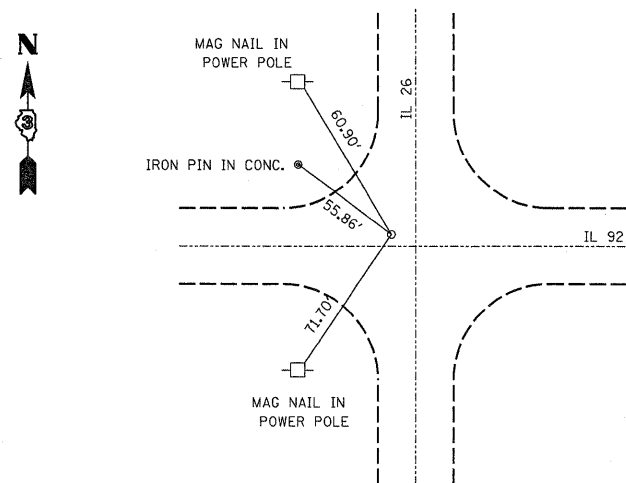
TEMPORARY PAVEMENT MARKING SCHEDULE										
STA. TO STA.	TEMPORARY PAVEMENT MARKING								SHORT TERM	WORK ZONE PAV'T
	4" WHT	4" YELL	6" YELL	8" WHT	12" WHT	12" YELL	24"WHT	LTRS & SYM	PAVT MARK	MARK REM.
	FT	FT	FT	FT	FT	FT	FT	SQ FT	FT	SQ FT
31+00 TO 41+41.05	1823	4129		663	160	415	33	46.8	276	31
STA. EO.										
47+89.8 TO 68+60	4142	1015	500						624	69
68+60 TO 95+81	5442	2722	680						819	91
95+81 TO 97+20	BRIDGE OMISSION									
97+20 TO 120+80	4720	2955	330						708	79
120+80 TO 174+12	10664	2700	1330						1602	178
174+12 TO 226+18	10412	2572	1300						1563	173
226+18 TO 288+43	12450	5528	1160						1869	207
288+43 TO 341+50	10614	3055	1270						1593	177
341+50 TO 364+00	4500	2660	350						675	75
364+00 TO 369+00	640		130				24		96	11
IL 26										
NORTH LEG	210		20				12		33	4
SOUTH LEG	210		20				12		33	4
SUBTOTALS	65827	27336	7090	663	160	415	81	46.8	9891	1098
TOTALS	93163		7090	663	575		81	46.8	9891	1098

NOTE: THE FOLLOWING NO PASSING ZONES SHOULD BE FIELD VERIFIED BY THE ENGINEER PRIOR TO RESURFACING

EB: STA. 63+90 TO 79+75	WB STA. 47+90 TO 53+35
EB STA. 100+85 TO 116+70	WB STA. 79+75 TO 95+60
EB STA. 127+25 TO 132+55	WB STA. 106+10 TO 122+00
EB STA. 169+50 TO 180+00	WB STA. 132+50 TO 148+40
EB STA. 201+15 TO 209+10	WB STA. 180+00 TO 185+35
EB STA. 222+30 TO 254+00	WB STA. 209+10 TO 211+75
EB STA. 301+50 TO 312+00	WB STA. 238+10 TO 264+55
EB STA. 327+90 TO 349+00	WB STA. 312+00 TO 317+35
	WB STA. 338+40 TO 359+60



SOUTHEAST CORNER  
 SEC. 7 T18N R9E, FOURTH PM BUREAU CO  
 SURVEYOR'S NAIL



SOUTH QUARTER CORNER  
 SEC. 9 T18N R9E, FOURTH PM BUREAU CO  
 MAG NAIL

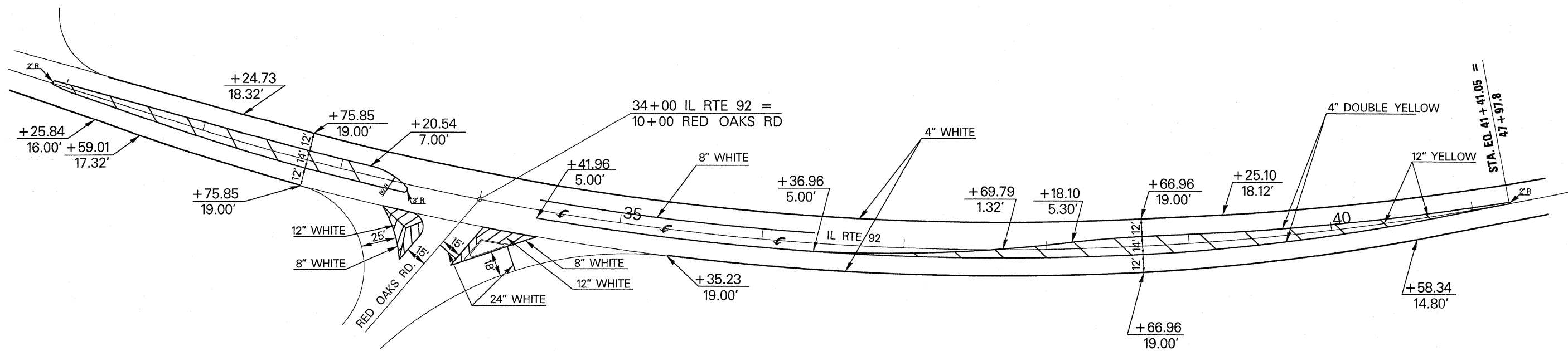
FILE NAME =	USER NAME = sellnr	DESIGNED -	REVISED -
c:\pwork\pwork\sellnr\d0122909\d366918	sh-t-details.DGN	DRAWN -	REVISED -
	PLOT SCALE = 49.9883' / IN.	CHECKED -	REVISED -
	PLOT DATE = Feb 02, 2009 - 01:06:51 PM	DATE -	REVISED -

STATE OF ILLINOIS  
 DEPARTMENT OF TRANSPORTATION

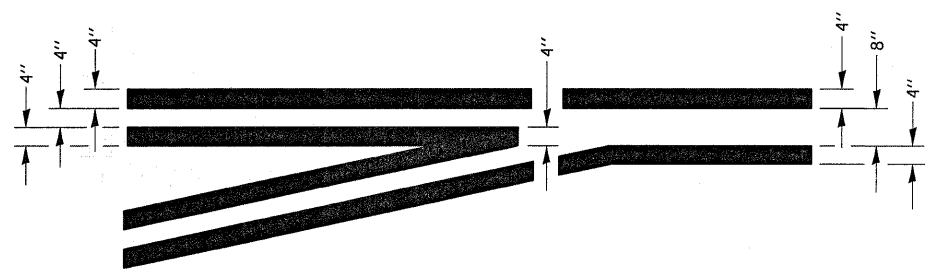
TIE POINTS

SCALE: SHEET NO. OF SHEETS STA. TO STA.

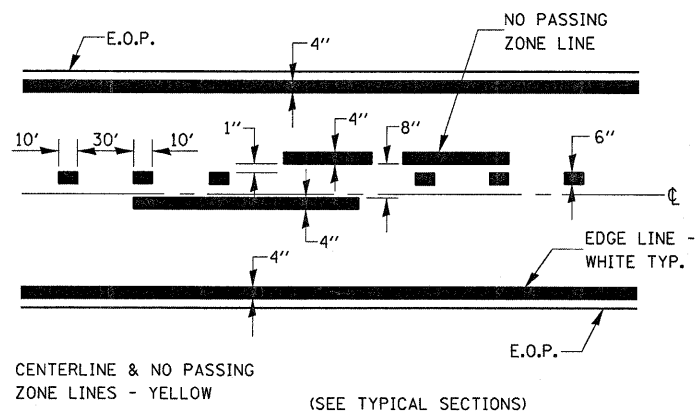
F.A.P. RTE.	SECTION	COUNTY	TOTAL SHEETS	SHEET NO.
587	(138 & 139)RS-4	BUREAU	10	7
CONTRACT NO. 66918				
ILLINOIS FED. AID PROJECT				



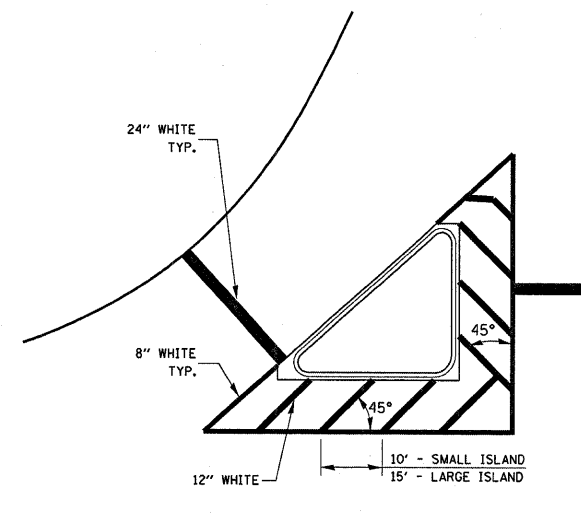
**PAVEMENT MARKING AT THE INTERSECTION OF IL 92 AND RED OAKS RD.**



**TYPICAL APPLICATION  
@ LEFT TURN LANES 780-1**



**PAVEMENT MARKING**

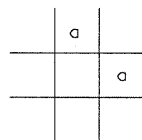
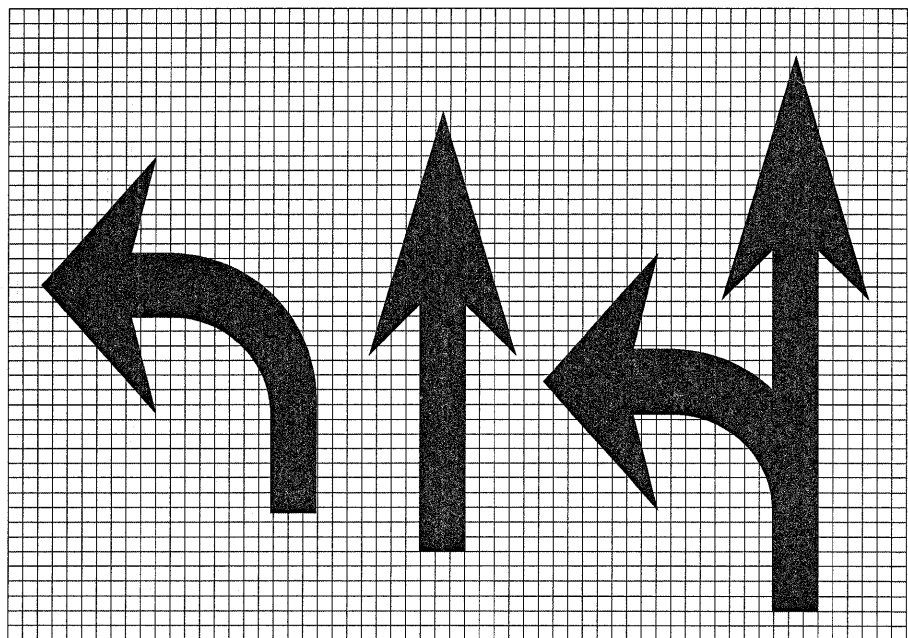
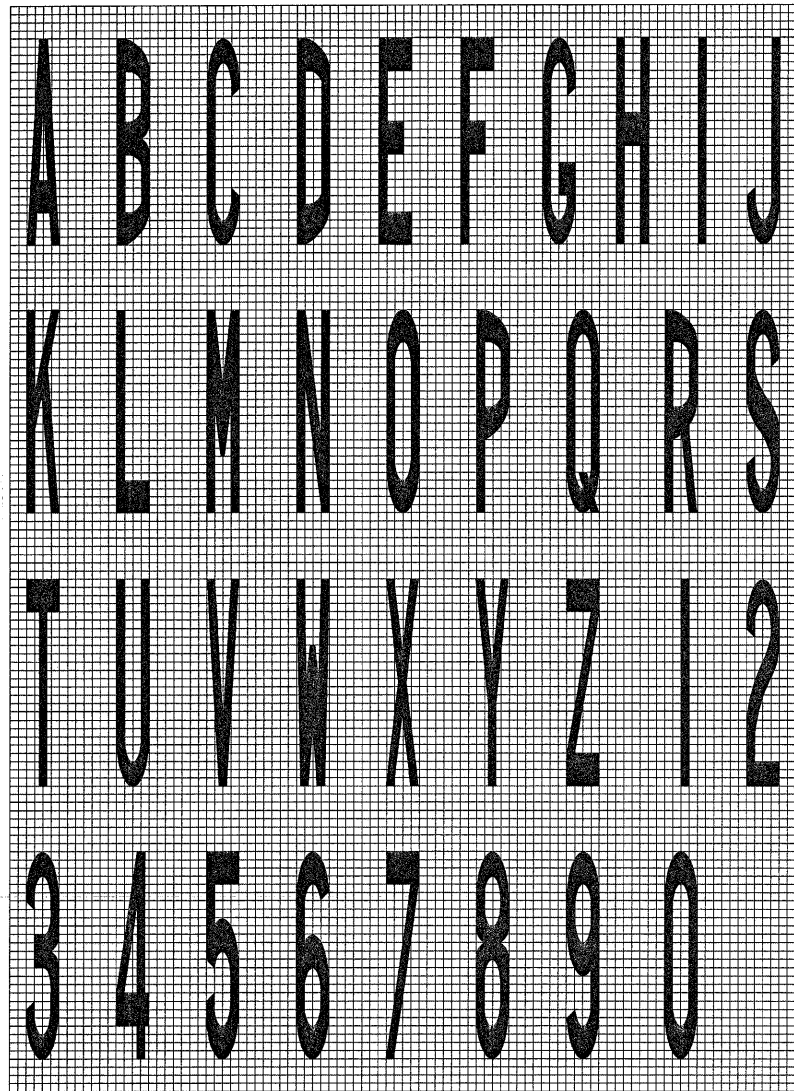


**TYPICAL ISLAND  
780-21**

780-8

FILE NAME =	USER NAME = sellnr	DESIGNED -	REVISED -	<b>STATE OF ILLINOIS DEPARTMENT OF TRANSPORTATION</b>	<b>DETAILS</b>				F.A.P. RTE.	SECTION	COUNTY	TOTAL SHEETS	SHEET NO.		
c:\pw_work\pwsdot\sellnr\d0122909\d36691	sh-t-details.DGN	DRAWN -	REVISED -		SCALE:	SHEET NO.	OF	SHEETS	STA.	TO STA.	587	(138 & 139)RS-4	BUREAU	10	8
	PLOT SCALE = 50.0570' / IN.	CHECKED -	REVISED -												
	PLOT DATE = Feb 02, 2009 - 01:07:05 PM	DATE -	REVISED -												
											CONTRACT NO. 66918				
											ILLINOIS FED. AID PROJECT				



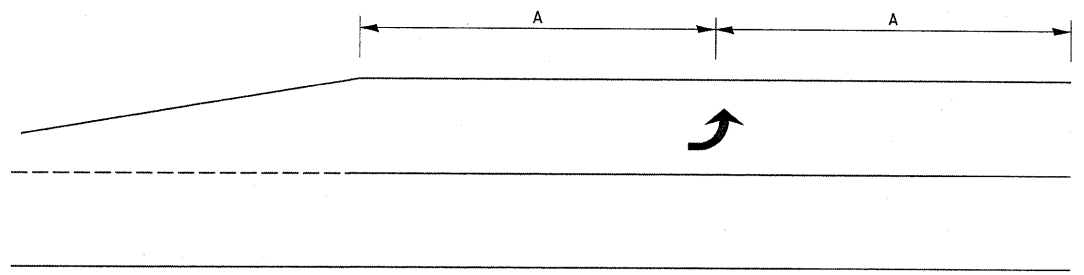


LEGEND HEIGHT	ARROW SIZE	ø
6'	SMALL	2.9
8'	LARGE	3.8

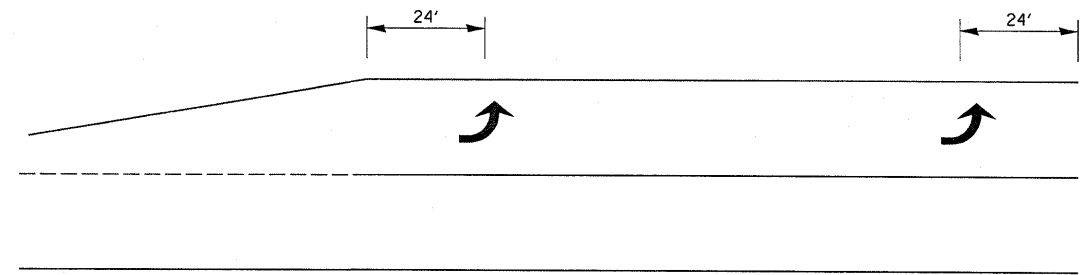
THE SPACE BETWEEN ADJACENT LETTERS OR NUMERALS SHOULD BE APPROXIMATELY 3' FOR 6' LEGEND AND 4' FOR 8' LEGEND.

**LETTER AND ARROW GRID SCALE**

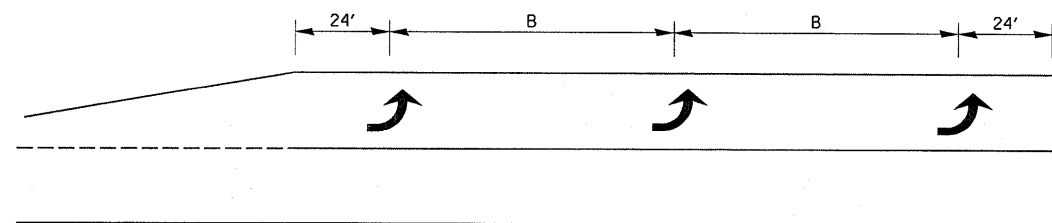
**780-20**



**99' AND UNDER**



**100' TO 149'**



**150' AND LONGER**

**TYPICAL PLACEMENT OF ARROWS IN TURN LANES**

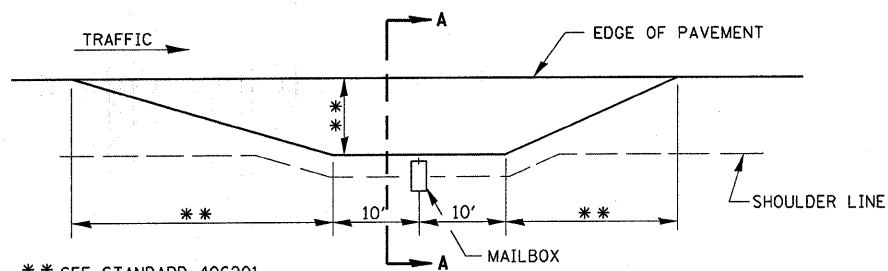
**780-10**

FILE NAME =	USER NAME = se1nr	DESIGNED -	REVISED -
ca\pwork\pwork\se1nr\d0122989\d366915	shd-deta1s.DGN	DRAWN -	REVISED -
	PLOT SCALE = 50.0570' / IN.	CHECKED -	REVISED -
	PLOT DATE = Feb 02, 2009 - 01:07:22 PM	DATE -	REVISED -

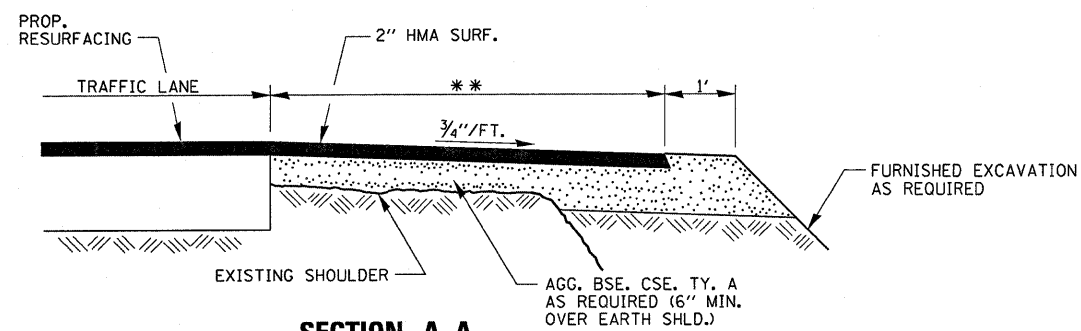
**STATE OF ILLINOIS  
DEPARTMENT OF TRANSPORTATION**

DETAILS			
SCALE:	SHEET NO.	OF SHEETS	STA. TO STA.

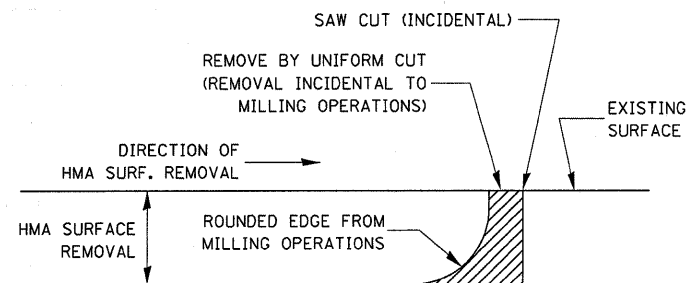
F.A.P. RTE.	SECTION	COUNTY	TOTAL SHEETS	SHEET NO.
587	(138 & 139)RS-4	BUREAU	10	9
CONTRACT NO. 66918				
ILLINOIS FED. AID PROJECT				



\*\* SEE STANDARD 406201

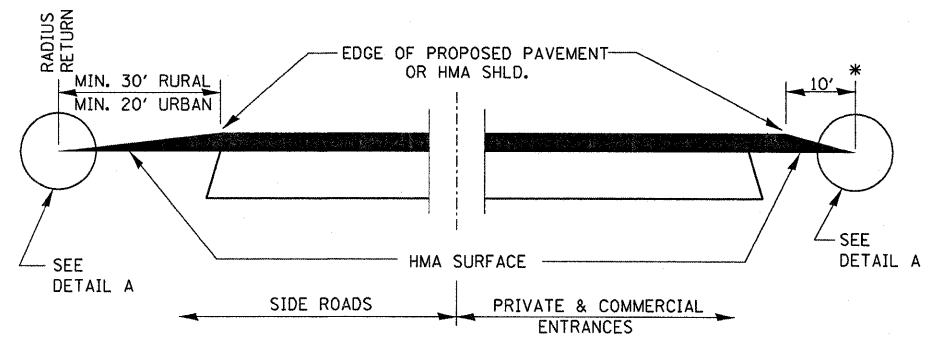


**SECTION A-A**  
**RURAL MAILBOX TURNOUT DETAILS**

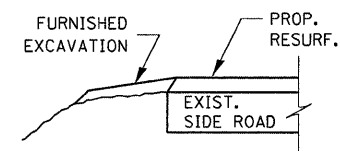


**NOTE:**  
WHEN MILLING OPERATIONS PRODUCE A ROUNDED EDGE, THEN A SAW CUT SHALL BE USED TO MANUFACTURE A PERPENDICULAR EDGE AS SHOWN IN THE DETAIL. THE ENGINEER SHALL BE THE SOLE JUDGE CONCERNING THE USE OF THIS DETAIL.

**HMA DETAIL AT BUTT JOINTS**

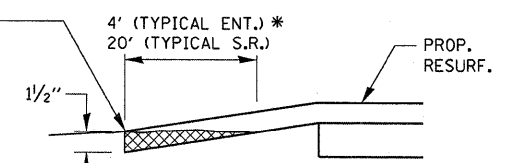


**SECTION A-A**  
**DETAILS AT ENTRANCES & SIDE ROADS**

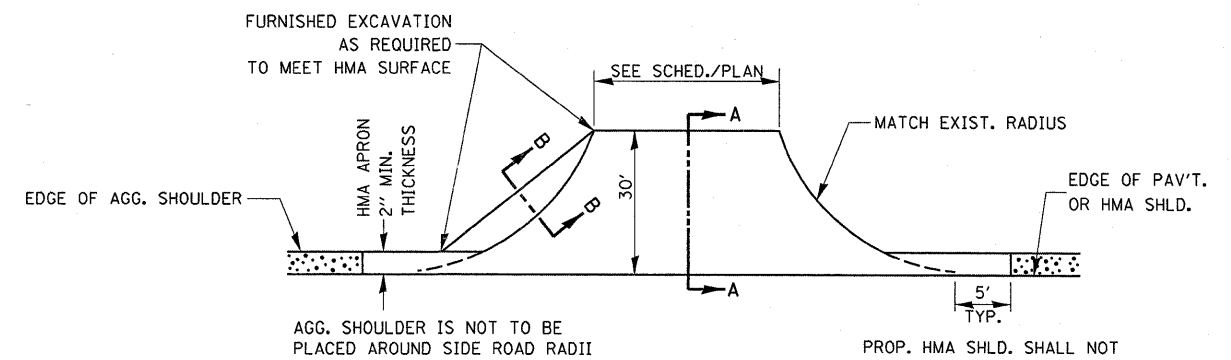


**SECTION B-B**

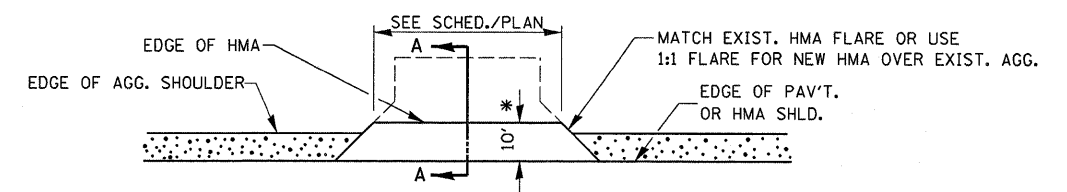
THE COST OF REMOVAL AT EXISTING HMA OR P.C.C. LOCATIONS SHALL BE PAID FOR PER SQ. YD. BY THE APPROPRIATE PAY ITEM. REMOVAL AT THE EXISTING AGG. LOCATIONS SHALL BE INCIDENTAL TO THE HMA. A-3 LOCATIONS SHALL BE FEATHER TAPERED.



**DETAIL A**



**PLAN AT SIDE ROADS**



**PLAN AT PRIVATE & COMMERCIAL ENTRANCES**

(DO NOT RESURFACE FIELD ENTRANCES)

\* PROPOSED HMA RESURFACING AT PUBLIC EDUCATIONAL FACILITY ENTRANCES SHALL BE EXTENDED TO THE RIGHT-OF-WAY LIMITS.

FILE NAME =	USER NAME = se1nr	DESIGNED -	REVISED -
c:\pwork\pwork\se1nr\d0122909\d366918	sh-t-details.DGN	DRAWN -	REVISED -
	PLOT SCALE = 50.0002' / IN.	CHECKED -	REVISED -
	PLOT DATE = Feb 02, 2009 - 01:07:47 PM	DATE -	REVISED -

**STATE OF ILLINOIS**  
**DEPARTMENT OF TRANSPORTATION**

**DETAILS**

SCALE: SHEET NO. OF SHEETS STA. TO STA.

F.A.P. RTE.	SECTION	COUNTY	TOTAL SHEETS	SHEET NO.
587	(138 & 139)RS-4	BUREAU	10	10
CONTRACT NO. 66918				
ILLINOIS FED. AID PROJECT				