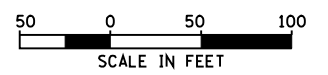
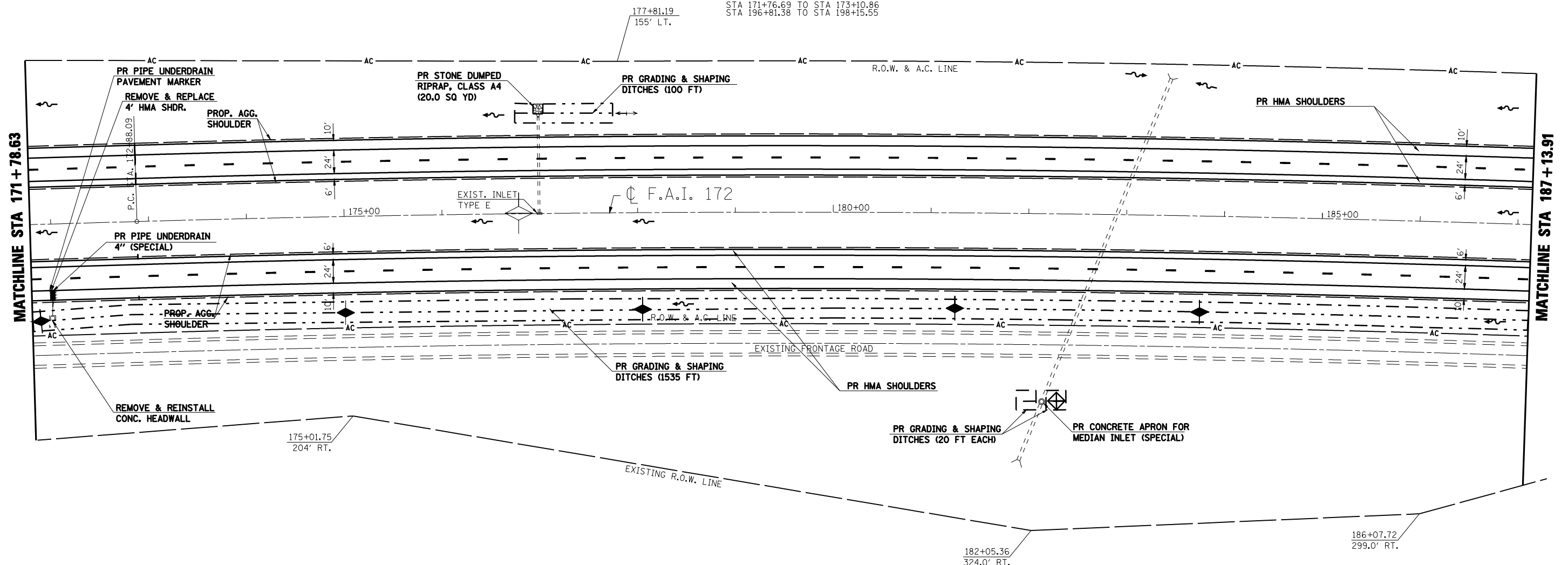


F.A.I. RTE.	SECTION	COUNTY	TOTAL SHEETS	SHEET NO.
172	*	ADAMS	108	47
STA. 171+78.63		TO STA. 187+13.91		
FED. ROAD DIST. NO. 6 ILLINOIS FED. AID PROJECT				

* (1-5)RS-1; (1-6)RS
 CONTRACT NO. 72694



CURVE
 P.I. STA= 184+97.19
 $\Delta = 6^{\circ}02'20.57''$ (RT)
 $D = 0^{\circ}15'00''$
 $R = 22,918.31'$
 $T = 1208.93'$
 $L = 2,415.62'$
 $E = 31.86'$
 $EX \ \& \ PR \ SE = 1.5\%/R.C. (+70 \text{ MPH DESIGN})$
 $T.R. = 66.67'$
 $S.E. \text{ RUN} = 67.50'$
 $P.C. \text{ STA} = 172+88.09$
 $P.T. \text{ STA} = 197+03.71$
 $SE \ \text{TRANS.}$
 $STA \ 171+76.69 \ \text{TO} \ STA \ 173+10.86$
 $STA \ 196+81.38 \ \text{TO} \ STA \ 198+15.55$



- INLET & PIPE PROTECTION
- HMA SURFACE REMOVAL - BUTT JOINT
- PCC SURFACE REMOVAL - BUTT JOINT
- HEAVY DUTY EXCELSIOR BLANKET
- TEMPORARY DITCH CHECK (AGG. EROS. CONTROL)
- DITCH FLOW LINE

REVISIONS	
NAME	DATE

ILLINOIS DEPARTMENT OF TRANSPORTATION
PLAN SHEET
STA. 171+78.63 TO STA. 187+13.91
 F.A.I. 172
 ADAMS COUNTY

SCALE: VERT. _____
 HORIZ. _____
 DATE: 08/09/04

DRAWN BY: JJS
 CHECKED BY: LLQ