

F.A.I. RTE.	SECTION	COUNTY	TOTAL SHEETS	SHEET NO.
172	*	ADAMS	108	58
STA. 51+97.41		TO STA. 67+32.41		
FED. ROAD DIST. NO. 6 ILLINOIS FED. AID PROJECT				

* (1-5)RS-1; (1-6)RS
 CONTRACT NO. 72694

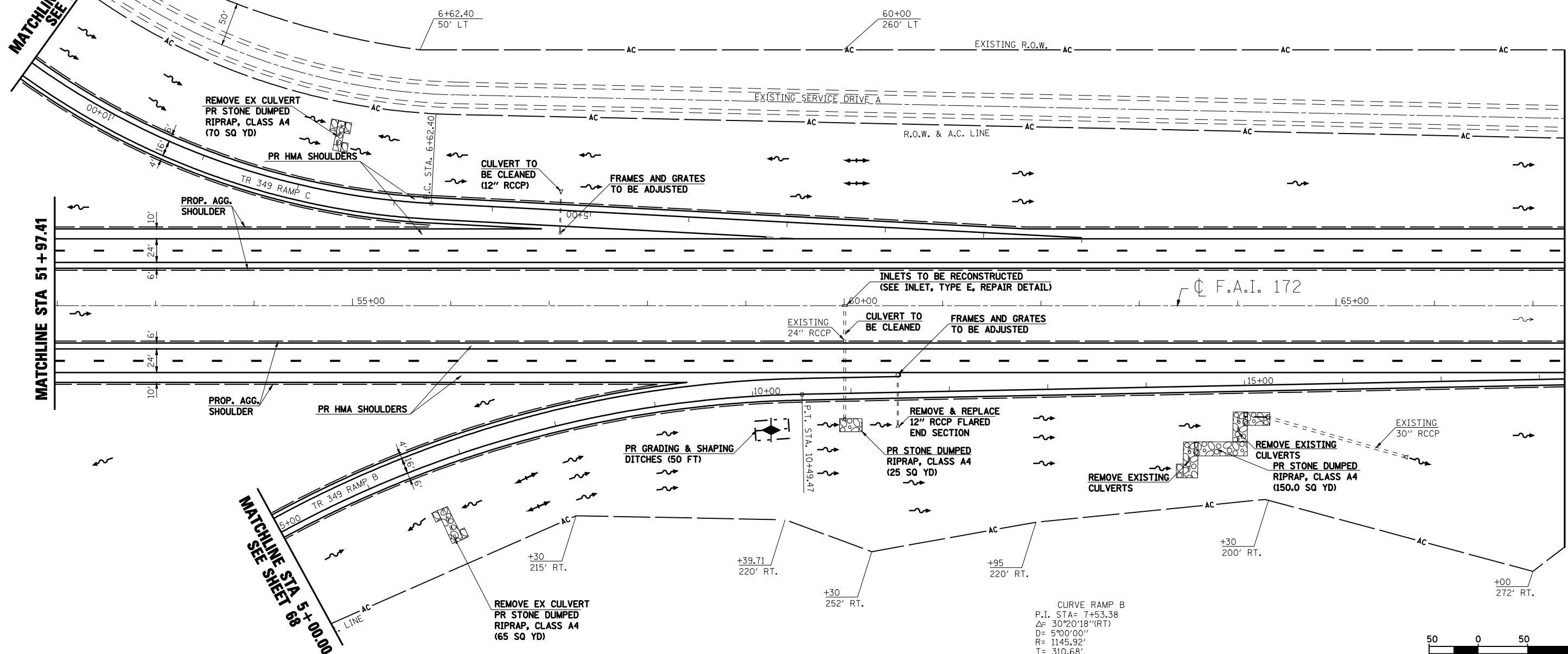


CURVE RAMP C
 P.I. STA= 9+74.65
 $\Delta= 44^{\circ}27'46''$ (RT)
 $D= 7^{\circ}30'00''$
 $R= 763.94'$
 $T= 312.25'$
 $L= 592.84'$
 $E= 61.35'$
 EX & PR SE= 8.00%
 $T.R.= 44.4'$
 $S.E. RUN= 236.80'$
 P.C. STA= 6+62.40
 P.T. STA= 12+55.24
 SE TRANS.:
 STA 5+29.02 TO STA 7+41.33
 STA 11+38.44 TO STA 13+75.24

MATCHLINE STA 11+00.00
 SEE SHEET 69

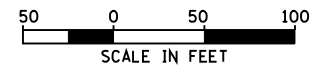
MATCHLINE STA 51+97.41

MATCHLINE STA 67+32.41



- INLET & PIPE PROTECTION
- HMA SURFACE REMOVAL - BUTT JOINT
- PCC SURFACE REMOVAL - BUTT JOINT
- HEAVY DUTY EXCELSIOR BLANKET
- TEMPORARY DITCH CHECK (AGG. EROS. CONTROL)
- DITCH FLOW LINE

CURVE RAMP B
 P.I. STA= 7+53.38
 $\Delta= 30^{\circ}20'18''$ (RT)
 $D= 5^{\circ}00'00''$
 $R= 1145.92'$
 $T= 310.68'$
 $L= 606.77'$
 $E= 41.37'$
 EX & PR SE= 8.00%
 $T.R.= 48.0'$
 $S.E. RUN= 256.00'$
 P.C. STA= 4+42.70
 P.T. STA= 10+49.47
 SE TRANS.:
 STA 2+98.40 TO STA 5+28.03
 STA 9+64.14 TO STA 11+93.77



REVISIONS	
NAME	DATE

ILLINOIS DEPARTMENT OF TRANSPORTATION
PLAN SHEET
 STA. 51+97.41 TO STA. 67+32.41
 F.A.I. 172
 ADAMS COUNTY

SCALE: VERT. DRAWN BY JJS
 HORIZ. CHECKED BY LLQ
 DATE 08/09/04