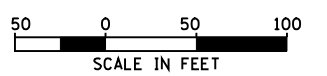
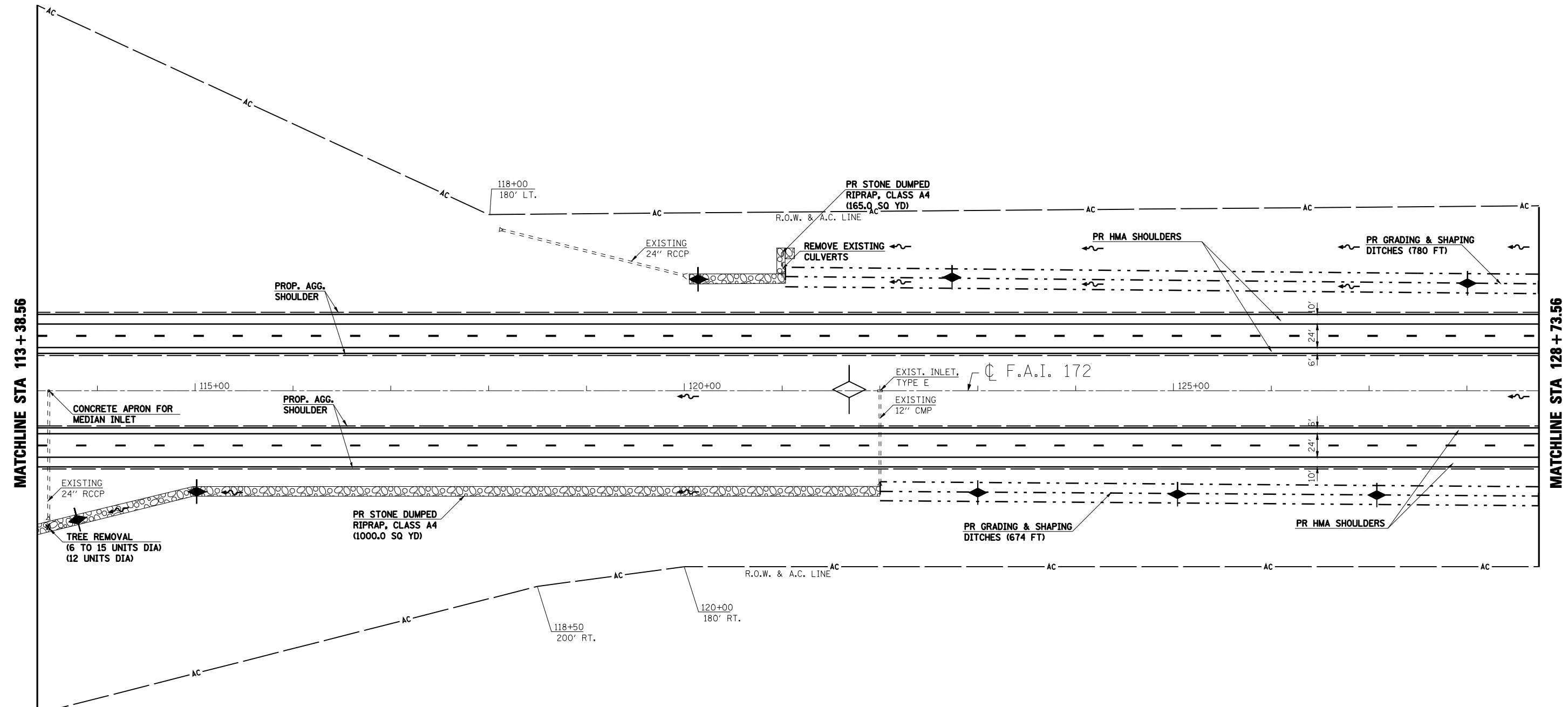


F.A.I. RTE.	SECTION	COUNTY	TOTAL SHEETS	SHEET NO.
172	*	ADAMS	108	62

STA. 113+38.56 TO STA. 128+73.56  
 FED. ROAD DIST. NO. 6 ILLINOIS FED. AID PROJECT

\* (1-5)RS-1; (1-6)RS  
 CONTRACT NO. 72694



- ◆ INLET & PIPE PROTECTION
- ▨ HMA SURFACE REMOVAL - BUTT JOINT
- ▩ PCC SURFACE REMOVAL - BUTT JOINT
- ▧ HEAVY DUTY EXCELISIOR BLANKET
- ◆ TEMPORARY DITCH CHECK (AGG. EROS. CONTROL)
- ~ DITCH FLOW LINE

REVISIONS	
NAME	DATE

ILLINOIS DEPARTMENT OF TRANSPORTATION  
**PLAN SHEET**  
**STA. 113+38.56 TO STA. 128+73.56**  
 F.A.I. 172  
 ADAMS COUNTY

SCALE: VERT. \_\_\_\_\_  
 HORIZ. \_\_\_\_\_  
 DATE 08/09/04

DRAWN BY JJS  
 CHECKED BY LLQ